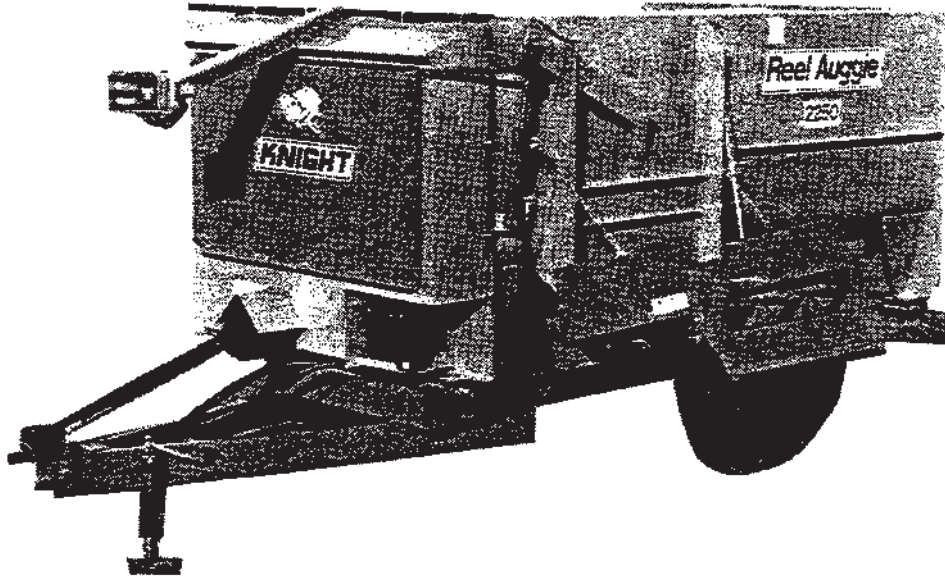


# Reel Auggie 2250/2300 Tow Type

## DEALER SERVICE PARTS LISTING



### TABLE OF CONTENTS

Using This Listing.....	1
Front End Parts.....	2-5
Reel & Auger Parts - 2250.....	6-7
Reel & Auger Parts - 2300.....	8-9
Door Parts.....	10
Slide Tray.....	11
Power Chute.....	12-13
Selector Valve - Slide Tray.....	14
Diverter Valve - Power Chute.....	15
Eaton Scale Parts.....	16-17
J-Star Scale Parts.....	18
Weigh-Tronix Scale Parts.....	19
Undercarriage.....	20-21
PTO Driveline & Friction Clutch.....	22
Jackstand.....	23
Hay-Max Kit Parts.....	24-25
Repair Liner Parts.....	26
Decal & Paint List.....	27
Optional Kits.....	28
Flighting Terms & Dimensions.....	29
Universal Joint Repair.....	30
Hardware Listing.....	31-32

Catalog P/N 005254  
DR122992

**ABBREVIATIONS**

RA2250/2300-TOW R081790

Assy	Assembly
A/R	As Required
B	Bolt
Brg	Bearing
BSN	Before Serial Number
BTM	Bottom
C Bolt	Carriage Bolt
Cttr	Cotter
CV	Constant Velocity (Joint)
Dia	Diameter
ea	Each
Eq or Equiv	Equivalent
FLN	Flanged Lock Nut
FW	Flat Washer
Ga	Gauge
Gr or Grd	Grade
Hd	Head
Hyd	Hydraulic
ID	Inside Diameter
Ill or Illus	Illustration
Ind	Indicator
KW	Keyway
LH	Left Hand
LW	Lock Washer
Mtg Hrd	Mounting Hardware
NC	National Coarse
NF	National Fine
OD	Outside Diameter
Pc(s)	Piece(s)
PD	Pitch Diameter
PTO	Power Takeoff (Shaft)
Q or Qty	Quantity
Reg Mach	Regular Machine
RH	Right hand
SN	Serial Number
Sprkt	Sprocket
Sq	Square
Std	Standard
UASN	Used After Serial Number
UBSN	Used Before Serial Number

**USING THIS SERVICE PARTS LISTING**

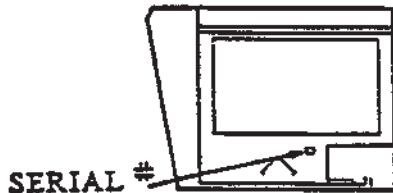
RA2250/2300-TOW R081790

This listing uses a number indentation system to specify the parts of an assembly. Any number which is indented to the right, indicates that it is a component of the item to the upper left. Example:

<u>Part no</u>	<u>Description</u>	<u>Qty</u>
uuu-uuu	Assembly A	2
vvv-vvv	Sub-Assembly B (Component of A)	3
www-www	Component of B	5
xxx-xxx	Another Component of B	1
yyy-yyy	Sub-Assembly C (Component of A)	1
etc.		

Using this system, the sub-assemblies and their components are included if an Assembly is ordered. Similarly, the components of a sub-assembly are included if a sub-assembly is ordered.

The quantity (qty) associated with an assembly, represents the number of times an assembly could be shown in the drawing. The sub-assembly quantity however, is the number of times a sub-assembly is used to build one assembly. Similarly, the component quantity refers to the number of times a given component is found in one sub-assembly.



Serial Number Location  
Front View  
Figure A

MODEL AND SERIAL NUMBER INFORMATION is located below the drive shielding (Fig. A). The model number, serial number and part number should be known when asking service personnel for parts.

If you cannot find the part you need, be as descriptive as possible when placing an order:

Sprockets: give the bore size, number of teeth, and number and size of keyways.

Roller chain: give the size of chain (stamped on the side of each link) and number of links.

Shafting: give the diameter, length, and number and size of keyways.

Hardware is generally not included with parts. If you need any hardware, check the size, the length, and the grade (Fig. B), then check the hardware list in this manual for the part numbers. All hex head bolts up to and including 7/16" diameter are grade 5, and nuts are grade B unless otherwise stated.

The hardware listing also includes listings for zerks, cotter pins, set screws, and roller chain links.

The illustrations in this manual are meant to be used only as a guide for identifying parts and locating their relative positions.

**Bolt Grades**

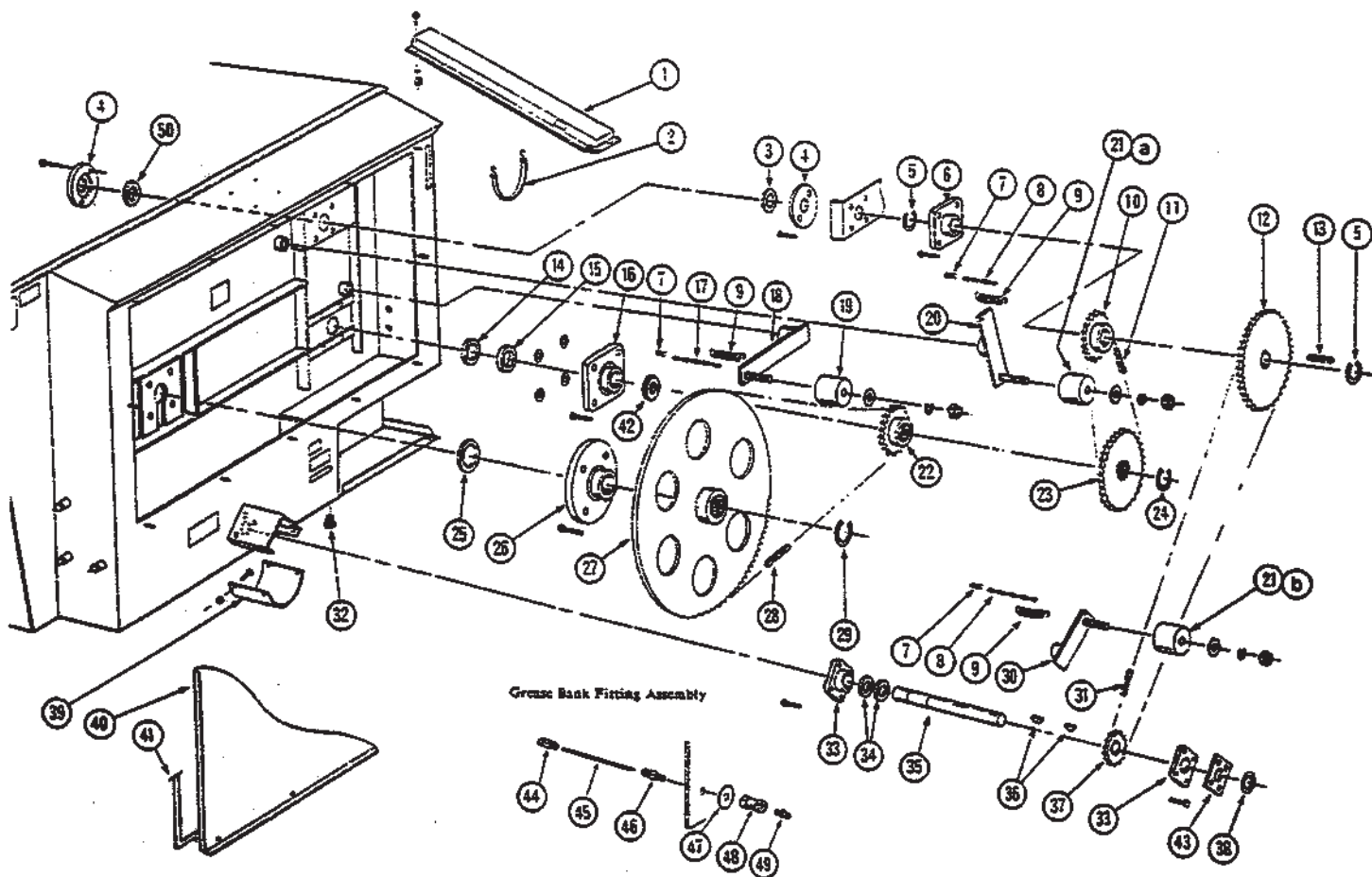


Bolt Head Grade Markings  
Figure B

A \* following a part number (XXX-XXX\*) indicates that the part is no longer used in production for this application. Superscript letters (XXX-XXX<sup>A</sup>) refer to footnotes and/or illustration boxes.

**FRONT END PARTS**

RA2250/2300-TOW DR121092



KNIGHT MANUFACTURING CORP. PO BOX 167 BRODHEAD, WI 53520  
OFFICE: (608) 897-2131 PARTS/SERVICE: (608) 897-2125 FAX: (608) 897-2561

FRONT END PARTS

RA2250/2300-TOW DR120192

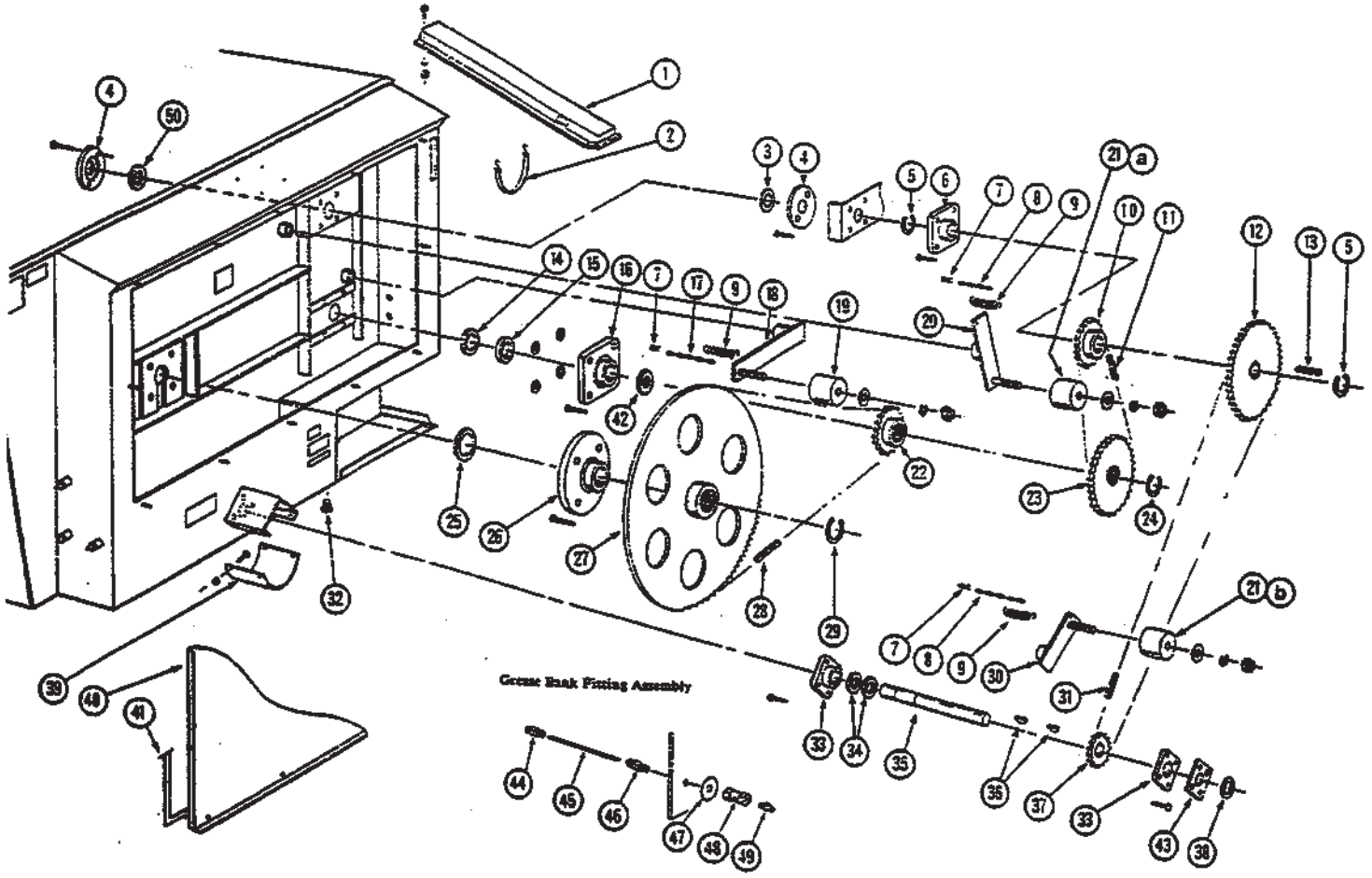
REF	PART NO	QTY	DESCRIPTION
1	101-733	1	Indicator Mount Assembly Mtg Hrd: 3/8" x 1" Bolt, LW & Nut (4 ea)
2	171-936	1	Hydraulic Hose Retaining Strap
3	133-376	1	Seal; 2" ID x 3-1/2" OD
4	133-852	2	Seal Retaining Plate; 1/4" x 4-5/8" Dia Mtg Hrd: 5/16" x 1-1/4" Bolt, FLN & FW (2 ea)
5	170-142	2	Snap Ring; 2", Truarc 5100-200 Or Equiv
6	170-008	1	Bearing; 2", FYH UCF X10-32E L-III Or Equiv Mtg Hrd: 5/8" x 1-3/4" Bolt, LW & Nut (4 ea)
7	170-800	3	Clinch Pin
8	170-478	2	Machine Chain; #4 x 12 Link (7")
9	172-006	3	Spring
10	133-916	1	Sprocket; 80-B-18, 2" Bore, 1/2" Keyway
11	170-108	1	Roller Chain; 80-1-70 Pitch, W/Connector Link
12	133-917	1	Sprocket; 60-B-72, 2" Bore, 1/2" Keyway
13	170-898	1	Key; 1/2" x 2-1/2" Square
14	133-277	1	Seal; 2-1/2" ID x 3-1/2" OD
15	133-903	1	Seal Spacer Pipe; 2-1/2" ID x 1" Long
16	170-053	1	Bearing; 2-1/2", FYH UCF X13-40E L-III Mtg Hrd: 5/8" x 3" Bolt, LW, FW & Nut (4 ea)
17	171-032	1	Machine Chain; #4 x 10 Links
18	101-761	1	Chain Tightener Arm (#100)
	101-579* <sup>A</sup>	1	Tightener Arm; Sprocket Style, UBSN 2250-125
19	134-086	1	Tightener Block Mtg Hrd: 1/2" x 4" Bolt, FW, LW & Nut
	171-316* <sup>A</sup>	1	Idlr Sprkt; 100-10 (Order 171-331* & 171-332* Bushings), UBSN 2250-125
20	101-818	1	Chain Tightener Arm (#80)
	101-713* <sup>A</sup>	1	Tightener Arm; Sprocket Style, UBSN 2250-125
21	134-155	2	Tightener Block Mtg Hrd: 1/2" x 2-3/4" Bolt, FW, LW & Nut
a	171-273* <sup>A</sup>	1	Idler Sprocket; 80-11 (Order 171-331* Spacer Bushing), UBSN 2250-125
b	171-264* <sup>A</sup>	1	Idler Sprocket; 60-15, UBSN 2250-125
22	133-914	1	Sprocket; 100-B-13, 2-1/2" Splined Bore
23	133-915	1	Sprocket; 80-B-42, 2-1/2" Splined Bore
24	170-152	1	Snap Ring; 2-1/2", Truarc 5100-250 Or Equiv
25	133-899	1	Seal; 3" ID x 4-1/2" OD
26	171-930	1	Bearing; 3" Spherical Roller, F-B22448E Or Equiv. Mtg Hrd: 3/4" x 2-1/4" Bolt, LW & Nut
27	133-913	1	Sprocket; 100-B-82, 3" Splined Bore
28	171-931	1	Roller Chain; 100H-1-110 Pitch, W/Connector Link
29	171-934	1	Snap Ring; 3", Truarc 5100-300 Or Equiv
30	101-819	1	Chain Tightener Arm (#60)
	101-711* <sup>A</sup>	1	Tightener Arm; Sprocket Style, UBSN 2250-125

A: The current tightener blocks are very wear resistant and can be used in place of idler sprockets. In order to mount the blocks, it is necessary to modify the "sprocket style" tightener arms or replace them with the current "block style" arms.

An asterisk (\*) at the end of a part number (XXX-XXX\*) indicates that the part is no longer used in production for this application. Superscript letters (XXX-XXX<sup>A</sup>) refer to footnotes and/or illustration boxes. 3

**FRONT END PARTS**

RA2250/2300-TOW DR121092



KNIGHT MANUFACTURING CORP. PO BOX 167 BROADHEAD, WI 53520  
OFFICE: (608) 897-2131 PARTS/SERVICE: (608) 897-2125 FAX: (608) 897-2561

**FRONT END PARTS**

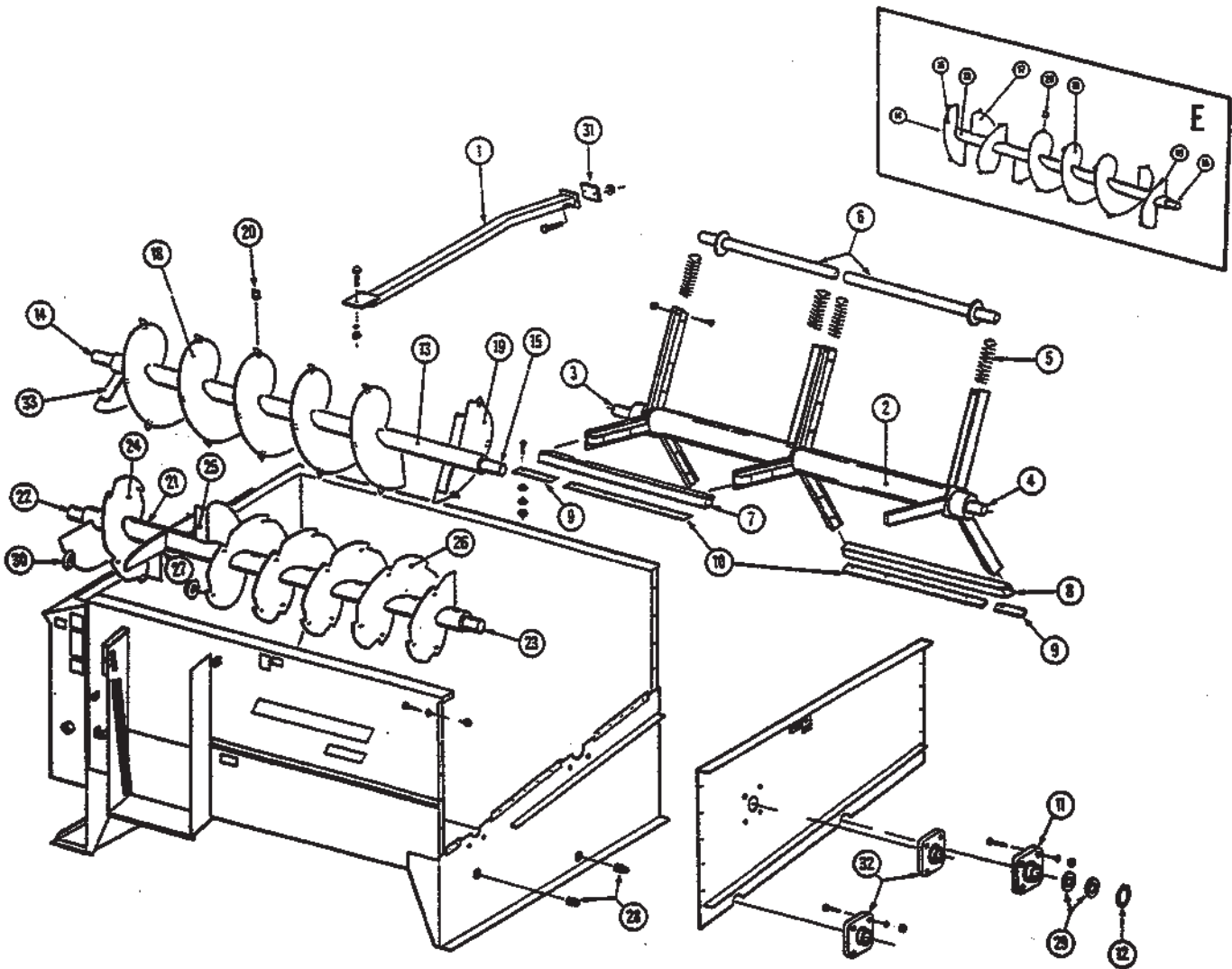
RA2250/2300-TOW DR120192

REF	PART NO	QTY	DESCRIPTION
31	171-951	1	Roller Chain; 60H-1-166 Pitch, W/Connector Link
32	171-919	1	Drain Plug; 1-1/4" PVC
33	171-585	2	Bearing; 1-3/8", FYH NANF 207-22 Or Equiv Mtg Hrd: 1/2" x 1-1/2" Bolt, LW & Nut (3 ea)
34	172-193	2	Locking Collar; 1-3/8"
35	134-372	1	Input Shaft; 1-3/8" x 15-1/2"
	300-017*	1	Input Shaft Kit; Replaces Shafts W/Snap Rings UBSN 2250-484 & 2300-184
36	170-170	2	Key; #1210 Woodruff (3/8" x 1-1/4")
37	133-918	1	Sprocket; 60-B-14, 1-3/8" Bore, 3/8" Keyway
38	133-546	1	Seal; 1-3/8" ID x 2-1/2" OD
39	133-920	1	Belt; PTO Driveline Shield (1/8" x 9" x 16") Mtg Hrd: 5/16" x 3/4" Bolt, FW, & FLN (4 ea)
40	133-849	1	Safety Shield; Front Drive Mtg Hrd: 3/8" NC Wing Nut (171-929) & FW (12 ea)
41	171-935	15'	Front Shield Gasket; 3/8" x 3/4" Closed Cell Foam
42	172-046	A/R	Machine Bushing; 14 Ga, 2.5" ID x 3.5" OD
42	171-968	A/R	Machine Bushing; 10 Ga, 2.5" ID x 3.5" OD
43	134-366	1	Bearing Spacer
44	171-299 <sup>A</sup>	A/R	Compression Fitting; 1/8" NPT, Male
44	172-025 <sup>A</sup>	A/R	Compression Fitting; 1/4" Straight Thread, Male
45	172-027	5	Nylon Tube; 1/8" OD (Requires Trimming)
46	171-299	5	Compression Fitting; 1/8" NPT, Male
47	170-244	5	3/8" Flat Washer
48	172-024	5	Pipe Coupling; 1/8" NPT
49	170-865	5	Zerk Fitting; 1/8" NPT
50	134-756	1	Washer Seal

A: Check bearing threads carefully. Note: The dia. of 1/4" Straight Thread is smaller than 1/8" NPT.

An asterisk (\*) at the end of a part number (XXX-XXX\*) indicates that the part is no longer used in production for this application. Superscript letters (XXX-XXX<sup>A</sup>) refer to footnotes and/or illustration boxes. 5

Model RA2250 Only



REF	PART NO	QTY	DESCRIPTION
1	102-009 <sup>D</sup>	2	Bucket Guard Assembly Mtg Hrd: 3/8" x 1-1/4" Bolt, LW & Nut (3 ea)
2	101-809 <sup>A</sup>	1	Reel Weldment; 3-Arm, 47" Between Spiders
3	101-724	1	Front Plug Assembly
4	101-723	1	Rear Plug Assembly
5	171-920	12	Spring; Reel Cross Pipe Compression
6	101-763 <sup>A</sup>	4	Reel Cross Pipe; 2-7/8" OD, 52" Long Mtg Hrd: 3/8" x 4-1/2" Bolt & Locknut (1 ea)
7	101-802 <sup>A</sup>	1	Front Cross Tube Wiper Assembly; 58-3/16" Long
8	101-803 <sup>A</sup>	1	Rear Cross Tube Wiper Assembly; 58-3/16" Long
9	134-123 <sup>A</sup>	2	Plastic Wiper Blade; 8-1/2" Long Mtg Hrd: 1/4" x 7/8" Bolt, LW, FW & Nut (2 ea)

KNIGHT MANUFACTURING CORP. PO BOX 167 BROADHEAD, WI 53520  
 OFFICE: (608) 897-2131 PARTS/SERVICE: (608) 897-2125 FAX: (608) 897-2561

Model RA2250 Only

REF	PART NO	QTY	DESCRIPTION
10	134-124 <sup>A</sup>	2	Plastic Wiper Blade; 43-3/8" Long
			Mtg Hrd: 1/4" x 7/8" Bolt, LW, FW & Nut (8 ea)
11	170-008	1	Bearing; 2", FYH UCF X10-32E L-III Or Equiv
			Mtg Hrd: 5/8" x 1-3/4" Tap Bolt, LW & Nut (4 ea)
12	170-142	1	Snap Ring; 2", Truarc 5100-200 Or Equiv
13	102-015	1	Upper Auger Assembly
	101-730 <sup>E</sup>	1	Upper Auger Assembly
14	101-731	1	Front Plug Assembly
15	101-708	1	Rear Plug Assembly
16	133-834* <sup>E</sup>	1	Flighting; 1/4" - 4" - 14" - 14" x 7" RH
17	133-907* <sup>E</sup>	1	Flighting; 1/4" - 4" - 14" - 14" x 14" LH
18	134-741	2	Flighting; 3/8" - 4" - 10" - 14" x 53" RH
	133-908* <sup>E</sup>	1	Flighting; 1/4" - 4" - 14" - 14" x 78" RH
19	133-833	1	Flighting; 1/4" - 4" - 14" - 14" x 7" LH
20	133-835 <sup>F</sup>	33	Knife Blade; Upper Auger (Qty May Vary)
			Mtg Hrd: 1/4" x 3/4" Bolt, LW & Nut (2 ea)
21	101-728	1	Lower Auger Assembly
22	101-729	1	Front Plug Assembly
23	101-708	1	Rear Plug Assembly
24	133-832	2	Flighting; 3/8" - 4" - 16" - 16" RH
			Actual Requirements: 1.5 Pcs
25	131-011 <sup>B</sup>	2	Flighting Support Brace
26	133-831	5	Flighting; 3/8" - 4" - 16" - 16" LH
			Actual Requirements: 4.7 Pcs
27	134-499 <sup>C</sup>	2	Paddle
28	171-919	2	Drain Plug; 1-1/4" PVC
29	171-048	A/R	Machine Bushing; 2" ID x 3" OD x .062" Thick
29	171-049	A/R	Machine Bushing; 2" ID x 3" OD x .127" Thick
30	134-351	18	Lower Auger Knife; UASN 2250-484 (Qty May Vary)
			Mtg Hrd: 3/8" x 1" Bolt, LW & Nut
31	134-012	2	Bucket Guard Mount
32	170-000	2	Bearing; 1-3/8", FYH UCF 207-22E Or Equiv
			Mtg Hrd: 1/2" x 1-1/2" Bolt, LW & Nut (4 ea)
33	134-758	4	Flighting Brace

A: The 3-arm reel (101-725\*) UASN 2250-125, has 57" between spiders. It uses four 2-3/8" OD cross pipes (133-909\*), two 56-1/2" long cross tube wiper assemblies (101-732\*), and two 51-3/8" long wiper blades (133-926\*). The current reel will retrofit, but pipes, wipers and blades must also be ordered.

B: Triangular braces were UASN 2250-313. To reduce power requirements, these braces may be trimmed perpendicular to the auger axis, leaving 1-1/2" adjacent to the flighting.

C: UASN 2250-815. Field installation kit #300-023 provides paddles for older units.

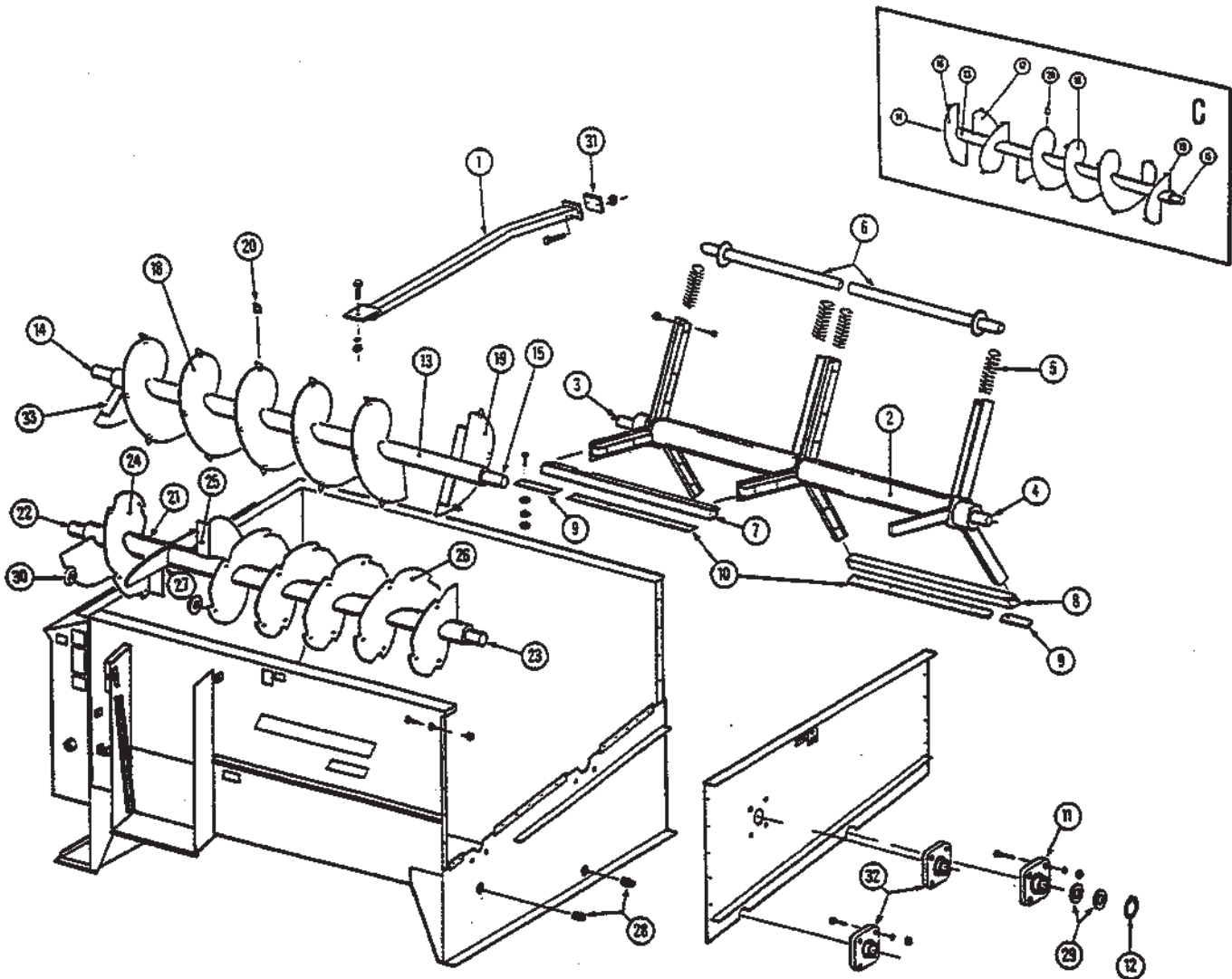
D: Mixer side panel has been redesigned requiring a longer bucket guard assembly. Before Serial# 2250-1185, order 101-755 bucket guard.

E: Upper auger has been changed to a single full flight design. For units before Serial# 2250-1185, repair upper auger (101-730) flighting using: 1ea. (133-834), 1 ea. (133-907), 1 ea. (133-908) & 1 ea. (133-833). Upper auger flighting may be repaired to current (102-015) design by using: 1ea. (134-741), 1 ea. (133-833) & 4 ea. (134-758). See Illustration Box E.

F: Twenty-five upper auger knives required before Serial# 2250-1185.

An asterisk (\*) at the end of a part number (XXX-XXX\*) indicates that the part is no longer used in production for this application. Superscript letters (XXX-XXX<sup>A</sup>) refer to footnotes and/or illustration boxes.

Model RA2300 Only



REF	PART NO	QTY	DESCRIPTION
1	102-009 <sup>B</sup>	2	Bucket Guard Assembly Mtg Hrd: 3/8" x 1-1/4" Bolt, LW & Nut (3 ea)
2	101-868	1	Reel Weldment
3	101-724	1	Front Plug Assembly
4	101-723	1	Rear Plug Assembly
5	171-920	12	Spring; Reel Cross Pipe Compression
6	101-815	4	Reel Cross Pipe; 2-7/8" OD, 64" Long Mtg Hrd: 3/8" x 4-1/2" Bolt & Locknut (1 ea)
7	101-804	1	Front Cross Tube Wiper Assembly
8	101-784	1	Rear Cross Tube Wiper Assembly

KNIGHT MANUFACTURING CORP. PO BOX 167 BRODHEAD, WI 53520  
 OFFICE: (608) 897-2131 PARTS/SERVICE: (608) 897-2125 FAX: (608) 897-2561

**Model RA2300 Only**

REF	PART NO	QTY	DESCRIPTION
9	134-123	2	Plastic Wiper Blade; 8-1/2" Long Mtg Hrd: 1/4" x 7/8" Bolt, LW, FW & Nut (2 ea)
10	134-112	2	Plastic Wiper Blade; 55-3/8" Long Mtg Hrd: 1/4" x 7/8" Bolt, LW, FW & Nut (10 ea)
11	170-008	1	Bearing; 2", FYH UCF X10-32E L-III Or Equiv Mtg Hrd: 5/8" x 1-3/4" Tap Bolt, LW & Nut (4 ea)
12	170-142	1	Snap Ring; 2", Truarc 5100-200 Or Equiv.
13	102-101	1	Upper Auger Assembly
	101-870* <sup>C</sup>	1	Upper Auger Assembly
14	101-731	1	Front Plug Assembly
15	101-708	1	Rear Plug Assembly
16	133-834* <sup>C</sup>	1	Flighting; 1/4" - 4" - 14" - 14" x 7" RH
17	133-907* <sup>C</sup>	1	Flighting; 1/4" - 4" - 14" - 14" x 14" LH
18	134-742	1	Flighting; 3/8" - 4" - 10" - 14" - 126.5 RH
	134-304* <sup>C</sup>	1	Flighting; 1/4" - 4" - 14" - 14" x 102" RH
19	133-833	1	Flighting; 1/4" - 4" - 14" - 14" x 7" LH
20	133-835 <sup>D</sup>	42	Knife Blade; Upper Auger (Qty May Vary) Mtg Hrd: 1/4" x 3/4" Bolt, LW & Nut (2 ea)
21	101-871	1	Lower Auger Assembly
22	101-869	1	Front Plug Assembly
23	101-708	1	Rear Plug Assembly
24	133-832	2	Flighting; 3/8" - 4" - 16" - 16" RH Actual Requirements: 1.5 Pcs
25	131-011	2	Flighting Support Brace
26	133-831	7	Flighting; 3/8" - 4" - 16" - 16" LH Actual Requirements: 6.75 Pcs
27	134-499 <sup>A</sup>	2	Paddle
28	171-919	2	Drain Plug; 1-1/4" PVC
29	171-048	A/R	Machine Bushing; 2" ID x 3" OD x .062" Thick
29	171-049	A/R	Machine Bushing; 2" ID x 3" OD x .127" Thick
30	134-351	22	Lower Auger Knife; UASN 2300-184 (Quantity May Vary) Mtg Hrd: 3/8" x 1" Bolt, LW & Nut
31	134-012	2	Bucket Guard Mount
32	170-000	2	Bearing; 1-3/8", FYH UCF 207-22E Or Equiv Mtg Hrd: 1/2" x 1-1/2" Bolt, LW & Nut (4 ea)
33	134-758	4	Flight Brace

A: UASN 2300-492. Field installation kit #300-023 provides paddles for older units.

B: Mixer side panel has been redesigned requiring a longer bucket guard assy. Before Serial# 2300-928, use (101-755) bucket guard.

C: Upper auger has changed to a single full flight design. For units before Serial# 2300-928, repair upper auger (101-870) using: 1 ea. (133-834), 1 ea. (133-907), 1 ea. (134-304) & 1 ea. (1339-833). Upper auger flighting may be repaired to current (102-101) design by using: 1 ea. (134-742), 1 ea. (133-833) & 4 ea.(134-758). See illustration Box C.

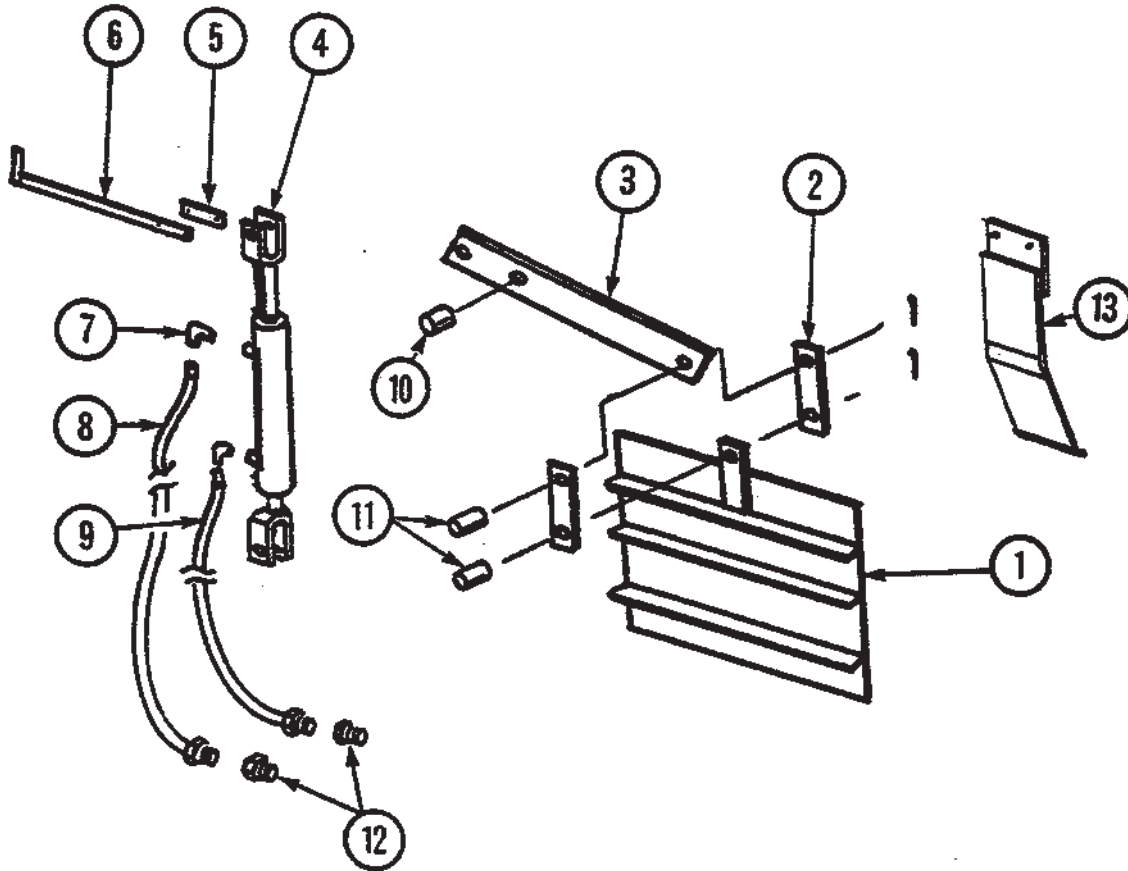
D: Thirty-one upper auger knives required before Serial# 2300-928.

An asterisk (\*) at the end of a part number (XXX-XXX\*) indicates that the part is no longer used in production for this application. Superscript letters (XXX-XXX<sup>A</sup>) refer to footnotes and/or illustration boxes. 9

DOOR PARTS

RA2250/2300-TOW DR082791

REF	PART NO	QTY	DESCRIPTION
1	101-722	1	Door Assembly
2	133-445	2	Door Linkage Bar; 3/8" x 2" x 8"
3	133-924	1	Door Pivot Bar; 5/8" x 4" x 31"
4	170-941	1	Hyd Cylinder; 2" x 8" (Seal Kit #170-075)
5	133-978	1	Door Gauge Mount; 1/8" x 5/8" x 3-1/4"
6	133-977	1	Door Gauge; 1/8" x 5/8" x 18-1/2"
			Mtg Hrd: 1/4" x 1" Bolt, LW & Nut (2 ea)
7	171-030	2	Swivel Adapter; 3/8" - 90 Degrees
8	170-471	1	Hyd Hose; 1/4" x 170" Overall Length
9	170-468	1	Hyd Hose; 1/4" x 162" Overall Length
10	170-073	1	Pin (1" Dia) For Door Pivot Bar (133-924)
			Secures With 170-074 Hairpin Clip
11	171-696	2	Pin For Door Linkage Bar (133-445)
			Secures With 170-236 (5/32" x 1-1/2" Cctr. Pin)
12	170-235	2	Reducer Bushing; 1/2" To 3/8"
13	300-022	A/R	Door Flow Control Plate Kit (Optional, Max Qty 2)

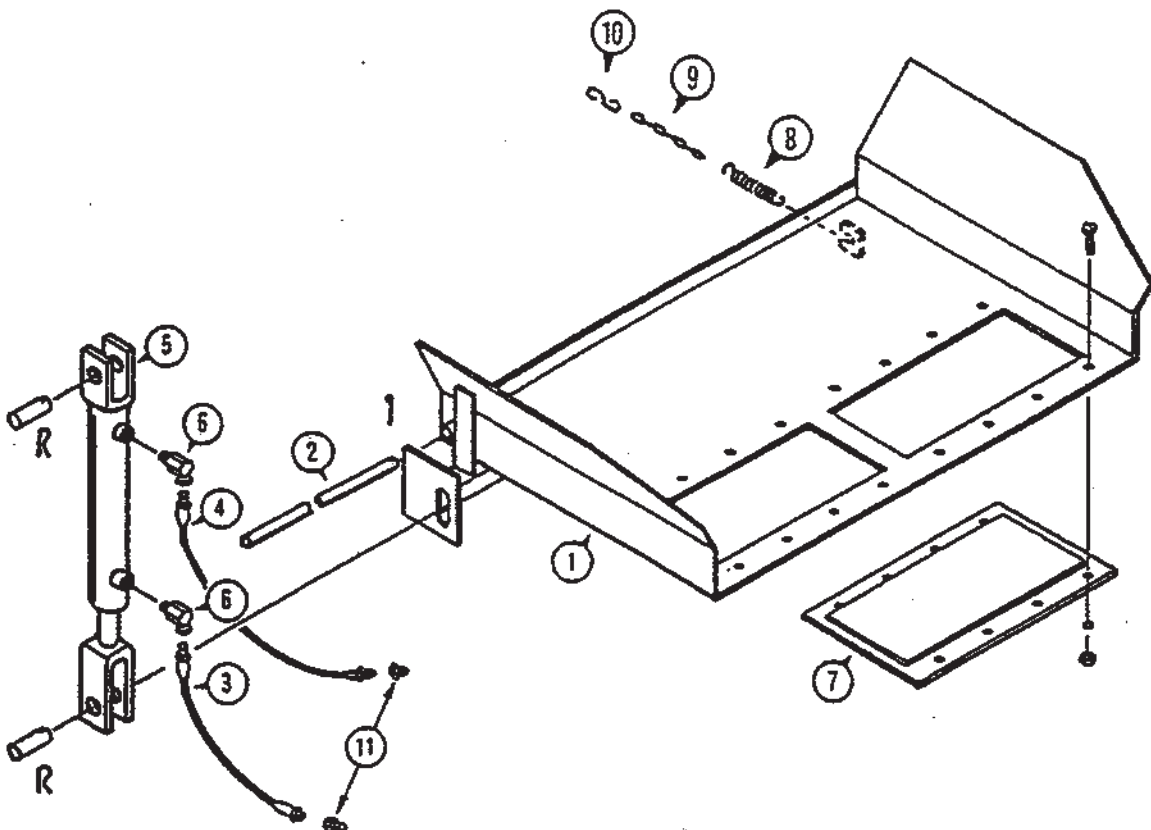


KNIGHT MANUFACTURING CORP. PO BOX 167 BRODHEAD, WI 53520  
 OFFICE: (608) 897-2131 PARTS/SERVICE: (608) 897-2125 FAX: (608) 897-2561

SLIDE TRAY PARTS

RA2250/2300-TOW CR082692

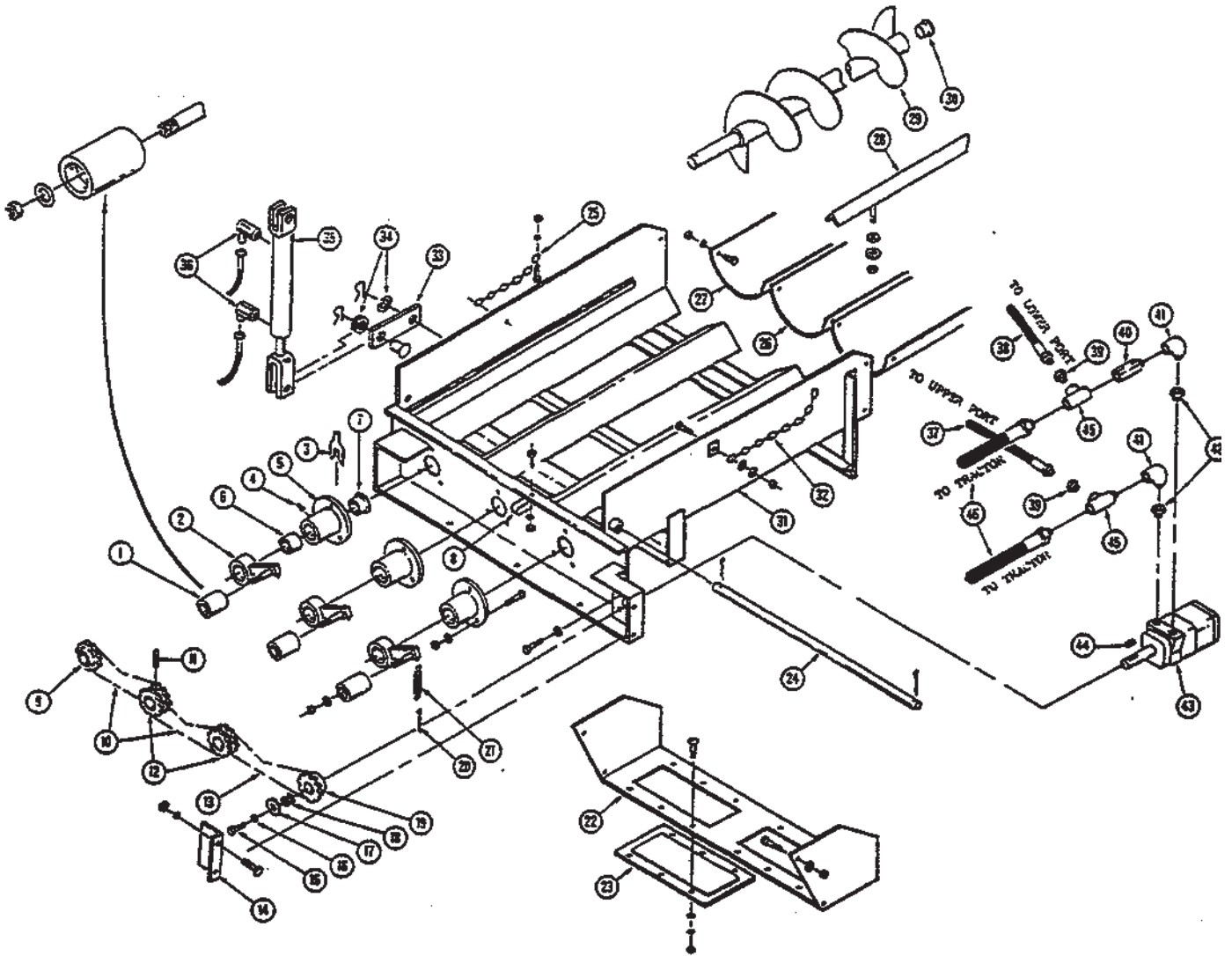
REF	PART NO	QTY	DESCRIPTION
1	101-747	1	Slide Tray Assembly (See Decal Section For Decals)
2	133-951	1	Tray Mtg Rod; 3/4" x 39.5" Long Mtg Hrd: 170-115 Cotter Pin (2 ea)
3	170-468	1	Hydraulic Hose Assy; 1/4" x 162" Overall Length
4	170-471	1	Hydraulic Hose Assy; 1/4" x 170" Overall Length
5	170-941	1	Hydraulic Cylinder; 2" x 8" (Seal Kit #170-075)
6	171-030	2	Swivel Connector; 3/8" - 90 Degree
7	171-937	2	Magnet Mtg Hrd: 1/4" x 3/4" Truss Head Bolt, LW, FW & Nut (12 ea)
8	172-005	1	Spring
9	170-479	1	Machine Chain; #4 x 9 Link
10	170-947	1	S-Hook
11	170-235	1	Reducer Bushing; 1/2" To 3/8"



KNIGHT MANUFACTURING CORP. PO BOX 167 BRODHEAD, WI 53520  
 OFFICE: (608)897-2131 PARTS/SERVICE: (608)897-2125 FAX: (608)897-2561 11

POWER CHUTE PARTS (SIDE MOUNT MOTOR)

RA2250/2300-TOW R122190



POWER CHUTE PARTS (SIDE MOUNT MOTOR)

REF	PART NO	QTY	DESCRIPTION
	101-896	1	Complete Chute Assembly
1	134-395	3	Poly Block Mtg Hrd: 5/8" LW & Jam Nut
2	101-231	3	Chain Tightener Arm
3	171-265	A/R	Shim; .017" Thick
	171-266	A/R	Shim; .030" Thick
4	170-865	3	Zerk; 1/8" NPT

KNIGHT MANUFACTURING CORP. PO BOX 167 BRODHEAD, WI 53520  
 OFFICE: (608) 897-2131 PARTS/SERVICE: (608) 897-2125 FAX: (608) 897-2561

## POWER CHUTE PARTS (SIDE MOUNT MOTOR)

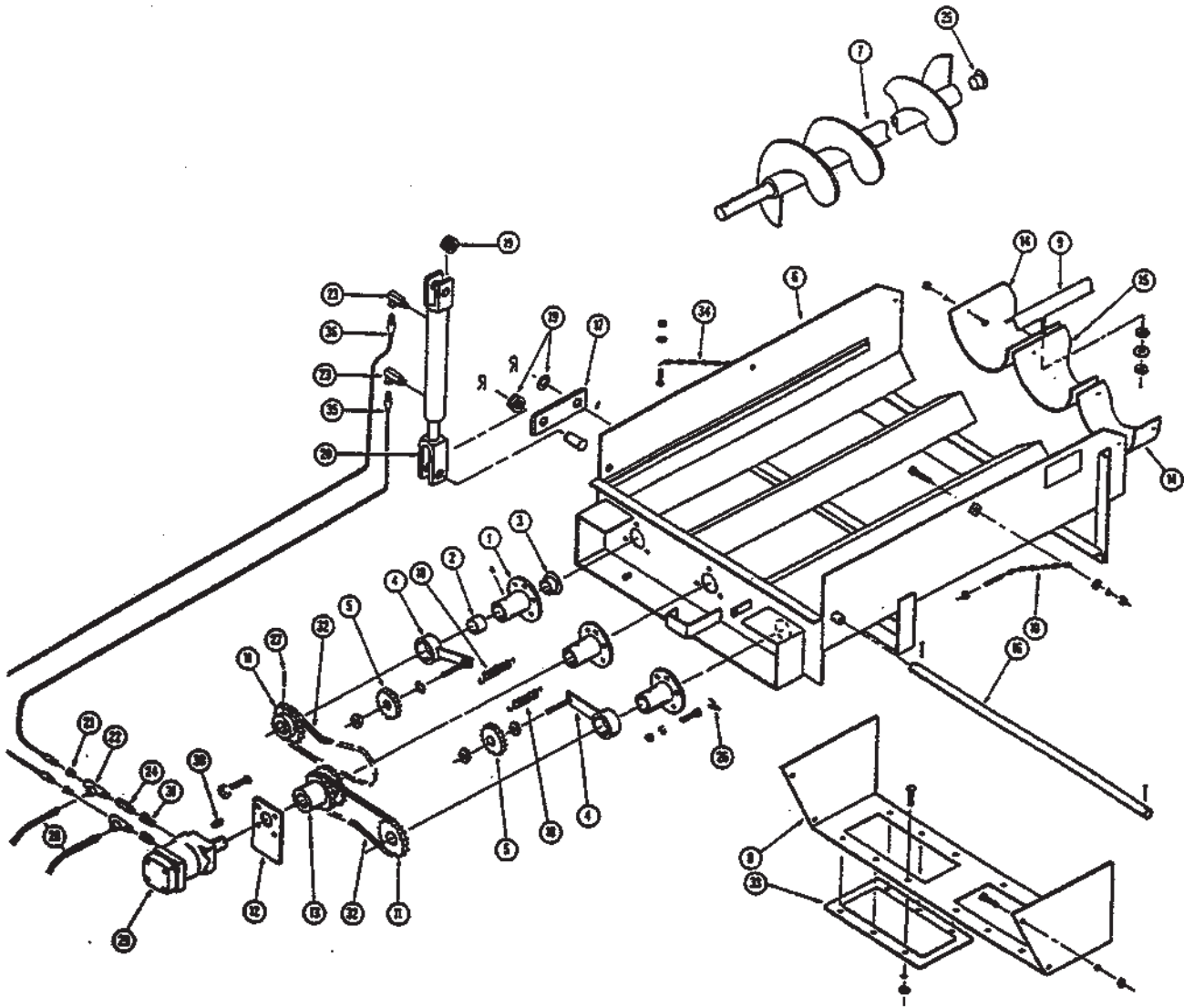
RA2250/2300-TOW DR082692

REF	PART NO	QTY	DESCRIPTION
5	101-227	3	Auger Bearing Assembly Mtg Hrd: 1-3/8" x 1" Bolt, LW & Nut (3 ea)
6	171-259	1	Bushing; Bronze, 1-3/8" I.D.
7	171-260	1	Bushing; Bronze 1-3/8" I.D. Flanged
8	171-782	1	Double Hose Clamp Mtg Hrd: 5/16" x 3/4" Bolt, LW & Nut
9	132-701	1	Sprocket; 50-B-18, 1-3/8" Bore
10	171-932	2	Roller Chain; 50-1-56 Pitch
11	171-297	3	Roll Pin; 1/4" x 2-1/2"
12	134-390	2	Sprocket; 50-2R-18, 1-3/8" Bore
13	171-178	1	Roller Chain; 50-1-48 Pitch
14	134-394	1	Motor Drive Shield; Mtg Hrd: 5/16" x 3/4" Bolt, LW & Nut (2 ea)
15	170-262	1	Bolt; 5/16" x 3/4" Hex Head
16	170-118	1	Washer; 5/16" Lock
17	170-302	1	Washer; 3/8" Heavy
18	171-576	1	Machine Washer
19	134-389	1	Sprocket; 50-B-18, 1" Bore
20	170-135	3	Cotter Pin; 5/32" x 3"
21	170-110	3	Spring
22	101-737	1	Tipoff Assembly Mtg Hrd: 5/16" x 3/4" Bolt, LW & Nut (4 ea)
23	171-937	2	Magnet Mtg Hrd: 1/4" x 3/4" Truss Head Bolt LW, FW & Nut (6 ea)
24	133-951	1	Tipoff Pivot Rod Mtg Hrd: 170-115 Cotter Pin (2 ea)
25	101-739	1	Chute Restraint Chain Assy Mtg Hrd: 5/16" x 1" Bolt, LW & Nut
26	133-943	1	Plastic Chute Liner - Center
27	133-942	2	Plastic Chute Liner - Side Mtg Hrd: 1/4" x 3/4" Truss Head Bolt, LW & Nut (2 ea)
28	101-738	2	Liner Hold-Down Assy
29	101-736	3	Auger Assy
30	171-186	3	Plastic Cap Plug; #16
31	101-897	1	Chute Weldment
32	171-938	1	Chain; 4/0 Coil x 21 Link Mtg Hrd: 5/16" x 1" Bolt, LW & Nut
33	133-952	1	Chute Cylinder Linkage Bar Mtg Hrd: 170-074 Hairpin Clip (2 ea)
34	170-122	A/R	Spacer Washer; 1" Sae Flat
35	170-161	1	Hydraulic Cylinder; 2" x 18" (Seal Kit #170-075)
36	171-030	2	Swivel Adapter; 3/8" x 90 Degree
37	171-427	1	Hyd Hose; 1/4" x 80" Overall Length
38	171-940	1	Hyd Hose; 1/4" x 64" Overall Length
39	170-235	2	Reducer Bushing; 1/2" to 3/8"
40	171-151	1	Line Check Valve; 1/2"
41	171-136	2	90 Degree Street Elbow; 1/2"
42	171-668	2	Straight Thread Adapter
43	171-666	1	Hyd Motor; 12 cu. in. (Seal Kit #171-257) Mtg Hrd: 3/8" x 7/8" Bolt, LW, & Nut (4 ea)
44	171-883	1	Key; 1/4" x 1/4" x 1" Long
45	170-859	2	Service Tee; 1/2"
46	171-330	2	Hyd Hose; 1/2" x 168" Overall Length

12-B

POWER CHUTE PARTS (CENTER MOUNT MOTOR)

RA2250/2300-TOW R011691



POWER CHUTE PARTS (CENTER MOUNT MOTOR)

RA2250/2300-TOW R122190

This power chute was produced between 2-88 and 11-90. It has been replaced with the "Side Mount Motor" Power Chute as of 12-90.

REF	PART NO	QTY	DESCRIPTION
	101-734*	1	Complete Chute Assembly (No Longer Available)
1	101-227*	3	Auger Bearing Assy; Includes Grease Zerk (170-865) Mtg Hrd: 3/8" x 1" Bolt, LW & Nut (3 ea)
2	171-259*	1	Bushing; Bronze, 1-3/8" ID
3	171-260*	1	Bushing; Bronze, 1-3/8" ID, Flanged
	101-232*	1	RH Chain Tightener Assembly
4	101-231*	1	Chain Tightener Arm
5	171-272*	1	Sprocket; 50-15, Idler Mtg Hrd: 5/8" LW & Jam Nut
	101-233*	1	LH Chain Tightener Assembly
4	101-231*	1	Chain Tightener Arm
5	171-272*	1	Sprocket; 50-15, Idler Mtg Hrd: 5/8" Jam Nuts (2)
6	101-735 <sup>A</sup> *	1	Power Chute Weldment (No Longer Available)
7	101-736*	3	Auger Assembly
8	101-737*	1	Tipoff Assembly Mtg Hrd: 5/16" x 1" Bolt, LW & Nut
9	101-738*	2	Liner Hold-Down Assy Mtg Hrd: 3/8" FW, Nut & 1/2" Spacer LN (2 ea)
10	101-739*	1	Chute Restraint Chain Assembly Mtg Hrd: 5/16" x 1" Bolt, LW & Nut
11	132-701*	2	Sprocket; 50-B-18, 1-3/8" Bore
12	132-749*	1	Motor Mount Plate
13	132-756*	1	Sprocket; 50-2R-B-18, 1-3/8" Bore
14	133-942*	2	Plastic Chute Liner - Side
15	133-943*	1	Plastic Chute Liner - Center Mtg Hrd: 1/4" x 3/4" Truss Head, LW & Nut (2 ea)
16	133-951*	1	Tipoff Pivot Rod Mtg Hrd: 170-115 Cotter Pin (2 ea)
17	133-952*	1	Chute Cylinder Linkage Bar Mtg Hrd: Two 170-074 Hairpin Clips
18	170-110*	2	Spring
19	170-122*	A/R	Spacer Washer; 1" SAE Flat
20	<del>170-161*</del> <sup>13-B</sup>	1	Cylinder; 2" x 18" (Seal Kit #170-075)
21	170-235*	2	Reducer Bushing; 1/2" To 3/8"
22	170-859*	2	Service Tee; 1/2"
23	171-030*	2	Swivel Adapter; 3/8" - 90 Degree
24	171-151*	1	Line Check Valve; 1/2"
25	171-186*	3	Plastic Cap Plug; #16
26	171-265*	A/R	Shim; .017" Thick
26	171-266*	A/R	Shim; .030" Thick
27	171-297*	3	Roll Pin; 1/4" x 2-1/2"
28	171-330*	2	Hyd Hose; 1/2" x 168" Overall Length
29	171-666*	1	Hyd Motor; 12 Cu. In. (Seal Kit #171-257) Mtg Hrd: 3/8" x 7/8" Bolt & LW (4 ea)
30	171-883*	1	Key For Hyd Motor; 1/4" x 1/4" x 1" Long
	170-861*	1	Woodruff Key For Hyd Motor; 1/4" x 1", Used Before 11-89
31	171-668*	2	Straight Thread Adapter
32	171-932*	2	Roller Chain; 50-1-56 Pitch
33	171-937*	2	Magnet Mtg Hrd: 1/4" x 3/4" Truss Head, LW, FW & Nut
34	171-938*	1	Chain; 4/0 Coil x 21 Links Mtg Hrd: 5/16" x 1" Bolt, FW & FLN
35	171-939*	1	Hyd Hose; 1/4" x 41" Overall Length
36	171-940*	1	Hyd Hose; 1/4" x 64" Overall Length

A: The 101-897 "Side Motor Mount" Power Chute Weldment will substitute for the 101-735 weldment. Additional parts are necessary. Contact Knight Mfg. for details.

13-B

A \* following a part number (XXX-XXX\*) indicates that the part is no longer used in production for this application. Superscript letters (XXX-XXX<sup>A</sup>) refer to footnotes and/or illustration boxes.

SELECTOR VALVE - SLIDE TRAY OPTION

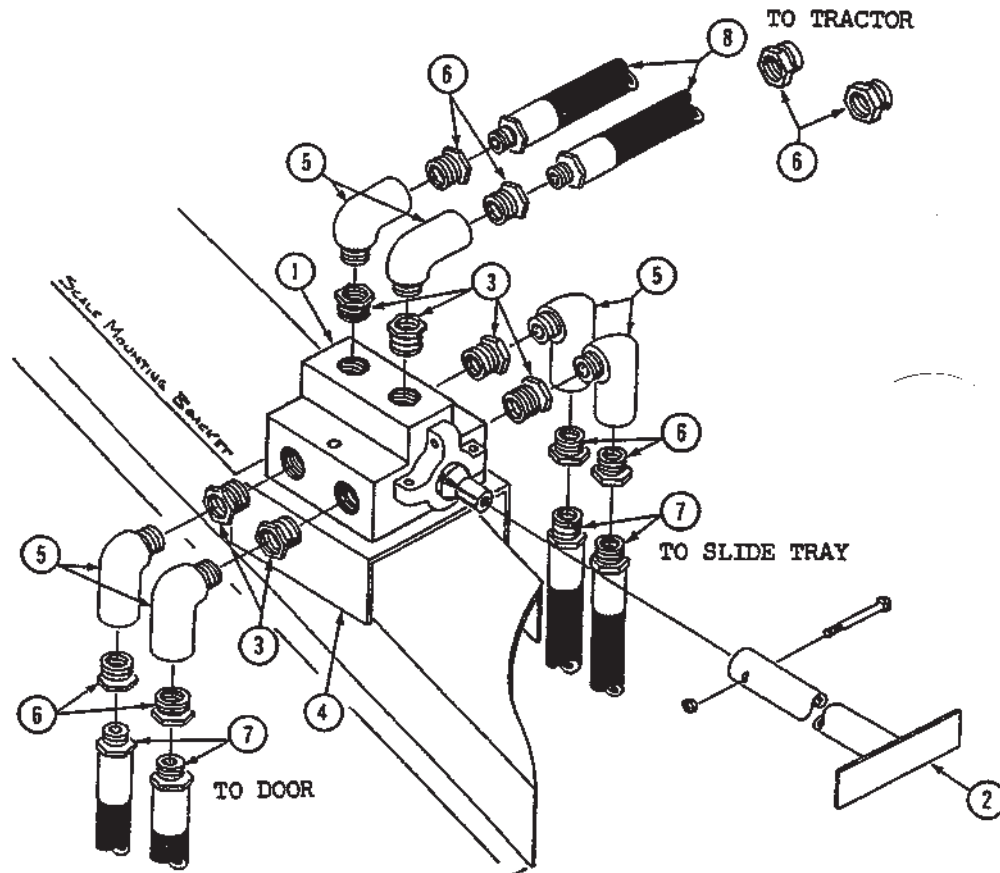
RA2250/2300-TOW R081790

FACTORY INSTALLED PARTS:

REF	PART NO	QTY	DESCRIPTION
1	101-891	1	Selector Valve Assy W/Sleeve Mtg Hrd: 5/16" x 2-1/2" Bolt, LW & Nut (2 ea)
2	101-791	1	Control Handle Assy Mtg Hrd: 1/4" x 1-1/2" Bolt & LN
3	171-430	6	Reducer Bushing; 3/4" Male To 1/2" Female
4	134-136	1	Mounting Bracket Mtg Hrd: 1/4" x 3/4" Bolt, LW & Nut (4 ea)
5	171-136	6	Street Elbow; 1/2" - 90 Degree
6	170-235	8	Reducer Bushing; 1/2" Male To 3/8" Female
7	170-465	4	Hyd Hose 1/4" x 127"
8	171-998	2	Hyd Hose 1/4" x 117"

FIELD INSTALLATION NOTE:

The field installation kit (P/N 300-010) contains all of the above parts except for four reducer bushings (P/N 170-235) and four hydraulic hoses (P/N 170-465).



KNIGHT MANUFACTURING CORP. PO BOX 167 BRODHEAD, WI 53520  
OFFICE: (608) 897-2131 PARTS/SERVICE: (608) 897-2125 FAX: (608) 897-2561

**DIVERTER VALVE - POWER CHUTE OPTION**

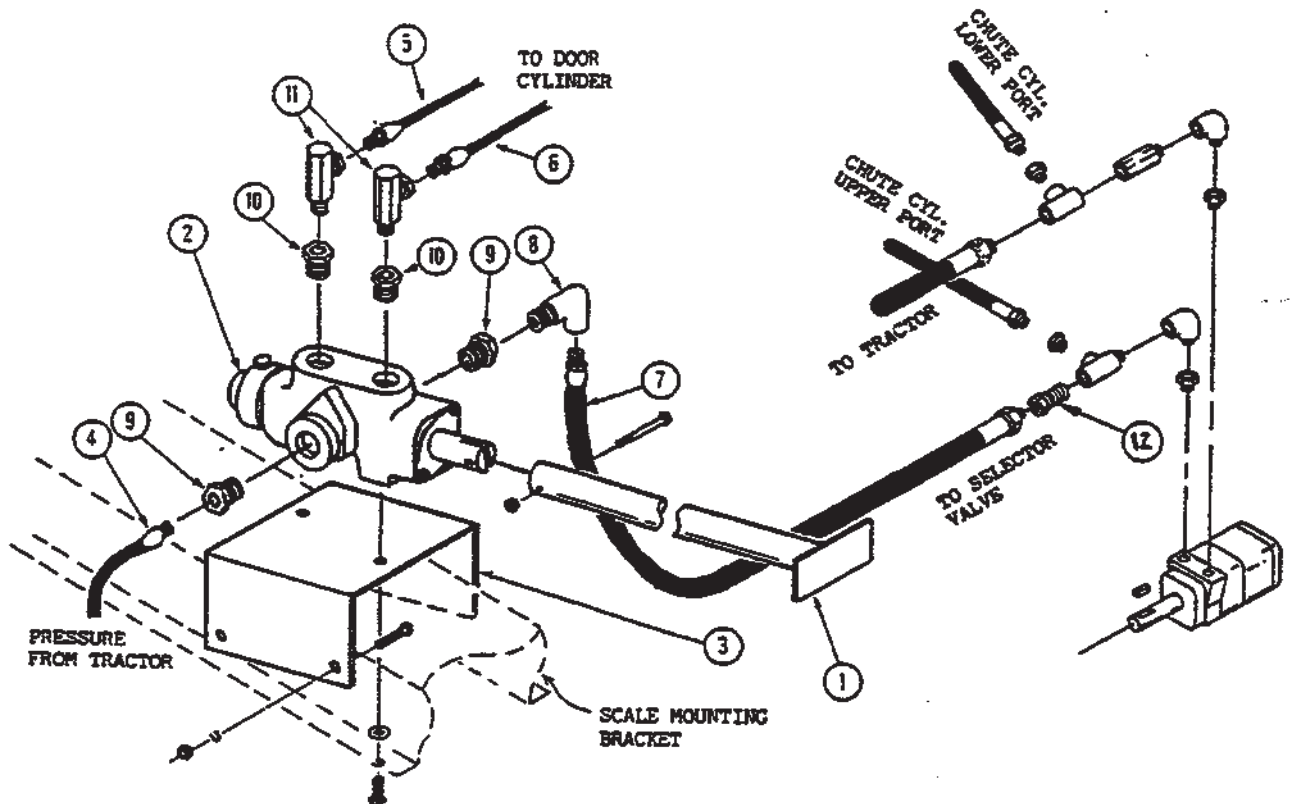
RA2250/2300-TOW R122090

**FACTORY INSTALLED PARTS:**

REF	PART NO	QTY	DESCRIPTION
1	101-791	1	Control Handle Assy
2	171-424	1	Diverter Valve Assy (Seal Kit #171-847)
3	134-136	1	Mounting Bracket
4	171-426	1	Mtg Hrd; 1/4" x 3/4" Bolt, LW & Nut
5	170-465	1	Hyd Hose; 1/2" x 96" Long 1/2" Ends
6	171-998	1	Hyd Hose; 1/4" x 127" Long 3/8" Ends
7	171-189	1	Hyd Hose; 1/4" x 117" Long 3/8" Ends
8	171-136	1	Hyd Hose; 1/2" x 108" Long 1/2" Ends
9	171-430	2	Connector; Elbow 1/2" - 90 Degree
10	170-235	2	Connector; Reducer 3/4" To 1/2"
11	171-030	2	Connector; Reducer 1/2" To 3/8"
12	170-513	2	Connector; Swivel 3/8" - 90 Degree
		1	Connector; Swivel 1/2" Straight

**FIELD INSTALLATION NOTE:**

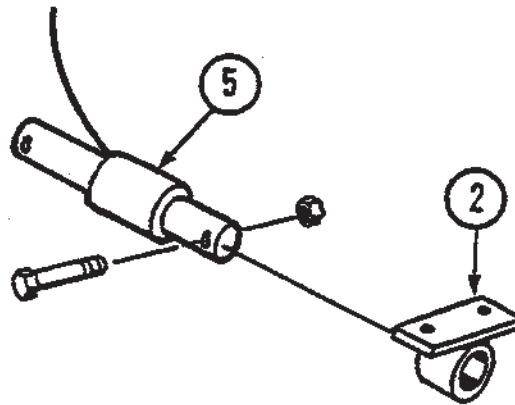
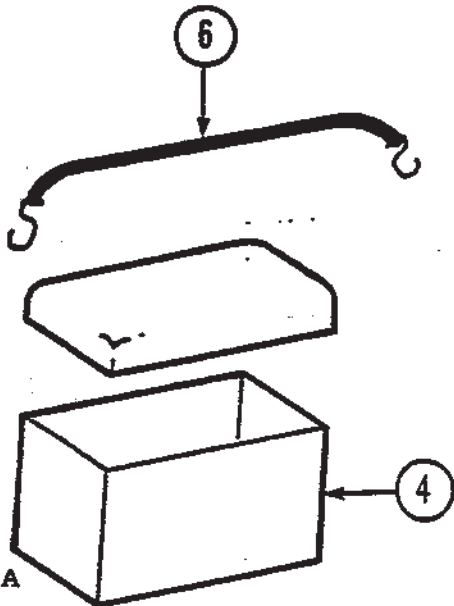
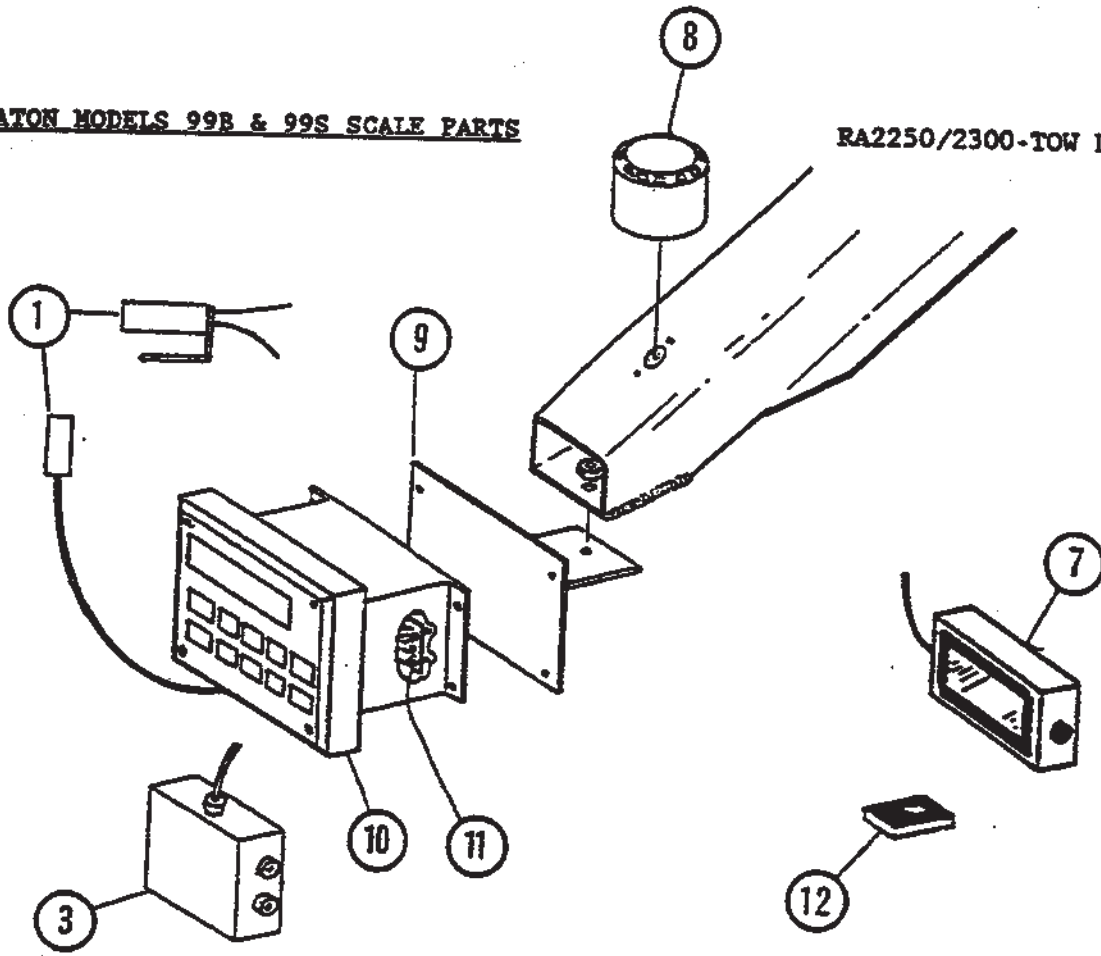
The field installation kit (P/N 300-006) contains all of the above parts except for references 5 - 7 (Field kit doesn't include 170-465, 171-998 and 171-189).



A \* following a part number (XXX-XXX\*) indicates that the part is no longer used in production for this application. Superscript letters (XXX-XXX<sup>A</sup>) refer to footnotes and/or illustration boxes.

**EATON MODELS 99B & 99S SCALE PARTS**

RA2250/2300-TOW DR060791



16-A

KNIGHT MANUFACTURING CORP. PO BOX 167 BROADHEAD, WI 53520  
OFFICE: (608) 897-2131 PARTS/SERVICE: (608) 897-2125 FAX: (608) 897-2561

**EATON SCALE PARTS**

RA2250/2300-TOW DR030493

REF	PART NO	QTY	DESCRIPTION
1	170-415	1	Plug - Tractor Mount
1	172-333	1	Power Cord Assembly
2	101-742	4	Weigh Bar Mount Spool      Mtg Hrd To Unit: 5/8" x 1-3/4" Gr 5 Bolt, FW & LN (2 ea)
3	172-335	1	Junction Box With 15' Cord
4	171-158	1	Battery Box With Cover
5	171-557	2	Weigh Bar; 2-1/8" Dia, 15' Cord Length (Front)
5	171-558	2	Weigh Bar; 2-1/8" Dia, 30' Cord Length (Rear)
	171-960		Splice Kit - For Weigh Bar Cord Repair
6	171-936	1	Battery Hold-Down Strap
7	172-336	1	Remote Display With 30' Cable
8	101-916	1	Alarm Horn Assembly Mtg Hrd: #6 x 3/4" Bolt, LW & Nut (2 ea)
9	133-378	1	Indicator Mount      Mtg Hrd: 170-238 Spring, 3/8" x 2" Bolt, FW & LN

**Items Used With Model 99B Only:**

10	172-329	1	Indicator; Model 99B (2-1/8" Weigh Bars) Mtg Hrd: 1/4" x 3/4" Bolt, FW, LW & Nut (4 ea)
	172-339	1	Operator's Manual; Model 99B

**Items Used With Model 99S Only:**

10	172-331	1	Indicator; Model 99S (2-1/8" Weigh Bars) Mtg Hrd: 1/4" x 3/4" Bolt, FW, LW & Nut (4 ea)
	172-340	1	Operator's Manual; Model 99S
11	172-337 <sup>A</sup>	1	Radio Control Package
12	172-338	1	Transmitter; Radio Control

**Items Used With Model 9TL Only:**

10	172-499	1	Indicator; Model 9T (2-1/8" & 2-1/2" Weigh Bars) Mtg Hrd: 1/4" x 3/4" Bolt, FW, LW & Nut (4 ea)
	172-498	1	Operators Manual; Model 9TL

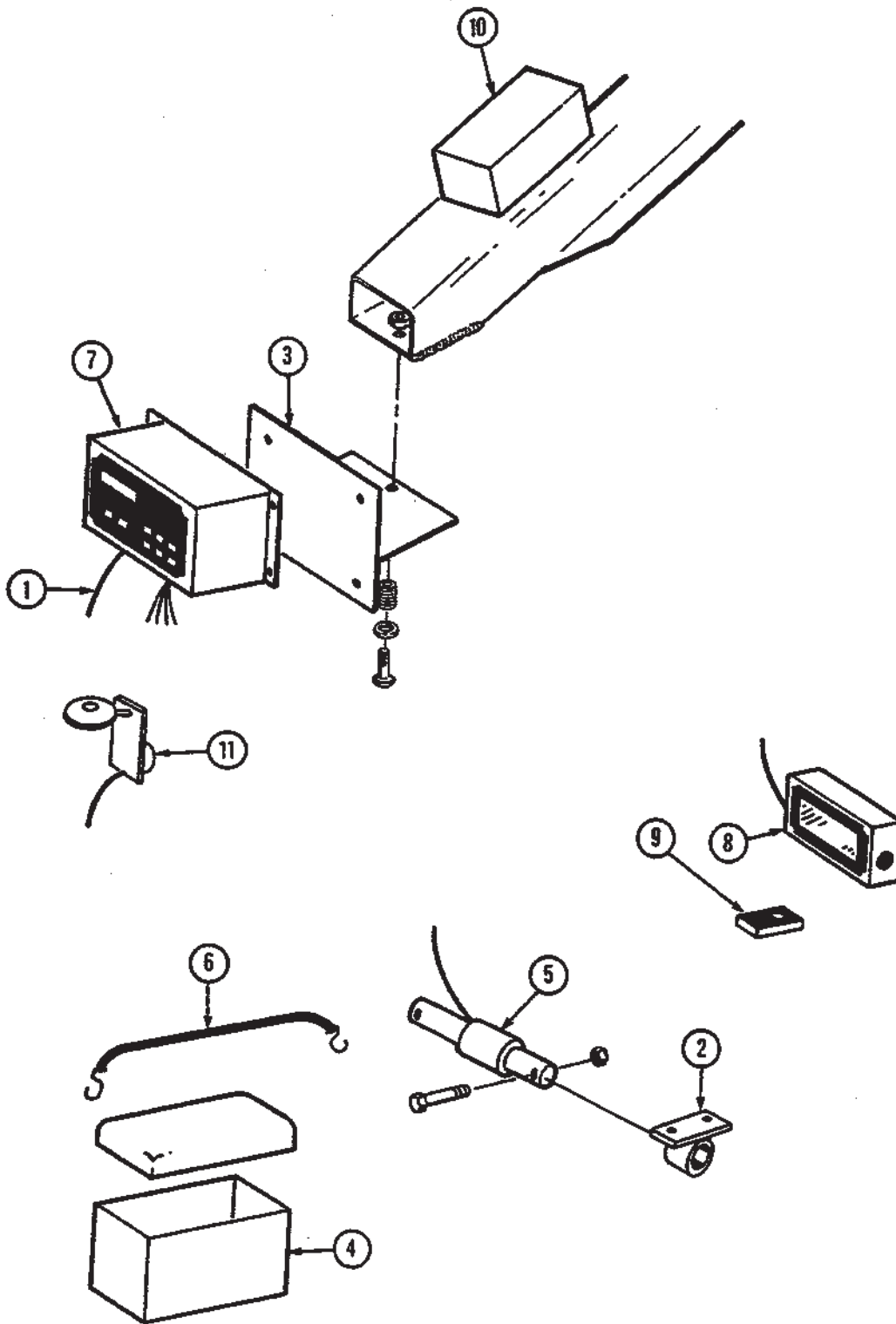
**Service Tools:**

	172-386	1	Precision Calibrator For Scale Indicators
--	---------	---	---

A: Indicator must be sent to Knight Mfg. for radio control card installation.

16-B

An asterisk (\*) at the end of a part number (XXX-XXX\*) indicates that the part is no longer used in production for this application. Superscript letters (XXX-XXX<sup>A</sup>) refer to footnotes and/or illustration boxes.



17-A

EATON MODELS 625 & 630 SCALE PARTS

RA2250/2300-TOW DR061191

Part numbers apply to both models (625 &amp; 630) unless otherwise specified.

REF	PART NO	QTY	DESCRIPTION
1	101-502	1	Power Cord Assembly
2	101-742	4	Weigh Bar Mount Spool
			Mtg Hrd To Unit: 5/8" x 1-3/4" Gr 5 Bolt, FW & LN (2 ea)
3	133-378	1	Indicator Mount
			Mtg Hrd: 170-238 Spring, 3/8" x 2" Bolt, FW & LN
4	171-158	1	Battery Box
5	171-557	2	Weigh Bar; 2-1/8" Dia, 15' Cord Length (Front)
5	171-558	2	Weigh Bar; 2-1/8" Dia, 25' Cord Length (Rear)
	171-960		Splice Kit - For Weigh Bar Cord Repair
6	171-936	1	Battery Hold-Down Strap

## Items Used With Model 625 Only:

	171-785	1	Operator's Manual
7	171-784 <sup>A</sup>	1	Indicator Unit; Model 625, 20K x 5# Mtg Hrd: 1/4" x 3/4" Bolt, LW & Nut (4 ea)
8	171-790	1	Remote Display
8	171-791	1	Kit - Radio And Remote Display
9	171-789	1	Transmitter
10	171-787	1	Kit - Radio Control
9	171-789	1	Transmitter

## Items Used With Model 630 Only:

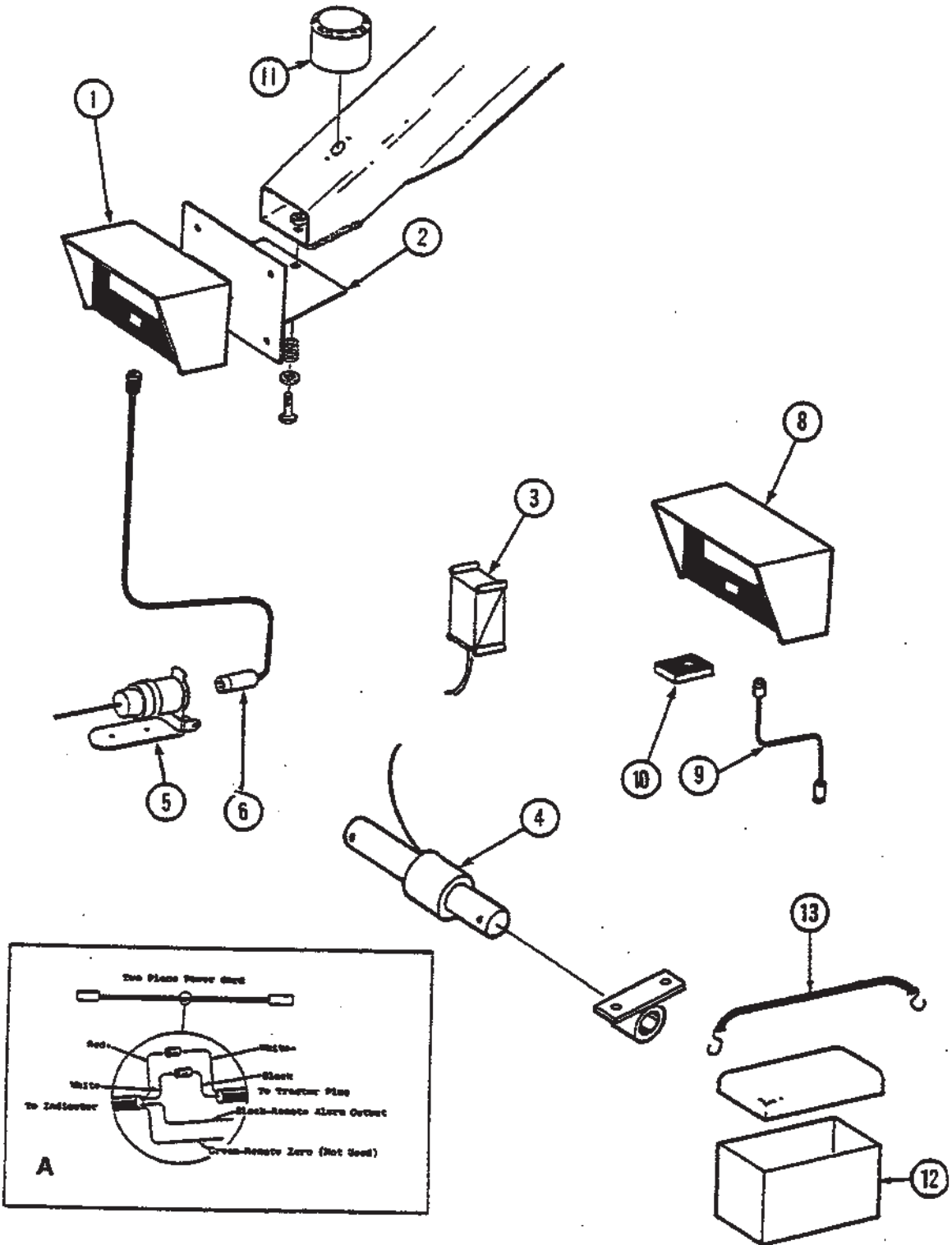
	171-786	1	Operator's Manual
7	171-552 <sup>A</sup>	1	Indicator Unit; Model 630, 40K x 10# Mtg Hrd: 1/4" x 3/4" Bolt, LW & Nut (4 ea)
8	171-957	1	Remote Display
11	101-390 <sup>B</sup>	1	Horn/Lite Assembly Mtg Hrd: 3/8" x 1" Bolt, LW & Nut

A: This indicator can be replaced with an Eaton Model 99 indicator. Consult Knight Mfg. for details.

B: The 101-390 Horn/Light Assembly can be replaced with the 101-916 Alarm Horn Assembly.

17-B

A \* following a part number (XXX-XXX\*) indicates that the part is no longer used in production for this application. Superscript letters (XXX-XXX<sup>A</sup>) refer to footnotes and/or illustration boxes.



18-A

**J-STAR SCALE PARTS**

RA2250/2300-TOW DR042893

REF	PART NO	QTY	DESCRIPTION
1	172-128 <sup>B</sup>	1	Model EZ-150 Indicator For 2-1/8" Weigh Bar
	172-130 <sup>B</sup>	1	Model EZ-210 Indicator For 2-1/8" Weigh Bar
	172-500	1	Model EZ-320 Indicator For 2-1/8" Weigh Bar
			Mtg Hrd: 1/4" x 3/4" Bolt, FW, LW & Nut (2 ea)
2	101-835	1	Indicator Mount Mtg Hrd: Spring (170-238)
			3/8" x 2" Bolt, FW & LN
3	172-134	1	Junction Box
4	172-138	4	Weigh Bar; 2-1/8" Dia
	171-960		Splice Kit - For Weigh Bar Cord Repair
5	170-415	1	Plug - Tractor Mount
6	172-354	1	Power Cord Assy
6	172-183* <sup>A</sup>	1	Power Cord - Scale End
6	171-896* <sup>A</sup>	1	Power Cord - Tractor End

**Optional Items:**

8	172-140	1	Model 20R Remote Display (Less Cable)
	172-141	1	Model 20R/TR R.D. W/Transmitter (Less Cable)
9	172-142	1	Cable For P/N 172-140 & 172-141
10	172-143	1	Extra Transmitter For Model 20R/TR
	172-165	1	30' J-Box Extension Cable (Optional)
	172-166	1	10' J-Box Extension Cable (Optional)
11	101-917	1	Alarm Horn Assembly
			Mtg Hrd: #6 x 3/4" Bolt, LW & Nut (2 ea)
12	171-158	1	Battery Box
13	171-936	1	Battery Hold-Down Strap

**Service Tools:**

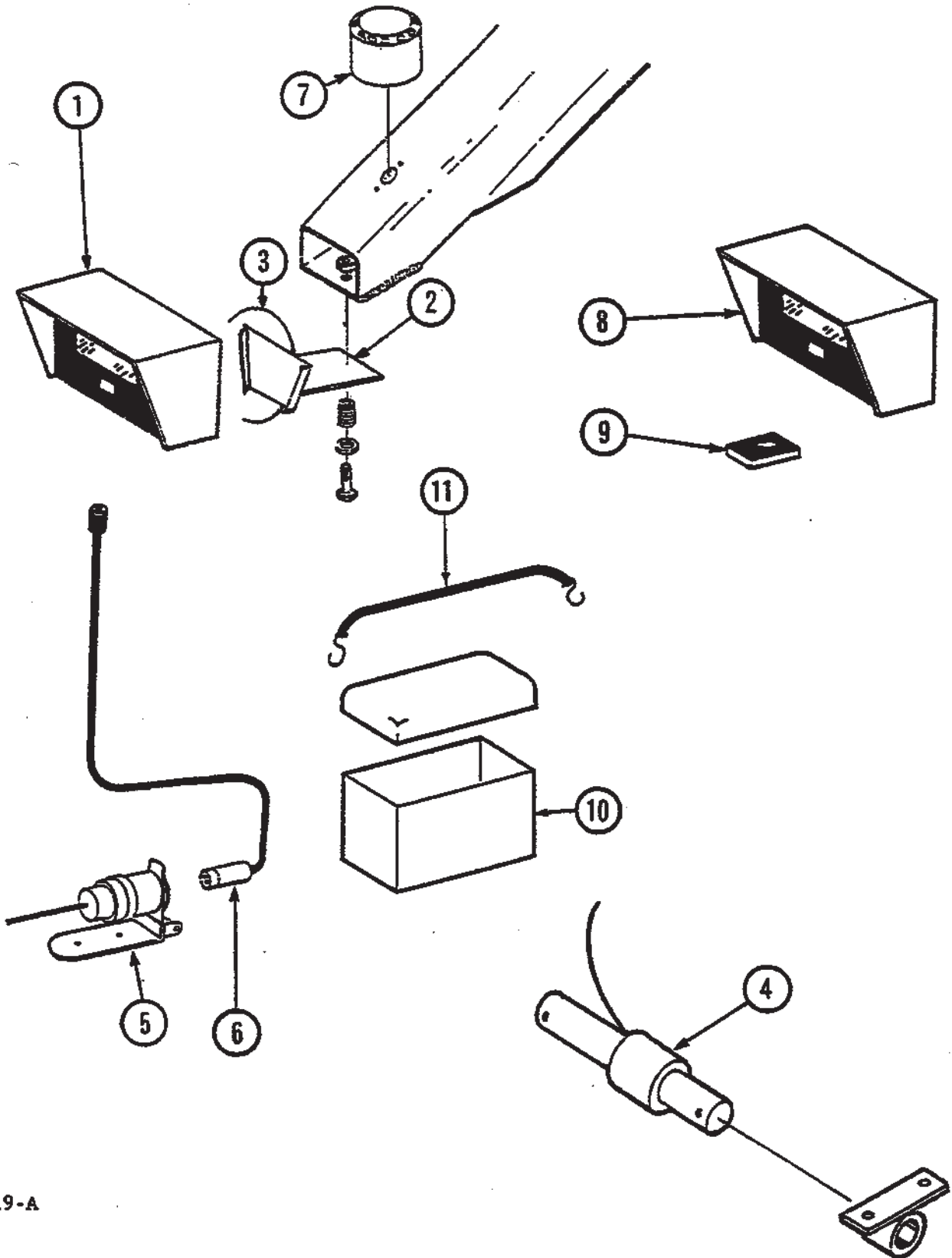
	172-386	1	Precision Calibrator For Scale Indicators
--	---------	---	---

A: The two-piece power cord (171-896 & 172-183) has been replaced as of 8-91. Order the 172-354 cord.

B: J-Star Model 5 indicator was replaced by Model EZ-150.

18-B

An asterisk (\*) at the end of a part number (XXX-XXX\*) indicates that the part is no longer used in production for this application. Superscript letters (XXX-XXX<sup>A</sup>) refer to footnotes and/or illustration boxes.



19-A

WEIGH-TRONIX SCALE PARTS

RA2250/2300-TOW DR051592

This scale system was offered with mixers sold between June, 1991 & Jan., 1992.

REF	PART NO	QTY	DESCRIPTION
1	172-277*	1	Indicator, Model 700E
2	101-906*	1	Indicator Mount Mtg Hrd: Spring (170-238) 3/8" x 2" Bolt, FW & LN
3	171-861*	1	Wire Tie, Indicator Mount
4	172-275*	4	Weigh Bar; 2-1/8" Dia, 30' Cord Length
	171-960*		Splice Kit - For Weigh Bar Cord Repair
5	170-415*	1	Plug; Tractor Mount
6	170-981*	1	Power Cord

## Optional Items:

7	101-918*	1	Alarm Horn Assembly Mtg Hrd: #6 x 3/4" Bolt, LW & Nut (2 ea)
8	172-279* <sup>B</sup>	1	Remote Display (Includes Cable & Mounting Bracket)
	172-351* <sup>A</sup>	1	Radio Control Package, Installed In Remote Display
9	172-350*	1	Transmitter; Radio Control
	172-349* <sup>AB</sup>	1	Radio Control Package, Installed In Indicator
9	172-350*	1	Transmitter; Radio Control
10	171-158*	1	Battery Box & Cover
11	171-936*	1	Battery Hold-Down Strap

A: The display must be sent to Knight Mfg. for radio control card installation.

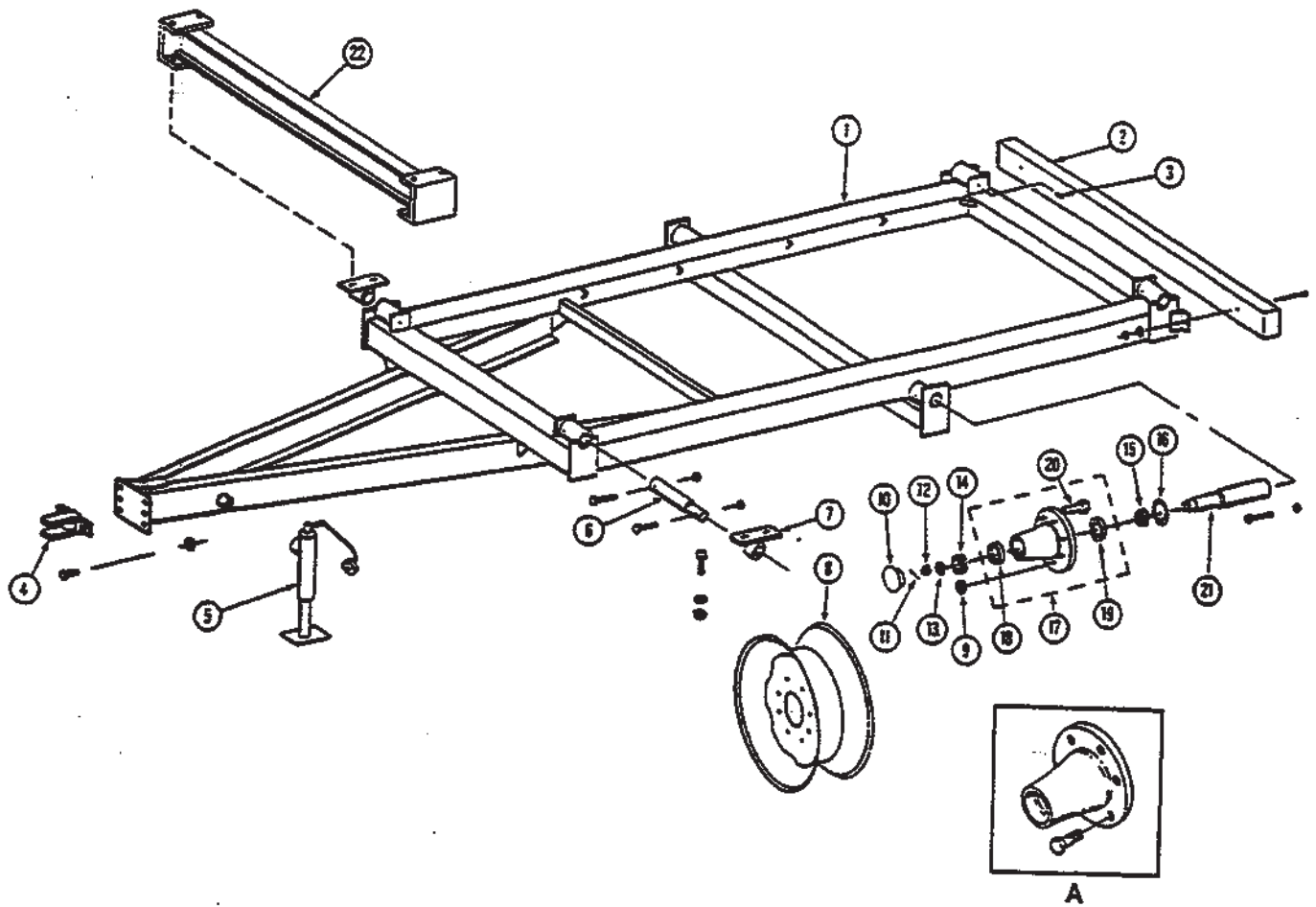
B: The remote display can't be used with the 172-349\* radio control package. To use the remote display and radio controller, the 172-351\* radio controller must be installed in the remote display.

19-B

An asterisk (\*) at the end of a part number (XXX-XXX\*) indicates that the part is no longer used in production for this application. Superscript letters (XXX-XXX<sup>A</sup>) refer to footnotes and/or illustration boxes.

**UNDERCARRIAGE ASSEMBLY**

RA2250/2300-TOW DR021392



KNIGHT MANUFACTURING CORP. PO BOX 167 BRODHEAD, WI 53520  
OFFICE: (608) 897-2131 PARTS/SERVICE: (608) 897-2125 FAX: (608) 897-2561

UNDERCARRIAGE ASSEMBLY

RA2250/2300-TOW DR121792

REF	PART NO	QTY	DESCRIPTION
1	101-740	1	Undercarriage Weldment For 2250
1	101-873	1	Undercarriage Weldment For 2300
2	133-973	1	Wood Bumper: 3" x 6" x 72" Mtg Hrd: 1/2" x 4" Tap Bolt, FW, LW & Nut (4 ea)
3	170-023	4	Zerk; 1/4"-28 NF
3	170-865*	4	Zerk; 1/8" NPT, Used Before 1-91
4	101-741	1	Tongue Clevis Assembly Mtg Hrd: 3/4" x 2" GRD 8 Bolt & GRD 8 LN (2 ea)
5	170-984	1	Jackstand Assy (See Separate Page For Parts)
6	133-976	4	Dummy Weigh Bar Mount (For Units Without Scales) Mtg Hrd To Spool: 3/8" x 2-1/2" Bolt & LN (1 ea) Mtg Hrd To Endstop: 3/8" x 3-1/2" Bolt & LN
7	101-742	4	Weigh Bar Mount Spool Mtg Hrd To Unit: 5/8" x 1-3/4" GRD 5 Bolt, FW & LN (2 ea)
8	170-112	2	Wheel; 20", 8-Bolt, Drop Center
8	172-284	2	Wheel; 22-1/2" x 8-1/4", 8-Hole
	171-800	2	8-Bolt Hub & Spindle Assy
	170-755	1	Complete 8-Bolt Hub Assy
9	171-827 <sup>A</sup>	8	Nut; 5/8" NF
10	170-550	1	Dust Cap
11	170-236	1	Cotter Pin; 5/32" x 1-1/2"
12	170-132	1	Castle Nut; 7/8" NF
13	170-131	1	Flat Washer; 7/8" Heavy
14	170-545	1	Bearing Cone: Timken 14137A Or Equip (Outer)
15	170-554	1	Bearing Cone: Timken 3780 Or Equip (Inner)
16	170-556	1	Grease Seal; C/R 25105 Or Equip
17	170-705 <sup>A</sup>	1	8-Bolt Hub Assy
18	170-546	1	Bearing Race; Timken 14276 Or Equip (Outer)
19	170-553	1	Bearing Race; Timken 3720 Or Equip (Inner)
20	171-826 <sup>A</sup>	8	Stud; 5/8" NF
21	171-745	1	Spindle; 2-1/2" x 14-1/8" Mtg Hrd: 3/8" x 4" Bolt & LN
22	101-909 <sup>B</sup>	2	Riser Mtg Hrd: 5/8" x 1-3/4" Bolt, & LN (8 ea)

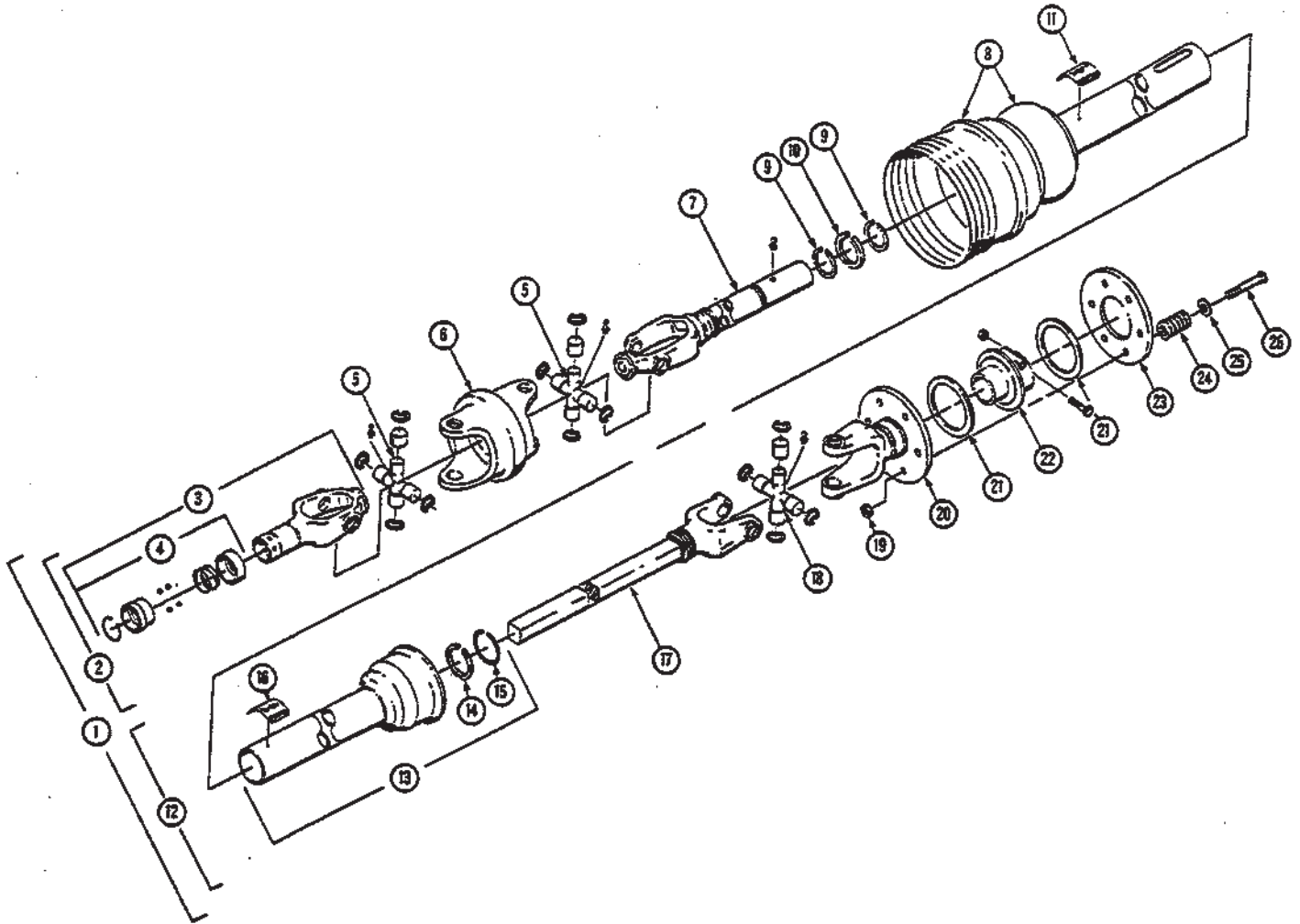
A: Before 1-88, hubs used bolts instead of studs and nuts. Order 170-557\* for the 9/16" x 1-1/8" bolts.

B: A CV-PTO Driveline must be used if risers are installed.

An asterisk (\*) at the end of a part number (XXX-XXX\*) indicates that the part is no longer used in production for this application. Superscript letters (XXX-XXX<sup>A</sup>) refer to footnotes and/or illustration boxes.

CV PTO DRIVELINE & FRICTION CLUTCH PARTS

RA2250/2300-TOW R092893



22-A

KNIGHT MANUFACTURING CORP. PO BOX 167 BRODHEAD, WI 53520  
OFFICE: (608) 897-2131 PARTS/SERVICE: (608) 897-2125 FAX: (608) 897-2561

## Weasler Constant Velocity PTO

REF	PART NO	QTY	DESCRIPTION
1	172-295	1	PTO Driveline Assy Mtg Hrd: 1/2" x 3" Bolt & LN
2	172-296 <sup>A</sup>	1	CV Joint & Tube Half
3	172-305	1	Yoke Assy
4	172-019	1	Spring-Lok Repair Kit
5	172-302	2	Cross & Bearing Kit
6	172-303	6	CV Center
7	172-300	1	Yoke Tube & Slip Sleeve
8	172-298	1	Inner Guard
	172-304	1	Bell Extension
9	170-219	2	Bearing Retainer
10	170-220	1	Nylon Bearing
11	171-550	1	Safety Decal
12	172-297	1	Friction Clutch & Shaft Half
13	172-299	1	Outer Guard
14	170-220	1	Nylon Bearing
15	170-219	1	Bearing Retainer
16	171-550	1	Safety Decal
17	172-301	1	Yoke & Shaft
18	170-720	1	Cross & Bearing Kit
19	170-047	6	Stop Nut; 3/8"
20	171-757	1	Clutch Yoke
21	171-760	2	Friction Disk
22	171-758	1	Drive Hub
23	171-759	1	Pressure Plate
24	171-761	6	Spring
25	171-762	6	Centering Washer
26	171-813	6	Bolt; 3/8" x 4-1/4"

22-B

A: The complete driveline must be replaced when converting from a non-CV to a CV PTO driveline. The tube and shaft members have been reversed on the CV PTO ass'y to eliminate the possibility of an over length

An asterisk (\*) at the end of a part number (XXX-XXX\*) indicates that the part is no longer used in production for this application. Superscript letters (XXX-XXX<sup>A</sup>) refer to footnotes and/or illustration boxes.

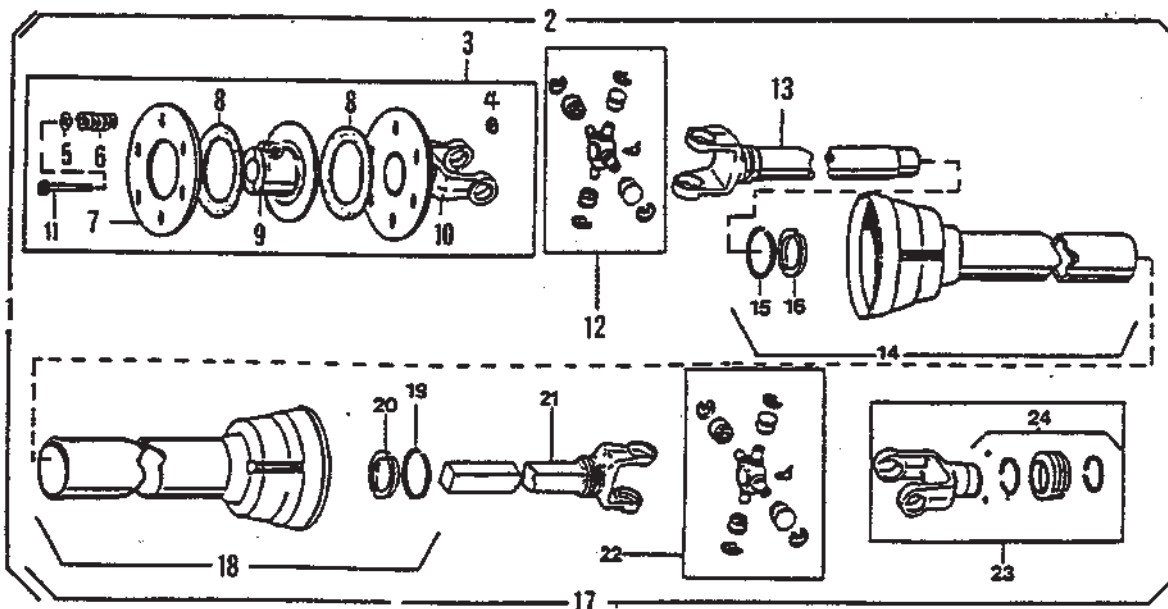
PTO DRIVELINE AND FRICTION CLUTCH PARTS

RA2250/2300-TOW DR021392

This driveline was sold with mixers before February, 1992.

REF	PART NO	QTY	DESCRIPTION
1	171-750*	1	14R 9000 Friction Clutch PTO Driveline Mtg Hrd: 1/2" x 3" Bolt & LN
2	171-752*	1	Joint & Friction Half (Male Half)
4	170-047*	6	Stopnut
5	171-762*	6	Washer
6	171-761*	6	Spring
7	171-759*	1	Pressure Plate
8	171-760*	2	Friction Disc
9	171-758*	1	Drive Hub
10	171-757*	1	Clutch Yoke W/Plate
11	171-813*	6	Bolt; 3/8" x 4-1/4"
12	170-720*	1	Repair Kit
13	171-754*	1	Yoke & Tube
14	171-755*	1	Male Shield Assy
15	170-219*	1	Bearing Retainer
16	170-220*	1	Nylon Bearing
17	171-751*	1	Joint & Shaft Half (Female Half)
18	171-756*	1	Female Shield Assy
19	170-219*	1	Bearing Retainer
20	170-220*	1	Nylon Bearing
21	171-753*	1	Yoke & Shaft Assy
22	170-720*	1	Repair Kit
23	172-018*	1	Lock Yoke Assembly
24	172-019* <sup>A</sup>	1	Spring Lock Repair Kit

A: The manual slide lock repair kit (171-529) is obsolete. Order the 172-018 lock yoke assembly.

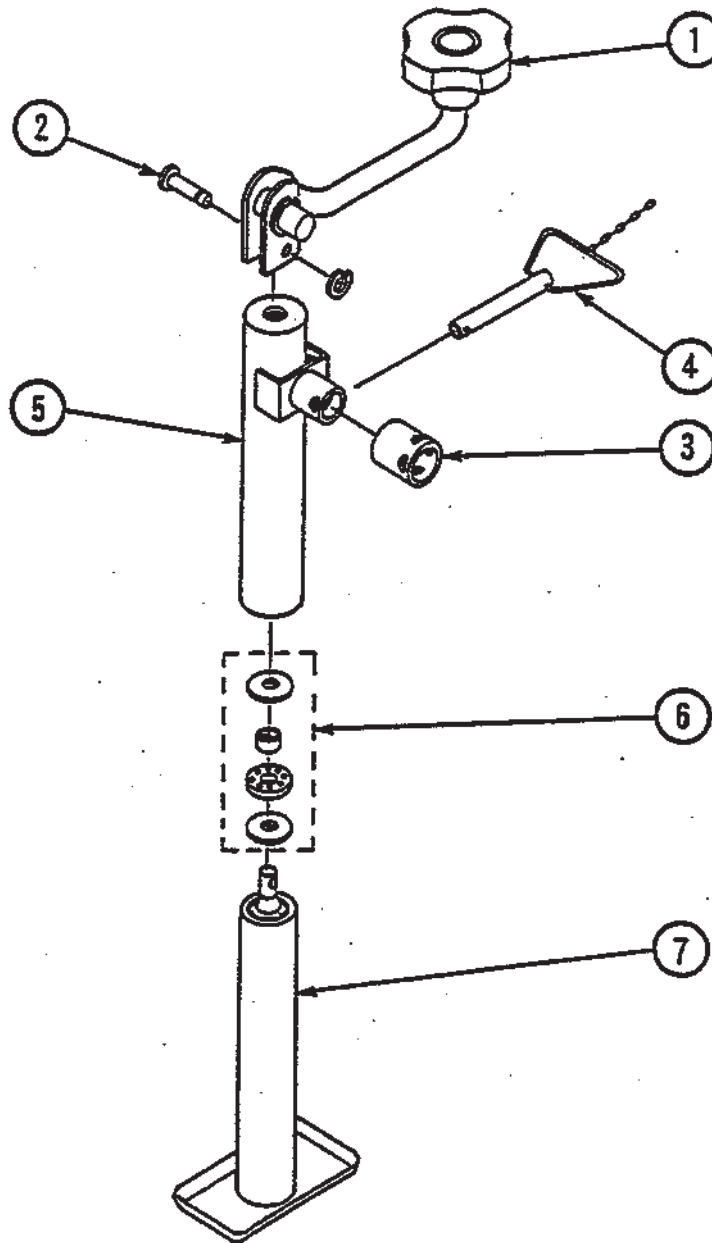


22-C

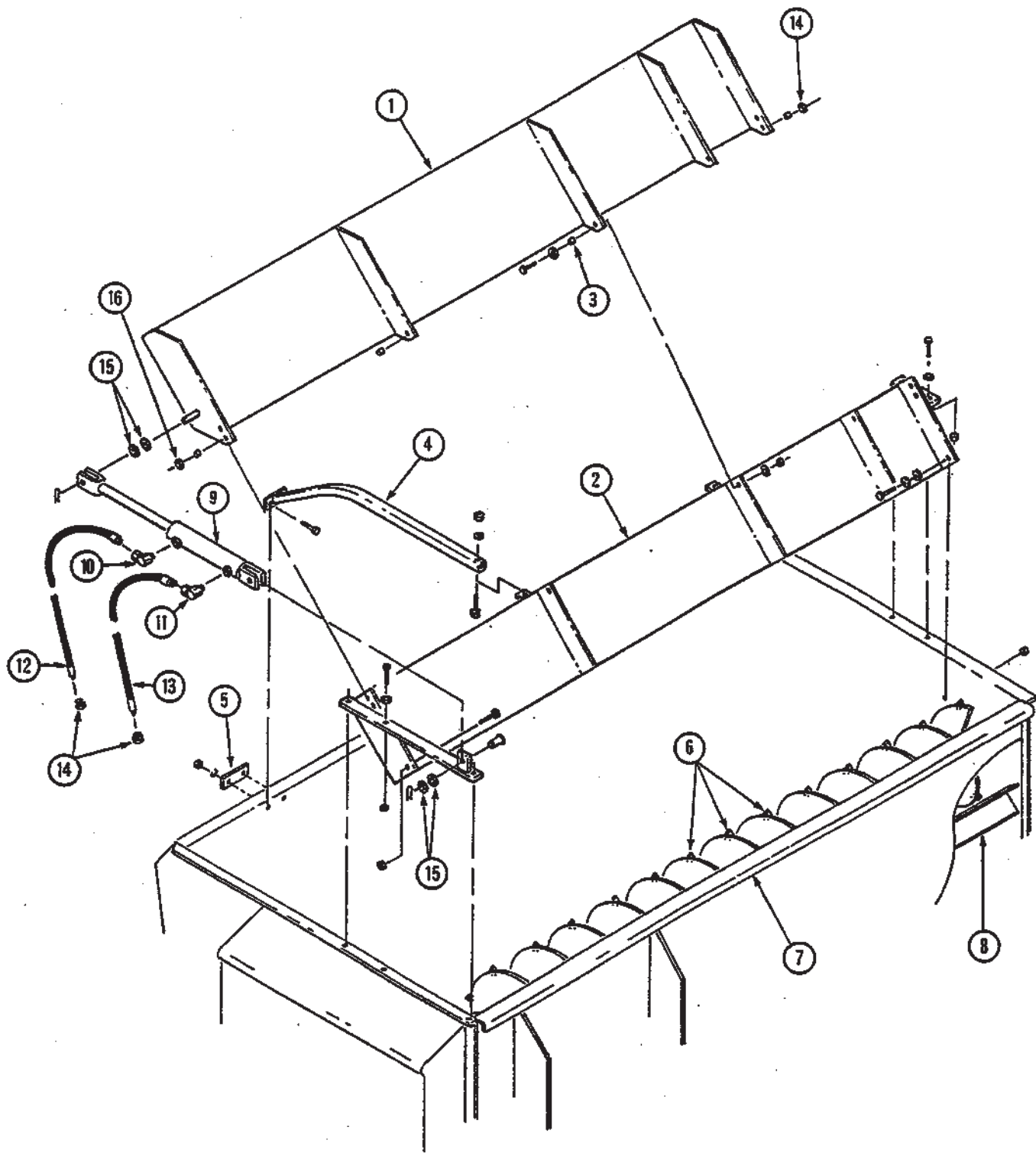
**JACKSTAND**

RA2250/2300-TOW R081790

REF	PART NO	QTY	DESCRIPTION
	170-984	1	Jackstand Assy
1	170-386	1	Crank Assy
2	171-860	1	Crank Pin (Includes "C" Washer)
3	170-985	1	Mount Tube
4	170-987	1	Pin And Chain Assy
5	170-986	1	Outer Tube
6	170-397	1	Thrust Bearing Kit
7	171-941	1	Inner Tube Assembly (Includes Nut & Screw)



A \* following a part number (XXX-XXX\*) indicates that the part is no longer used in production for this application. Superscript letters (XXX-XXX<sup>A</sup>) refer to footnotes and/or illustration boxes.



KNIGHT MANUFACTURING CORP. PO BOX 167 BRODHEAD, WI 53520  
OFFICE: (608) 897-2131 PARTS/SERVICE: (608) 897-2125 FAX: (608) 897-2561  
24

HAY-MAX KIT PARTS

2250/2300 TOW DR060493

REF	PART NO	QTY	DESCRIPTION
	300-034 <sup>A</sup>	1	Hay-Max Retro Fit Kit (2250)
	300-035 <sup>A</sup>	1	Hay-Max Retro Fit Kit (2300)
1	102-016	1	2250 Upper Attachment
	102-018	1	2300 Upper Attachment
			Mtg Hrd: 1/2" x 1-1/2" Bolt, LN (4), 1/2" FW (8)
2	102-017	1	2250 Lower Attachment
	102-019	1	2300 Lower Attachment Mtg Hrd: 1/2 " x 1-1/4" Bolt, LW, Nut (6); 1/2" x 1-1/2" Bolt, LW, Nut (1)
3	134-771	4	Pivot Bushing
4	102-020	2	Bucket Guard Mtg Hrd: 1/2" x 3" Bolt, LW, Nut (1), 3/8" x 1-1/4" Bolt, LW, Nut (2)
5	134-012	2	Bucket Guard Mount
6	133-835	23	2250 Auger Knife
			Mtg Hrd: 1/4" x 3/4" Bolt, LW & Nut (2 ea. Knife)
		47	2300 Auger Knife
			Mtg Hrd: 1/4" x 3/4" Bolt, LW & Nut (2 ea. Knife)
7	134-693	2	U-Channel (2250)
	134-694	2	U-Channel (2300)
8	134-734	2	Shear Angle (2250)
	134-753	1	Shear Angle (2300)
9	172-441	1	Hydraulic Cylinder; 2" Dia. x 10" Stroke, Seal Kit Order 172-446
10	171-030	1	90° Swivel Adapter; 3/8"
11	171-723	1	90° Swivel Restrictor; 3/8"
12	170-468	1	Hydraulic Hose; 1/4" x 162"
13	170-471	1	Hydraulic Hose; 1/4" x 170"
14	170-235	2	Reducer Fitting; 1/2" To 3/8"
15	170-122	A/R	Spacer Washer; 1" SAE Flat
16	172-445	2	1/2" Flat Washer
	172-442	1	Electric Switching Valve (Optional) Mounted On Tractor

A: Hay-Max Retro Fit Kit for 2000 series mixers will require upper auger assy to be reflighted or replaced. Auger parts are not included as part of Hay-Max Kit and must be ordered separately as required by customer. See Reel and Auger section for auger parts.

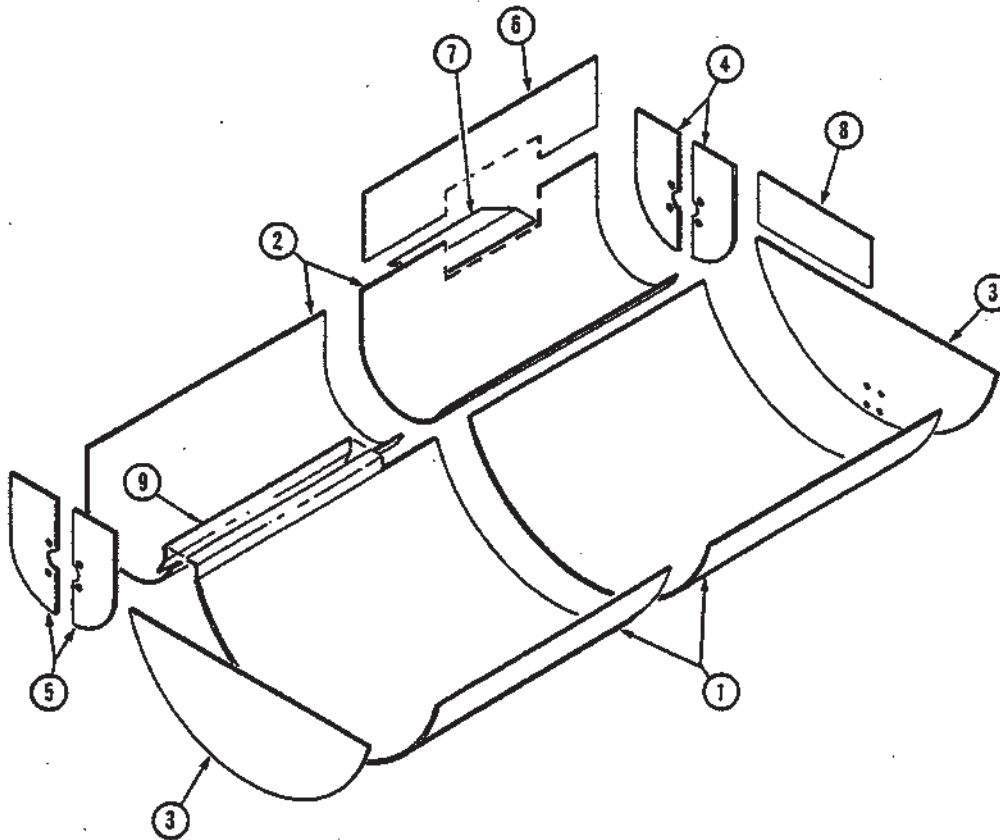
Hydraulically powered Hay-Max Kit is optional and is not included in Retro-fit kit Hydraulic option is ordered separately.

KNIGHT MANUFACTURING CORP. PO BOX 167 BRODHEAD, WI 53520  
OFFICE: (608)897-2131 PARTS/SERVICE: (608)897-2125 FAX: (608)897-2561 25

**REPAIR LINER PARTS**

RA2250/2300-TOW DR020593

REF	PART NO	QTY	DESCRIPTION
1	134-701	2	Reel Liner (2250 only)
	134-711	2	Reel Liner (2300 only)
2	134-702	2	Auger Liner (2250 only)
	134-712	2	Auger Liner (2300 only)
3	134-703	2	Reel End Liner
4	134-708	1	Auger End Liner (Front) Part number includes both left and right halves.
5	134-707	1	Auger End Liner (Rear) Part number includes both left and right halves.
6	134-704	1	Upper Door Liner
7	134-716 <sup>A</sup>	1	Door Opening Liner
8	134-705	1	Upper Reel Liner
9	102-003	2	Shear Bar (2250)
9	102-004	2	Shear Bar (2300)
	00518	A/R	Repair Liner Installation Instructions



A: Door opening liner will have to be trimmed on units between serial numbers 055 to 202 (2250 only).

KNIGHT MANUFACTURING CORP. PO BOX 167 BROADHEAD, WI 53520  
OFFICE: (608) 897-2131 PARTS/SERVICE: (608) 897-2125 FAX: (608) 897-2561

## DECAL AND PAINT LIST

RA2250/2300-TOW DR

The following decals are listed below for your convenience.  
Use the operator's manual for decal location, part number and ordering.

Unit Decals:

PART NO	QTY	DESCRIPTION
171-933	1	Complete Set Of Decals For 2250
172-168	1	Complete Set Of Decals For 2300
170-154	2	"KNIGHT"
170-155	2	Knight Head
170-849	2	WARNING - Beware Of Power Driven . . .
171-712	1	NOTICE - Retighten Set Screws . . .
171-820	4	DANGER - Rotating Auger Inside . . .
171-905	2	"REEL AUGGIE"
171-906	2	"2250" For 2250 Only
172-164	2	"2300" For 2300 Only
171-911	1	NOTICE - Operating Precautions
172-308	1	CAUTION - CV-PTO Operating Length. . .
171-913	1	WARNING - Do Not Operate . . .
171-915	1	DANGER - Shield Missing . . .
171-916	2	DANGER - Beware Of Rotating Driveshaft . . .
171-947	4	DANGER - Do Not Hand Load . . .
171-948	1	BEWARE - If Mixer . . .
170-490	1	IMPORTANT - Reduce Engine Speed . . .
171-949	1	"U.S. Patent No. . . ."
172-370	1	Friction Clutch Adjustment
171-748	1	Door Gauge
170-893	1	SMV Symbol
171-992	2	Decal; Red Reflector
172-292	1	Full Line
171-912*	1	Caution - Non CV-PTO Operating Length. . .

Power Chute And Slide Tray Decals:

171-914	2	WARNING - Stay Clear Of Chute . . .
171-991	1	Decal; Amber Reflector
171-992	1	Decal; Red Reflector

PTO Driveline Decals:

171-550	1	DANGER, PTO . . .
171-599	1	Do Not Exceed . . .
171-799	1	DANGER - Shield Missing

Paint:

170-366	Knight Yellow Aerosol Can
170-812	Knight Yellow Quart Can
170-813	Knight Yellow Gallon Can
170-367	Knight Red Aerosol Can
170-814	Knight Red Quart Can
170-815	Knight Red Gallon Can

OPTIONAL KITS

RA2250/2300-TOW DR

**Safety Chain For Towed Equipment P/N 172-195**

This chain is designed to retain the connection between the towing and towed machines in the event of separation of the primary attaching system. It should be used whenever the unit is transported on the highway.

**Light Kit For Towed Equipment**

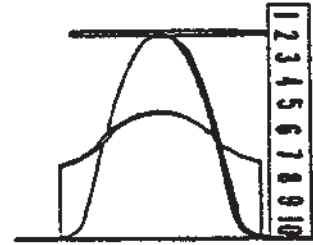
This light kit is designed for lighting and marking of agricultural field equipment whenever the equipment is on a highway. This kit is pre-assembled, and it includes mounting hardware.

PART NO	QTY	DESCRIPTION
300-007	1	Complete Light Kit - Assembled
172-173	2	Red And Amber Light Assembly
172-174	25'	4 Conductor Wire
172-175	1	4 Pin In-Line Connector (Male & Female)
Options:		
172-110	1	7 Pin Female Connector

**FLIGHTING TERMS AND DIMENSIONS**

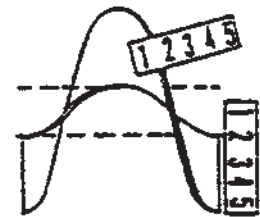
RA2250/2300-TOW DR

**OUTSIDE DIAMETER:** Outside diameter can be determined by laying the flight on a flat surface and measuring from the top to the base.  
**NOTE:** Dimensions may vary slightly.

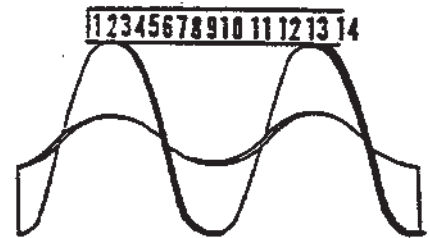


**THICKNESS:** Thickness of flighting can be determined with any linear measuring instrument.

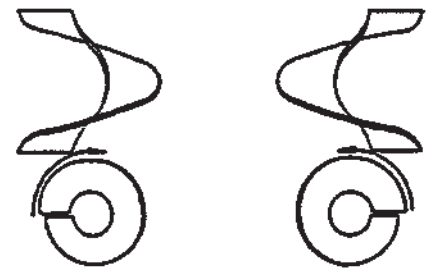
**INSIDE DIAMETER:** To find the inside diameter of flight, measure the distance from the inside of the flight to the peak. Then multiply the dimension by two and subtract the answer from the outside diameter dimension.



**PITCH:** Pitch is the dimension from one peak to the next, measured along the axis of the shaft. The term full pitch means that the outside diameter and the pitch are the same.



**RIGHT HAND AND LEFT HAND FLIGHTING:** As you look at the face of flighting and it is slanting downward to the right; it is right hand and if it is slanting downward to the left; it is left hand.



Flighting dimensions are written in a series similar to the following:

1/4" - 4" - 14" - 14"  
Thick - I.D. - O.D. - Pitch

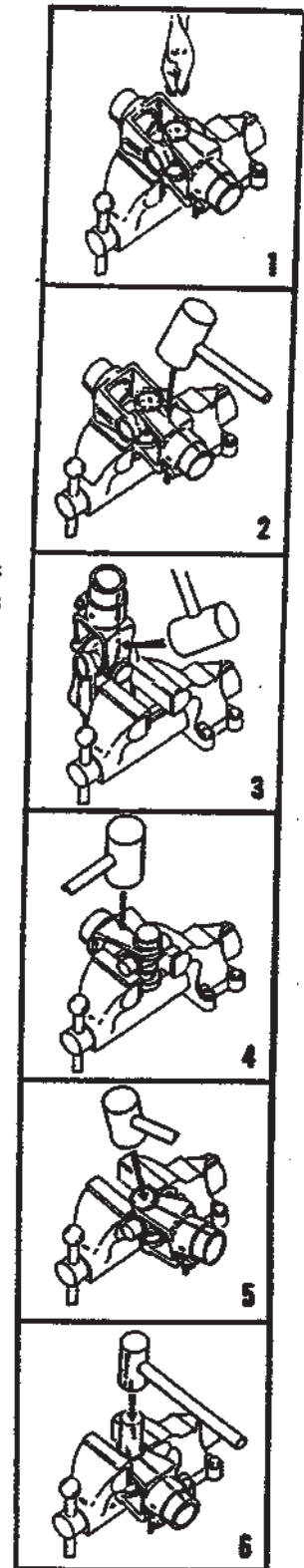
**DISASSEMBLY PROCEDURE:**

1. Remove the four snap rings as shown in Figure #1.
2. Position the joint in an open vise, with each ear of one yoke supported by a vise jaw. Figure #2
3. With a soft hammer or mallet, strike the top ear of the unsupported yoke as indicated by the arrow in Figure #2. This will drive the top bushing outward approximately 3/8 of an inch.
4. Grip the loosened bushing in the vise as shown in Fig. #3. Drive the yoke off the bushing by striking the yoke ear with a mallet in the direction of the arrow. (Fig. #3)
5. This same procedure should be followed to remove the bushing that is directly opposite the one in Step 4. After this, the yoke itself may be removed.
6. To remove the remaining two bushings, support the cross as shown in Figure #4. Make certain that the vise jaws are covered with brass protectors. By striking the yoke ear as indicated by the arrow in Figure #4, the remaining bushings can be removed by repeating the procedure called for in Step 4 & Figure #3.

**ASSEMBLY PROCEDURE:**

**DURING REASSEMBLY, BE SURE THAT THERE IS NO DIRT ON THE TRUNNIONS OF THE CROSS OR IN THE BUSHINGS!**

1. Start one bushing in the yoke ear and position the center cross through the yoke. Drive the first bushing down flush with the outside surface of the ear as shown in Fig. #5. Support the underside of the ear so as not to spring the yoke.
2. Clamp the ear in the vise as shown in Figure #6. Use a punch of the same diameter as the bushing, drive the bushing past the snap ring groove, and insert a snap ring.
3. Position the cross and drive in the opposite bushing as described in Steps 1 & 2, and Insert a snap ring.
4. Assemble the second yoke in the same manner.
5. To insure proper seating, and to eliminate any possible tightness, strike the forged surfaces of the yoke ears with a mallet. This will insure a free flexing joint.
6. Lubricate with a good grade of multipurpose grease.



**HARDWARE PART NUMBER LISTING**

RA2250/2300-TOW DR

All hex head bolts up to and including 7/16" dia are grade 5 unless otherwise specified. All fasteners are NC thread unless otherwise specified.

<u>Size</u>	<u>Hex Nuts</u>	<u>Locknuts</u>	<u>Jam Nuts</u>	<u>Flt Wsh.</u>	<u>Lk Wsh.</u>
#10	171-606			171-525	171-605
1/4	170-125	170-069		170-301	170-124
5/16	170-119	170-028		170-127	170-118
3/8	170-007	170-047	170-022	170-244	170-006
7/16	170-062	170-239	170-046	170-138	170-061
1/2	170-004	170-042	170-036	170-040	170-003
5/8	170-011	170-031	170-037	170-066	170-010
3/4	170-017	170-185	170-035	170-015	170-016
7/8				170-131	172-003
1				170-122	171-021

**HEX HEAD BOLTS**

<u>Bolt Size</u>	<u>Part No</u>	<u>Bolt Size</u>	<u>Part No</u>	<u>Bolt Size</u>	<u>Part No</u>
1/4 x 3/4	170-803	3/8 x 3	170-380	5/8 x 1-3/4	170-030
1/4 x 7/8	171-094	3/8 x 3-1/2	170-292	(Tap Bolt - Grade 5)	
1/4 x 1	170-310	3/8 x 4	170-877	5/8 x 2	170-009
1/4 x 1-1/2	170-068	3/8 x 4-1/2	170-519	(Grade 5)	
1/4 x 2-3/4	171-203	3/8 x 5	170-493	5/8 x 2	171-772
1/4 x 3	171-403	3/8 x 5-1/2	170-593	(Tap Bolt)	
5/16 x 5/8	170-532	3/8 x 6-1/2	171-291	5/8 x 2-1/2	170-129
5/16 x 3/4	170-262	7/16 x 3/4	170-265	(Tap Bolt)	
5/16 x 7/8	170-256	7/16 x 1	170-032	5/8 x 3	170-258
5/16 x 1	170-027	7/16 x 1-1/4	170-354	5/8 x 3-1/2	170-038
5/16 x 1-1/4	170-188	7/16 x 1-1/2	170-059	5/8 x 4	170-371
5/16 x 1-1/2	170-372	7/16 x 2	170-356	5/8 x 4-1/2	170-067
5/16 x 1-3/4	170-263	7/16 x 2-1/2	170-379	5/8 x 5	170-065
5/16 x 2	170-376	7/16 x 3	170-270	5/8 x 6	170-381
5/16 x 2-1/2	170-369	7/16 x 5-1/2	170-377	5/8 x 9-1/2	171-039
5/16 x 3	170-295	7/16 x 6	170-378	3/4 x 2	170-058
5/16 x 3-1/4	171-639	1/2 x 3/4	171-252	3/4 x 2-1/4	171-275
5/16 x 4	170-293	1/2 x 1	170-149	3/4 x 2-1/2	170-374
(Tap Bolt)		1/2 x 1-1/4	170-373	3/4 x 3	170-014
5/16 x 4-1/2	170-294	1/2 x 1-1/2	170-002	3/4 x 3-1/2	170-195
3/8 x 3/4	170-439	1/2 x 2	170-050	3/4 x 4	170-419
3/8 x 7/8	170-268	1/2 x 2-1/2	170-319	3/4 x 4-1/2	170-846
3/8 x 1	170-054	1/2 x 3	170-168	(Grade 5)	
3/8 x 1-1/4	170-005	1/2 x 4	171-509	3/4 x 6	171-116
3/8 x 1-1/2	170-368	1/2 x 4-1/2	171-573	(Grade 5)	
3/8 x 2	170-245	1/2 x 5	171-412		
3/8 x 2-1/4	170-320	5/8 x 1 (G.5)	171-087		
3/8 x 2-1/2	170-257	5/8 x 1-1/4	171-366		

**HARDWARE LISTING CONTINUED**

RA2250/2300-TOW DR

**TRUSS HEAD BOLTS**

<u>Bolt Size</u>	<u>Part No</u>
#8 x 1-1/2	171-210
#10 x 3/4	171-604
1/4 x 1/2	170-123
1/4 x 3/4	170-193
1/4 x 1	170-194
5/16 x 1 (Grade 5)	170-117

**CARRIAGE BOLTS**

<u>Bolt Size</u>	<u>Part No</u>
1/4 x 1-1/2	170-355
1/4 x 2-1/2	171-394
1/4 x 3	170-509
5/16 x 1	170-370
5/16 x 2-1/2	171-395
5/16 x 5-1/2	170-494
3/8 x 3-1/2	171-283
3/8 x 4-1/2	170-191
3/8 x 5	170-495
3/8 x 6-1/2	171-174
3/8 x 8	170-297
1/2 x 6-1/2	171-098
1/2 x 9	171-255

**ZERKS**

<u>Size</u>	<u>Part No</u>
1/4-28	170-023
1/4-28 - 45	170-148
1/4-28 - 90	170-049
1/4 NPT	170-277
1/8 NPT	170-865
1/8 NPT-45	170-864
1/8 NPT-65	170-215
1/8 NPT-90	170-866

**COTTER PINS**

<u>Size</u>	<u>Part No</u>
1/16 x 1/2	170-992
3/32 x 3/4	170-364
1/8 x 3/4	170-177
1/8 x 1	170-045
1/8 x 1-1/4	170-033
1/8 x 1-1/2	170-382
5/32 x 1	170-421
5/32 x 1-1/2	170-236
5/32 x 3	170-135
3/16 x 1-1/4	170-991
3/16 x 2	170-115
1/4 x 1-1/2	170-521
1/4 x 2	170-056

**SET SCREWS**

<u>Size</u>	<u>Part No</u>
1/4 x 1/4 NC	170-247
5/16 x 5/16NC	170-248
5/16 x 1/2 NC	170-254
5/16 x 1/4 NF	170-993
5/16 x 5/16NF	170-825
5/16 x 5/8 NF	170-456
3/8 x 1/4 NC	170-856
3/8 x 3/8 NC	170-151
3/8 x 1/2 NC	170-857
(nylock)	
3/8 x 3/4 NC	170-289
(sq head)	
3/8 x 3/4 NC	170-290
(sq hd drilled)	
3/8 x 1 NC	170-021
3/8 x 1/2 NF	171-469
7/16 x 7/16NC	170-288
7/16 x 1 NC	170-147
(sq head)	
1/2 x 5/8 NC	170-249
1/2 x 1 NC	170-438
1/2 x 1-1/4NC	171-085
(half dog point)	
5/8 x 5/8 NC	170-250

**ROLLER CHAIN CONNECTOR LINKS**

<u>Size</u>	<u>Part No</u>
#50-2R	170-094
#50	170-088
#60-2R	170-095
#60	170-089
#60H	171-102
#80	170-090
#80H	170-821
#100	170-091
#100H	171-969
#120	170-092
#140	170-093
#160	170-888

**OFFSET LINKS**

<u>Size</u>	<u>Part No</u>
#50	170-096
#60-2R	170-103
#60	170-097
#80	170-098
#80H	170-820
#100	170-099
#120	170-100
#140	170-101
#160	170-887

**ROLLER LINKS**

<u>Size</u>	<u>Part No</u>
#50	171-415
#60	171-416
#80	171-417
#80H	170-795
#120	171-419
#140	171-420

KNIGHT MANUFACTURING CORP. PO BOX 167 BRODHEAD, WI 53520  
 OFFICE: (608) 897-2131 PARTS/SERVICE: (608) 897-2125 FAX: (608) 897-2561