



KNIGHT

TRAILER PARTS MANUAL REEL AUGGIE MIXER MODELS 3010,3015

TABLE OF CONTENTS

Abbreviations	2
Using This Listing	3
Front End Parts	4-5
Reel, Auger and Bucket Guard Parts	6-7
Door Parts	8
Slide Tray	9-10
Jackstand	11
Undercarriage	12-13
Scale Parts	14-15
Scale Connector Repair Parts	15
Selector Valve	16
PTO Driveline	17
Repair Liner	18
HAY MAXX SYSTEM	19
Decal List	20
Paint List	20
Hardware Listing	21-22
Part Number Index	23-24

Catalog Part Number 005799

Unit Serial Number _____

Operator Instruction Manual for this unit: 005798

ABBREVIATIONS

Assy	Assembly
A/R	As Required
B	Bolt
Brg	Bearing
BSN	Before Serial Number
Btm	Bottom
C-Bolt	Carriage Bolt
Ctr	Cotter
CV	Constant Velocity
Deg	Degree
Dia	Diameter
ea	Each
eq or Equiv	Equivalent
Fln	Flanged Lock Nut
Fw	Flat Washer
Ga	Gauge
Gr or Grd	Grade
Hd	Head
Hfw	Heavy Flat Washer
Hyd	Hydraulic
ID	Inside Diameter
Ill or Illus	Illustration
Ind	Indicator
Jn	Jam Nut
Kw	Keyway
LH	Left Hand
Ln	Lock Nut
Lw	Lock Washer
Mtg Hrd	Mounting Hardware
NC	National Coarse
NF	National Fine
NLA	No Longer Available
NPT	National Pipe Thread
OD	Outside Diameter
Pc(s)	Piece(s)
PD	Pitch Diameter
PTO	Power Takeoff (shaft)
Qty	Quantity
RH	Right Hand
SN	Serial Number
SHCS	Socket Head Cap Screw
Spk, or Spkt or Sprkt	Sprocket
Sq	Square
SS	Stainless Steel
SSB	Stainless Steel Bolt
St	Straight
Std	Standard
STS	Self Tapping Screw
UASN	Used After Serial Number
UBSN	Used Before Serial Number
W	With
W/O	With Out

USING THIS SERVICE PARTS LISTING

This listing uses a number indentation system to specify the parts of an assembly. Any number which is indented to the right, indicates that it is a component of the item to the upper left. Example:

<u>Part no</u>	<u>Qty</u>	<u>Description</u>
102-AAA	#	Assembly A
102-BBB	#	Sub-Assembly B
(Component of A)		
140-xxx	#	Sub-Component of B
140-xxx	#	Sub-Component of B
102-CCC	#	Sub-Assembly C
(Component of A)		
etc.		

Using this system, the subassemblies and their components are included if an **Assembly** is ordered. Similarly, the components of a subassemblies are included if a subassembly is ordered.

The quantity (Qty) associated with an assembly, represents the number of times an assembly could be shown in the drawing. The subassembly quantity however, is the number of times a subassembly is used to build one assembly. Similarly, the component quantity refers to the number of times a given component is found in one subassembly.

MODEL AND SERIAL NUMBER INFORMATION is located near the front left hand corner (Fig. A). The model number, serial number and part number should be known when asking service personnel for parts.

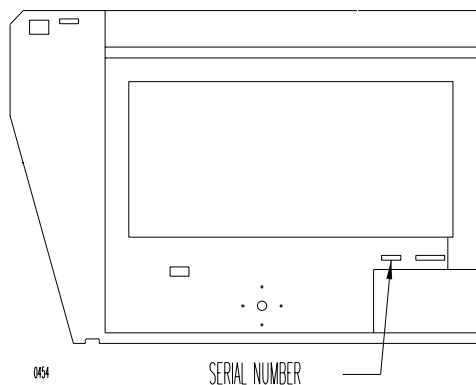


Figure A

The serial number may consist of a number, or a number with a letter prefix. When referring to serial number breaks in the text of this manual, a serial number with a prefix will have been manufactured after a serial number without a prefix (A001 made after 0123). Likewise, a higher prefix letter would indicate manufacture after a lower prefix letter (B001 made after A123). Therefore, if the text refers to units manufactured after serial number B123, this would include "B" series numbers greater than 123, and all numbers with a higher letter prefix.

If you cannot find the part you need, be as descriptive as possible when placing an order:

Sprockets: give the bore size, number of teeth, and size of keyway.

Roller chain: give the size of chain (stamped on the side of each link) and number of links.

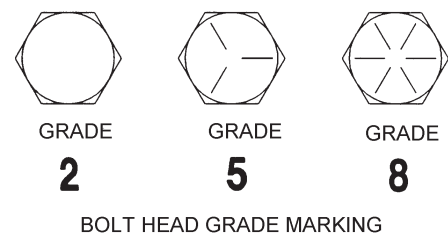
Shafting: give the diameter, length, and quantity and size of keyways.

Hardware is generally not included with parts. If you need any hardware, check the size, the length, and the grade (Fig. B), then check the hardware list in this manual for the part numbers.

All hex head bolts are grade 5, and nuts are grade 5 unless otherwise stated.

The hardware listing also includes zerks, cotter pins, set screws, and roller chain links.

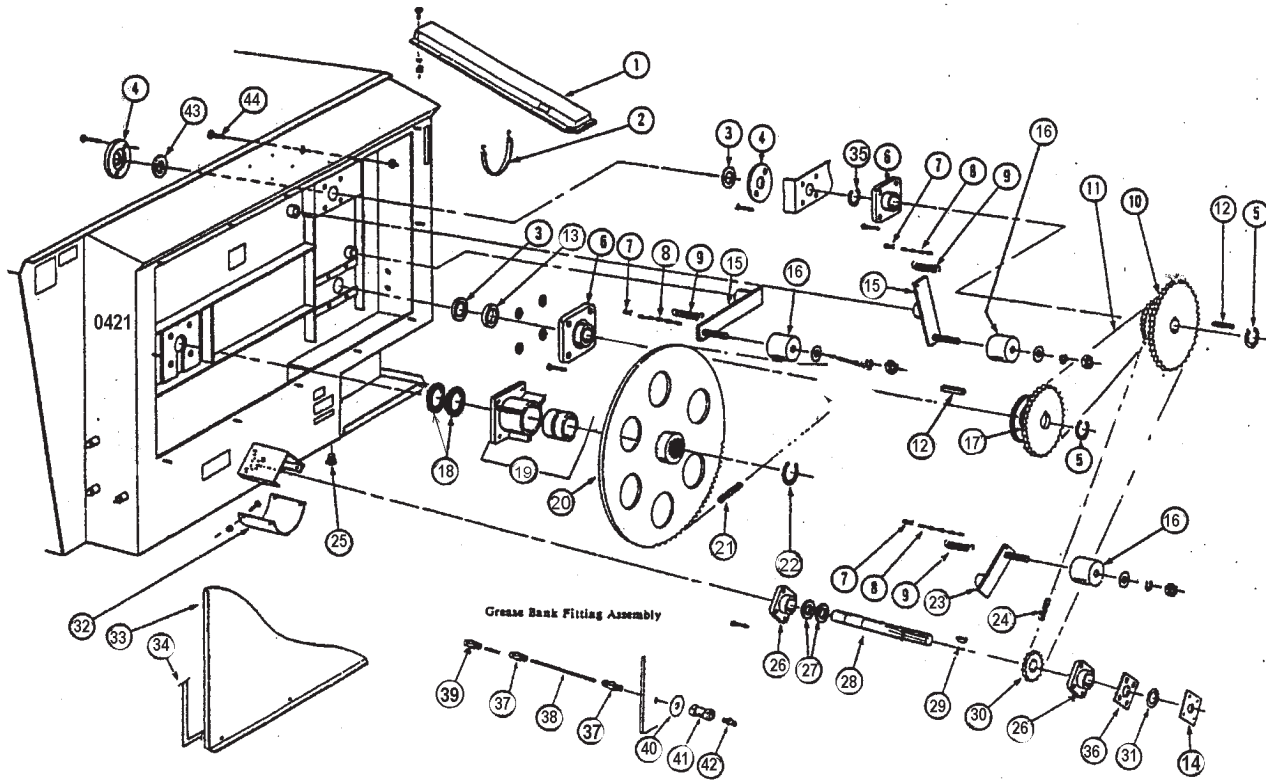
The illustrations in this manual are meant to be used only as a guide for identifying parts and locating their relative positions.



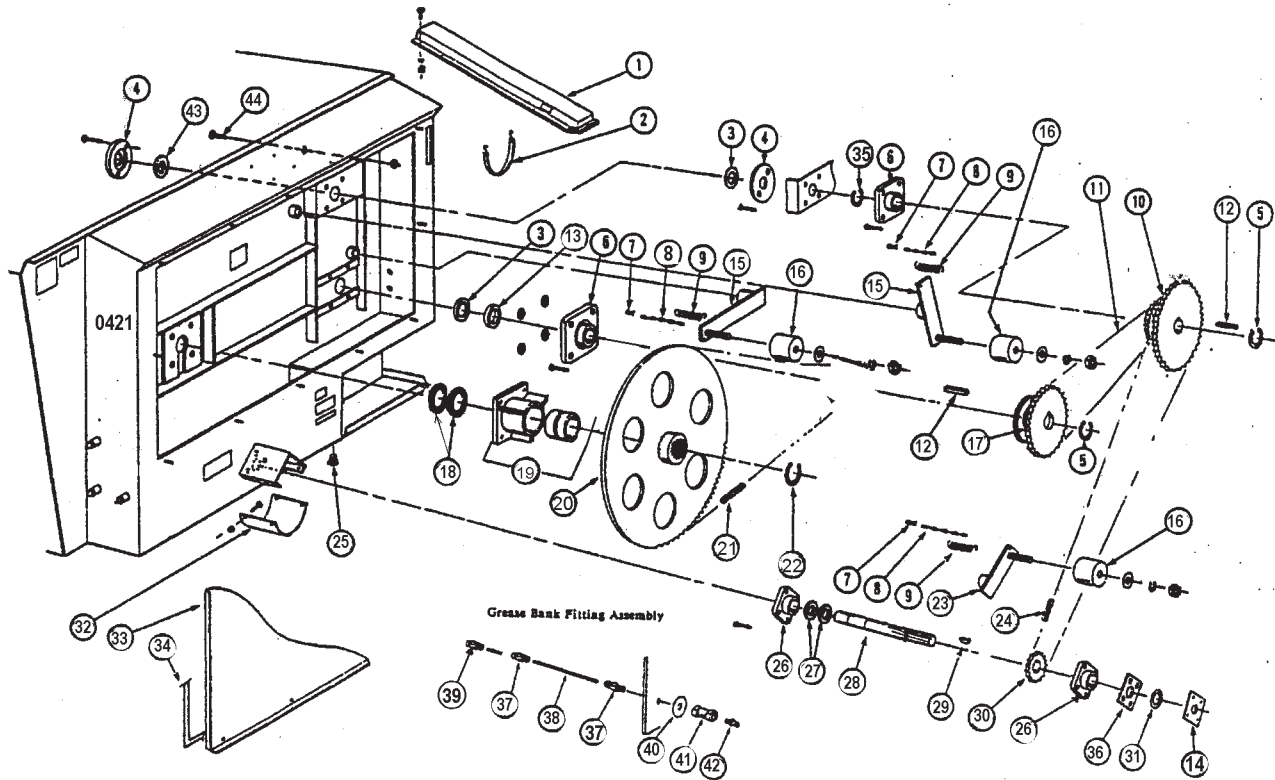
0072

Fig. B

FRONT END PARTS

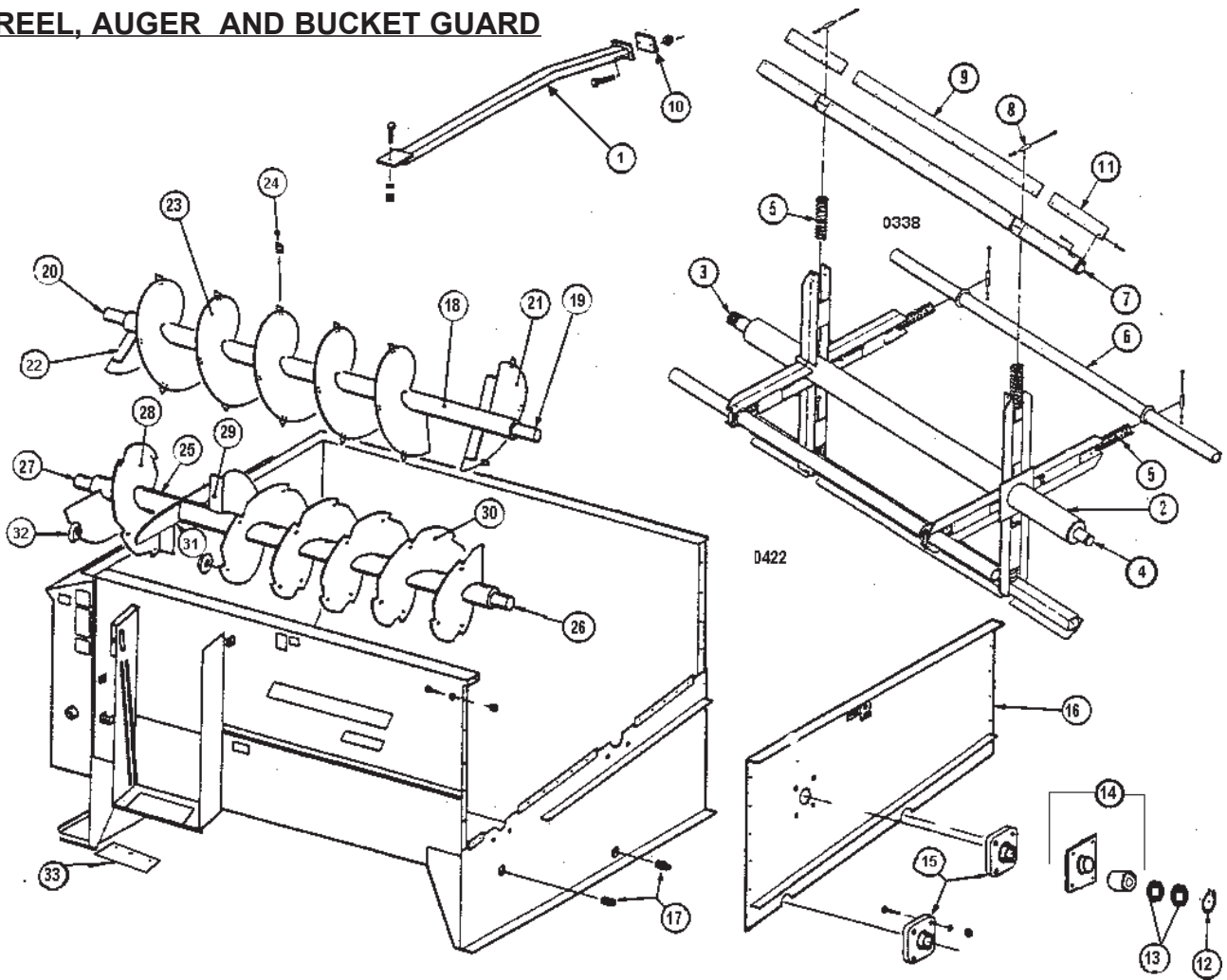


REF	PART NO	QTY	DESCRIPTION
1	101-733	1	Indicator Mount Assembly, Mtg Hrd: 3/8" x 1" B, Lw, Nut (4ea)
2	171-936	1	Hydraulic Hose Retaining Strap
3	133-376	2	Seal, Plastic; 2" ID x 3 1/2" OD x 5/16" Thk
4	133-852	2	Seal Retaining Plate; Mtg Hrd: 5/16" x 1 1/4" B FLN (2ea)
5	170-142	2	Snap Ring; 2" (Tru-Arc # 5100-200)
6	170-008	2	Bearing; 2", Mtg Hrd: 5/8" x 1 3/4" B, Lw, Nut (4ea), Upper Auger, 5/8" x 2 1/2" B, Fw, Lw, Nut (4ea) Lower Auger
7	170-800	3	Clinch Pin
8	170-478	3	Machine Chain; #4 x 12 Link (7")
9	172-006	3	Spring, Extension
10	136-907	1	Sprocket; 80-B-15/ 60-72, 2" Bore
11	174-654	1	Roller Chain; 80-1-68 Pitch, W/Connector Link
12	170-898	2	Key; 1/2" x 2 1/2" Square
13	133-853	1	Seal Spacer Pipe
14	136-260	1	Seal Plate
15	101-818	2	Chain Tightener Arm (#80)
16	134-155	3	Tightener Block, Mtg Hrd: 1/2" x 2 3/4" B, Fw, Lw, Nut (1ea)
17	136-908	1	Sprocket; 100-B-12, 80-42, 2" Bore
18	135-597	2	Seal, Washer, Plastic; 1/8" x 3" x 4-1/4"
19	102-511	1	Bearing Assembly, 3"; Mtg Hrd: 5/8" x 3" B, Fw, Lw, Nut (4ea)
	136-903	1	Plastic Sleeve, 3"
20	133-913	1	Sprocket; 100-B-82, 3" Splined Bore
21	171-931	1	Roller Chain; 100H-1-110 Pitch, W/Connector Link
22	171-934	1	Snap Ring; 3" (Tru-Arc 5100-300)
23	101-817	1	Chain Tightener Arm (#60)

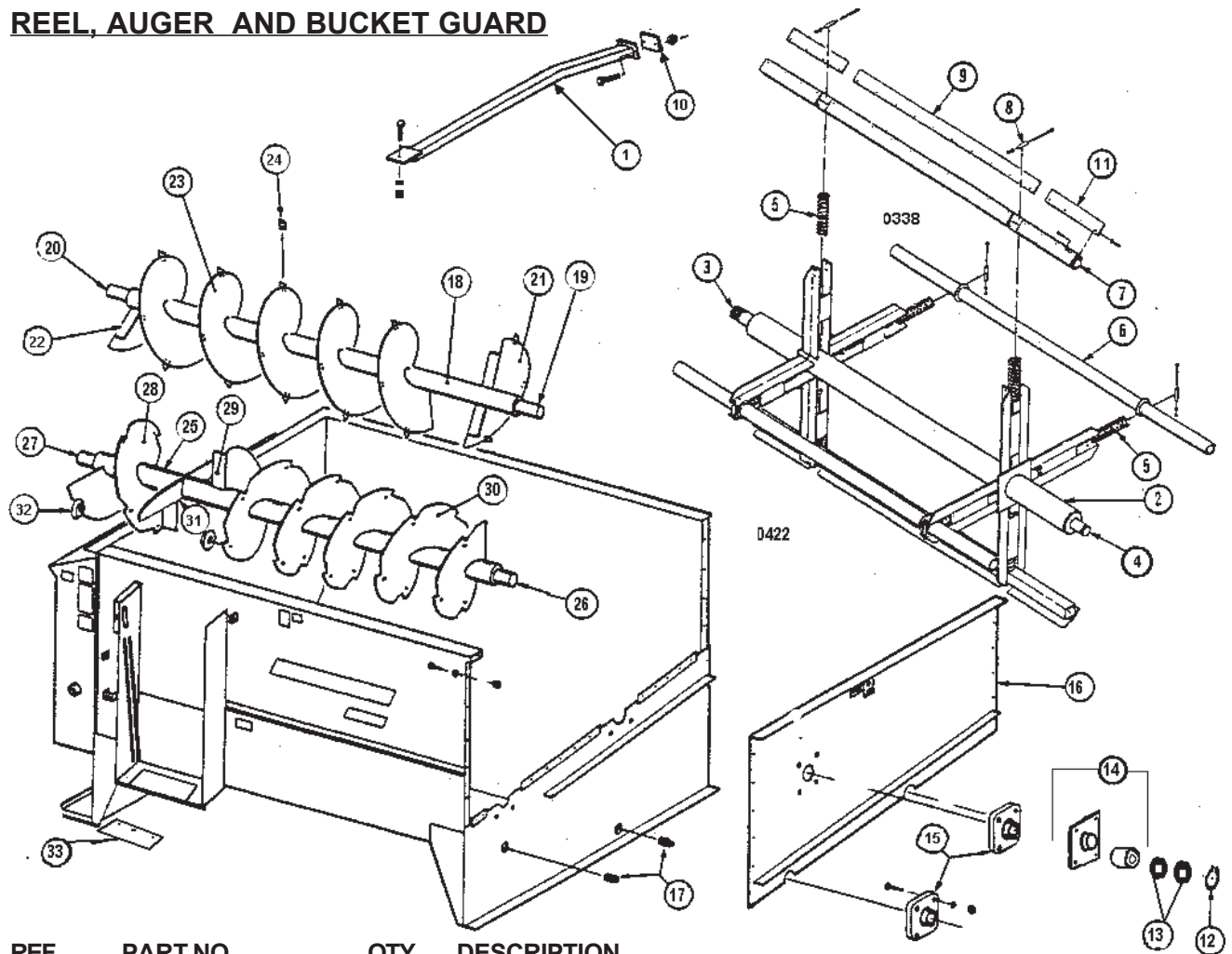
FRONT END PARTS

REF	PART NO	QTY	DESCRIPTION
24	174-653	1	Roller Chain; 60-1-160 Pitch, W/Connector Link
25	171-919	1	Drain Plug; 1 1/4" PVC
26	171-585	2	Bearing; 1 3/8",FYH NANF 207-22 Or Equiv; Mtg Hrd: (Rear) 1/2" x 1 1/2" B, Fw, Lw, Nut (3ea), (Front) 1/2" x 1 3/4" B, Lw, Nut (4ea)
27	172-193	2	Locking Collar;1 3/8"
28	136-042	1	Input Shaft; 1 3/8" x 15 1/4" (6 Spline)
29	171-409	1	Key; #1210 Woodruff (3/8" x 1 1/4")
30	136-906	1	Sprocket; 60-B-13, 1 3/8" Bore, 3/8" Keyway
31	173-164	1	Seal; Lip C/R # 13536
32	133-920	1	Belt; PTO Driveline Shield (1/8" x 9" x 16") Mtg Hrd: 5/16" x 3/4" B, FLN (4ea)
33	133-849	1	Safety Shield; Front Drive,Mtg Hrd: 3/8" NC Wing Nut(171-929), Fw (12ea)
34	171-935	15'	Front Shield Gasket, 3/8" x 3/4" Closed Cell Foam
35	170-142	1	Snap Ring, External; 2" - Not used in all applications.
36	134-366	1	Bearing Spacer
37	172-822	10	Compression Fitting; 1/8" NPT, Male
38	180-630	5	Nylon Tube; 3/16" OD (requires trimming)
39	172-823	4	Compression Fitting; 1/4" Straight Thread, Male - Not used in all applications.
40	170-244	5	3/8" Flat Washer
41	172-024	5	Pipe Coupling; 1/8" NPT
42	170-865	5	Zerk Fitting; 1/8" NPT
43	134-756	1	Washer Seal, Plastic; 1/8" x 2" x 3 3/8"
44	170-054	1	Bolt, 3/8" x 1 1/4", (2) Fw, L.N.

REEL, AUGER AND BUCKET GUARD



REF	PART NO	QTY	DESCRIPTION
1	102-503	1	Bucket Guard; Mtg Hrd: 3/8" x 1-1/4" Bolt, Lw, N (3ea)
2	102-512	1	Reel Weldment (3010)
	102-513	1	Reel Weldment (3015)
3	101-862	1	Front Plug Assembly, 2"
4	102-510	1	Rear Plug Assembly, 3"
5	171-920	8	Spring, 2-3/8"OD x 16" Lg.
6	101-867	2	Reel Cross Tube, 2-7/8"OD x 44-3/4" Lg.; (3010) Mtg Hrd: 3/8" x 4-1/2" Bolt, LN
	101-888	2	Reel Cross Tube, 2-7/8"OD x 67-1/4" Lg.; (3015) Mtg Hrd: 3/8" x 4-1/2" Bolt, LN
7	101-866	2	Wiper Tube Assembly; Mtg Hrd: 3/8" x 4-1/2" Bolt, LN (3010)
	101-887	2	Wiper Tube Assembly; Mtg Hrd: 3/8" x 4-1/2" Bolt, LN (3015)
8	135-698	8	Retaining Sleeve
9	134-293	2	Plastic Wiper Blade, 33-1/2" Lg. (3010) Mtg Hrd: 1/4" x 7/8" Bolt, Fw, Lw, Nut (10ea)
	134-112	2	Plastic Wiper Blade, 55-3/8" Lg. (3015) Mtg Hrd: 1/4" x 7/8" Bolt, Fw, Lw, Nut (10ea)
10	134-012	1	Mount Plate
11	134-123	4	Plastic Wiper Blade, 8-1/2" Lg.; Mtg Hrd: 1/4" x 7/8" Bolt, Fw, Lw, Nut (2ea)
12	170-142	1	Snap Ring; 2" (Tru-Arc 5100-200 or Equiv.)
13	171-048	A/R	Washer, Special 2" ID x .049 Thk.
	171-049	A/R	Washer, Special 2" ID x .127" Thk.

REEL, AUGER AND BUCKET GUARD

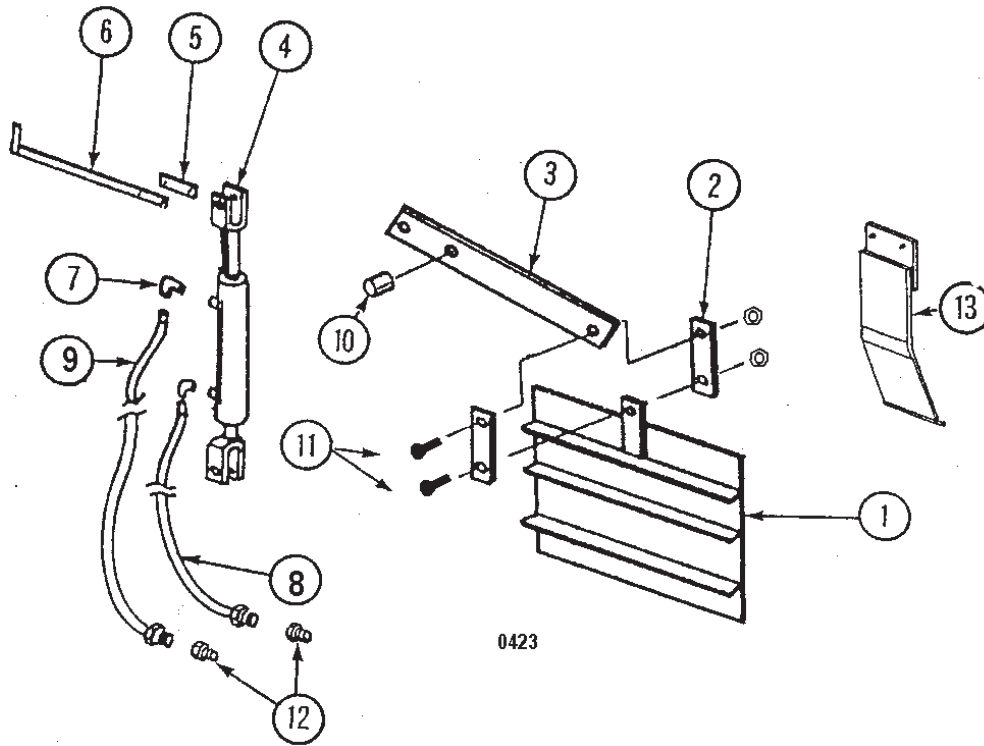
REF	PART NO	QTY	DESCRIPTION
14	102-260	1	Bearing Assembly; Mtg Hrd: 5/8" x 1 3/4" B, Lw, Nut (4ea)
	135-701	1	Plastic Sleeve; 2"
15	170-000	2	Bearing; 1 3/8" 4 Bolt Flanged, Mtg Hrd: 1/2" x 1 1/2" B, Lw, Nut (4ea)
16	102-509	1	Rear Panel Assembly
17	171-919	2	Drain Plug; 1 1/4" PVC
18	102-492	1	Upper Auger Assembly (3010)
	102-495	1	Upper Auger Assembly (3015)
19	101-707	1	Rear Plug Assembly
20	101-708	1	Front Plug Assembly
21	133-833	1	Flight; 1/4" - 4" - 14" - 14" x 7" LH
22	134-758	4	Flighting Support Brace
23	134-740	2	Flight; 3/8" - 4" - 14" - 10" x 65.5" RH
24	174-558	40	Upper Auger Knife(Qty. may vary) Mtg Hrd: 1/4" x 3/4" Bolt, LW & Nut (2 ea.)
25	102-493	1	Lower Auger Assembly (3010)
	102-496	1	Lower Auger Assembly (3015)
26	101-709	1	Rear Plug Assembly
27	101-708	1	Front Plug Assembly
28	133-832	1	Flight; 3/8" - 4" - 16" - 16" RH
29	131-011	2	Flighting Support Brace
30	133-831	4	Flight; 3/8" - 4" - 16" - 16" LH, Actual Requirements: 3-1/2 pieces
31	134-499	2	Paddle
32	134-351	12	Lower Auger Knife; (Qty. may vary); Mtg Hrd: 3/8" x 1" Bolt, Lw, Nut
33	171-346	1	Magnet, Plate; Mtg Hrd: 1/4" x 3/4" Truss Hd Bolt, Lw, Nut (6ea)

KUHN KNIGHT INC.

1501 West 7th Ave. Brodhead, WI 53520-0167

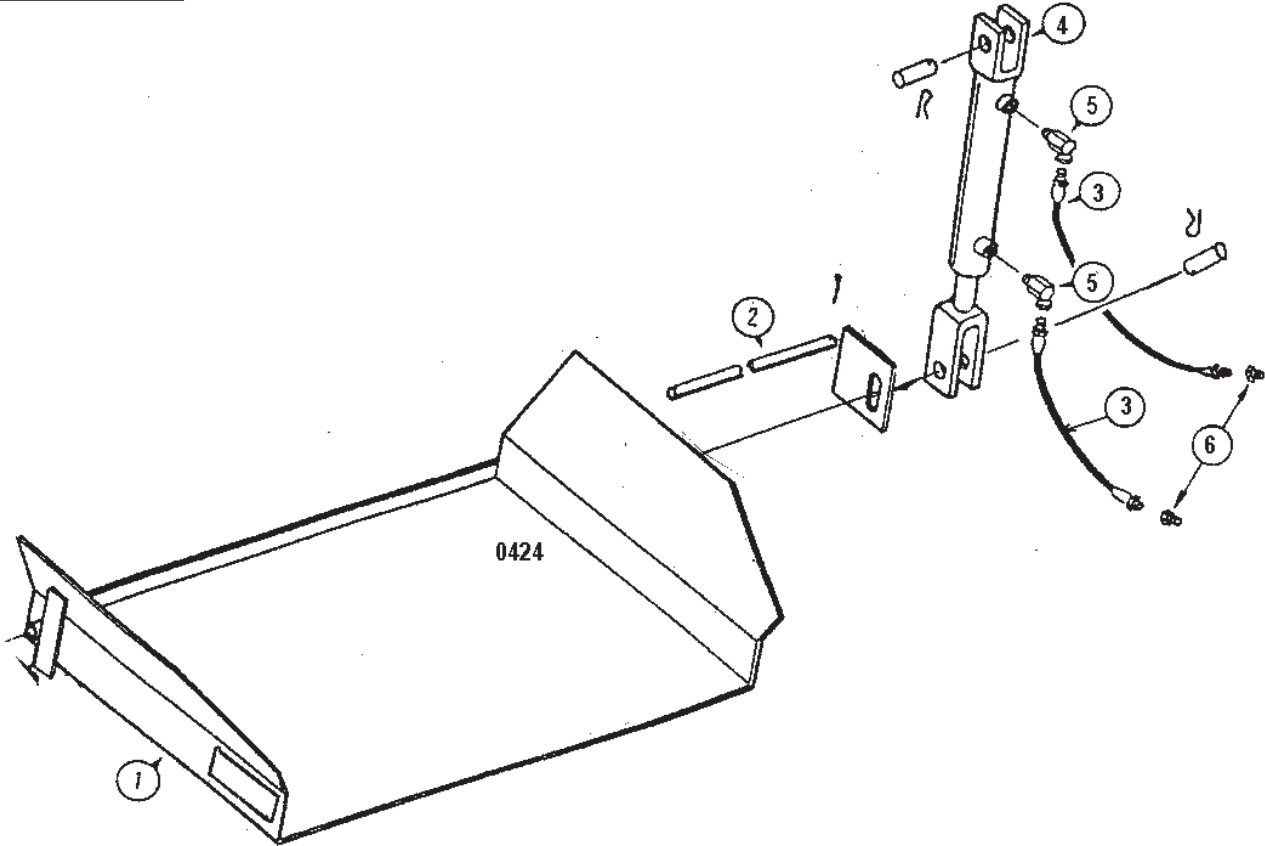
701 Cherry Ave. Greeley, Co. 80632

DOOR PARTS



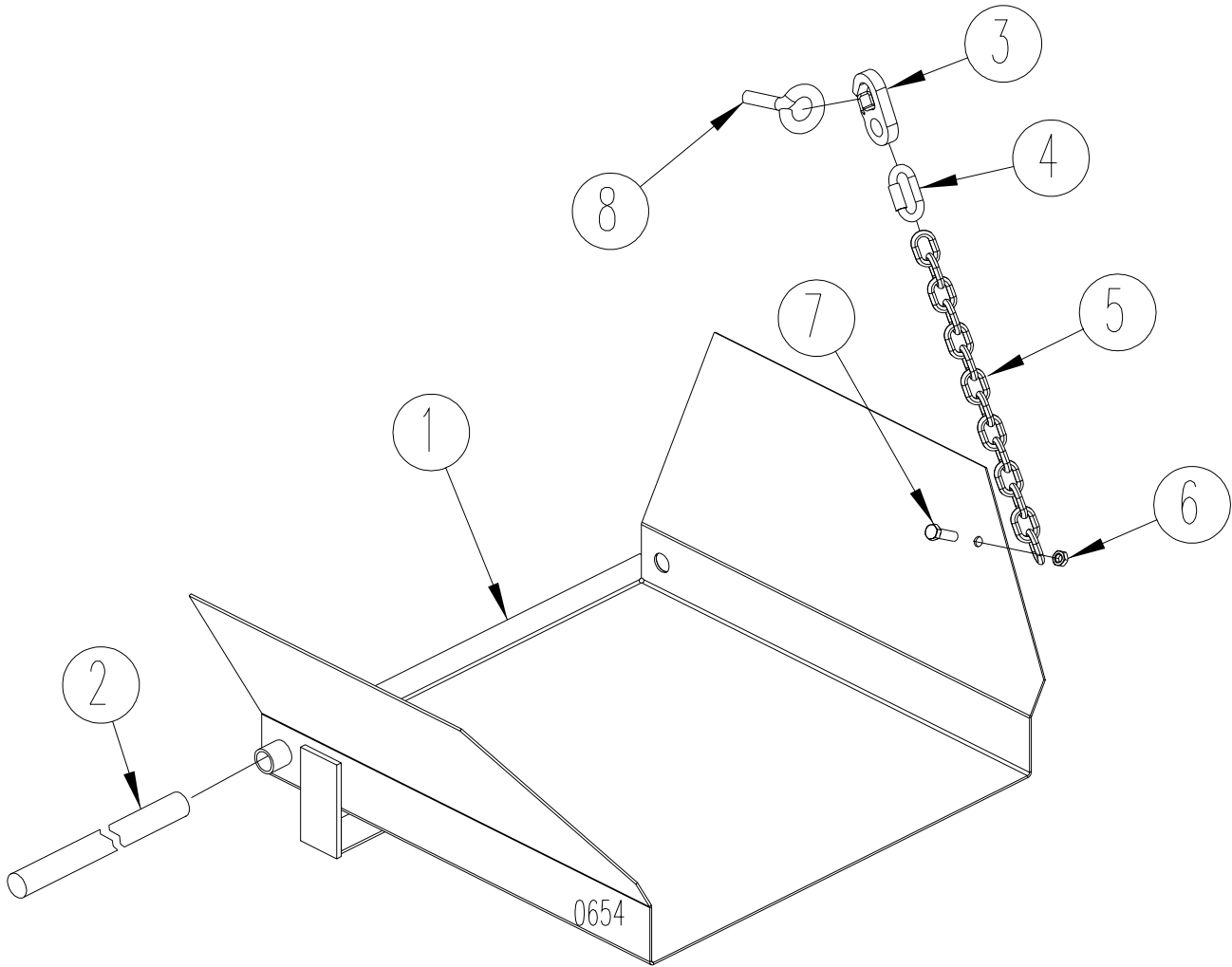
REF	PART NO	QTY	DESCRIPTION
1	102-506	1	Door Assembly
2	133-445	2	Door Linkage Bar, 3/8" x 2" x 8"
3	136-764	1	Door Pivot Bar, 5/8" x 4" x 31"
4	173-270	1	Hydraulic Cylinder; 2" Dia x 8" Stroke (Seal Kit 170-075)
5	136-419	1	Door Gauge Mount, 1/8" x 5/8" x 3-1/4"
6	136-492	1	Door Gauge, 1/8" x 5/8" x 18-1/2"
7	171-030	2	Mtg Hrd: 1/4" x 1" Truss Head Bolt, Lw, Nut (2ea) Swivel Adapter; 3/8" - 90°
8	170-468	1	Hydraulic Hose; 1/4" x 162"
9	170-471	1	Hydraulic Hose; 1/4" x 170"
10	170-073	1	Pin; 1" dia. For Door Pivot Bar (133-924) Secures with (170-074) Hairpin Clip
11	172-381	2	Bolt; 5/8" x 2 1/2", Ln
12	170-235	2	Reducer Bushing; 1/2" to 3/8"
13	134-345	1	Door Flow Control Plate; (Option) Mtg Hrd: 5/16" x 1-1/4" Bolt, Lw, Nut (2ea)

SLIDE TRAY



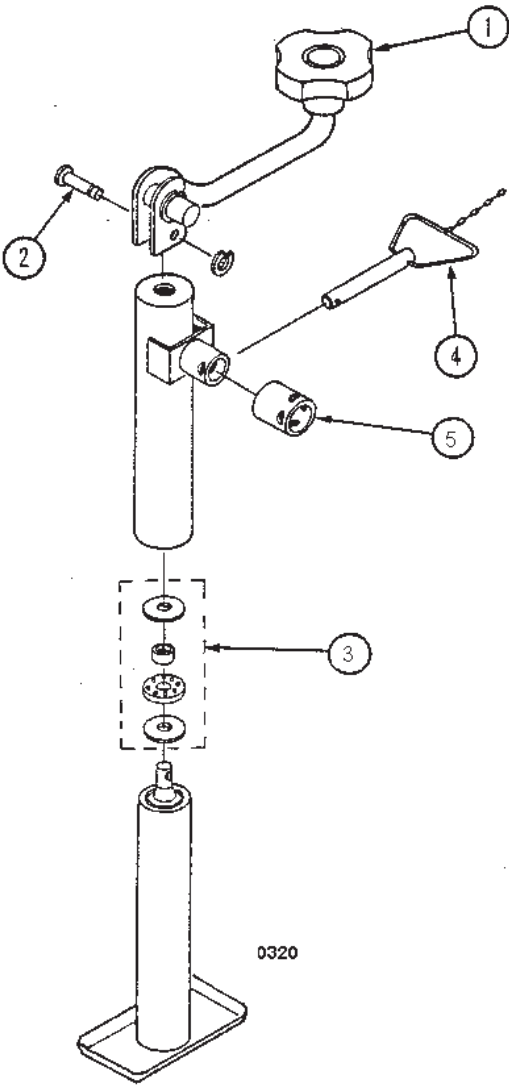
REF	PART NO	QTY	DESCRIPTION
1	102-505	1	Slide Tray Assembly(See Decal Section For Decals)
2	136-761	1	Pivot Rod, 3/4" x 39-1/2" Lg. (secure with 170-115 cotter pin; 2ea)
3	171-464	2	Hydraulic Hose; 1/4" x 190"
4	173-270	1	Hydraulic Cylinder; 2" x 8" (Seal Kit # 170-075)
5	171-030	2	Swivel Connector; 3/8" x 90°
6	170-235	2	Reducer Bushing; 1/2" to 3/8"

ADJUSTABLE SLIDE TRAY



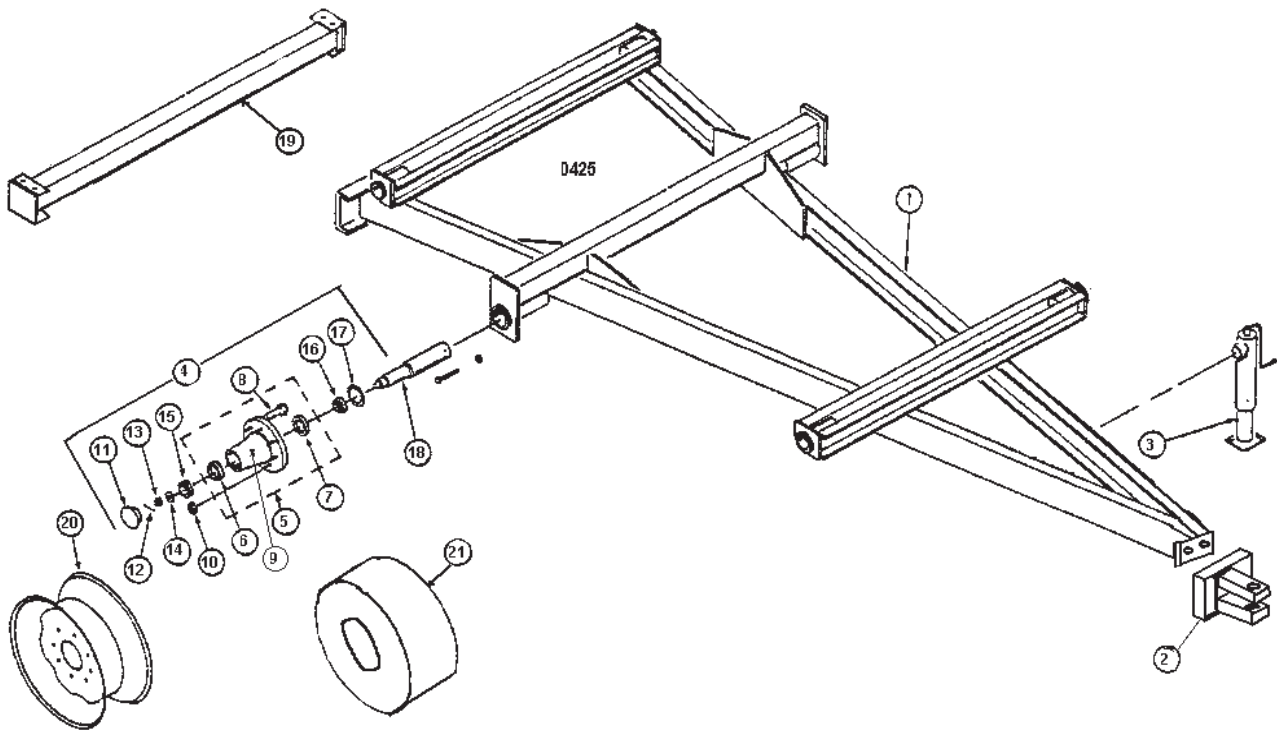
REF	PART NO	QTY	DESCRIPTION
1	102-505	1	Slide Tray Assembly(See Decal Section For Decals)
2	136-761	1	Pivot Rod, 3/4" x 39-1/2" Lg. (secure with 170-115 cotter pin; 2ea)
3	175-313	1	Snap, Safety
4	175-312	1	Connector, Threaded
5	181-063	1	Chain
6	170-047	1	Nut, Lock, 3/8"
7	170-005	1	Bolt, Hex, 3/8" x 1 1/4"
8	175-311	1	Bolt, Eye; Mtg. Hrd: 1/2" Nut(170-004) (2ea)

JACKSTAND



REF	PART NO	QTY	DESCRIPTION
	170-984	1	Jackstand Assembly
1	170-386	1	Crank Assy
2	171-860	1	Crank Pin (Includes "C" Washer)
3	170-397	1	Thrust Bearing Kit
4	170-987	1	Pin and Chain Assy
5	170-985	1	Mount Tube

UNDERCARRIAGE



REF	PART NO	QTY	DESCRIPTION
1	102-500	1	Undercarriage Weldment For 3010
	102-501	1	Undercarriage Weldment For 3015
2	101-741	1	Tongue Clevis Assy; Mtg Hrd: 3/4" x 2" Bolt, (grd8) Ln, (grd 8) (2 ea)
3	170-984	1	Jackstand (refer to jackstand parts pages for parts breakdown)
4	174-587	2	8-Bolt Hub Assembly(Use after 4/99)
5	174-582	2	8-Bolt Hub
6	171-825	1	Outer Bearing Race (Timken # LM501310) or Equiv.
7	174-583	1	Inner Bearing Race (Timken # JLM506810) or Equiv.
8	174-586	8	Stud; 5/8" NF
9	170-865	1	Grease Zerk, 1/8" NPT
10	171-827	8	Nut; 5/8" NF (171-827 Included with 174-582)
11	171-830	2	Dust Cap
12	170-056	2	Cotter Pin; 1/4" x 2"
13	171-833	2	Castle Nut; 1" NF Wheel Nut
14	171-832	2	Flat Washer, 1" Heavy
15	171-829	2	Outer Bearing Cone (Timken # LM501349) 2.165 or Equiv.
16	174-584	2	Inner Bearing Cone (Timken # 387AS) or Equiv.
17	174-585	2	Grease Seal (C/R 25091) or Equiv.
18	136-990	2	Spindle; 2-1/2" x 14" Mtg Hrd: 3/8" x 4" Bolt & LN
19	101-909	2	Riser Option; Mtg Hrd: 5/8" x 1-3/4" Bolt, LN (8ea)
20	170-844	2	Wheel; 15" x 10, 8 - Bolt
21	171-535	2	12.5L X 15 Implement Tire

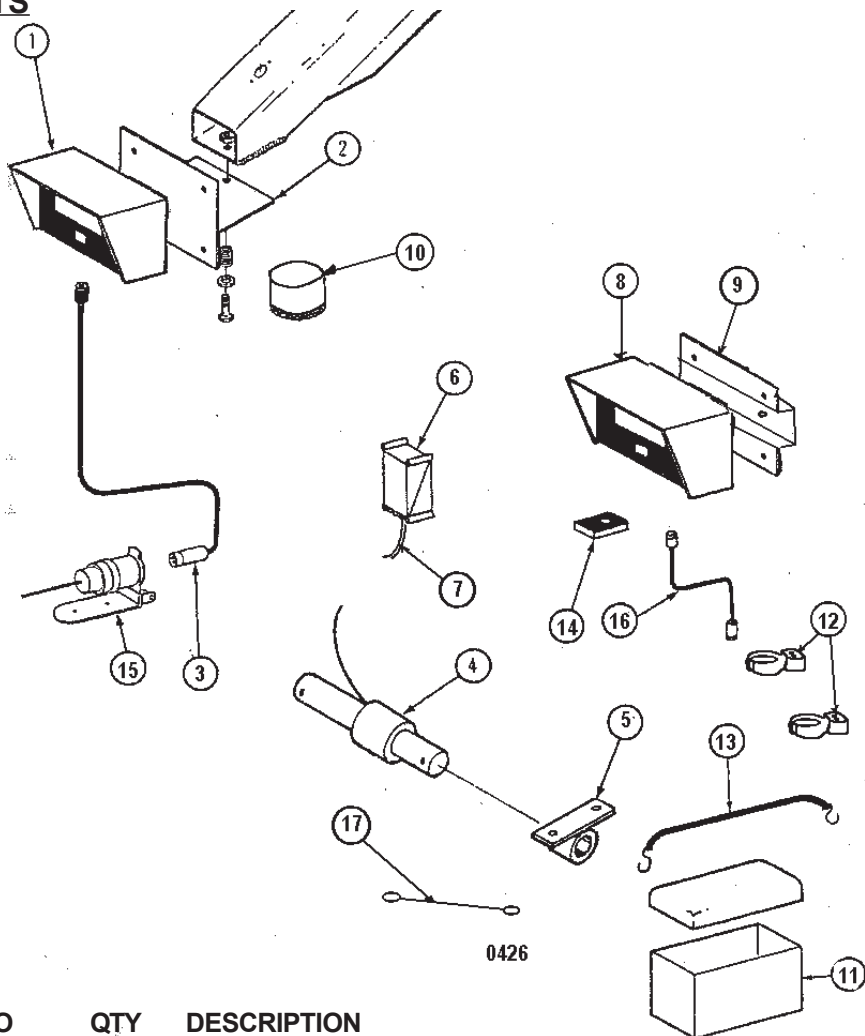
(continued next page)

UNDERCARRIAGE (continued)

REF	PART NO	QTY	DESCRIPTION
4	170-755 ^A	2	8-Bolt Hub Assembly
5	170-705 ^A	2	8-Bolt Hub with races
6	170-546 ^A	1	Outer Bearing Race (Timken # 14276) or Equiv.
7	170-553 ^A	1	Inner Bearing Race (Timken # 3720) or Equiv.
8	171-826 ^A	8	Stud; 5/8" NF
9	170-865 ^A	1	Grease Zerk, 1/8" NPT
10	171-827 ^A	8	Nut; 5/8" NF (171-827 Included with 174-582)
11	170-550 ^A	2	Dust Cap
12	170-236 ^A	2	Cotter Pin; 5/32" x 1-1/2"
13	170-132 ^A	2	Castle Nut; 7/8" NF Wheel Nut
14	170-131 ^A	2	Flat Washer, 7/8" Heavy
15	170-545 ^A	2	Outer Bearing Cone (Timken # 14137A) 2.165 or Equiv.
16	170-554 ^A	2	Inner Bearing Cone (Timken # 3780) or Equiv.
17	170-556 ^A	2	Grease Seal (C/R 25105) or Equiv.
18	171-745 ^A	2	Spindle; 2-1/2" x 14" Mtg Hrd: 3/8" x 4" Bolt & LN

A: All tow models 3010 & 3015 before 4/99 used 171-755 Hubs.

SCALE PARTS



REF	PART NO	QTY	DESCRIPTION
1	172-128	1	Digi-Star Model EZ-2000 Basic Indicator for 1 7/8 Weigh Bar
	172-800	1	Digi-Star Model EZ-View 2000 Indicator, 1.7" Display for 1 7/8 Weigh Bar
	172-130	1	Digi-Star Model EZ-3200V Indicator for 1 7/8 Weigh Bar
	174-501	1	Digi-Star Model EZ-3200V Indicator (with serial port) for 1 7/8 Weigh Bar
	172-500	1	Digi-Star Model EZ-3200 Indicator for 1 7/8 Weigh Bar
	174-502	1	Digi-Star Model EZ-3200 Indicator (with serial port) for 1 7/8 Weigh Bar
	173-225	1	Weigh-Tronix Model 615 Basic Indicator for 1 7/8 Weigh Bar
	173-226	1	Weigh-Tronix Model 615 Basic Indicator, 2" Display for 1 7/8 Weigh Bar
	173-227	1	Weigh-Tronix Model 715 Indicator for 1 7/8 Weigh Bar
	174-503	1	Weigh-Tronix Model 715 Indicator (with port) for 1 7/8 Weigh Bar
	173-228	1	Weigh-Tronix Model 1015 Indicator for 1 7/8 Weigh Bar
	174-504	1	Weigh-Tronix Model 1015 Indicator (with port) for 1 7/8 Weigh Bar
			Mtg Hrd for all indicators: 1/4" x 3/4" Bolt,
2	101-835	1	Indicator Mount, Mtg Hrd: Spring (170-238) 3/8" x 2" Bolt, Fw & Ln
3	172-354	1	Power Cord Assy
4	172-139	4	Weigh Bar; 1-7/8" Dia, (DigiStar)
	173-229	4	Weigh Bar; 1-7/8" Dia; Mtg Hrd: 5/8" x 3-1/2" Bolt, Ln(1ea) (Weigh-Tronix)
	136-762	4	Dummy Weigh Bar Mount (For Units Without Scales)
5	102-504	4	Weigh Bar Mount Spool
6	103-052	1	Junction Box W/15' cable; #10 x 1" SMS (2 ea)
7	173-156	1	15' Replacement Junction box cable
	172-165	1	30' Junction box extension cable (not shown)
	172-166	1	10' Junction box extension cable (not shown)

SCALE PARTS**Optional Items:**

8	172-803	1	RD 2000 Remote, 1" Display w/ 25' Cord
	172-801	1	RD 2000V Remote 1.7" Display w/ 25' Cord
	172-804	1	RD 2000 Remote, 1" Display w/ Transmitter & 25' Cord
	172-802	1	RD 2000V Remote, 1.7" Display w/ Transmitter & 25' Cord
	174-505	1	Weigh-tronix 712 Remote, 1" Display w/ 30' Cord
	174-506	1	Weigh-tronix 712XL Remote, 2" Display w/ 30' Cord
	174-507	1	Weigh-tronix 1012 Remote, 1" Display w/ 30' Cord
9	134-409	1	Remote Indicator Mount, Mtg Hrd: 5/16 x 3/4 Bolt, Lw, Nut (2 ea), 1/4 x 3/4 Bolt, Fw, Lw, Nut (2ea)
10	101-917	1	Digi-Star Alarm Horn Assembly Mtg Hrd: #6 x 3/4" Bolt, LW & Nut (2 ea)
	101-918	1	Weigh-tronix Alarm Horn Assembly Mtg Hrd: #6 x 3/4" Bolt, Lw & Nut (2 ea)
11	171-158	1	Battery Box
12	171-380	2	Battery Terminals
13	171-936	1	Battery Hold-Down Strap
14	172-143	1	Digi-Star hand held transmitter(Installed Receiver is Required)
	172-350	1	Weigh-tronix hand held transmitter(Installed Receiver is Required)
15	170-415	1	Plug - Tractor Mount
16	174-719	1	EZ-R Remote Indicator Cord
17	132-988	1	16 Ga Ground Wire

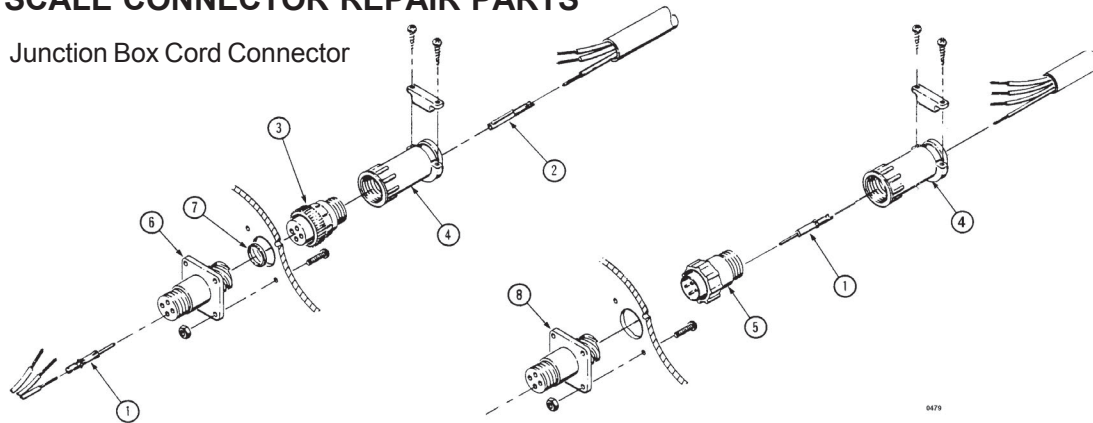
Service Tools:

172-386	1	Precision Calibrator For Scale Indicators
171-960		Cord Splice Kit

* All (4) weigh bars must be the same brand to properly function and will work with either the J-Star or Weigh-tronix indicator.

SCALE CONNECTOR REPAIR PARTS

Junction Box Cord Connector

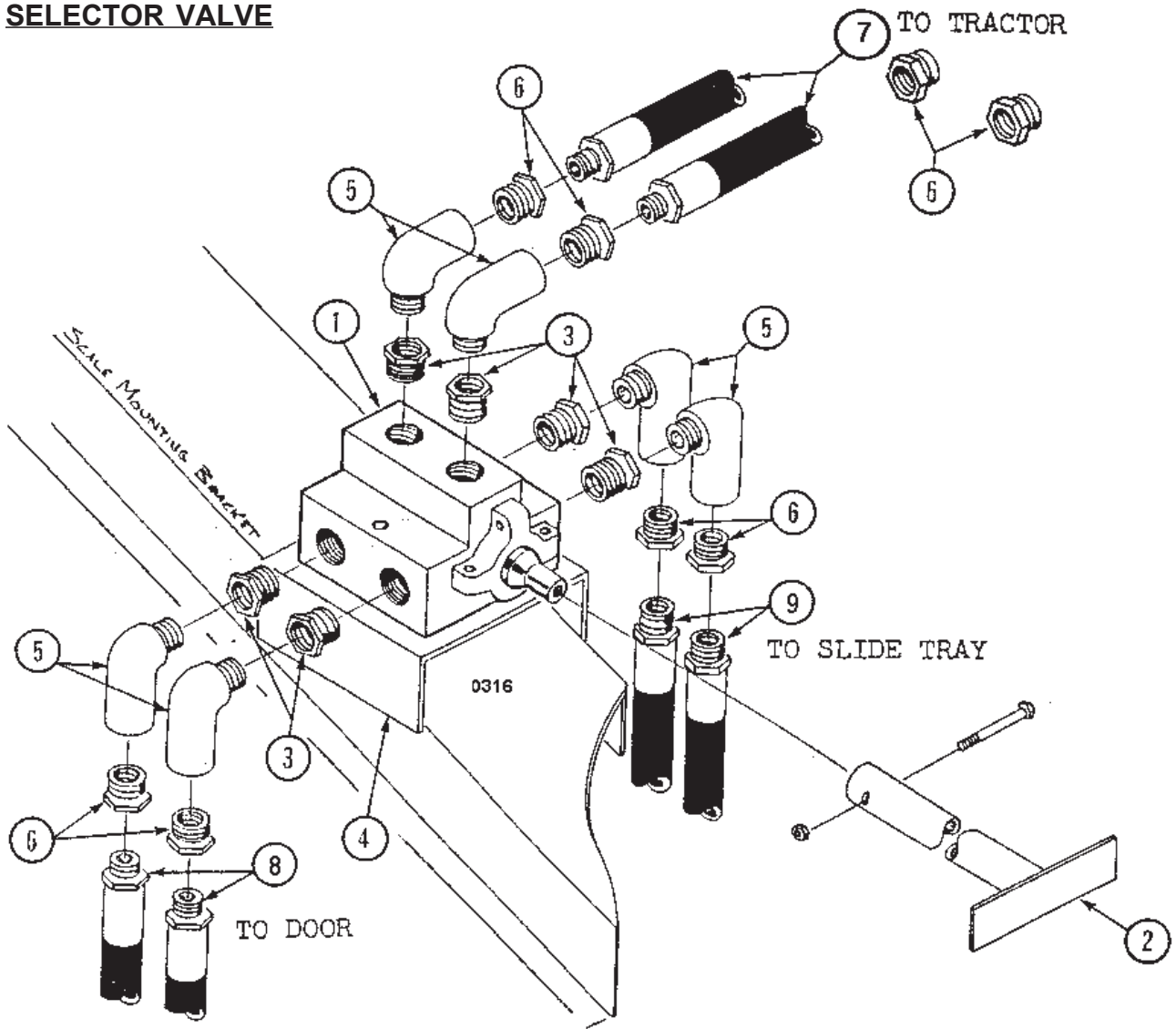


REF	PART NUMBER	QTY	DESCRIPTION
1	173-211	4	Contact Pin
2	173-212	4	Contact Socket
	173-216	1	Pin Extraction Tool (<i>not shown</i>)
3	173-213	1	Power Cord Connector
	174-923	1	Nut, power cord
4	173-214	1	Power Cord Strain Relief
5	173-215	1	Junction Box Cord Connector
	174-923	1	Nut, power cord
6	173-217	1	Power Connector Chassis
7	173-218	1	Seal for Power Connector Chassis
8	173-219	1	Load Cell Connector Chassis
9	171-960	1	Cord Splice Kit (Not Shown)

KUHN KNIGHT INC.

1501 West 7th Ave. Brodhead, WI 53520-0167
701 Cherry Ave. Greeley, Co. 80632

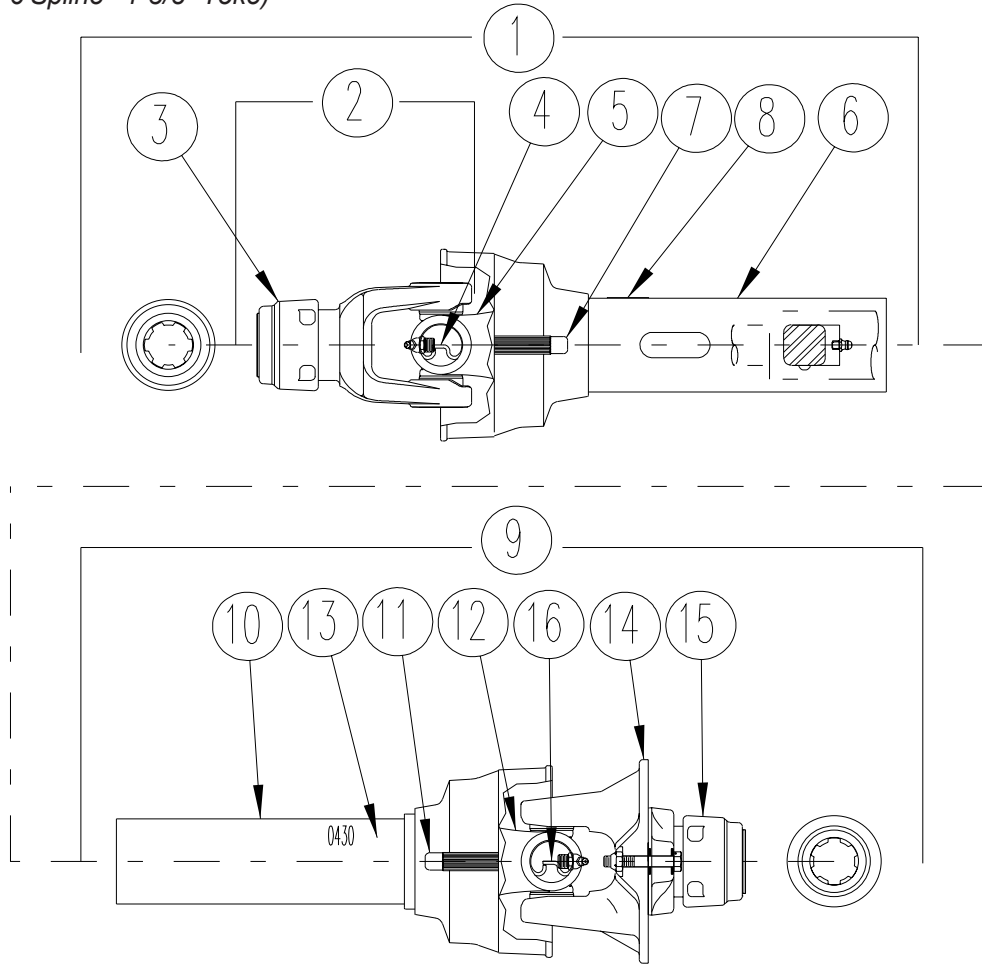
SELECTOR VALVE



REF	PART NO	QTY	DESCRIPTION
1	101-891	1	Selector Valve Assembly (Seal Kit # 172-784); Mtg Hrd: 3/8" x 3" Bolt, Fw, Lw, Nut (2ea)
2	101-791	1	Control Handle Assembly; Mtg Hrd: 1/4" x 1-1/2" Bolt, Ln
3	171-430	6	Reducer Bushing; 3/4" Male to 1/2" Female
4	134-136	1	Valve Bracket, Mtg Hrd: 5/16" x 3/4" B, Lw, Nut (4ea)
5	171-136	6	Street Elbow; 1/2" - 90°
6	170-235	8	Reducer Bushing; 1/2" Male to 3/8" Female
7	171-998	2	Hydraulic Hose 1/4" x 118"
8	170-465	2	Hydraulic Hose 1/4" x 127"
9	170-468	2	Hydraulic Hose 1/4" x 162"

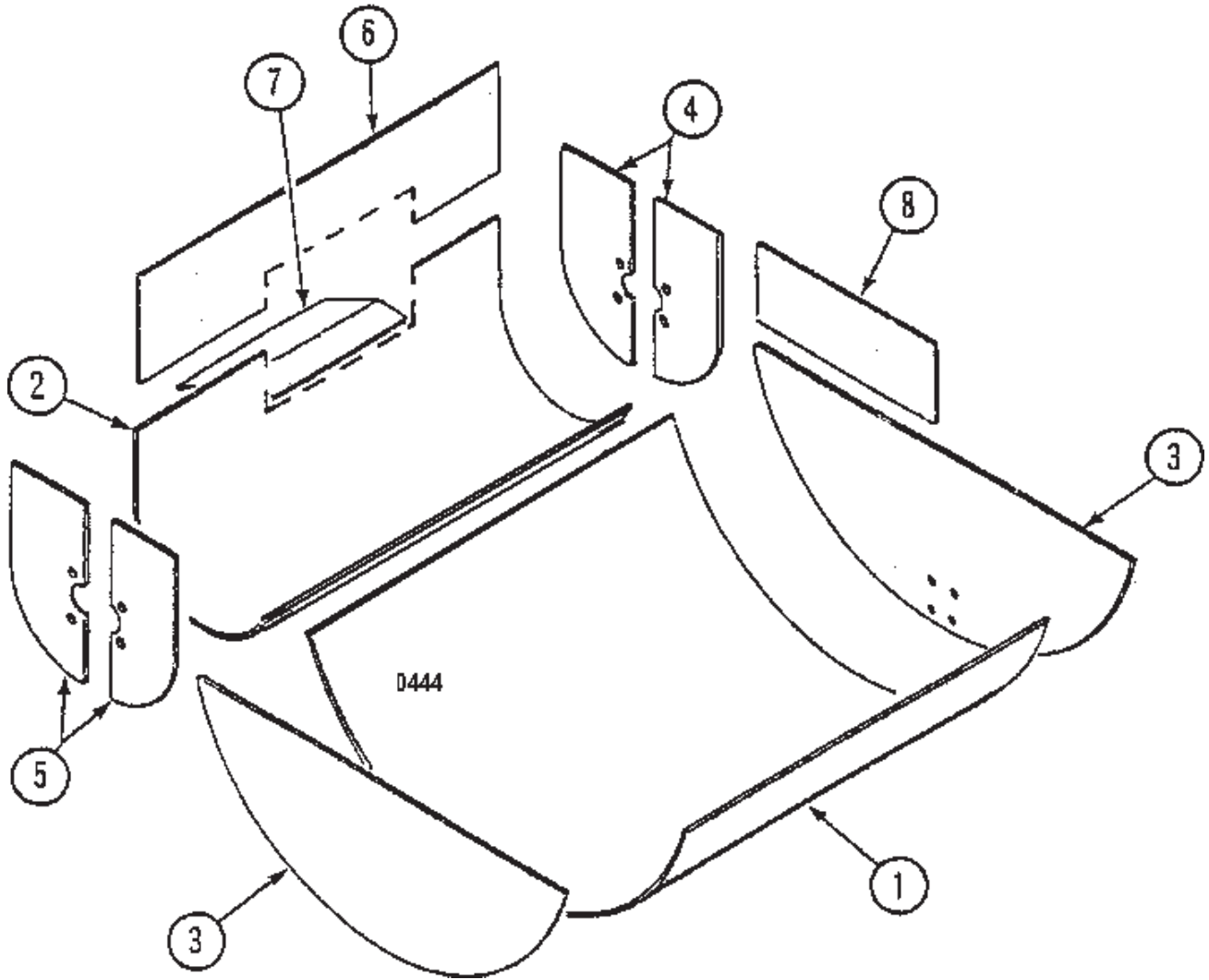
PTO DRIVELINE

(540 RPM - 6 Spline - 1-3/8" Yoke)



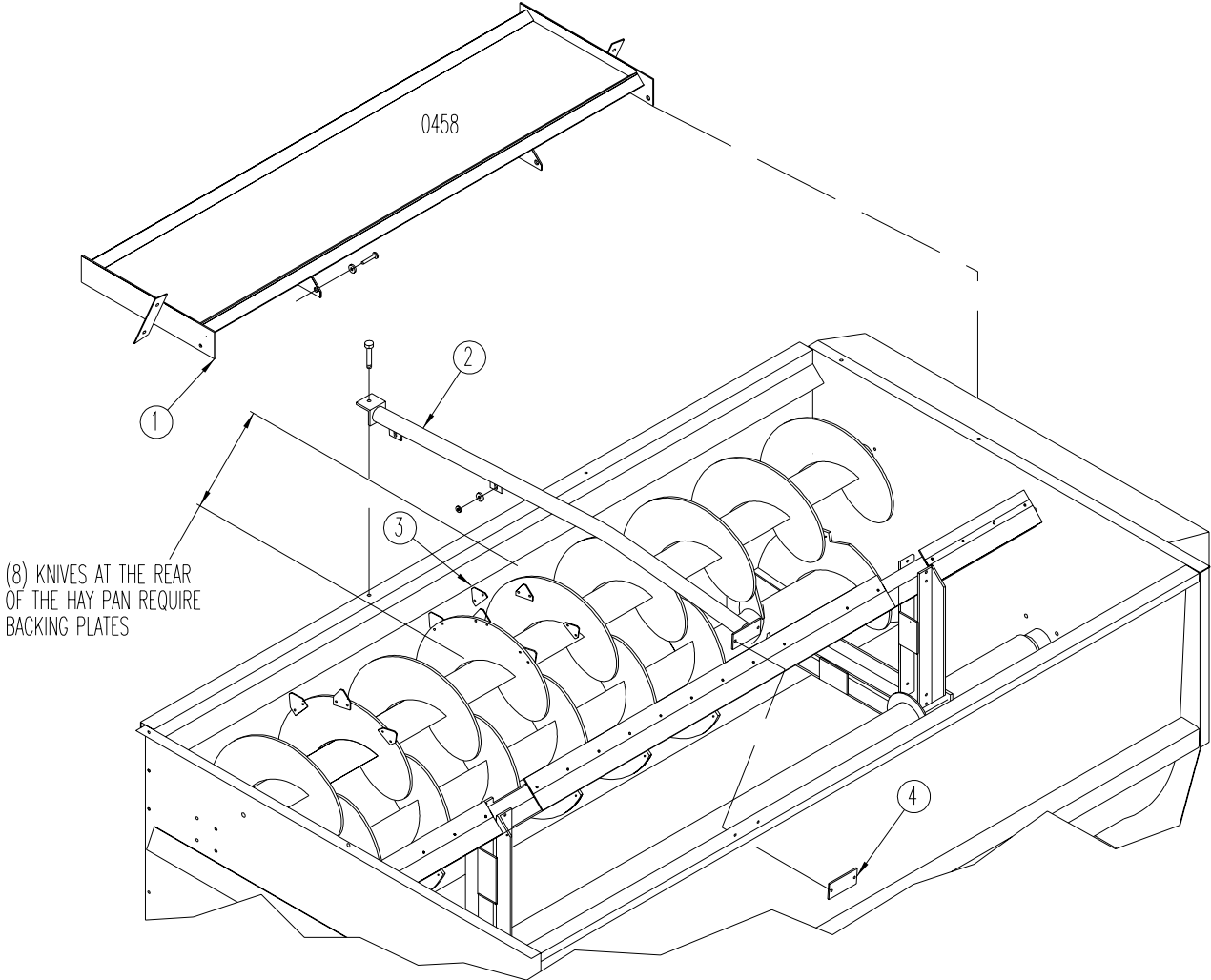
REF	PART NO	QTY	DESCRIPTION
	173-428	1	Driveline Complete
1	171-751	1	Joint and Shaft Half with Guard
2	172-018	1	Yoke Assembly
3	172-019	1	Safety Slide Lock Repair Kit
4	170-720	1	Cross and Bearing Kit
5	171-753	1	Yoke and Shaft
6	171-756	1	Outer Guard
7	170-220	1	Nylon Repair Kit
8	171-550	1	Safety Decal
9	173-427	1	Joint and Tube Half with Guard
10	171-755	1	Inner Guard
11	170-220	1	Nylon Repair Kit
12	171-754	1	Yoke Tube and Slip Sleeve
13	171-799	1	Safety Decal
14	172-926	1	Shear Yoke Assembly
	172-986	1	Shear Bolt; 1/4" x 2" (grade 5)
	170-069	1	Lock Nut; 1/4" (grade 5)
15	172-019	1	Safety Slide Lock Repair Kit
16	170-720	1	Cross and Bearing Kit

REPAIR LINER



REF	PART NO		QTY	DESCRIPTION
		Mild Steel		
		Stainless Steel		
1	134-701		1	Reel Liner (3010 only)
	134-709	141-581	1	Reel Liner (3015 only)
2	134-702		1	Auger Liner (3010 only)
	134-710	141-579	1	Auger Liner (3015 only)
3	134-703	141-580	2	Reel End Panel
4	134-707	141-577	1	Auger End Liner (front)
5	134-708	141-578	1	Auger End Liner (rear)
				Part number includes both left and right halves.
6	134-704	141-576	1	Upper Door Liner
7	134-706	141-575	1	Door Opening Liner
8	134-705	141-582	1	Upper Reel End Liner

HAY MAXX SYSTEM



REF	PART NO	QTY	DESCRIPTION
1	102-499	1	HAY MAXX Attachment; Mtg Hrd: 1/2" x 1-1/4" B, LN (4ea.), 1/2" x 1-1/2" B, Ln (2ea.) Shim with 1/2" FW (As Required)
2	102-502	1	Bucket Guard; Mtg Hrd: 3/8" x 1-1/4" B, LW, N (2ea.), 1/2" x 1-1/2"B, FW, LN (1ea)
3	136-921	8	Backing Plate
4	134-012	1	Bucket Guard Mount

DECALS

The following decals are listed below for your convenience.
Use the operator's manual for decal location and part number ordering.

PART NO	QTY	DESCRIPTION
174-631	1	Complete Set of Decals (3010)
174-632	1	Complete Set of Decals (3015)
174-514	3	" <i>KUHN KNIGHT</i> " logo
173-447	2	" <i>REEL AUGGIE</i> "
173-448	11'	Black Stripe
170-849	3	WARNING, Stay Clear Of Power Driven Parts
171-712	1	Retighten Setscrews...
171-820	4	DANGER, Rotating Auger Inside
170-490	1	Reduce Engine RPM...
174-550	2	"3010"
174-551	2	"3015"
171-911	1	CAUTION, Operating Precautions
171-913	1	WARNING, Do Not Operate Unless Shields Are In Place
171-915	1	DANGER, Do Not Operate! Shield Missing
171-947	4	DANGER, Do Not Hand Load
171-948	1	BEWARE, Operating Mixer While Loading
171-949	1	Patent Information
172-292	1	Mixer Fill Line
170-893	1	SMV
171-748	1	Door Height Gauge
171-916	1	Danger, Stay Clear of Rotating...
172-820	1	CAUTION, Lifting Instructions
172-883	1	Oil Level Plug
173-040	1	CAUTION, PTO Operation
173-044	1	Made in Wisconsin

PAINT:

170-366	Kuhn Knight Yellow - Aerosol Can	170-367	Kuhn Knight Red - Aerosol Can
170-812	Kuhn Knight Yellow - Quart Can	170-814	Kuhn Knight Red - Quart Can
170-813	Kuhn Knight Yellow - Gallon Can	170-815	Kuhn Knight Red - Gallon Can

OPTIONAL KITS:

003858	Tow Safety Chain, 20,000#
003802	Highway Light Kit
003888	Electric Switching Valve
003836	Riser Kit

HARDWARE PART NUMBER LISTING

All fasteners are NC thread, Grade 5 unless otherwise specified.

HEX HEAD BOLTS

Size	Part No		
1/4 x 1/2	173-279	1/2 x 3/4	171-252
1/4 x 3/4	170-803	1/2 x 1	170-149
1/4 x 7/8	171-094	1/2 x 1-1/4	170-373
1/4 x 1	170-310	1/2 x 1-1/2	170-002
1/4 x 1-1/2	170-068	1/2 x 1-1/2 (Grade 8)	172-951
1/4 x 2	172-986	1/2 x 1-3/4	171-774
1/4 x 2 (Grade 8)	175-073	1/2 x 2	171-802
1/4 x 2-3/4	171-203	1/2 x 2-1/4	172-387
1/4 x 3	171-403	1/2 x 2-1/2	170-885
1/4 x 3-1/2	173-640	1/2 x 2-1/2 (Full thread)	171-099
1/4 x 4	173-505	1/2 x 2-3/4	172-007
		1/2 x 3	170-168
5/16 x 5/8	170-532	1/2 x 3-1/2	170-167
5/16 x 3/4	170-262	1/2 x 3-1/2 (Grade 8)	172-950
5/16 x 3/4 (Stainless steel)	174-787	1/2 x 4	173-111
5/16 x 7/8	170-256	1/2 x 4 (Full thread)	171-509
5/16 x 1	170-027	1/2 x 5	171-412
5/16 x 1-1/4 (Full thread)	170-188	1/2 x 6	173-506
5/16 x 1-1/2	170-372	1/2 x 6 (Grade 8)	174-944
5/16 x 1-3/4	170-263	1/2 x 6-1/2	173-711
5/16 x 2	172-987	1/2 x 7	174-328
5/16 x 2-1/2	170-369	1/2 x 7-1/2	175-107
5/16 x 3	170-295	1/2 x 8-1/2	170-504
5/16 x 3-1/4	171-639	1/2 x 11	170-506
5/16 x 3-1/2	173-748		
5/16 x 4	170-293	9/16 x 1	173-699
5/16 x 4-1/2	170-294	9/16 x 1-1/4	173-700
5/16 x 5 (Grade 8)	172-983	9/16 x 1-1/2	173-701
5/16 x 5-1/2 (Grade 8)	172-952	9/16 x 2	172-219
		5/8 x 1	171-087
3/8 x 3/4	170-439	5/8 x 1-1/4	171-366
3/8 x 3/4 (Stainless steel)	174-788	5/8 x 1-1/2	170-153
3/8 x 7/8	170-268	5/8 x 1-3/4 (Full thread)	170-030
3/8 x 7/8 (soc. hd.capscrew)	172-044	5/8 x 2	170-009
3/8 x 1	170-054	5/8 x 2 (Full thread)	171-772
3/8 x 1-1/4	170-005	5/8 x 2-1/4	173-009
3/8 x 1-1/4 (Stainless steel)	174-917	5/8 x 2-1/2	172-381
3/8 x 1-1/2	170-368	5/8 x 2-1/2 (Full thread)	170-129
3/8 x 1-3/4	172-383	5/8 x 2-3/4	172-356
3/8 x 2	170-245	5/8 x 3	170-258
3/8 x 2-1/4	170-320	5/8 x 3-1/2	170-038
3/8 x 2-1/2	170-257	5/8 x 4	170-371
3/8 x 2-1/2 (Full thread)	170-128	5/8 x 4-1/2	170-067
3/8 x 2-1/2 (Lag)	171-775	5/8 x 5	170-065
3/8 x 3	170-380	5/8 x 5-1/2	172-421
3/8 x 3-1/2	170-292	5/8 x 6	170-381
3/8 x 4	170-877	5/8 x 6-1/2	173-777
3/8 x 4-1/4 (Black oxide)	171-813	5/8 x 7-1/2	173-019
3/8 x 4-1/2	170-519	5/8 x 9-1/2	171-039
3/8 x 5	170-493		
3/8 x 5-1/2	174-196	3/4 x 1-1/2	173-507
3/8 x 5-1/2 (Full thread)	170-593	3/4 x 2	171-768
3/8 x 6	174-304	3/4 x 2 (Full thread)	170-058
3/8 x 6-1/2	171-291	3/4 x 2 (Grade 8)	171-877
3/8 x 7	172-587	3/4 x 2-1/4	171-275
		3/4 x 2-1/2	170-374
7/16 x 3/4	170-265	3/4 x 2-1/2 (Grade 8)	175-055
7/16 x 1	170-032	3/4 x 3	170-014
7/16 x 1-1/4	170-354	3/4 x 3 UNF	173-776
7/16 x 1-1/4 (Grade 8)	174-216	3/4 x 3-1/2	170-195
7/16 x 1-1/2	170-059	3/4 x 3-1/2 (Grade 8)	171-899
7/16 x 2	170-356	3/4 x 4	170-419
7/16 x 2-1/2	170-379	3/4 x 4 (Grade 8) UNF	173-579
7/16 x 3	170-270	3/4 x 4-1/2	170-846
7/16 x 5-1/2	170-377	3/4 x 4-1/2 (Grade 8)	173-039
7/16 x 6	170-378	3/4 x 4-1/2 (Grade 8) UNF	173-588
		3/4 x 5	173-508
		3/4 x 5 UNF	173-510
		3/4 x 5-1/2 (Grade 8) UNF	173-514
		3/4 x 6	171-116
		3/4 x 6 UNF	173-511
		3/4 x 6 (Grade 8)	173-231
		3/4 x 7	173-745
		3/4 x 7 UNF	173-747
		3/4 x 7-1/2	175-004
		3/4 x 8	173-509
		7/8 x 2-1/4	172-892
		7/8 x 3	172-002
		7/8 x 3-1/2	173-020
		7/8 x 4	173-299
		7/8 x 4 UNF	171-092
		7/8 x 6-1/2	173-774
		7/8 x 7	173-749
		7/8 x 7 UNF	174-097
		7/8 x 8	173-750
		7/8 x 8 UNF	173-515
		1 x 3-1/2	173-021
		1 x 4	175-119
		1 x 4 (Grade 8)	175-248
		1 x 7 UNF	173-516
		1 x 8	174-723
		1 x 8 (grade 8) UNF	173-713
		1-1/4 x 4-1/2 (grade 8)	175-003
		M8 x 16MM (Grade 8.8)	174-610
		M8 x 20MM (Grade 8.8)	175-193
		M8 x 25MM (Grade 8.8)	174-900
		M10 x 22MM (Grade 8.8)	175-016
		M10 x 25MM (Grade 8.8)	173-344
		M12 x 25MM (Grade 8.8)	171-566
		M12 x 35MM (Grade 8.8)	175-020
		M12 x 40MM (Grade 12.9)	175-190
		M12 x 45MM (Grade 10.9)	174-911
		M14 x 30MM (Grade 8.8)	173-518
		CARRIAGE BOLTS	
		1/4 x 1-1/4 (Grade 2)	170-311
		1/4 x 1-1/2 (Grade 2)	170-355
		1/4 x 2 (Grade 2)	170-299
		1/4 x 2-1/2 (Grade 2)	171-394
		1/4 x 2-3/4 (Grade 2)	170-508
		1/4 x 3	170-509
		5/16 x 1 (Grade 2)	170-370
		5/16 x 1-1/2 (Grade 2)	170-296
		5/16 x 2-1/2 (Grade 2)	171-395
		5/16 x 5-1/2 (Grade 2)	170-494
		3/8 x 3-1/2 (Grade 2)	171-283
		3/8 x 4-1/2 (Grade 2)	170-191
		3/8 x 5 (Grade 2)	170-495
		3/8 x 6-1/2 (Grade 2)	171-174
		3/8 x 8 (Grade 2)	170-297
		3/8 x 13 (Grade 2)	170-298
		3/8 x 13-1/2 (Grade 2)	170-300
		1/2 x 1-1/2 (Grade 5)	174-918
		1/2 x 6-1/2 (Grade 2)	171-098
		1/2 x 9 (Grade 2)	171-255
		5/8 x 2	175-110
		5/8 x 2-1/2 (Grade 5)	174-790

KUH N KNIGHT INC.

1501 West 7th Ave. Brodhead, WI 53520-0167

701 Cherry Ave. Greeley, Co. 80632

HARDWARE PART NUMBER LISTING CONTINUED:**PLOW BOLTS**

5/8 x 2	174-767
3/4 x 2-1/2	174-948

TRUSS HEAD BOLTS

#6-32 x 3/4	172-416
#6-32 x 1	173-079
#8-32 x 1-1/2	171-210
#10-32 x 3/4	171-604
#10-32 x 1	172-882
1/4 x 3/4	170-193
1/4 x 1	170-194
5/16 x 1	170-117

SET SCREWS (Socket Head)(Cup Point)

1/4 x 1/4	170-247
1/4 x 5/8	172-985
5/16 x 1/4	170-993
5/16 x 5/16	170-248
5/16 x 5/16 UNF	170-825
5/16 x 3/8 UNF	173-367
5/16 x 1/2	170-254
5/16 x 5/8 UNF	170-456
5/16 x 1 (Sq hd)	173-610
5/16 x 1-1/2	172-917
3/8 x 1/4	170-856
3/8 x 3/8	170-151
3/8 x 1/2	170-857
3/8 x 1/2 UNF	171-469
3/8 x 3/4	174-190
3/8 x 3/4 (Sq hd)	170-290
3/8 x 1	170-021
3/8 x 1 (Sq hd)	173-609
3/8 x 1 (Sq hd) (Dog pt)	171-551
7/16 x 7/16	170-288
7/16 x 1 (Sq hd)	170-147
1/2 x 5/8	170-249
1/2 x 1	170-438
1/2 x 1-1/4 (half dog point)	171-085
5/8 x 5/8	170-250
3/4 x 3/4 (Sq hd) (Dog pt)	170-251

HEX NUTS

#6-32	172-418
#10-32	171-606
1/4	170-125
5/16	170-119
3/8	170-007
7/16	170-062
7/16 (Grade 8) UNF	174-217
1/2	170-004
9/16	173-702
5/8	170-011
3/4	170-017
3/4 UNF	170-159
3/4 (Grade 8) UNF	173-520
7/8	171-776
1	173-022
1 UNF	173-714
1 (Grade 8)	175-247
1 (Grade 8) UNF	173-519
1-1/8 UNF	174-095
1-1/4 UNF	170-130
1-1/4 (Grade 8)	175-006
M8 x 1.25MM	172-949
M30 x 1.5MM	174-902
M50 x 1.5MM	175-200

LOCK NUTS

#6-32	174-188
#10-32	174-073
1/4	170-069
5/16	170-137
3/8	170-047
7/16	170-239
1/2	170-042
1/2 UNF	170-566
1/2 (Grade 8)	171-671
9/16	172-220
5/8	170-031
3/4	170-185
3/4 (Grade 8)	171-900
3/4 (Grade 8) UNF	173-578
7/8	173-069
7/8 UNF	171-093
1	174-928
1 UNF	170-527
M45 x 1.5MM	175-199
M50 x 1.5MM	175-197

JAM NUTS

1/4UNF	171-386
5/16	173-521
3/8	170-022
7/16	170-046
1/2	170-036
5/8	170-037
3/4	170-035
1	174-927

FLAT WASHERS

#10	171-525
1/4	170-301
1/4 Heavy	171-083
1/4 Fender	173-672
5/16	170-127
5/16 Fender	173-811
3/8	170-244
3/8 Heavy	170-302
3/8 Aluminum	173-900
7/16	170-138
1/2	170-040
1/2 (Grade 8)	172-984
9/16	173-693
5/8	170-066
5/8 (Grade 8)	173-581
3/4	170-015
7/8	173-298
7/8 Heavy	170-131
1	170-122
1-1/4	170-928

LOCK WASHERS

#6	172-417
#10	171-605
1/4	170-124
5/16	170-118
3/8	170-006
7/16	170-061
1/2	170-003
9/16	173-692
5/8	170-010
3/4	170-016
3/4 External Tooth	174-793
7/8	172-003
1	171-021
1-1/4	175-005

ZERKS

1/8 NPT	170-865
1/8 NPT-45 Deg	170-864
1/8 NPT-65 Deg	170-215
1/8 NPT-90 Deg	170-866
3/16 drive in	174-124
1/4-28	170-023
1/4-28 - 45 Deg	170-148
1/4-28 - 90 Deg	170-049
1/4 NPT	170-277
1/4 NPT - 45 Deg	174-130

COTTER PINS

1/16 x 1/2	170-992
3/32 x 3/4	170-364
1/8 x 1	170-045
1/8 x 1-1/4	170-033
1/8 x 1-1/2	170-382
5/32 x 1	170-421
5/32 x 1-1/2	170-236
5/32 x 3	170-135
3/16 x 1-1/4	170-991
3/16 x 2	170-115
1/4 x 1-1/2	170-521
1/4 x 2	170-056
1/4 x 2-1/2	173-961

ROLLER CHAIN**CONNECTOR LINKS**

#50	170-088
#50-2R	170-094
#60	170-089
#60-2R	170-095
#60H	171-102
#80	170-090
#80H	170-821
#100	170-091
#100H	171-969
#120	170-092
#140	170-093
#140H	173-552
#160	170-888

OFFSET LINKS

#50	170-096
#50-2R	170-102
#60	170-097
#60-2R	170-103
#60H	171-103
#80	170-098
#80H	170-820
#100	170-099
#100H	172-145
#120	170-100
#140	170-101
#140H	173-553
#160	170-887

ROLLER LINKS

#50	171-415
#60	171-416
#80	171-417
#80H	170-795
#100	171-418
#100H	172-146
#120	171-419
#140	171-420
#160	171-421

PART NUMBER INDEX

101-707	7	134-345	8	170-235	8,9,16
101-708	7	134-351	7	170-236	13
101-709	7	134-366	5	170-244	5
101-733	4	134-409	15	170-366	20
101-741	12	134-499	7	170-367	20
101-791	16	134-701	18	170-386	11
101-817	4	134-702	18	170-397	11
101-818	4	134-703	18	170-415	15
101-835	14	134-704	18	170-465	16
101-862	6	134-705	18	170-468	8,16
101-866	6	134-706	18	170-471	8
101-867	6	134-707	18	170-478	4
101-887	6	134-708	18	170-490	20
101-888	6	134-709	18	170-545	13
101-891	16	134-710	18	170-546	13
101-909	12	134-740	7	170-550	13
101-917	15	134-756	5	170-553	13
101-918	15	134-758	7	170-554	13
102-260	7	135-597	4	170-556	13
102-492	7	135-698	6	170-705	13
102-493	7	135-701	7	170-720	17
102-495	7	136-042	5	170-755	13
102-496	7	136-260	4	170-800	4
102-499	19	136-419	8	170-812	20
102-500	12	136-492	8	170-813	20
102-501	12	136-761	9,10	170-814	20
102-502	19	136-762	14	170-815	20
102-503	6	136-764	8	170-844	12
102-504	14	136-903	4	170-849	20
102-505	9,10	136-906	5	170-865	5,12,13
102-506	8	136-907	4	170-893	20
102-509	7	136-908	4	170-898	4
102-510	6	136-921	19	170-984	11,12
102-511	4	136-990	12	170-985	11
102-512	6	141-575	18	170-987	11
102-513	6	141-576	18	171-030	8,9
103-052	14	141-577	18	171-048	6
131-011	7	141-578	18	171-049	6
132-988	15	141-579	18	171-136	16
133-376	4	141-580	18	171-158	15
133-445	8	141-581	18	171-346	7
133-831	7	141-582	18	171-380	15
133-832	7	170-000	7	171-409	5
133-833	7	170-005	10	171-430	16
133-849	5	170-008	4	171-464	9
133-852	4	170-047	10	171-535	12
133-853	4	170-054	5	171-550	17
133-913	4	170-056	12	171-585	5
133-920	5	170-069	17	171-712	20
134-012	6,19	170-073	8	171-745	13
134-112	6	170-074	8	171-748	20
134-123	6	170-131	13	171-751	17
134-136	16	170-132	13	171-753	17
134-155	4	170-142	4,5,6	171-754	17
134-293	6	170-220	17	171-755	13,17

KUHN KNIGHT INC.

1501 West 7th Ave. Brodhead, WI 53520-0167
701 Cherry Ave. Greeley, Co. 80632

23

PART NUMBER INDEX

171-756	17	173-040	20
171-799	17	173-044	20
171-820	20	173-156	14
171-825	12	173-164	5
171-826	13	173-211	15
171-827	12,13	173-212	15
171-829	12	173-213	15
171-830	12	173-214	15
171-832	12	173-215	15
171-833	12	173-216	15
171-860	11	173-217	15
171-911	20	173-218	15
171-913	20	173-219	15
171-915	20	173-225	14
171-916	20	173-226	14
171-919	5,7	173-227	14
171-920	6	173-228	14
171-931	4	173-229	14
171-934	4	173-270	8,9
171-935	5	173-427	17
171-936	4,15	173-428	17
171-947	20	173-447	20
171-948	20	173-448	20
171-949	20	174-501	14
171-960	15	174-502	14
171-998	16	174-503	14
172-006	4	174-504	14
172-018	17	174-505	15
172-019	17	174-506	15
172-024	5	174-507	15
172-128	14	174-514	20
172-130	14	174-550	20
172-139	14	174-551	20
172-143	15	174-558	7
172-165	14	174-582	12
172-166	14	174-583	12
172-193	5	174-584	12
172-292	20	174-585	12
172-350	15	174-586	12
172-354	14	174-587	12
172-381	8	174-631	20
172-386	15	174-632	20
172-500	14	174-653	5
172-800	14	174-654	4
172-801	15	174-719	15
172-802	15	174-923	15
172-803	15	175-311	10
172-804	15	175-312	10
172-820	20	175-313	10
172-822	5	180-630	5
172-823	5	181-063	10
172-883	20		
172-926	17		
172-986	17		