



KNIGHT

TRAILER PARTS MANUAL FOR REEL AUGGIE MIXER MODEL 3020

Table Of Contents

Abbreviations	2
Using the service parts listing	3
Front end parts	4
Front end parts	5
Door parts	6
Reel and bucket guard parts	7
Auger parts	8
Slide tray parts	9
3 auger discharge parts	10
Selector valve - slide tray option	12
Selector valve - power chute option	13
Undercarriage parts (3020-088 and after)	14
Undercarriage parts (3020-087 and before)	15
PTO driveline	16
HAY MAXX system parts	17
Reel liner parts	18
Safety chain for towed equipment	19
Light kit for towed equipment (Standard Equipment)	19
Jackstand	20
Decals	21
Paint	21
Hardware part number listing	22
Part number index	24

Catalog Part Number 005941

Unit Serial Number _____

Operator Instruction Manual for this unit: 005798

Abbreviations

Assy	Assembly
A/R	As Required
B	Bolt
Brg	Bearing
BSN	Before Serial Number
Btm	Bottom
C-Bolt	Carriage Bolt
Cttr	Cotter
CV	Constant Velocity
Deg	Degree
Dia	Diameter
ea	Each
eq or Equiv	Equivalent
Fln	Flanged Lock Nut
Fw	Flat Washer
Ga	Gauge
Gr or Grd	Grade
Hd	Head
Hfw	Heavy Flat Washer
Hyd	Hydraulic
ID	Inside Diameter
Ill or Illus	Illustration
Ind	Indicator
Jn	Jam Nut
Kw	Keyway
LH	Left Hand
Ln	Lock Nut
Lw	Lock Washer
Mtg Hrd	Mounting Hardware
NC	National Coarse
NF	National Fine
NLA	No Longer Available
NPT	National Pipe Thread
OD	Outside Diameter
Pc(s)	Piece(s)
PD	Pitch Diameter
PTO	Power Takeoff (shaft)
Qty	Quantity
RH	Right Hand
SN	Serial Number
SHCS	Socket Head Cap Screw
Spk, or Spkt or Sprkt	Sprocket
Sq	Square
SS	Stainless Steel
SSB	Stainless Steel Bolt
St	Straight
Std	Standard
STS	Self Tapping Screw
UASN	Used After Serial Number
UBSN	Used Before Serial Number
W	With
W/O	With Out

Using the service parts listing

This listing uses a number indentation system to specify the parts of an assembly. Any number which is indented to the right, indicates that it is a component of the item to the upper left. Example:

<u>Part no</u>	<u>Qty</u>	<u>Description</u>
102-AAA	#	Assembly A
102-BBB	#	Sub-Assembly B (Component of A)
140-xxx	#	Sub-Component of B
140-xxx	#	Sub-Component of B
102-CCC	#	Sub-Assembly C (Component of A)
etc.		

Using this system, the subassemblies and their components are included if an **Assembly** is ordered. Similarly, the components of a subassemblies are included if a subassembly is ordered.

The quantity (Qty) associated with an assembly, represents the number of times an assembly could be shown in the drawing. The subassembly quantity however, is the number of times a subassembly is used to build one assembly. Similarly, the component quantity refers to the number of times a given component is found in one subassembly.

MODEL AND SERIAL NUMBER INFORMATION is located near the front left hand corner (Fig. A). The model number, serial number and part number should be known when asking service personnel for parts.

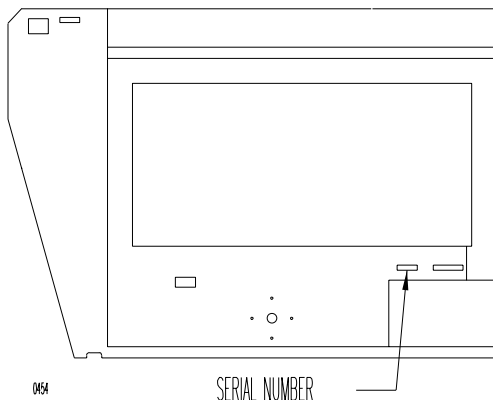


Fig. A

The serial number may consist of a number, or a number with a letter prefix. When referring to serial number breaks in the text of this manual, a serial number with a prefix will have been manufactured after a serial number without a prefix (A001 made after 0123). Likewise, a higher prefix letter would indicate manufacture after a lower prefix letter (B001 made after A123). Therefore, if the text refers to units manufactured after serial number B123, this would include “B” series numbers greater than 123, and all numbers with a higher letter prefix.

If you cannot find the part you need, be as descriptive as possible when placing an order:

Sprockets: give the bore size, number of teeth, and size of keyway.

Roller chain: give the size of chain (stamped on the side of each link) and number of links.

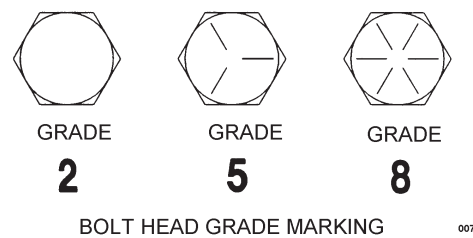
Shafting: give the diameter, length, and quantity and size of keyways.

Hardware is generally not included with parts. If you need any hardware, check the size, the length, and the grade (Fig. B), then check the hardware list in this manual for the part numbers.

All hex head bolts are grade 5, and nuts are grade 5 unless otherwise stated.

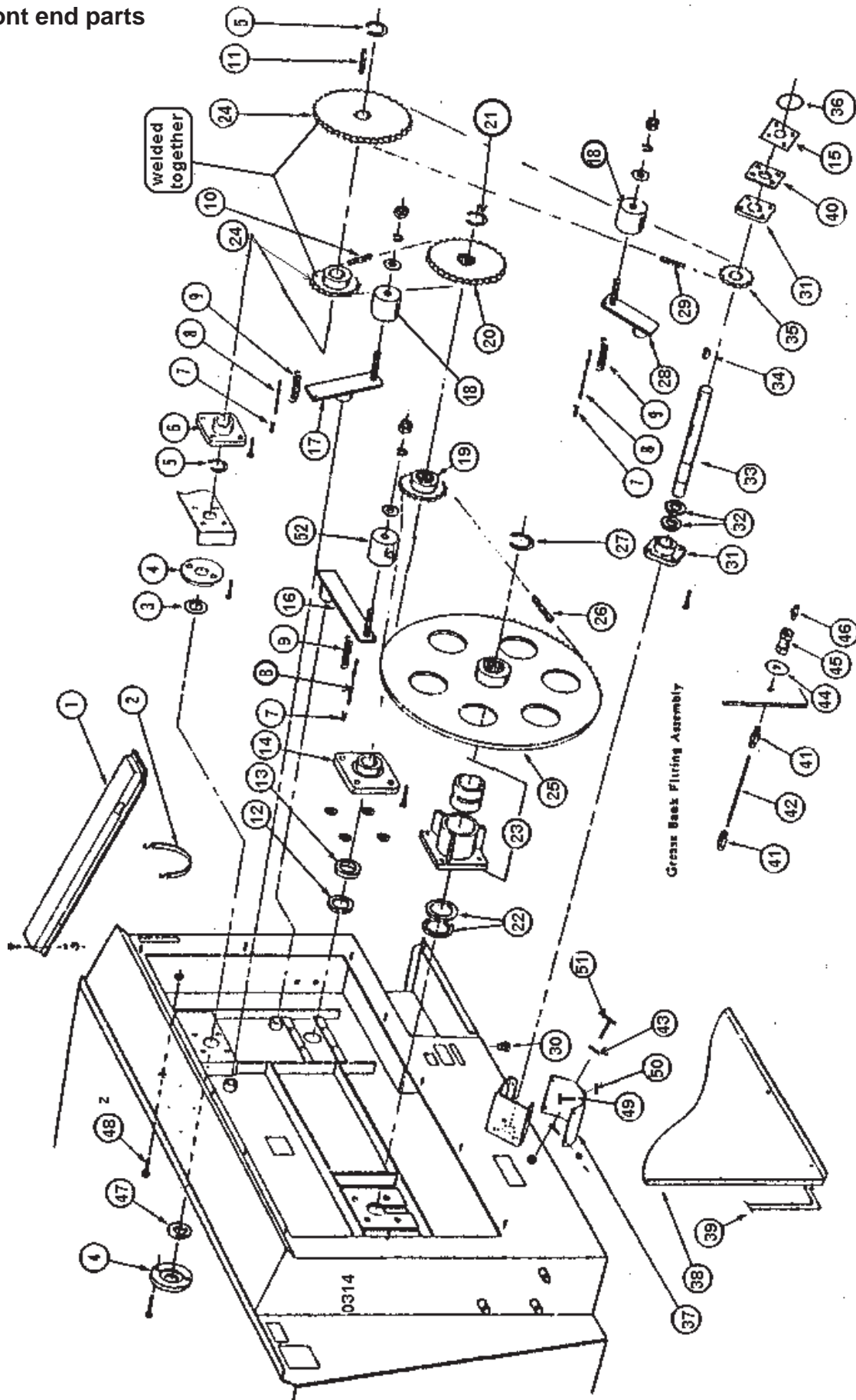
The hardware listing also includes zerks, cotter pins, set screws, and roller chain links.

The illustrations in this manual are meant to be used only as a guide for identifying parts and locating their relative positions.



0072

Front end parts

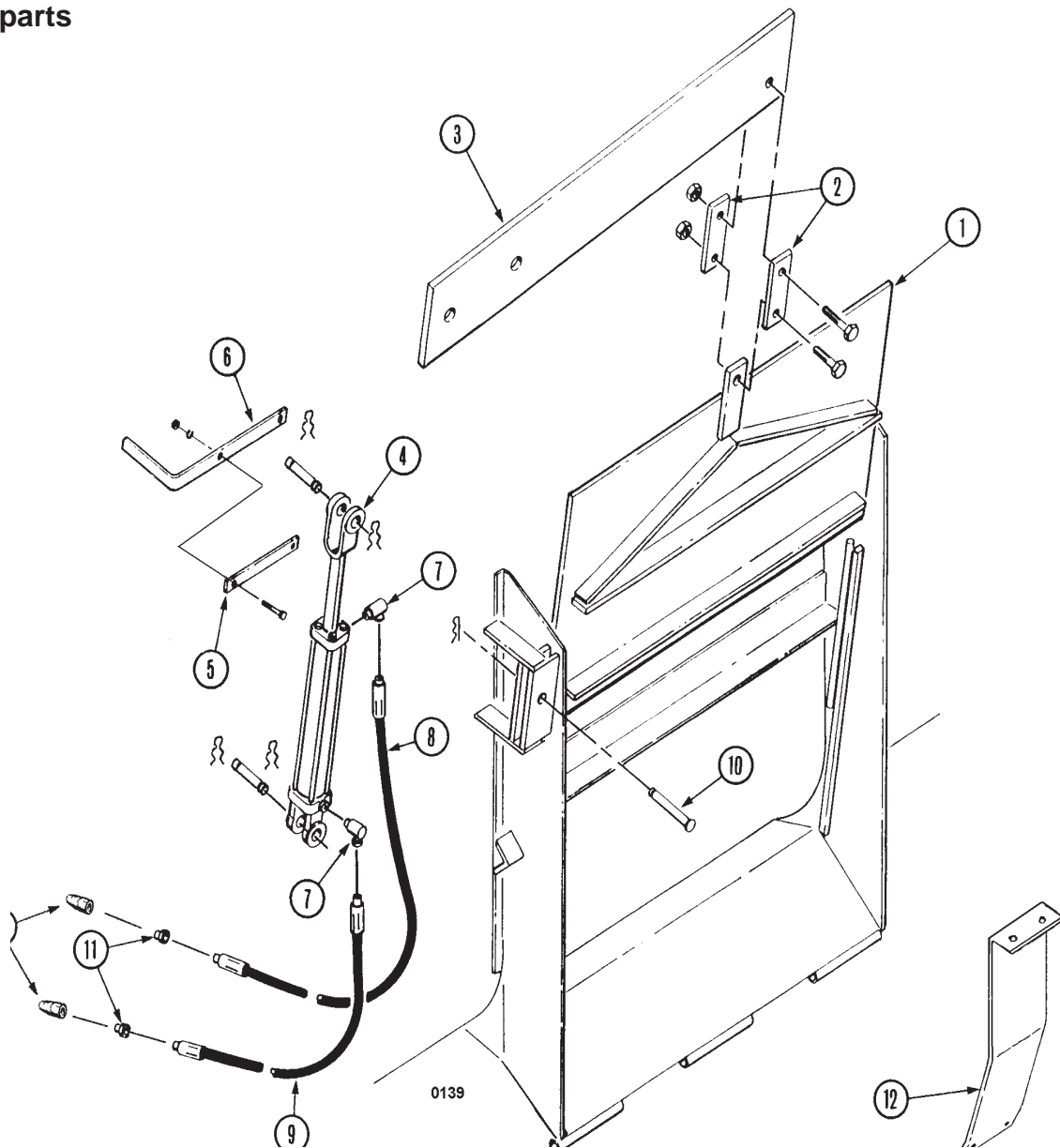


Front end parts

REF	PART NO	QTY	DESCRIPTION
1	101-733	1	Indicator Mount Assembly, Mtg Hrd: 3/8" x 1" B, Lw, Nut (4ea)
2	171-936	1	Hydraulic Hose Retaining Strap
3	133-376	1	Seal, Plastic; 2" ID x 3 1/2" OD x 5/16 Thk
4	133-852	2	Seal Retaining Plate; Mtg Hrd: 5/16" x 1 1/4" B FLN (2ea)
5	170-142	2	Snap Ring; 2" (Tru-Arc # 5100-200)
6	170-008	1	Bearing; 2", Mtg Hrd: 5/8" x 1 3/4" B, Lw,Nut (4ea)
7	170-800	3	Clinch Pin
8	170-478	3	Machine Chain; #4 x 12 Link (7")
9	172-006	3	Spring, Extension
10	170-108	1	Roller Chain; 80-1-70 Pitch, W/Connector Link
11	170-898	1	Key; 1/2" Sq x 2 1/2"
12	133-277	1	Seal, Plastic; 2 1/2" ID x 3 1/2" OD x 5/16 Thk
13	133-903	1	Seal Spacer Pipe; 2 1/2" ID x 1" Long
14	170-053	1	Bearing; 2 1/2", Mtg Hrd: 5/8" x 3" B, Lw,Fw,Nut (4ea)
15	136-260	1	Seal Retainer Plate
16	101-761	1	Chain Tightener Arm (#100)
17	101-818	1	Chain Tightener Arm (#80)
18	134-155	2	Tightener Block, Mtg Hrd: 1/2" x 2 3/4" B, Fw, Lw, Nut (1ea)
19	133-914	1	Sprocket; 100-B-13, 2 1/2" Splined Bore
20	133-915	1	Sprocket; 80-B-42, 2 1/2" Splined Bore
21	170-152	1	Snap Ring; 2 1/2" (Tru-Arc 5100-250)
22	135-598	2	Seal Washer, Plastic; 1/8 x 3 1/2 x 4 3/4
23	102-249	1	Bearing Assembly; Mtg Hrd: 5/8" x 1 3/4" B, Lw, Nut (4ea)
	135-662	1	Plastic Sleeve; 3 1/2 x 4 1/4 x 3 7/8 Lg
24	136-233	1	Sprocket; 2" Bore
25	135-654	1	Sprocket; 100-B-82, 3 1/2" Splined Bore
26	171-931	1	Roller Chain; 100H-1-110 Pitch, W/Connector Link
27	171-934	1	Snap Ring; 3 1/2" (Tru-Arc # 5100-300)
28	101-819	1	Chain Tightener Arm (#60)
29	171-951	1	Roller Chain; 60H-1-166 Pitch, W/Connector Link
30	171-919	1	Drain Plug; 1 1/4" PVC
31	171-585	2	Bearing; 1 3/8", Mtg Hrd: 1/2" x 1 1/2" B, LW, FW Nut (3ea)- Rear Bearing 1/2" X 1 3/4" B, LW, NUT (4 ea)- Front Bearing
32	172-193	2	Locking Collar; 1 3/8"
33	136-042	1	Input Shaft; 1 3/8" x 15 3/4" (6 Spline)
34	171-409	1	Key; 3/8" x 1 1/4"
35	133-918	1	Sprocket; 60-B-14, 1 3/8" Bore, 3/8" Keyway
36	173-164	1	Seal; Lip C/R # 13536
37	133-920	1	Belt; PTO Driveline Shield (1/8" x 9" x 16") Mtg Hrd: 5/16" x 3/4" B, FLN (4ea)
38	133-849	1	Safety Shield; Front Drive, Mtg Hrd: 3/8" NC Wing Nut(171-929), Fw (12ea)
39	171-935	15*	Front Shield Gasket, 3/8" x 3/4" Closed Cell Foam
40	134-366	1	Bearing Spacer
41	172-822	10	Compression Fitting; 1/8" NPT, Male
42	180-630	8*	Nylon Tube; 3/16 OD (requires trimming)
43	172-884	1	Plastic Washer
44	170-244	5	3/8" Flat Washer
45	172-024	5	Pipe Coupling; 1/8" NPT
46	170-865	5	Zerk Fitting; 1/8" NPT
47	134-756	1	Washer Seal, Plastic; 1/8" x 2" x 3 3/8"
48	170-054	1	Bolt, 3/8" x 1 1/4, (2) Fw, Ln
49	172-986	3	Shear Bolt 1/4" X 2" Grd 5
50	170-069	3	Lock Nut; 1/4" Grd 5
51	170-149	1	Bolt 1/2" x 1" (oil level check)
52	134-086	1	Tightener Block; Mtg. Hrd: 1/2 x 2 3/4 Bolt, Fw, Lw & Nut (1ea)

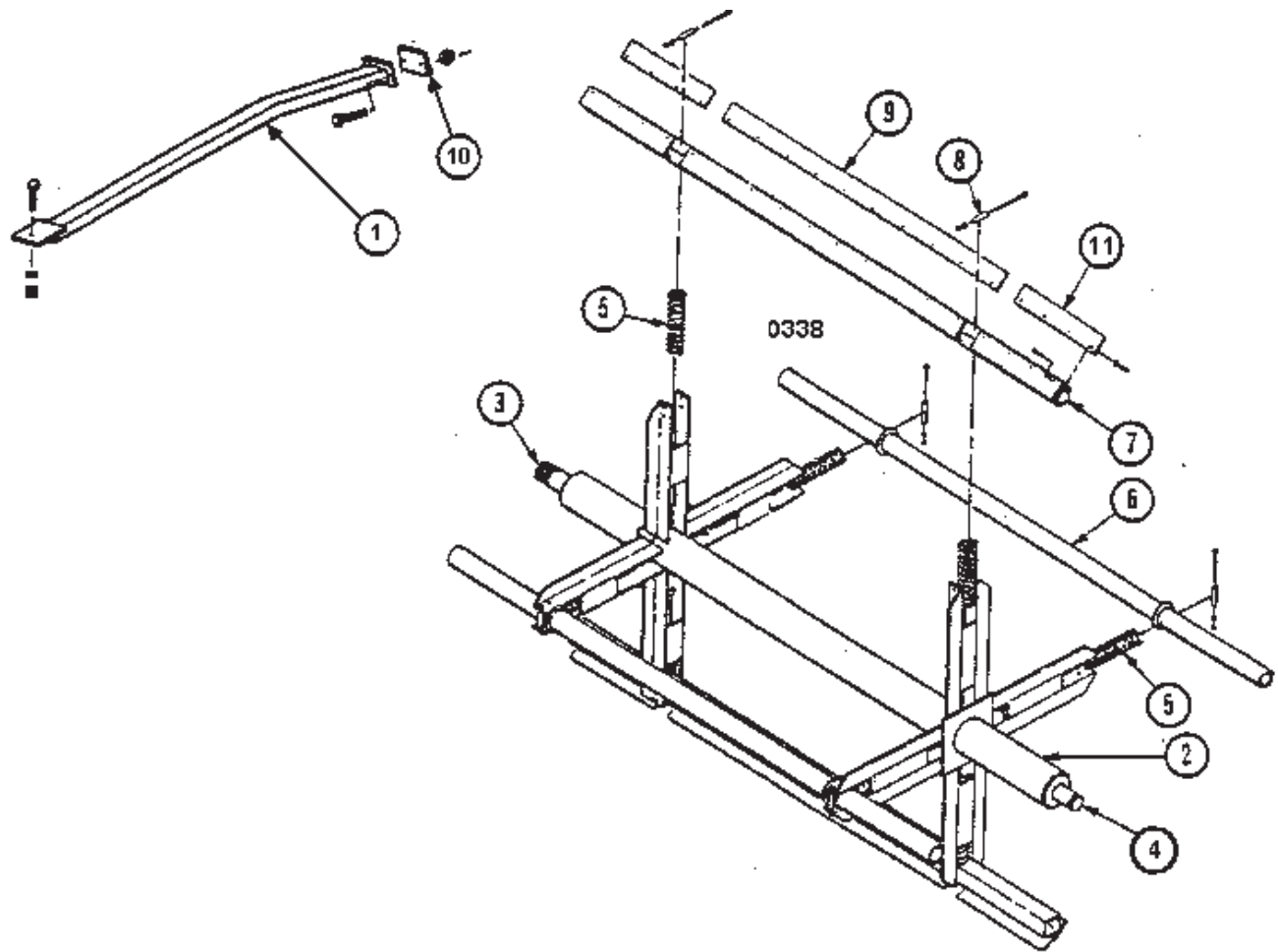
* Sold by the linear foot

Door parts



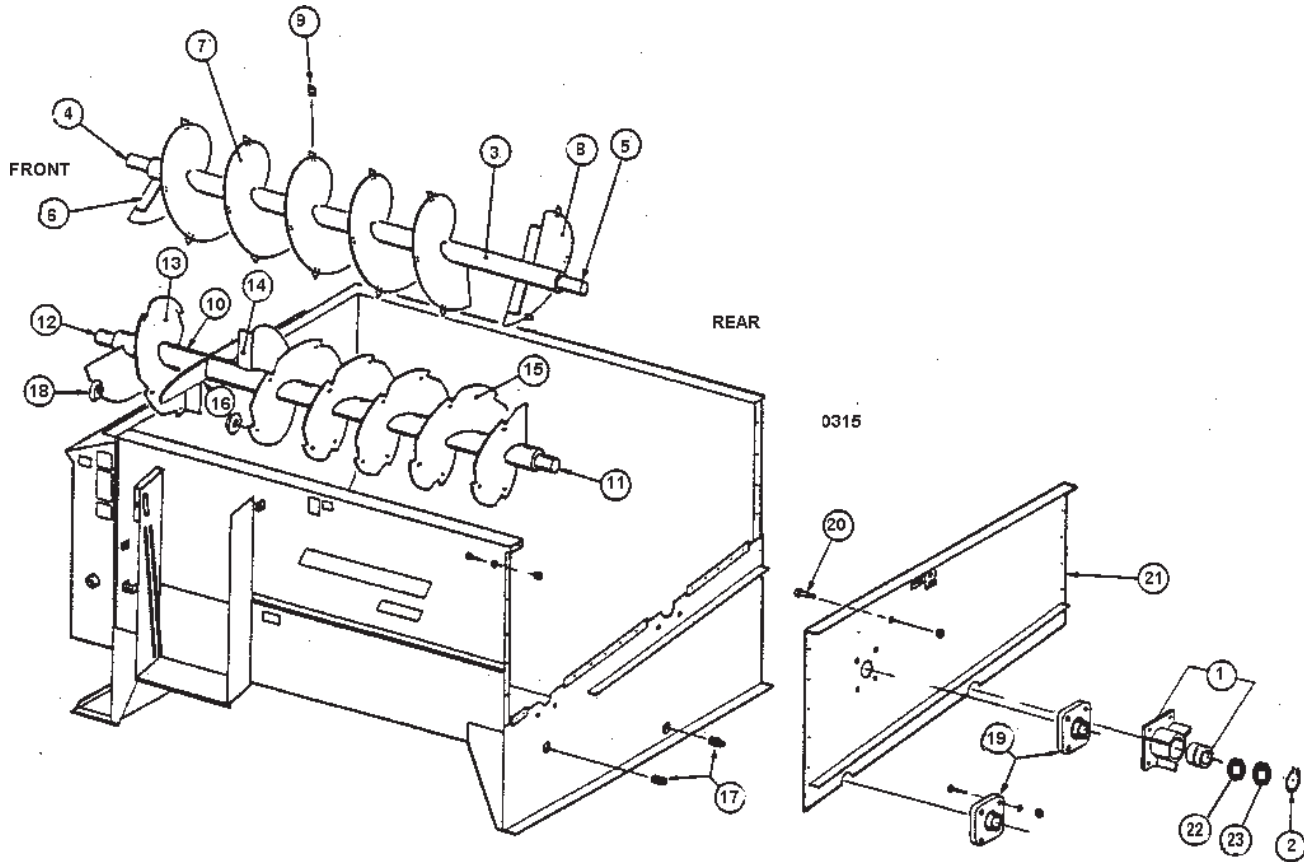
REF	PART NO	QTY	DESCRIPTION
1	102-414	1	Door Assembly
2	136-363	2	Door Linkage Bar; 3/8" x 2" x 6"
3	136-360	1	Door Pivot Bar; 5/8" x 4" x 31-15/16"
4	173-270	1	Hyd Cylinder; 2" x 8" (Seal Kit #170-075)
5	136-419	1	Door Gauge Mount; 1/8" x 5/8" x 3-3/4"
6	136-492	1	Door Gauge; 1/8" x 5/8" x 19-1/2" Mtg Hrd: 1/4" x 1" Pan Head B, LW & Nut (2 ea)
7	171-030	2	Swivel Adapter; 3/8"- 90 Degrees
8	170-471	1	Hyd Hose; 1/4" x 170" Overall Length
9	170-468	1	Hyd Hose; 1/4" x 162" Overall Length
10	170-073	1	Pin (1" Dia) For Door Pivot Bar (133-360) Secures With 170-074 Hairpin Clip
11	170-235	2	Reducer Bushing; 1/2" To 3/8"
12	136-326	A/R	Door Flow Control Plate; Mtg Hrd: 5/16" x 1-1/4" B, Lw, N (2ea) 5/16" x 1" B, Lw, N (2ea)
13	175-536	2	Pioneer Quick Coupler

Reel and bucket guard parts



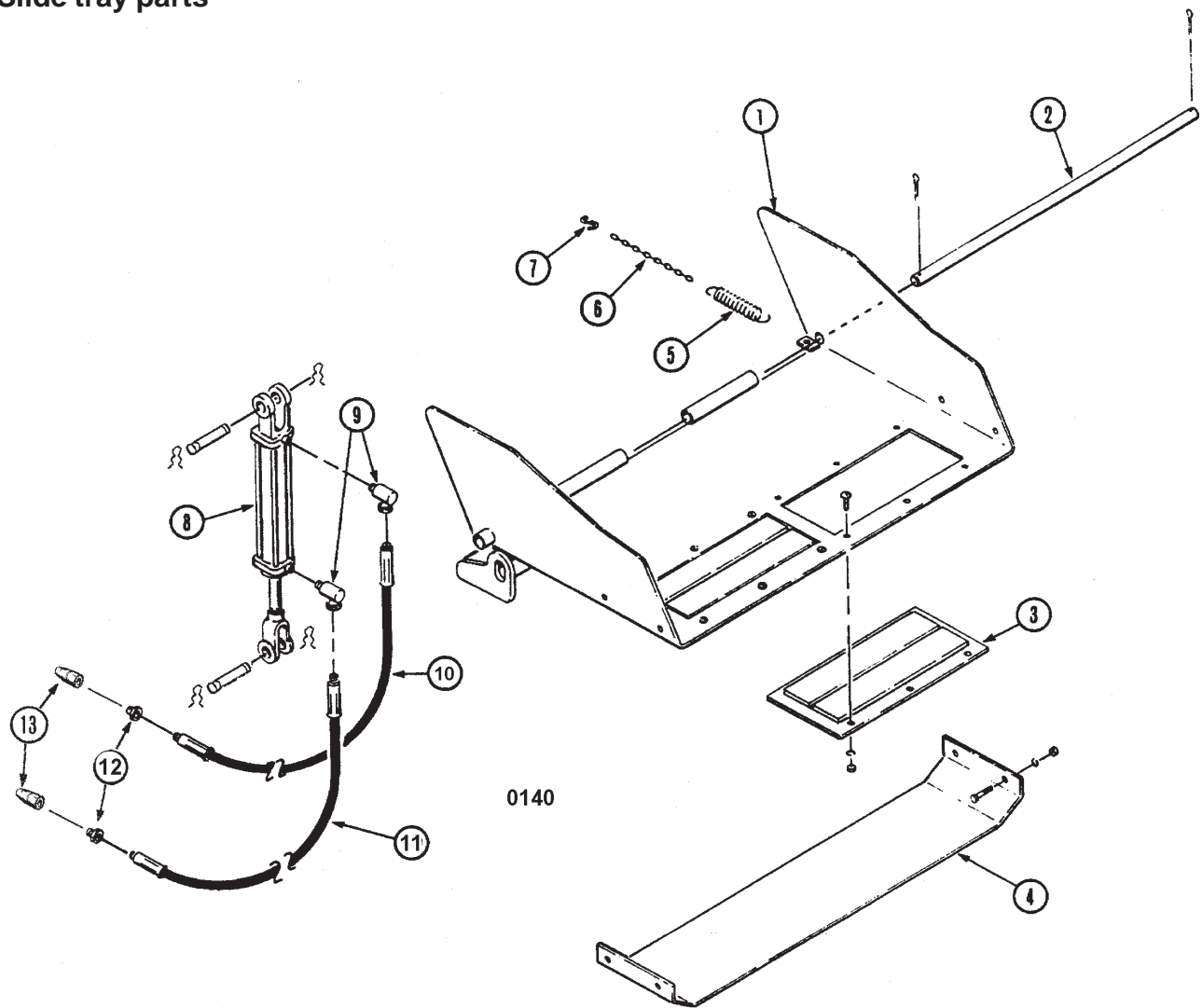
REF	PART NO	QTY	DESCRIPTION
1	102-009	2	Bucket Guard Assembly; (option) Mtg Hrd: 3/8" x 1 1/4" B, Lw, Nut (3ea)
2	102-243	1	Reel Weldment
3	102-247	1	Front Plug Assembly
4	102-251	1	Rear Plug Assembly
5	171-920	8	Spring, Compression
6	102-544	2	Reel Cross Tube; Mtg Hrd: 1/2" x 5" Bolt, Lw, Nut (2ea)
7	102-246	2	Wiper Tube Assembly; Mtg Hrd: 1/2" x 5" Bolt, Lw, Nut (2ea)
8	135-698	8	Retaining Sleeve
9	135-676	2	Plastic Wiper Blade (<i>long</i>); Mtg Hrd: 1/4" x 7/8" B, (171-083 Heavy Washer), Lw, Nut (10ea)
10	134-012	2	Bucket Guard Mount
11	135-675	4	Plastic Wiper Blade (<i>short</i>); Mtg Hrd: 1/4" x 7/8" Bolt, (171-083 Heavy Washer), Lw, Nut (4ea)

Auger parts



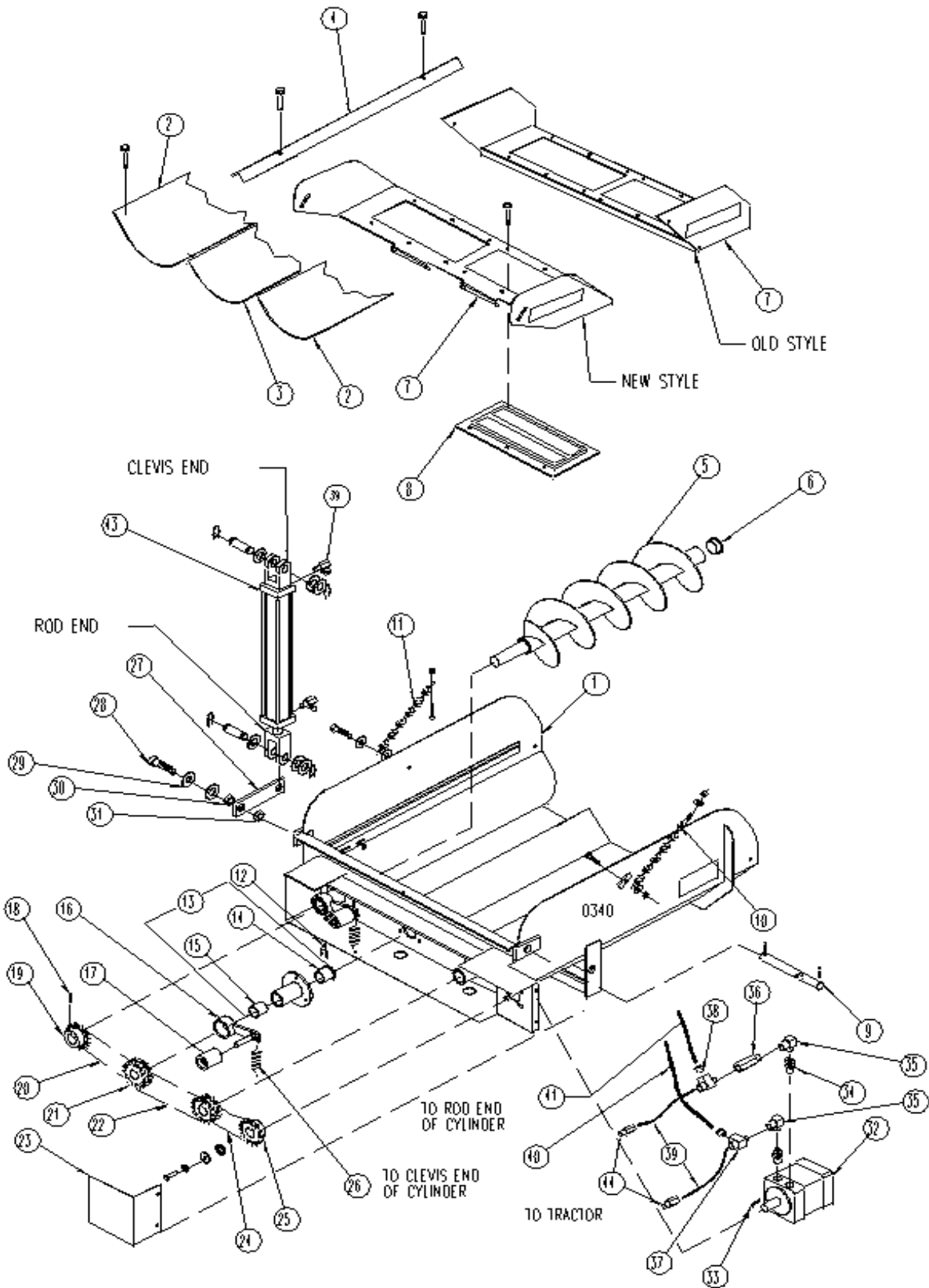
REF	PART NO	QTY	DESCRIPTION
1	102-260	1	Bearing Assembly; Mtg Hrd: 5/8" x 1 3/4" B, Lw,Nut
	135-701	1	Plastic Sleeve; 2" x 2 1/2" x 2" Lg
2	170-142	1	Snap Ring; 2" (Tru-Arc 5100-200)
3	102-015	1	Upper Auger Assembly
4	101-731	1	Front Plug Assembly
5	101-708	1	Rear Plug Assembly
6	131-011	6	Flighting Brace
7	134-741	2	Flight; 3/8" - 4" - 10" - 14" - 53" RH
8	133-833	1	Flight; 1/4" - 4" - 14" - 14" x 7" LH
9	174-558	52	Upper Auger Knife(Qty. may vary) Mtg Hrd: 5/16" x 3/4" Bolt, LW & Nut (2 ea.)
10	101-728	1	Lower Auger Assembly
11	101-708	1	Rear, Plug Assembly
12	101-869	1	Front, Plug Assembly
13	133-832	1	Flight; 3/8" - 4" - 16" - 16" RH
14	134-758	4	Flighting Support Brace
15	133-831	6	Flight; 3/8" - 4" - 16" - 16" LH
16	134-499	2	Paddle
17	171-919	2	Drain Plug; 1 1/4" PVC
18	134-351	18	Lower Auger Knife; (Qty. may vary); Mtg Hrd: 3/8" x 1" Bolt, Lw, Nut
19	170-000	2	Bearing; 1 3/8" 4 Bolt Flanged, Mtg Hrd: 1/2" x 1 1/2" B, Lw, Nut (4ea)
20	170-373	1	Bolt; 1/2 x 1 1/4" (2) Fw, Lw & Nut
21	Contact Factory	1	Rear Panel Assembly; (Uses upper portion of 101-720) Mtg Hrd: 5/16" x 1" B, Fw, FLn (21ea)
22	171-048	A/R	Washer, Special 2" x 3" x 3/32"
23	171-049	A/R	Washer, Special 2" x 3" x 1/8"

Slide tray parts



REF	PART NO	QTY	DESCRIPTION
1	102-430	1	Slide Tray Assembly (See Decal Section For Decals)
2	136-444	1	Pivot Rod, Mtg Hrd: 170-115 cotter pin; (2ea)
3	171-937	2	Magnet; Mtg Hrd: 1/4" x 3/4" Truss Head Bolt, Fw, Lw, Nut (6ea Magnet)
4	136-378	1	Skid Plate; Mtg Hrd: 1/4" x 3/4" Pan Head Screw, Lw, Nut (4ea)
5	172-005	1	Spring; 6" x 1" O.D.
6	170-478	1	Machine Chain; #4 x 12 links
7	170-947	1	"S" Hook
8	173-270	1	Hydraulic Cylinder; 2" x 8" (Seal Kit #170-075)
9	171-030	2	Swivel Connector; 3/8" - 90 Degree
10	170-471	1	Hydraulic Hose; 1/4" x 170"
11	170-468	1	Hydraulic Hose; 1/4" x 162"
12	170-235	2	Fitting, Reducer; 1/2" to 3/8"
13	175-536	2	Pioneer Quick Coupler

3 auger discharge parts



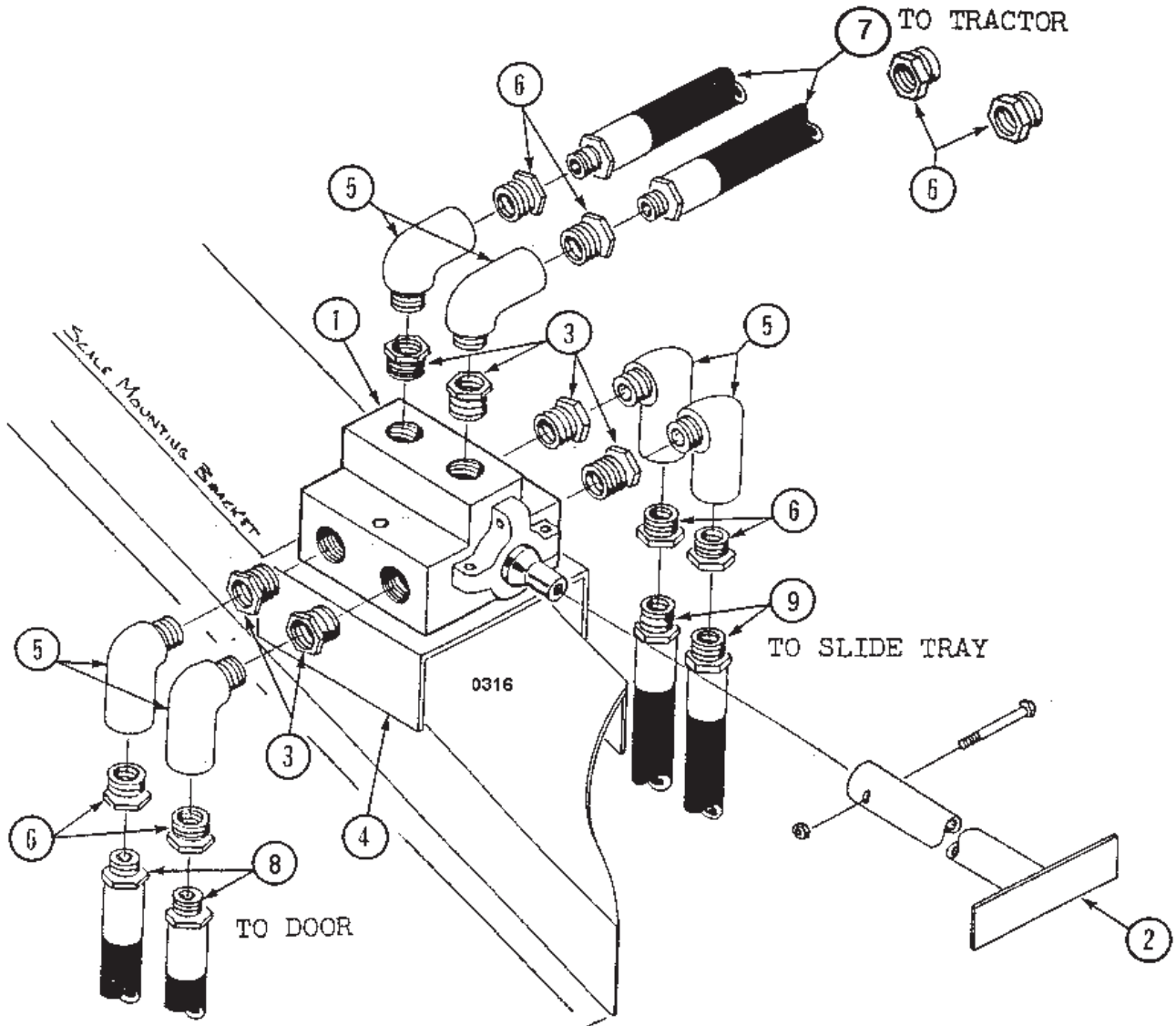
3 auger discharge parts

REF	PART NO	QTY	DESCRIPTION
	103-781	1	Complete Chute Assembly 3'
	103-755	1	Complete Chute Assembly 2'
1	103-780	1	Chute Weldment 3'
	103-758	1	Chute Weldment 2'
2	133-942	2	Plastic Chute Liner,3'- Side; Mtg Hrd:1/4" x 3/4" Truss Head Bolt, Lw,Nut (2ea)
	140-937	2	Plastic Chute Liner,2'- Side; Mtg Hrd:1/4" x 3/4" Truss Head Bolt, Lw,Nut (2ea)
3	133-943	1	Plastic Chute Liner,3'- Center;Mtg Hrd:1/4" x 3/4" Truss Head Bolt,Lw,Nut(2ea)
	140-938	1	Plastic Chute Liner,2' -Center;Mtg Hrd:1/4" x 3/4" Truss Head Bolt,Lw,Nut(2ea)
4	140-897	2	Liner Hold Down;3'- Mtg. Hrd: 1/2" Jam Nut, 5/16"x1 1/2" C-Bolt, Fw,Ln (2ea)
	140-933	2	Liner Hold Down;2'- Mtg. Hrd: 1/2" Jam Nut, 5/16"x1 1/2" C-Bolt, Fw,Ln (2ea)
5	101-736	3	Auger Assembly, 3'
	103-756	3	Auger Assembly, 2'
6	171-186	3	Plastic Cap Plug; #16
7	103-702 ^A	1	Tip-off Assembly; Mtg. Hrd: 5/16" x 1" B, Lw, Nut (2ea)
	103-737 ^A	1	Tip-off Assembly; Mtg. Hrd: 5/16" x 1" B, Lw, Nut (2ea)
	170-056 ^A	2	Cotter Pin, 1/4" x 2" (not shown)
8	171-937	2	Magnet; Mtg. Hrd: 1/4" x 3/4" Truss Head Bolt, Fw, Lw, Nut (6ea)
9	136-444	1	Chute Pivot Rod, 7/8" x 39 1/2"; Mtg. Hrd: 170-115 Cotter Pin (2ea)
10	103-918	1	Chute Restraint Chain Assy
			Mtg Hrd: 5/16" x 1" Truss Head B,Fw,Lw,Nut, 3/8"Fw, Ln
11	141-608	1	Chain; 5/0 Coil x 27 Link; Mtg. Hrd: 5/16" x 1" B, Lw, Nut and 5/16" x 1" Truss Head Bolt, Fw, (3ea), Fln (1ea)
12	171-265	A/R	Shim; .017" Thick
13	101-227	3	Auger Bearing Assembly; 3/8" x 1 1/4" Bolt, Lw, Nut (3ea)
14	171-260	1	Bronze Bushing ; 1 3/8" ID Flanged
15	171-259	1	Bronze Bushing; 1 3/8" ID
16	101-231	2	Chain Tightener Arm
17	134-395	2	Poly Block, 2" x 2 1/2"; Mtg Hrd: 5/8" Lw & Jam Nut
18	171-414	3	Roll Pin; 5/16" x 2 1/2"
19	140-902 ^B	1	Sprocket; 50-B-15, 1 3/8" Bore; Mtg. Hrd: 1/4" x 2 1/2" Roll Pin
20	174-886	1	Roller Chain; 50-1-54 Pitch
21	134-390	2	Sprocket; 50-2R-18 1 3/8" Bore; Mtg. Hrd: 1/4" x 2 1/2" Roll Pin
22	171-932	1	Roller Chain; 50-1-56 Pitch
23	140-896	1	Motor Drive Shield; Mtg. Hrd: 5/16" x 3/4" Bolt, Lw, Nut (2ea)
	134-394 ^A	1	Motor Drive Shield; Mtg. Hrd: 5/16" x 3/4" Bolt, Lw, Nut (2ea)
24	171-008	1	Roller Chain; 50-1-47 Pitch
25	134-389	1	Sprocket; 50-B-18, 1" Bore 1/4" Kw (including: 170-254 set screw)
26	170-110	2	Extension Spring
27	133-952	1	Chute Cylinder Linkage Bar; Mtg. Hrd: 170-074 Hair Pin Clip (2)
28	173-021	1	Bolt, 1" X 3 1/2" Hex Head
29	170-122	2	Spacer Washer; 1", SAE Flat
30	174-927	1	Nut, 1" Hex Jam
31	174-928	1	Nut, 1" Hex Lock
32	171-666	1	Hydraulic Motor; 12cu. in. (Seal Kit# 171-257) Mtg Hrd: 3/8"x7/8" B,Lw (4ea)
33	171-883	1	Key; 1/4" x 1/4" x 1"
34	171-668	2	Straight Thread Adapter; 7/8" M-ORB x 1/2" F-NPSM Sw.
35	171-136	2	Street Elbow; 1/2" x 90°
36	171-151	1	Line Check Valve; 1/2"
37	170-859	2	Adapter,Tee: 1/2" NPTF M x 1/2" NPTF Fx 1/2" NPTF
38	170-235	2	Adapter, Straight, 1/2" NPTF M x 3/8" NPTF F
39	171-330	2	Hydraulic Hose; 1/2" X 168"
40	171-427	1	Hydraulic Hose; 1/4" X 82"
41	171-940	1	Hydraulic Hose; 1/4" X 64"
42	171-030	4	Swivel Connector; 90°
43	173-220	1	Cylinder; 2" dia x 18" (seal kit 170-075)
44	175-536	2	Pioneer Quick Coupler

^A Tip-off and motor drive shield are not interchangeable with earlier models.

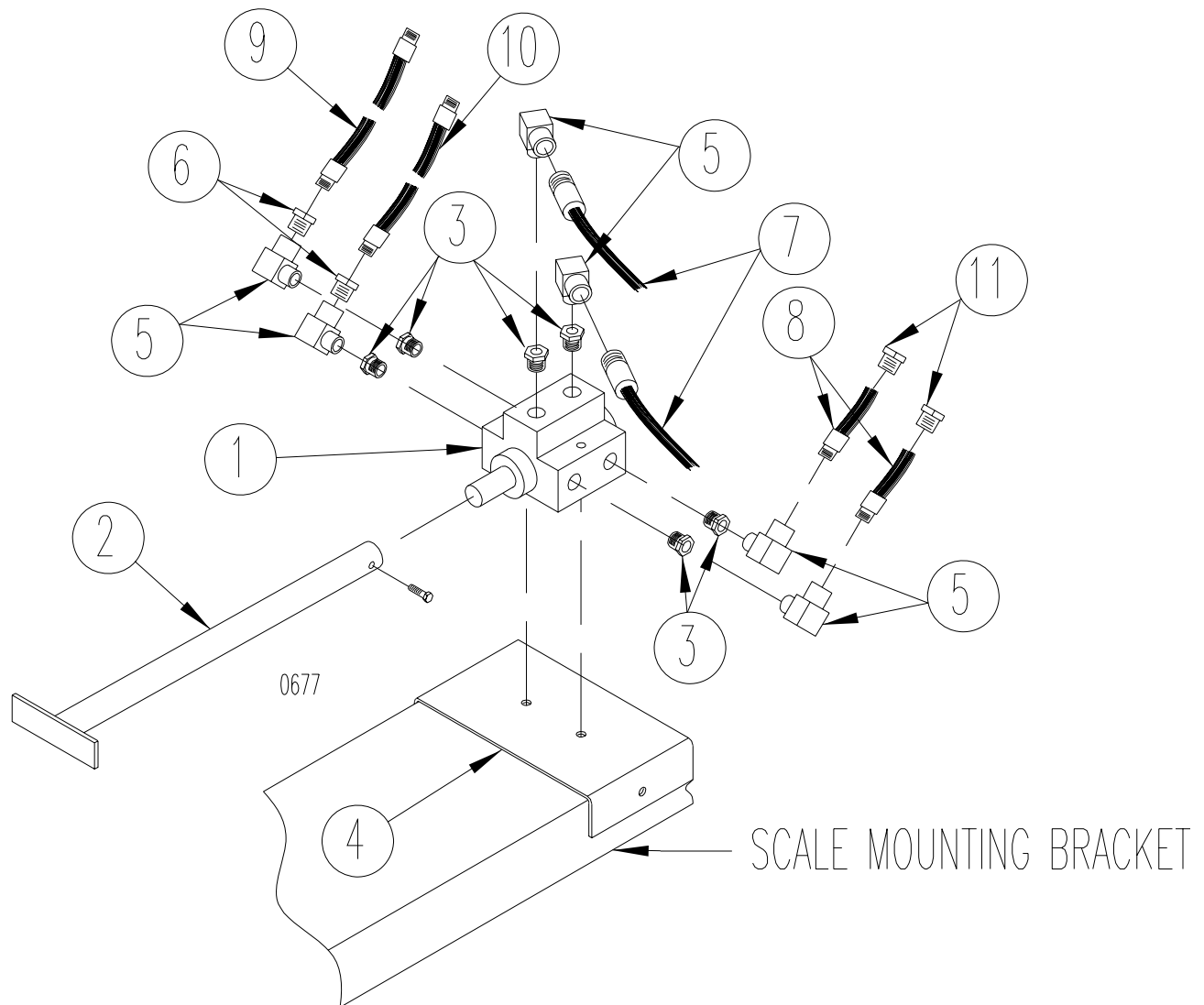
^B Older 3 auger discharge chutes used an 50-B-18 sprocket P/N 132-701.

Selector valve - slide tray option



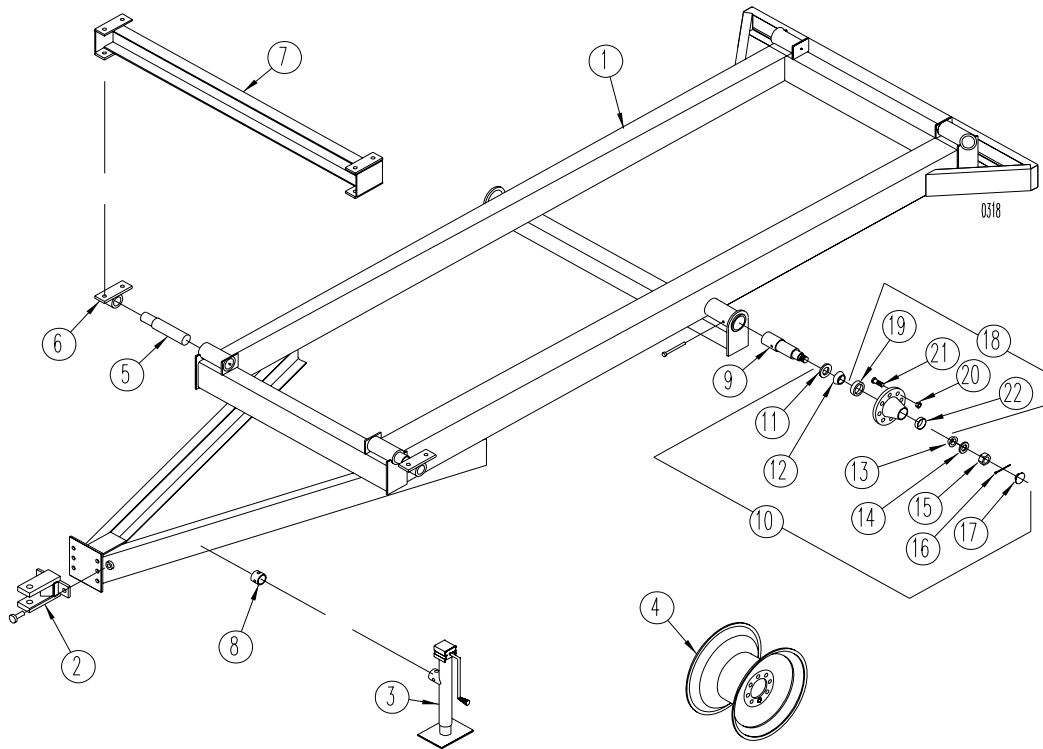
REF	PART NO	QTY	DESCRIPTION
1	101-891	1	Selector Valve Assy (Seal Kit #172-784) Mtg Hrd: 3/8" x 3" B, FW, LW, & Nut (2ea)
2	101-791	1	Control Handle Assy Mtg Hrd: 1/4" x 1-1/2" Bolt & LN
3	171-430	6	Connector; Reducer 3/4" To 1/2"
4	134-136	1	Mounting Bracket; Mtg Hrd; 5/16" x 3/4" Bolt, LW, Nut (4 ea)
5	171-136	6	Connector; Elbow 1/2" - 90 Degree
6	170-235	6	Connector; Reducer 1/2" To 3/8"
7	170-465	2	Hyd Hose; 1/4" x 127" Long 3/8" Ends
8	170-465	2	Hyd Hose; 1/4" x 127" Long 3/8" Ends
9	170-465	2	Hyd Hose; 1/4" x 127" Long 3/8" Ends

Selector valve - power chute option



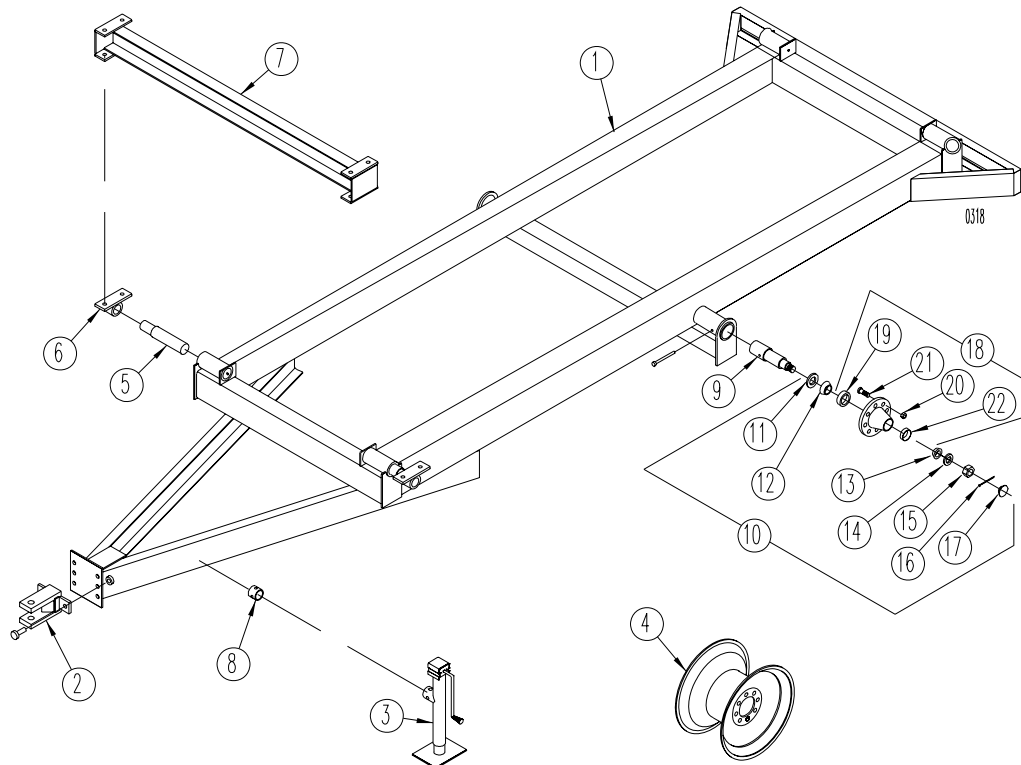
REF	PART NO	QTY	DESCRIPTION
1	101-891	1	Selector Valve Assy (Seal Kit #172-784) Mtg Hrd: 3/8" x 3" B, FW, LW, Nut (2 ea)
2	101-791	1	Control Handle Assy; Mtg Hrd: 1/4" x 1-1/2" Bolt & LN
3	171-430	6	Connector, Reducer 3/4" to 1/2"
4	134-136	1	Mounting Bracket; Mtg Hrd: 5/16" x 3/4" Bolt, LW, Nut (4 ea)
5	171-136	6	Connector; Elbow 1/2" - 90 Degree
6	170-235	2	Connector; Reducer 1/2" To 3/8"
7	171-426	2	Hyd Hose; 1/2" x 93" Long 1/2" Ends, To Tractor
8	171-189	2	Hyd Hose; 1/2" x 108" Long 1/2" Ends, To Chute
9	171-998	1	Hyd Hose; 1/4" x 118" Long 3/8" Ends, To Door
10	170-465	1	Hyd Hose; 1/4" x 127" Long 3/8" Ends, To Door
11	170-513	2	Connector; Swivel 1/2" Straight

Undercarriage parts (3020-088 and after)



REF	PART NO	QTY	DESCRIPTION
1	102-514	1	Undercarriage Weldment
2	101-741	1	Clevis Hitch; Mtg Hrd: 3/4" x 2" Bolt, (grade8) Ln, (grade 8)(4 ea)
3	170-984	1	Jackstand (refer to jackstand parts pages for parts breakdown)
4	172-285	2	Wheel; 22 1/2 x 8 1/4- 8 Hole - 3/8 Positive Offset (optional)
	174-580	2	Wheel; 16.1 x 11 - 8 Hole 3/8 Positive Offset (Option)
5	172-139	4	Weigh Bar; 1-7/8" Dia
	173-229	4	Weigh Bar; 1-7/8" Dia; Mtg Hrd:5/8" x 3-1/2" Bolt, Ln(1ea)
	133-976	4	Dummy Weigh Bar Mount (For Units Without Scales)
			Mtg Hrd To Spool: 3/8" x 2-1/2" Bolt & LN (1 ea)
			Mtg Hrd To Endstop: 3/8" x 3-1/2" Bolt & LN
6	101-742	4	Weigh Bar Mount Spool, Mtg Hrd To Unit: 5/8" x 1-3/4" B, FW & LN (2ea)
	101-909	2	Riser Assembly; Mtg Hrd: 5/8" x 1-3/4" Bolt, & LN (8 ea) (optional)
8	170-985	1	Mount Tube (Weld-on)
9	136-990	2	Spindle; 2 1/2" x 14" Mtg Hrd: 3/8" x 4" Bolt & LN
10	174-587	2	8-Bolt Hub Assembly
11	174-585	1	Grease Seal (C/R 25091) or Equiv.
12	174-584	1	Inside Bearing Cone 2.165 (Timken # JLM506849) or Equiv.
13	171-829	1	Outside Bearing Cone 1.625 (Timken # LM501349) or Equiv.
14	171-832	1	Flat Washer, 3"
15	171-833	1	Castle Nut; 1" NF Wheel Nut
16	170-056	1	Cotter Pin; 1/4" x 2"
17	171-830	1	Dust Cap
18	174-582	1	8-Bolt Hub
	170-865	1	Grease Zerk 1/8" NPT
19	174-583	1	Inside Bearing Cup 3.54 (Timken # JLM506810) or Equiv.
20	171-827	8	Nut; 5/8" NF
21	174-586	8	Stud; 5/8"
22	171-825	1	Outside Bearing Cup, 2.89 (Timken # LM501310) or Equiv.

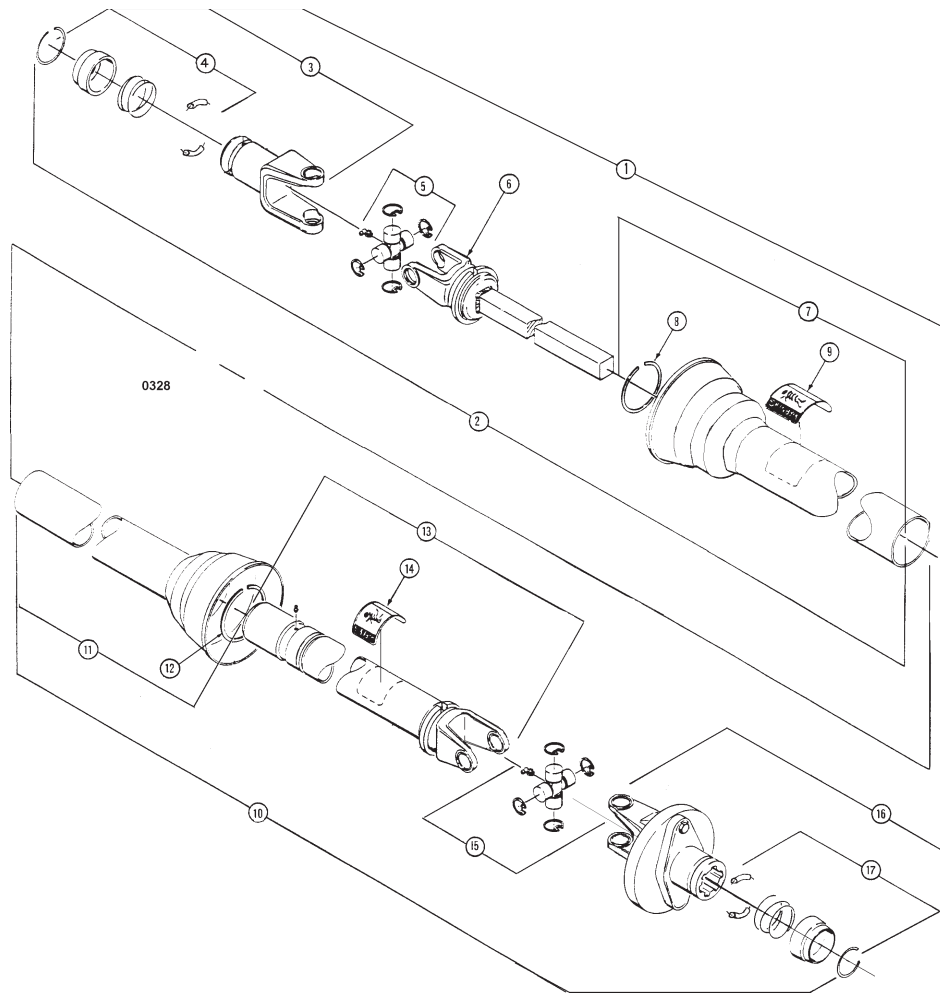
Undercarriage parts (3020-087 and before)



REF	PART NO	QTY	DESCRIPTION
1	101-912	1	Undercarriage Weldment
2	101-741	1	Clevis Hitch; Mtg Hrd: 3/4" x 2" Bolt, (grade8) Ln, (grade 8)(4 ea)
3	170-984	1	Jackstand (refer to jackstand parts pages for parts breakdown)
4	172-284	2	Wheel; 22 1/2 x 8 1/4- 8 Hole
	173-119	2	Wheel; 16.1 x 11 - 8 Hole
5	172-139	4	Weigh Bar; 1-7/8" Dia
	173-229	4	Weigh Bar; 1-7/8" Dia; Mtg Hrd:5/8" x 3-1/2" Bolt, Ln(1ea)
	133-976	4	Dummy Weigh Bar Mount (For Units Without Scales)
			Mtg Hrd To Spool: 3/8" x 2-1/2" Bolt & LN (1 ea)
			Mtg Hrd To Endstop: 3/8" x 3-1/2" Bolt & LN
6	101-742	4	Weigh Bar Mount Spool, Mtg Hrd To Unit: 5/8" x 1-3/4" B, FW & LN (2ea)
7	101-909	2	Riser Assembly; Mtg Hrd: 5/8" x 1-3/4" Bolt, & LN (8 ea) (optional)
8	170-985	1	Mount Tube (Weld-on)
9	171-745	2	Spindle; 2 1/2" x 14-1/2" Mtg Hrd: 3/8" x 4" Bolt & LN
10	170-755	2	8-Bolt Hub Assembly
11	170-556		Grease Seal, C/R 25105
12	170-554	1	Inside Bearing Cone; Timken 3720
13	170-545	1	Outside Bearing Cone; Timken 14137A
14	170-131	1	Flat Washer
15	170-132	1	Castle Nut
16	170-236	1	Cotter Pin; .16 x 1-1/2"
17	170-550	1	Dust Cap
18	170-705	1	8-Bolt Hub
	170-865	1	Grease Zerk 1/8" NPT
19	170-553	1	Inside Bearing Cup; Timken 3720
20	171-827	8	Nut; 5/8" NF
21	171-826	8	Stud; 5/8"
22	170-546	1	Outside Bearing Cup; Timken 14276

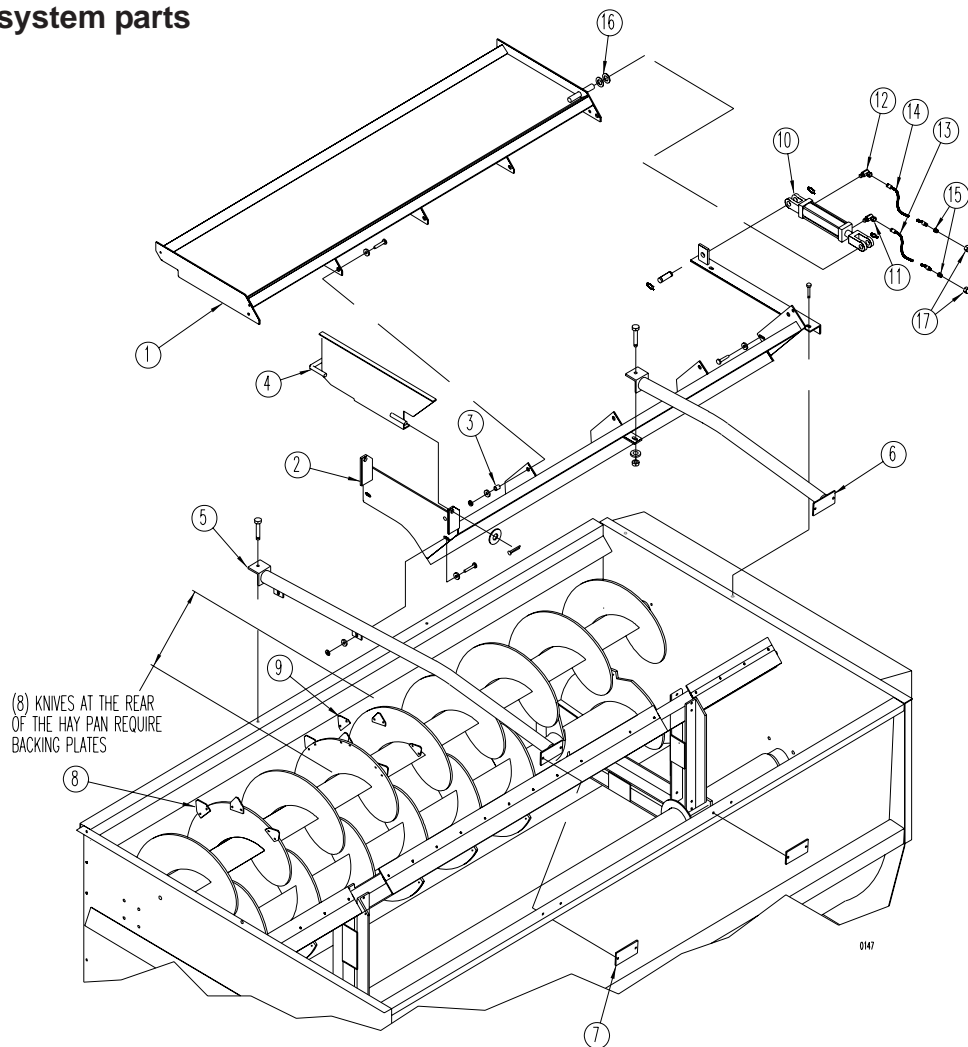
PTO driveline

(540 RPM - 6 Spline - 1-3/8" Yoke)



REF	PART NO	QTY	DESCRIPTION
1	173-428	1	Driveline Complete
2	171-751	1	Joint and Shaft Half with Guard
3	172-018	1	Yoke Assembly
4	172-019	1	Safety Slide Lock Repair Kit
5	170-720	1	Cross and Bearing Kit
6	171-753	1	Yoke and Shaft
7	171-756	1	Outer Guard
8	170-220	1	Nylon Repair Kit
9	171-550	1	Safety Decal
10	173-427	1	Joint and Tube Half with Guard
11	171-755	1	Inner Guard
12	170-220	1	Nylon Repair Kit
13	171-754	1	Yoke Tube and Slip Sleeve
14	171-799	1	Safety Decal
15	170-720	1	Cross and Bearing Kit
16	172-926	1	Shear Bolt Assembly
	172-986	1	Shear Bolt; 1/4" x 2" (grade 5)
	170-069	1	Lock Nut; 1/4" (grade 5)
17	172-019	1	Safety Slide Lock Repair Kit

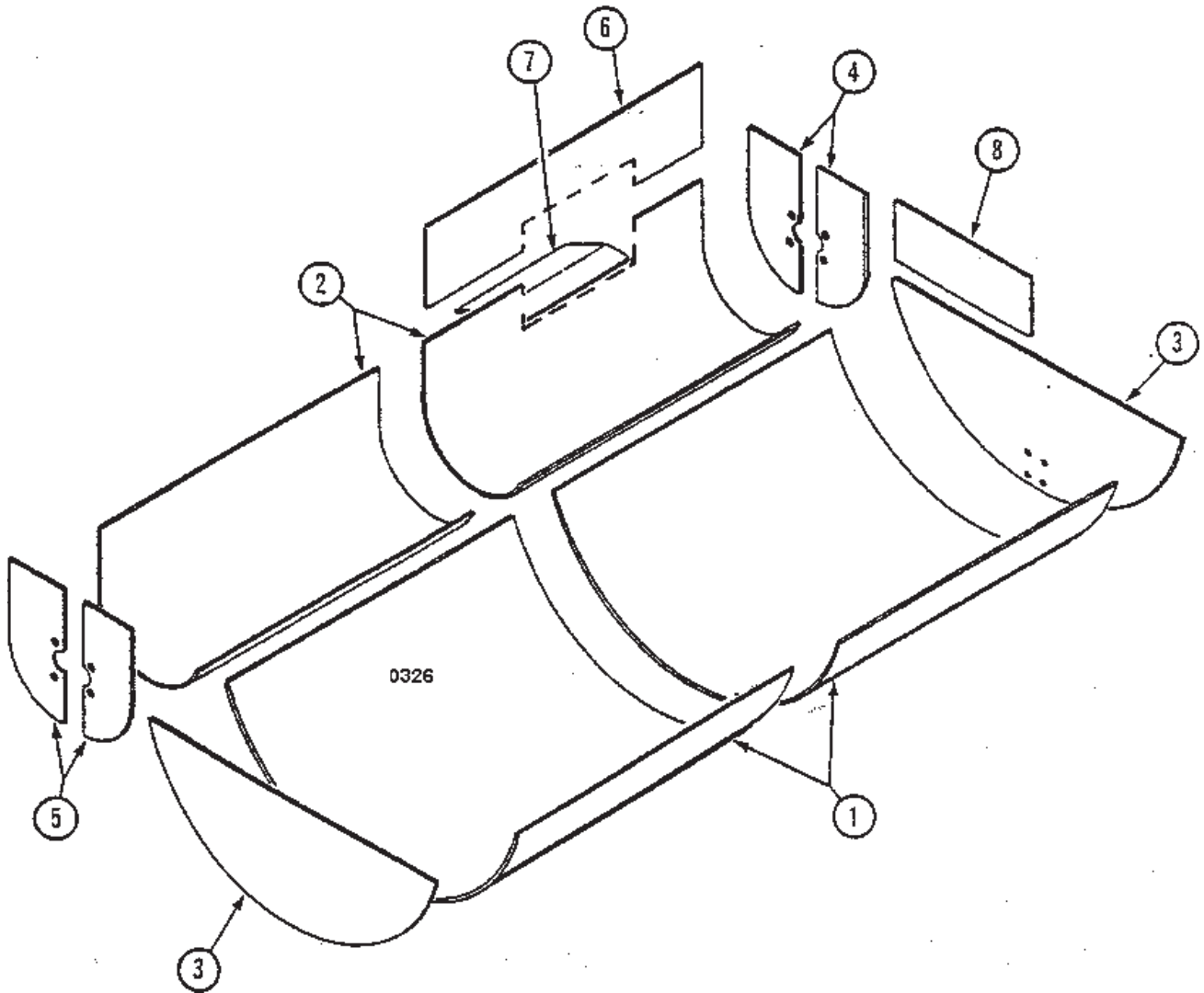
HAY MAXX system parts



REF	PART NO	QTY	DESCRIPTION
1	102-553	1	Upper HAY MAXX Attachment; Mtg Hrd: 1/2" x 1-3/4" B, LN (5ea.), FW (8ea.)
2	102-559	1	Lower HAY MAXX Attachment; Mtg Hrd: 1/2" x 1-1/4" Bolt,FW, LN (3 ea.) 1/2" x 1-1/2" Bolt, LN (2 ea.), FW, (4 ea.)
3	134-771	5	Pivot Bushing
4	102-554	1	Haypan Backstop; Mtg Hrd: 3/4" FW, 3/16" x 2" Cotter Pin
5	102-560	1	Bucket Guard; Mtg Hrd: 1/2" x 1-1/2" B, FW, LN (1ea.)
6	102-561	1	Bucket Guard; Mtg Hrd: 1/2" x 1-1/2" B, FW, LN (1ea.)
7	134-012	2	Bucket Guard Mount; Mtg Hrd: 3/8" x 1-1/4" B, LW, Nut (2ea.)
8	174-558	52	Auger Knife (Quantity listed is total for HAY MAXX option) Mtg Hrd: (Knife only) 5/16" x 3/4" Bolt, LW & Nut (2 ea.) Mtg Hrd: (Knife with back plate) 5/16" x 1" Bolt, LW & Nut (2 ea. Knife)
9	136-921	8	Backing Plate
10	173-273	1	Hydraulic Cylinder; 2" Dia. x 10" Stroke, (Seal Kit # 170-075)
11	171-030	1	90 Deg. Swivel Adapter; 3/8"
12	171-723	1	90 Deg. Swivel Restrictor; 3/8"
13	170-468	1	Hydraulic Hose; 1/4" x 162"
14	170-471	1	Hydraulic Hose; 1/4" x 170"
15	170-235	2	Reducer Fitting; 1/2" To 3/8"
16	170-122	A/R	Spacer Washer; 1" SAE Flat (6-9 required)
	172-442	1	Electric Switching Valve (Optional) Mounted On Tractor

Reel liner parts

REF	PART NO		QTY	DESCRIPTION
	Mild Steel	Stainless Steel		
1	134-701	141-372	2	Reel Liner
2	134-702	141-373	2	Auger Liner
3	134-703	141-374	2	Reel End Liner
4	134-708	141-375	1	Auger End Liner (Front)
5	134-707	141-378	1	Auger End Liner (Rear)
6	134-704	141-377	1	Upper Door Liner
7	134-716	141-379	1	Door Opening Liner
8	134-705	141-376	1	Upper Reel Liner



Safety chain for towed equipment

P/N 173-077

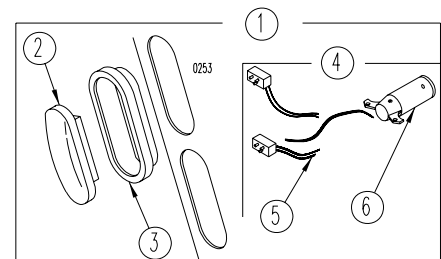
This chain is designed to retain the connection between towing and towed machines, in the event of separation of the primary attaching system. It should be utilized whenever the unit is on the highway.

Light kit for towed equipment (Standard Equipment)

This light kit is designed for lighting and marking of agricultural field equipment whenever the equipment is on a highway. This kit is pre-assembled, and it includes mounting hardware.

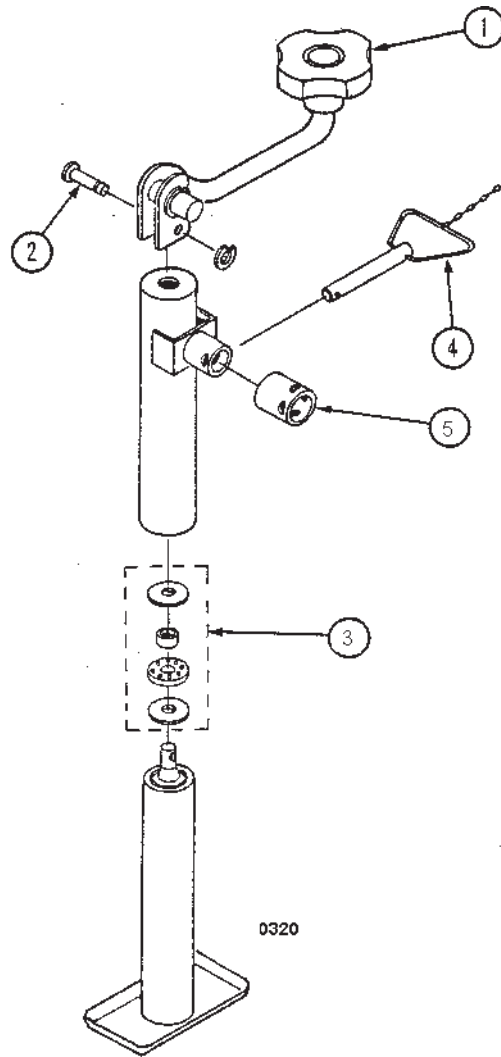
Light Parts

	PART NO	QTY	DESCRIPTION
1	174-675	1	Light Kit
2	174-673	2	Amber Light
2	174-674	2	Red Light
3	174-725	4	Grommet
4	174-775	1	Wire Harness
5	174-724	4	Light Plug with pigtail
6	172-110	1	7-pin Connector



Jackstand

REF	PART NO	QTY	DESCRIPTION
	170-984	1	Jackstand Assembly
1	170-386	1	Crank Assembly
2	171-860	1	Crank Pin (Includes "C" Washer)
3	170-397	1	Thrust Bearing Kit
4	170-987	1	Pin and Chain Assembly
5	170-985	1	Mount Tube



Decals

The following decals are listed below for your convenience.
Use the operator's manual for decal location and part number ordering.

PART NO	QTY	DESCRIPTION
174-628	1	Complete Set
174-555	2	Decal Model Number "3020"
170-490	1	Reduce Engine RPM...
170-849	2	WARNING, Stay Clear Of Power Driven Parts
170-893	1	SMV
171-712	1	Retighten Setscrews...
171-748	1	Door Height Gauge
171-820	4	DANGER, Rotating Auger Inside
171-911	1	CAUTION, Operating Precautions
171-913	1	WARNING, Do Not Operate Unless Shields Are In Place
171-916	2	DANGER, Stay Clear of Chute Rotating....
171-915	1	DANGER, Do Not Operate! Shield Missing
171-947	4	DANGER, Do Not Hand Load
171-948	1	BEWARE, Operating Mixer While Loading
171-949	1	Patent Information
172-292	1	Mixer Fill Line
172-820	1	CAUTION, Lifting Instructions
172-883	1	Oil Level Plug
173-040	1	CAUTION, PTO Operation
173-041	1	Shearbolt Clutch Adjustment
173-044	1	Made in Wisconsin
173-447	2	"REEL AUGGIE"
173-448	10'	Black Stripe
174-514	2	"KUHNNIGHT"
174-686	2	Red Reflector
174-687	1	Amber Reflector

Power Chute and Slide Tray Decals:

171-914	2	WARNING - Stay Clear of Chute...
174-687	1	Amber Reflector
174-686	1	Red Reflector

PTO Driveline Decals:

171-550	1	DANGER - Rotating Driveline
171-799	1	DANGER - Shield Missing
171-599	1	Do Not Exceed 540 RPM

HAY MAXX Decals:

172-449	1	Patent. . .
174-556	1	HAY MAXX SYSTEM

Paint

177-251	Kuhn Knight Yellow - Aerosol Can	177-247	Kuhn Knight Red - Aerosol Can
175-788	Kuhn Knight Yellow - Quart Can	177-246	Kuhn Knight Red - Quart Can
175-789	Kuhn Knight Yellow - Gallon Can	177-245	Kuhn Knight Red - Gallon Can

Hardware part number listing

All fasteners are NC thread, Grade 5 unless otherwise specified.

HEX HEAD BOLTS

Size	Part No
1/4 x 1/2	173-279
1/4 x 3/4	170-803
1/4 x 7/8	171-094
1/4 x 1	170-310
1/4 x 1-1/2	170-068
1/4 x 2	172-986
1/4 x 2 (Grade 8)	175-073
1/4 x 2-3/4	171-203
1/4 x 3	171-403
1/4 x 3-1/2	173-640
1/4 x 4	173-505
5/16 x 5/8	170-532
5/16 x 3/4	170-262
5/16 x 3/4 (Stainless steel)	174-787
5/16 x 7/8	170-256
5/16 x 1	170-027
5/16 x 1-1/4 (Full thread)	170-188
5/16 x 1-1/2	170-372
5/16 x 1-3/4	170-263
5/16 x 2	172-987
5/16 x 2-1/2	170-369
5/16 x 3	170-295
5/16 x 3-1/4	171-639
5/16 x 3-1/2	173-748
5/16 x 4	170-293
5/16 x 4-1/2	170-294
5/16 x 5 (Grade 8)	172-983
5/16 x 5-1/2 (Grade 8)	172-952
3/8 x 3/4	170-439
3/8 x 3/4 (Stainless steel)	174-788
3/8 x 7/8	170-268
3/8 x 7/8 (soc. hd.capscrew)	172-044
3/8 x 1	170-054
3/8 x 1-1/4	170-005
3/8 x 1-1/4 (Stainless steel)	174-917
3/8 x 1-1/2	170-368
3/8 x 1-3/4	172-383
3/8 x 2	170-245
3/8 x 2-1/4	170-320
3/8 x 2-1/2	170-257
3/8 x 2-1/2 (Full thread)	170-128
3/8 x 2-1/2 (Lag)	171-775
3/8 x 3	170-380
3/8 x 3-1/2	170-292
3/8 x 4	170-877
3/8 x 4-1/4 (Black oxide)	171-813
3/8 x 4-1/2	170-519
3/8 x 5	170-493
3/8 x 5-1/2	174-196
3/8 x 5-1/2 (Full thread)	170-593
3/8 x 6	174-304
3/8 x 6-1/2	171-291
3/8 x 7	172-587
7/16 x 3/4	170-265
7/16 x 1	170-032
7/16 x 1-1/4	170-354
7/16 x 1-1/4 (Grade 8)	174-216
7/16 x 1-1/2	170-059
7/16 x 2	170-356
7/16 x 2-1/2	170-379
7/16 x 3	170-270
7/16 x 5-1/2	170-377
7/16 x 6	170-378
1/2 x 3/4	171-252
1/2 x 1	170-149
1/2 x 1-1/4	170-373

1/2 x 1-1/2	170-002
1/2 x 1-1/2 (Grade 8)	172-951
1/2 x 1-3/4	171-774
1/2 x 2	171-802
1/2 x 2-1/4	172-387
1/2 x 2-1/2	170-885
1/2 x 2-1/2 (Full thread)	171-099
1/2 x 2-3/4	172-007
1/2 x 3	170-168
1/2 x 3-1/2	170-167
1/2 x 3-1/2 (Grade 8)	172-950
1/2 x 4	173-111
1/2 x 4 (Full thread)	171-509
1/2 x 5	171-412
1/2 x 6	173-506
1/2 x 6 (Grade 8)	174-944
1/2 x 6-1/2	173-711
1/2 x 7	174-328
1/2 x 7-1/2	175-107
1/2 x 8-1/2	170-504
1/2 x 11	170-506
9/16 x 1	173-699
9/16 x 1-1/4	173-700
9/16 x 1-1/2	173-701
9/16 x 2	172-219
5/8 x 1	171-087
5/8 x 1-1/4	171-366
5/8 x 1-1/2	170-153
5/8 x 1-3/4 (Full thread)	170-030
5/8 x 2	170-009
5/8 x 2 (Full thread)	171-772
5/8 x 2-1/4	173-009
5/8 x 2-1/2	172-381
5/8 x 2-1/2 (Full thread)	170-129
5/8 x 2-3/4	172-356
5/8 x 3	170-258
5/8 x 3-1/2	170-038
5/8 x 4	170-371
5/8 x 4-1/2	170-067
5/8 x 5	170-065
5/8 x 5-1/2	172-421
5/8 x 6	170-381
5/8 x 6-1/2	173-777
5/8 x 7-1/2	173-019
5/8 x 9-1/2	171-039
3/4 x 1-1/2	173-507
3/4 x 2	171-768
3/4 x 2 (Full thread)	170-058
3/4 x 2 (Grade 8)	171-877
3/4 x 2-1/4	171-275
3/4 x 2-1/2	170-374
3/4 x 2-1/2 (Grade 8)	175-055
3/4 x 3	170-014
3/4 x 3 UNF	173-776
3/4 x 3-1/2	170-195
3/4 x 3-1/2 (Grade 8)	171-899
3/4 x 4	170-419
3/4 x 4 (Grade 8) UNF	173-579
3/4 x 4-1/2	170-846
3/4 x 4-1/2 (Grade 8)	173-039
3/4 x 4-1/2 (Grade 8) UNF	173-588
3/4 x 5	173-508
3/4 x 5 UNF	173-510
3/4 x 5-1/2 (Grade 8) UNF	173-514
3/4 x 6	171-116
3/4 x 6 UNF	173-511
3/4 x 6 (Grade 8)	173-231
3/4 x 7	173-745

3/4 x 7 UNF	173-747
3/4 x 7-1/2	175-004
3/4 x 8	173-509
7/8 x 2-1/4	172-892
7/8 x 3	172-002
7/8 x 3-1/2	173-020
7/8 x 4	173-299
7/8 x 4 UNF	171-092
7/8 x 6-1/2	173-774
7/8 x 7	173-749
7/8 x 7 UNF	174-097
7/8 x 8	173-750
7/8 x 8 UNF	173-515
1 x 3-1/2	173-021
1 x 4	175-119
1 x 4 (Grade 8)	175-248
1 x 7 UNF	173-516
1 x 8	174-723
1 x 8 (grade 8) UNF	173-713
1-1/4 x 4-1/2 (grade 8)	175-003
M8 x 16MM (Grade 8.8)	174-610
M8 x 20MM (Grade 8.8)	175-193
M8 x 25MM (Grade 8.8)	174-900
M10 x 22MM (Grade 8.8)	175-016
M10 x 25MM (Grade 8.8)	173-344
M12 x 25MM (Grade 8.8)	171-566
M12 x 35MM (Grade 8.8)	175-020
M12 x 40MM (Grade 12.9)	175-190
M12 x 45MM (Grade 10.9)	174-911
M14 x 30MM (Grade 8.8)	173-518

SELF TAPPING SCREW

1/4 x 3/4	174-874
-----------	---------

CARRIAGE BOLTS

1/4 x 1-1/4 (Grade 2)	170-311
1/4 x 1-1/2 (Grade 2)	170-355
1/4 x 2 (Grade 2)	170-299
1/4 x 2-1/2 (Grade 2)	171-394
1/4 x 2-3/4 (Grade 2)	170-508
1/4 x 3	170-509
5/16 x 1 (Grade 2)	170-370
5/16 x 1-1/2 (Grade 2)	170-296
5/16 x 2-1/2 (Grade 2)	171-395
5/16 x 5-1/2 (Grade 2)	170-494
3/8 x 3-1/2 (Grade 2)	171-283
3/8 x 4-1/2 (Grade 2)	170-191
3/8 x 5 (Grade 2)	170-495
3/8 x 6-1/2 (Grade 2)	171-174
3/8 x 8 (Grade 2)	170-297
3/8 x 13 (Grade 2)	170-298
3/8 x 13-1/2 (Grade 2)	170-300
1/2 x 1-1/2 (Grade 5)	174-918
1/2 x 6-1/2 (Grade 2)	171-098
1/2 x 9 (Grade 2)	171-255
5/8 x 2	175-110
5/8 x 2-1/2 (Grade 5)	174-790

PLOW BOLTS

5/8 x 2	174-767
3/4 x 2-1/2	174-948

TRUSS HEAD BOLTS

#6-32 x 3/4	172-416
#6-32 x 1	173-079
#8-32 x 1-1/2	171-210
#10-32 x 3/4	171-604
#10-32 x 1	172-882
1/4 x 3/4	170-193
1/4 x 1	170-194
5/16 x 1	170-117

Hardware part number listing

SET SCREWS (Socket Head)(Cup Point)	3/4 (Grade 8) UNF	173-578	COTTER PINS	1/16 x 1/2	170-992
1/4 x 1/4	7/8	173-069	3/32 x 3/4	170-364	
1/4 x 5/8	7/8 UNF	171-093	1/8 x 1	170-045	
5/16 x 1/4	1	174-928	1/8 x 1-1/4	170-033	
5/16 x 5/16	1 UNF	170-527	1/8 x 1-1/2	170-382	
5/16 x 5/16 UNF	M45 x 1.5MM	175-199	5/32 x 1	170-421	
5/16 x 3/8 UNF	M50 x 1.5MM	175-197	5/32 x 1-1/2	170-236	
5/16 x 1/2	JAM NUTS		5/32 x 3	170-135	
5/16 x 5/8 UNF	1/4UNF	171-386	3/16 x 1-1/4	170-991	
5/16 x 1 (Sq hd)	5/16	173-521	3/16 x 2	170-115	
5/16 x 1-1/2	3/8	170-022	1/4 x 1-1/2	170-521	
3/8 x 1/4	7/16	170-046	1/4 x 2	170-056	
3/8 x 3/8	1/2	170-036	1/4 x 2-1/2	173-961	
3/8 x 1/2	5/8	170-037	ROLLER CHAIN		
3/8 x 1/2 UNF	3/4	170-035	CONNECTOR LINKS		
3/8 x 3/4	1	174-927	#50	170-088	
3/8 x 3/4 (Sq hd)	FLAT WASHERS		#50-2R	170-094	
3/8 x 1	#10	171-525	#60	170-089	
3/8 x 1 (Sq hd)	1/4	170-301	#60-2R	170-095	
3/8 x 1 (Sq hd) (Dog pt)	1/4 Heavy	171-083	#60H	171-102	
7/16 x 7/16	1/4 Fender	173-672	#80	170-090	
7/16 x 1 (Sq hd)	5/16	170-127	#80H	170-821	
1/2 x 5/8	5/16 Fender	173-811	#100	170-091	
1/2 x 1	3/8	170-244	#100H	171-969	
1/2 x 1-1/4 (half dog point)	3/8 Heavy	170-302	#120	170-092	
5/8 x 5/8	3/8 Aluminum	173-900	#140	170-093	
3/4 x 3/4 (Sq hd) (Dog pt)	7/16	170-138	#140H	173-552	
HEX NUTS	1/2	170-040	#160	170-888	
#6-32	1/2 (Grade 8)	172-984	OFFSET LINKS		
#10-32	9/16	173-693	#50	170-096	
1/4	5/8	170-066	#50-2R	170-102	
5/16	5/8 (Grade 8)	173-581	#60	170-097	
3/8	3/4	170-015	#60-2R	170-103	
7/16	7/8	173-298	#60H	171-103	
7/16 (Grade 8) UNF	7/8 Heavy	170-131	#80	170-098	
1/2	1	170-122	#80H	170-820	
9/16	1-1/4	170-928	#100	170-099	
5/8	LOCK WASHERS		#100H	172-145	
3/4	#6	172-417	#120	170-100	
3/4 UNF	#10	171-605	#140	170-101	
3/4 (Grade 8) UNF	1/4	170-124	#140H	173-553	
7/8	5/16	170-118	#160	170-887	
1	3/8	170-006	ROLLER LINKS		
1 UNF	7/16	170-061	#50	171-415	
1 (Grade 8)	1/2	170-003	#60	171-416	
1 (Grade 8) UNF	9/16	173-692	#80	171-417	
1-1/8 UNF	5/8	170-010	#80H	170-795	
1-1/4 UNF	3/4	170-016	#100	171-418	
1-1/4 (Grade 8)	3/4 External Tooth	174-793	#100H	172-146	
M8 x 1.25MM	7/8	172-003	#120	171-419	
M30 x 1.5MM	1	171-021	#140	171-420	
M50 x 1.5MM	1-1/4	175-005	#160	171-421	
LOCK NUTS	ZERKS				
#6-32	1/8 NPT	170-865			
#10-32	1/8 NPT-45 Deg	170-864			
1/4	1/8 NPT-65 Deg	170-215			
5/16	1/8 NPT-90 Deg	170-866			
3/8	3/16 drive in	174-124			
7/16	1/4-28	170-023			
1/2	1/4-28 - 45 Deg	170-148			
1/2 UNF	1/4-28 - 90 Deg	170-049			
1/2 (Grade 8)	1/4 NPT	170-277			
9/16	1/4 NPT - 45 Deg	174-130			
5/8					
3/4					
3/4 (Grade 8)					

Part number index

101-22711	133-9185	140-93811
101-23111	133-9205	141-37218
101-7088	133-94211	141-37318
101-7288	133-94311	141-37418
101-7318	133-95211	141-37518
101-7335	133-97614	141-37618
101-73611	134-0127, 17	141-37718
101-74114, 15	134-0865	141-37818
101-74214, 15	134-13612, 13	141-37918
101-7615	134-1555	141-60811
101-79112, 13	134-3518	170-00922
101-8185	134-3665	170-01422
101-8195	134-38911	170-03022
101-8698	134-39011	170-03822
101-89112, 13	134-39411	170-05822
101-90914, 15	134-39511	170-06522
101-91215	134-4998	170-06722
102-0097	134-70118	170-12922
102-0158	134-70218	170-19522
102-2437	134-70318	170-25822
102-2467	134-70418	170-37422
102-2477	134-70518	170-0008
102-2495	134-70718	170-0085
102-2517	134-70818	170-0535
102-2608	134-7118	170-0545
102-4146	134-7418	170-05611
102-4309	134-7565	170-0695, 16
102-51414	134-7588	170-0736
102-5447	134-77117	170-07517
102-55317	135-5985	170-1085
102-55417	135-6545	170-11011
102-55917	135-6625	170-12211, 17
102-56017	135-6757	170-13115
102-56117	135-6767	170-13215
103-70211	135-6987	170-1425, 8
103-73711	135-7018	170-1495
103-75511	136-0425	170-1525
103-75611	136-2335	170-15322
103-75811	136-2605	170-16722
103-78011	136-3266	170-22016
103-78111	136-3606	170-235
103-91811	136-36366, 9, 11, 12, 13, 17
131-0118	136-3789	170-23615
133-2775	136-4196	170-2445
133-3765	136-4449, 11	170-3738
133-8318	136-4926	170-38620
133-8328	136-92117	170-39720
133-8338	136-99014	170-46512, 13
133-8495	140-89611	170-4686, 9, 17
133-8525	140-89711	170-4716, 9, 17
133-9035	140-90211	170-4785, 9
133-9145	140-93311	170-49021
133-9155	140-93711	170-50422

Part number index

170-50622	171-75416	173-04121
170-51313	171-75516	173-04421
170-54515	171-75616	173-11915
170-54615	171-76822	173-1645
170-55015	171-79916	173-22011
170-55315	171-82021	173-22914, 15
170-55615	171-82615	173-2706, 9
170-70515	171-82715	173-27317
170-72016	171-86020	173-42716
170-75515	171-87722	173-42816
170-8005	171-88311	173-44721
170-84921	171-89922	173-44821
170-85911	171-91121	174-51421
170-8655, 15	171-91321	174-55521
170-89321	171-91521	174-5588, 17
170-8985	171-91621	174-58414
170-9479	171-9195, 8	174-58514
170-98414, 15, 20	171-9207	174-58714
170-98514, 15, 20	171-9315	174-62821
170-98720	171-93211	174-67319
171-03922	171-9345	174-67419
171-08722	171-9355	174-67519
171-27522	171-9365	174-68621
171-36622	171-9379, 11	174-68721
171-41222	171-94011	174-72419
171-77222	171-94721	174-72519
171-00811	171-94821	174-77519
171-0306, 9, 11, 17	171-94921	174-88611
171-0488	171-9515	174-92711
171-0498	171-99813	174-92811
171-13611, 12, 13	172-0059	175-5366, 9, 11
171-15111	172-0065	175-78821
171-18611	172-01816	175-78921
171-18913	172-01916	177-24521
171-25911	172-0245	177-24621
171-26011	172-11019	177-24721
171-26511	172-13914, 15	177-25121
171-33011	172-1935	180-6305
171-4095	172-28415	
171-41411	172-28514	
171-42613	172-29221	
171-42711	172-35622	
171-43012, 13	172-38122	
171-55016	172-42122	
171-5855	172-44217	
171-66611	172-82021	
171-66811	172-8225	
171-71221	172-88321	
171-72317	172-8845	
171-74515	172-92616	
171-74821	172-9865, 16	
171-75116	173-02111	
171-75316	173-04021	