



# **KNIGHT**

## **TRAILER PARTS MANUAL**

### **MODELS 3025 / 3030**

#### **Contents**

Using This Listing .....	3
Front End Parts .....	4-5
Front Drive Parts .....	6
Chains and Tighteners .....	8-9
Reel and Auger Parts - 3025 Only ...	10-11
Reel and Auger Parts - 3030 Only ...	12-13
Undercarriage Parts .....	14-15
Door Parts .....	16
Slide Tray Parts .....	17
3 Auger Discharge Parts .....	18
Selector Valve - Power Chute Option ...	20
Selector Valve - Slide Tray Option ...	21
HAY MAXX Parts .....	22-23
Repair Liner Parts .....	24
Scale Connector Repair Parts .....	25
Scale Parts .....	26-27
PTO Driveline - 540 RPM - 6 Spline ..	28-29
Decals .....	30
Paint List .....	31
Optional Kits .....	31
Hardware Part Number Listing .....	32-33
Part Number Index .....	34-0035

Catalog Part Number 005800      Unit Serial Number \_\_\_\_\_

Operator Instruction Manual for this unit: 005798

**Abbreviations**

Assy	Assembly
A/R	As Required
B	Bolt
Brg	Bearing
BSN	Before Serial Number
Btm	Bottom
C-Bolt	Carriage Bolt
Cttr	Cotter
CV	Constant Velocity
Deg	Degree
Dia	Diameter
ea	Each
eq or Equiv	Equivalent
Fln	Flanged Lock Nut
Fw	Flat Washer
Ga	Gauge
Gr or Grd	Grade
Hd	Head
Hfw	Heavy Flat Washer
Hyd	Hydraulic
ID	Inside Diameter
Ill or Illus	Illustration
Ind	Indicator
Jn	Jam Nut
Kw	Keyway
LH	Left Hand
Ln	Lock Nut
Lw	Lock Washer
Mtg Hrd	Mounting Hardware
NC	National Coarse
NF	National Fine
NLA	No Longer Available
NPT	National Pipe Thread
OD	Outside Diameter
Pc(s)	Piece(s)
PD	Pitch Diameter
PTO	Power Takeoff (shaft)
Qty	Quantity
RH	Right Hand
SN	Serial Number
SHCS	Socket Head Cap Screw
Spk, or Spkt or Sprkt	Sprocket
Sq	Square
SS	Stainless Steel
SSB	Stainless Steel Bolt
St	Straight
Std	Standard
STS	Self Tapping Screw
UASN	Used After Serial Number
UBSN	Used Before Serial Number
W	With
W/O	With Out

## Using This Listing

This listing uses a number indentation system to specify the parts of an assembly. Any number which is indented to the right, indicates that it is a component of the item to the upper left. Example:

<u>Part no</u>	<u>Qty</u>	<u>Description</u>
102-AAA	#	Assembly A
102-BBB	#	Sub-Assembly B
(Component of A)		
140-xxx	#	Sub-Component of B
140-xxx	#	Sub-Component of B
102-CCC	#	Sub-Assembly C
(Component of A)		
etc.		

Using this system, the subassemblies and their components are included if an **Assembly** is ordered. Similarly, the components of a subassemblies are included if a subassembly is ordered.

The quantity (Qty) associated with an assembly, represents the number of times an assembly could be shown in the drawing. The subassembly quantity however, is the number of times a subassembly is used to build one assembly. Similarly, the component quantity refers to the number of times a given component is found in one subassembly.

MODEL AND SERIAL NUMBER INFORMATION is located near the front left hand corner (Fig. A). The model number, serial number and part number should be known when asking service personnel for parts.

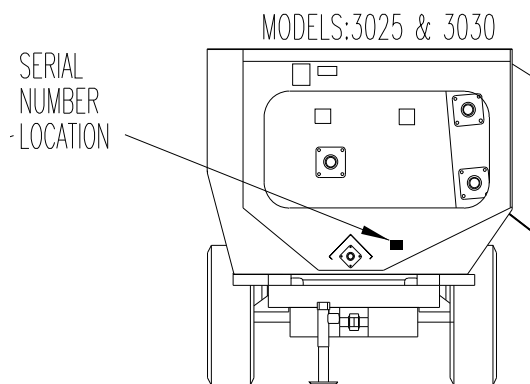


Fig. A

The serial number may consist of a number, or a number with a letter prefix. When referring to serial number breaks in the text of this manual, a serial number with a prefix will have been manufactured after a serial number without a prefix (A001 made after 0123). Likewise, a higher prefix letter would indicate manufacture after a lower prefix letter (B001 made after A123). Therefore, if the text refers to units manufactured after serial number B123, this would include “B” series numbers greater than 123, and all numbers with a higher letter prefix.

If you cannot find the part you need, be as descriptive as possible when placing an order:

**Sprockets:** give the bore size, number of teeth, and size of keyway.

**Roller chain:** give the size of chain (stamped on the side of each link) and number of links.

**Shafting:** give the diameter, length, and quantity and size of keyways.

Hardware is generally not included with parts. If you need any hardware, check the size, the length, and the grade (Fig. B), then check the hardware list in this manual for the part numbers.

**All hex head bolts are grade 5, and nuts are grade B unless otherwise stated.**

The hardware listing also includes listings for zerks, cotter pins, set screws, and roller chain links.

**The illustrations in this manual are meant to be used only as a guide for identifying parts and locating their relative positions.**

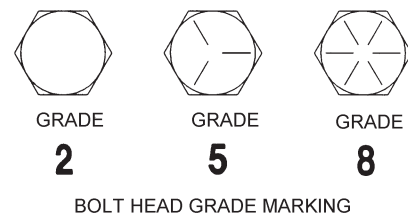
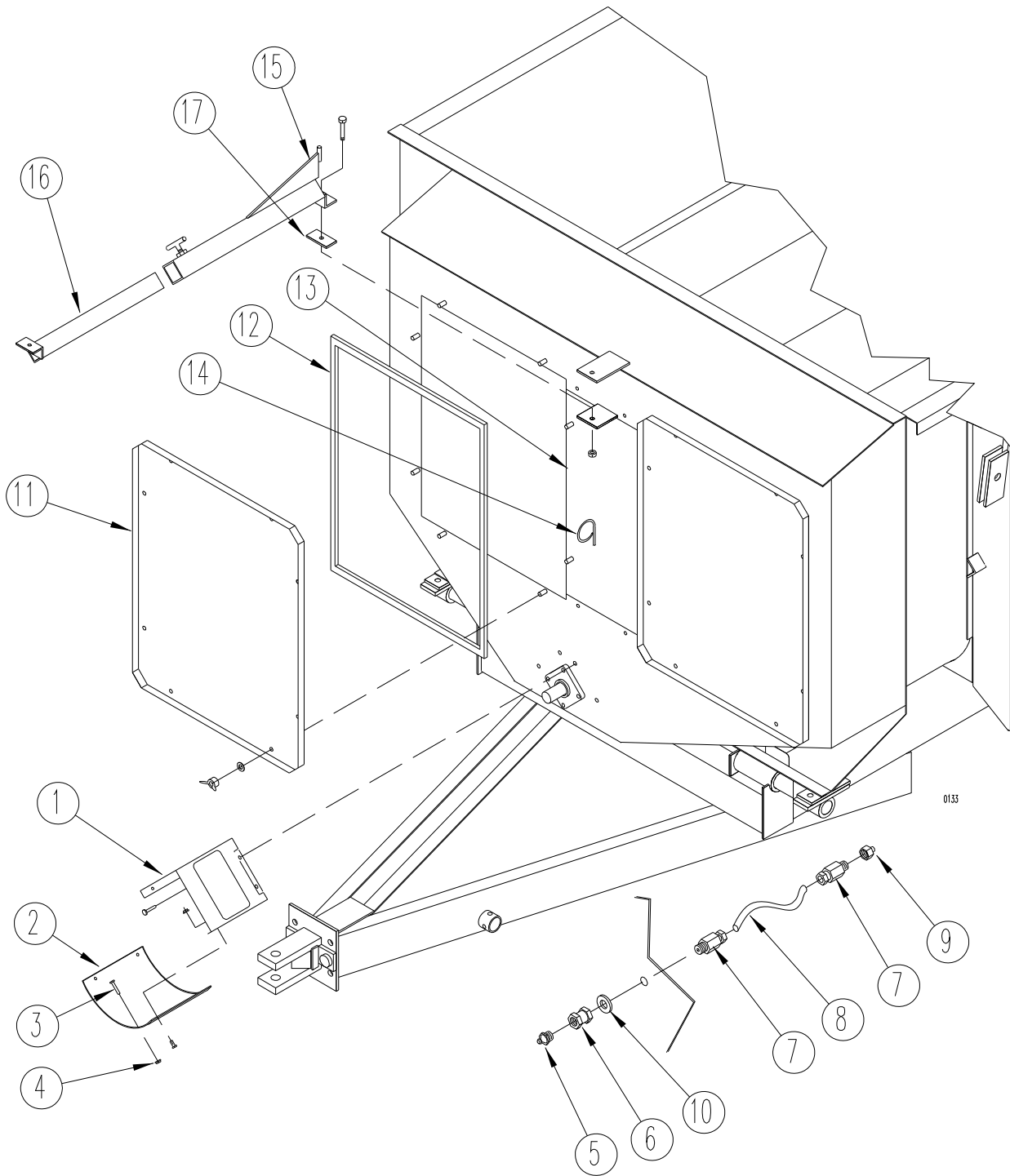


Fig. B

**Front End Parts**



## Front End Parts

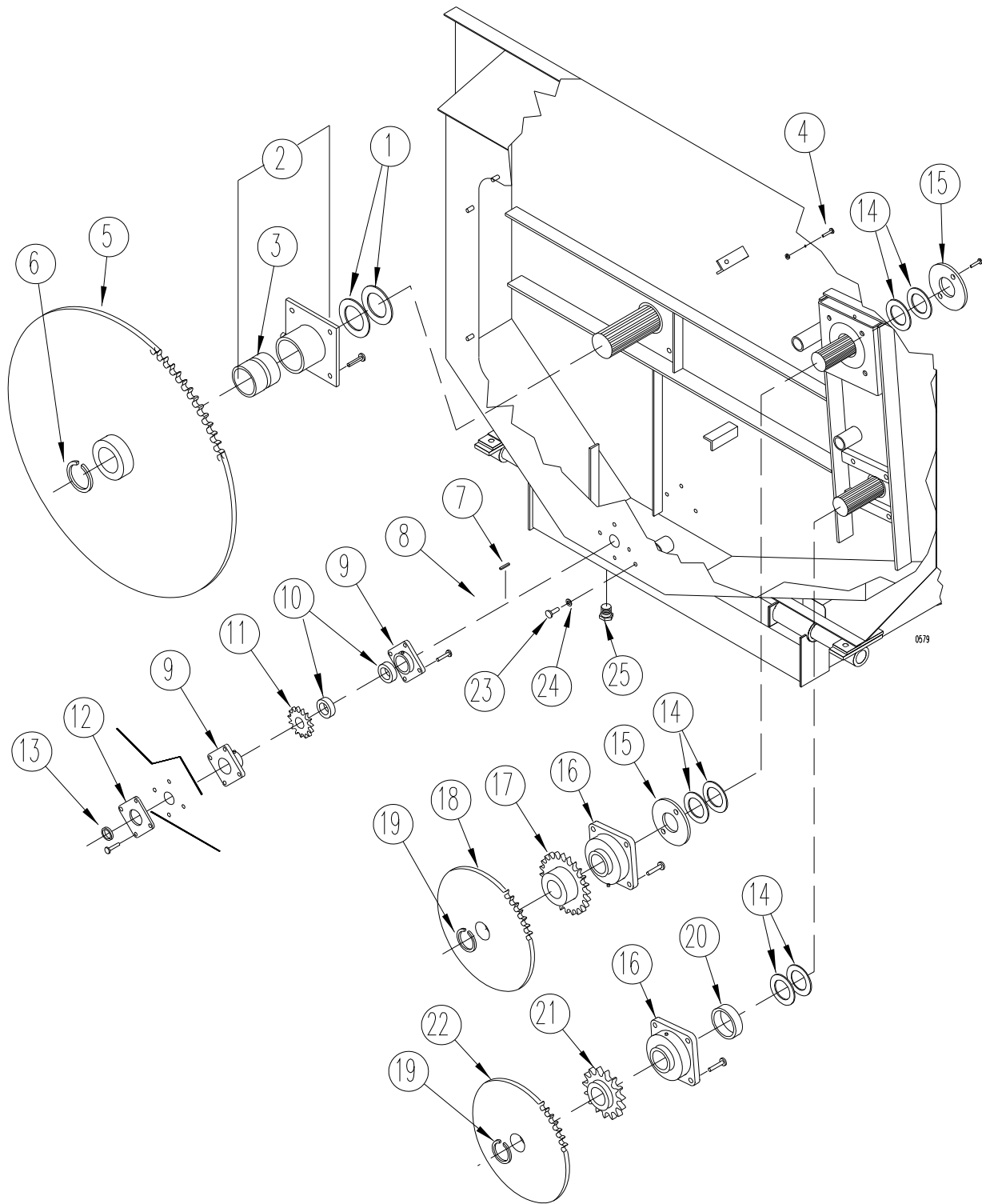
REF	PART NO	QTY	DESCRIPTION
1	136-076	1	<b>Shield; PTO Cover;</b> Mtg Hrd: 3/8 X 1" Bolt, FW, LW, N (3 ea) (inc decals:170-490 & 173041)
2	133-920	1	PTO Driveline Shield (1/8" x 9" x 16") Mtg Hrd: 5/16" x 3/4" Bolt & FLN (4 ea)
3	175-073	3	Shear Bolt; 1/4" x 2" ( <i>grade 8</i> )
4	170-069	3	Lock Nut; 1/4" ( <i>grade 5</i> )
5	170-865	1*	Grease Zerk 1/8" NPT
6	172-024	1*	Coupling
7	172-822	2*	Compression Fitting
8	180-630**		Grease Line Tubing
		18"	Required for upper auger bearing
		16"	Required for lower auger bearing
		23"	Required for front reel bearing
		21"	Required for inner input shaft bearing
		21"	Required for outer input shaft bearing
9	172-823***	1*	Adapter Fitting; 1/4" SAE X 1/8" NPTF
10	170-244	1*	Flat Washer 3/8"
11	136-835	2	<b>Safety Shield; Front Drive;</b> Mtg Hrd: 3/8" NC Wing Nut (171-929) & FW (8ea)
12	171-935	10'6"	Front Shield Gasket; 3/8" x 3/4" Closed Cell Foam (QTY PER SHIELD)
13	136-837	1	Sheet, Center Panel; Mtg Hrd: 3/8" x 7/8" bolt, FW, LW, N
14	134-900	1	Hose Hanger (weld on)
15	102-437	1	Swing Arm Assembly, Outer Mtg Hrd: 1/2" X 1 1/2 Bolt, LN (inc "T" Bolt)
16	102-439	1	Swing Arm Assembly, Inner
17	136-454	1	Belt, Rubber 1/4" X 3 1/2" X 2"

\* Quantity required to complete 1 grease line assy

\*\* Sold by the linear foot.

\*\*\* Not required on all installations.

### Front Drive Parts

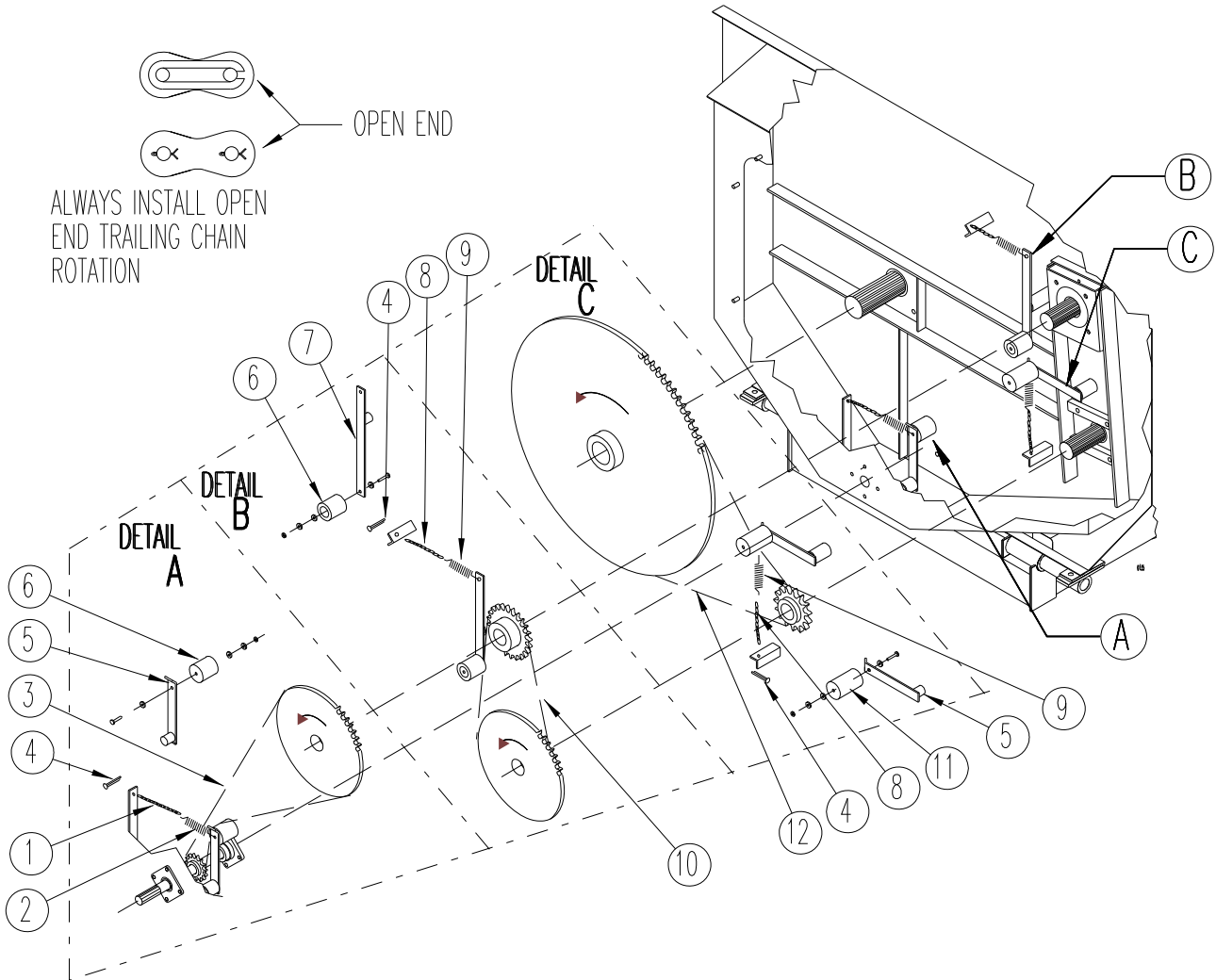


0579

**Front Drive Parts**

REF	PART NO	QTY	DESCRIPTION
1	135-598	2	Seal Washer, 3-1/2" ID x 4 3/4" OD
2	102-249	1	Bearing Assembly; Mtg Hrd: 5/8" x 1-1/2" Bolt, Lw, Nut (2 ea)
3	135-662	1	Bushing, Straight, 3 1/2" ID
4	170-373	1	No Hay Maxx Option Plug 1/2" x 1-1/4", Ln
5	136-810	1	Sprocket; 100-B-100, 3-1/2" Splined Bore
6	171-607	1	Snap Ring, External; 3-1/2"
7	171-409	1	Key, SQ 3/8" x 1-1/4"
8	136-042	1	Input Shaft; 1-3/8" x 15-3/4" (6 spline)
9	171-585	2	Bearing; 1-3/8", Outer Bearing Mtg Hrd: 1/2" x 1-3/4" Bolt, LW & Nut (4 ea) Inner Bearing Mtg Hrd: 1/2" x 1-1/2" Bolt, LW & Nut (3 ea)
10	172-193	2	Shaft Collar; 1-3/8"
11	133-918	1	Sprocket; 60-B-14, 1-3/8" Bore
12	136-260	1	Seal Retainer
13	173-164	1	Seal; 1.375" ID x 1.84" OD x .25" (C/R # 13536)
14	135-597	6	Seal; 3" ID x 4-1/4" OD
15	136-836	2	Seal Housing; 6" Dia; Mtg Hrd: 5/16" x 1-1/2" Bolt, FLN (2 ea)
16	170-053	2	Bearing; 2-1/2", Mtg Hrd: Upper auger: 5/8" x 2" Bolt, Lw, Nut (4 ea) Lower Auger: 5/8" x 3" Bolt, Lw, Nut (4 ea)
17	136-849	1	Sprocket; 80-B-30, 2-1/2" Splined Bore
18	136-844	1	Sprocket; 60-B-81, 2-1/2" Splined Bore
19	170-152	2	Snap Ring, External; 2-1/2"
20	136-858	1	Seal Spacer, 3" Dia x 1" LG
21	136-850	1	Sprocket; 100-B-15, 2-1/2" Splined Bore
22	136-847	1	Sprocket; 80-B-54, 2-1/2" Splined Bore
23	170-149	1	Oil Plug, 1/2" x 1"
24	172-884	1	Washer, 1/2" Nylon
25	171-919	1	Drain Plug, 1-1/4" PVC

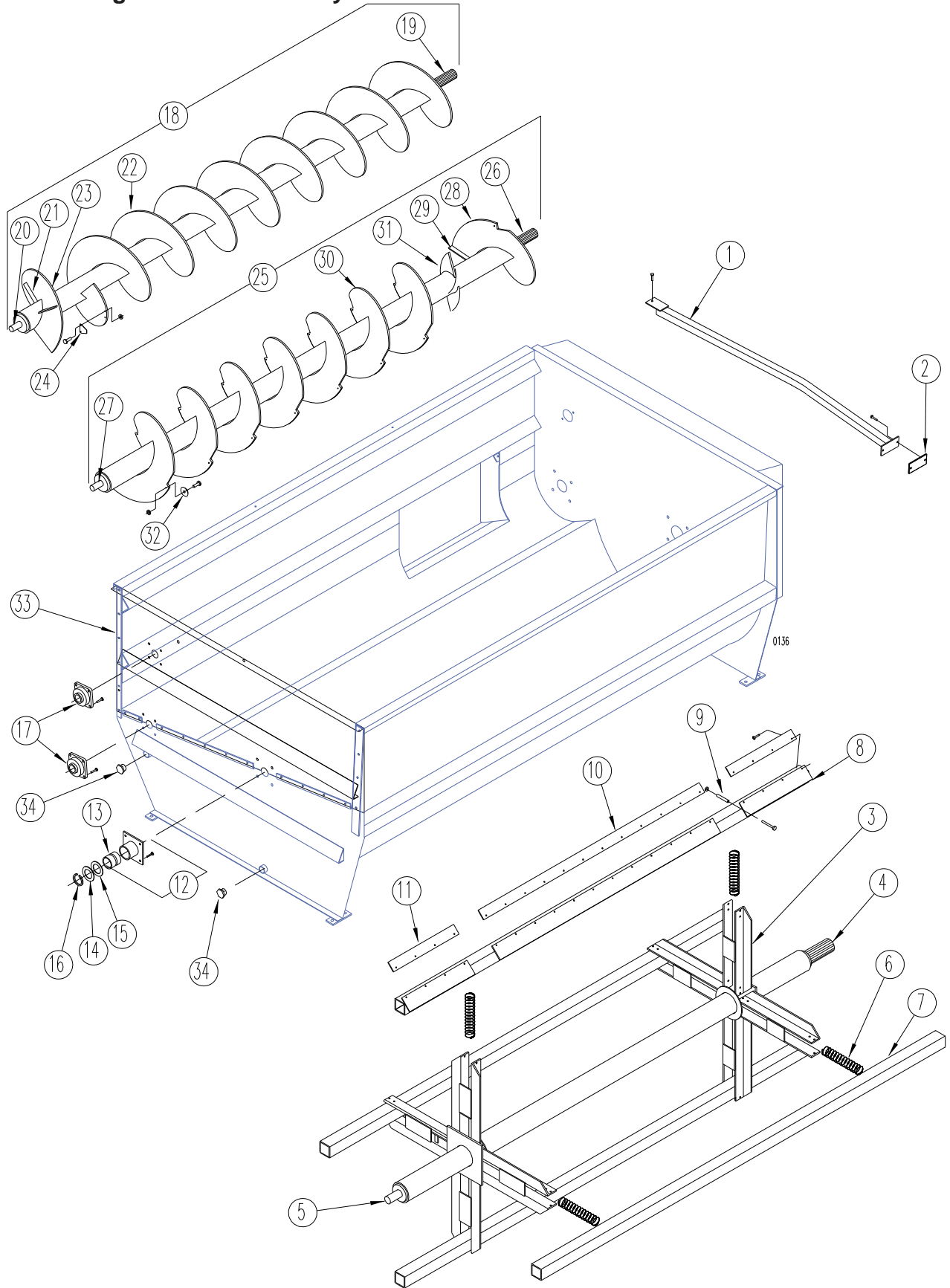
# Chains and Tighteners



**Chains and Tighteners**

<b>REF</b>	<b>PART NO</b>	<b>QTY</b>	<b>DESCRIPTION</b>
1	170-518	1	Machine Chain; #4 x 30 Links
2	172-005	1	Spring, Extension 6" LG x 1" OD
3	173-442	1	Roller Chain; 60H-1-192 Pitch, W/Connector Link
4	170-800	3	Clinch Pin, 3/16" x 1 1/2"
5	101-761	2	Chain Tightener Arm
6	134-155	2	Tightener Block Mtg Hrd: 1/2" x 2 3/4" Bolt, FW, LW & Nut
7	101-818	1	Chain Tightener Arm
8	170-478	2	Machine Chain; #4 x 12 Link
9	172-751	2	Spring, Extension 8 1/4" LG x 1 1/2" OD
10	173-443	1	Roller Chain; 80H-1-87 Pitch, W/Connector Link
11	134-086	1	Tightener Block Mtg Hrd: 1/2" x 4" Bolt, FW, LW & Nut
12	173-444	1	Roller Chain; 100H-1-130 Pitch, W/Connector Link

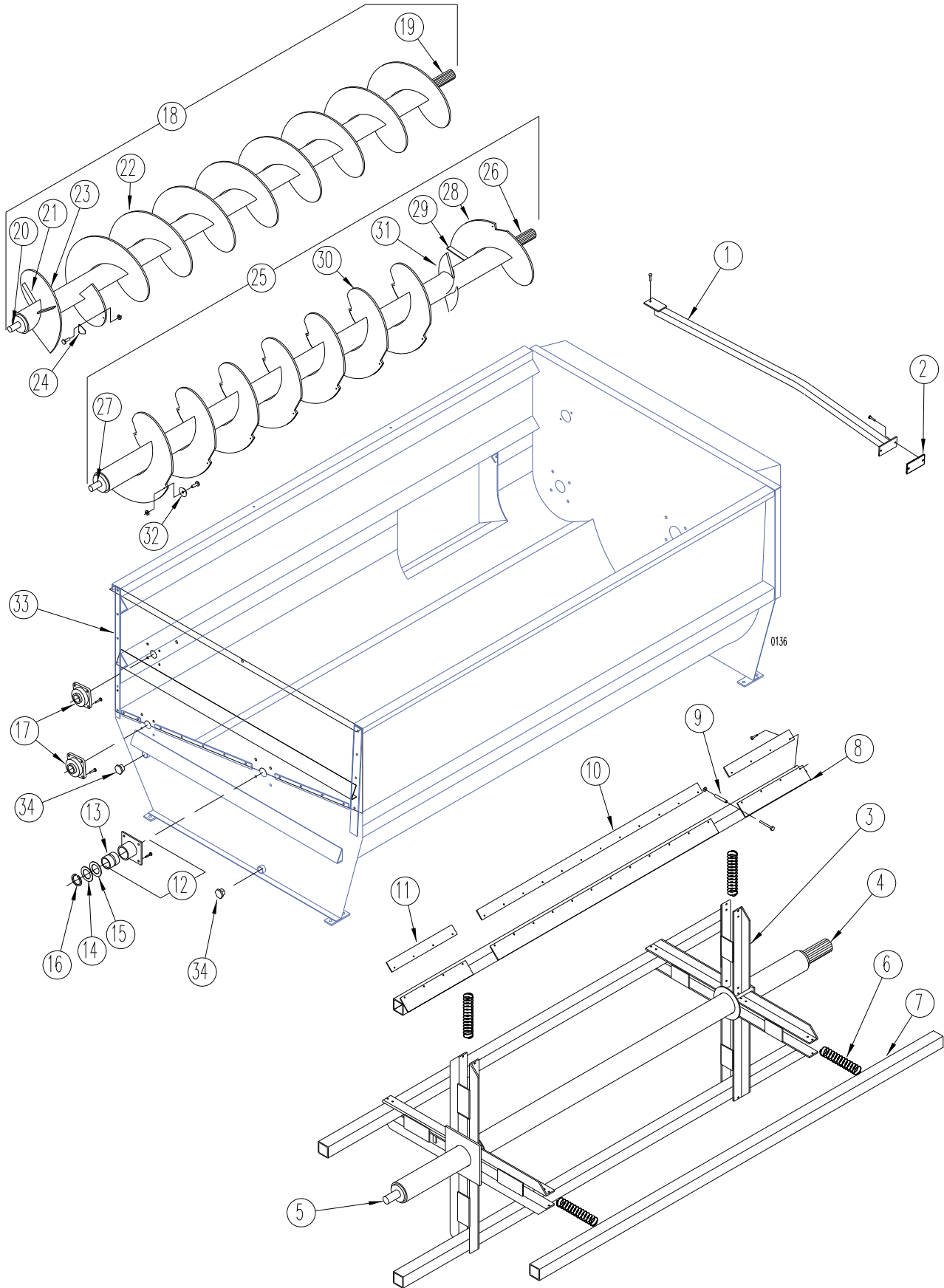
Reel and Auger Parts - 3025 Only



**Reel and Auger Parts - 3025 Only**

REF	PART NO	QTY	DESCRIPTION
1	102-545	2	Bucket Guard Assembly Mtg Hrd: 3/8" x 1-1/4" Bolt, LW & Nut (3 ea)
2	134-012	2	Guard Mount, 1/4" x 3" x 6"
3	102-543	1	Reel Weldment
4	102-247	1	Front Plug Assembly, 3-1/2"
5	102-251	1	Rear Plug Assembly, 2"
6	171-920	8	Spring; Reel Cross Pipe Compression, 16"LG x 2-3/8"OD
7	102-544	2	Reel Cross Pipe; Mtg Hrd: 3/8" x 5" Bolt, Lw, Nut
8	102-246	2	Cross Tube Wiper Assembly; Mtg Hrd: 3/8" x 5" Bolt, Lw, Nut
9	135-698	8	Retaining Sleeve
10	135-676	2	Plastic Wiper Blade; Long; Mtg Hrd: 1/4" x 7/8" Bolt, (171-083 Fw), Lw, Nut 10 ea
11	135-675	4	Plastic Wiper Blade; Short; Mtg Hrd: 1/4" x 7/8" Bolt, (171-083 Fw), Lw, Nut 4 ea
12	102-260	1	Bearing Assy. 2"; Mtg Hrd: 5/8" x 1-1/4" Bolt, Lw, Nut
13	135-701	1	Plastic Sleeve
14	171-048	A/R	Washer, Special; 2"ID x 3"OD x .081" Thick (4 max)
15	171-049	A/R	Washer, Special; 2"ID x 3"OD x .127" Thick (4 max)
16	170-142	1	Snap Ring; 2", External
17	170-057	2	Bearing; 1 1/2", Mtg Hrd: 1/2" x 1-1/2" Bolt, LW & Nut (4 ea)
18	102-541	1	Upper Auger Assembly
19	102-530	1	Front Plug Assembly, 2-1/2" Splined
20	102-537	1	Rear Plug Assembly, 1-1/2"
21	135-555	5	Flighting Brace, 3/8" x 1-1/2" x 5-1/2"
22	136-855	2	Flighting, RH; 14"P x 18"OD x 5-9/16ID x 3/8 THK x 53" LG
23	136-820	1	Flighting, LH; 14"P x 18"OD x 5-9/16ID x 1/4 THK x 7" LG
24	174-558	25	Knife, Sickle Section (Qty May Vary) Mtg Hrd: 5/16" x 3/4" Bolt, LW & Nut (2 ea)
25	102-542	1	Lower Auger Assembly
26	102-531	1	Front Plug Assembly, 2-1/2" Splined
27	102-537	1	Rear Plug Assembly, 1-1/2"
28	136-814	1	Flighting, RH; 18"P x 18"OD x 5-9/16ID x 3/8 THK x 18" LG
29	134-547	4	Auger Gusset, 1/2" x 2" x 5-3/8"
30	136-815	6	Flighting, LH; 18"P x 18"OD x 5-9/16ID x 3/8 THK x 18" LG
31	136-817	2	Paddle
32	134-352	20	Lower Auger Knife; (Quantity May Vary) Mtg Hrd: 3/8" x 1" Bolt, LW & Nut
33	102-535	1	Rear Panel (upper); Mtg Hrd:5/16" x 1 Bolt, FW, FLN (21 ea) 1/2" x 1-1/4"Bolt, LN,
34	171-919	2	Drain Plug; 1-1/4" PVC

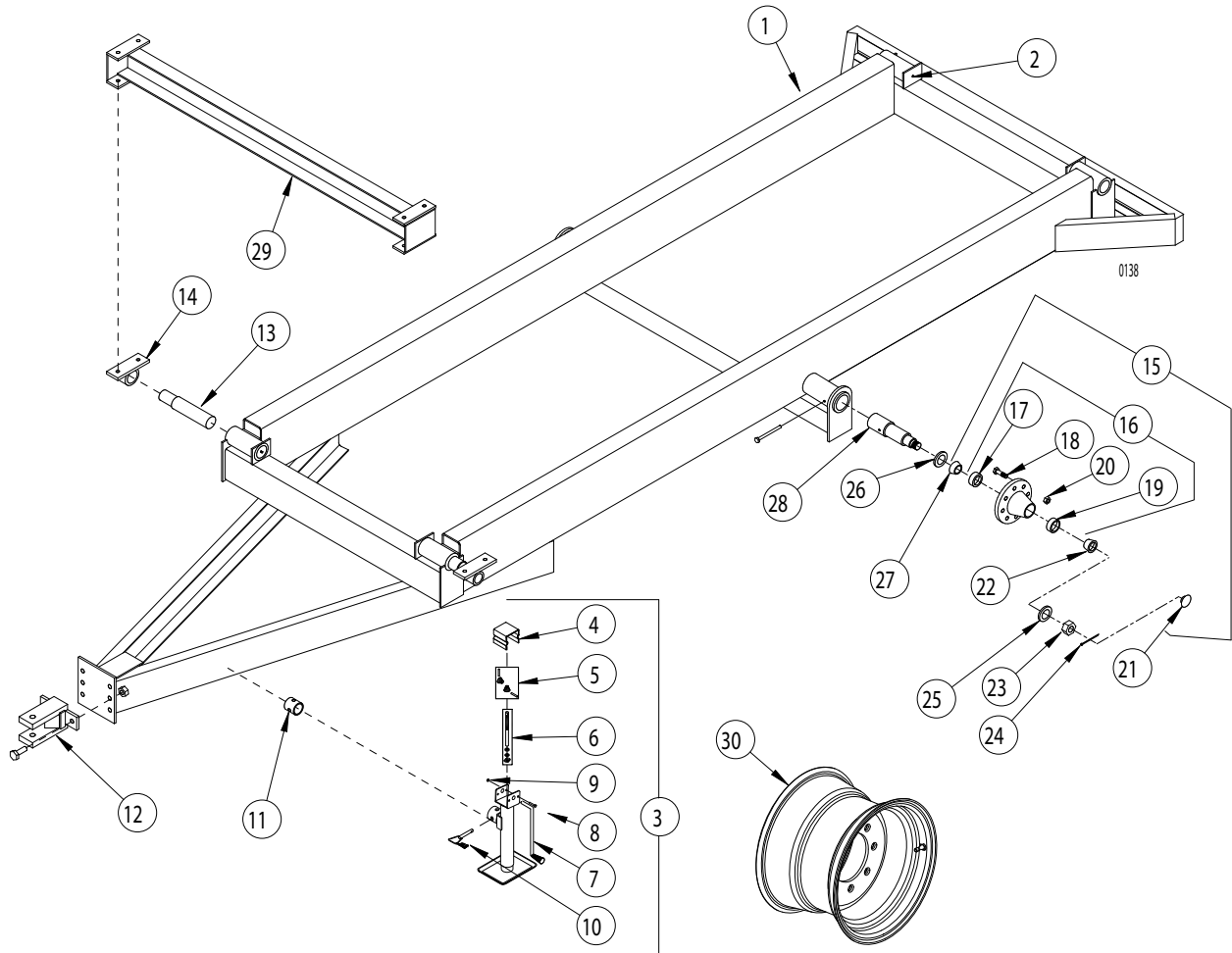
**Reel and Auger Parts - 3030 Only**



**Reel and Auger Parts - 3030 Only**

REF	PART NO	QTY	DESCRIPTION
1	102-545	2	Bucket Guard Assembly Mtg Hrd: 3/8" x 1-1/4" Bolt, LW & Nut (3 ea)
2	134-012	2	Guard Mount, 1/4" x 3" x 6"
3	102-534	1	Reel Weldment
4	102-247	1	Front Plug Assembly, 3-1/2"
5	102-251	1	Rear Plug Assembly, 2"
6	171-920	8	Spring; Reel Cross Pipe Compression, 16"LG x 2-3/8"OD
7	102-538	2	Reel Cross Pipe; Mtg Hrd: 3/8" x 5" Bolt, Lw, Nut
8	102-253	2	Cross Tube Wiper Assembly; Mtg Hrd: 3/8" x 5" Bolt, Lw, Nut
9	135-698	8	Retaining Sleeve
10	135-677	2	Plastic Wiper Blade; Long; Mtg Hrd: 1/4" x 7/8" Bolt, 12 req. per blade (171-083 Fw), Lw, Nut
11	135-675	4	Plastic Wiper Blade; Short; Mtg Hrd: 1/4" x 7/8" Bolt, 4 req. per blade (171-083 Fw), Lw, Nut
12	102-260	1	Bearing Assy. 2"; Mtg Hrd: 5/8" x 1-1/4" Bolt, Lw, Nut
13	135-701	1	Plastic Sleeve
14	171-048	A/R	Washer, Special; 2" ID x 3" OD x .081" Thick (4 max)
15	171-049	A/R	Washer, Special; 2" ID x 3" OD x .127" Thick (4 max)
16	170-142	1	Snap Ring; 2", External
17	170-057	2	Bearing; 1-1/2", Mtg Hrd: 1/2" x 1-1/2" Bolt, LW & Nut (4 ea)
18	102-532	1	Upper Auger Assembly
19	102-530	1	Front Plug Assembly, 2-1/2" Splined
20	102-537	1	Rear Plug Assembly, 1-1/2"
21	135-555	8	Flighting Brace, 3/8" x 1-1/2" x 5-1/2"
22	136-819	2	Flighting, RH; 14" P x 18" OD x 5-9/16 ID x 3/8 THK x 65-1/2" LG
23	136-820	1	Flighting, LH; 14" P x 18" OD x 5-9/16 ID x 1/4 THK x 7" LG
24	174-558	30	Knife, Sickle Section (Qty May Vary) Mtg Hrd: 5/16" x 3/4" Bolt, LW & Nut (2 ea)
25	102-533	1	Lower Auger Assembly
26	102-531	1	Front Plug Assembly, 2-1/2" Splined
27	102-537	1	Rear Plug Assembly, 1-1/2"
28	136-814	1	Flighting, RH; 18" P x 18" OD x 5-9/16 ID x 3/8 THK x 18" LG
29	134-547	4	Auger Gusset, 1/2" x 2" x 5 3/8"
30	136-815	7	Flighting, LH; 18" P x 18" OD x 5-9/16 ID x 3/8 THK x 18" LG
31	136-817	2	Paddle
32	134-352	24	Lower Auger Knife; (Quantity May Vary) Mtg Hrd: 3/8" x 1" Bolt, LW & Nut
33	102-535	1	Rear Panel (upper); Mtg Hrd: 5/16" x 1 Bolt, FW, FLN (21 ea) 1/2" x 1-1/4" Bolt, LN,
34	171-919	2	Drain Plug; 1-1/4" PVC

# Undercarriage Parts

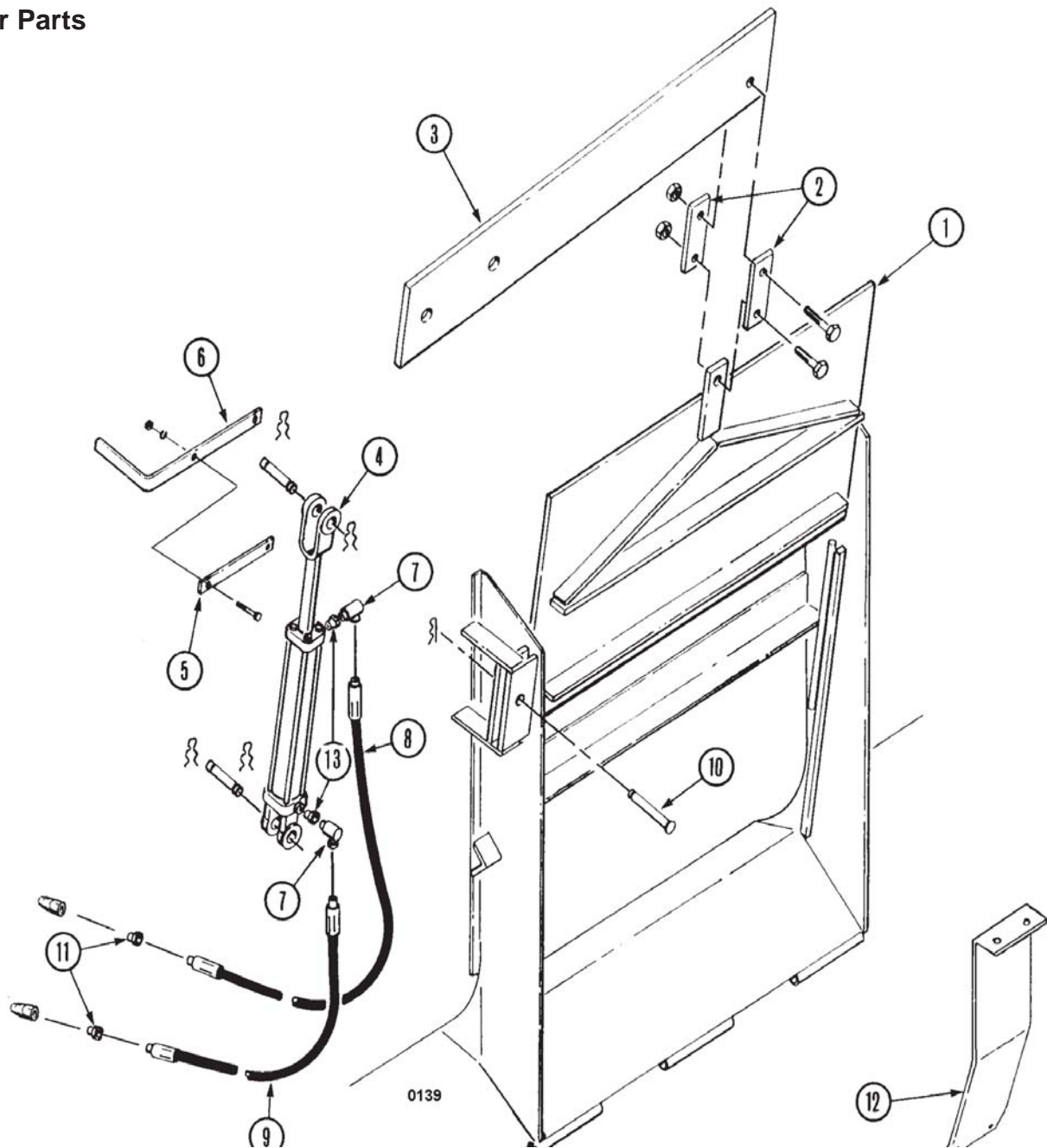


## Undercarriage Parts

REF	PART NO	QTY	DESCRIPTION
1	102-546	1	Undercarriage Weldment <b>For 3025</b>
1	102-539	1	Undercarriage Weldment <b>For 3030</b>
2	170-023	4	Zerk; 1/4"-28 NF
3	171-610	1	<b>Jack, Sidewind 7000 lb</b>
4	171-814	1	Cover
5	171-614	1	Gear Kit (2 bevel gears, 2 pins)
6	171-611	1	Screw, Nut, Bearing & Washer Assy.
7	171-612	1	Crank Assembly
8	170-509	2	Carriage bolt; 1/4" x 3"
9	170-125	2	Nut, 1/4"
10	171-613	1	Pull Pin
11	171-615	1	Mount Tube
12	101-741	1	Clevis Assembly; Mtg Hrd: 3/4" x 2" <b>GRD 8 Bolt &amp; GRD 8 LN</b> (2 ea)
13	133-976	4	Dummy Weigh Bar Mount (For Units Without Scales) Mtg Hrd To Spool: 3/8" x 2-1/2" Bolt & LN (1 ea) Mtg Hrd To Endstop: 3/8" x 3-1/2" Bolt & LN
14	101-742	4	Weigh Bar Mount Spool Mtg Hrd To Unit: 5/8" x 1-3/4" Bolt, FW & LN (2 ea)
15	171-815	2	8-Bolt Hub Assembly
16	171-823	1	8-Bolt Hub; includes (1ea) 170-865 Grease Zerk 1/8" NPT
17	171-824	1	Inside Bearing Race; Timken 382A
18	171-826	8	Stud; 5/8"
19	171-825	1	Outside Bearing Race; Timken LM501310
20	171-827	8	Wheel Nut
21	171-830	2	Dust Cap
22	171-829	2	Outside Bearing Cone; Timken LM501349
23	171-833	2	Castle Nut; 1" NF
24	170-056	2	Cotter Pin; 1/4" x 2"
25	171-832	2	Washer, Spindle 3"
26	171-831	2	Grease Seal; C/R 29968
27	171-828	2	Inside Bearing Cone; Timken 387AS
28	172-270	2	Spindle; 3" x 16" Mtg Hrd: 3/8" x 4" Bolt & LN
	136-843 <sup>A</sup>	2	Spindle; 3" x 14 1/2" Mtg Hrd: 3/8" x 4" Bolt & LN
29	101-909	2	Riser Option, Mtg Hrd: 5/8" x 1-3/4" Bolt, & LN (8 ea)
30	172-285	2	Wheel; 22-1/2" x 8-1/4", 8-Hole 3/8" Positive Offset (3025 Only)
	172-229	2	Wheel; 22.5 x 11.25 8 Hole 3/8" Positive Offset
	173-779	2	Wheel and Tire; 40 x 14.5 Aircraft Tire W/8 Hole Rim
	174-737	1	Outer Rim
	174-711	1	Inner Rim, 8 Hole; Mtg. Hrd: 1/2" x 1 1/4" B, LN (24ea)
	173-926	1	Tire, 40 x 14.5 Aircraft
	173-917	1	Tube, Tire H40 x 14.5
	173-916	1	Flap, Tire H40 x 14.5
	170-112 <sup>A</sup>	2	Wheel; 20" x 8", 8-Hole 1-1/2" Negative offset
	172-284 <sup>A</sup>	2	Wheel; 22-1/2" x 8-1/4", 8-Hole 1-1/2" Negative offset
	173-449 <sup>A</sup>	2	Wheel; 22.5 x 11-1/4 8" Hole 1-1/2" Negative offset

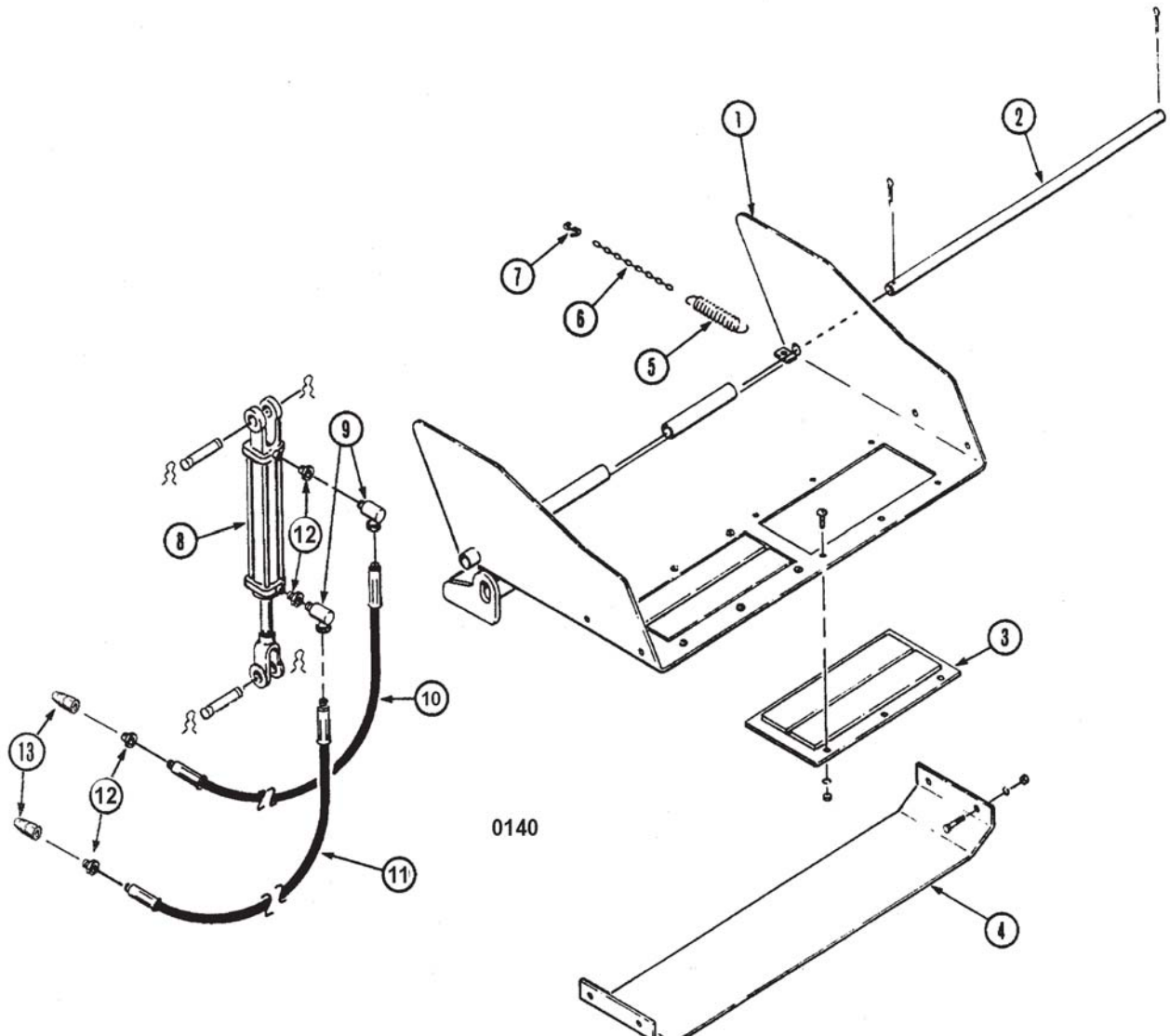
A: Use for serial number 3025: 190 and before; 3030: 452 and before.

**Door Parts**

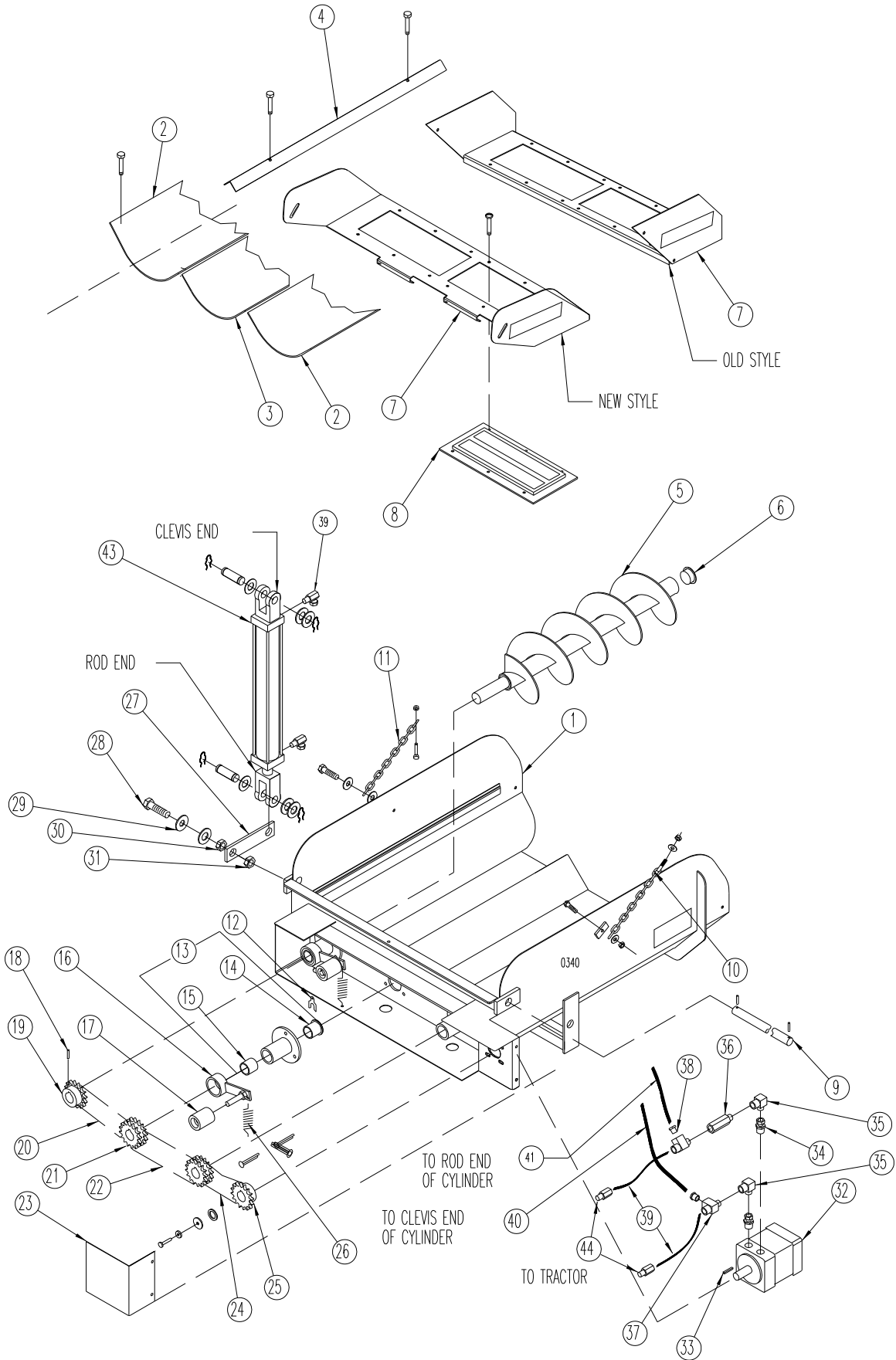


REF	PART NO	QTY	DESCRIPTION
1	102-414	1	Door Assembly
2	136-363	2	Door Linkage Bar; 3/8" x 2" x 6"
3	136-360	1	Door Pivot Bar; 5/8" x 4" x 31-15/16"
4	173-270	1	Hyd Cylinder; 2" x 8" (Seal Kit #170-075)
5	136-419	1	Door Gauge Mount; 1/8" x 5/8" x 3-3/4"
6	136-492	1	Door Gauge; 1/8" x 5/8" x 19-1/2" Mtg Hrd: 1/4" x 1" Pan Head B, LW & Nut (2 ea)
7	171-030	2	Swivel Adapter; 3/8"- 90 Degrees
8	170-471	1	Hyd Hose; 1/4" x 170" Overall Length
9	170-468	1	Hyd Hose; 1/4" x 162" Overall Length
10	170-073	1	Pin (1" Dia) For Door Pivot Bar (133-360) Secures With 170-074 Hairpin Clip
11	170-235	2	Reducer Bushing; 1/2" To 3/8"
12	136-326	A/R	Door Flow Control Plate; Mtg Hrd: 5/16" x 1-1/4" B, Lw, N (2ea) 5/16" x 1" B, Lw, N (2ea)
13	175-536	2	Pioneer Quick Coupler

## Slide Tray Parts



REF	PART NO	QTY	DESCRIPTION
1	102-430	1	Slide Tray Assembly (See Decal Section For Decals)
2	136-444	1	Pivot Rod, Mtg Hrd: 170-115 cotter pin; (2ea)
3	171-937	2	Magnet; Mtg Hrd: 1/4" x 3/4" Truss Head Bolt, Fw, Lw, Nut (6ea Magnet)
4	136-378	1	Skid Plate; Mtg Hrd: 1/4" x 3/4" Pan Head Screw, Lw, Nut (4ea)
5	172-005	1	Spring; 6" x 1" O.D.
6	170-478	1	Machine Chain; #4 x 12 links
7	170-947	1	"S" Hook
8	173-270	1	Hydraulic Cylinder; 2" x 8" (Seal Kit #170-075)
9	171-030	2	Swivel Connector; 3/8" - 90 Degree
10	170-471	1	Hydraulic Hose; 1/4" x 170"
11	170-468	1	Hydraulic Hose; 1/4" x 162"
12	170-235	2	Fitting, Reducer; 1/2" to 3/8"
13	175-536	2	Pioneer Quick Coupler



### 3 Auger Discharge Parts

REF	PART NO	QTY	DESCRIPTION
	103-781	1	Complete Chute Assembly 3'
	103-755	1	Complete Chute Assembly 2'
1	103-780	1	Chute Weldment 3'
	103-758	1	Chute Weldment 2'
2	133-942	2	Plastic Chute Liner, 3'- Side; Mtg Hrd: 1/4" x 3/4" Truss Head Bolt, Lw, Nut (2ea)
	140-937	2	Plastic Chute Liner, 2'- Side; Mtg Hrd: 1/4" x 3/4" Truss Head Bolt, Lw, Nut (2ea)
3	133-943	1	Plastic Chute Liner, 3'- Center; Mtg Hrd: 1/4" x 3/4" Truss Head Bolt, Lw, Nut (2ea)
	140-938	1	Plastic Chute Liner, 2'- Center; Mtg Hrd: 1/4" x 3/4" Truss Head Bolt, Lw, Nut (2ea)
4	140-897	2	Liner Hold Down; 3'- Mtg. Hrd: 1/2" Jam Nut, 5/16"x1 1/2" C-Bolt, Fw, Ln (2ea)
	140-933	2	Liner Hold Down; 2'- Mtg. Hrd: 1/2" Jam Nut, 5/16"x1 1/2" C-Bolt, Fw, Ln (2ea)
5	101-736	3	Auger Assembly, 3'
	103-756	3	Auger Assembly, 2'
6	171-186	3	Plastic Cap Plug; #16
7	101-737 <sup>A</sup>	1	Tip-off Assembly; Mtg. Hrd: 5/16" x 1" B, Lw, Nut (2ea)
	103-702 <sup>A</sup>	1	Tip-off Assembly; Mtg. Hrd: 5/16" x 1" B, Lw, Nut (2ea)
	170-056 <sup>A</sup>	2	Cotter Pin, 1/4" x 2" (not shown)
8	171-937	2	Magnet; Mtg. Hrd: 1/4" x 3/4" Truss Head Bolt, Fw, Lw, Nut (6ea)
9	136-444	1	Chute Pivot Rod, 7/8" x 39 1/2"; Mtg. Hrd: 170-115 Cotter Pin (2ea)
10	103-918	1	Chute Restraint Chain Assy Mtg Hrd: 5/16" x 1" Truss Head B, Fw, Lw, Nut, 3/8" Fw, Ln
11	141-608	1	Chain; 5/0 Coil x 27 Link; Mtg. Hrd: 5/16" x 1" B, Lw, Nut and 5/16" x 1" Truss Head Bolt, Fw, (3ea), Fln (1ea)
12	171-265	A/R	Shim; .017" Thick
13	101-227	3	Auger Bearing Assembly; 3/8" x 1 1/4" Bolt, Lw, Nut (3ea)
14	171-260	1	Bronze Bushing; 1 3/8" ID Flanged
15	171-259	1	Bronze Bushing; 1 3/8" ID
16	101-231	2	Chain Tightener Arm
17	134-395	2	Poly Block, 2" x 2 1/2"; Mtg Hrd: 5/8" Lw & Jam Nut
18	171-414	3	Roll Pin; 5/16" x 2 1/2"
19	140-902 <sup>B</sup>	1	Sprocket; 50-B-15, 1 3/8" Bore; Mtg. Hrd: 1/4" x 2 1/2" Roll Pin
20	174-886	1	Roller Chain; 50-1-54 Pitch
21	134-390	2	Sprocket; 50-2R-18 1 3/8" Bore; Mtg. Hrd: 1/4" x 2 1/2" Roll Pin
22	171-932	1	Roller Chain; 50-1-56 Pitch
23	140-896	1	Motor Drive Shield; Mtg. Hrd: 5/16" x 3/4" Bolt, Lw, Nut (2ea)
	134-394 <sup>A</sup>	1	Motor Drive Shield; Mtg. Hrd: 5/16" x 3/4" Bolt, Lw, Nut (2ea)
24	171-008	1	Roller Chain; 50-1-47 Pitch
25	134-389	1	Sprocket; 50-B-18, 1" Bore 1/4" Kw (including: 170-254 set screw)
26	170-110	2	Extension Spring
27	133-952	1	Chute Cylinder Linkage Bar; Mtg. Hrd: 170-074 Hair Pin Clip (2)
28	173-021	1	Bolt, 1" X 3 1/2" Hex Head
29	170-122	2	Spacer Washer; 1", SAE Flat
30	174-927	1	Nut, 1" Hex Jam
31	174-928	1	Nut, 1" Hex Lock
32	171-666	1	Hydraulic Motor; 12cu. in. (Seal Kit# 171-257) Mtg Hrd: 3/8"x7/8" B, Lw (4ea)
33	171-883	1	Key; 1/4" x 1/4" x 1"
34	171-668	2	Straight Thread Adapter; 7/8" M-ORB x 1/2" F-NPSM Sw.
35	171-136	2	Street Elbow; 1/2" x 90°
36	171-151	1	Line Check Valve; 1/2"
37	170-859	2	Adapter, Tee; 1/2" NPTF M x 1/2" NPTF F x 1/2" NPTF
38	170-235	2	Adapter, Straight, 1/2" NPTF M x 3/8" NPTF F
39	171-330	2	Hydraulic Hose; 1/2" X 168"
40	171-427	1	Hydraulic Hose; 1/4" X 82"
41	171-940	1	Hydraulic Hose; 1/4" X 64"
42	171-030	4	Swivel Connector; 90°
43	173-220	1	Cylinder; 2" dia x 18" (seal kit 170-075)
44	175-536	2	Pioneer Quick Coupler

<sup>A</sup> Tip-off and motor drive shield are not interchangeable with earlier models.

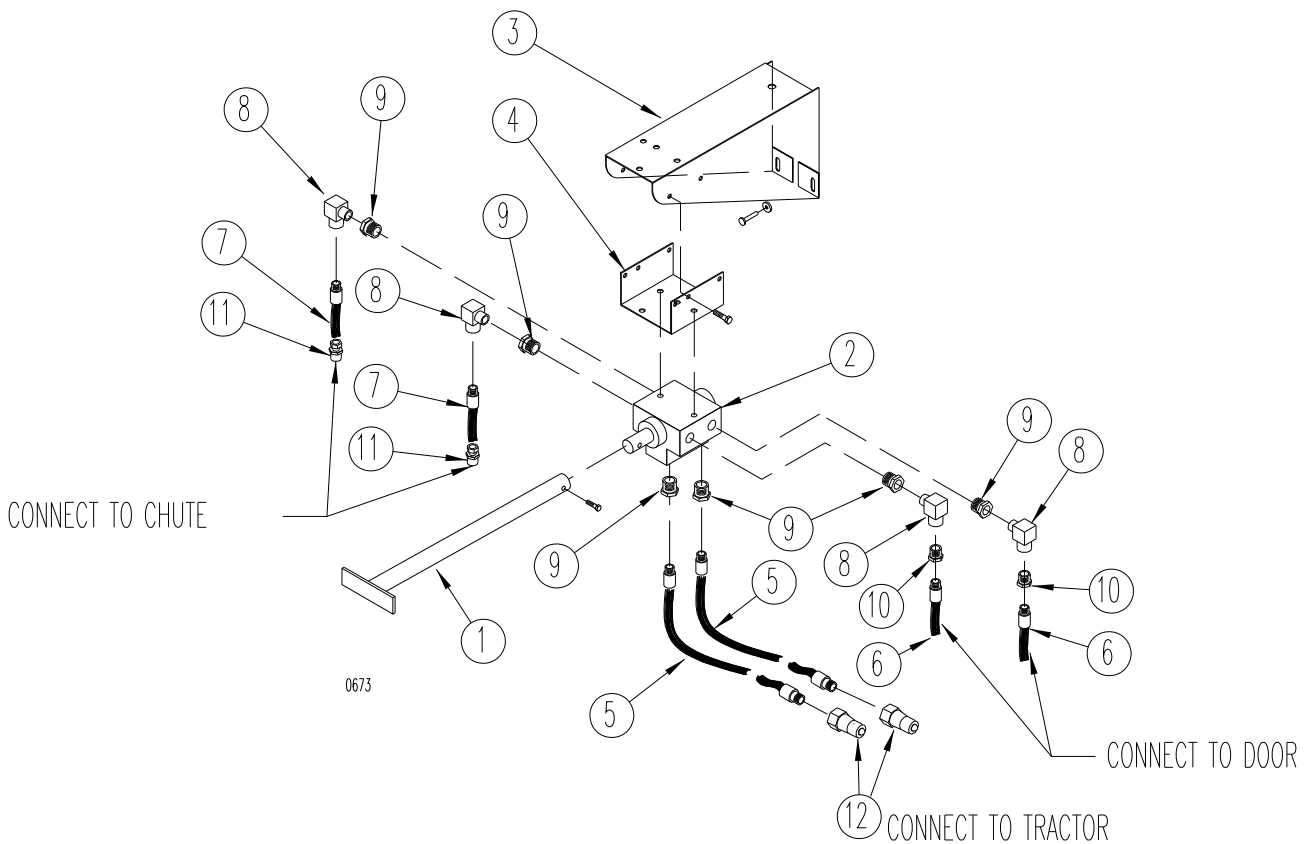
<sup>B</sup> Older 3 auger discharge chutes used a 50-B-18 sprocket P/N 132-701.

**Selector Valve - Power Chute Option**

REF	PART NO	QTY	DESCRIPTION
1	101-791	1	Control Handle Assy; Mtg Hrd: 1/4" x 1 1/2" Bolt & LN
2	101-891	1	Selector Valve Assy (Seal Kit #172-784) Mtg Hrd: 3/8" x 3" B, FW, LW, Nut (2 ea)
3	136-726	1	Selector Valve mount; Mtg Hrd; 5/16" x 1" Bolt, FW, LW, Nut (2 ea)
4	134-136	1	Mounting Bracket; Mtg Hrd; 5/16" x 3/4" Bolt, LW, Nut (4 ea)
5	171-426	2	Hyd Hose; 1/2" x 93" Long 1/2" Ends, To Tractor
6	171-998	2	Hyd Hose; 1/4" x 118" Long 3/8" Ends, To Door
7	171-189	2	Hyd Hose; 1/2" x 108" Long 1/2" Ends, To Chute
8	171-136	4	Connector; Elbow 1/2" - 90 Degree
9	171-430	6	Connector; Reducer 3/4" To 1/2"
10	170-235	2	Connector; Reducer 1/2" To 3/8"
11	170-513	2	Connector; Swivel 1/2" Straight
12	175-536	2	Pioneer Quick Coupler

**FIELD INSTALLATION NOTE:**

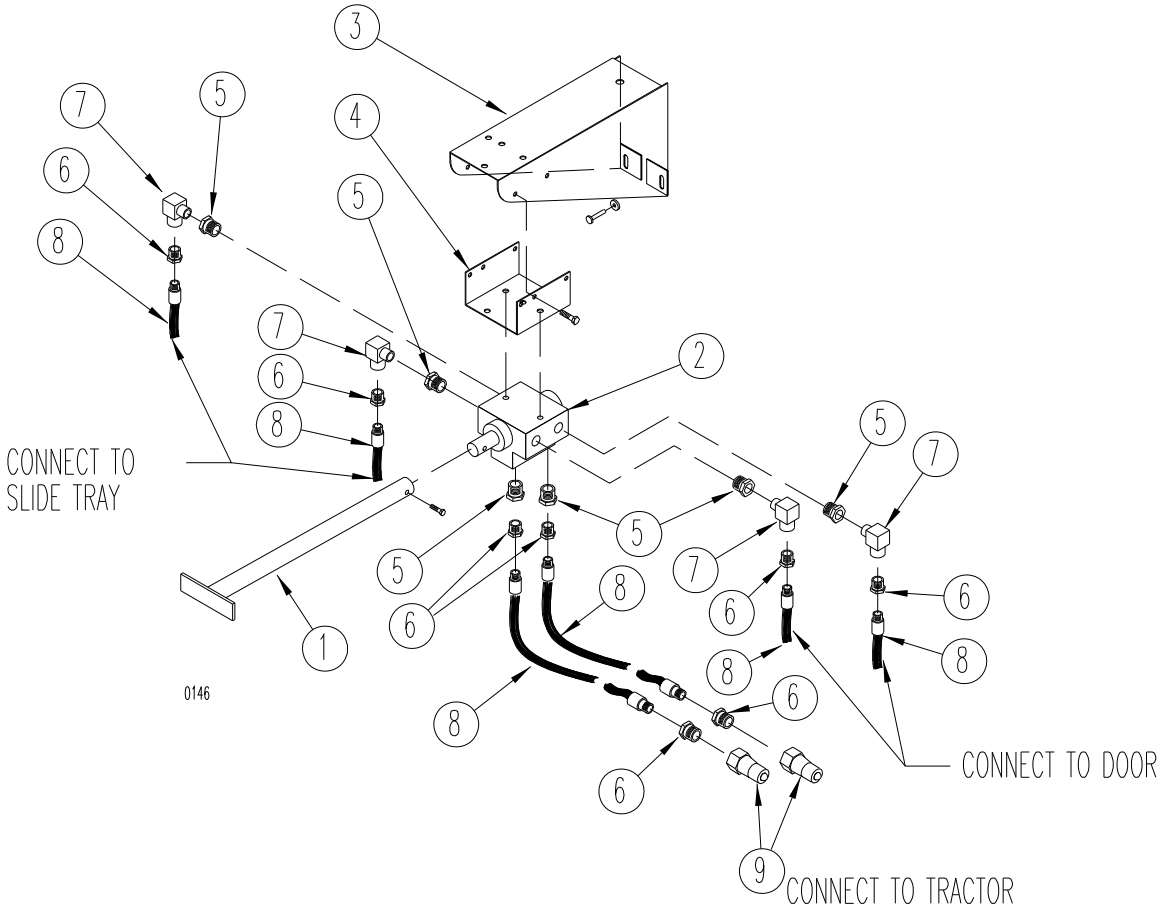
For field installation use the above parts except (1) 171-426, (2) 171-998 & (2) 170-235.



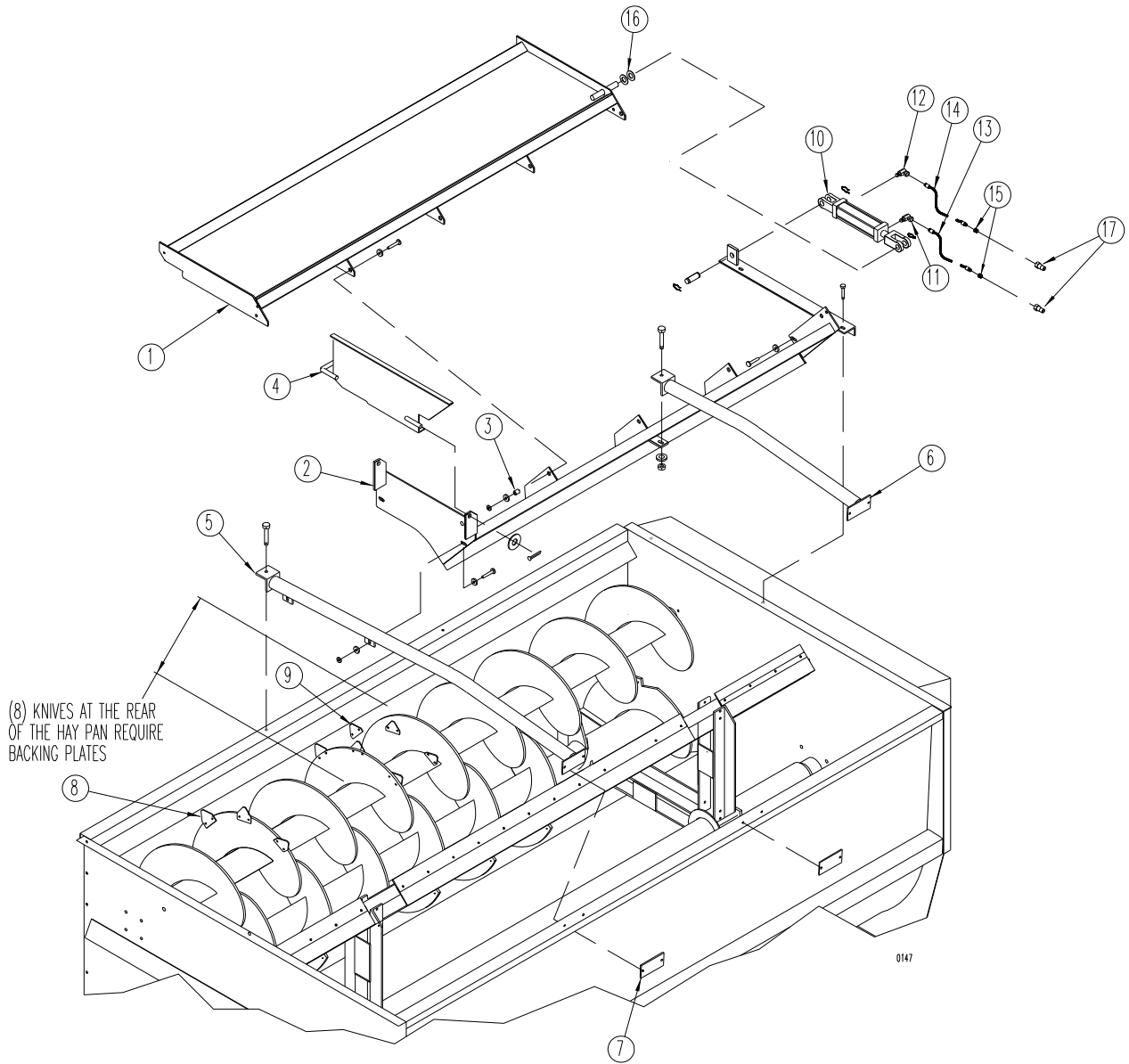
**Selector Valve - Slide Tray Option**

REF	PART NO	QTY	DESCRIPTION
1	101-791	1	Control Handle Assy Mtg Hrd: 1/4" x 1 1/2" Bolt & LN
2	101-891	1	Selector Valve Assy (Seal Kit #172-784) Mtg Hrd: 3/8" x 3" B, FW, LW, & Nut (2ea)
3	136-726	1	Selector Valve mount; Mtg Hrd; 5/16" x 1" Bolt, FW, LW, Nut (2 ea)
4	134-136	1	Mounting Bracket; Mtg Hrd; 5/16" x 3/4" Bolt, LW, Nut (4 ea)
5	171-430	6	Connector; Reducer 3/4" To 1/2"
6	170-235	6	Connector; Reducer 1/2" To 3/8"
7	171-136	4	Connector; Elbow 1/2" - 90 Degree
8	171-998	6	Hyd Hose; 1/4" x 118" Long 3/8" Ends
9	175-536	2	Pioneer Quick Coupler

**FIELD INSTALLATION NOTE:**  
 For field installation use the above parts except (4) 170-235 & (4) 171-998.



**HAY MAXX Parts**

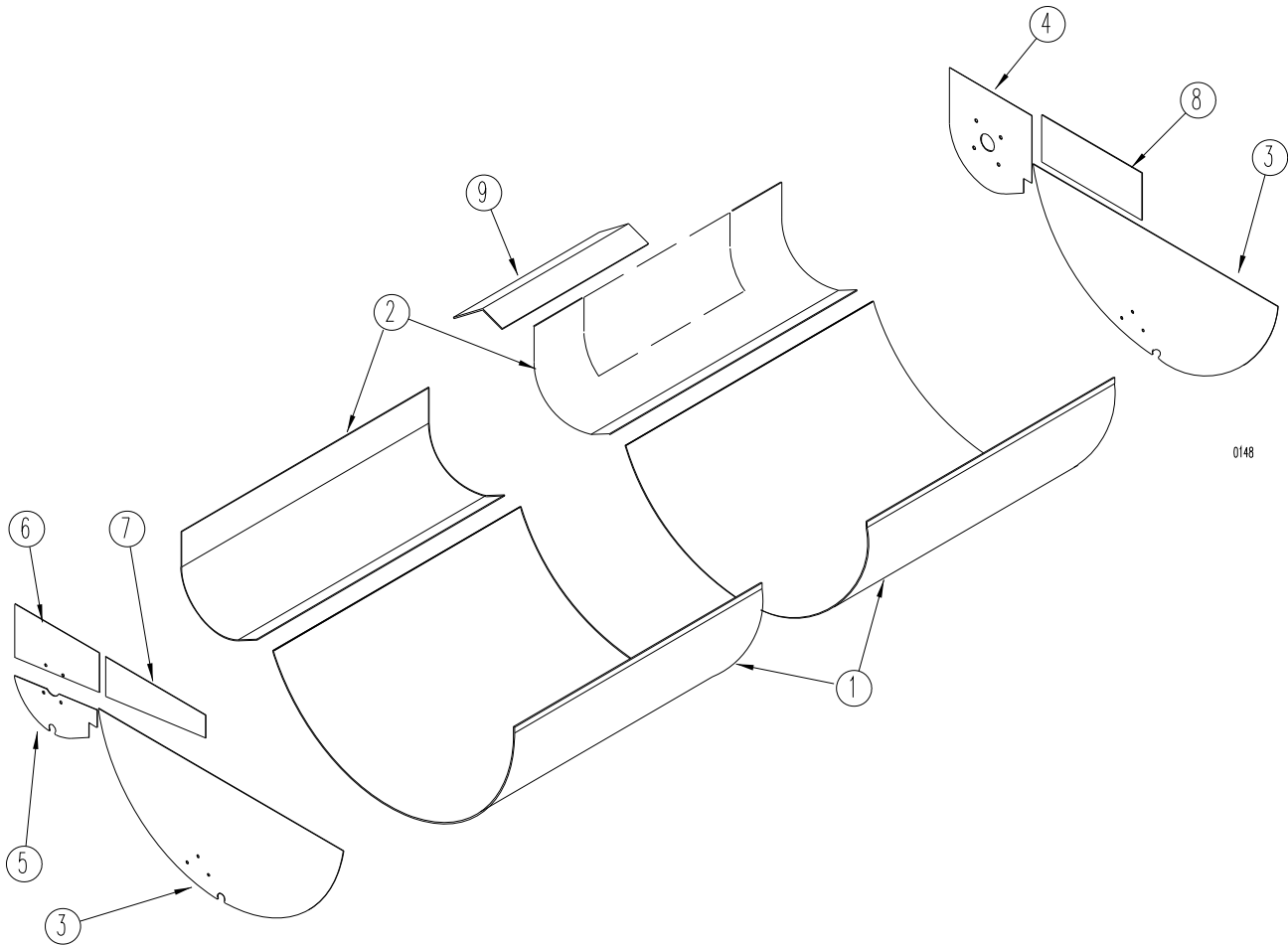


**HAY MAXX Parts**

REF	PART NO	QTY	DESCRIPTION
1	102-553	1	Upper HAY MAXX Attachment; Mtg Hrd: 1/2" x 1 1/2" B, LN (5ea.), FW (8ea.)
2	102-552	1	Lower HAY MAXX Attachment; Mtg Hrd: 1/2" x 1 1/4" Bolt,FW, LN (3 ea.) 1/2" x 1 1/2" Bolt, LN (2 ea.), FW, (4 ea.)
3	134-771	5	Pivot Bushing
4	102-554	1	Haypan Backstop; Mtg Hrd: 3/4" FW, 3/16" x 2" Cotter Pin
5	102-555	1	Bucket Guard; Mtg Hrd: 1/2" x 1 1/2" B, FW, LN (1ea.)
6	102-556	1	Bucket Guard; Mtg Hrd: 1/2" x 1 1/2" B, FW, LN (1ea.)
7	134-012	2	Bucket Guard Mount; Mtg Hrd: 3/8" x 1 1/4" B, LW, Nut (2ea.)
8	174-558	50 <sup>A</sup>	Auger Knife <b>(3025) (Quantity listed is total for HAY MAXX option)</b> Mtg Hrd: (Knife only) 5/16" x 3/4" Bolt, LW & Nut (2 ea.) Mtg Hrd: (Knife with back plate)5/16" x 1" Bolt, LW & Nut (2 ea. Knife)
		60 <sup>A</sup>	Auger Knife <b>(3030) (Quantity listed is total for HAY MAXX option)</b> Mtg Hrd: (Knife only) 5/16" x 3/4" Bolt, LW & Nut (2 ea.) Mtg Hrd: (Knife with back plate)5/16" x 1" Bolt, LW & Nut (2 ea. Knife)
9	136-921	8	Backing Plate
10	173-273	1	Hydraulic Cylinder; 2" Dia. x 10" Stroke, (Seal Kit # 170-075)
11	171-030	1	90 Deg. Swivel Adapter; 3/8"
12	171-723	1	90 Deg. Swivel Restrictor; 3/8"
13	170-468	1	Hydraulic Hose; 1/4" x 162"
14	170-471	1	Hydraulic Hose; 1/4" x 170"
15	170-235	2	Reducer Fitting; 1/2" To 3/8"
16	170-122	A/R	Spacer Washer; 1" SAE Flat (6 to 9 required)
	172-442	1	Electric Switching Valve (Optional) Mounted On Tractor
17	175-536	2	Pioneer Quick Coupler

A: Auger knife quantities listed are the total number of knives needed for the HAY MAXX option. Knife quantity includes standard factory installed knives on upper auger. Only order quantity needed to total the amount of knives listed above for a field installation.

**Repair Liner Parts**

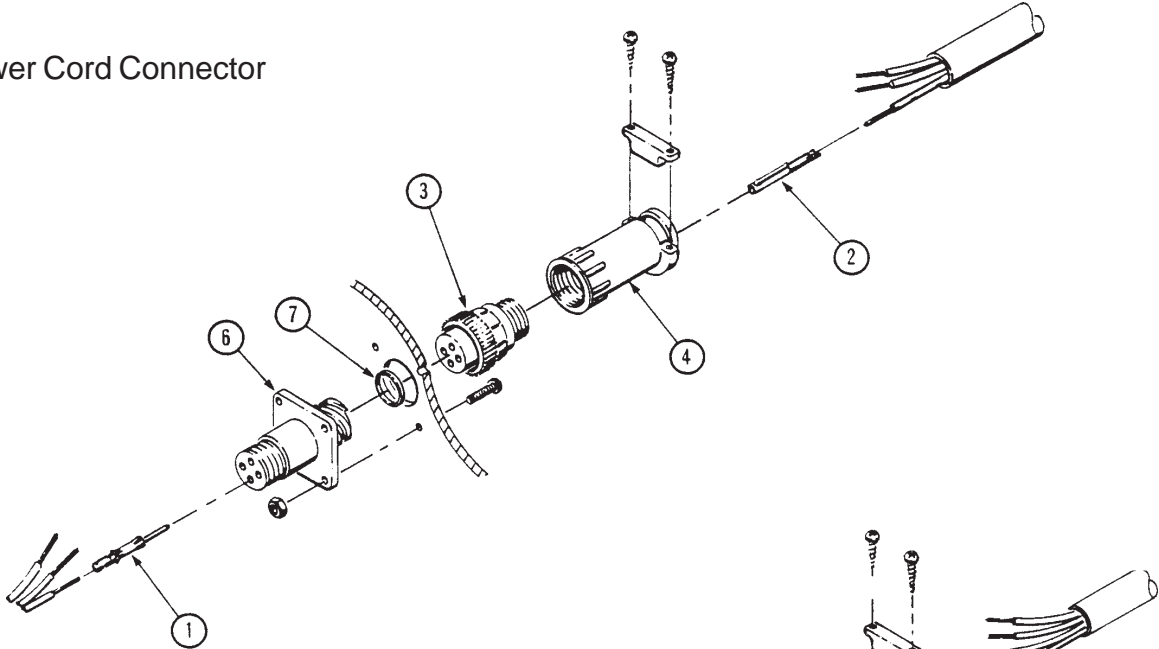


0148

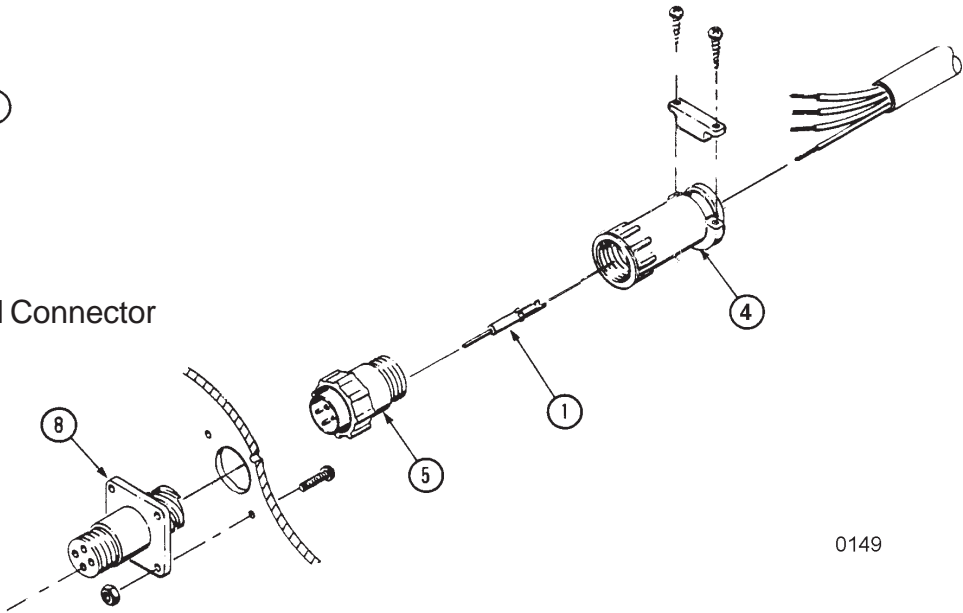
REF	PART NO		QTY	DESCRIPTION
	Hot Roll Steel	Stainless Steel		
1	136-889	136-890	2	Reel Liner <b>(3025 only)</b>
	136-873	136-874	2	Reel Liner <b>(3030 only)</b>
2	136-887	136-888	2	Auger Liner <b>(3025 only)</b>
	136-881	136-882	2	Auger Liner <b>(3030 only)</b>
3	136-883	136-884	2	Reel End Liner
4	136-875	136-876	1	Auger End Liner <b>(Front)</b>
5	136-877	136-878	1	Auger End Liner <b>(Lower Rear)</b>
6	136-879	136-880	1	Auger End Liner <b>(Upper Rear)</b>
7	136-885	136-886	1	Rear Upper Liner
8	134-705	136-891	1	Front Upper Liner
9	134-716	134-980	1	Door Opening Liner

**Scale Connector Repair Parts**

**Power Cord Connector**



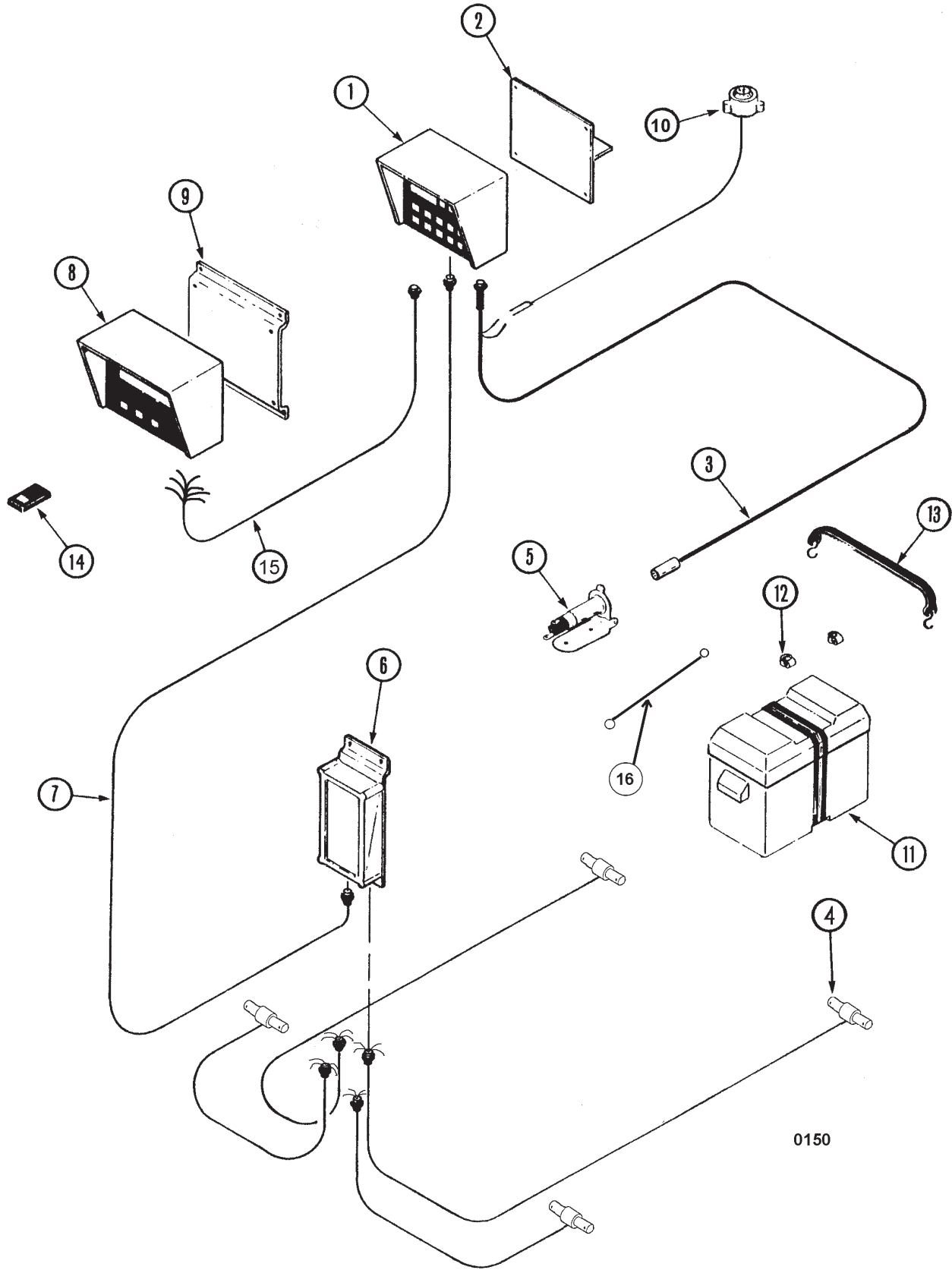
**Junction Box Cord Connector**



0149

REF	PART NUMBER	QTY	DESCRIPTION
1	173-211	4	Contact Pin
2	173-212	4	Contact Socket
	173-216	1	Pin Extraction Tool <i>(not shown)</i>
3	173-213	1	Power Cord Connector
	174-923	1	Nut, power cord
4	173-214	1	Power Cord Strain Relief
5	173-215	1	Junction Box Cord Connector
	174-923	1	Nut, power cord
6	173-217	1	Power Connector Chassis
7	173-218	1	Seal for Power Connector Chassis
8	173-219	1	Load Cell Connector Chassis
9	171-960	1	Cord Splice Kit <i>(not shown)</i>

Scale Parts



0150

**Scale Parts**

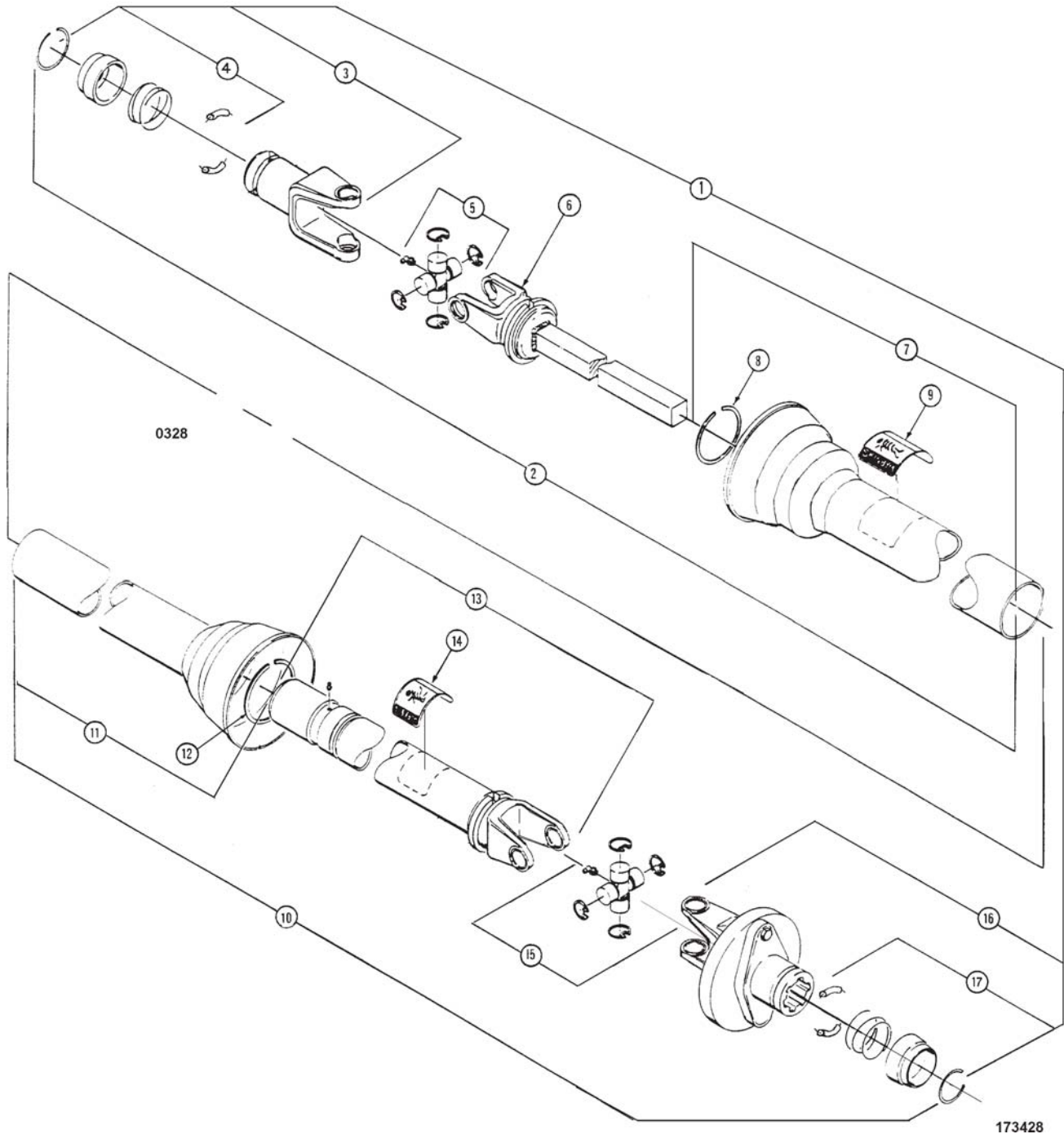
REF	PART NO	QTY	DESCRIPTION
1	172-128	1	Digi-Star Model EZ-150 Basic Indicator
	172-800	1	Digi-Star Model EZ-View 150 Indicator, 1.7" Display
	172-130	1	Digi-Star Model EZ-210 Indicator
	174-501	1	Digi-Star Model EZ-210 Indicator (with serial port)
	172-500	1	Digi-Star Model EZ-320 Indicator
	174-502	1	Digi-Star Model EZ-320 Indicator (with serial port)
	173-225	1	Weigh-Tronix Model 615 Basic Indicator
	173-226	1	Weigh-Tronix Model 615 Basic Indicator, 2" Display
	173-227	1	Weigh-Tronix Model 715 Indicator
	174-503	1	Weigh-Tronix Model 715 Indicator (with port)
	173-228	1	Weigh-Tronix Model 1015 Indicator
	174-504	1	Weigh-Tronix Model 1015 Indicator (with port)
			Mtg Hrd for all indicators: 1/4" x 3/4" Bolt, Fw, Lw & Nut (2 ea)
2	101-835	1	Indicator Mount Mtg Hrd: Spring (170-238) 3/8" x 2" Bolt, Fw & Ln
3	172-354	1	Power Cord Assy
4	172-138*	4	Weigh Bar; 2 1/8" Dia (J-star-black finish)
	173-230*	4	Weigh Bar; 2 1/8" Dia (Weigh-tronix-white finish)
5	170-415	1	Plug - Tractor Mount
6	103-052	1	Junction Box W/15' cable; #10 x 1" SMS (2 ea)
7	173-156	1	15' Replacement Junction box cable
	172-165	1	30' Junction box extension cable (not shown)
	172-166	1	10' Junction box extension cable (not shown)
<b>Optional Items:</b>			
8	172-803	1	Digi-Star EZ-R Remote, 1" Display w/ 25' Cord
	172-801	1	Digi-Star EZ-View Remote, 1.7" Display w/ 25' Cord
	172-804	1	Digi-Star EZ-R Remote, 1" Display w/ Transmitter & 25' Cord
	172-802	1	Digi-Star EZ-View TR Remote, 1.7" Display w/ Transmitter & 25' Cord
	174-505	1	Weigh-Tronix 712 Remote, 1" Display w/ 30' Cord
	174-506	1	Weigh-Tronix 712XL Remote, 2" Display w/ 30' Cord
	174-507	1	Weigh-Tronix 1012 Remote, 1" Display w/ 30' Cord
9	134-409	1	Remote Indicator Mount, Mtg Hrd: 5/16 x 3/4 Bolt, Lw, Nut (2 ea), 1/4 x 3/4 Bolt, Fw, Lw, Nut (2ea)
10	101-917	1	Digi-Star Alarm Horn Assembly Mtg Hrd: #6 x 3/4" Bolt, LW & Nut (2 ea)
	101-918	1	Weigh-tronix Alarm Horn Assembly Mtg Hrd: #6 x 3/4" Bolt, Lw & Nut (2 ea)
11	171-158	1	Battery Box
12	171-380	2	Battery Terminals
13	171-936	1	Battery Hold-Down Strap
14	172-143	1	Digi-Star hand held transmitter
	172-350	1	Weigh-Tronix hand held transmitter
15	174-719	1	Cable; EZ-R Remote Scale
<b>Service Tools:</b>			
	172-386	1	Precision Calibrator For Scale Indicators
	171-960		Cord Splice Kit

\* All (4) weigh bars must be the same type to properly function and will work with either the J-Star or Weigh-tronix indicator.

3025/3030TR 005800-R031411

### PTO Driveline - 540 RPM - 6 Spline

(540 RPM - 6 Spline - 1-3/8" Yoke)



**PTO Driveline - 540 RPM - 6 Spline***(540 RPM - 6 Spline - 1-3/8" Yoke)*

REF	PART NO	QTY	DESCRIPTION
1	173-428	1	Driveline Complete
2	171-751	1	Joint and Shaft Half with Guard
3	172-018	1	Yoke Assembly
4	172-019	1	Safety Slide Lock Repair Kit
5	170-720	1	Cross and Bearing Kit
6	171-753	1	Yoke and Shaft
7	171-756	1	Outer Guard
8	170-220	1	Nylon Repair Kit
9	171-550	1	Safety Decal
10	173-427	1	Joint and Tube Half with Guard
11	171-755	1	Inner Guard
12	170-220	1	Nylon Repair Kit
13	171-754	1	Yoke Tube and Slip Sleeve
14	171-799	1	Safety Decal
15	170-720	1	Cross and Bearing Kit
16	172-926	1	Shear Bolt Assembly
	175-073	1	Shear Bolt; 1/4" x 2" ( <i>grade 8</i> )
	170-069	1	Lock Nut; 1/4" ( <i>grade 5</i> )
17	172-019	1	Safety Slide Lock Repair Kit

**Decals**

The following decals are listed below for your convenience.  
Use the operator's manual for decal location, part number and ordering.

**Unit Decals:**

<b>PART NO</b>	<b>QTY</b>	<b>DESCRIPTION</b>
174-645	1	Complete Set Of Decals <b>For 3025</b>
174-648	1	Complete Set Of Decals <b>For 3030</b>
170-490	1	IMPORTANT - Reduce Engine Speed . . .
170-849	3	WARNING - Stay Clear Of . . .
170-893	1	SMV Symbol
171-712	1	NOTICE - Retighten Set Screws . . .
171-748	1	Door Gauge
171-820	4	DANGER - Rotating Auger Inside . . .
171-911	1	NOTICE - Operating Precautions
171-913	1	WARNING - Do Not Operate . . .
171-915	2	DANGER - Shield Missing . . .
171-947	4	DANGER - Do Not Hand Load . . .
171-948	1	BEWARE - If Mixer . . .
171-949	1	"U.S. Patent No. . . ."
174-687	2	Decal; Amber Reflector
174-686	2	Decal; Red Reflector
172-292	1	Mixer Full Line
172-786	1	DANGER - Rotating Parts . . .
172-820	1	WARNING - Lifting Instructions . . .
172-883	1	Oil Level Plug
173-040	1	CAUTION PTO Operation. . .
173-041	1	Shear Bolt Information. . .
173-044	1	Made in Wisconsin. . .
173-078	1	DANGER Shield Missing. . .
173-445	2	"3025" <b>For 3025 Only</b>
173-446	2	"3030" <b>For 3030 Only</b>
173-447	2	"REEL AUGGIE"
173-448	9ft	Stripe <b>For 3025 Only</b>
	13ft	Stripe <b>For 3030 Only</b>
174-514	3	"KUHNNIGHT"

**Power Chute And Slide Tray Decals:**

171-914	2	WARNING - Stay Clear Of Chute . . .
171-915	1	DANGER - Shield Missing. . .(Power Chute option only)
174-687	1	Decal; Amber Reflector
174-686	1	Decal; Red Reflector

**PTO Driveline Decals:**

171-550	1	DANGER, PTO . . .
171-599	1	Do Not Exceed . . .
171-799	1	DANGER - Shield Missing

**HAY MAXX Decals:**

**Paint List**

170-366 Kuhn Knight Yellow Aerosol Can  
 170-812 Kuhn Knight Yellow Quart Can  
 170-813 Kuhn Knight Yellow Gallon Can  
 170-367 Kuhn Knight Red Aerosol Can  
 170-814 Kuhn Knight Red Quart Can  
 170-815 Kuhn Knight Red Gallon Can

**Optional Kits**  
**Safety Chain For Towed Equipment****PART NO 172-195**

This chain is designed to retain the connection between the towing and towed machines in the event of separation of the primary attaching system. It should be used whenever the unit is transported on the highway.

**Light Kit For Towed Equipment**

This light kit is designed for lighting and marking of agricultural field equipment whenever the equipment is on a highway. This kit is pre-assembled, and it includes mounting hardware.

<b>PART NO</b>	<b>QTY</b>	<b>DESCRIPTION</b>
300-007	1	Complete Light Kit - Assembled
005448	1	Installation Instructions
141-496	2	Sheet, Light Bracket
174-675	1	Assy, tow light harness with lights and plugs
174-674	2	Red Light
174-673	2	Amber Light
174-725	4	Rubber grommet
174-775	1	Harness assy
174-724	4	Plug
172-110	1	7 Pin Female Connector

**Hardware Part Number Listing**

All fasteners are NC thread, Grade 5 unless otherwise specified.

**HEX HEAD BOLTS**

Size	Part No
1/4 x 1/2	173-279
1/4 x 3/4	170-803
1/4 x 7/8	171-094
1/4 x 1	170-310
1/4 x 1-1/2	170-068
1/4 x 2	172-986
1/4 x 2 (Grade 8)	175-073
1/4 x 2-3/4	171-203
1/4 x 3	171-403
1/4 x 3 1/2	173-640
1/4 x 4	173-505
5/16 x 5/8	170-532
5/16 x 3/4	170-262
5/16 x 3/4 (Stainless steel)	174-787
5/16 x 7/8	170-256
5/16 x 1	170-027
5/16 x 1-1/4 (Full thread)	170-188
5/16 x 1-1/2	170-372
5/16 x 1-3/4	170-263
5/16 x 2	172-987
5/16 x 2-1/2	170-369
5/16 x 3	170-295
5/16 x 3-1/4	171-639
5/16 x 3-1/2	173-748
5/16 x 4	170-293
5/16 x 4-1/2	170-294
5/16 x 5 (Grade 8)	172-983
5/16 x 5-1/2 (Grade 8)	172-952
3/8 x 3/4	170-439
3/8 x 3/4 (Stainless steel)	174-788
3/8 x 7/8	170-268
3/8 x 7/8 (soc. hd.capscrew)	172-044
3/8 x 1	170-054
3/8 x 1-1/4	170-005
3/8 x 1-1/4 (Stainless steel)	174-917
3/8 x 1-1/2	170-368
3/8 x 1-3/4	172-383
3/8 x 2	170-245
3/8 x 2-1/4	170-320
3/8 x 2-1/2	170-257
3/8 x 2-1/2 (Full thread)	170-128
3/8 x 2-1/2 (Lag)	171-775
3/8 x 3	170-380
3/8 x 3-1/2	170-292
3/8 x 4	170-877
3/8 x 4-1/4 (Black oxide)	171-813
3/8 x 4-1/2	170-519
3/8 x 5	170-493
3/8 x 5-1/2	174-196
3/8 x 5-1/2 (Full thread)	170-593
3/8 x 6	174-304
3/8 x 6-1/2	171-291
3/8 x 7	172-587
7/16 x 3/4	170-265
7/16 x 1	170-032
7/16 x 1-1/4	170-354
7/16 x 1-1/4 (Grade 8)	174-216
7/16 x 1-1/2	170-059
7/16 x 2	170-356
7/16 x 2-1/2	170-379
7/16 x 3	170-270
7/16 x 5-1/2	170-377
7/16 x 6	170-378
1/2 x 3/4	171-252
1/2 x 1	170-149
1/2 x 1-1/4	170-373

1/2 x 1-1/2	170-002
1/2 x 1-1/2 (Grade 8)	172-951
1/2 x 1 3/4	171-774
1/2 x 2	171-802
1/2 x 2-1/4	172-387
1/2 x 2-1/2	170-885
1/2 x 2-1/2 (Full thread)	171-099
1/2 x 2-3/4	172-007
1/2 x 3	170-168
1/2 x 3-1/2	170-167
1/2 x 3-1/2 (Grade 8)	172-950
1/2 x 4	173-111
1/2 x 4 (Full thread)	171-509
1/2 x 5	171-412
1/2 x 6	173-506
1/2 x 6 (Grade 8)	174-944
1/2 x 6-1/2	173-711
1/2 x 7	174-328
1/2 x 7-1/2	175-107
1/2 x 8-1/2	170-504
1/2 x 11	170-506
9/16 x 1	173-699
9/16 x 1-1/4	173-700
9/16 x 1-1/2	173-701
9/16 x 2	172-219
5/8 x 1	171-087
5/8 x 1-1/4	171-366
5/8 x 1-1/2	170-153
5/8 x 1-3/4 (Full thread)	170-030
5/8 x 2	170-009
5/8 x 2 (Full thread)	171-772
5/8 x 2-1/4	173-009
5/8 x 2-1/2	172-381
5/8 x 2-1/2 (Full thread)	170-129
5/8 x 2-3/4	172-356
5/8 x 3	170-258
5/8 x 3-1/2	170-038
5/8 x 4	170-371
5/8 x 4-1/2	170-067
5/8 x 5	170-065
5/8 x 5-1/2	172-421
5/8 x 6	170-381
5/8 x 6-1/2	173-777
5/8 x 7-1/2	173-019
5/8 x 9-1/2	171-039
3/4 x 1-1/2	173-507
3/4 x 2	171-768
3/4 x 2 (Full thread)	170-058
3/4 x 2 (Grade 8)	171-877
3/4 x 2-1/4	171-275
3/4 x 2-1/2	170-374
3/4 x 2-1/2 (Grade 8)	175-055
3/4 x 3	170-014
3/4 x 3 UNF	173-776
3/4 x 3-1/2	170-195
3/4 x 3-1/2 (Grade 8)	171-899
3/4 x 4	170-419
3/4 x 4 (Grade 8) UNF	173-579
3/4 x 4-1/2	170-846
3/4 x 4-1/2 (Grade 8)	173-039
3/4 x 4-1/2 (Grade 8) UNF	173-588
3/4 x 5	173-508
3/4 x 5 UNF	173-510
3/4 x 5-1/2 (Grade 8) UNF	173-514
3/4 x 6	171-116
3/4 x 6 UNF	173-511
3/4 x 6 (Grade 8)	173-231
3/4 x 7	173-745

3/4 x 7 UNF	173-747
3/4 x 7-1/2	175-004
3/4 x 8	173-509
7/8 x 2-1/4	172-892
7/8 x 3	172-002
7/8 x 3-1/2	173-020
7/8 x 4	173-299
7/8 x 4 UNF	171-092
7/8 x 6-1/2	173-774
7/8 x 7	173-749
7/8 x 7 UNF	174-097
7/8 x 8	173-750
7/8 x 8 UNF	173-515
1 x 3-1/2	173-021
1 x 4	175-119
1 x 4 (Grade 8)	175-248
1 x 7 UNF	173-516
1 x 8	174-723
1 x 8 (grade 8) UNF	173-713
1-1/4 x 4-1/2 (grade 8)	175-003
M8 x 16MM (Grade 8.8)	174-610
M8 x 20MM (Grade 8.8)	175-193
M8 x 25MM (Grade 8.8)	174-900
M10 x 22MM (Grade 8.8)	175-016
M10 x 25MM (Grade 8.8)	173-344
M12 x 25MM (Grade 8.8)	171-566
M12 x 35MM (Grade 8.8)	175-020
M12 x 40MM (Grade 12.9)	175-190
M12 x 45MM (Grade 10.9)	174-911
M14 x 30MM (Grade 8.8)	173-518

**SELF TAPPING SCREW**

1/4 x 3/4	174-874
-----------	---------

**CARRIAGE BOLTS**

1/4 x 1-1/4 (Grade 2)	170-311
1/4 x 1-1/2 (Grade 2)	170-355
1/4 x 2 (Grade 2)	170-299
1/4 x 2-1/2 (Grade 2)	171-394
1/4 x 2-3/4 (Grade 2)	170-508
1/4 x 3	170-509
5/16 x 1 (Grade 2)	170-370
5/16 x 1-1/2 (Grade 2)	170-296
5/16 x 2-1/2 (Grade 2)	171-395
5/16 x 5-1/2 (Grade 2)	170-494
3/8 x 3-1/2 (Grade 2)	171-283
3/8 x 4-1/2 (Grade 2)	170-191
3/8 x 5 (Grade 2)	170-495
3/8 x 6-1/2 (Grade 2)	171-174
3/8 x 8 (Grade 2)	170-297
3/8 x 13 (Grade 2)	170-298
3/8 x 13-1/2 (Grade 2)	170-300
1/2 x 1-1/2 (Grade 5)	174-918
1/2 x 6-1/2 (Grade 2)	171-098
1/2 x 9 (Grade 2)	171-255
5/8 x 2	175-110
5/8 x 2-1/2 (Grade 5)	174-790

**PLOW BOLTS**

5/8 x 2	174-767
3/4 x 2-1/2	174-948

**TRUSS HEAD BOLTS**

#6-32 x 3/4	172-416
#6-32 x 1	173-079
#8-32 x 1-1/2	171-210
#10-32 x 3/4	171-604
#10-32 x 1	172-882
1/4 x 3/4	170-193
1/4 x 1	170-194
5/16 x 1	170-117

## Hardware Part Number Listing

### SET SCREWS (Socket Head)(Cup Point)

1/4 x 1/4 .....	170-247
1/4 x 5/8 .....	172-985
5/16 x 1/4 .....	170-993
5/16 x 5/16 .....	170-248
5/16 x 5/16 UNF .....	170-825
5/16 x 3/8 UNF .....	173-367
5/16 x 1/2 .....	170-254
5/16 x 5/8 UNF .....	170-456
5/16 x 1 (Sq hd) .....	173-610
5/16 x 1-1/2 .....	172-917
3/8 x 1/4 .....	170-856
3/8 x 3/8 .....	170-151
3/8 x 1/2 .....	170-857
3/8 x 1/2 UNF .....	171-469
3/8 x 3/4 .....	174-190
3/8 x 3/4 (Sq hd) .....	170-290
3/8 x 1 .....	170-021
3/8 x 1 (Sq hd) .....	173-609
3/8 x 1 (Sq hd) (Dog pt) .....	171-551
7/16 x 7/16 .....	170-288
7/16 x 1 (Sq hd) .....	170-147
1/2 x 5/8 .....	170-249
1/2 x 1 .....	170-438
1/2 x 1-1/4 (half dog point) .....	171-085
5/8 x 5/8 .....	170-250
3/4 x 3/4 (Sq hd) (Dog pt) .....	170-251

### HEX NUTS

#6-32 .....	172-418
#10-32 .....	171-606
1/4 .....	170-125
5/16 .....	170-119
3/8 .....	170-007
7/16 .....	170-062
7/16 (Grade 8) UNF .....	174-217
1/2 .....	170-004
9/16 .....	173-702
5/8 .....	170-011
3/4 .....	170-017
3/4 UNF .....	170-159
3/4 (Grade 8) UNF .....	173-520
7/8 .....	171-776
1 .....	173-022
1 UNF .....	173-714
1 (Grade 8) .....	175-247
1 (Grade 8) UNF .....	173-519
1-1/8 UNF .....	174-095
1-1/4 UNF .....	170-130
1-1/4 (Grade 8) .....	175-006
M8 x 1.25MM .....	172-949
M30 x 1.5MM .....	174-902
M50 x 1.5MM .....	175-200

### LOCK NUTS

#6-32 .....	174-188
#10-32 .....	174-073
1/4 .....	170-069
5/16 .....	170-137
3/8 .....	170-047
7/16 .....	170-239
1/2 .....	170-042
1/2 UNF .....	170-566
1/2 (Grade 8) .....	171-671
9/16 .....	172-220
5/8 .....	170-031
3/4 .....	170-185
3/4 (Grade 8) .....	171-900

3/4 (Grade 8) UNF .....	173-578
7/8 .....	173-069
7/8 UNF .....	171-093
1 .....	174-928
1 UNF .....	170-527
M45 x 1.5MM .....	175-199
M50 x 1.5MM .....	175-197
<b>JAM NUTS</b>	
1/4UNF .....	171-386
5/16 .....	173-521
3/8 .....	170-022
7/16 .....	170-046
1/2 .....	170-036
5/8 .....	170-037
3/4 .....	170-035
1 .....	174-927

### FLAT WASHERS

#10 .....	171-525
1/4 .....	170-301
1/4 Heavy .....	171-083
1/4 Fender .....	173-672
5/16 .....	170-127
5/16 Fender .....	173-811
3/8 .....	170-244
3/8 Heavy .....	170-302
3/8 Aluminum .....	173-900
7/16 .....	170-138
1/2 .....	170-040
1/2 (Grade 8) .....	172-984
9/16 .....	173-693
5/8 .....	170-066
5/8 (Grade 8) .....	173-581
3/4 .....	170-015
7/8 .....	173-298
7/8 Heavy .....	170-131
1 .....	170-122
1-1/4 .....	170-928

### LOCK WASHERS

#6 .....	172-417
#10 .....	171-605
1/4 .....	170-124
5/16 .....	170-118
3/8 .....	170-006
7/16 .....	170-061
1/2 .....	170-003
9/16 .....	173-692
5/8 .....	170-010
3/4 .....	170-016
3/4 External Tooth .....	174-793
7/8 .....	172-003
1 .....	171-021
1-1/4 .....	175-005

### ZERKS

1/8 NPT .....	170-865
1/8 NPT-45 Deg .....	170-864
1/8 NPT-65 Deg .....	170-215
1/8 NPT-90 Deg .....	170-866
3/16 drive in .....	174-124
1/4-28 .....	170-023
1/4-28 - 45 Deg .....	170-148
1/4-28 - 90 Deg .....	170-049
1/4 NPT .....	170-277
1/4 NPT - 45 Deg .....	174-130

### COTTER PINS

1/16 x 1/2 .....	170-992
3/32 x 3/4 .....	170-364
1/8 x 1 .....	170-045
1/8 x 1-1/4 .....	170-033
1/8 x 1-1/2 .....	170-382
5/32 x 1 .....	170-421
5/32 x 1-1/2 .....	170-236
5/32 x 3 .....	170-135
3/16 x 1-1/4 .....	170-991
3/16 x 2 .....	170-115
1/4 x 1-1/2 .....	170-521
1/4 x 2 .....	170-056
1/4 x 2-1/2 .....	173-961

### ROLLER CHAIN

#### CONNECTOR LINKS

#50 .....	170-088
#50-2R .....	170-094
#60 .....	170-089
#60-2R .....	170-095
#60H .....	171-102
#80 .....	170-090
#80H .....	170-821
#100 .....	170-091
#100H .....	171-969
#120 .....	170-092
#140 .....	170-093
#140H .....	173-552
#160 .....	170-888

#### OFFSET LINKS

#50 .....	170-096
#50-2R .....	170-102
#60 .....	170-097
#60-2R .....	170-103
#60H .....	171-103
#80 .....	170-098
#80H .....	170-820
#100 .....	170-099
#100H .....	172-145
#120 .....	170-100
#140 .....	170-101
#140H .....	173-553
#160 .....	170-887

#### ROLLER LINKS

#50 .....	171-415
#60 .....	171-416
#80 .....	171-417
#80H .....	170-795
#100 .....	171-418
#100H .....	172-146
#120 .....	171-419
#140 .....	171-420
#160 .....	171-421

**Part Number Index**

<b>Symbols</b>	103-918 ...19	136-844 ...7	...16, 17, 19, 23
005448 ...31	133-918 ...7	136-847 ...7	170-110 ...19
101-227 ...19	133-920 ...5	136-849 ...7	170-112 ...15
101-231 ...19	133-942 ...19	136-850 ...7	170-122 ...19, 23
101-736 ...19	133-943 ...19	136-855 ...11	170-125 ...15
101-741 ...15	133-952 ...19	136-858 ...7	170-142 ...11, 13
101-742 ...15	133-976 ...15	136-873 ...24	170-149 ...7
101-761 ...9	134-012 ...11, 13, 23	136-874 ...24	170-152 ...7
101-791 ...20, 21	134-086 ...9	136-875 ...24	170-153 ...32
101-818 ...9	134-136 ...20, 21	136-876 ...24	170-167 ...32
101-835 ...27	134-155 ...9	136-877 ...24	170-220 ...29
101-891 ...20, 21	134-352 ...11, 13	136-878 ...24	170-235
101-909 ...15	134-389 ...19	136-879 ...24	...16, 17, 19, 20, 21, 23
101-917 ...27	134-390 ...19	136-880 ...24	170-244 ...5
101-918 ...27	134-394 ...19	136-881 ...24	170-254 ...19
102-246 ...11	134-395 ...19	136-882 ...24	170-366 ...31
102-247 ...11, 13	134-409 ...27	136-883 ...24	170-367 ...31
102-249 ...7	134-547 ...11, 13	136-884 ...24	170-373 ...7
102-251 ...11, 13	134-705 ...24	136-885 ...24	170-415 ...27
102-253 ...13	134-716 ...24	136-886 ...24	170-468 ...16, 17, 23
102-260 ...11, 13	134-771 ...23	136-887 ...24	170-471 ...16, 17, 23
102-414 ...16	134-900 ...5	136-888 ...24	170-478 ...9, 17
102-430 ...17	134-980 ...24	136-889 ...24	170-490 ...30
102-437 ...5	135-555 ...11, 13	136-890 ...24	170-504 ...32
102-439 ...5	135-597 ...7	136-891 ...24	170-506 ...32
102-530 ...11, 13	135-598 ...7	136-921 ...23	170-509 ...15
102-531 ...11, 13	135-662 ...7	140-896 ...19	170-513 ...20
102-532 ...13	135-675 ...11, 13	140-897 ...19	170-518 ...9
102-533 ...13	135-676 ...11	140-902 ...19	170-776 ...29
102-534 ...13	135-677 ...13	140-933 ...19	170-800 ...9
102-535 ...11, 13	135-698 ...11, 13	140-937 ...19	170-812 ...31
102-537 ...11, 13	135-701 ...11, 13	140-938 ...19	170-813 ...31
102-538 ...13	136-042 ...7	141-496 ...31	170-814 ...31
102-539 ...15	136-076 ...5	141-608 ...19	170-815 ...31
102-541 ...11	136-260 ...7	170-009 ...32	170-849 ...30
102-542 ...11	136-326 ...16	170-014 ...32	170-859 ...19
102-543 ...11	136-360 ...16	170-030 ...32	170-865 ...5
102-544 ...11	136-363 ...16	170-038 ...32	170-893 ...30
102-545 ...11, 13	136-419 ...16	170-058 ...32	170-947 ...17
102-546 ...15	136-444 ...17, 19	170-065 ...32	171-039 ...32
102-552 ...23	136-454 ...5	170-067 ...32	171-087 ...32
102-553 ...23	136-492 ...16	170-129 ...32	171-275 ...32
102-554 ...23	136-678 ...17	170-195 ...32	171-366 ...32
102-555 ...23	136-726 ...20, 21	170-258 ...32	171-412 ...32
102-556 ...23	136-810 ...7	170-374 ...32	171-772 ...32
103-052 ...27	136-814 ...11, 13	170-023 ...15	171-008 ...19
103-702 ...19	136-815 ...11, 13	170-028 ...29	171-030
103-737 ...19	136-817 ...11, 13	170-053 ...7	...16, 17, 19, 23
103-755 ...19	136-819 ...13	170-056 ...15, 19	171-048 ...11, 13
103-756 ...19	136-820 ...11, 13	170-057 ...11, 13	171-049 ...11, 13
103-758 ...19	136-835 ...5	170-069 ...5	171-083 ...11
103-780 ...19	136-836 ...7	170-073 ...16	171-136 ...19, 20, 21
103-781 ...19	136-837 ...5	170-074 ...16	171-151 ...19
	136-843 ...15	170-075	171-158 ...27

## Part Number Index

171-186 ...19	171-920 ...11, 13	173-040 ...30	174-673 ...31
171-189 ...20	171-929 ...5	173-041 ...30	174-674 ...31
171-257 ...19	171-932 ...19	173-044 ...30	174-675 ...31
171-259 ...19	171-935 ...5	173-078 ...30	174-686 ...30
171-260 ...19	171-936 ...27	173-156 ...27	174-687 ...30
171-265 ...19	171-937 ...17, 19	173-164 ...7	174-711 ...15
171-330 ...19	171-940 ...19	173-211 ...25	174-719 ...27
171-380 ...27	171-947 ...30	173-212 ...25	174-724 ...31
171-409 ...7	171-948 ...30	173-213 ...25	174-725 ...31
171-414 ...19	171-949 ...30	173-214 ...25	174-737 ...15
171-426 ...20	171-960 ...25, 27	173-215 ...25	174-775 ...31
171-427 ...19	171-998 ...20, 21	173-216 ...25	174-886 ...19
171-430 ...20, 21	172-005 ...9, 17	173-217 ...25	174-923 ...25
171-542 ...29	172-024 ...5	173-218 ...25	174-927 ...19
171-544 ...29	172-110 ...31	173-219 ...25	174-928 ...19
171-550 ...29, 30	172-128 ...27	173-220 ...19	175-073 ...5
171-585 ...7	172-130 ...27	173-225 ...27	175-536 ...16, 17, 19,
171-599 ...30	172-138 ...27	173-226 ...27	20, 21, 23
171-607 ...7	172-143 ...27	173-227 ...27	180-630 ...5
171-610 ...15	172-165 ...27	173-228 ...27	300-007 ...31
171-611 ...15	172-166 ...27	173-230 ...27	
171-612 ...15	172-193 ...7	173-270 ...16, 17	
171-613 ...15	172-195 ...31	173-273 ...23	
171-614 ...15	172-229 ...15	173-309 ...29	
171-615 ...15	172-270 ...15	173-316 ...29	
171-666 ...19	172-284 ...15	173-318 ...29	
171-668 ...19	172-285 ...15	173-320 ...29	
171-712 ...30	172-292 ...30	173-442 ...9	
171-723 ...23	172-350 ...27	173-443 ...9	
171-748 ...30	172-354 ...27	173-444 ...9	
171-768 ...32	172-356 ...32	173-445 ...30	
171-799 ...29, 30	172-381 ...32	173-446 ...30	
171-814 ...15	172-386 ...27	173-447 ...30	
171-815 ...15	172-421 ...32	173-448 ...30	
171-820 ...30	172-442 ...23	173-449 ...15	
171-823 ...15	172-500 ...27	173-779 ...15	
171-824 ...15	172-751 ...9	173-916 ...15	
171-825 ...15	172-786 ...30	173-917 ...15	
171-826 ...15	172-800 ...27	173-926 ...15	
171-827 ...15	172-801 ...27	173041 ...5	
171-828 ...15	172-802 ...27	174-501 ...27	
171-829 ...15	172-803 ...27	174-502 ...27	
171-830 ...15	172-804 ...27	174-503 ...27	
171-831 ...15	172-820 ...30	174-504 ...27	
171-832 ...15	172-822 ...5	174-505 ...27	
171-833 ...15	172-823 ...5	174-506 ...27	
171-877 ...32	172-845 ...29	174-507 ...27	
171-883 ...19	172-847 ...29	174-514 ...30	
171-899 ...32	172-883 ...30	174-558 ...11, 13, 23	
171-911 ...30	172-884 ...7	174-645 ...30	
171-913 ...30	172-924 ...29	174-648 ...30	
171-914 ...30	172-987 ...29		
171-915 ...30	172-989 ...29		
171-919 ...7, 11, 13	173-021 ...19		