

KNIGHT

TRAILER TYPE MIXER

PARTS MANUAL

FOR

MODELS 3050/3060/3070

(S/N 162 & below)

(S/N 168 & below)
(excluding S/N 134)

(S/N 117 & below)

TABLE OF CONTENTS

Abbreviations	2
Using This Listing	3
Front End and Driveshaft Parts	4
Chains and Tighteners	5
Rear Drive Parts	6-7
Drive Shield, Bucket Guard, Grease Line, Lights	8-9
Reel and Auger Parts (3050 only)	10-11
Reel and Auger Parts (3060 only)	12-13
Reel and Auger Parts (3070 only)	14-15
Undercarriage Parts	16-17
Door Parts	18
Slide Tray Parts	19
Power Chute Parts	20-21
HAY MAXX Parts	22-23
Repair Liner Parts	24
Scale Connector Repair Parts	25
Scale Parts	26-27
PTO Driveline Parts (540 and 1000 RPM)	28-32
Driveline Cross Repair	33
Flighting Terms & Dimensions	34
Decal & Paint List	35
Optional Kits	35
Hardware Listing	36-37
Part Number Index	38-39

Catalog Part Number 005801

Unit Serial Number _____

Operator Instruction Manual for this unit: 005798

ABBREVIATIONS

Assy	Assembly
A/R	As Required
B	Bolt
Brg	bearing
BSN	Before Serial Number
Btm	Bottom
C-Bolt	Carriage Bolt
Cttr	Cotter
CV	Constant Velocity
Dia	Diameter
ea	Each
eq or Equiv	Equivalent
Fln	Flanged Lock Nut
Fw	Flat Washer
Ga	Gauge
Gr or Grd	Grade
Hd	Head
Hyd	Hydraulic
ID	Inside Diameter
Ill or Illus	Illustration
Ind	Indicator
Kw	Keyway
LH	left Hand
Ln	Lock Nut
Lw	Lock Washer
Mtg Hrd	Mounting Hardware
NC	National Coarse
NF	National Fine
OAL	Over all length
OD	Outside Diameter
Pc(s)	Piece(s)
PD	Pitch Diameter
PHB	Panhead Bolt
PTO	Power Takeoff (shaft)
Q or Qty	Quantity
Reg Mach	Regular Machine
RH	Right Hand
SN	Serial Number
Spk, or Spkt or Sprkt	Sprocket
Sq	Square
Std	Standard
UASN	Used After Serial Number
UBSN	Used Before Serial Number

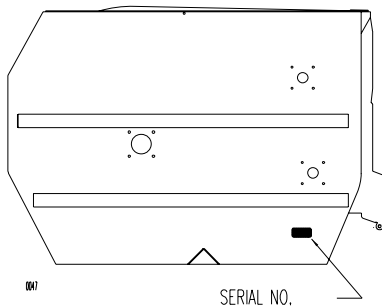
USING THIS SERVICE PARTS LISTING

This listing uses a number indentation system to specify the parts of an assembly. Any number which is indented to the right, indicates that it is a component of the item to the upper left. Example:

<u>Part no</u>	<u>Description</u>	<u>Qty</u>
uuu-uuu	Assembly A	2
www-ww	Sub-Assembly B	3
(Component of A)		
www-www	Component of B	5
xxx-xxx	Another Component of B	1
yyy-yyy	Sub-Assembly C	1
(Component of A)		
etc.		

Using this system, the sub-assemblies and their components are included if an **Assembly** is ordered. Similarly, the components of a sub-assemblies are included if a sub-assembly is ordered.

The quantity (Qty) associated with an assembly, represents the number of times an assembly could be shown in the drawing. The sub-assembly quantity however, is the number of times a sub-assembly is used to build one assembly. Similarly, the component quantity refers to the number of times a given component is found in one sub-assembly.



Serial Number Location
3050, 3060 and 3070
Fig. A

MODEL AND SERIAL NUMBER INFORMATION is located below the drive shielding (Fig. A). The model number, serial number and part number should be known when asking service personnel for parts.

If you cannot find the part you need, be as descriptive as possible when placing an order:

Sprockets: give the bore size, number of teeth, and quantity and size of keyways.

Roller chain: give the size of chain (stamped on the side of each link) and number of links.

Shafting: give the diameter, length, and quantity and size of keyways.

Hardware is generally not included with parts. If you need any hardware, check the size, the length, and the grade (Fig. B), then check the hardware list in this manual for the part numbers.

All hex head bolts up to and including 7/16" diameter are grade 5, and nuts are grade B unless otherwise stated.

The hardware listing also includes listings for zerks, cotter pins, set screws, and roller chain links.

The illustrations in this manual are meant to be used only as a guide for identifying parts and locating their relative positions.

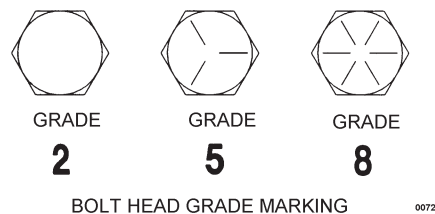
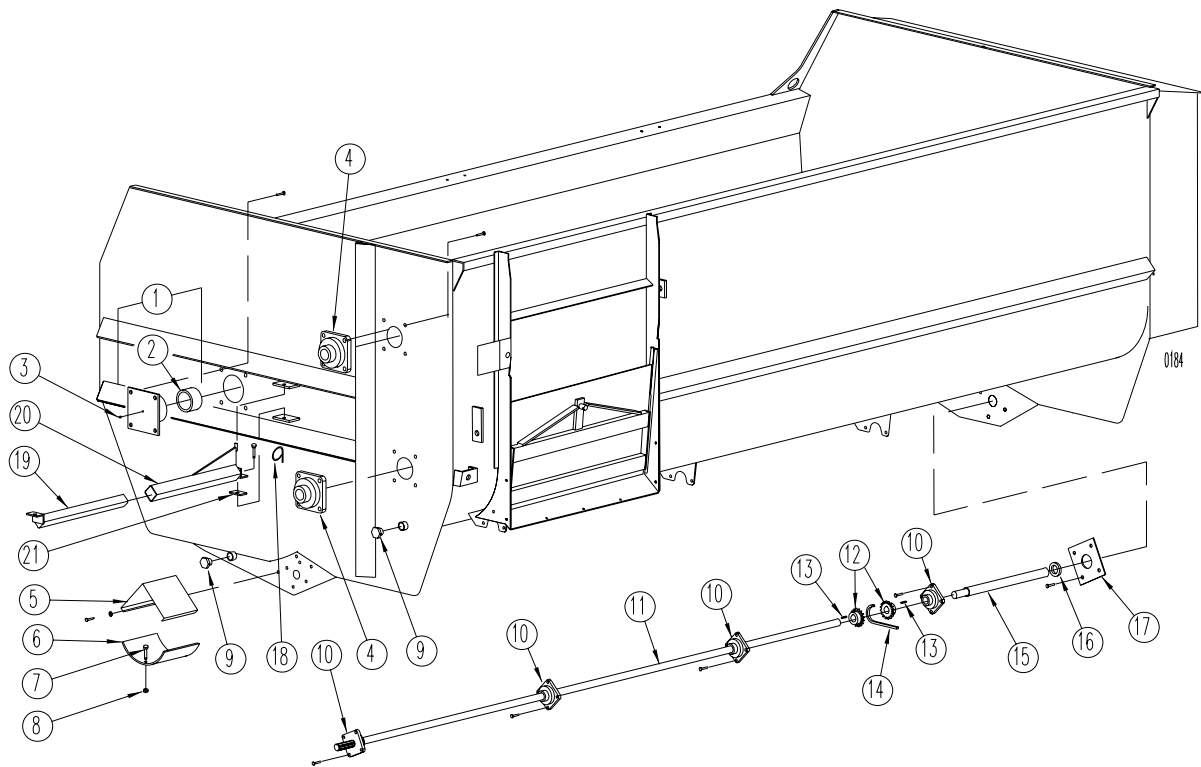


Fig. B

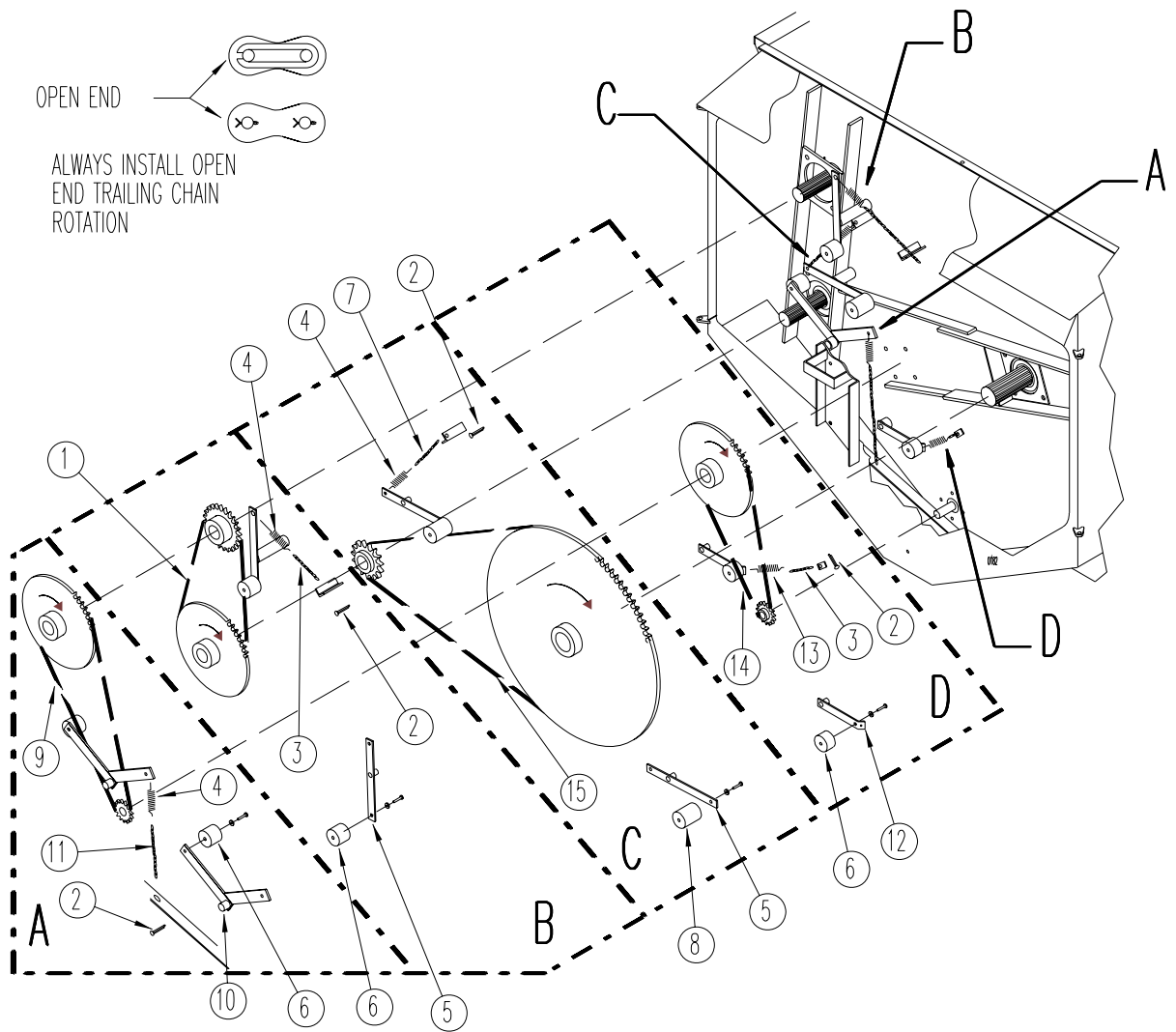
FRONT END AND DRIVESHAFT PARTS

REF	PART NO	QTY	DESCRIPTION
1	102-322	1	Reel Bearing Assy 3 1/2"; Mtg Hrd: 3/4" 2" Bolt, Lw, Nut (4 ea)
2	135-949	1	Bearing Sleeve
3	170-865	1	Zerk; 1/8" NPT
4	170-053	2	Bearing; 2 1/2" Roller; Mtg Hrd: 5/8" x 2" Bolt, Fw, Lw, Nut (4 ea)
5	136-076	1	Shield; PTO Cover; Mtg Hrd: 3/8" X 1" Bolt, Fw, Lw, N (3 ea) (inc. decals: 170-490 & 173-041)
6	133-920	1	PTO Driveline Shield (1/8" x 9" x 16") Mtg Hrd: 5/16" x 3/4" Bolt & FLN (4 ea)
7			See PTO Driveline section for the shear bolt on your machine.
8			See PTO Driveline section for the shear bolt on your machine.
	170-028	3	Flange Lock Nut; 5/16" (grade 5) (3050 with 540 RPM and 3070 only)
9	171-919	2	Pipe Plug; 1 1/4" PVC
10	172-288	4	Bearing; 1 1/2" Eccentric Lock (5 req'd for 3070) Mtg Hrd: 1/2" x 1-3/4" Bolt, Lw, Nut (4ea on Frt Brg, 3ea on Rear Brg.)
11	140-012	1	Input Shaft; 1 1/2" x 120 13/16" (3050 only)
	140-011	1	Input Shaft; 1 1/2" x 150 13/16" (3060 only)
	140-535	1	Input Shaft; 1 1/2" x 180 13/16" (3070 only)
12	134-602	2	Sprocket, 60B-18, 1 1/2" Bore
13	173-065	2	Key; SQ 3/8" x 1 1/2"
14	173-284	1	Chain, Roller 60-2-18 Pitch W/Connector link
15	140-009	1	Input Shaft; 2" x 55.25"
16	172-998	1	Lip Seal; 2" I.D. C/R19760
17	135-936	1	Seal Retain Plate
18	134-900	1	Hose Hanger (weld on)
19	102-439	1	Swing Arm Assembly, Inner
20	102-437	1	Swing Arm Assembly, Outer; Mtg Hrd: 1/2" x 1 1/2" Bolt, Ln (includes "T" Bolt)
21	136-454	1	Belt, Rubber 1/4" x 3 1/2" x 2"

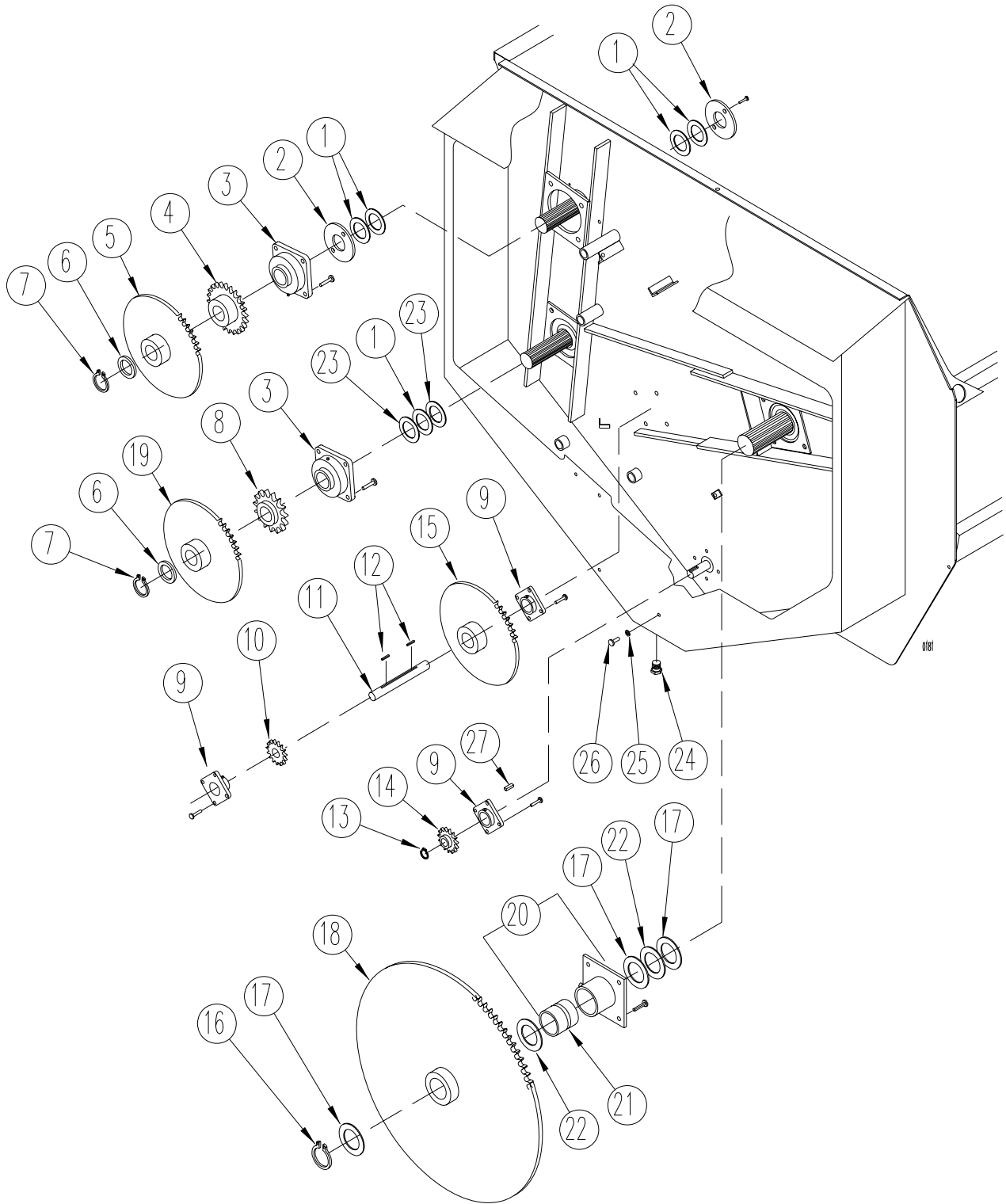


CHAINS AND TIGHTENERS

REF	PART NO	QTY	DESCRIPTION
1	173-014	1	Roller Chain; 120-1-71Pitch, W/Connector Link and Half Link
2	170-800	4	Clinch Pin, 3/16" x 1 1/2"
3	170-845	2	Machine Chain; #4 x 17 links
4	172-751	3	Spring, Extension 8 1/4" LG x 1 1/2" OD
5	102-331	2	Chain Tightener Arm
6	134-155	3	Tightener Block 3" OD x 2 1/2"; Mtg Hrd: 1/2" x 3" Bolt, Fw, Lw, Nut
7	171-045	1	Machine Chain; #4 x 22 links
8	134-086	1	Tightener Block 3" OD x 3"; Mtg Hrd: 1/2" x 4" Bolt, Fw, Lw, Nut
9	173-013	1	Roller Chain; 100-1-90 Pitch, W/Connector Link
10	102-330	1	Chain Tightener Arm
11	170-518	1	Machine Chain; #4 x 30 links
12	101-819	1	Chain Tightener Arm
13	172-005	1	Spring, Extension 6" LG x 1" OD
14	173-012	1	Roller Chain; 80-1-96 Pitch, W/Connector Link (1000 RPM)
	172-864	1	Roller Chain; 80-1-82 Pitch, W/Connector Link (540 RPM)
15	173-015	1	Roller Chain; 140-1-108 Pitch, W/Connector Link



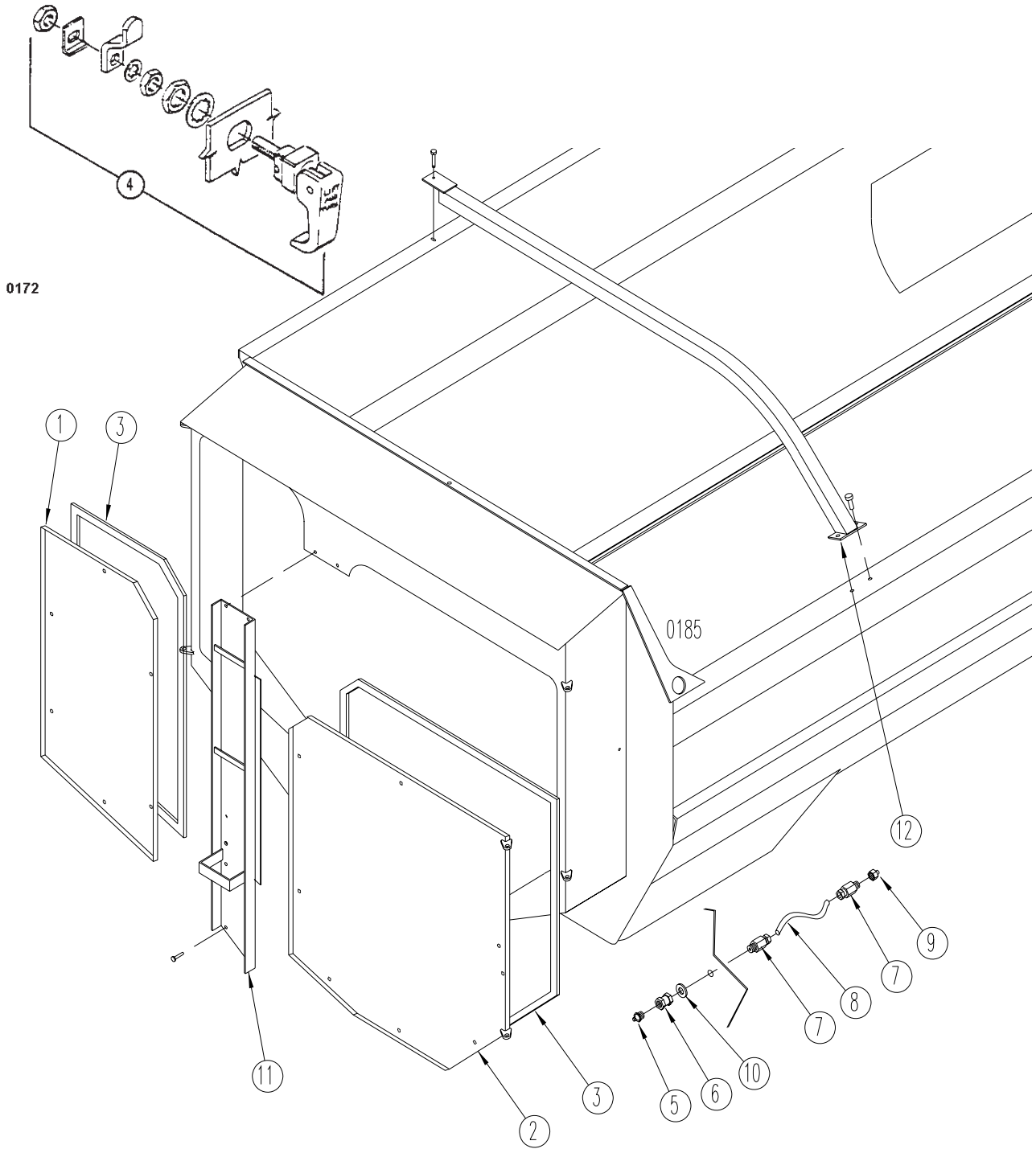
REAR DRIVE PARTS



REAR DRIVE PARTS

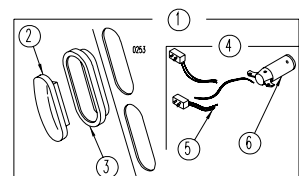
REF	PART NO	QTY	DESCRIPTION
1	135-697	5	Seal Washer, Plastic; 4" ID x 5-1/4" OD
2	135-985	2	Seal Housing; 6" Dia, Mtg Hrd: 5/16" x 1-1/2" Bolt, Lw, Nut (2 ea)
3	170-445	2	Bearing; 3 1/2"; Mtg Hrd: 3/4" x 3" Bolt, Lw, Nut (4 ea) (FB22456E)
4	136-003	1	Sprocket; 120-B-24, 3 1/2" splined bore
5	136-002	1	Sprocket; 100-B-52, 3 1/2" splined bore
6	136-067	1	Thrust Shim; 4 3/4" Dia x 10 Ga. (as req'd)
	136-068	3	Thrust Shim; 4 1/4" Dia x 16 Ga. (as req'd)
7	171-607	2	Snap Ring, External; 3 1/2"
8	136-005	1	Sprocket; 140-B-12, 3 1/2" splined bore
9	170-008	3	Bearing; 2"; Mtg Hrd: Outer counter shaft 5/8" x 2 1/4" B, Fw, Lw, N (4 ea) Inner counter shaft 5/8" x 2" B, Lw, N (4ea) Input bearing 5/8" x 2 1/4" B, Lw, N (4ea)
10	136-001	1	Sprocket; 100-B-15, 2" bore
11	136-011	1	Counter Shaft; 2" Dia. x 13 1/2"
12	171-695	2	Key, SQ 1/2" x 4 1/2"
13	170-142	1	Snap Ring, External; 2"
14	136-000	1	Sprocket; 80-B-18, 2" bore (1000 RPM)
	135-996	1	Sprocket; 80-B-20, 2" bore (540 RPM)
15	134-471	1	Sprocket; 80-B-63, 2" bore (1000 RPM)
	135-997	1	Sprocket; 80-B-38, 2" bore (540 RPM)
16	172-289	1	Snap Ring, External; 5"
17	135-994	3	Thrust Shim; 6 1/4" Dia x 10 Ga.
18	134-447	1	Sprocket; 140-B-82; 5" splined bore
19	136-004	1	Sprocket; 120-B-45; 3 1/2" splined bore
20	102-323	1	Bearing Assembly; Mtg Hrd: 3/4" x 2-1/4" Bolt, Lw, Nut (4 ea)
21	135-946	1	Bearing Sleeve; 5" ID
22	135-992	2	Seal, Plastic, 5" ID x 6 1/4" OD x 1/8" THK
23	135-993	2	Seal, Plastic, 4" ID x 5 1/4" OD x 1/4" THK
24	171-919	1	Drain Plug, 1-1/4" PVC
25	172-884	1	Washer, 1/2" Nylon
26	170-149	1	Oil Plug; 1/2" x 1" bolt
27	171-643	1	Key, SQ 1/2" x 1 1/4"

DRIVE SHIELD, BUCKET GUARD AND GREASE LINE PARTS



LIGHT KIT PARTS

1	174-675	1	Light Kit
2	174-673	2	Light, Amber
2	174-674	2	Light, Red
3	174-725	4	Grommet
4	174-775	1	Wire Harness
5	174-724	4	Light Connector (pigtail only)
6	172-110	1	7 Pin Connector (SAE J560B)



DRIVE SHIELD, BUCKET GUARD AND GREASE LINE PARTS

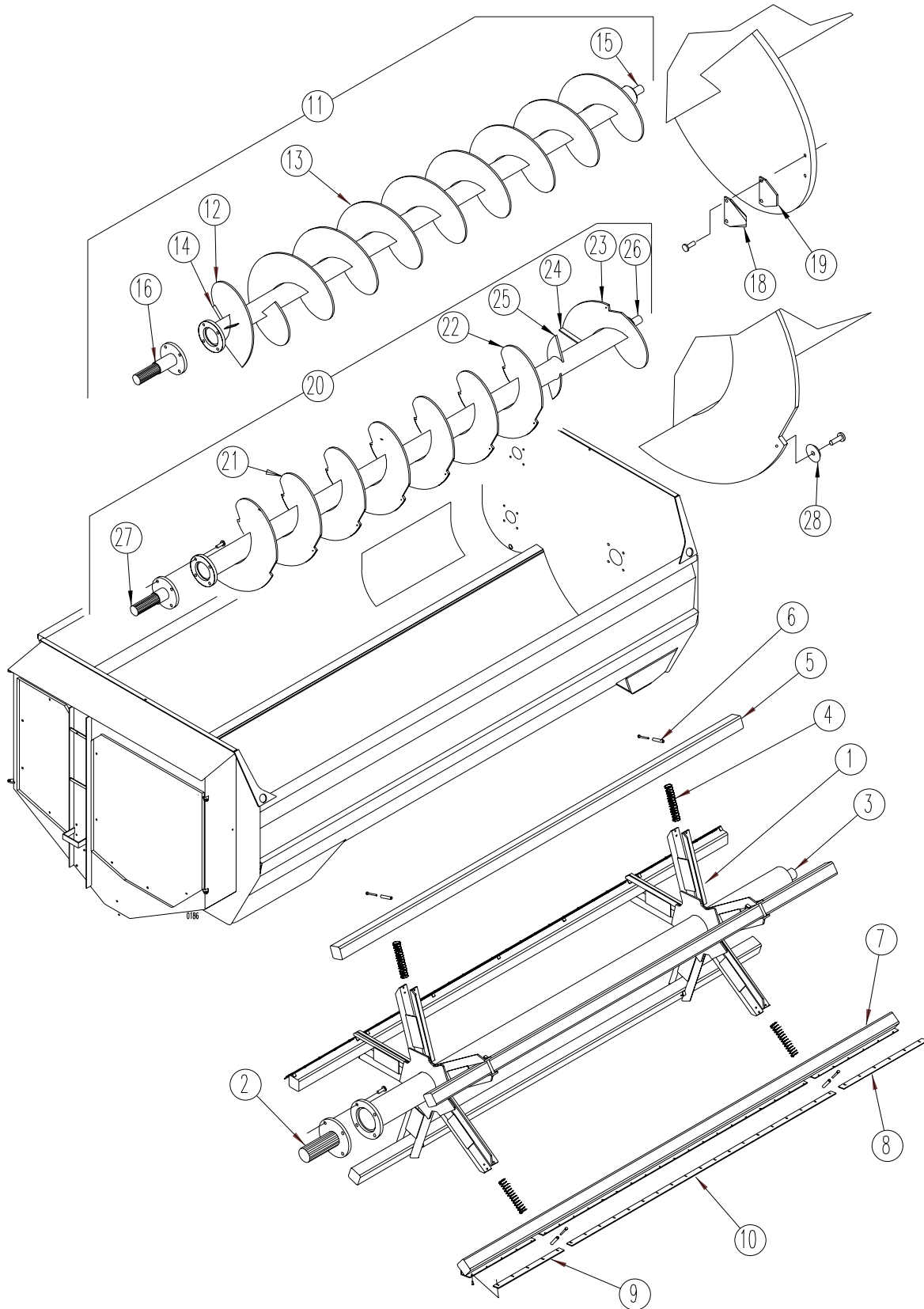
REF	PART NO	QTY	DESCRIPTION
1	102-309	1	Left Safety Shield; Rear Drive; Mtg Hrd: 1/2" x 1 1/2" Bolt Ln (2 ea)
2	102-310	1	Right Safety Shield; Rear Drive; Mtg Hrd: 1/2" x 1 1/2" Bolt Ln (2 ea)
3	171-935**		Shield Gasket; 3/8" x 3/4" Closed Cell Foam
		12'	Required for Left Shield
		16'	Required for Right Shield
4	173-027	13	Lift and Turn Latch
5	170-865	1*	Grease Zerk 1/8" NPT
6	172-024	1*	Coupling
7	172-822	2*	Compression Fitting
8	180-630**	*	Grease Line Tubing
		26"	Required for upper auger bearing
		18"	Required for lower auger bearing
		26"	Required for rear reel bearing
		26"	Required for input shaft bearing
		18"	Required for inner countershaft bearing
		20"	Required for outer countershaft bearing
9	172-823***	1*	Adapter Fitting; 1/4" SAE x 1/8" NPTF
10	170-244	1*	Flat Washer 3/8"
11	102-308	1	Sheet, Center Panel; Mtg Hrd: 1/2" x 1 1/4" bolt, Fw, Lw, N (4 ea)
12	103-521	3	Bucket Guard; Mtg Hrd: Left side 3/8" x 1 1/4" bolt, Fw, Lw, N (1 ea) Right side 3/8" x 1" bolt, Lw, N (2 ea) (4 req'd for 3070)

* Quantity required to complete 1 grease line assy

** Sold by the linear foot.

*** Not required on all installations.

REEL & AUGER PARTS - 3050 ONLY

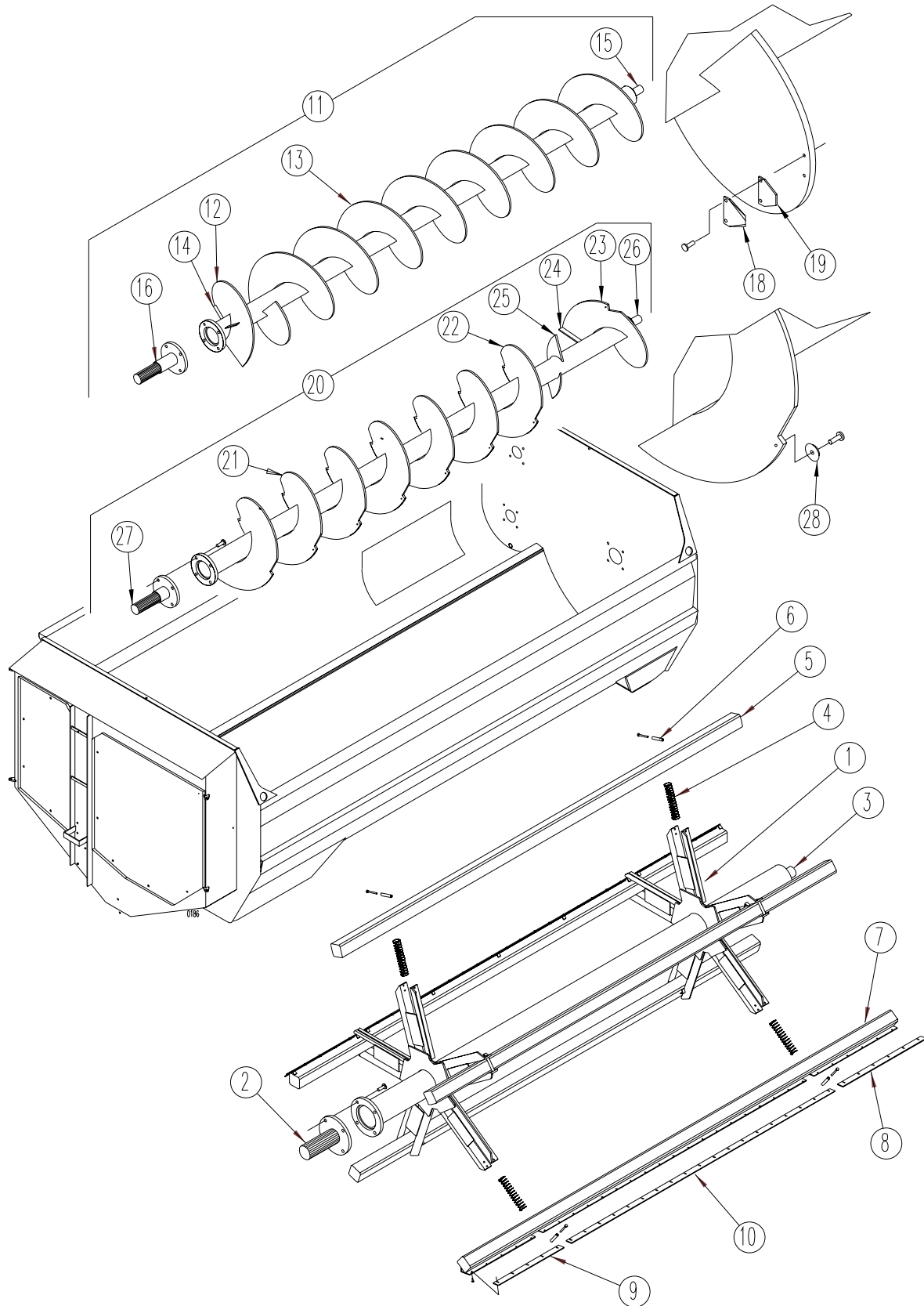


REEL & AUGER PARTS - 3050 ONLY

REF	PART NO	QTY	DESCRIPTION
1	102-336	1	Reel Weldment
2	102-317	1	Rear Plug Assembly; 5" splined; Mtg Hrd: 1" x 3 1/2" bolt, LW, Nut (4 ea)
3	102-318	1	Front Plug Assembly 3 1/2" (weld on)
4	171-920	10	Spring; Reel Cross Pipe Compression, 16" LG x 2 3/8" OD
5	102-340	3	Cross Tube; Mtg Hrd: 1/2" x 6 1/2" Bolt, Lw, Nut (2 ea)
6	135-968	10	Retaining Sleeve
7	102-339	2	Cross Tube Wiper Assembly; Mtg Hrd: 1/2" x 6 1/2" Bolt, Lw, Nut
8	135-959	2	Plastic Wiper Blade 2 1/2" x 29 3/4"; Mtg Hrd: 1/4" x 1" Bolt, HD Fw, Lw, Nut (5 ea)
9	135-958	2	Plastic Wiper Blade 2 1/2" x 37 3/4"; Mtg Hrd: 1/4" x 1" Bolt, HD Fw, Lw, Nut (6 ea)
10	136-065	2	Plastic Wiper Blade 2 1/2" x 89 1/2"; Mtg Hrd: 1/4" x 1" Bolt, HD Fw, Lw, Nut (14 ea)
11	103-741	1	Upper Auger Assembly
12	140-805	1	Flighting, LH; 22"P x 22" OD x 6 5/8" ID x 1/2" THK x 12" LG
13	140-804	6	Flighting, RH; 22"P x 22" OD x 6 5/8" ID x 1/2" THK x 22" LG
14	135-971	4	Flighting Brace, 1/2" x 2" x 7"
15	102-312	1	Front Plug Assembly, 2 1/2" (weld on)
16	102-315	1	Rear Plug Assembly, 3 1/2" Splined; Mtg Hrd: 7/8" x 3 1/2" bolt, LW, Nut (4 ea)
	135-984 ^A	1	Spacer Tube, 4 1/8" X 3/8" X 5 1/8" LG
18	174-558	50	Knife, Sickle Section (Qty May Vary) Mtg Hrd: 5/16" x 1 1/4" Bolt, LW & Nut (2 ea)
19	136-921	50	Backer Plate
20	103-740	1	Lower Auger Assembly
21	140-777	4	Flighting, LH; 24"P x 24"OD x 6 5/8" ID x 5/8" THK x 24" LG
22	140-779	1	Flighting, LH; 24"P x 24"OD x 6 5/8" ID x 3/4" THK x 24" LG
23	140-782	1	Flighting, RH; 24"P x 24"OD x 6 5/8" ID x 3/4" THK x 24" LG
24	135-972	8	Flighting Brace, 1/2" x 2 1/2" x 8"
25	135-976	2	Auger Paddle
26	102-312	1	Front Plug Assembly, 2 1/2" (weld on)
27	102-313	1	Rear Plug Assembly, 3 1/2" Splined; Mtg Hrd: 7/8" x 3 1/2" bolt, LW, Nut (4 ea)
	135-983 ^A	1	Spacer Tube, 4 1/8" x 3/8" x 2 1/8" Lg
28	134-352	20	Lower Auger Knife; (Quantity May Vary) Mtg Hrd: 3/8" x 1 1/4" Bolt, LW & Nut (1 ea)

^A Spacer tubes are not required after June of 2000

REEL & AUGER PARTS - 3060 ONLY

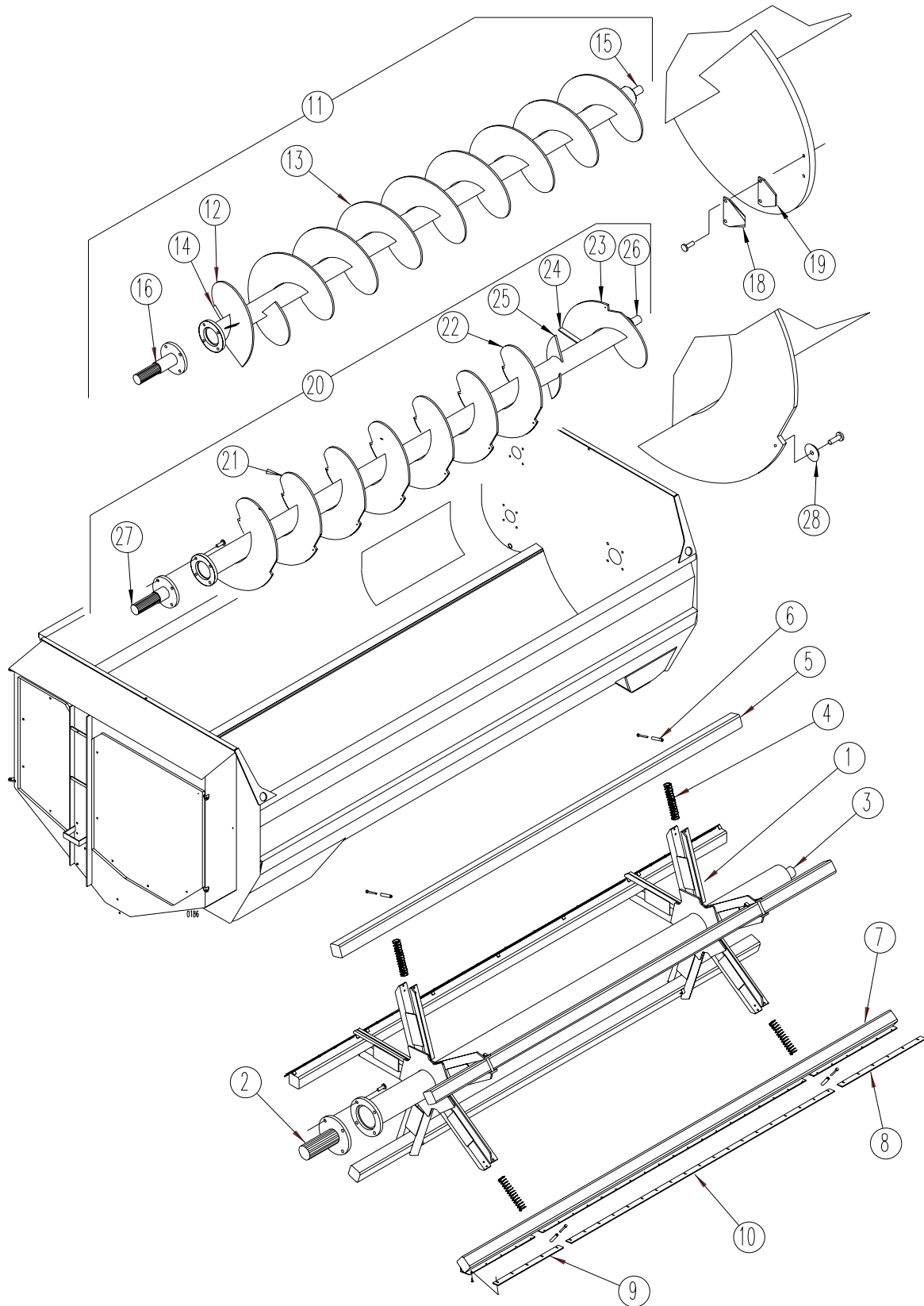


REEL & AUGER PARTS - 3060 ONLY

REF	PART NO	QTY	DESCRIPTION
1	102-320	1	Reel Weldment
2	102-317	1	Rear Plug Assembly; 5" splined; Mtg Hrd: 1" x 3 1/2" bolt, Lw, Nut (4 ea)
3	102-318	1	Front Plug Assembly 3 1/2" (weld on)
4	171-920	10	Spring; Reel Cross Pipe Compression, 16" LG x 2 3/8" OD
5	102-319	3	Cross Tube; Mtg Hrd: 1/2" x 6 1/2" Bolt, Lw, Nut (2 ea)
6	135-968	10	Retaining Sleeve
7	102-321	2	Cross Tube Wiper Assembly; Mtg Hrd: 1/2" x 6 1/2" Bolt, Lw, Nut
8	135-959	2	Plastic Wiper Blade 2 1/2" x 29 3/4"; Mtg Hrd: 1/4" x 1" Bolt, HD Fw, Lw, Nut (5 ea)
9	135-958	2	Plastic Wiper Blade 2 1/2" x 37 3/4"; Mtg Hrd: 1/4" x 1" Bolt, HD Fw, Lw, Nut (6 ea)
10	135-960	2	Plastic Wiper Blade 2 1/2" x 119 1/2"; Mtg Hrd: 1/4" x 1" Bolt, HD Fw, Lw, Nut (19 ea)
11	103-725	1	Upper Auger Assembly
12	140-805	1	Flighting, LH; 22"P x 22" OD x 6 5/8" ID x 1/2" THK x 12" LG
13	140-804	7	Flighting, RH; 22"P x 22" OD x 6 5/8" ID x 1/2" THK x 22" LG
14	135-971	4	Flighting Brace, 1/2" x 2" x 7"
15	102-312	1	Front Plug Assembly, 2 1/2" (weld on)
16	102-315	1	Rear Plug Assembly, 3 1/2" Splined; Mtg Hrd: 7/8" x 3 1/2" bolt, Lw, Nut (4 ea)
	135-984 ^A	1	Spacer Tube, 4 1/8" x 3/8" x 5 1/8" Lg.
18	174-558	58	Knife, Sickle Section (Qty May Vary) Mtg Hrd: 5/16" x 1 1/4" Bolt, Lw & Nut (2 ea)
19	136-921	58	Backer Plate
20	103-720	1	Lower Auger Assembly
21	140-777	5	Flighting, LH; 24"P x 24"OD x 6 5/8" ID x 5/8" THK x 24" LG
	140-779	1	Flighting, LH; 24"P x 24"OD x 6 5/8" ID x 3/4" THK x 24" LG
22	140-782	1	Flighting, RH; 24"P x 24"OD x 6 5/8" ID x 3/4" THK x 24" LG
23	135-972	8	Flighting Brace, 1/2" x 2 1/2" x 8"
24	135-976	2	Auger Paddle
25	102-312	1	Front Plug Assembly, 2 1/2" (weld on)
26	102-313	1	Rear Plug Assembly, 3 1/2" Splined; Mtg Hrd: 7/8" x 3 1/2" bolt, Lw, Nut (4 ea)
	135-983 ^A	1	Spacer Tube 4 1/8" x 3/8" x 2 1/8" Lg
28	134-352	25	Lower Auger Knife; (Quantity May Vary) Mtg Hrd: 3/8" x 1 1/4" Bolt, Lw & Nut (1 ea)

^A Spacer tubes are not required after June of 2000.

REEL & AUGER PARTS - 3070 ONLY



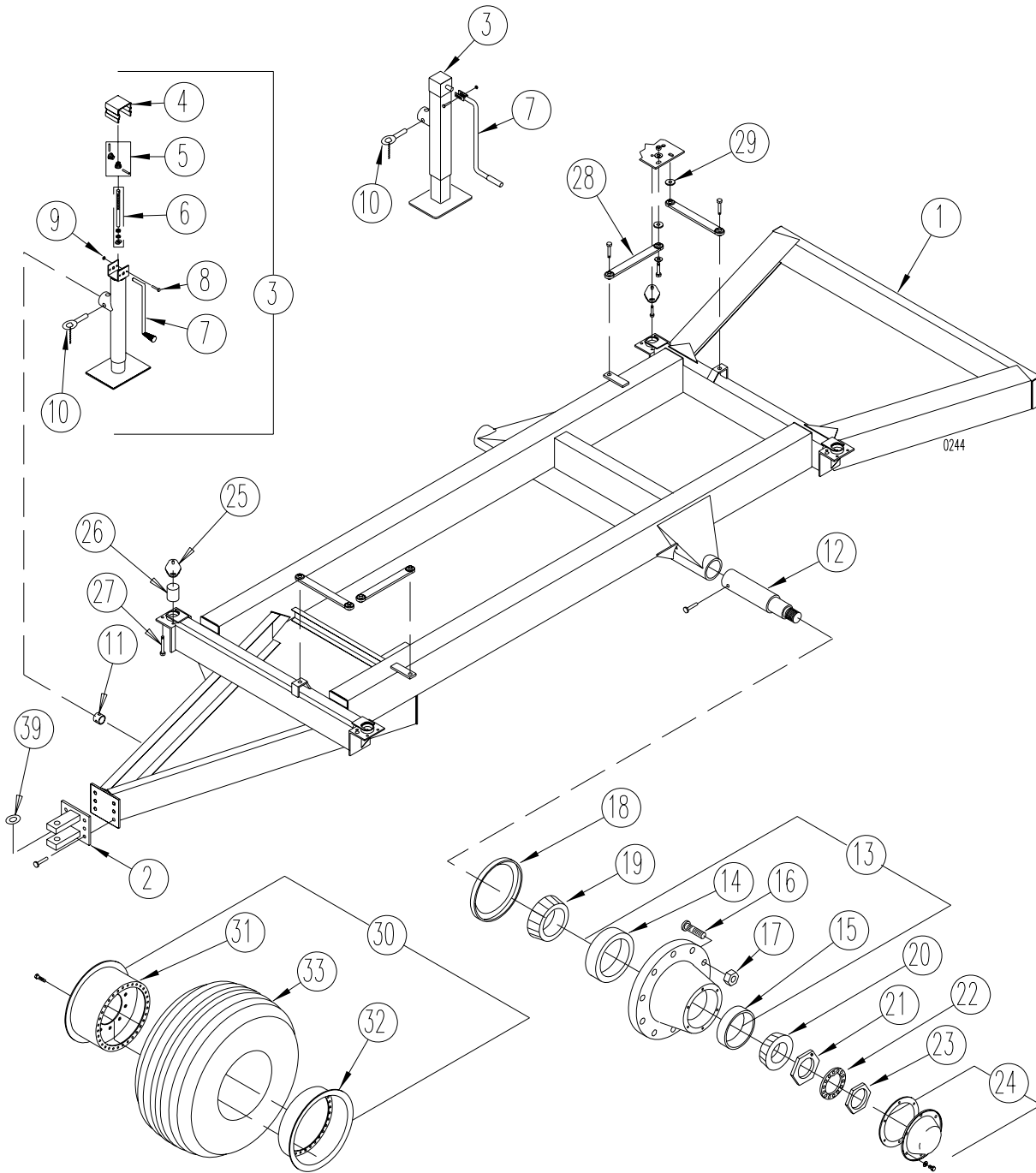
REEL & AUGER PARTS - 3070 ONLY

REF	PART NO	QTY	DESCRIPTION
1	103-753**	1	Reel Weldment
2	103-538	1	Rear Plug Assembly; 5" splined; Mtg Hrd: 1" x 3 1/2" bolt, LW, Nut (5 ea)
3	103-537	1	Front Plug Assembly 3 1/2" (weld on)
4	174-672	10	Spring; Reel Cross Pipe Compression, 16" LG x 2.6" OD, 24 coil, .38 wire
5	103-535	3	Cross Tube; Mtg Hrd: 1/2" x 6 1/2" Bolt, Lw, Nut (2 ea)
6	135-968	10	Retaining Sleeve
7	103-536	2	Cross Tube Wiper Assembly; Mtg Hrd: 1/2" x 6 1/2" Bolt, Lw, Nut
8	140-534	2	Plastic Wiper Blade 2 1/2" x 35.0"; Mtg Hrd: 1/4" x 1" Bolt, HD Fw, Lw, Nut (6 ea)
9	140-534	2	Plastic Wiper Blade 2 1/2" x 35.0"; Mtg Hrd: 1/4" x 1" Bolt, HD Fw, Lw, Nut (6 ea)
10	140-533	4	Plastic Wiper Blade 2 1/2" x 73.5"; Mtg Hrd: 1/4" x 1" Bolt, HD Fw, Lw, Nut (12 ea)
11	103-743	1	Upper Auger Assembly
12	140-858	1	Flighting, LH; 24"P x 24" OD x 8.65" ID x 1/2" THK
13	140-857	10	Flighting, RH; 20"P x 24" OD x 8.65" ID x 1/2" THK
14	135-971	4	Flighting Brace, 1/2" x 2" x 7"
15	103-542	1	Front Plug Assembly, 2 1/2" (weld on)
16	103-540	1	Rear Plug Assembly, 3 1/2" Splined; Mtg Hrd: 1.0" x 3 1/2" bolt, LW, Nut (4 ea)
	135-984 ^A	1	Spacer Tube 4 1/8" x 3/8" x 5 1/8" Lg
18	174-558	88	Knife, Sickle Section (Qty May Vary) Mtg Hrd: 5/16" x 1-1/4" Bolt, LW & Nut (2 ea)
19	136-921	88	Backer Plate
20	103-742	1	Lower Auger Assembly
21	140-855	7	Flighting, LH; 24"P x 24"OD x 8.65" ID x 5/8" THK
	140-854	1	Flighting, LH; 24"P x 24"OD x 8.65" ID x 3/4" THK
22	140-853	1	Flighting, RH; 24"P x 24"OD x 8.65" ID x 3/4" THK
23	140-538	8	Flighting Brace, 1/2" x 2 1/2" x 7"
24	140-522	2	Auger Paddle
25	103-542	1	Front Plug Assembly, 2 1/2" (weld on)
26	103-539	1	Rear Plug Assembly, 3 1/2" Splined; Mtg Hrd: 7/8" x 3 1/2" bolt, LW, Nut (4 ea)
	135-983 ^A	1	Spacer Tube 4 1/8" x 3/8" x 2 1/8" Lg.
28	134-352	29	Lower Auger Knife; (Quantity May Vary) Mtg Hrd: 3/8" x 1 1/4" Bolt, LW & Nut (1 ea)

** Reel Weldment was 103-534. Four arm reel is no longer available. All components remain the same. Additional cross tube was added.

^A for serial numbers 081 and below

UNDERCARRIAGE PARTS

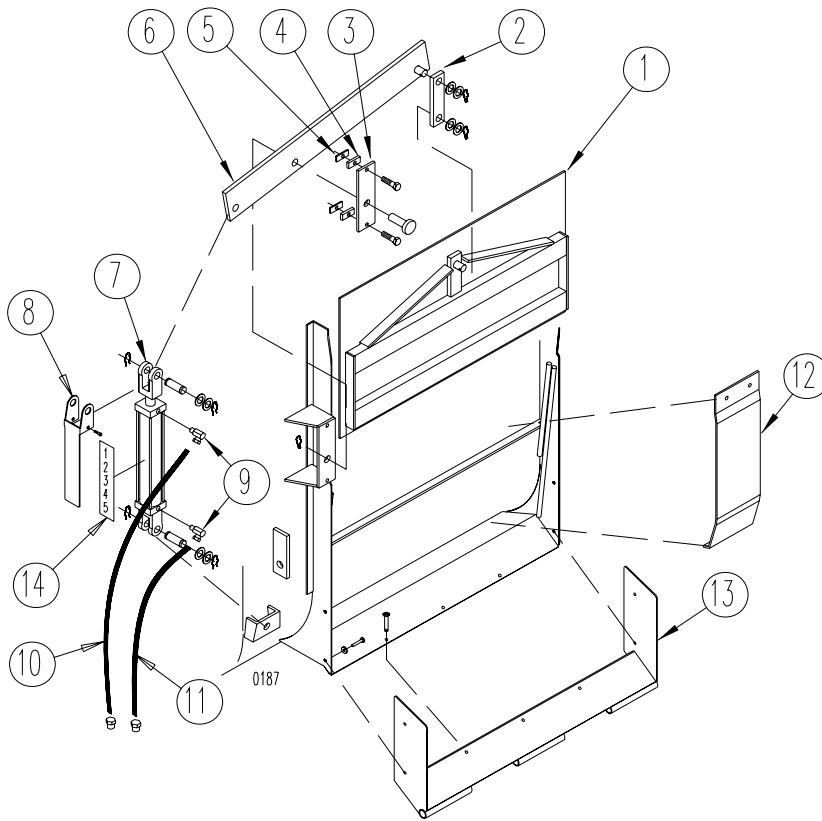


UNDERCARRIAGE PARTS

REF	PART NO	QTY	DESCRIPTION
1	102-333	1	Undercarriage Weldment (3050 only)
	102-306	1	Undercarriage Weldment (3060 only)
	103-531	1	Undercarriage Weldment (3070 only)
2	102-307	1	Clevis Hitch Assembly; Mtg Hrd: 3/4" x 2" Bolt (<i>grade 8</i>), LN (<i>grade 8</i>)
3	174-676	1	Jack, 10,000 lb (3070 only, includes crank assy, mount tube & pull pin)
3	171-610	1	Jack, sidewind 7000 lb (3050 & 3060)
4	171-814	1	Cover
5	171-614	1	Gear Kit (2 bevel gears, 2 pins)
6	171-611	1	Screw, nut, bearing & washer assy
7	171-612	1	Crank Assembly (3050 & 3060)
	174-840	1	Crank Assembly (3070 only)
8	170-509	2	Carriage bolt; 1/4" x 3"
9	170-125	2	Nut, 1/4"
10	171-613	1	Pull Pin (3050 & 3060)
	174-838	1	Pull Pin (3070 only)
11	171-615	1	Mount Tube (3050 & 3060)
	174-839	1	Mount Tube (3070 only)
12	135-918	2	Axle Spindle; 4 1/2" x 22 1/4" Mtg Hrd: 5/8" x 7" B, Ln
13	172-999	2	Wheel Hub Assy.; 10 bolt (<i>includes 170-023 zerk</i>)
14	173-031	1	Bearing Race; HM218210
15	173-032	1	Bearing Race; HM212011
16	173-033	10	Wheel Stud; 3/4" NF
17	170-920	10	Lug Nut; 3/4" NF
18	173-006	2	Grease seal; Transcom # 44605SA
19	173-001	2	Bearing Cone; HM218248
20	173-002	2	Bearing Cone; HM212049
21	173-003	2	Spindle Nut
22	173-004	2	Lock Washer
23	173-005	2	Spindle Nut
24	173-007	2	Hub Cap; (<i>includes gasket</i>) Mtg Hrd: 5/16" x 3/4" Bolt (6 ea)
25	102-325	4	Load Cell Mount; Mtg Hrd: 1/2" x 1 1/2" Bolt, Lw, Nut (2 ea) Fw (4ea)
26	135-961	4	Dummy Load Cell (For Units Without Scales)
27	173-019	4	Retaining Bolt; 5/8" x 7 1/2" B, Fw (2ea) Ln (1ea)
28	102-326	4	Check Arm; Mtg Hrd: running gear: Bolt; 3/4" x 3 1/2" B, Ln (<i>grade 8</i>), Mixer: 3/4" x 3 1/2" B, Ln, Fw (2 ea)
29	135-917	4	Plate; Spacer Disk
30	173-008	2	Wheel and Tire Assy. (<i>aircraft</i>)
31	173-170	1	Wheel Rim (<i>inner</i>); Mtg Hrd: 1/2" x 1 1/4" Bolt (<i>grade 5</i>), LN (32 ea)
32	173-171	1	Wheel Rim (<i>outer</i>)
33	173-172	1	Tire 44.5" x 16.5"
34	173-173	1	Inner Tube 44.5" x 16.5" <i>not shown</i>
35	173-174	1	Flap, 44.5" x 16.5" <i>not shown</i>
36	172-312	2	Wheel Rim; 10 bolt (optional, 3050 only) <i>not shown</i>
37	172-313	2	Tire; 18" x 22.5" (optional, 3050 only) <i>not shown</i>
38	174-577	2	Inner Tube 18" x 22.5" (optional, 3050 only) <i>not shown</i>
39	140-848	1	Clevis Thrust Washer (Nylon)

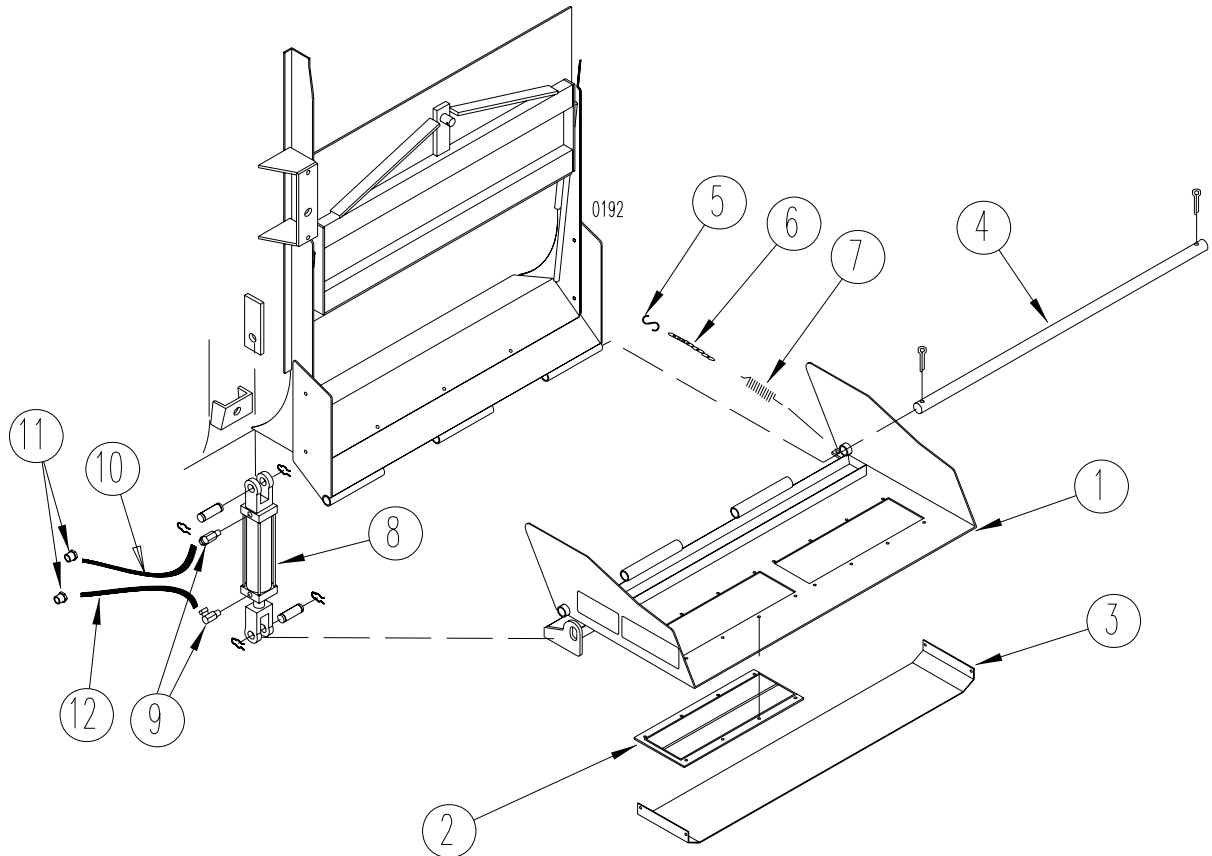
DOOR PARTS

REF	PART NO	QTY	DESCRIPTION
1	102-295	1	Door Assembly
2	136-254	1	Door Linkage; Mtg Hrd: 170-074 Hairpin (Qty 1) 170-122 Fw (Qty 4)
3	140-017	1	Cylinder Pivot Plate; Mtg Hrd: 5/8" x 2 1/4" Bolt, Ln (2 ea)
4	136-963	2	Door Linkage Spacer, 3/8" Thk
5	136-965	2	Door Linkage Spacer, 5/16" Thk
6	102-525	1	Door Linkage Arm Assy.; Mtg Hrd:170-073 Pin (Qty 1), 170-074 Hairpin (Qty 1)
7	173-273	1	Hydraulic Cylinder; 2" Dia. x 10" (<i>seal kit 170-075</i>); 173-274 Pin, 172-275 Hairpin
8	140-813	1	Door Gauge; Mtg Hrd: 3/8" x 7/8" bolt, LN (1 ea)
9	171-030	2	Swivel Adapter; 3/8" x 3/8" x 90°
10	170-471	1	Hydraulic Hose; 1/4" x 170"
11	170-468	1	Hydraulic Hose; 1/4" x 162"
12	170-235	2	Reducer Fitting; 1/2" x 3/8" NPT
13	102-387	1	Flow Control Plate; Mtg Hrd: Top 5/16" x 1 1/4" B, Lw, N, (2 ea) Bottom 5/16" x 1" B, Lw, N (2 ea) (<i>optional, holes must be drilled in shell if customer installed</i>)
14	102-526	1	Door Frame Extension; Mtg Hrd: Bottom 5/16" x 1" PHB, Fw, Lw, N, (3 ea) Side 5/16" x 1" B, Fw, Lw, N, (4 ea)
15	174-842	1	Decal, Door Gauge

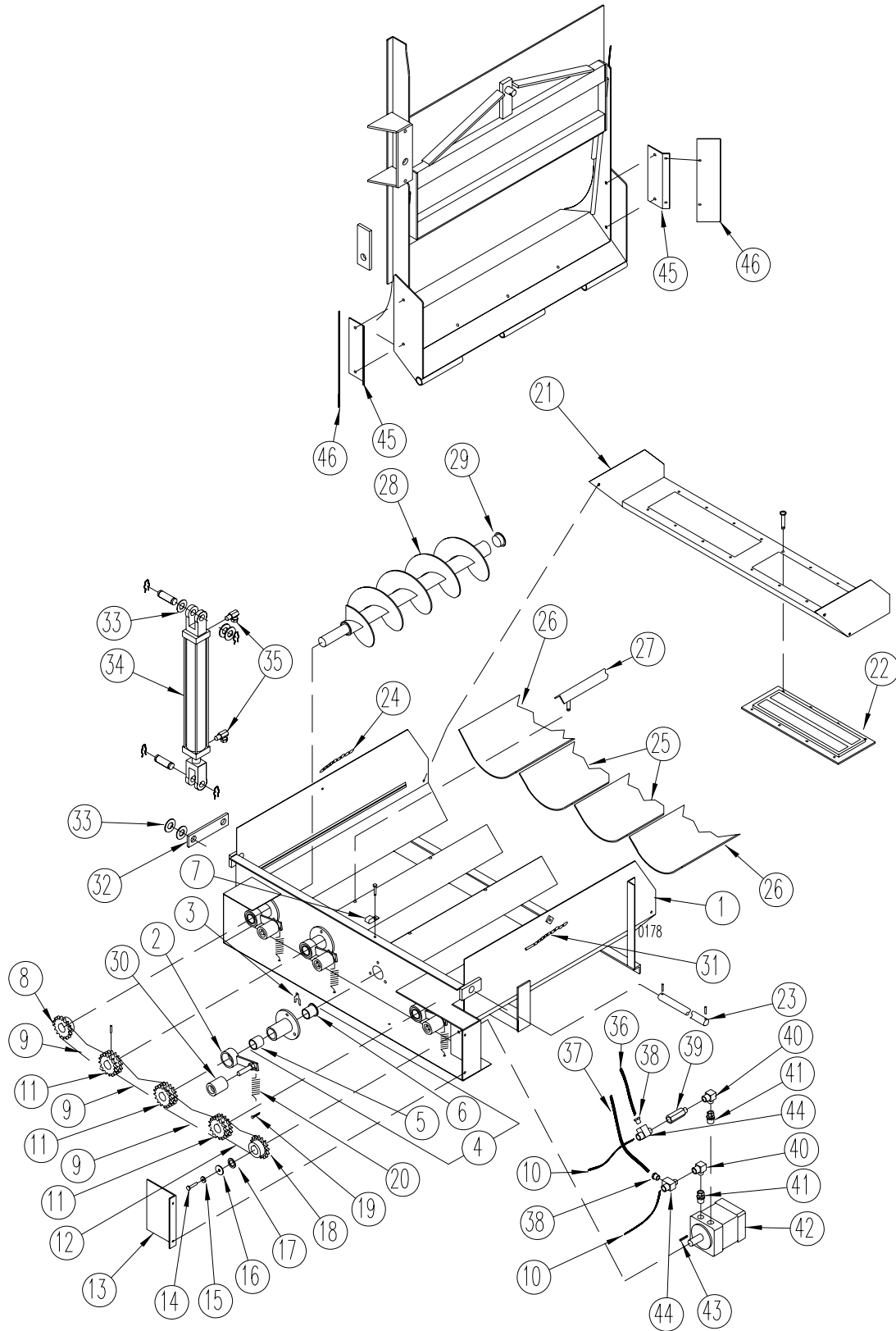


SLIDE TRAY PARTS

REF	PART NO	QTY	DESCRIPTION
1	102-527	1	Slide Tray Assembly
2	171-346	2	Discharge Magnet; Mtg Hrd: 1/4" x 3/4" PHB, Fw, Lw, N, (8 ea)
3	140-014	1	Skid Plate; Mtg Hrd: 1/4" x 3/4" PHB, Lw, N, (4 ea)
4	140-003	1	Pivot Rod 7/8" Dia x 46 11/16" Lg; Mtg Hrd 170-115 Cotter Key (Qty 2)
5	170-947	1	Wire "S" Hook #772
6	170-478	1	Machine Chain; #4 x 12 links
7	172-005	1	Spring - Extension; 1" Dia x 6" long
8	173-270	1	Hydraulic Cylinder; 2" dia. x 8" (<i>seal kit 170-075</i>); 173-274 Pin, 172-275 Hairpin
9	171-030	2	Swivel Adapter; 3/8" x 90°
10	170-471	1	Hydraulic Hose; 1/4" x 170" OAL
11	170-235	2	Reducer Fitting; 1/2" x 3/8" NPT
12	170-468	1	Hydraulic Hose; 1/4" x 162" OAL



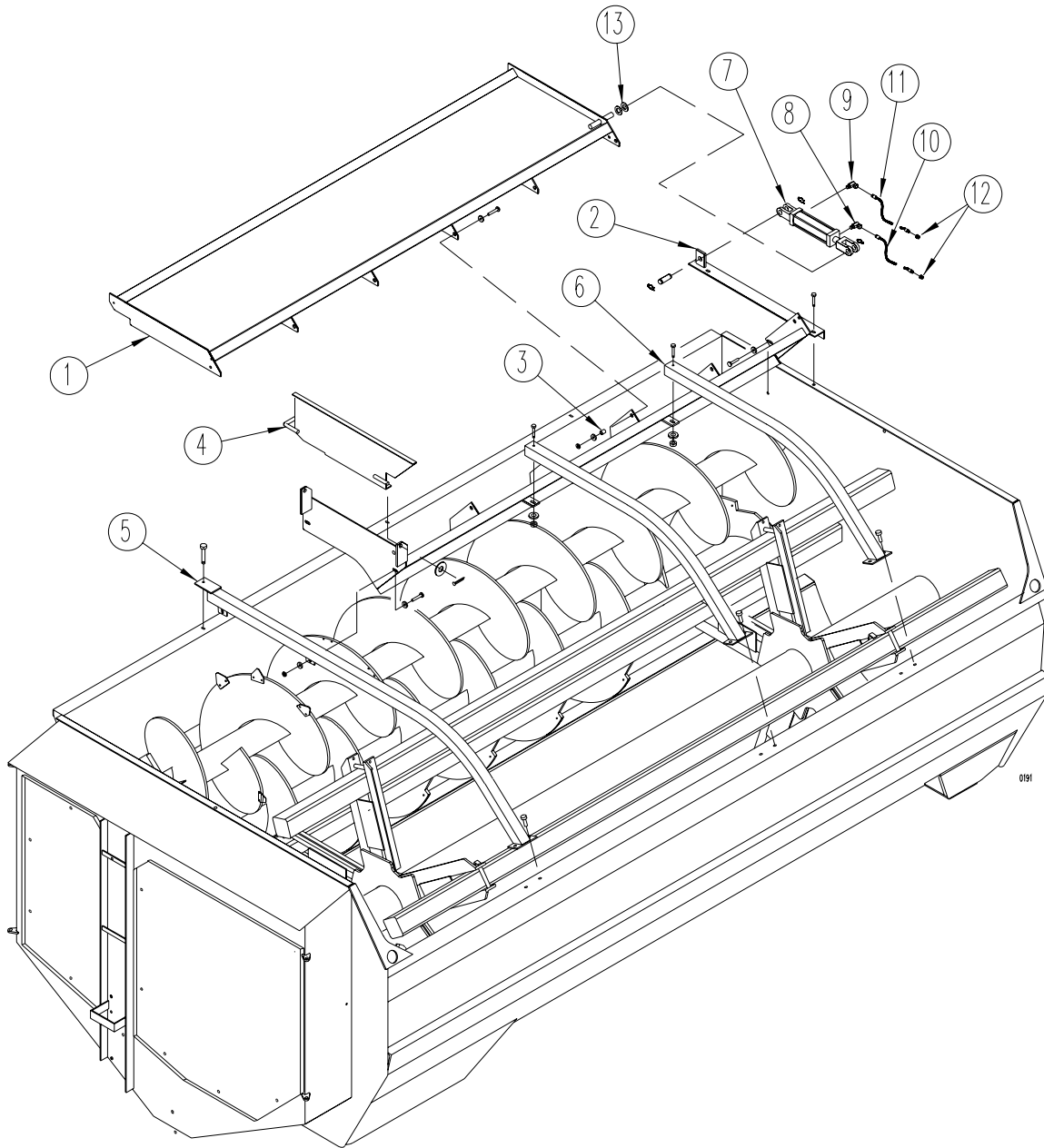
POWER CHUTE PARTS



POWER CHUTE PARTS

REF	PART NO	QTY	DESCRIPTION
	102-345	1	Complete Chute Assembly
1	102-346	1	Chute Weldment
2	101-231	4	Chain Tightener Arm
3	171-265	A/R	Shim; .017" Thick (1-2 each for auger adjustment)
4	101-227	4	Auger Bearing Assy; Mtg Hrd: 1-3/8" x 1" Bolt, Lw, Nut (3 ea)170-865 Zerk; (1 ea)
5	171-259	1	Bushing; Bronze, 1-3/8" I.D.
6	171-260	1	Bushing; Bronze 1-3/8" I.D. Flanged
7	171-782	1	Double Hose Clamp; Mtg Hrd: 5/16" x 3/4" Bolt, Lw & Nut
8	132-701	1	Sprocket; 50-B-18, 1-3/8" Bore; Mtg Hrd: 171-297 Roll Pin; 1/4" x 2-1/2" (1 ea)
9	171-932	3	Roller Chain; 50-1-56 Pitch, W/Connector Link
10	171-330	2	Hydraulic Hose; 1/2" x 168" OAL
11	134-390	3	Sprocket; 50-2R-18, 1-3/8" Bore; Mtg Hrd: 171-297 Roll Pin; 1/4" x 2-1/2" (1 ea)
12	171-178	1	Roller Chain; 50-1-48 Pitch, W/Connector Link
13	134-394	1	Motor Drive Shield; Mtg Hrd: 5/16" x 3/4" Bolt, Lw & Nut (2 ea)
14	170-262	1	Bolt; 5/16" x 3/4" Hex Head
15	170-118	1	Washer; 5/16" Lock
16	170-302	1	Washer; 3/8" Heavy
17	171-576	1	Machine Washer
18	134-389	1	Sprocket; 50-B-18, 1" Bore
19	170-056	4	Cotter Pin; 1/4" x 2"
20	170-110	4	Spring, Extension 4" Lg x 1 15/16" OD
21	102-347	1	Tipoff Assembly; Mtg Hrd: 5/16" x 3/4" Bolt, Lw & Nut (4 ea)
22	171-346	2	Magnet; Mtg Hrd: 1/4" x 3/4" Truss Head Bolt, Lw, Fw & Nut (8 ea)
23	140-001	1	Tipoff Pivot Rod 1" Dia x 51" Lg; Mtg Hrd: 170-115 Cotter Pin 3/16" x 2" (2 ea)
24	171-938	1	Chain; 4/0 Coil x 21 Link Mtg Hrd: 3/8" x 1" Bolt, FW, Ln (1 ea) 5/16" x 1" Truss Head Bolt, FW, LW, Nut (1 ea)
25	133-943	2	Plastic Chute Liner-Center; Mtg Hrd: 1/4" x 3/4" Truss Head Bolt, Lw, Nut (2 ea)
26	133-942	2	Plastic Chute Liner-Side; Mtg Hrd: 1/4" x 3/4" Truss Head Bolt, Lw, Nut (2 ea)
27	101-738	3	Liner Hold-Down Assy Mtg Hrd: 1/2" Jam Nut (spacer), 3/8" Ln, Fw (2 ea)
28	101-736	4	Auger Assy
29	171-186	4	Plastic Cap Plug; #16
30	134-395	4	Tightener Block, 2" Dia x 2 1/2" Lg; Mtg Hrd: 5/8" LW & Jam Nut
31	101-739	1	Chute Restraint Chain Assy;Mtg Hrd: 5/16" x 1" Truss Head Bolt, Fw, Lw, N 3/8" Fw, Ln
32	133-952	1	Chute Cylinder Linkage Bar; Mtg Hrd: 170-074 Hairpin Clip (1 ea)
33	170-122	5	Spacer Washer; 1" Sae Flat
34	173-220	1	Hydraulic Cylinder; 2" x 18" (Seal Kit #170-075)173-274 Pin, 172-275 Hairpin
35	171-030	2	Swivel Adapter; 3/8" x 90 Degree
36	171-428	1	Hyd Hose; 1/4" x 102" Overall Length
37	171-462	1	Hyd Hose; 1/4" x 76" Overall
38	170-235	2	Reducer Bushing; 1/2" to 3/8"
39	171-151	1	Line Check Valve; 1/2"
40	171-136	2	Street Elbow; 1/2" x 90°
41	171-668	2	Straight Thread Swivel Adapter
42	171-666	1	Hydraulic Motor; 12 cu.in. (Seal Kit #171-257) Mtg Hrd: 3/8" x 7/8" Bolt, Lw (4ea)
43	171-883	1	Key, Sq 1/4" x 1"
44	170-859	2	Service Tee; 1/2"
45	136-142	2	Seal Retainer Plate (power chute option only) Mtg Hrd: existing on door extension
46	136-143	2	Chute Seal (power chute option only)Mtg Hrd: 1/4" x 3/4" Bolt, Lw (2ea)

HAY MAXX PARTS

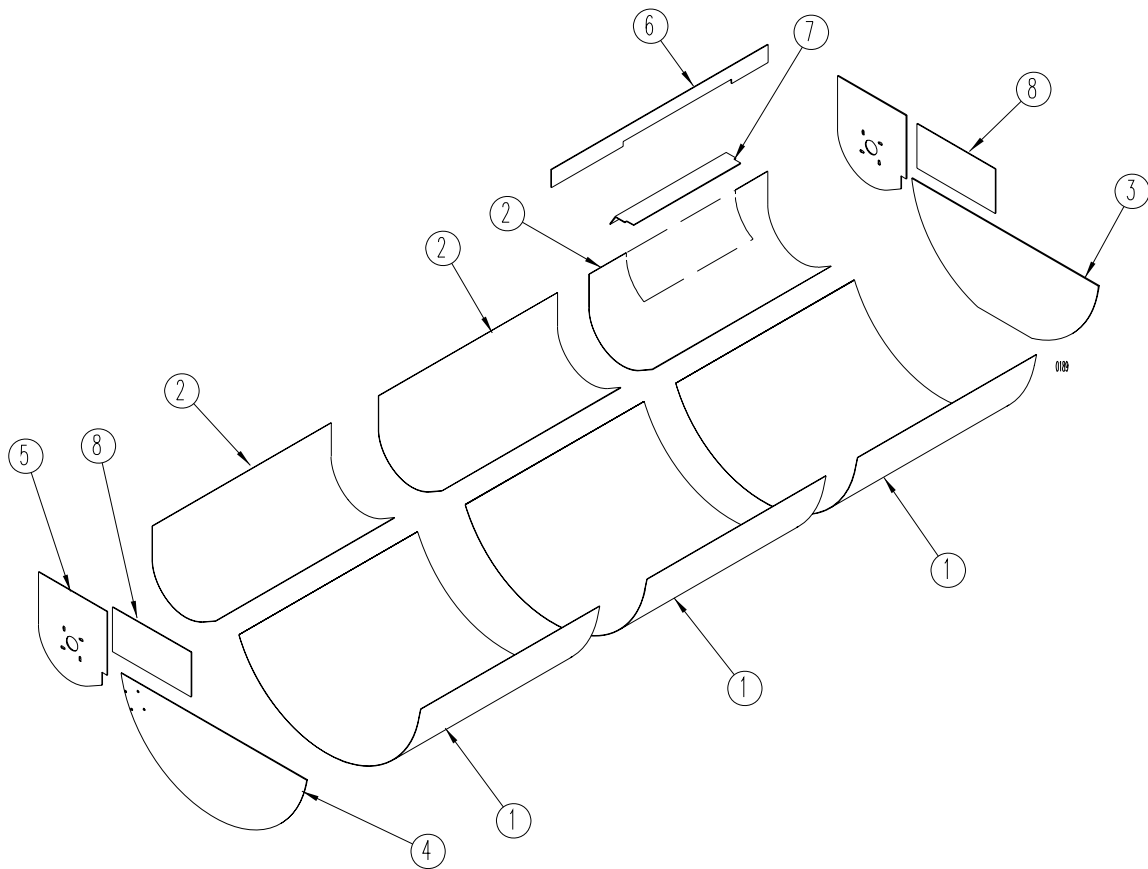


HAY MAXX PARTS

REF	PART NO	QTY	DESCRIPTION
1	102-484	1	Upper HAY MAXX Attachment; (3050 only) Mtg Hrd: 1/2" x 1 3/4" B, LN (6 ea), FW (10ea.)
	103-523	1	Upper HAY MAXX Attachment; (3060 & 3070) Mtg Hrd: 1/2" x 1 3/4" B, LN (7 ea), FW (12 ea.)
2	103-526	1	Lower HAY MAXX Attachment; (3050 only)
	103-522	1	Lower HAY MAXX Attachment; (3060 & 3070) Mtg Hrd: 1/2" x 1-1/4" Bolt,Fw, Ln(3 ea.) 1/2" x 1-1/2" Bolt, Ln(2 ea), Fw (4 ea.)
3	134-771	6	Pivot Bushing (3050 only)
	134-771	7	Pivot Bushing (3060 & 3070)
4	102-479	1	Haypan Backstop; Mtg Hrd: 3/4" Fw, 3/16" x 2" Cotter Pin
5	103-524	1	Bucket Guard; Mtg Hrd: Left side 1/2" x 1 1/4" bolt, Fw, Lw, N (1 ea) Right side 3/8" x 1" bolt, Lw, N (2 ea)
	103-521	1	Bucket Guard (3070 only)
6	103-525	2	Bucket Guard; Mtg Hrd: 1/2" x 4" B, Fw, Ln (1ea.) 3/8" x 1 B, Lw, N (2 ea)
7	173-273	1	Hydraulic Cylinder; 2" Dia. x 10" (<i>seal kit 170-075</i>); 173-274 Pin, 172-275 Hairpin
8	171-030	1	90 Deg. Swivel Adapter; 3/8"
9	171-723	1	90 Deg. Swivel Restrictor; 3/8"
10	170-468	1	Hydraulic Hose; 1/4" x 162"
11	170-471	1	Hydraulic Hose; 1/4" x 170"
12	170-235	2	Reducer Fitting; 1/2" To 3/8"
13	170-122	A/R	Spacer Washer; 1" SAE Flat (6-9 required)
	172-442	1	Electric Switching Valve (Optional) Mounted On Tractor

REPAIR LINER PARTS

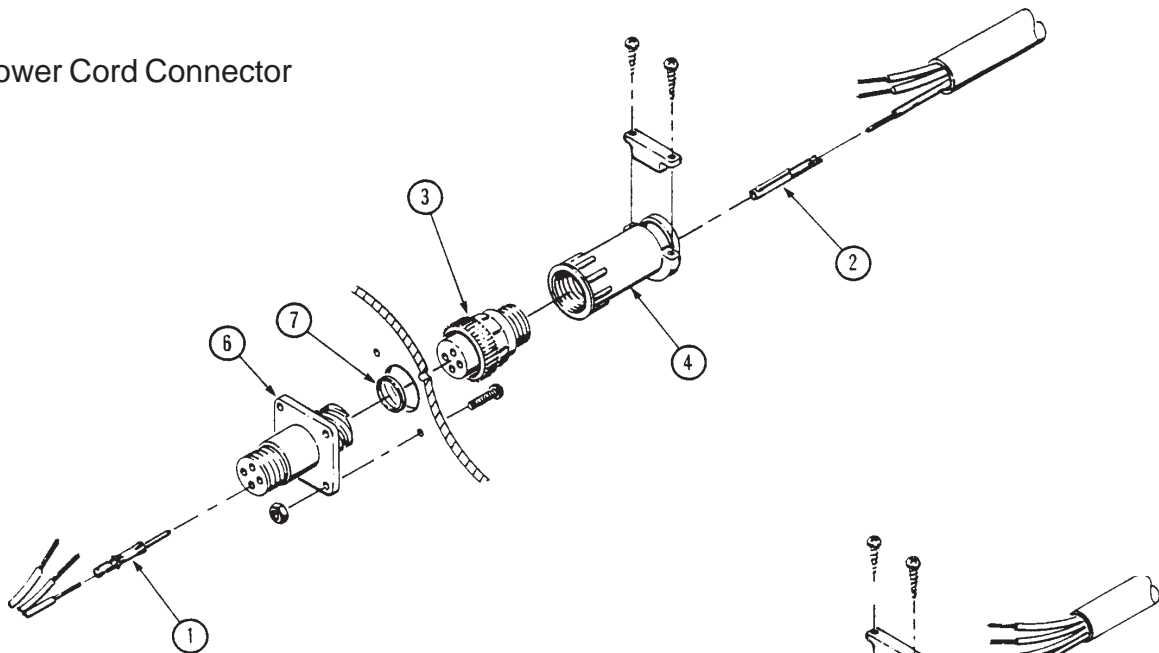
REF	PART NO		QTY	DESCRIPTION
	Stainless Steel	Hot Rolled Steel		
1	136-030	136-751	3	Reel Liner (3050 only)
	136-038	136-752	3	Reel Liner (3060 only)
	140-530	140-529	4	Reel Liner (3070 only)
2	136-031	136-753	3	Auger Liner (3050 only)
	136-039	136-754	3	Auger Liner (3060 only)
	140-532	140-531	4	Auger Liner (3070 only)
3	136-036	136-755	1	Reel End Liner (<i>front</i>)
4	136-037	136-756	1	Reel End Liner (<i>rear</i>)
5	136-035	136-757	2	Auger End Liner
6	136-033	136-758	1	Upper Door Liner
7	136-032	136-759	1	Door Opening Liner
8	136-034	136-760	2	Upper Reel End Liner



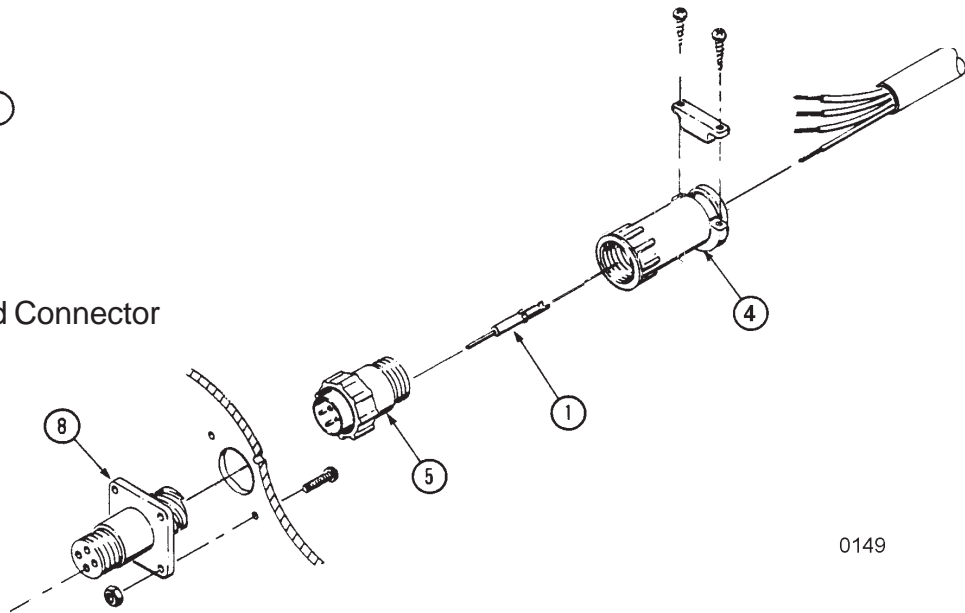
SCALE CONNECTOR REPAIR PARTS

REF	PART NUMBER	QTY	DESCRIPTION
1	173-211	4	Contact Pin
2	173-212	4	Contact Socket
	173-216	1	Pin Extraction Tool (<i>not shown</i>)
3	173-213	1	Power Cord Connector
	174-923	1	Power Cord Nut
4	173-214	1	Power Cord Strain Relief
5	173-215	1	Junction Box Cord Connector
	174-923	1	Power Cord Nut
6	173-217	1	Power Connector Chassis
7	173-218	1	Seal for Power Connector Chassis
8	173-219	1	Load Cell Connector Chassis

Power Cord Connector

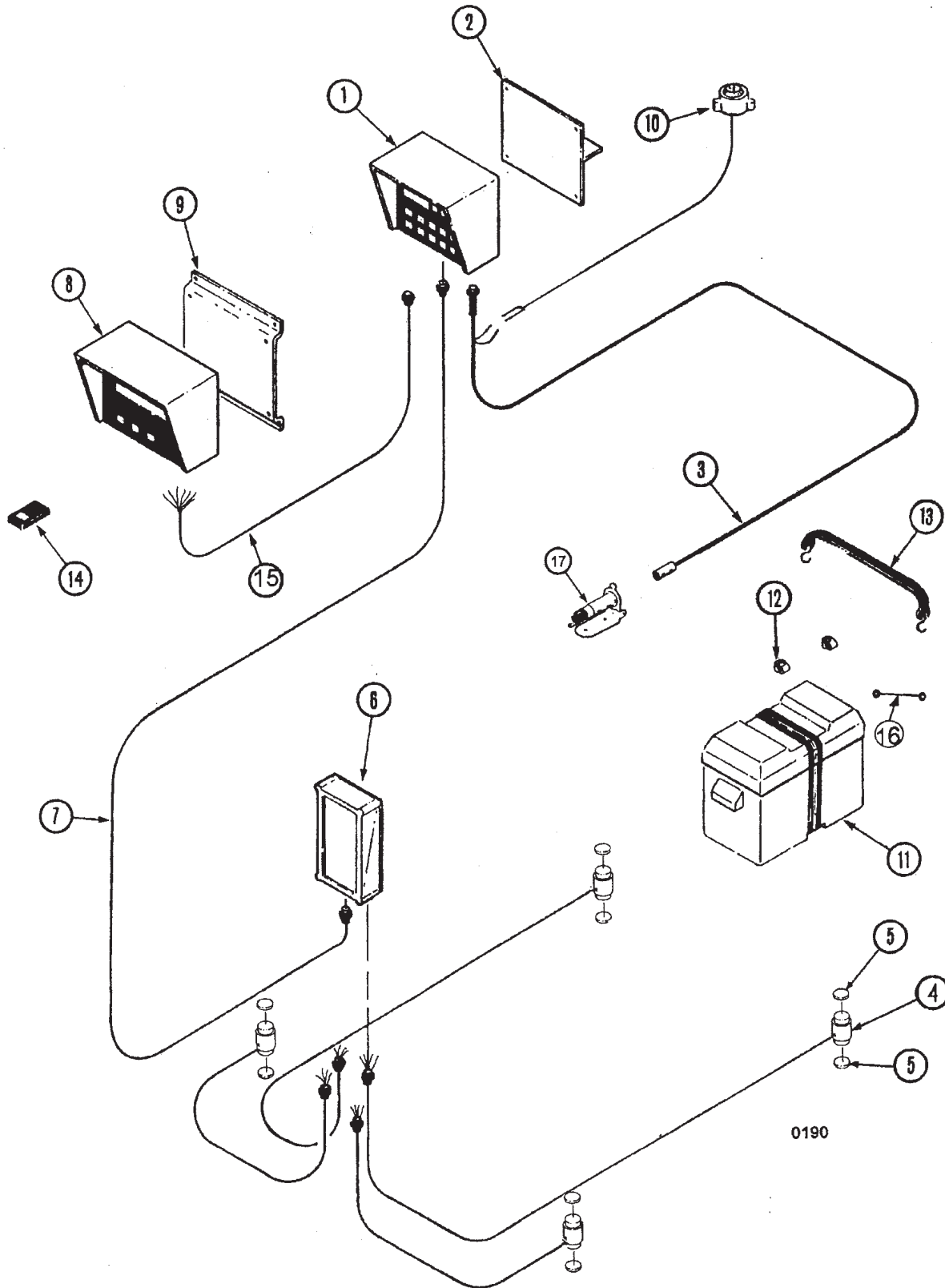


Junction Box Cord Connector



0149

SCALE PARTS



0190

SCALE PARTS

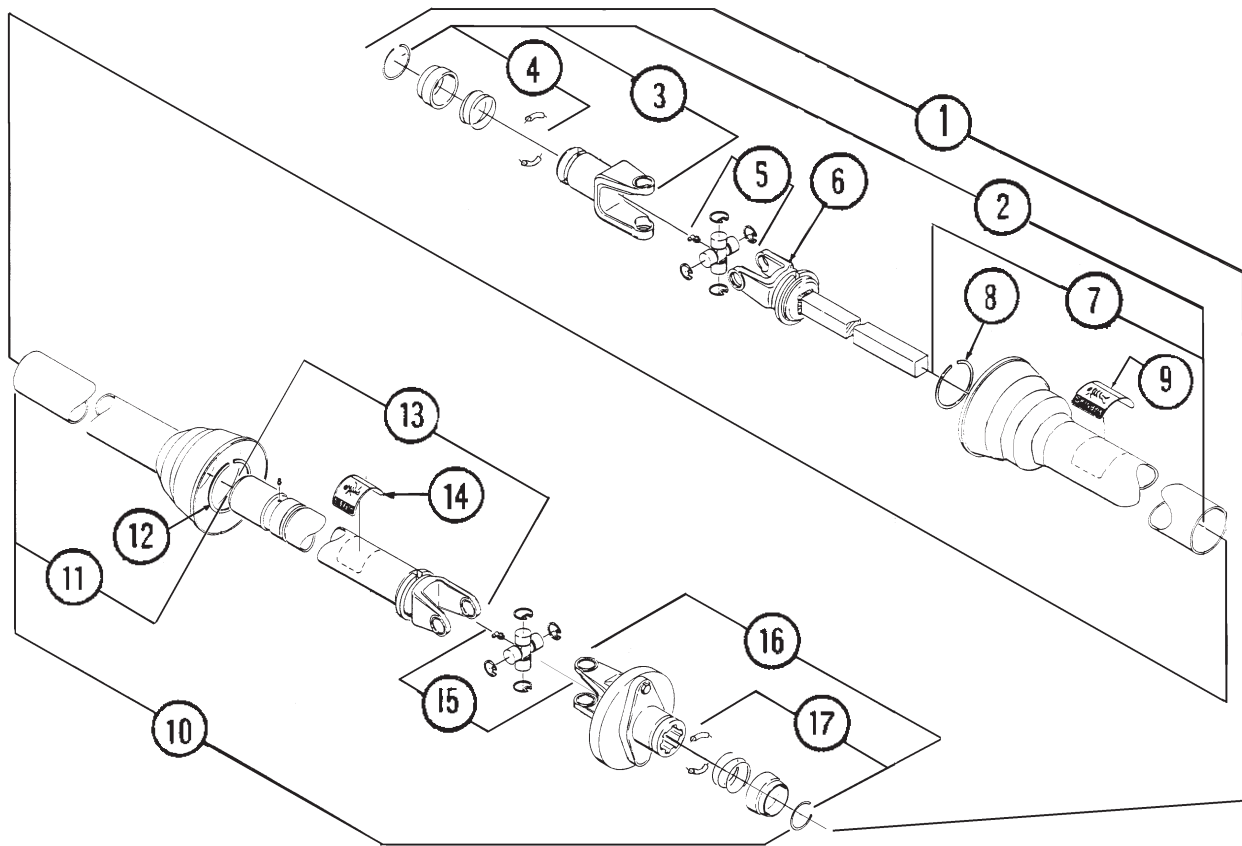
REF	PART NO	QTY	DESCRIPTION
1	172-128	1	Digi-Star Model EZ-2000 Basic Indicator
	172-800	1	Digi-Star Model EZ-View 2000 Indicator, 1.7" Display
	172-130	1	Digi-Star Model EZ-3200V Indicator
	174-501	1	Digi-Star Model EZ-3200V Indicator (with serial port)
	172-500	1	Digi-Star Model EZ-3200 Indicator
	174-502	1	Digi-Star Model EZ-3200 Indicator (with serial port)
	173-225	1	Weigh-tronix Model 615 Basic Indicator
	173-226	1	Weigh-tronix Model 615 Basic Indicator, 2" Display
	173-227	1	Weigh-tronix Model 715 Indicator
	174-503	1	Weigh-tronix Model 715 Indicator (with port)
	173-228	1	Weigh-tronix Model 1015 Indicator
	174-504	1	Weigh-tronix Model 1015 Indicator (with port)
			Mtg Hrd for all indicators: 1/4" x 3/4" Bolt, Fw, Lw & Nut (2 ea)
2	101-835	1	Indicator Mount Mtg Hrd: Spring (170-238) 3/8" x 2" Bolt, Fw & Ln
3	172-354	1	Power Cord Assy
4	173-034*	4	Load cell (Digi-Star)
			Note: Manufacturer of your weigh bar may be different than indicator manufacturer. Always check weigh bar on unit for manufacturer before ordering.
	174-508*	4	Load cell (Weigh-tronix)
5	137-132	8	Shock pad (2 required for each Load Cell)
6	103-052	1	Junction Box W/15' cable; #10 x 1" SMS (2 ea)
7	173-156	1	15' Replacement Junction box cable
	172-165	1	30' Junction box extension cable (not shown)
	172-166	1	10' Junction box extension cable (not shown)
Optional Items:			
8	172-803	1	Digi-Star EZ-R Remote, 1" Display w/ 25' Cord
	172-801	1	Digi-Star EZ-View Remote, 1.7" Display w/ 25' Cord
	172-804	1	Digi-Star EZ-R Remote, 1" Display w/ Transmitter & 25' Cord
	172-802	1	Digi-Star EZ-View TR Remote, 1.7" Display w/ Transmitter & 25' Cord
	174-505	1	Weigh-tronix 712 Remote, 1" Display w/ 30' Cord
	174-506	1	Weigh-tronix 712XL Remote, 2" Display w/ 30' Cord
	174-507	1	Weigh-tronix 1012 Remote, 1" Display w/ 30' Cord
9	134-409	1	Remote Indicator Mount, Mtg Hrd: 5/16" x 3/4" B, Lw, Nut (2 ea), 1/4" x 3/4" Bolt, Fw, Lw, Nut (2ea)
10	101-917	1	Digi-Star Alarm Horn Assembly Mtg Hrd: #6 x 3/4" B, Lw, Nut (2 ea)
	101-918	1	Weigh-tronix Alarm Horn Assembly Mtg Hrd: #6 x 3/4" B, Lw, Nut (2 ea)
11	171-158	1	Battery Box
12	171-380	2	Battery Terminals
13	171-936	1	Battery Hold-Down Strap
14	172-143	1	Digi-Star hand held transmitter (<i>Installed Receiver is Required</i>)
	172-350	1	Weigh-tronix hand held transmitter (<i>Installed Receiver is Required</i>)
15	174-719	1	EZ-R Remote Indicator Cord
16	132-988	1	16 Ga. Ground
17	170-415	1	Plug - Tractor Mount
Service Tools:			
	172-386		Precision Calibrator For Scale Indicators
	171-960		Cord Splice Kit

* All (4) load cells must be the same type to properly function and will work with either the Digi-Star or Weigh-tronix indicator.

PTO DRIVELINE - 3050 ONLY

(540 RPM - 6 Spline - 1-3/8" Yoke)

REF	PART NUMBER	QTY	DESCRIPTION
1	173-309	1	Driveline Complete
2	173-316	1	Joint and Shaft Half with Guard
3	171-542	1	Yoke Assembly
4	171-544	1	Safety Slide Lock Repair Kit
5	170-776	1	Cross and Bearing Kit
6	173-318	1	Yoke and Shaft
7	173-320	1	Outer Guard
8	170-220	1	Nylon Repair Kit
9	171-550	1	Safety Decal
10	172-989	1	Joint and Tube Half with Guard
11	172-847	1	Inner Guard
12	170-220	1	Nylon Repair Kit
13	172-845	1	Yoke Tube and Slip Sleeve
14	171-799	1	Safety Decal
15	170-776	1	Cross and Bearing Kit
16	172-924	1	Ball Shear Clutch
	172-987	1	Shear Bolt; 5/16" x 2" (grade 5)
	170-028	1	Lock Nut; 5/16" (grade 5)
17	171-544	1	Safety Slide Lock Repair Kit

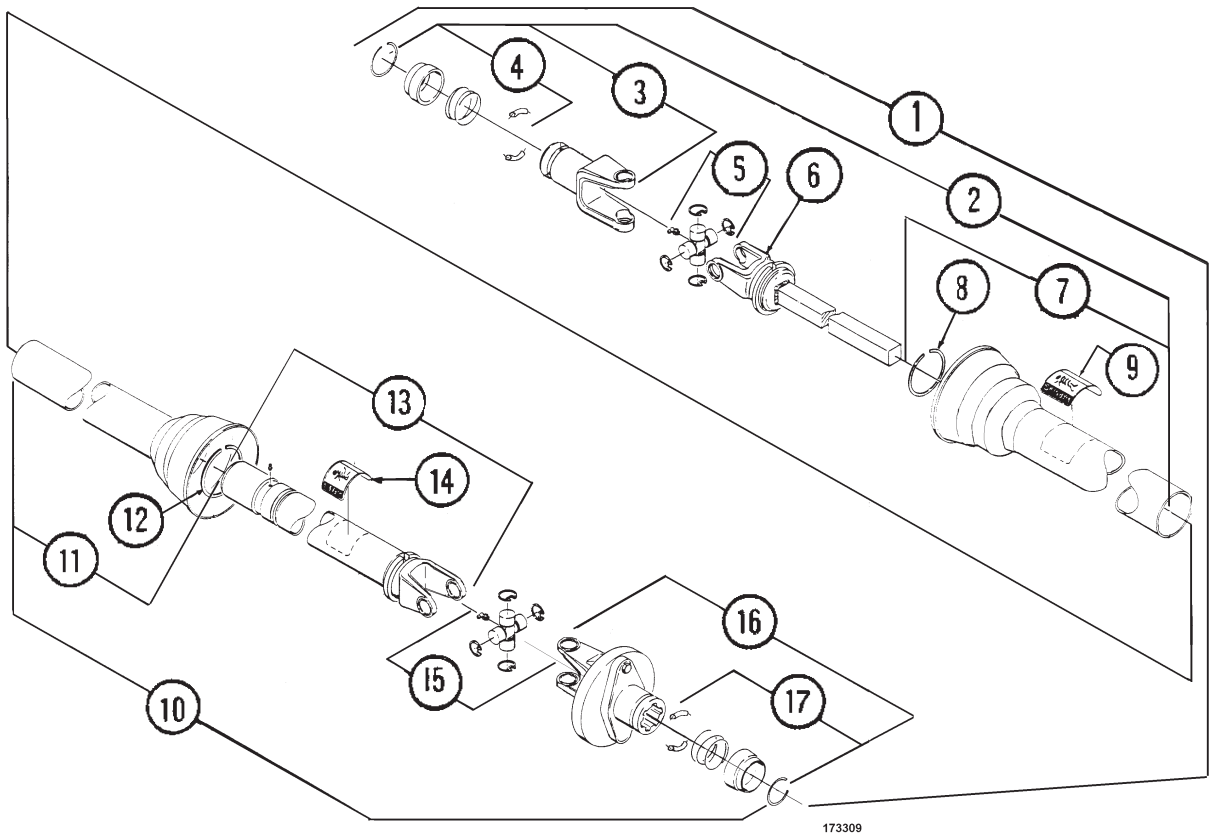


173309

PTO DRIVELINE - 3050 & 3060

(1000 RPM - 21 Spline - 1-3/8" Yoke)

REF	PART NUMBER	QTY	DESCRIPTION
1	173-308	1	Driveline Complete
2	173-315	1	Joint and Shaft Half with Guard
3	171-543	1	Yoke Assembly
4	171-544	1	Safety Slide Lock Repair Kit
5	170-776	1	Cross and Bearing Kit
6	173-318	1	Yoke and Shaft
7	173-320	1	Outer Guard
8	170-220	1	Nylon Repair Kit
9	171-550	1	Safety Decal
10	172-990	1	Joint and Tube Half with Guard
11	172-847	1	Inner Guard
12	170-220	1	Nylon Repair Kit
13	172-845	1	Yoke Tube and Slip Sleeve
14	171-799	1	Safety Decal
15	170-776	1	Cross and Bearing Kit
16	172-925	1	Ball Shear Clutch
	172-986	1	Shear Bolt; 1/4" x 2" (grade5)
	170-069	1	Lock Nut; 1/4" (grade 5)
17	171-544	1	Safety Slide Lock Repair Kit

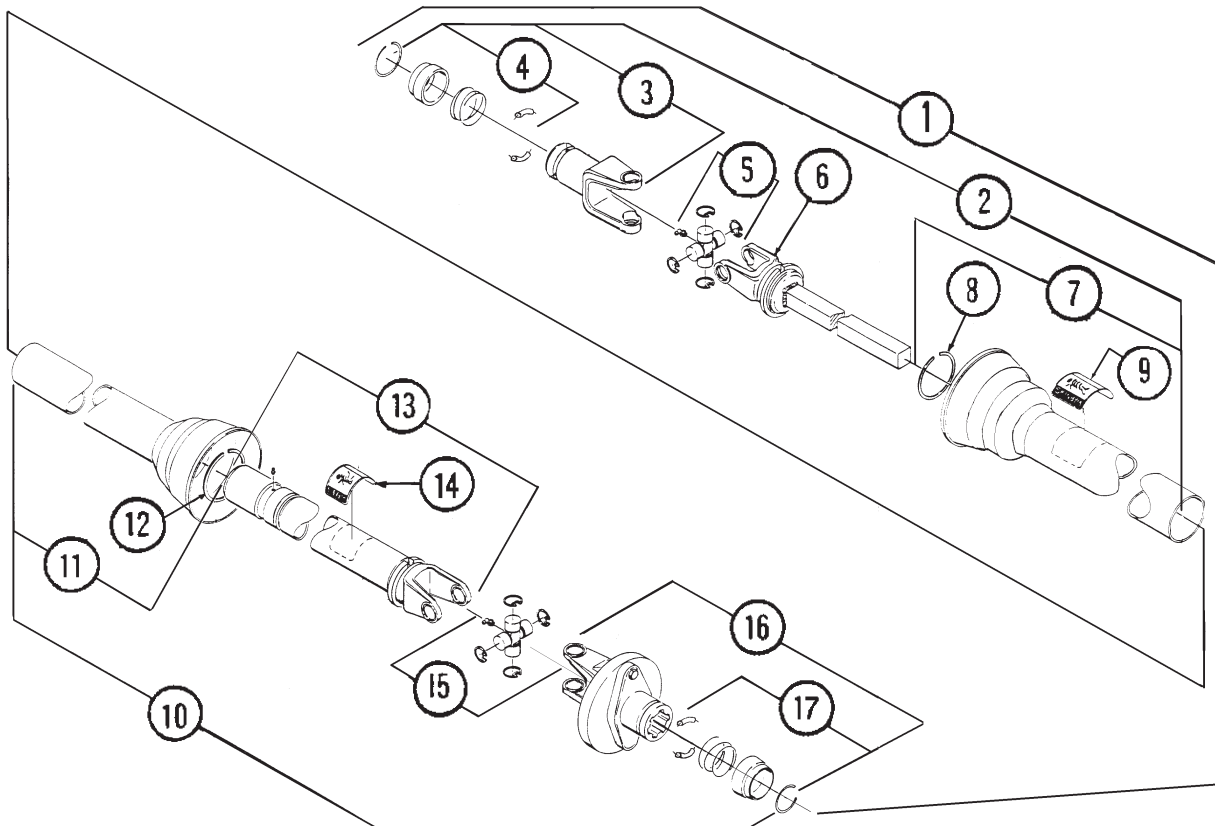


173309

PTO DRIVELINE - 3050 & 3060

(1000 RPM - 20 Spline - 1-3/4" Yoke)

REF	PART NUMBER	QTY	DESCRIPTION
1	173-312	1	Driveline Complete
2	173-317	1	Joint and Shaft Half with Guard
3	172-447	1	Yoke Assembly
4	172-496	1	Safety Slide Lock Repair Kit
5	170-776	1	Cross and Bearing Kit
6	173-319	1	Yoke and Shaft
7	173-321	1	Outer Guard
8	170-220	1	Nylon Repair Kit
9	171-550	1	Safety Decal
10	172-907	1	Joint and Tube Half with Guard
11	172-994	1	Inner Guard
12	170-220	1	Nylon Repair Kit
13	172-993	1	Yoke Tube and Slip Sleeve
14	171-799	1	Safety Decal
15	170-776	1	Cross and Bearing Kit
16	172-925	1	Ball Shear Clutch
	172-986	1	Shear Bolt; 1/4" x 2" (grade5)
	170-069	1	Lock Nut; 1/4" (grade 5)
17	171-544	1	Safety Slide Lock Repair Kit

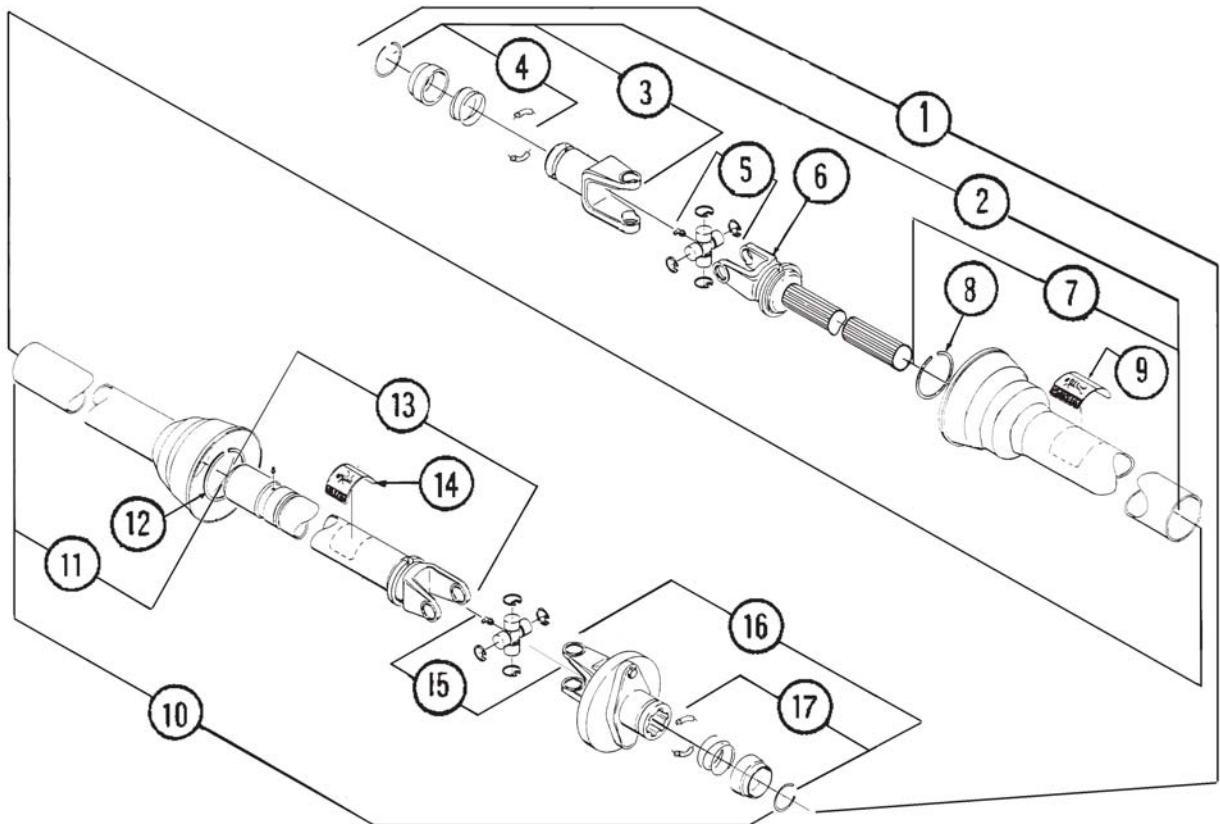


173309

PTO DRIVELINE - 3070 ONLY

(1000 RPM - 21 Spline - 1-3/8" Yoke)

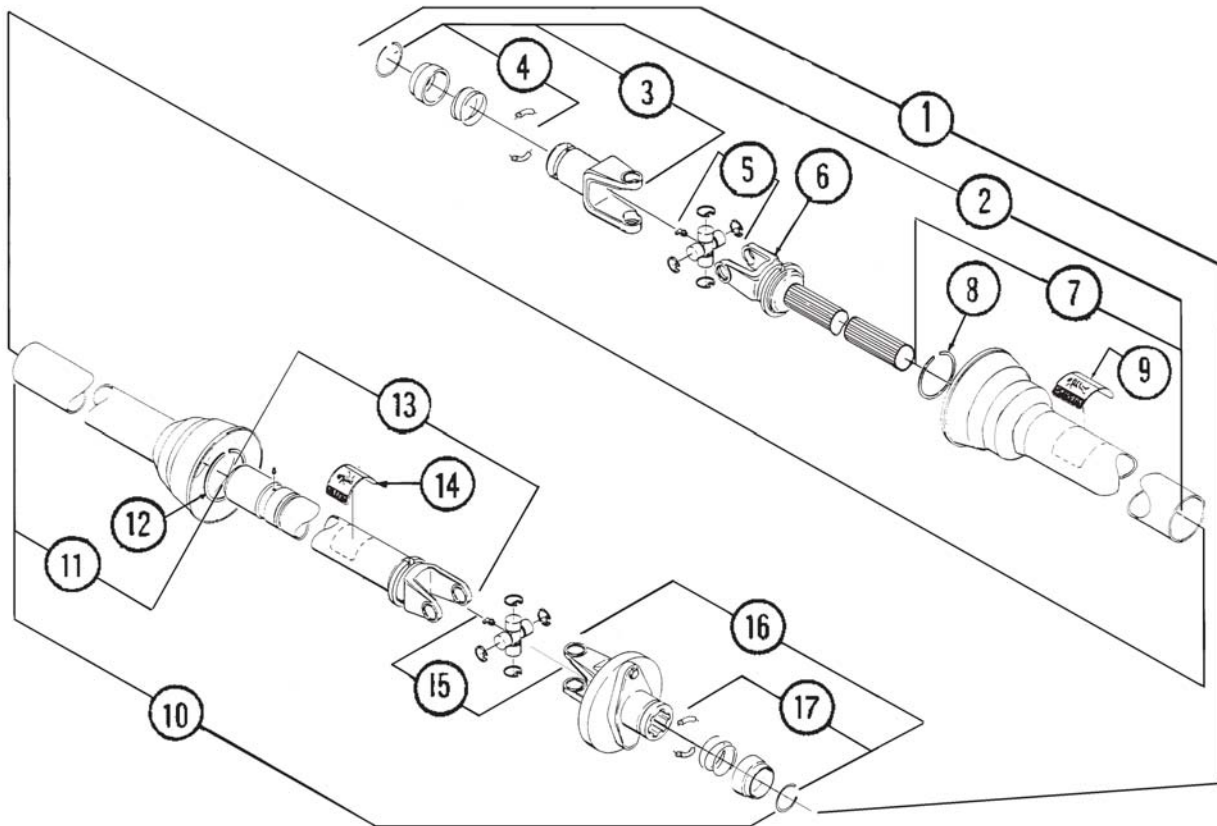
REF	PART NUMBER	QTY	DESCRIPTION
1	174-681	1	Driveline Complete
2	174-689	1	Joint and Shaft Half with Guard
3	171-543	1	Yoke Assembly
4	171-544	1	Safety Slide Lock Repair Kit
5	170-776	1	Cross and Bearing Kit
6	174-683	1	Yoke and Shaft
7	173-320	1	Outer Guard
8	170-220	1	Nylon Repair Kit
9	171-550	1	Safety Decal
10	174-690	1	Joint and Tube Half with Guard
11	172-847	1	Inner Guard
12	170-220	1	Nylon Repair Kit
13	173-426	1	Yoke Tube and Slip Sleeve
14	171-799	1	Safety Decal
15	170-776	1	Cross and Bearing Kit
16	172-924	1	Ball Shear Clutch
	172-987	1	Shear Bolt; 5/16" x 2" (grade5)
	170-028	1	Lock Nut; 5/16" (grade 5)
17	171-544	1	Safety Slide Lock Repair Kit



PTO DRIVELINE - 3070 ONLY

(1000 RPM - 20 Spline - 1-3/4" Yoke)

REF	PART NUMBER	QTY	DESCRIPTION
1	174-682	1	Driveline Complete
2	174-695	1	Joint and Shaft Half with Guard
3	172-447	1	Yoke Assembly
4	172-496	1	Safety Slide Lock Repair Kit
5	170-776	1	Cross and Bearing Kit
6	174-684	1	Yoke and Shaft
7	173-321	1	Outer Guard
8	170-220	1	Nylon Repair Kit
9	171-550	1	Safety Decal
10	174-696	1	Joint and Tube Half with Guard
11	172-994	1	Inner Guard
12	170-220	1	Nylon Repair Kit
13	173-435	1	Yoke Tube and Slip Sleeve
14	171-799	1	Safety Decal
15	170-776	1	Cross and Bearing Kit
16	172-924	1	Ball Shear Clutch
	172-987	1	Shear Bolt; 5/16"-18 x 2.00"LG (grade5)
	170-028	1	Lock Nut; 5/16"-18 (grade 5)
17	171-544	1	Safety Slide Lock Repair Kit



174681

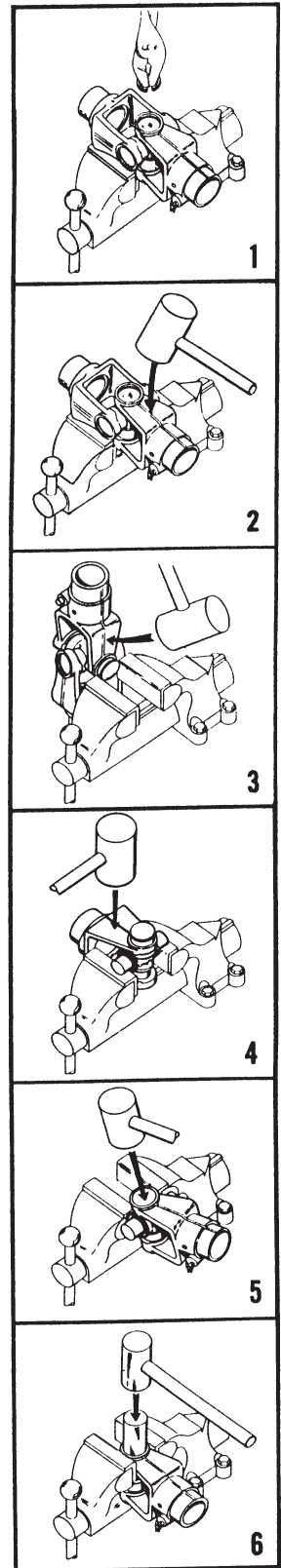
DRIVELINE CROSS REPAIR**DISASSEMBLY PROCEDURE:**

1. Remove the four snap rings as shown in Figure #1.
2. Position the joint in an open vise, with each ear of one yoke supported by a vise jaw. Figure #2
3. With a soft hammer or mallet, strike the top ear of the unsupported yoke as indicated by the arrow in figure #2. This will drive the top bushing outward approximately 3/8 of an inch.
4. Grip the loosened bushing in the vise as shown in Fig. #3. Drive the yoke off the bushing by striking the yoke ear with a mallet in the direction of the arrow. (Fig. #3)
5. This same procedure should be followed to remove the bushing that is directly opposite the one in Step 4. After this, the yoke itself may be removed.
6. To remove the remaining two bushings, support the cross as shown in Figure #4. Make certain that the vise jaws are covered with brass protectors. By striking the yoke ear as indicated by the arrow in Figure #4, the remaining bushings can be removed by repeating the procedure called for in Step 4 & Figure #3.

ASSEMBLY PROCEDURE:

DURING REASSEMBLY, BE SURE THAT THERE IS NO DIRT ON THE TRUNNIONS OF THE CROSS OR IN THE BUSHINGS!

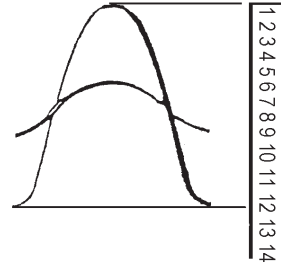
1. Start one bushing in the yoke ear and position the center cross through the yoke. Drive the first bushing down flush with the outside surface of the ear as shown in Fig. #5. Support the underside of the ear so as not to spring the yoke.
2. Clamp the ear in the vise as shown in Figure #6. Use a punch of the same diameter as the bushing, drive the bushing past the snap ring groove, and insert a snap ring.
3. Position the cross and drive in the opposite bushing as described in Steps 1 & 2, and insert a snap ring.
4. Assemble the second yoke in the same manner.
5. To insure proper seating, and to eliminate any possible tightness, strike the forged surfaces of the yoke ears with a mallet. This will insure a free flexing joint.
6. Lubricate with a good grade of multipurpose grease.



FLIGHTING TERMS AND DIMENSIONS

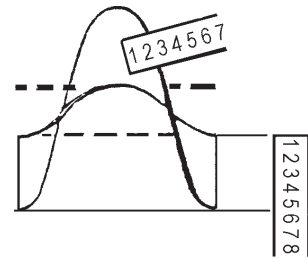
OUTSIDE DIAMETER: Outside diameter can be determined by laying the flight on a flat surface and measuring from the top to the base.

NOTE: Dimensions may vary slightly.

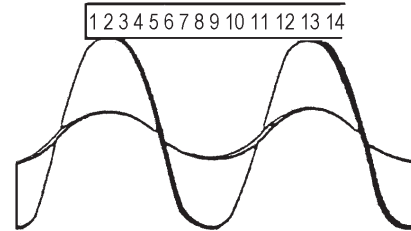


THICKNESS: Thickness of flighting can be determined with any linear measuring instrument.

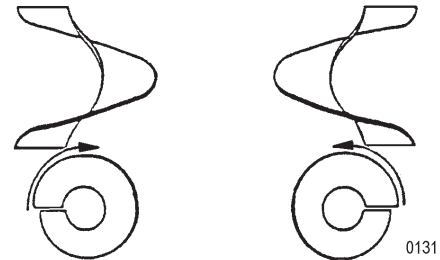
INSIDE DIAMETER: To find the inside diameter of flight, measure the distance from the inside of the flight to the peak. Then multiply the dimension by two and subtract the answer from the outside diameter dimension.



PITCH: Pitch is the dimension from one peak to the next, measured along the axis of the shaft. The term full pitch means that the outside diameter and the pitch are the same.



RIGHT HAND AND LEFT HAND FLIGHTING: As you look at the face of flighting and it is slanting downward to the right; it is right hand and if it is slanting downward to the left; it is left hand.



Flighting dimensions are written in a series similar to the following:

1/4" - 4" - 14" - 14"
 Thick - I.D. - O.D. - Pitch

DECALS

The following decals are listed below for your convenience.
Use the operator's manual for decal location, part number and ordering.

Unit Decals:

PART NO	QTY	DESCRIPTION	PART NO	QTY	DESCRIPTION
174-634	1	Complete Decal Set For 3050	172-820	1	WARNING - Lifting . . .
174-637	1	Complete Decal Set For 3060	172-883	1	Oil Level Plug
174-700	1	Complete Decal Set For 3070	173-040	1	CAUTION PTO Operation. . .
170-490	1	IMPORTANT - Reduce Engine . . .	173-041	1	Shear Bolt Information. . .
170-849	3	WARNING - Stay Clear Of . . .	173-044	1	Made in Wisconsin. . .
170-893	1	SMV Symbol	173-078	1	DANGER Shield Missing. . .
171-712	1	NOTICE - Retighten Set . . .	173-447	2	"REEL AUGGIE"
171-748	1	Door Gauge	173-448	17ft	Stripe For 3050 Only
171-820	4	DANGER - Rotating Auger . . .		22ft	Stripe For 3060
171-911	1	NOTICE - Operating Precautions		27 ft	Stripe For 3070
171-913	1	WARNING - Do Not Operate . . .	174-514	3	"KNIGHT"
171-914	2	WARNING - Stay Clear Of . . .	174-556	1	HAY MAXX SYSTEM
171-915	2	DANGER - Shield Missing . . .	174-562	1	"3050" For 3050 Only
171-947	4	DANGER - Do Not Hand Load . . .	174-563	1	"3060" For 3060 Only
171-948	1	BEWARE - If Mixer . . .	174-671	1	"3070" For 3070 Only
171-949	1	"U.S. Patent No. . . ."	174-686	3	Decal; Red Reflector
172-292	1	Mixer Full Line	174-687	1	Decal; Amber Reflector
172-786	1	DANGER - Rotating . . .	174-892	1	Door ; 9 Gauge

Power Chute and Slide tray Decals:

171-914	2	WARNING - Stay Clear of Chute...
174-687	1	Amber Reflector
174-686	1	Red Reflector

PTO Driveline Decals:

171-550	1	DANGER - Rotating Driveline
171-799	1	DANGER - Shield Missing
171-599	1	Do Not Exceed 540 RPM (540 RPM units only)
171-609	1	Do Not Exceed 1000 RPM (1000 RPM units only)

PAINT LIST:

170-366 Knight Yellow Aerosol Can	170-367 Knight Red Aerosol Can
170-812 Knight Yellow Quart Can	170-814 Knight Red Quart Can
170-813 Knight Yellow Gallon Can	170-815 Knight Red Gallon Can

OPTIONAL KITS**Safety Chain For Towed Equipment****172-041 30,000#, (3050 only)****133-077 40,000#, (3060 & 3070)**

This chain is designed to retain the connection between the towing and towed machines in the event of separation of the primary attaching system. It should be used whenever the unit is transported on the highway.

103-387 Door Flow Control Plate, 5/16" x 1.25" bolt, LW, Nut

HARDWARE PART NUMBER LISTING

All hex head bolts up to and including 1/2" dia are grade 5 unless otherwise specified. All fasteners are NC thread unless otherwise specified.

HEX NUTS AND WASHERS

SIZE	Hex Nuts	Lock Nuts	Jam Nuts	Flat Washer	Lock Washer
#6-32	172-418	174-188			172-417
#10-32	171-606	174-073		171-525	171-605
1/4"	170-125	170-069	171-386	170-301	170-124
5/16"	170-119	170-137	173-521	170-127	170-118
3/8"	170-007	170-047	170-022	170-244	170-006
7/16"	170-062	170-239	170-046	170-138	170-061
1/2"	170-004	170-042	170-036	170-040	170-003
5/8"	170-011	170-031	170-037	170-066	170-010
3/4"	170-017	170-185	170-035	170-015	170-016
7/8"	171-776	171-093		173-298	172-003
1"	173-022	174-928	174-927	170-122	171-021
1-1/4"	170-130 NF/175-006 NC			170928	175-005

HEX HEAD BOLTS

Bolt Size	Part No	3/8 x 4-1/2	170-519	5/8 x 1-3/4 (Full thread)	170-030
1/4 x 3/4	170-803	3/8 x 5	170-493	5/8 x 2	170-009
1/4 x 7/8	171-094	3/8 x 5-1/2	174-196	5/8 x 2 (Full thread)	171-772
1/4 x 1	170-310	3/8 x 5-1/2 (Full thread)	170-593	5/8 x 2-1/4	173-009
1/4 x 1-1/2	170-068	3/8 x 6	174-304	5/8 x 2-1/2 (Full thread)	170-129
1/4 x 2	172-986	3/8 x 6-1/2	171-291	5/8 x 2-1/2	172-381
1/4 x 2 (Grade 8)	175-073	7/16 x 1	170-032	5/8 x 2-3/4	172-356
1/4 x 2-3/4	171-203	7/16 x 1-1/4	170-354	5/8 x 3	170-258
1/4 x 3	171-403	7/16 x 1-1/4 (Grade 8)	174-216	5/8 x 3-1/2	170-038
1/4 x 3-1/2	173-640	1/2 x 3/4	171-252	5/8 x 4-1/2	170-067
1/4 x 4	173-505	1/2 x 1	170-149	5/8 x 5	170-065
5/16 x 3/4	170-262	1/2 x 1-1/4	170-373	5/8 x 5-1/2	172-421
5/16 x 3/4 (Stainless steel)	174-787	1/2 x 1-1/2	170-002	5/8 x 7-1/2	173-019
5/16 x 1	170-027	1/2 x 1-3/4	171-774	5/8 x 9-1/2	171-039
5/16 x 1-1/4	170-188	1/2 x 2	171-802	3/4 x 2 (Full thread)	170-058
5/16 x 1-1/2	170-372	1/2 x 2-1/4	172-387	3/4 x 2	171-768
5/16 x 1-3/4	170-263	1/2 x 2-1/2 (Full thread)	171-099	3/4 x 2 (Grade 8)	171-877
5/16 x 2	172-987	1/2 x 2-1/2	170-885	3/4 x 2-1/4	171-275
5/16 x 2-1/2	170-369	1/2 x 2-3/4	172-007	3/4 x 2-1/2	170-374
5/16 x 3	170-295	1/2 x 3	170-168	3/4 x 2-1/2 (Grade 8)	175-055
3/8 x 3/4	170-439	1/2 x 3-1/2	170-167	3/4 x 3	170-014
3/8 x 3/4 (Stainless steel)	174-788	1/2 x 3-1/2 (Grade 8)	172-950	3/4 x 3-1/2	170-195
3/8 x 7/8	170-268	1/2 x 4	173-111	3/4 x 3-1/2 (Grade 8)	171-899
3/8 x 7/8 (soc. hd.capscrew)	172-044	1/2 x 4 (Full thread)	171-509	3/4 x 4-1/2	170-846
3/8 x 1	170-054	1/2 x 4-1/2 (Grade 8)	171-573	3/4 x 6	171-116
3/8 x 1-1/4	170-005	1/2 x 5	171-412	3/4 x 8	173-509
3/8 x 1-1/4 (Stainless steel)	174-917	1/2 x 6	173-506	7/8 x 2-1/4	172-892
3/8 x 1-1/2	170-368	1/2 x 6 (Grade 8)	174-944	7/8 x 3	172-002
3/8 x 2	170-245	1/2 x 6-1/2	173-711	7/8 x 3-1/2	173-020
3/8 x 2-1/4	170-320	1/2 x 7-1/2	175-107	7/8 x 4	173-299
3/8 x 2-1/2	170-257	1/2 x 8-1/2	170-504	7/8 x 4 UNF	171-092
3/8 x 2-1/2 (Full thread)	170-128	1/2 x 11	170-506	7/8 x 8 (grade8) UNF	173-715
3/8 x 3	170-380	5/8 x 1	171-087	1 x 3-1/2	173-021
3/8 x 3-1/2	170-292	5/8 x 1-1/4	171-366	1 x 8 (grade 8) UNF	173-713
3/8 x 4	170-877	5/8 x 1-1/2	170-153	1-1/4 x 4-1/2 (grade 8)	175-003

HARDWARE PART NUMBER LISTING CONTINUED:**TRUSS HEAD BOLTS**

#6-32 x 3/4	172-416
#6-32 x 1	173-079
#8-32 x 1-1/2	171-210
#10-32 x 3/4	171-604
#10-32 x 1	172-882
1/4 x 3/4	170-193
1/4 x 1	170-194
5/16 x 1	170-117

CARRIAGE BOLTS

1/4 x 2-1/2	171-394
1/4 x 3	170-509
5/16 x 2-1/2	171-395
3/8 x 3-1/2	171-283
3/8 x 4-1/2	170-191
3/8 x 5	170-495
3/8 x 6-1/2	171-174
1/2 x 1-1/2	174-045
1/2 x 1-1/2 (Grade 5)	174-918
1/2 x 6-1/2	171-098
1/2 x 9	171-255
5/8 x 2	175-110
5/8 x 2-1/2	174-790

PLOW BOLTS

5/8 x 2	174-767
---------------	---------

ZERKS

1/8 NPT	170-865
1/8 NPT-45 Deg	170-864
1/8 NPT-65 Deg	170-215
1/8 NPT-90 Deg	170-866
3/16 drive in	174-124
1/4-28	170-023
1/4-28 - 45 Deg	170-148
1/4-28 - 90 Deg	170-049
1/4 NPT	170-277
1/4 NPT - 45 Deg	174-130

**ROLLER CHAIN
CONNECTOR LINKS**

#50	170-088
#50-2R	170-094
#60	170-089
#60-2R	170-095
#60H	171-102
#80	170-090
#80H	170-821
#100	170-091
#100H	171-969
#120	170-092

#140	170-093
#140H	173-552
#160	170-888

OFFSET LINKS

#50	170-096
#50-2R	170-102
#60	170-097
#60-2R	170-103
#60H	171-103
#80	170-098
#80H	170-820
#100	170-099
#100H	172-145
#120	170-100
#140	170-101
#140H	173-553
#160	170-887

ROLLER LINKS

#50	171-415
#60	171-416
#80	171-417
#80H	170-795
#100	171-418
#100H	172-146
#120	171-419
#140	171-420
#160	171-421

COTTER PINS

1/16 x 1/2	170-992
3/32 x 3/4	170-364
1/8 x 1	170-045
1/8 x 1-1/2	170-382
5/32 x 1-1/2	170-236
5/32 x 3	170-135
3/16 x 1-1/4	170-991
3/16 x 2	170-115
1/4 x 1-1/2	170-521
1/4 x 2	170-056

SET SCREWS

5/16 x 5/16	170-248
5/16 x 1/2	170-254
3/8 x 1/4	170-856
3/8 x 3/8	170-151
1/2 x 5/8	170-249
1/2 x 1-1/4 (half dog point)	171-085

PART NUMBER INDEX

101-227	21	103-531	17	135-992	7
101-231	21	103-532	15	135-993	7
101-736	21	103-533	15	135-994	7
101-738	21	103-535	15	135-996	7
101-739	21	103-536	15	135-997	7
101-819	5	103-537	15	136-000	7
101-835	27	103-538	15	136-001	7
101-917	27	103-539	15	136-002	7
101-918	27	103-540	15	136-003	7
102-295	18	103-542	15	136-004	7
102-306	17	103-720	13	136-005	7
102-307	17	103-725	13	136-011	7
102-308	9	103-740	11	136-030	24
102-309	9	103-741	11	136-031	24
102-310	9	103-742	15	136-032	24
102-312	11,13	103-743	15	136-033	24
102-313	11,13	103-753	15	136-034	24
102-314	13	132-701	21	136-035	24
102-315	11,13	133-077	35	136-036	24
102-317	11,13	133-920	4	136-037	24
102-318	11,13	133-942	21	136-038	24
102-319	13	133-943	21	136-039	24
102-320	13	133-952	21	136-065	11
102-321	13	134-086	5	136-067	7
102-322	4	134-155	5	136-068	7
102-323	7	134-352	11,13,15	136-076	4
102-325	17	134-389	21	136-142	21
102-326	17	134-390	21	136-143	21
102-330	5	134-394	21	136-254	18
102-331	5	134-395	21	136-418	18
102-333	17	134-409	27	136-454	4
102-336	11	134-447	7	136-751	24
102-337	11	134-471	7	136-752	24
102-338	11	134-602	4	136-753	24
102-339	11	134-771	23	136-754	24
102-340	11	134-900	4	136-755	24
102-345	21	135-311	13	136-756	24
102-346	21	135-697	7	136-757	24
102-347	21	135-917	17	136-758	24
102-387	18	135-918	17	136-759	24
102-437	4	135-936	4	136-760	24
102-439	4	135-946	7	136-921	11,13,15
102-479	23	135-949	4	136-963	18
102-484	23	135-958	11,13	136-965	18
102-525	18	135-959	11,13	137-132	27
102-526	18	135-960	13	140-001	21
102-527	19	135-961	17	140-003	19
103-052	27	135-968	11,13,15	140-009	4
103-387	35	135-969	11,13	140-011	4
103-521	9,23	135-970	11,13	140-012	4
103-522	23	135-971	11,13,15	140-014	19
103-523	23	135-972	11,13	140-017	18
103-524	23	135-973	11,13	140-417	15
103-525	23	135-974	11,13	140-522	15
103-526	23	135-976	11,13	140-523	15
		135-985	7	140-524	15

PART NUMBER INDEX

140-527	15	170-893	35	171-949	35
140-529	24	170-920	17	171-960	27
140-530	24	170-947	19	172-005	5,19
140-531	24	171-030	18,19,21,23	172-024	9
140-532	24	171-045	5	172-041	35
140-533	15	171-136	21	172-110	8
140-534	15	171-151	21	172-128	27
140-535	4	171-158	27	172-130	27
140-538	15	171-178	21	172-143	27
140-777	11,13	171-186	21	172-165	27
140-779	11,13	171-259	21	172-166	27
140-782	11,13	171-260	21	172-288	4
140-804	11,13	171-265	21	172-289	7
140-805	11,13	171-330	21	172-292	35
140-848	17	171-346	19,21	172-312	17
140-853	15	171-380	27	172-313	17
140-854	15	171-428	21	172-350	27
140-855	15	171-462	21	172-354	27
140-857	15	171-542	28	172-386	27
140-858	15	171-543	29,31	172-442	23
170-008	7	171-544	28,29,30,31,32	172-447	30,32
170-028	4,28,31,32	171-550	28,29,30,31,32,35	172-496	30,32
170-053	4	171-576	21	172-500	27
170-056	21	171-599	35	172-751	5
170-069	4,29,30	171-607	7	172-786	35
170-110	21	171-609	35	172-800	27
170-118	21	171-610	17	172-801	27
170-122	21,23	171-611	17	172-802	27
170-125	17	171-612	17	172-803	27
170-142	7	171-613	17	172-804	27
170-149	7	171-614	17	172-820	35
170-220	28,29,30,31,32	171-615	17	172-822	9
170-235	18,19,21,23	171-643	7	172-823	9
170-244	9	171-666	21	172-845	28,29
170-262	21	171-668	21	172-847	28,29,31
170-302	21	171-695	7	172-864	5
170-366	35	171-712	35	172-883	35
170-415	27	171-723	23	172-884	7
170-445	7	171-748	35	172-907	30
170-468	18,19,23	171-782	21	172-924	28,31,32
170-471	18,19,23	171-799	28,29,30,31,32,35	172-925	29,30
170-478	19	171-814	17	172-986	4,29,30
170-490	35	171-820	35	172-987	4,28,31,32
170-509	17	171-883	21	172-989	28
170-518	5	171-911	35	172-990	29
170-776	28,29,30,31,32	171-913	35	172-993	30
170-800	5	171-914	35	172-994	30,32
170-812	35	171-915	35	172-998	4
170-813	35	171-919	4,7	172-999	17
170-815	35	171-920	11,13	173-001	17
170-845	5	171-932	21	173-002	17
170-849	35	171-935	9	173-003	17
170-859	21	171-936	27	173-004	17
170-865	4,9	171-938	21	173-005	17
170-867	35	171-947	35	173-006	17
		171-948	35	173-007	17

PART NUMBER INDEX

173-008	17	174-502	27
173-012	5	174-503	27
173-013	5	174-504	27
173-014	5	174-505	27
173-015	5	174-506	27
173-019	17	174-507	27
173-027	9	174-508	27
173-031	17	174-514	35
173-032	17	174-556	35
173-033	17	174-558	11,13,15
173-034	27	174-562	35
173-040	35	174-563	35
173-041	35	174-577	17
173-044	35	174-634	35
173-065	4	174-637	35
173-078	35	174-671	35
173-156	27	174-672	15
173-170	17	174-673	8
173-171	17	174-674	8
173-172	17	174-675	8
173-173	17	174-676	17
173-174	17	174-681	31
173-211	25	174-682	32
173-212	25	174-683	31
173-213	25	174-684	32
173-214	25	174-686	35
173-215	25	174-687	35
173-216	25	174-689	31
173-217	25	174-690	31
173-218	25	174-695	32
173-219	25	174-696	32
173-220	21	174-700	35
173-225	27	174-719	27
173-226	27	174-724	8
173-227	27	174-725	8
173-228	27	174-775	8
173-270	19	174-838	17
173-273	18,23	174-839	17
173-284	4	174-840	17
173-308	29	174-842	18
173-309	28	174-923	25
173-312	30	180-630	9
173-315	29		
173-316	28		
173-317	30		
173-318	28,29		
173-319	30		
173-320	28,29,31		
173-321	30,32		
173-426	31		
173-435	32		
173-447	35		
173-448	35		
174-501	27		