



# ***KNIGHT***

## ***TRAILER PARTS MANUAL***

### ***3095***

### ***Commercial SDL***

#### **Table of Contents**

Abbreviations .....	2
Using This Service Parts Listing .....	3
Front End and Drive Shaft Parts .....	4
Chains and Tighteners .....	5
Rear Drive Parts .....	6
Drive Shield and Grease Line Parts .....	8
Reel and Auger Parts - Dairy .....	10
Reel and Auger Parts - Feedlot .....	12
Undercarriage Parts .....	14
Door and Slide Tray Parts .....	16
Repair Liner Parts .....	17
Scale Parts .....	18
Scale Connector Repair Parts .....	20
Rotation Counter Kit .....	21
Hay Maxx Kit Parts .....	22
PTO Driveline - 1000 RPM - 21 Spline - 1-3/8" Yoke .....	23
PTO Driveline - 1000 RPM - 20 Spline - 1-3/4" Yoke .....	24
Decals .....	25
Paint List .....	25
Light Kit Parts .....	25
Hardware Part Number Listing .....	26
Part Number Index .....	28

Catalog Part Number 005942

Unit Serial Number \_\_\_\_\_

Operator Instruction Manual for this unit: 005798

**Abbreviations**

Assy .....	Assembly
A/R .....	As Required
B .....	Bolt
Brg .....	Bearing
BSN .....	Before Serial Number
Btm .....	Bottom
C-Bolt .....	Carriage Bolt
Cttr .....	Cotter
CV .....	Constant Velocity
Deg .....	Degree
Dia .....	Diameter
ea .....	Each
eq or Equiv .....	Equivalent
Fln .....	Flanged Lock Nut
Fw .....	Flat Washer
Ga .....	Gauge
Gr or Grd .....	Grade
Hd .....	Head
Hfw .....	Heavy Flat Washer
Hyd .....	Hydraulic
ID .....	Inside Diameter
Ill or Illus .....	Illustration
Ind .....	Indicator
Jn .....	Jam Nut
Kw .....	Keyway
LH .....	Left Hand
Ln .....	Lock Nut
Lw .....	Lock Washer
Mtg Hrd .....	Mounting Hardware
NC .....	National Coarse
NF .....	National Fine
NLA .....	No Longer Available
NPT .....	National Pipe Thread
OD .....	Outside Diameter
Pc(s) .....	Piece(s)
PD .....	Pitch Diameter
PTO .....	Power Takeoff (shaft)
Qty .....	Quantity
RH .....	Right Hand
SN .....	Serial Number
SHCS .....	Socket Head Cap Screw
Spk, or Spkt or Sprkt .....	Sprocket
Sq .....	Square
SS .....	Stainless Steel
SSB .....	Stainless Steel Bolt
St .....	Straight
Std .....	Standard
STS .....	Self Tapping Screw
UASN .....	Used After Serial Number
UBSN .....	Used Before Serial Number
W .....	With
W/O .....	With Out

## Using This Service Parts Listing

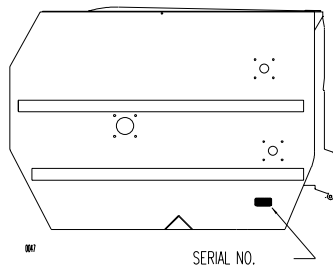
This listing uses a number indentation system to specify the parts of an assembly. Any number which is indented to the right, indicates that it is a component of the item to the upper left. Example:

<u>Part no</u>	<u>Qty</u>	<u>Description</u>
102-AAA	#	Assembly A
102-BBB	#	Sub-Assembly B
(Component of A)		
140-xxx	#	Sub-Component of B
140-xxx	#	Sub-Component of B
102-CCC	#	Sub-Assembly C
(Component of A)		
etc.		

Using this system, the subassemblies and their components are included if an **Assembly** is ordered. Similarly, the components of a subassemblies are included if a subassembly is ordered.

The quantity (Qty) associated with an assembly, represents the number of times an assembly could be shown in the drawing. The subassembly quantity however, is the number of times a subassembly is used to build one assembly. Similarly, the component quantity refers to the number of times a given component is found in one subassembly.

MODEL AND SERIAL NUMBER INFORMATION is located near the front left hand corner (Fig. A). The model number, serial number and part number should be known when asking service personnel for parts.



Serial Number Location  
Fig. A

The serial number may consist of a number, or a number with a letter prefix. When referring to serial number breaks in the text of this manual, a serial number with a prefix will have been manufactured after a serial number without a prefix (A001 made after 0123). Likewise, a higher prefix letter would indicate manufacture after a lower prefix letter (B001 made after A123). Therefore, if the text refers to units manufactured after serial number B123, this would include “B” series numbers greater than 123, and all numbers with a higher letter prefix.

If you cannot find the part you need, be as descriptive as possible when placing an order:

**Sprockets:** give the bore size, number of teeth, and size of keyway.

**Roller chain:** give the size of chain (stamped on the side of each link) and number of links.

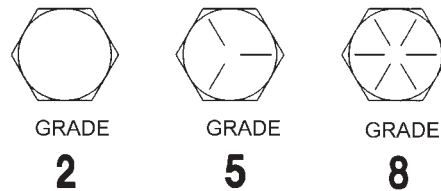
**Shafting:** give the diameter, length, and quantity and size of keyways.

Hardware is generally not included with parts. If you need any hardware, check the size, the length, and the grade (Fig. B), then check the hardware list in this manual for the part numbers.

**All hex head bolts are grade 5, and nuts are grade B unless otherwise stated.**

The hardware listing also includes listings for zerks, cotter pins, set screws, and roller chain links.

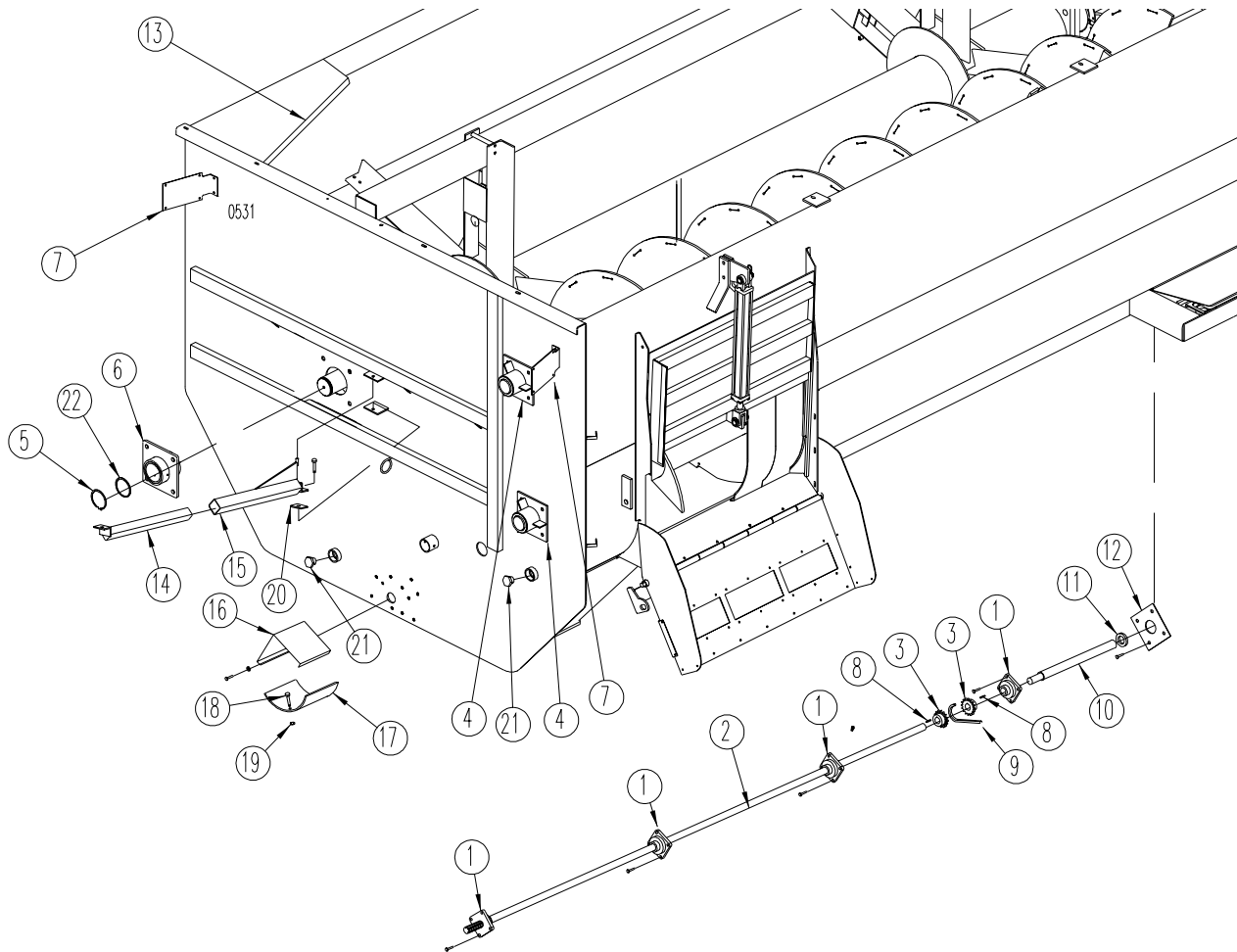
**The illustrations in this manual are meant to be used only as a guide for identifying parts and locating their relative positions.**



BOLT HEAD GRADE MARKING

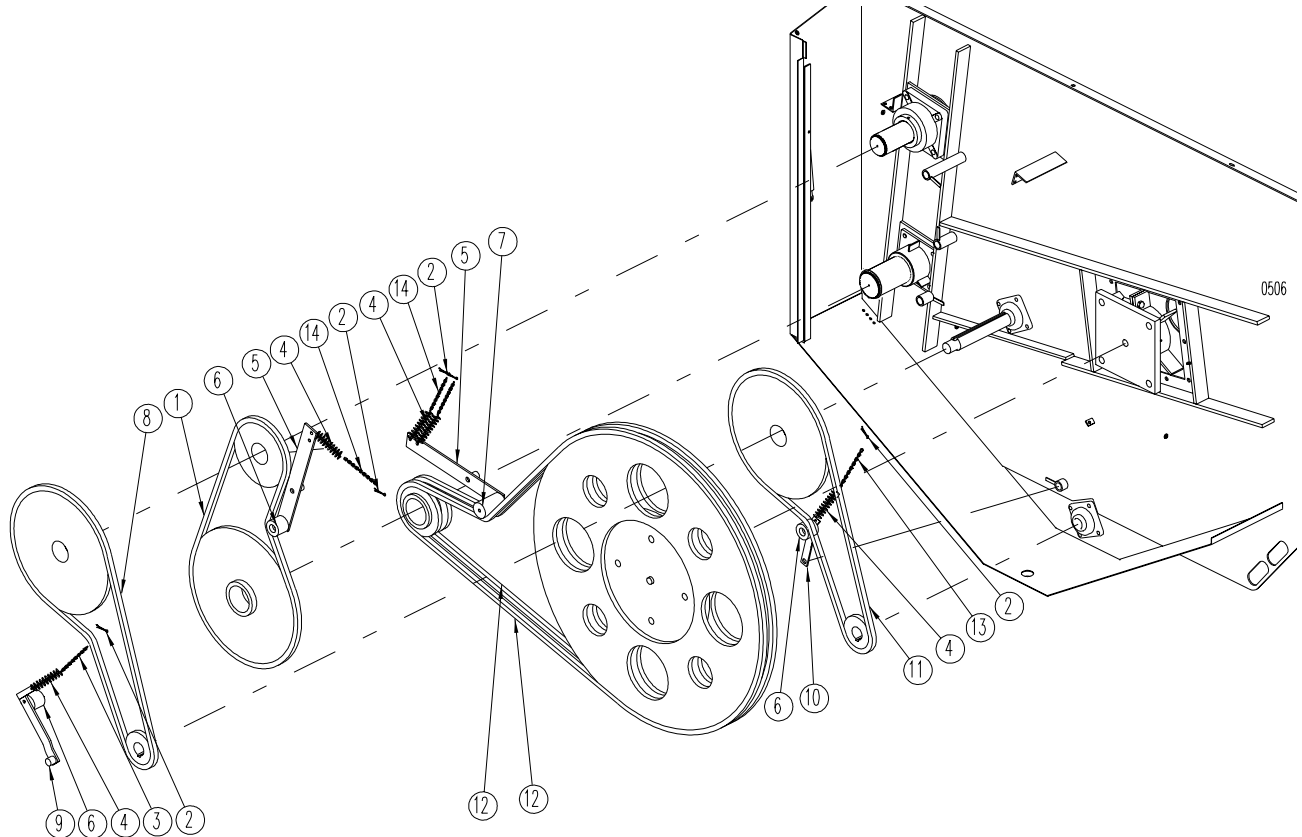
0072

**Front End and Drive Shaft Parts**



REF	PART NO	QTY	DESCRIPTION
1	172-288	5	Bearing; 1-1/2" Eccentric Lock; Mtg Hrd: 1/2" x 1-3/4" B, LW, Nut (4ea)
2	141-399	1	Input Shaft; 1-1/2" x 169 11/16"
3	134-602	2	Sprocket, 60-B-18, 1-1/2" Bore
4	103-874	2	Bearing, 3"; Mtg Hrd: 5/8" x 2" Bolt, Fw, Lw, Nut (4 ea)
5	171-989	1	Snap Ring, External, 4" (Tru-Arc 5100-400)
6	103-818	1	Reel Bearing Assembly; 4"; Mtg Hrd: 7/8" x 2-1/4" B, LW, Nut (4ea)
7	141-402	1	Indicator Mount, (can be mounted on either side of unit); Mtg Hrd: 5/16" x 1" B, FW, LW, Nut (2ea)
8	173-065	2	Key; SQ 3/8" x 1-1/2"
9	173-284	1	Chain, Roller 60-2-18 Pitch W/Connector link
10	140-009	1	Input Shaft; 2" x 55-1/4"
11	172-998	1	Lip Seal, (C/R19760)
12	135-936	1	Seal Retain Plate
13	141-364	1	Corner Cover; Mtg Hrd: 5/16" x 1" B, LW, Nut (5ea), FW (10ea)
14	102-439	1	Swing Arm Assembly, Inner
15	102-437	1	Swing Arm Assembly, Outer; Mtg Hrd: 1/2" x 1-1/2" Bolt, Ln (includes "T" Bolt)
16	136-076	1	Shield; PTO Cover; Mtg Hrd: 3/8" X 1" Bolt, Fw, Lw, N (3 ea) (inc. decals: 170-490 & 173-041)
17	133-920	1	PTO Driveline Shield (1/8" x 9" x 16") Mtg Hrd: 5/16" x 3/4" Bolt & FLN (4 ea)
18	172-987	3	Shear Bolt; 5/16" x 2" Grd 5
19	170-028	3	Flange Lock Nut; 5/16" Grd 5
20	136-454	1	Belt, Rubber 1/4" x 3-1/2" x 2"
21	174-795	2	Drain Plug, 2" PVC
22	136-322	A/R	Thrust Washer, 5-1/4"

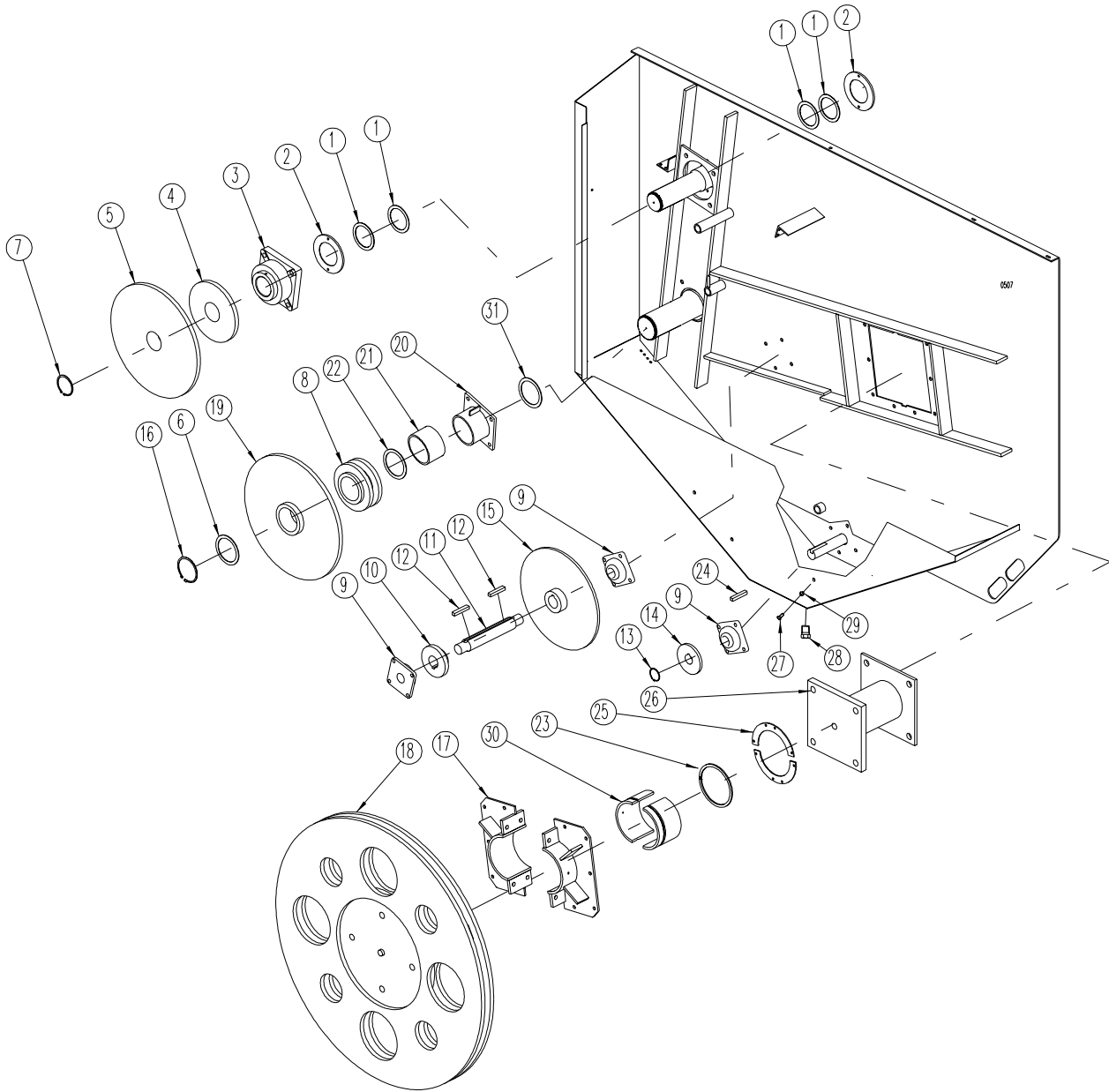
### Chains and Tighteners



REF	PART NO	QTY	DESCRIPTION
1	175-009	1	Roller Chain; 140-1-70 Pitch, w/Connector Link
2	170-800	4	Clinch Pin, 3/16" x 1-1/2"
3	170-845	1	Machine Chain; #4 x 17 Links
4	172-751	5	Spring, Extension 8-1/4" LG x 1-1/2" OD
5	103-931	2	Chain Tightener Arm
	102-331 <sup>A</sup>	2	Chain Tightener Arm
6	134-155	3	Tightener Block 3" OD x 2-1/2"; Mtg Hrd: 1/2" x 3" Bolt, Fw, Lw, & Nut
7	141-352	1	Tightener Block; 3" OD x 5", Mtg Hrd: 1/2" x 6-1/2" Bolt, Fw, Lw, Nut
8	175-008	1	Roller Chain; 120-1-82 Pitch, w/Connector Link
9	103-717	1	Chain Tightener Arm
10	101-819	1	Chain Tightener Arm
11	175-007	1	Roller Chain; 80-1-121 Pitch, w/Connector Link
12	175-010	2	Roller Chain; 140-1-132 Pitch, w/Connector Link
13	171-045	1	Machine Chain, #4 x 22 Links
14	170-518	3	Machine Chain, #4 x 30 Links

<sup>A</sup>: Use before Serial Number # 66

### Rear Drive Parts



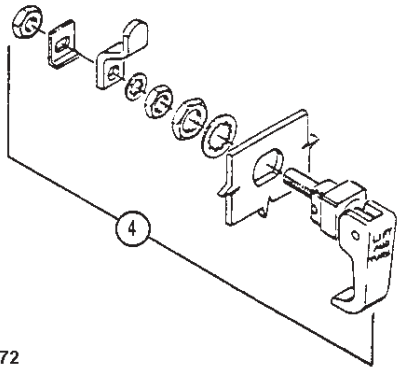
## Rear Drive Parts

REF	PART NO	QTY	DESCRIPTION
1	141-362	4	Seal Washer; Plastic, 4-1/2" ID x 5-3/4" OD
2	141-316	2	Seal Housing; 8" Dia, Mtg Hrd:5/16" x 1-1/2" B, LW, Nut (2ea)
3	171-990	1	Bearing; 4", Mtg Hrd:7/8" x 3-1/2" B, LW, Nut (4ea)
4	141-167	1	Sprocket; 140-B-21, 4" Splined Bore
5	141-166	1	Sprocket; 120-B-48, 4" Splined Bore
6	135-994	2	Thrust Shim; 6-1/4" Dia x 10 Ga. (as req'd)
7	171-989	1	Snap Ring; External, 4" (Tru-Arc 5100-400)
8	141-169	1	Sprocket; Double, 140-C-16, 5" Splined Bore
9	170-008	3	Bearing; 2"; Mtg Hrd: <b>Outer Counter Shaft:</b> 5/8" x 2" B, LW, Nut <b>Inner Counter Shaft:</b> 5/8" x 2" B, LW, Nut <b>Input Bearing:</b> 5/8" x 2-1/2" B, LW, Nut
10	130-175	1	Sprocket; 120-B-12, 2-1/2" Bore
11	141-279	1	Counter Shaft; 2-1/2" Dia. x 17"
12	171-769	2	Key; Sq, 5/8" x 4-3/8"
13	170-142	1	Snap Ring; External, 2" (Tru-Arc 5100-200)
14	136-178	1	Sprocket; 80-B-18, 2" Bore
15	132-766	1	Sprocket; 80-B-65, 2-1/2" Bore
16	172-289	1	Snap Ring; External, 5" (Tru-Arc 5100-500)
17	103-789	1	Reel Bearing; Mtg Hrd: 5/8" x 1-3/4" B, LW, Nut (10ea)
18	140-294	1	Sprocket; Double, 140-A-100; Mtg Hrd: 1-1/4" x 4" B, LW, Nut (4ea)
19	141-168	1	Sprocket; 140-C-45, 5" Splined Bore
20	104-028	1	Bearing Assembly; Mtg Hrd: 3/4" x 2-1/2" B, LW, Nut (4ea)
	102-323 <sup>A</sup>	1	Bearing Assembly; Mtg Hrd: 3/4" x 2-1/2" B, LW, Nut (4ea)
21	141-989	1	Bearing Sleeve; 5" ID
	135-946 <sup>A</sup>	1	Bearing Sleeve; 5" ID
22	141-329	1	Washer, 1/8" x 5" Inside Diameter x 6-1/4" Outside Diameter
23	140-906	1	Reel Drive Seal, 1/4" x 9"
24	170-835	1	Key; Sq, 1/2" x 1-1/2"
25	140-905	2	Seal Retainer
26	103-809	1	Reel Drive
27	170-149	1	Check Plug; 1/2" x 1" Bolt
28	174-795	1	Drain Plug
29	172-884	1	Washer, 1/2" Nylon
30	140-316	1	Reel Bushing
31	142-047 <sup>B</sup>	1	Washer, 3/8" x 5" Inside Diameter x 6-3/4" Outside Diameter

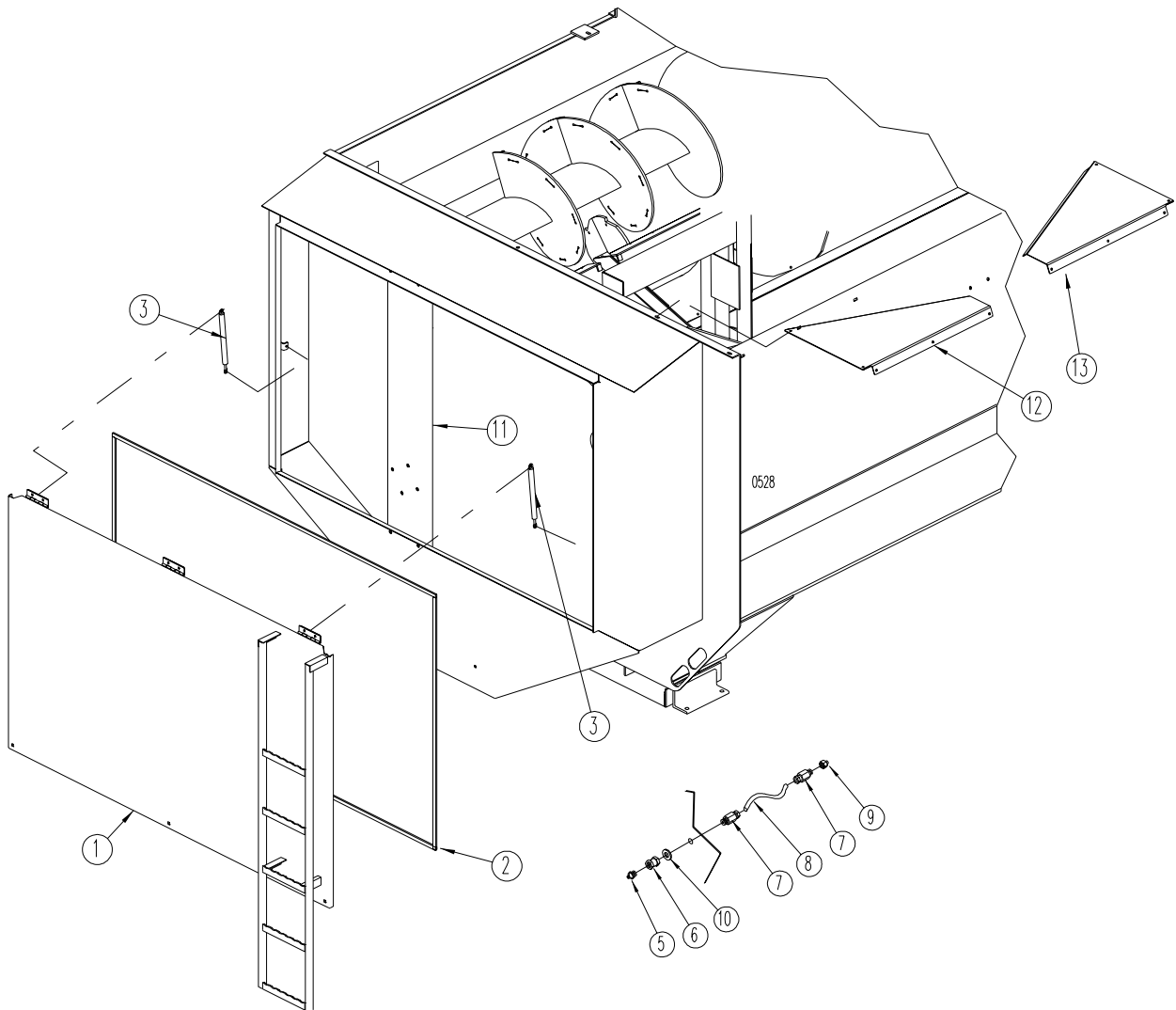
<sup>A</sup>: Use before Serial # 59

<sup>B</sup>: 142-047 replaces 141-329 for service parts in this location only. 141-329 (Item 22) is still used between sprocket (Item 8) and bearing (Item 20).

### Drive Shield and Grease Line Parts



0172



**Drive Shield and Grease Line Parts**

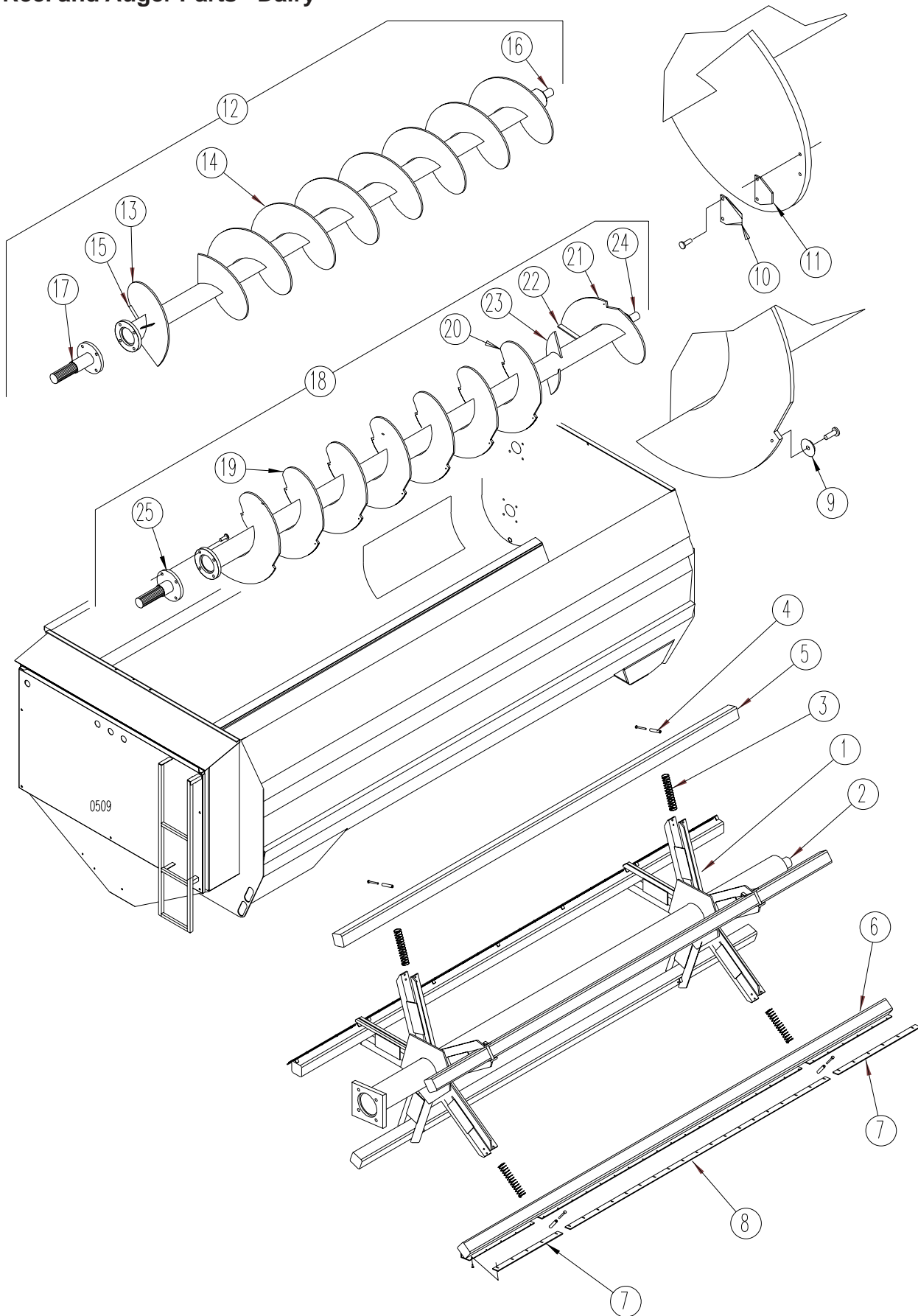
REF	PART NO	QTY	DESCRIPTION
1	103-819	1	<b>Safety Shield; Rear Drive,</b> Mtg Hrd: 5/16" x 1" Bolt, Flat Washer, Lock Washer, Nut (6ea)
2	171-935**	34'	Shield Gasket; 3/8" x 3/4" Closed Cell Foam
3	173-533	2	Gas Lift Support; Mtg Hrd: 3/8" x 1-1/2" Bolt, Lock Washer (2 ea), 3/8" Nut (4 ea)
4	173-027	3	Lift and Turn Latch
5	170-865	1*	Grease Zerk 1/8" NPT
6	172-024	1*	Coupling
7	172-822	2*	Compression Fitting
8	181-036**	**	Grease Line Copper Tubing
		49"	Required For Upper Auger Bearing
		19"	Required For Lower Auger Bearing
		48"	Required For Rear Reel Bearing
		61"	Required For Input Shaft Bearing
		37"	Required For Inner Counter Shaft Bearing
		74"	Required For Outer Counter Shaft Bearing
9	172-823***	1*	Adapter, Str, 1/4" x 1/8" NPTF F
10	170-244	1*	Flat Washer 3/8"
11	103-864	1	Rear Bearing Mount; Mtg Hrd: 5/8" x 1-1/2"B , LW, Nut(6ea)FW (10ea)
12	141-364	1	Corner Cover; (Front); Mtg Hrd: 5/16" x 1" B, LW, Nut (5ea)FW (10ea)
13	141-363	1	Corner Cover; (Rear); Mtg Hrd: 5/16" x 1" B, LW, Nut (5ea) FW (10ea)

\* Quantity required to complete 1 grease line assy

\*\* Sold by the linear foot.

\*\*\* Not required on all installations.

### Reel and Auger Parts - Dairy



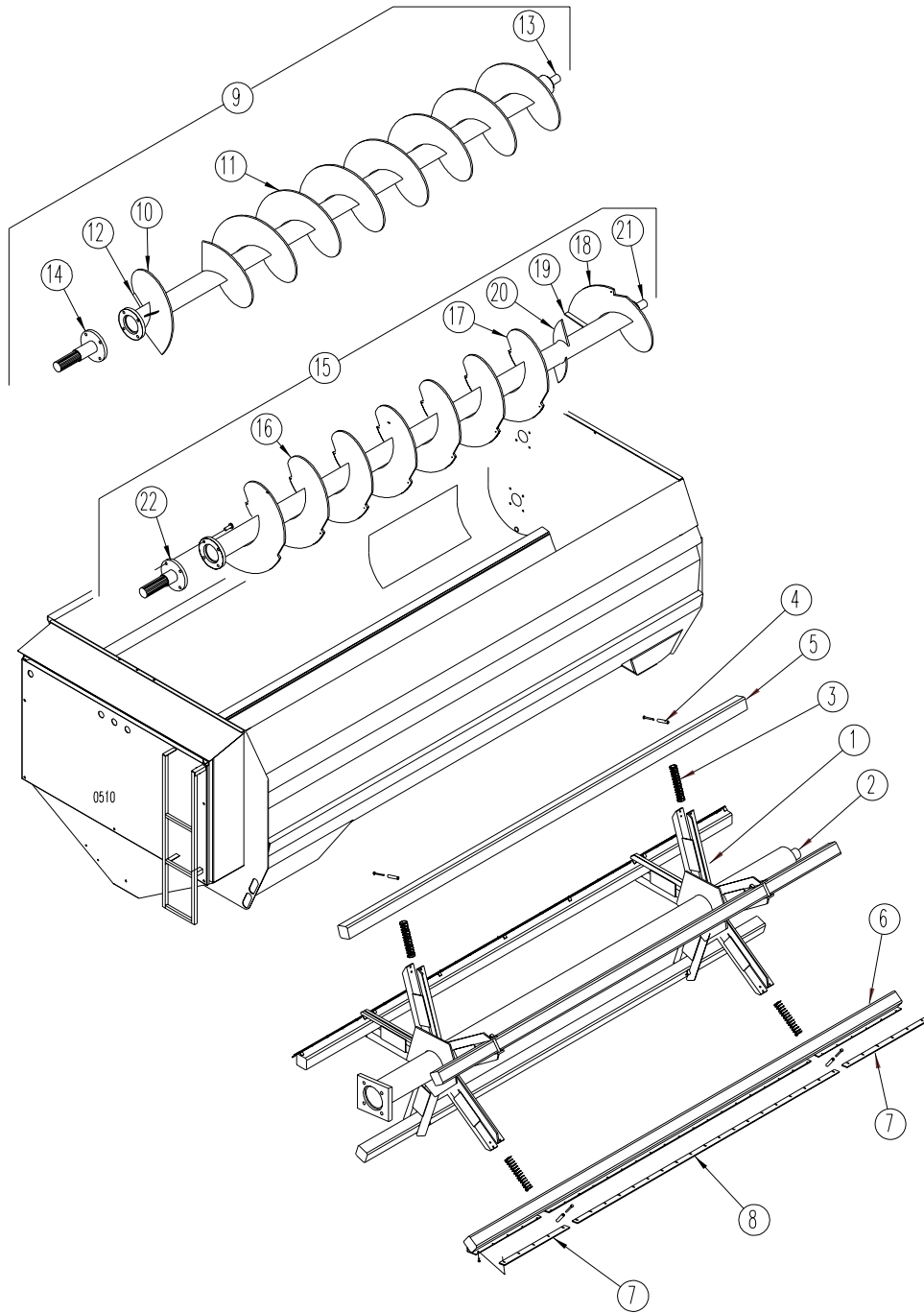
**Reel and Auger Parts - Dairy**

REF	PART NO	QTY	DESCRIPTION
1	103-549	1	Reel Weldment
2	103-551	1	Front Plug Assembly 4" (weld on)
3	174-672	10	Spring; Compression, 16" Long x 2-9/16" Out Side, 24 coil, .38 Wire
4	141-230 <sup>A</sup>	10	Retaining Sleeve; Mtg Hrd: 1/2" x 6-1/2" B, Lw, Nut (1ea)
5	103-823 <sup>B</sup>	3	Cross Tube; Mtg Hrd: 3/4" x 8" Bolt, Lock Nut
6	103-822 <sup>B</sup>	2	Cross Tube Wiper Assembly; Mtg Hrd: 3/4" x 8" Bolt, Lock Nut
7	135-958	4	Plastic Wiper Blade 2-1/2" x 37-3/4", Mtg Hrd: 1/4" x 1" B, Fw, Lw, & Nut (6ea)
8	141-227	4	Plastic Wiper Blade 2-1/2" x 63-3/4", Mtg Hrd: 1/4" x 1" B, Fw, Lw & Nut (19ea)
9	134-352	28	Lower Auger Knife; (Quantity May Vary), Mtg Hrd: 3/8" x 1-1/2" Bolt, Flat Washer & Nut (1 ea)
10	174-558	85	Knife, Sickle Section (Qty May Vary), Mtg Hrd: 5/16" x 1-1/4" B, Lw, Nut (2 ea)
11	136-921	85	Backer Plate
12	103-560	1	<b>Upper Auger Assembly</b>
13	140-326	1	Flighting, LH; 20"Pitch x 28" OD x 8.65" ID x 1/2" Thick
14	140-324	10	Flighting, RH; 20"Pitch x 28" OD x 8.65" ID x 1/2" Thick
15	140-344	6	Flighting Brace, 1/2" x 2-1/2" x 9"
16	103-553	1	Front Plug Assembly, (Weld on)
17	103-792	1	Rear Plug Assembly; Mtg Hrd: 1" x 4" B, LW, Nut, Grd 8 (4ea) (Bolt on)
18	103-561	1	<b>Lower Auger Assembly</b>
19	140-323	6	Flighting, Left Hand; 28"Pitch x 28" Outside Diameter x 8.65" ID x 5/8" Thick
20	140-340	1	Flighting, Left Hand; 28"Pitch x 28" Out side Diameter x 8.65" ID x 3/4" Thick
21	140-322	1	Flighting, Right Hand; 28"Pitch x 28" Outside Diameter x 8.65" ID x 3/4" Thick
22	140-344	8	Flighting Brace, 1/2" x 2-1/2" x 9"
23	141-293	2	Auger Paddle
24	103-553	1	Front Plug Assembly, (Weld on)
25	103-793	1	Rear Plug Assembly; Mtg Hrd: 1" x 4" B, LW, Nut, Grd 8 (4ea) (Bolt on)

<sup>A</sup>: Use before Serial # 73

<sup>B</sup>: Mtg. Hrd. before Serial # a0002 is 5/8" x 6 1/2" Bolt, LW, Nut.

### Reel and Auger Parts - Feedlot



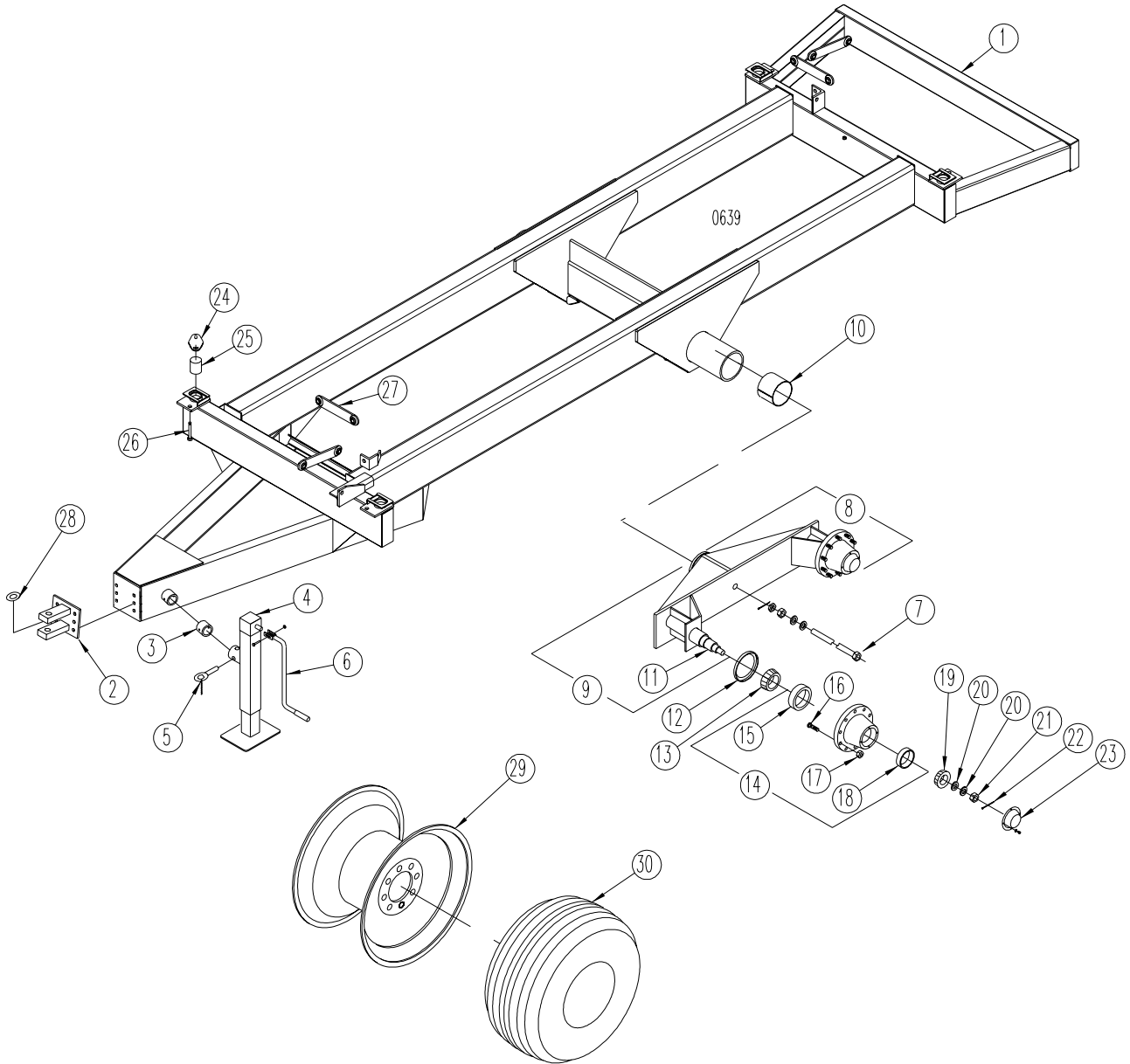
**Reel and Auger Parts - Feedlot**

REF	PART NO	QTY	DESCRIPTION
1	103-549	1	Reel Weldment
2	103-551	1	Front Plug Assembly 4" (weld on)
3	174-672	10	Spring; Compression, 16" Long x 2-9/16" Out Side, 24 coil, .38 Wire
4	141-230 <sup>A</sup>	10	Retaining Sleeve; Mtg Hrd: 1/2" x 6-1/2" B, Lw, Nut (1ea)
5	103-795 <sup>B</sup>	2	Cross Tube; Mtg Hrd: 3/4" x 8" Bolt, Lock Nut
6	103-822 <sup>B</sup>	3	Cross Tube Wiper Assembly; Mtg Hrd: 3/4" x 8" Bolt, Lock Nut
7	135-958	6	Plastic Wiper Blade 2-1/2" x 37-3/4", Mtg Hrd: 1/4" x 1" B, Fw, Lw, Nut (6ea)
8	141-227	6	Plastic Wiper Blade 2-1/2" x 63-3/4", Mtg Hrd: 1/4" x 1" B, Fw, Lw, Nut(19ea)
9	103-560	1	<b>Upper Auger Assembly</b>
10	140-326	1	Flighting, LH; 20"Pitch x 28" OD x 8.65" ID x 1/2" Thick
11	140-324	10	Flighting, RH; 20"Pitch x 28" OD x 8.65" ID x 1/2" Thick
12	140-344	6	Flighting Brace, 1/2" x 2-1/2" x 9"
13	103-553	1	Front Plug Assembly, (Weld on)
14	103-792	1	Rear Plug Assembly; Mtg Hrd: 1" x 4" B, LW, Nut, Grd 8 (4ea) (Bolt on)
15	103-561	1	<b>Lower Auger Assembly</b>
16	140-323	6	Flighting, Left Hand; 28"Pitch x 28" Outside Diameter x 8.65" ID x 5/8" Thick
17	140-340	1	Flighting, Left Hand; 28"Pitch x 28" Out side Diameter x 8.65" ID x 3/4" Thick
18	140-322	1	Flighting, Right Hand; 28"Pitch x 28" Outside Diameter x 8.65" ID x 3/4" Thick
19	140-344	8	Flighting Brace, 1/2" x 2-1/2" x 9"
20	141-293	2	Auger Paddle
21	103-553	1	Front Plug Assembly
22	103-793	1	Rear Plug Assembly; Mtg Hrd: 1" x 4" B, LW, Nut, Grd 8 (4ea) (Bolt on)

<sup>A</sup>: Use before Serial # 73

<sup>B</sup>: Mtg. Hrd. before Serial # a0002 is 5/8" x 6 1/2" Bolt, LW, Nut.

# Undercarriage Parts



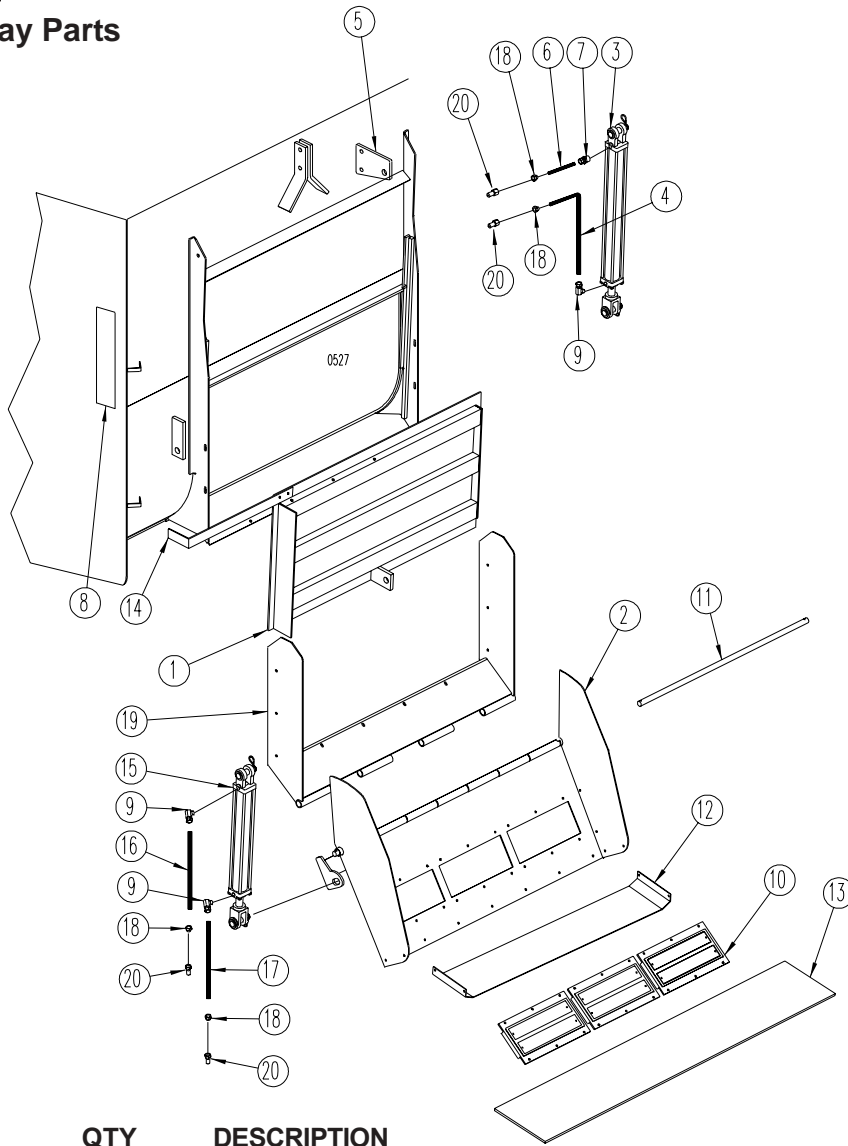
## Undercarriage Parts

REF	PART NO	QTY	DESCRIPTION
1	104-031	1	Undercarriage Weldment with Bogies
	103-852 <sup>B</sup>	1	Undercarriage Weldment with Bogies
2	102-307	1	Clevis Hitch Assembly; Mtg Hrd: 3/4" x 2" Bolt ( <i>grade 8</i> ), LN ( <i>grade 8</i> )
3	174-839	1	Jack Mount Tube
4	174-676	1	Jack, 10,000 lb
5	174-838	1	Pull Pin
6	174-840	1	Crank Assembly
7	103-879	1	Tie Rod Assembly Mtg Hrd: 3/4" Nut, Jam Nut, (170-236) Cotter Pin(1ea) Fw (2ea)
8	102-049	1	LH Bogie Assembly with hubs
	102-048	1	RH Bogie Assembly with hubs
9	102-065	1	LH Bogie Weldment without hubs
	102-066	1	RH Bogie Weldment without hubs
	170-865	1	Grease Zerk (not shown)
10	134-843	1	Bushing; Bogie Pivot
11	134-824	2	Spindle; 3"
12	172-362	2	Grease Seal C/R33772
13	172-360	2	Inside Bearing Cone Timken #33275 or Equiv.
14	172-396	2	10- Bolt Hub
15	172-361	1	Inside Bearing Race Timken #33462 or Equiv.
16	174-784	10	Wheel Stud; 3/4" NF, 3/4" diameter shank
	170-919 <sup>A</sup>	10	Wheel Stud; 3/4" NF 1" diameter shank
17	170-920	10	Wheel Nut; 3/4" NF
18	170-922	1	Outside Bearing Race *Timken 453A or Equiv.
19	170-921	2	Outside Bearing Cone *Timken 460 or Equiv.
20	170-928	4	Spindle Washer
21	170-927	2	Castle Nut; 1 1/4" UNF
22	170-056	2	Cotter Pin; 1/4" x 2"
23	170-926	2	Dust Cap
24	102-325	4	Load Cell Mount; Mtg Hrd: 1/2" x 1-1/2" Bolt, Lw, Nut (2ea) Fw (4 ea)
25	135-961	4	Dummy Load Cell (For Units Without Scales)
26	175-004	4	Retaining Bolt; 3/4" x 7-1/2"; Fw (2ea), Lnut(1 ea)
27	103-711	4	Check Arm; Mtg Hrd: running gear: Bolt; 7/8" x 3 1/2" B, Ln ( <i>grade 5</i> ), Mixer: 7/8" x 3-1/2" B, Ln (2ea)
28	140-848	1	Clevis Thrust Washer (Nylon)
29	172-312	4	Wheel; 13-1/2" x 22-1/2" 10 Hole ( <b>optional</b> )
30	172-313	4	Tire, 65R x 22.5" Radial (Implement tread)( <b>optional</b> )
	175-269	4	Tire, 425-65R 22.5 Rib (Highway tread) ( <b>optional</b> )
	174-577	4	Inner Tube; 18" x 22-1/2" <i>not shown</i> ( <b>optional</b> )

<sup>A</sup>: Note shank diameter when ordering studs.

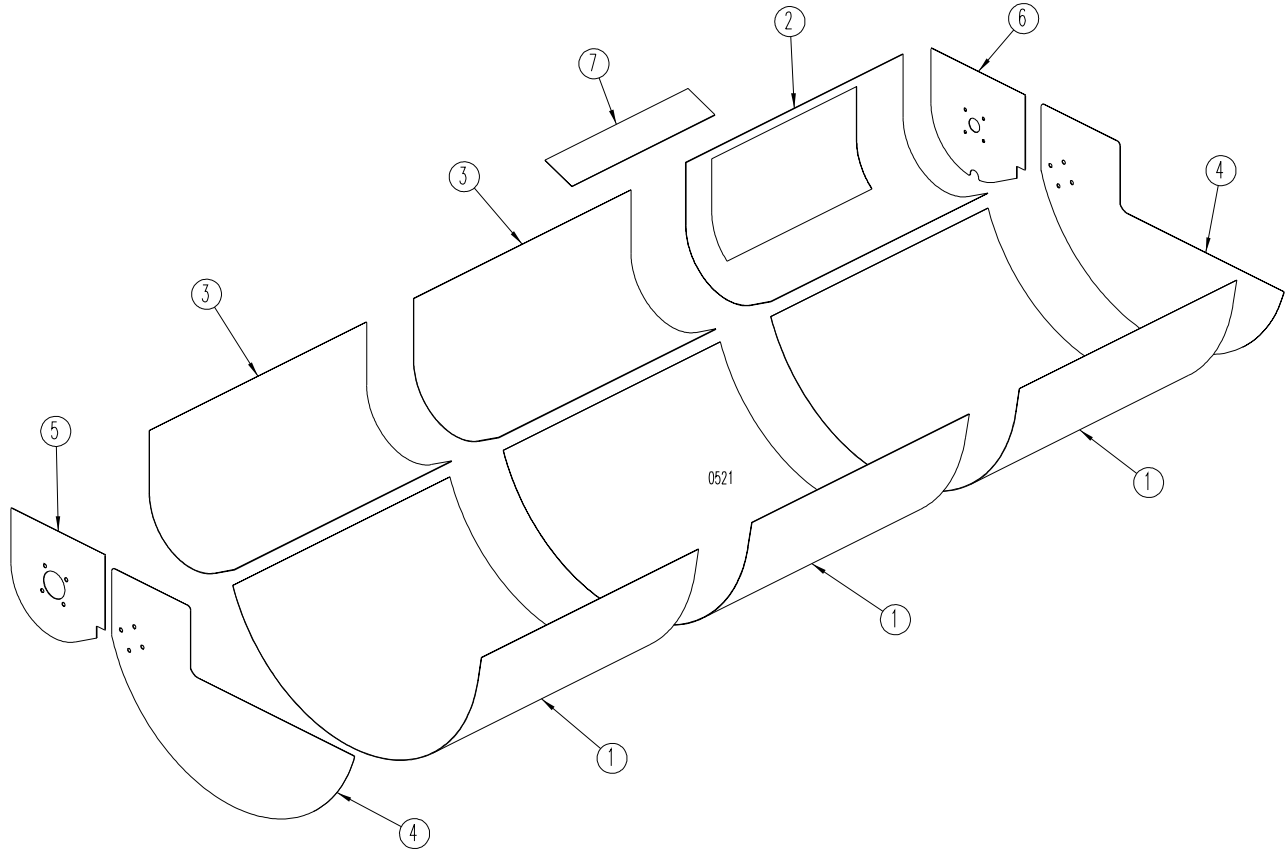
<sup>B</sup>: Undercarriage used before Serial # a0005, replace by 104-031.

**Door and Slide Tray Parts**



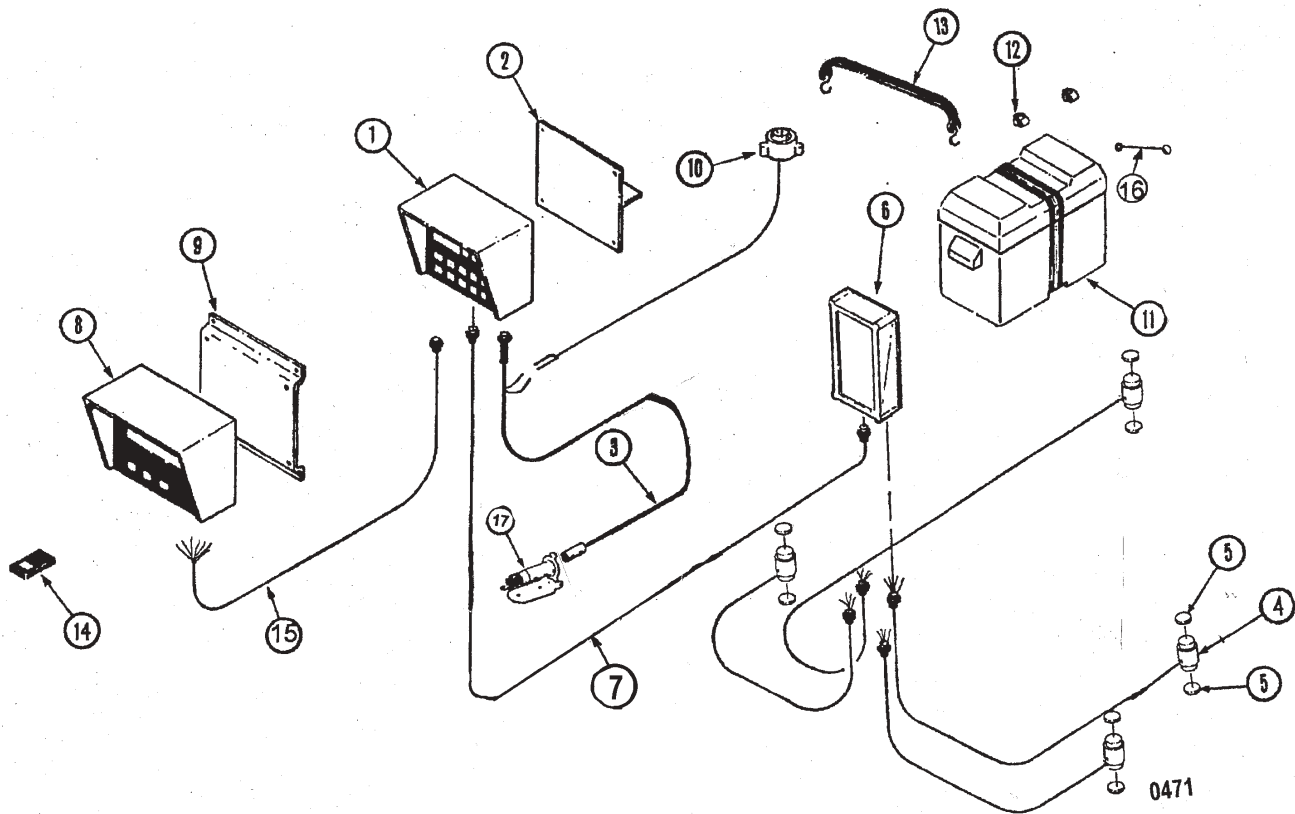
REF	PART NO	QTY	DESCRIPTION
1	103-562	1	Discharge Door
2	103-826	1	Slide Tray
3	174-972	1	Cylinder; 2" Diameter x 24" Long
4	173-496	1	Hose; 1/4" x 270"
5	140-310	1	Cylinder Lug; Mtg Hrd: 1/2" x 2-1/2" B, LN (2ea)
6	172-793	1	Hose; 1/4" x 252"
7	170-233	1	Straight Thread Adapter; 3/8" NPTF M x 3/8" NPTF F SW
8	174-808	1	Decal, Door Gauge
9	171-030	3	Swivel Connector; 90° x 3/8"
10	171-937	3	Magnet Plate; Mtg Hrd: 1/4" x 3/4" PHB, FW, LW, Nut (18ea)
11	141-278	1	Door Pivot Rod
12	140-920	1	Magnet Guard; Mtg Hrd: 1/4" x 3/4" PHB, LW, Nut (4ea)
13	181-040	67 1/4"	Belt Extension (Optional); Mtg Hrd: 1/4" x 1" PHB, FW, Nut (11ea)
14	141-572	1	Door Indicator, Mtg Hrd: 5/16" x 1" B, LW, Nut (2ea)
15	173-270	1	Cylinder; 2" Diameter x 8" Long
16	170-471	1	Hose; 1/4" x 170"
17	170-468	1	Hose; 1/4" x 162"
18	170-235	4	Adapter, Str, 1/2" NPTF M x 3/8" NPTF F
19	103-825	1	Door Frame Extension; Mtg Hrd: 5/16" x 1" B, FW, LW, Nut (6ea), 5/16" x 1" PHB, FW, LW, Nut (4ea)
20	175-536	4	Pioneer Quick Coupler

**Repair Liner Parts**



REF	PART NUMBER		QTY	DESCRIPTION
	Stainless Steel	Hot Rolled Steel		
1	141-391	141-880	3	Reel Liner
2	141-392	141-881	1	Door Hopper Liner
3	141-393	141-882	2	Auger Hopper Liner
4	141-394	141-883	2	Reel End Liner
5	141-395	141-884	1	Auger End Liner - (Rear)
6	141-396	141-885	1	Auger End Liner - (Front)
7	141-397	141-886	1	Door Opening Liner- Spill Tray Liner

**Scale Parts**



REF	PART NO	QTY	DESCRIPTION
1	172-128	1	Digi-Star Model EZ-II 2000 Basic Indicator, 1.0" Display
	172-800	1	Digi-Star Model EZ-II 2000V Indicator, 1.7" Display
	172-130	1	Digi-Star Model EZ-II 3200 Indicator, 1" Display
	172-500	1	Digi-Star Model EZ-II 3200V Indicator, 1.7" Display
	174-501	1	Digi-Star Model EZ-II 3200 Indicator (with serial port), 1" Display
	174-502	1	Digi-Star Model EZ-II 3200 Indicator (with serial port), 1.7" Display
	173-225	1	Weigh-Tronix Model 615 Basic Indicator, 1" Display
	173-226	1	Weigh-Tronix Model 615XL Basic Indicator, 2" Display
	173-227	1	Weigh-Tronix Model 715 Indicator, 1" Display
	174-503	1	Weigh-Tronix Model 715 Indicator (with port), 1" Display
	173-228	1	Weigh-Tronix Model 1015 Indicator, 1" Display
	174-504	1	Weigh-Tronix Model 1015 Indicator (with port), 1" Display
	175-046	1	Weigh-Tronix Model 2015 Indicator (with port), 1" Display
			Mtg Hrd for all indicators: 1/4" x 3/4" Bolt, Fw, Lw & Nut (2 ea)
2	101-835	1	Indicator Mount; Mtg Hrd: Spring (170-238) 3/8" x 2" Bolt, Fw & Ln
3	172-183	1	Power Cord Assy
4	173-034*	4	Load Cell (Digi-Star) <u>Note: State manufacturer of your weigh bar when ordering, may have a different manufacturer for the indicator.</u>
	174-508*	4	Load Cell (Weigh-Tronix ) <u>Note: State manufacturer of your weigh bar when ordering, may have a different manufacturer for the indicator.</u>

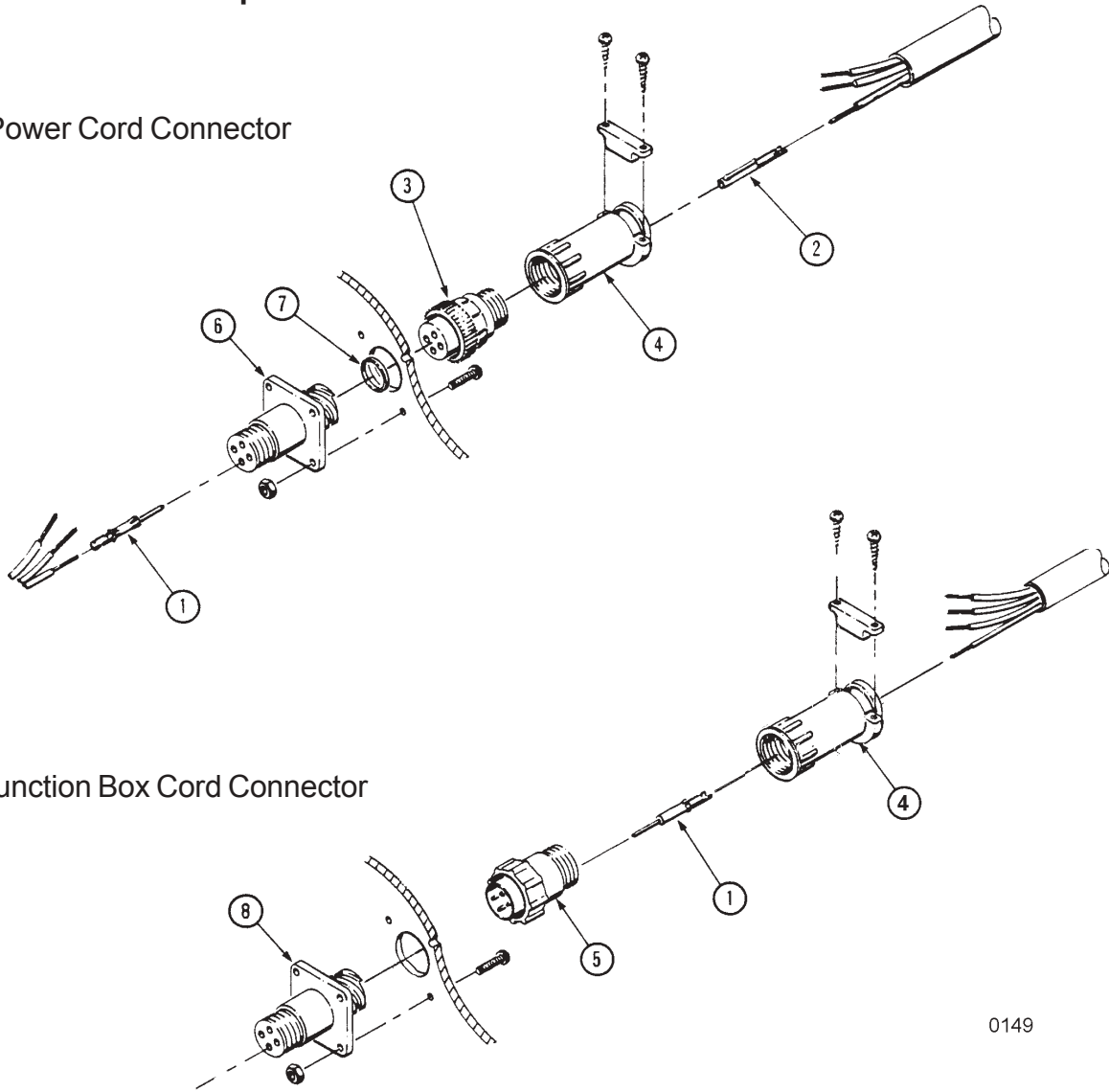
**Scale Parts**

REF	PART NUMBER	QTY	DESCRIPTION
5	137-132	8	Shock Pad (2 required for each Load Cell)
6	103-052	1	Junction Box w/15' Cable; #10 x 1" SMS (2 ea)
7	173-156	1	15' Replacement Junction Box Cable
	172-165	1	30' Junction Box Extension Cable (not shown)
	172-166	1	10' Junction Box Extension Cable (not shown)
<b>Optional Items:</b>			
8	172-803	1	Digi-Star EZ-II RD2000 Remote, 1" Display w/ 25' Cord
	175-047	1	Digi-Star EZ-II RD2000 Wireless Remote, w/25' Cord
	172-804	1	Digi-Star EZ-II RD2000 Remote, 1" Display w/ Transmitter & 25' Cord
	172-801	1	Digi-Star EZ-II RD2000V Remote, 1.7" Display w/ 25' Cord
	172-802	1	Digi-Star EZ-II RD2000V T/R Remote, 1.7" Display w/ Transmitter & 25' Cord
	174-505	1	Weigh-Tronix 712 Remote, 1" Display w/ 30' Cord
	174-506	1	Weigh-Tronix 712XL Remote, 2" Display w/ 30' Cord
	174-507	1	Weigh-Tronix 1012 Remote, 1" Display w/ 30' Cord
	175-074	1	Weigh-Tronix 1012XL Remote, 2" Display w/ 30' Cord
	175-046	1	Weigh-Tronix 1012M Mirror Mount Remote Display (includes mounting bracket & hardware to mount on truck mirror)
	175-051	1	Digi-Star EZ-II RD1000 Remote, Mirror Mount Display
	175-052	1	Digi-Star Horizontal Mirror Mount
	175-053	1	Digi-Star Mounting Brackets
9	134-409	1	Remote Indicator Mount; Mtg Hrd: 5/16" x 3/4" B, Lw, Nut (2 ea), 1/4" x 3/4" Bolt, Fw, Lw, Nut (2ea)
10	101-917	1	Digi-Star Alarm Horn Assembly Mtg Hrd: #6 x 3/4" B, Lw, Nut (2 ea)
	101-918	1	Weigh-Tronix Alarm Horn Assembly Mtg Hrd: #6 x 3/4" B, Lw, Nut (2 ea)
11	171-158	1	Battery Box
12	171-380	2	Battery Terminals
13	171-936	1	Battery Hold-Down Strap
14	172-143	1	Digi-Star Hand Held Transmitter ( <i>Installed Receiver is Required</i> )
	175-048	1	Digi-Star EZ-II RF900 Transceiver w/Magnet Mount & Cable
	172-350	1	Weigh-Tronix Hand Held Transmitter ( <i>Installed Receiver is Required</i> )
15	174-719	1	EZ-R Remote Indicator Replacement Cord
16	132-988	1	16 Ga. Ground
17	170-415	1	Tractor Plug
<b>Service Tools:</b>			
	172-386		Precision Calibrator for Scale Indicators
	171-960		Cord Splice Kit

\* All (4) load cells must be the same type to properly function and will work with either the Digi-Star or Weigh-Tronix indicator.

**Scale Connector Repair Parts**

Power Cord Connector

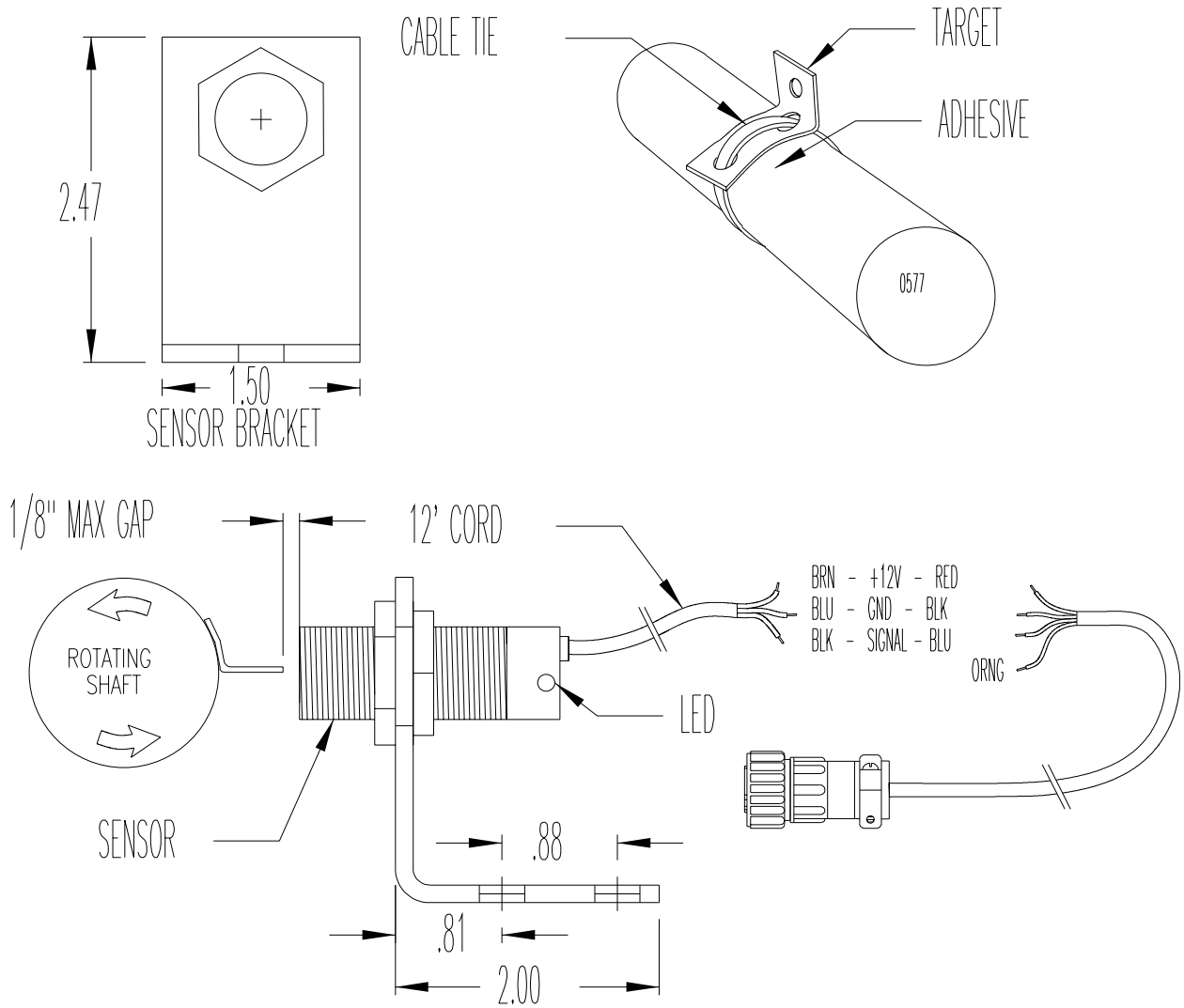


0149

REF	PART NO	QTY	DESCRIPTION
1	173-211	4	Contact Pin
2	173-212	4	Contact Socket
	173-216	1	Pin Extraction Tool <i>(not shown)</i>
3	173-213	1	Power Cord Connector
	174-923	1	Nut, Power Cord
4	173-214	1	Power Cord Strain Relief
5	173-215	1	Junction Box Cord Connector
	174-923	1	Nut, Power Cord
6	173-217	1	Power Connector Chassis
7	173-218	1	Seal for Power Connector Chassis
8	173-219	1	Load Cell Connector Chassis

# Rotation Counter Kit

(Part #: 175-217)

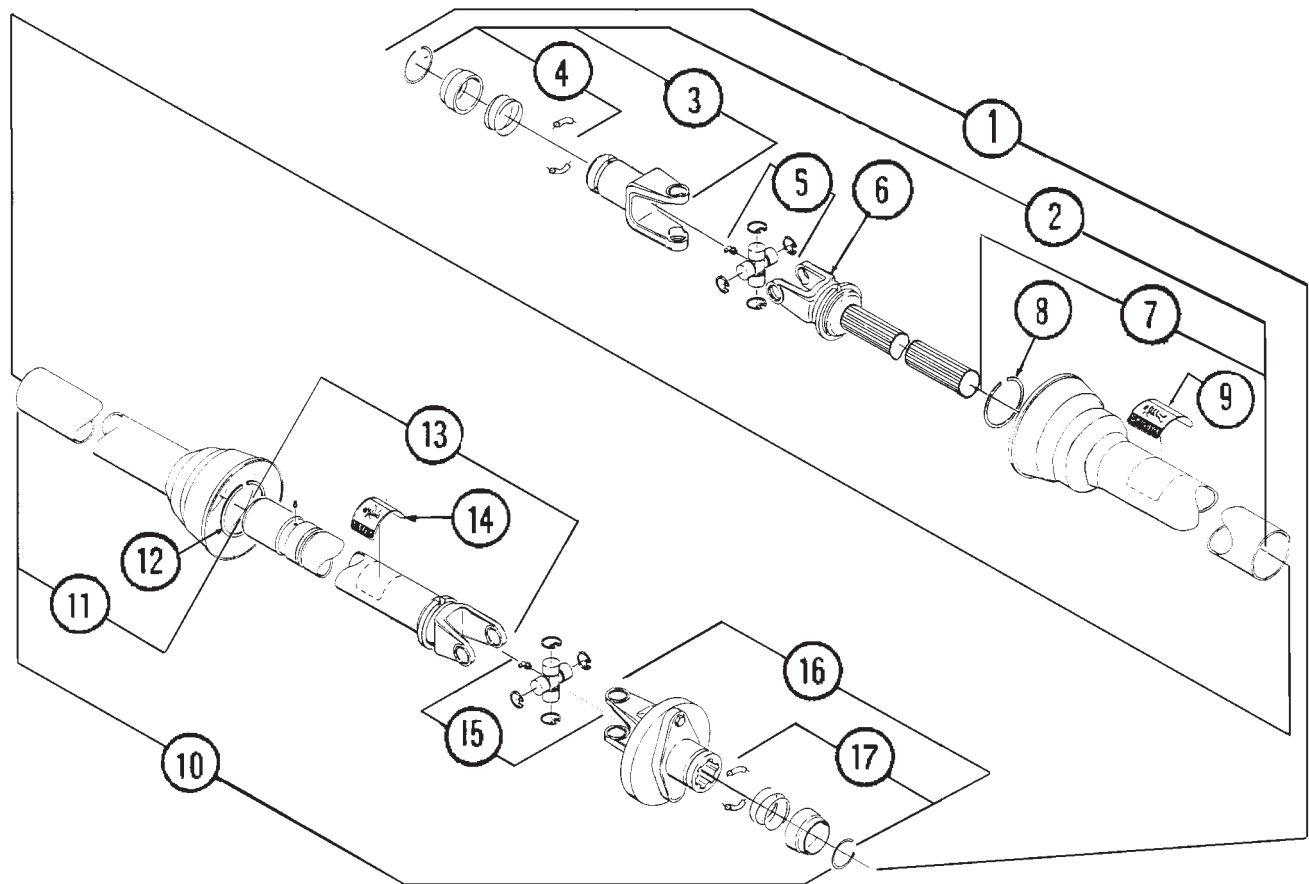


### INSTALLATION

1. APPLY RTV, CAULKING OR SUITABLE ADHESIVE ON SHAFT UNDER TARGET.
2. ATTACH TARGET SECURELY TO SHAFT USING CABLE TIE.
3. MOUNT SENSOR SO IT IS ABOUT 1/8 INCH (3MM) FROM TARGET.
4. CONNECT BROWN WIRE ON SENSOR TO +12V (RED WIRE ON POWER CABLE).
5. CONNECT BLUE WIRE ON SENSOR TO GROUND (BLACK WIRE ON POWER CABLE).
6. CONNECT BLACK WIRE ON SENSOR TO SIGNAL (BLUE WIRE ON POWER CABLE).
7. WITH POWER APPLIED, LED ON SENSOR WILL TURN ON WHEN IT SENSES METAL.
8. IF LED IS CONSTANTLY "ON" MOVE SENSOR AWAY FROM SHAFT.

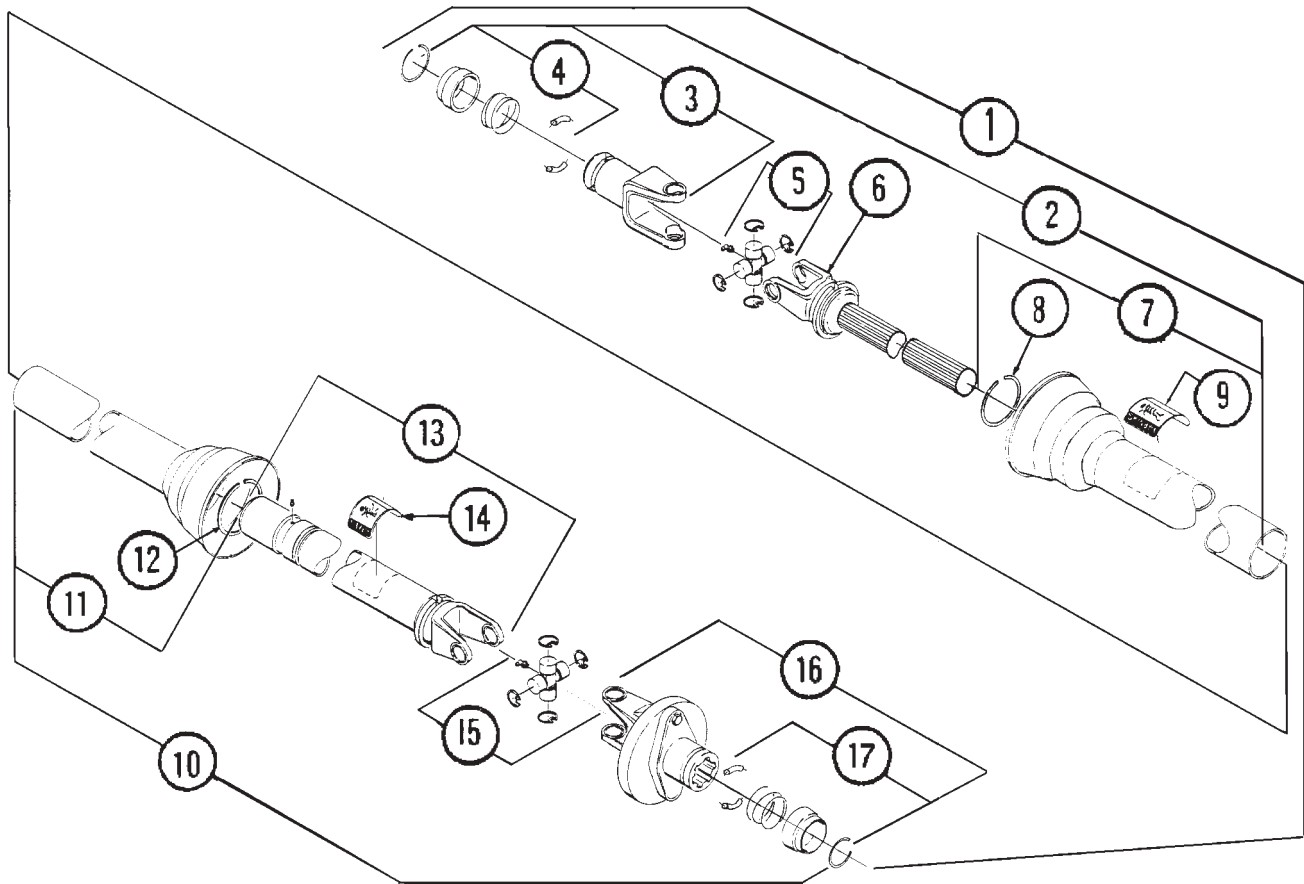


## PTO Driveline - 1000 RPM - 21 Spline - 1-3/8" Yoke



REF	PART NO	QTY	DESCRIPTION
1	174-681	1	Driveline Complete
2	174-689	1	Joint and Shaft Half with Guard
3	171-543	1	Yoke Assembly
4	171-544	1	Safety Slide Lock Repair Kit
5	170-776	1	Cross and Bearing Kit
6	174-683	1	Yoke and Shaft
7	173-320	1	Outer Guard
8	170-220	1	Nylon Repair Kit
9	171-550	1	Safety Decal
10	174-690	1	Joint and Tube Half with Guard
11	172-847	1	Inner Guard
12	170-220	1	Nylon Repair Kit
13	173-426	1	Yoke Tube and Slip Sleeve
14	171-799	1	Safety Decal
15	170-776	1	Cross and Bearing Kit
16	172-924	1	Ball Shear Clutch
	172-987	1	Shear Bolt; 5/16" x 2" (grade5)
	170-028	1	Lock Nut; 5/16" (grade 5)
17	171-544	1	Safety Slide Lock Repair Kit

**PTO Driveline - 1000 RPM - 20 Spline - 1-3/4" Yoke**



REF	PART NUMBER	QTY	DESCRIPTION
1	174-682	1	Driveline Complete
2	174-695	1	Joint and Shaft Half with Guard
3	172-447	1	Yoke Assembly
4	172-496	1	Safety Slide Lock Repair Kit
5	170-776	1	Cross and Bearing Kit
6	174-684	1	Yoke and Shaft
7	173-321	1	Outer Guard
8	170-220	1	Nylon Repair Kit
9	171-550	1	Safety Decal
10	174-696	1	Joint and Tube Half with Guard
11	172-994	1	Inner Guard
12	170-220	1	Nylon Repair Kit
13	173-435	1	Yoke Tube and Slip Sleeve
14	171-799	1	Safety Decal
15	170-776	1	Cross and Bearing Kit
16	172-924	1	Ball Shear Clutch
	172-987	1	Shear Bolt; 5/16"-18 x 2.00"LG ( <i>grade5</i> )
	170-028	1	Lock Nut; 5/16"-18 ( <i>grade 5</i> )
17	171-544	1	Safety Slide Lock Repair Kit

## Decals

The following decals are listed below for your convenience.  
Use the operator's manual for decal location, part number and ordering.

### Unit Decals:

PART NO	QTY	DESCRIPTION
175-011	1	Complete Decal Set for 3095 CTR
170-490	1	Reduce engine RPM...
170-849	3	WARNING - Stay Clear Of . . .
170-893	1	SMV Symbol
171-712	1	NOTICE - Retighten Set . . .
171-820	2	DANGER - Rotating Auger . . .
171-911	1	NOTICE - Operating Precautions
171-913	1	WARNING - Do Not Operate . . .
171-914	2	WARNING - Stay Clear of Chute . . .
171-915	1	DANGER - Shield Missing . . .
171-947	2	DANGER - Do Not Hand Load . . .
171-948	1	BEWARE - If Bucket Loading . . .
171-949	1	"U.S. Patent No. . . ."
172-292	1	Mixer Full Line
172-786	1	DANGER - Rotating . . .
172-820	3	WARNING - Lifting . . .
172-883	1	Oil Level Plug
173-041	1	Shear Bolt Information. . .
173-044	1	Made in Wisconsin. . .
173-448	26 ft	Stripe, Black
174-514	4	"KUHNNIGHT"
174-686	3	Decal; Red Reflector
174-687	5	Decal; Amber Reflector
174-801	2	"Commercial SDL"
174-808	1	Door Gauge
174-919	1	Serial No., 3095
174-943	2	Model No., 3095
174-803	1	Logo, "Feedlot" (For units with "Feedlot" option)
174-802	1	Logo "Dairy Series" (For units with "Dairy Series" option)

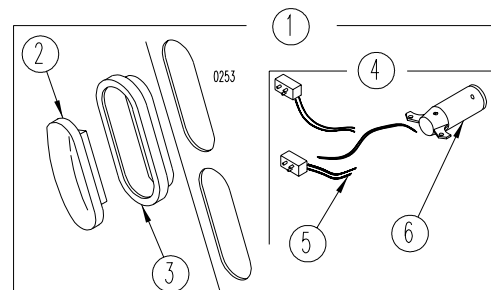
## Paint List

303-163 Black Aerosol Can  
180-281 Black Quart Can  
173-945 Black Gallon Can

173-731 Grey Aerosol Can  
173-281 Grey Quart Can  
173-282 Grey Gallon Can

## Light Kit Parts

1	174-675	1	Light Kit
2	174-673	2	Light, Amber
2	174-674	2	Light, Red
3	174-725	4	Grommet
4	174-775	1	Wire Harness
5	174-724	4	Light Connector (pigtail only)
6	172-110	1	7 Pin Connector (SAE J560B)



**Hardware Part Number Listing**

All fasteners are NC thread, Grade 5 unless otherwise specified.

**HEX HEAD BOLTS**

Size	Part No		
1/4 x 1/2	173-279	1/2 x 3/4	171-252
1/4 x 3/4	170-803	1/2 x 1	170-149
1/4 x 7/8	171-094	1/2 x 1-1/4	170-373
1/4 x 1	170-310	1/2 x 1-1/2	170-002
1/4 x 1-1/2	170-068	1/2 x 1-1/2 (Grade 8)	172-951
1/4 x 2	172-986	1/2 x 1-3/4	171-774
1/4 x 2 (Grade 8)	175-073	1/2 x 2	171-802
1/4 x 2-3/4	171-203	1/2 x 2-1/4	172-387
1/4 x 3	171-403	1/2 x 2-1/2	170-885
1/4 x 3-1/2	173-640	1/2 x 2-1/2 (Full thread)	171-099
1/4 x 4	173-505	1/2 x 2-3/4	172-007
		1/2 x 3	170-168
5/16 x 5/8	170-532	1/2 x 3-1/2	170-167
5/16 x 3/4	170-262	1/2 x 3-1/2 (Grade 8)	172-950
5/16 x 3/4 (Stainless steel)	174-787	1/2 x 4	173-111
5/16 x 7/8	170-256	1/2 x 4 (Full thread)	171-509
5/16 x 1	170-027	1/2 x 5	171-412
5/16 x 1-1/4 (Full thread)	170-188	1/2 x 6	173-506
5/16 x 1-1/2	170-372	1/2 x 6 (Grade 8)	174-944
5/16 x 1-3/4	170-263	1/2 x 6-1/2	173-711
5/16 x 2	172-987	1/2 x 7	174-328
5/16 x 2-1/2	170-369	1/2 x 7-1/2	175-107
5/16 x 3	170-295	1/2 x 8-1/2	170-504
5/16 x 3-1/4	171-639	1/2 x 11	170-506
5/16 x 3-1/2	173-748	9/16 x 1	173-699
5/16 x 4	170-293	9/16 x 1-1/4	173-700
5/16 x 4-1/2	170-294	9/16 x 1-1/2	173-701
5/16 x 5 (Grade 8)	172-983	9/16 x 2	172-219
5/16 x 5-1/2 (Grade 8)	172-952		
		5/8 x 1	171-087
3/8 x 3/4	170-439	5/8 x 1-1/4	171-366
3/8 x 3/4 (Stainless steel)	174-788	5/8 x 1-1/2	170-153
3/8 x 7/8	170-268	5/8 x 1-3/4 (Full thread)	170-030
3/8 x 7/8 (soc. hd.capscrew)	172-044	5/8 x 2	170-009
3/8 x 1	170-054	5/8 x 2 (Full thread)	171-772
3/8 x 1-1/4	170-005	5/8 x 2-1/4	173-009
3/8 x 1-1/4 (Stainless steel)	174-917	5/8 x 2-1/2	172-381
3/8 x 1-1/2	170-368	5/8 x 2-1/2 (Full thread)	170-129
3/8 x 1-3/4	172-383	5/8 x 2-3/4	172-356
3/8 x 2	170-245	5/8 x 3	170-258
3/8 x 2-1/4	170-320	5/8 x 3-1/2	170-038
3/8 x 2-1/2	170-257	5/8 x 4	170-371
3/8 x 2-1/2 (Full thread)	170-128	5/8 x 4-1/2	170-067
3/8 x 2-1/2 (Lag)	171-775	5/8 x 5	170-065
3/8 x 3	170-380	5/8 x 5-1/2	172-421
3/8 x 3-1/2	170-292	5/8 x 6	170-381
3/8 x 4	170-877	5/8 x 6-1/2	173-777
3/8 x 4-1/4 (Black oxide)	171-813	5/8 x 7-1/2	173-019
3/8 x 4-1/2	170-519	5/8 x 9-1/2	171-039
3/8 x 5	170-493		
3/8 x 5-1/2	174-196	3/4 x 1-1/2	173-507
3/8 x 5-1/2 (Full thread)	170-593	3/4 x 2	171-768
3/8 x 6	174-304	3/4 x 2 (Full thread)	170-058
3/8 x 6-1/2	171-291	3/4 x 2 (Grade 8)	171-877
3/8 x 7	172-587	3/4 x 2-1/4	171-275
		3/4 x 2-1/2	170-374
7/16 x 3/4	170-265	3/4 x 2-1/2 (Grade 8)	175-055
7/16 x 1	170-032	3/4 x 3	170-014
7/16 x 1-1/4	170-354	3/4 x 3 UNF	173-776
7/16 x 1-1/4 (Grade 8)	174-216	3/4 x 3-1/2	170-195
7/16 x 1-1/2	170-059	3/4 x 3-1/2 (Grade 8)	171-899
7/16 x 2	170-356	3/4 x 4	170-419
7/16 x 2-1/2	170-379	3/4 x 4 (Grade 8) UNF	173-579
7/16 x 3	170-270	3/4 x 4-1/2	170-846
7/16 x 5-1/2	170-377	3/4 x 4-1/2 (Grade 8)	173-039
7/16 x 6	170-378	3/4 x 4-1/2 (Grade 8) UNF	173-588
		3/4 x 5	173-508
		3/4 x 5 UNF	173-510
		3/4 x 5-1/2 (Grade 8) UNF	173-514
		3/4 x 6	171-116
		3/4 x 6 UNF	173-511
		3/4 x 6 (Grade 8)	173-231
		3/4 x 7	173-745
		3/4 x 7 UNF	173-747
		3/4 x 7-1/2	175-004
		3/4 x 8	173-509
		7/8 x 2-1/4	172-892
		7/8 x 3	172-002
		7/8 x 3-1/2	173-020
		7/8 x 4	173-299
		7/8 x 4 UNF	171-092
		7/8 x 6-1/2	173-774
		7/8 x 7	173-749
		7/8 x 7 UNF	174-097
		7/8 x 8	173-750
		7/8 x 8 UNF	173-515
		1 x 3-1/2	173-021
		1 x 4	175-119
		1 x 4 (Grade 8)	175-248
		1 x 7 UNF	173-516
		1 x 8	174-723
		1 x 8 (grade 8) UNF	173-713
		1-1/4 x 4-1/2 (grade 8)	175-003
		M8 x 16MM (Grade 8.8)	174-610
		M8 x 20MM (Grade 8.8)	175-193
		M8 x 25MM (Grade 8.8)	174-900
		M10 x 22MM (Grade 8.8)	175-016
		M10 x 25MM (Grade 8.8)	173-344
		M12 x 25MM (Grade 8.8)	171-566
		M12 x 35MM (Grade 8.8)	175-020
		M12 x 40MM (Grade 12.9)	175-190
		M12 x 45MM (Grade 10.9)	174-911
		M14 x 30MM (Grade 8.8)	173-518
		<b>CARRIAGE BOLTS</b>	
		1/4 x 1-1/4 (Grade 2)	170-311
		1/4 x 1-1/2 (Grade 2)	170-355
		1/4 x 2 (Grade 2)	170-299
		1/4 x 2-1/2 (Grade 2)	171-394
		1/4 x 2-3/4 (Grade 2)	170-508
		1/4 x 3	170-509
		5/16 x 1 (Grade 2)	170-370
		5/16 x 1-1/2 (Grade 2)	170-296
		5/16 x 2-1/2 (Grade 2)	171-395
		5/16 x 5-1/2 (Grade 2)	170-494
		3/8 x 3-1/2 (Grade 2)	171-283
		3/8 x 4-1/2 (Grade 2)	170-191
		3/8 x 5 (Grade 2)	170-495
		3/8 x 6-1/2 (Grade 2)	171-174
		3/8 x 8 (Grade 2)	170-297
		3/8 x 13 (Grade 2)	170-298
		3/8 x 13-1/2 (Grade 2)	170-300
		1/2 x 1-1/2 (Grade 5)	174-918
		1/2 x 6-1/2 (Grade 2)	171-098
		1/2 x 9 (Grade 2)	171-255
		5/8 x 2	175-110

**Hardware Part Number Listing**

5/8 x 2-1/2 (Grade 5) ..... 174-790

**PLOW BOLTS**

5/8 x 2 ..... 174-767

3/4 x 2-1/2 ..... 174-948

**TRUSS HEAD BOLTS**

#6-32 x 3/4 ..... 172-416

#6-32 x 1 ..... 173-079

#8-32 x 1-1/2 ..... 171-210

#10-32 x 3/4 ..... 171-604

#10-32 x 1 ..... 172-882

1/4 x 3/4 ..... 170-193

1/4 x 1 ..... 170-194

5/16 x 1 ..... 170-117

**SET SCREWS (Socket Head)(Cup Point)**

1/4 x 1/4 ..... 170-247

1/4 x 5/8 ..... 172-985

5/16 x 1/4 ..... 170-993

5/16 x 5/16 ..... 170-248

5/16 x 5/16 UNF ..... 170-825

5/16 x 3/8 UNF ..... 173-367

5/16 x 1/2 ..... 170-254

5/16 x 5/8 UNF ..... 170-456

5/16 x 1 (Sq hd) ..... 173-610

5/16 x 1-1/2 ..... 172-917

3/8 x 1/4 ..... 170-856

3/8 x 3/8 ..... 170-151

3/8 x 1/2 ..... 170-857

3/8 x 1/2 UNF ..... 171-469

3/8 x 3/4 ..... 174-190

3/8 x 3/4 (Sq hd) ..... 170-290

3/8 x 1 ..... 170-021

3/8 x 1 (Sq hd) ..... 173-609

3/8 x 1 (Sq hd) (Dog pt) ..... 171-551

7/16 x 7/16 ..... 170-288

7/16 x 1 (Sq hd) ..... 170-147

1/2 x 5/8 ..... 170-249

1/2 x 1 ..... 170-438

1/2 x 1-1/4 (half dog point) ..... 171-085

5/8 x 5/8 ..... 170-250

3/4 x 3/4 (Sq hd) (Dog pt) ..... 170-251

**HEX NUTS**

#6-32 ..... 172-418

#10-32 ..... 171-606

1/4 ..... 170-125

5/16 ..... 170-119

3/8 ..... 170-007

7/16 ..... 170-062

7/16 (Grade 8) UNF ..... 174-217

1/2 ..... 170-004

9/16 ..... 173-702

5/8 ..... 170-011

3/4 ..... 170-017

3/4 UNF ..... 170-159

3/4 (Grade 8) UNF ..... 173-520

7/8 ..... 171-776

1 ..... 173-022

1 UNF ..... 173-714

1 (Grade 8) ..... 175-247

1 (Grade 8) UNF ..... 173-519

1-1/8 UNF ..... 174-095

1-1/4 UNF ..... 170-130

1-1/4 (Grade 8) ..... 175-006

M8 x 1.25MM ..... 172-949

M30 x 1.5MM ..... 174-902

M50 x 1.5MM ..... 175-200

**LOCK NUTS**

#6-32 ..... 174-188

#10-32 ..... 174-073

1/4 ..... 170-069

5/16 ..... 170-137

3/8 ..... 170-047

7/16 ..... 170-239

1/2 ..... 170-042

1/2 UNF ..... 170-566

1/2 (Grade 8) ..... 171-671

9/16 ..... 172-220

5/8 ..... 170-031

3/4 ..... 170-185

3/4 (Grade 8) ..... 171-900

3/4 (Grade 8) UNF ..... 173-578

7/8 ..... 173-069

7/8 UNF ..... 171-093

1 ..... 174-928

1 UNF ..... 170-527

M45 x 1.5MM ..... 175-199

M50 x 1.5MM ..... 175-197

**JAM NUTS**

1/4UNF ..... 171-386

5/16 ..... 173-521

3/8 ..... 170-022

7/16 ..... 170-046

1/2 ..... 170-036

5/8 ..... 170-037

3/4 ..... 170-035

1 ..... 174-927

**FLAT WASHERS**

#10 ..... 171-525

1/4 ..... 170-301

1/4 Heavy ..... 171-083

1/4 Fender ..... 173-672

5/16 ..... 170-127

5/16 Fender ..... 173-811

3/8 ..... 170-244

3/8 Heavy ..... 170-302

3/8 Aluminum ..... 173-900

7/16 ..... 170-138

1/2 ..... 170-040

1/2 (Grade 8) ..... 172-984

9/16 ..... 173-693

5/8 ..... 170-066

5/8 (Grade 8) ..... 173-581

3/4 ..... 170-015

7/8 ..... 173-298

7/8 Heavy ..... 170-131

1 ..... 170-122

1-1/4 ..... 170-928

**LOCK WASHERS**

#6 ..... 172-417

#10 ..... 171-605

1/4 ..... 170-124

5/16 ..... 170-118

3/8 ..... 170-006

7/16 ..... 170-061

1/2 ..... 170-003

9/16 ..... 173-692

5/8 ..... 170-010

3/4 ..... 170-016

3/4 External Tooth ..... 174-793

7/8 ..... 172-003

1 ..... 171-021

1-1/4 ..... 175-005

**ZERKS**

1/8 NPT ..... 170-865

1/8 NPT-45 Deg ..... 170-864

1/8 NPT-65 Deg ..... 170-215

1/8 NPT-90 Deg ..... 170-866

3/16 drive in ..... 174-124

1/4-28 ..... 170-023

1/4-28 - 45 Deg ..... 170-148

1/4-28 - 90 Deg ..... 170-049

1/4 NPT ..... 170-277

1/4 NPT - 45 Deg ..... 174-130

**COTTER PINS**

1/16 x 1/2 ..... 170-992

3/32 x 3/4 ..... 170-364

1/8 x 1 ..... 170-045

1/8 x 1-1/4 ..... 170-033

1/8 x 1-1/2 ..... 170-382

5/32 x 1 ..... 170-421

5/32 x 1-1/2 ..... 170-236

5/32 x 3 ..... 170-135

3/16 x 1-1/4 ..... 170-991

3/16 x 2 ..... 170-115

1/4 x 1-1/2 ..... 170-521

1/4 x 2 ..... 170-056

1/4 x 2-1/2 ..... 173-961

**ROLLER CHAIN****CONNECTOR LINKS**

#50 ..... 170-088

#50-2R ..... 170-094

#60 ..... 170-089

#60-2R ..... 170-095

#60H ..... 171-102

#80 ..... 170-090

#80H ..... 170-821

#100 ..... 170-091

#100H ..... 171-969

#120 ..... 170-092

#140 ..... 170-093

#140H ..... 173-552

#160 ..... 170-888

**OFFSET LINKS**

#50 ..... 170-096

#50-2R ..... 170-102

#60 ..... 170-097

#60-2R ..... 170-103

#60H ..... 171-103

#80 ..... 170-098

#80H ..... 170-820

#100 ..... 170-099

#100H ..... 172-145

#120 ..... 170-100

#140 ..... 170-101

#140H ..... 173-553

#160 ..... 170-887

**ROLLER LINKS**

#50 ..... 171-415

#60 ..... 171-416

#80 ..... 171-417

#80H ..... 170-795

#100 ..... 171-418

#100H ..... 172-146

#120 ..... 171-419

#140 ..... 171-420

#160 ..... 171-421

Kuhn Knight, Inc.

1501 West 7th Ave., Brodhead, WI 53520

701 Cherry Ave., Greeley, CO 80632

**Part Number Index**

101-819 ...5	133-920 ...4	141-392 ...17	171-045 ...5
101-835 ...18	134-155 ...5	141-393 ...17	171-158 ...19
101-917 ...19	134-352 ...11, 22	141-394 ...17	171-380 ...19
101-918 ...19	134-409 ...19	141-395 ...17	171-464 ...22
102-048 ...15	134-602 ...4	141-396 ...17	171-543 ...23
102-049 ...15	134-771 ...22	141-397 ...17	171-544 ...23, 24
102-065 ...15	134-824 ...15	141-399 ...4	171-550 ...23, 24
102-066 ...15	134-843 ...15	141-402 ...4	171-712 ...25
102-307 ...15	135-936 ...4	141-572 ...16	171-723 ...22
102-323 ...7	135-946 ...7	141-880 ...17	171-769 ...7
102-325 ...15	135-958 ...11, 13	141-881 ...17	171-799 ...23, 24
102-331 ...5	135-961 ...15	141-882 ...17	171-820 ...25
102-437 ...4	135-994 ...7	141-883 ...17	171-911 ...25
102-439 ...4	136-076 ...4	141-884 ...17	171-913 ...25
103-052 ...19	136-178 ...7	141-885 ...17	171-914 ...25
103-523 ...22	136-322 ...4	141-886 ...17	171-915 ...25
103-549 ...11, 13	136-454 ...4	141-989 ...7	171-935 ...9
103-551 ...11, 13	136-921 ...11, 22	142-047 ...7	171-936 ...19
103-553 ...11, 13	137-132 ...19	170-008 ...7	171-937 ...16
103-560 ...11, 13	140-009 ...4	170-028 ...4, 23, 24	171-947 ...25
103-561 ...11, 13	140-294 ...7	170-056 ...15	171-948 ...25
103-562 ...16	140-310 ...16	170-075 ...22	171-949 ...25
103-711 ...15	140-316 ...7	170-122 ...22	171-960 ...19
103-717 ...5	140-322 ...11, 13	170-142 ...7	171-989 ...4, 7
103-789 ...7	140-323 ...11, 13	170-149 ...7	171-990 ...7
103-792 ...11, 13	140-324 ...11, 13	170-220 ...23, 24	172-024 ...9
103-793 ...11, 13	140-326 ...11, 13	170-233 ...16	172-110 ...25
103-795 ...13	140-340 ...11, 13	170-235 ...16, 22	172-128 ...18
103-809 ...7	140-344 ...11, 13	170-244 ...9	172-130 ...18
103-818 ...4	140-848 ...15	170-415 ...19	172-143 ...19
103-819 ...9	140-905 ...7	170-468 ...16	172-165 ...19
103-822 ...11, 13	140-906 ...7	170-471 ...16	172-166 ...19
103-823 ...11	140-920 ...16	170-490 ...25	172-183 ...18
103-825 ...16	141-166 ...7	170-518 ...5	172-288 ...4
103-826 ...16	141-167 ...7	170-776 ...23, 24	172-289 ...7
103-852 ...15	141-168 ...7	170-800 ...5	172-292 ...25
103-864 ...9	141-169 ...7	170-835 ...7	172-312 ...15
103-865 ...22	141-227 ...11, 13	170-845 ...5	172-313 ...15
103-866 ...22	141-230 ...11, 13	170-849 ...25	172-350 ...19
103-874 ...4	141-278 ...16	170-865 ...9, 15	172-360 ...15
103-877 ...22	141-279 ...7	170-893 ...25	172-361 ...15
103-878 ...22	141-293 ...11, 13	170-919 ...15	172-362 ...15
103-879 ...15	141-316 ...7	170-920 ...15	172-386 ...19
103-931 ...5	141-329 ...7	170-921 ...15	172-396 ...15
104-028 ...7	141-352 ...5	170-922 ...15	172-447 ...24
104-031 ...15	141-362 ...7	170-926 ...15	172-496 ...24
130-175 ...7	141-363 ...9	170-927 ...15	172-500 ...18
132-766 ...7	141-364 ...4, 9	170-928 ...15	172-751 ...5
132-988 ...19	141-391 ...17	171-030 ...16, 22	172-786 ...25

**Part Number Index**

172-793 ...16	173-533 ...9	175-009 ...5
172-800 ...18	173-731 ...25	175-010 ...5
172-801 ...19	173-945 ...25	175-011 ...25
172-802 ...19	174-501 ...18	175-046 ...18, 19
172-803 ...19	174-502 ...18	175-047 ...19
172-804 ...19	174-503 ...18	175-048 ...19
172-820 ...25	174-504 ...18	175-051 ...19
172-822 ...9	174-505 ...19	175-052 ...19
172-823 ...9	174-506 ...19	175-053 ...19
172-847 ...23	174-507 ...19	175-074 ...19
172-883 ...25	174-508 ...18	175-217 ...21
172-884 ...7	174-514 ...25	175-269 ...15
172-924 ...23, 24	174-558 ...11, 22	175-536 ...16, 22
172-987 ...4, 23, 24	174-577 ...15	180-281 ...25
172-994 ...24	174-672 ...11, 13	181-036 ...9
172-998 ...4	174-673 ...25	181-040 ...16
173-027 ...9	174-674 ...25	303-163 ...25
173-034 ...18	174-675 ...25	
173-041 ...25	174-676 ...15	
173-044 ...25	174-681 ...23	
173-065 ...4	174-682 ...24	
173-156 ...19	174-683 ...23	
173-211 ...20	174-684 ...24	
173-212 ...20	174-686 ...25	
173-213 ...20	174-687 ...25	
173-214 ...20	174-689 ...23	
173-215 ...20	174-690 ...23	
173-216 ...20	174-695 ...24	
173-217 ...20	174-696 ...24	
173-218 ...20	174-719 ...19	
173-219 ...20	174-724 ...25	
173-225 ...18	174-725 ...25	
173-226 ...18	174-775 ...25	
173-227 ...18	174-784 ...15	
173-228 ...18	174-795 ...4, 7	
173-270 ...16	174-801 ...25	
173-273 ...22	174-802 ...25	
173-274 ...22	174-803 ...25	
173-275 ...22	174-808 ...16, 25	
173-281 ...25	174-838 ...15	
173-282 ...25	174-839 ...15	
173-284 ...4	174-840 ...15	
173-320 ...23	174-919 ...25	
173-321 ...24	174-923 ...20	
173-426 ...23	174-943 ...25	
173-435 ...24	174-972 ...16	
173-448 ...25	175-004 ...15	
173-493 ...22	175-007 ...5	
173-496 ...16	175-008 ...5	