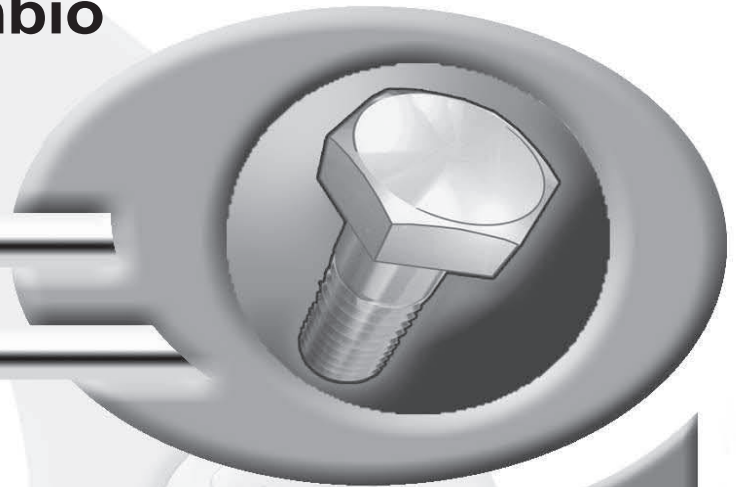


Pièces de rechange
Spare parts list
Ersatzteilliste
Catalogo Pezzi di Ricambio



Mélangeuse
Mixer feeder wagon
Futtermischwagen
Carri miscelatoria



3136 /3142 Reel Auggie Trailers





REEL AUGGIE MIXERS

3136/3142

Trailer Type Parts Manual

Table of Contents	
Abbreviations	4
Using This Service Parts Listing	5
Front End and Drive Shaft Parts	6
Chains and Tighteners	7
Rear Drive Parts	8
Rear Drive Shields, Bucket Guard and Grease Line Parts	10
Upper Auger Parts	11
Lower Auger Parts	12
Reel Parts	13
Door Parts	14
Slide Tray Parts	15
3 Auger Discharge Parts - (After S/N B0001)	16
3 Auger Discharge Parts - (Before S/N B0001)	18
3' Chain and Slat Chute (Option)	20
4' Chain and Slat Chute (Option)	21
Selector Valve - Power Chute Option (After S/N B0001)	22
Selector Valve - Power Chute Option (Before S/N B0001)	23
Selector Valve - Slide Tray Parts (S/N B0001 And After)	24
Selector Valve - Slide Tray Parts (Before S/N B0001)	25
Undercarriage Parts (S/N B0001 And After)	26
Undercarriage Parts (Before S/N B0001)	28
PTO Driveline Parts (Non-CV) - 540 RPM - 6 Spline - 1 3/8" Yoke	30
PTO Driveline Parts (Non-CV) - 1000 RPM - 21 Spline - 1 3/8" Yoke	32
HAY-MAX System Parts	34
Repair Liner Parts	35
Jackstand Parts	36
Light Kit, before series B0001	37
Enhanced lighting (SAE), series B0001 & C0001	38
Enhanced lighting (ISO), series B0001 & C0001	39
Decals	40
Hardware Part Number Listing	41
Part Number Index	43

Catalog Part Number 006058 Unit Serial Number _____

Operator Instruction Manual for this unit: 006047

Abbreviations

Assy.....Assembly
 A/R.....As Required
 B.....Bolt
 Brg..... Bearing
 BSN..... Before Serial Number
 Btm.....Bottom
 C-Bolt..... Carriage Bolt
 Ctrr..... Cotter
 CV.....Constant Velocity
 Deg..... Degree
 Dia..... Diameter
 ea..... Each
 eq or Equiv.....Equivalent
 Fln.....Flanged Lock Nut
 Fw..... Flat Washer
 Ga.....Gauge
 Gr or Grd.....Grade
 Hd..... Head
 Hfw..... Heavy Flat Washer
 Hyd.....Hydraulic
 ID..... Inside Diameter
 Ill or Illus..... Illustration
 Ind.....Indicator
 Jn..... Jam Nut
 Kw..... Keyway
 LH..... Left Hand
 Ln..... Lock Nut
 Lw..... Lock Washer
 Mtg Hrd..... Mounting Hardware
 NC..... National Coarse
 NF..... National Fine
 NLA..... No Longer Available
 NPT..... National Pipe Thread
 OD..... Outside Diameter
 Pc(s).....Piece(s)
 PD..... Pitch Diameter
 PTO..... Power Takeoff (shaft)
 Qty..... Quantity
 RH..... Right Hand
 SN..... Serial Number
 SHCS.....Socket Head Cap Screw
 Spk, or Spkt or Sprkt..... Sprocket
 Sq..... Square
 SS..... Stainless Steel
 SSB..... Stainless Steel Bolt
 St.....Straight
 Std.....Standard
 STS..... Self Tapping Screw
 UASN..... Used After Serial Number
 UBSN..... Used Before Serial Number
 W..... With
 W/O..... With Out

Using This Service Parts Listing

This listing uses a number indentation system to specify the parts of an assembly. Any number which is indented to the right, indicates that it is a component of the item to the upper left. Example:

Part no	Qty	Description
102-AAA	#	Assembly A
102-BBB	#	Sub-Assembly B (Component of A)
140-xxx	#	Sub-Component of B
140-xxx	#	Sub-Component of B
102-CCC	#	Sub-Assembly C (Component of A)
etc.		

Using this system, the subassemblies and their components are included if an Assembly is ordered. Similarly, the components of a subassemblies are included if a subassembly is ordered.

The quantity (Qty) associated with an assembly, represents the number of times an assembly could be shown in the drawing. The subassembly quantity however, is the number of times a subassembly is used to build one assembly. Similarly, the component quantity refers to the number of times a given component is found in one subassembly.

MODEL AND SERIAL NUMBER INFORMATION is located near the front left hand corner (Fig. A). The model number, serial number and part number should be known when asking service personnel for parts.

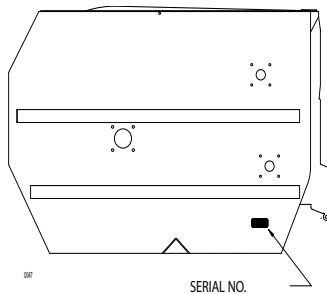


Figure A

The serial number may consist of a number, or a number with a letter prefix. When referring to serial number breaks in the text of this manual, a serial number with a prefix will have been manufactured after a serial number without a prefix (A0001 made after 0123). Likewise, a higher prefix letter would indicate manufacture after a lower prefix letter (B0001 made after A0123). Therefore, if the text refers to units manufactured after serial number B0123, this would include "B" series numbers greater than 0123, and all numbers with a higher letter prefix.

If you cannot find the part you need, be as descriptive as possible when placing an order:

Sprockets: give the bore size, number of teeth, and size of keyway.

Roller chain: give the size of chain (stamped on the side of each link) and number of links.

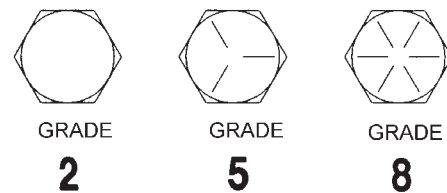
Shafting: give the diameter, length, and quantity and size of keyways.

Hardware is generally not included with parts. If you need any hardware, check the size, the length, and the grade (Fig. B), then check the hardware list in this manual for the part numbers.

All hex head bolts are grade 5, and nuts are grade 5 unless otherwise stated.

The hardware listing also includes zerks, cotter pins, set screws, and roller chain links.

The illustrations in this manual are meant to be used only as a guide for identifying parts and locating their relative positions.

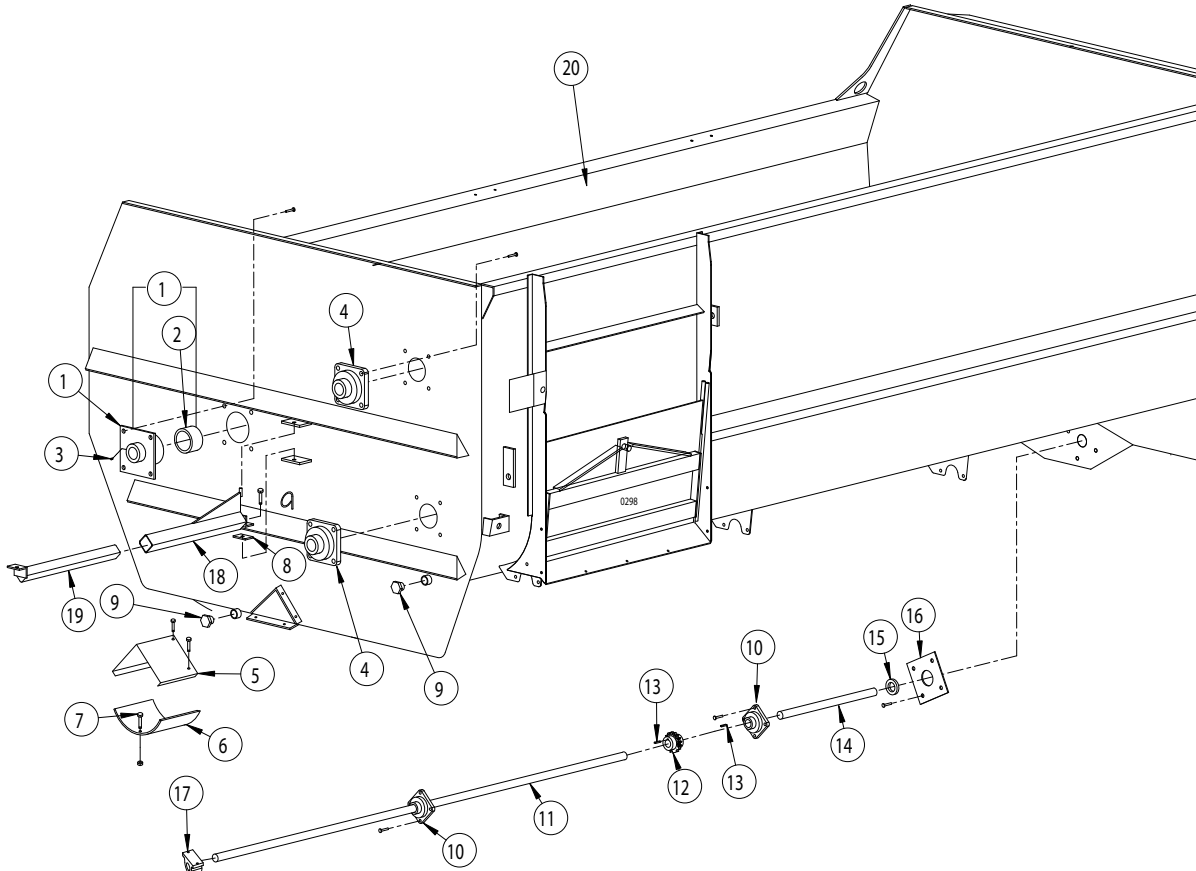


BOLT HEAD GRADE MARKING

Figure B

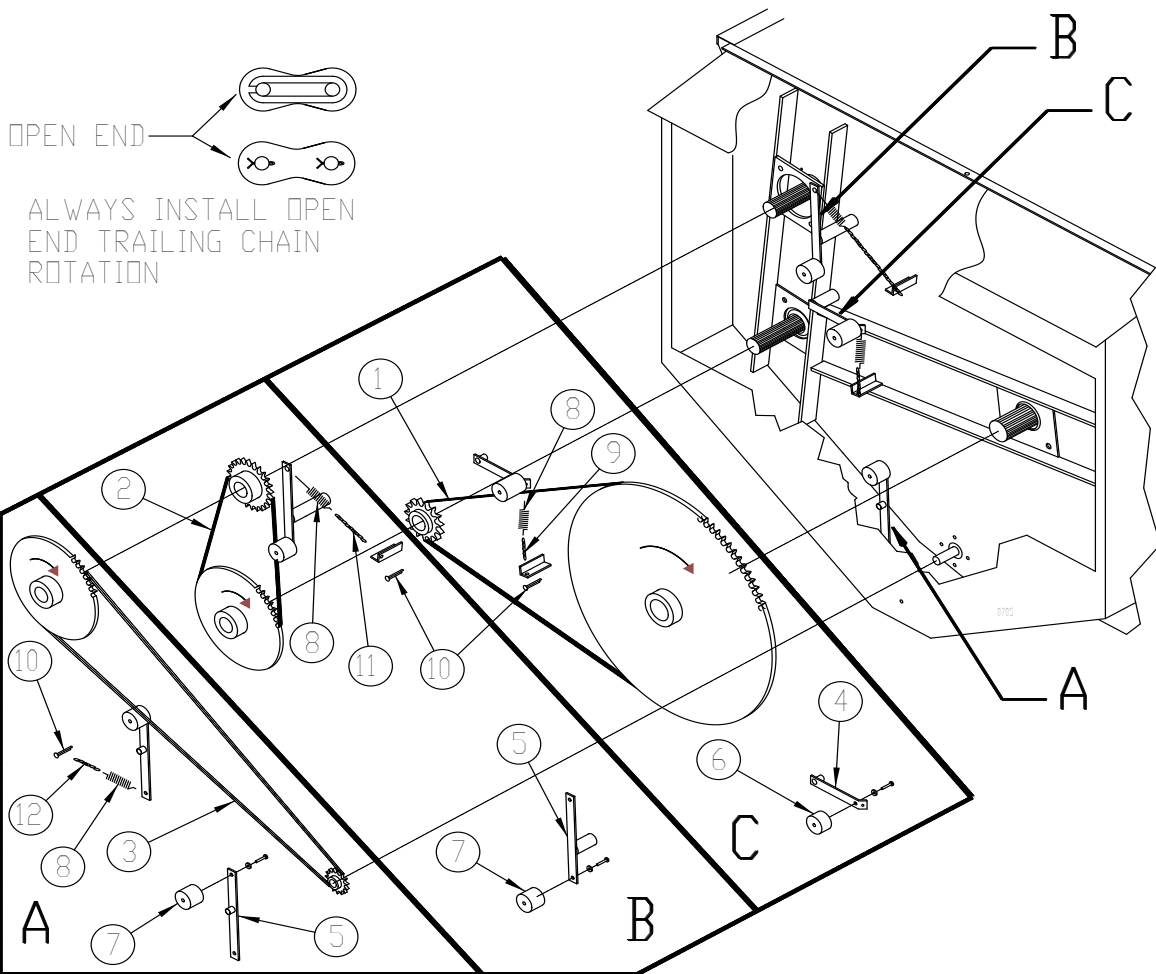
0072

Front End and Drive Shaft Parts



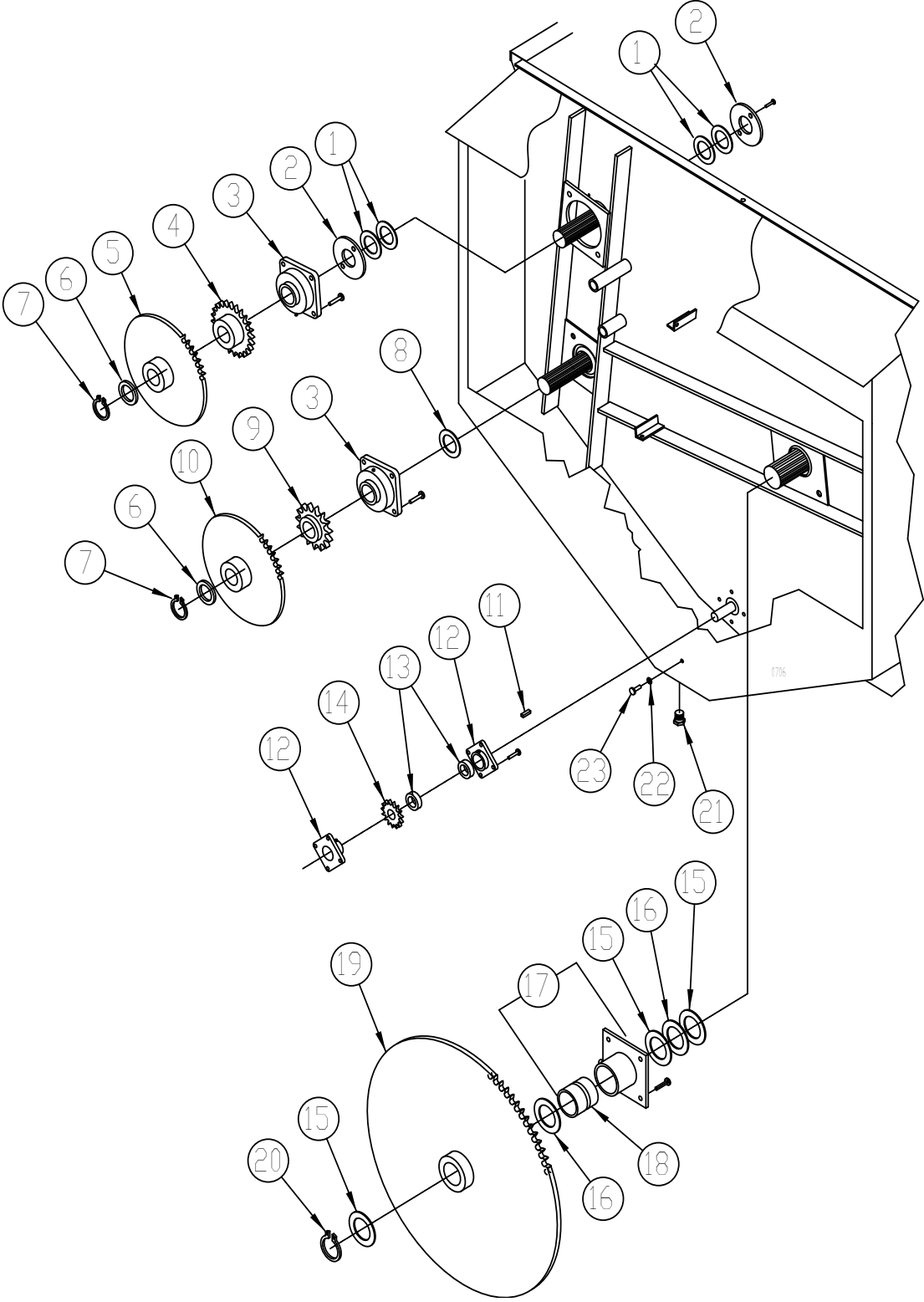
REF	PART NO	QTY	DESCRIPTION
1	102-261	1	Reel Bearing Assembly; Mtg Hrd: 5/8" x 1 1/2" Bolt, Lw, Nut (4ea)
2	135-704	1	Bearing Sleeve
3	170-865	1	Zerk; 1/8" NPT
4	170-008	2	Bearing; 2" Roller; Mtg Hrd: (upper) 5/8" x 1 1/2 Bolt. Lw, Nut (4ea); (lower) 5/8" x 2" Bolt. Lw, Nut (4ea)
5	136-411	1	PTO Canopy, Mtg Hrd: 3/8" x 1" B, Lw, Nuts (4ea)
6	133-920	1	Belt; PTO Shield, 5/16" x 3/4" B, Fln(4ea)
7	172-987	4	Shear Bolt; 5/16" x 2" Grade 5 LN (540 RPM) See PTO Page
	172-986	4	Shear Bolt; 1/4" x 2" Grade 5 LN (1000 RPM) See PTO Page
8	136-454	1	Belt; Rubber. 1/4" x 3 1/2" x 2"
9	171-919	2	Pipe Plug; 1 1/4" PVC
10	171-585	2	Bearing; 1 3/8" Roller (ecc.lock) Mtg Hrd:1/2" x1 1/2" Bolt, Lw,Nut(3ea)
11	136-415	1	Input Shaft; 1 3/8" x 85" long (3136)
	136-362	1	Input Shaft; 1 3/8" x 109" long (3142)
12	136-118	2	Sprocket; 50-B-16 1 3/8B., 3/8 K.W.
	170-316	1	Chain; 50-2-16 P
13	171-409	2	Key; 3/8" sq. x 1 1/4"
14	136-361	1	Input Shaft Extension; 1 3/8" x 66" (Used on models Before S\N C0001)
	147-183	1	Input Shaft Extension; 1 3/8" x 66" (Used on models S\N C0001 and after)
15	173-164	1	Lip Seal; 1 3/8" I.D. C/R # 13536
16	136-260	1	Seal Retaining Plate
17	170-060	1	Bearing; 1 3/8" Pillow Block; Mtg Hrd: 1/2" x 2" Grade 5 Bolt, Lw, Nut (2ea) and 172-445 Fw (2ea)
18	102-437	1	Outer Swing Arm Assy; Mtg Hrd: 1/2" x 1-1/2" Hex Hd, Ln
19	102-439	1	Inner Swing Arm Assy\
20	136-306	1	Sheet, 10 GA x 26" x 155.75"

Chains and Tighteners



REF	PART NO	QTY	DESCRIPTION
1	171-988	1	Roller Chain; 120-1-119 P
2	172-493	1	Roller Chain; 100-1-70P
3	173-306	1	Roller Chain; 80-1-164 (540rpm)
	173-307	1	Roller Chain; 80-1-178 (1000rpm)
4	101-819	1	Tightener Arm
5	101-818	2	Tightener Arm
6	134-086	1	Tightener Block; Mtg Hrd: 1/2" x 4" Bolt, Fw, Lw, Nut
7	134-155	2	Tightener Block; Mtg Hrd: 1/2" x 2-3/4", Bolt, Fw, Lw, Nut
8	172-751	3	Spring; 1-1/2" x 8-1/4"
9	170-478	1	Machine Chain; #4 x 12 Links
10	170-800	3	Clinch Pin
11	170-845	1	Machine Chain; #4 x 17 links
12	171-045	1	Machine Chain; #4 x 22 links

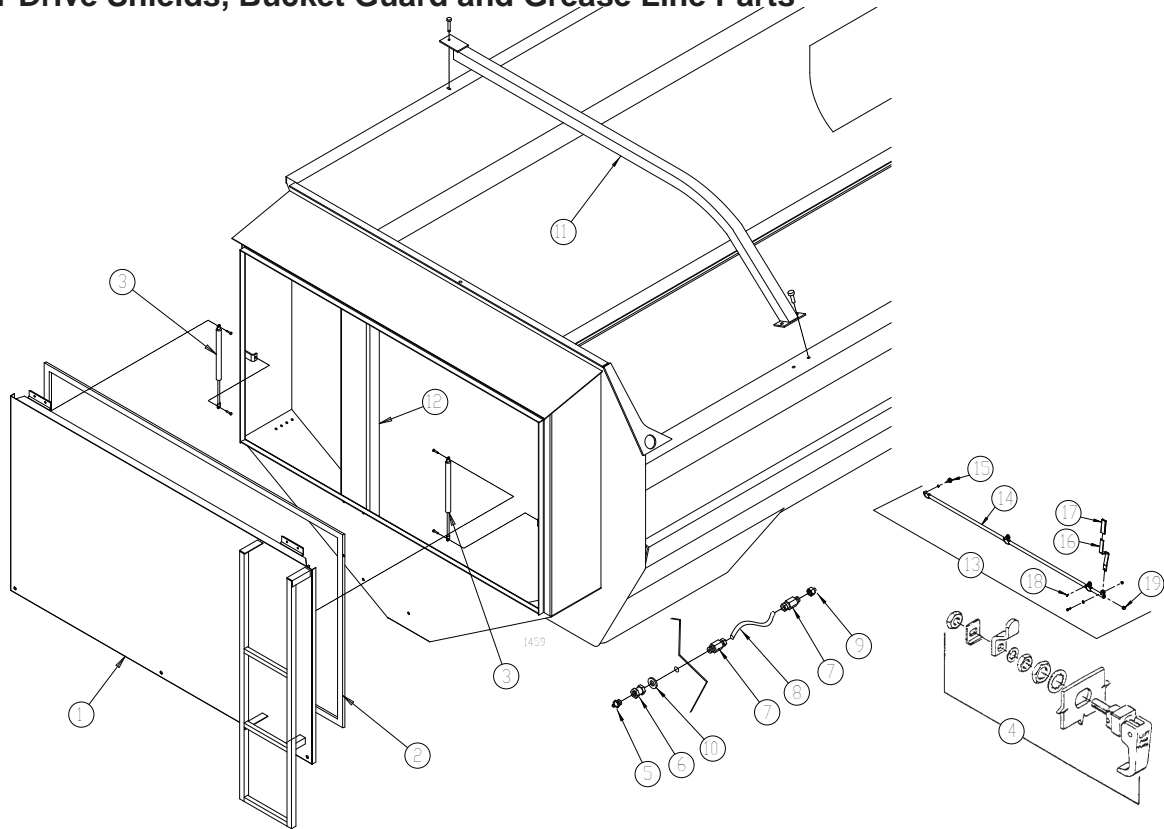
Rear Drive Parts



Rear Drive Parts

REF	PART NO	QTY	DESCRIPTION
1	135-598	4	Seal Washer - Plastic
2	136-343	2	Seal Housing; Mtg Hrd: 5/16" x 1 1/2" Bolt, Lw, Nut (2ea)
3	171-930	2	Bearing; 3" Roller; Mtg Hrd: 3/4" x 2 1/2", Lw, Nut (4ea)
4	136-333	1	Sprocket; 100-B-17, 3" Splined
5	136-335	1	Sprocket; 80-B-60 (540 rpm) 3" Splined
	136-334	1	Sprocket; 80-B-85 (1000 rpm) 3" Splined
6	172-367	A/R	Spacer Shim, 14ga. x 3" I.D.
	172-368	A/R	Spacer Shim, 10ga. x 3" I.D.
7	171-934	2	Retaining Ring; 3" External (Tru-Arc 5100-300)
8	133-278	1	Seal Washer - Plastic
9	136-331	1	Sprocket; 120-B-13 3" Splined
10	136-332	1	Sprocket; 100-B-40 3" Splined
11	171-409	1	Key - Straight; 3/8" sq. x 1 1/4" (Used on models Before S\N C0001)
	170-052	1	Key - Straight; 3/8" sq. x 1 1/8" (Used on models S\N C0001 and after)
12	171-585	2	Bearing; 1-3/8" Roller, Mtg Hrd: 1/2" x 1 3/4" Bolt Lw, Nut (4ea) (front) 1/2" x 1-1/2" Bolt, Lw, Nut (4ea) (rear)
13	172-193	2	Lock Collar; 1 3/8"
14	131-894	1	Sprocket; 80-B-12 1 3/8B., 3/8 K.W. (Used on models Before S\N C0001)
	147-184	1	Sprocket; 80-B-12 1 3/8B., 3/8 K.W. (Used on models S\N C0001 and after)
15	136-322	3	Thrust Shim; 10 ga. (2 req'd behind bearing. As required behind retaining ring)
16	135-697	2	Seal Washer - Plastic
17	102-259	1	Bearing Assembly; 4"
18	135-692	1	Bearing Sleeve; 4"
19	134-024	1	Sprocket; 120-B-92 4" Splined
20	171-989	1	Retaining Ring; 4" External (Tru-Arc 5100-400)
21	171-919	1	Drain Plug; 1 1/4 Pipe
22	172-884	1	Seal Washer - Plastic 1/2" Nylon
23	170-149	1	Oil Plug; 1/2" x 1" Bolt

Rear Drive Shields, Bucket Guard and Grease Line Parts



REF	PART NO	QTY	DESCRIPTION
1	105-804	1	Safety Shield; Rear Drive; Mtg Hrd: 5/16" x 1" Bolt Fw, Lw, Nut (6 ea)
2	171-935**	19'	Shield Gasket; 3/8" x 3/4" Closed Cell Foam
3	173-533	2	Gas Lift Support; Mtg Hrd: 3/8" x 1 1/2" Bolt Lw (2 ea) 3/8" Nut (4 ea)
4	173-027	3	Lift and Turn Latch
5	170-865	1*	Grease Zerk 1/8" NPT
6	172-024	1*	Coupling
7	172-822	2*	Compression Fitting
8	180-630**	*	Grease Line Tubing
		36"	Required for upper auger bearing
		16"	Required for lower auger bearing
		48"	Required for rear reel bearing
		50"	Required for input shaft bearing
		30"	Required for inner countershaft bearing
		42"	Required for outer countershaft bearing
9	172-823***	1*	Adapter Fitting; 1/4" SAE x 1/8" NPTF
10	170-244	1*	Flat Washer 3/8"
11	102-008	2	Bucket Guard; Mtg Hrd: Left side 3/8" x 1 1/4" bolt, Fw, Lw, N (1 ea) Right side 3/8" x 1 1/4" bolt, Lw, N (2 ea)
12	142-312	1	Rear Bearing Mount; Mtg Hrd: Top: 1/2" x 1" Bolt, Lw, Nut (2 ea) Bottom: 1/4" x 1 1/4" Bolt, Fw, Lw, Nut (4 ea)
13	73005410****	1	Latch Assembly
14	73002520****	1	Latch System
15	76011580****	3	Foot; Mtg Hrd: 3/8" Jam Nut
16	76011480****	1	Handle; Mtg Hrd: 3/8" x 1 1/4" bolt, Fw, FlN
17	70177164****	1	Handle Cap
18	76011600****	3	Plug
19	76011590****	1	Plug

* Quantity required to complete 1 grease line assy

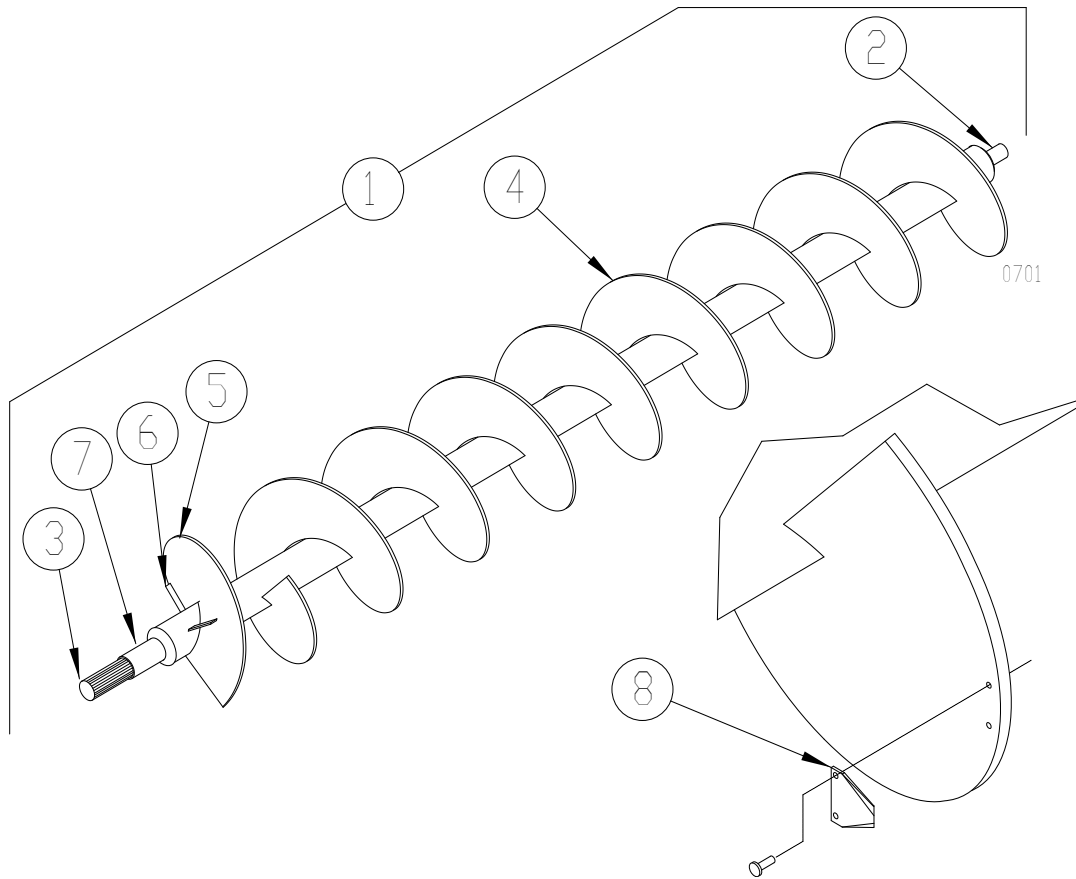
** Sold by the linear foot.

*** Not required on all installations.

**** D Series and After

Kuhn North America, Inc.
1501 West 7th Ave., Brodhead, WI 53520

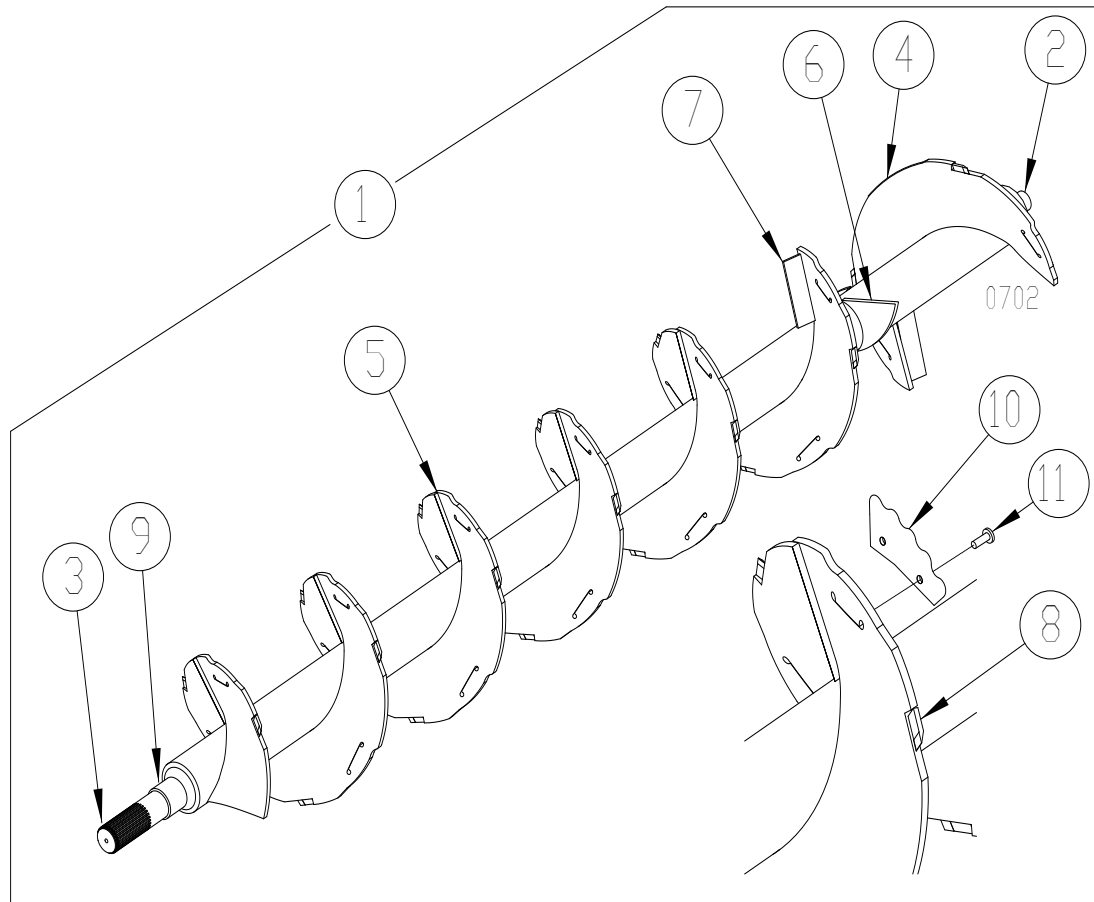
Upper Auger Parts



REF	PART NO	QTY	DESCRIPTION
1	102-482	1	Upper Auger Assembly (3136)
	102-483	1	Upper Auger Assembly (3142)
2	102-413	1	Front Plug Assembly, 2" (weld on)
3	102-407	1	Rear Plug Assembly, 3" splined (weld on)
4	136-748	8	Flighting, RH; (3136) 16"P x 20" OD x 8 5/8" ID x 1/4" THK
	136-748	9	Flighting, RH; (3142) 16"P x 20" OD x 8 5/8" ID x 1/4" THK
5	136-436	1	Flighting, LH; 20"P x 20" OD x 8 5/8" ID x 1/4" THK
6	135-555	7	Flighting Brace, 3/8" x 1 1/2" x 5-1/2"
7	136-408	1	Spacer Ring
8	174-558*	54	Knife, Sickle Section (3136) ; Mtg Hrd: 5/16" x 1 1/4" Bolt, Lw & Nut (2 ea)
	174-558*	70	Knife, Sickle Section (3142) ; Mtg Hrd: 5/16" x 1 1/4" Bolt, Lw & Nut (2 ea)

* Quantities may vary slightly.

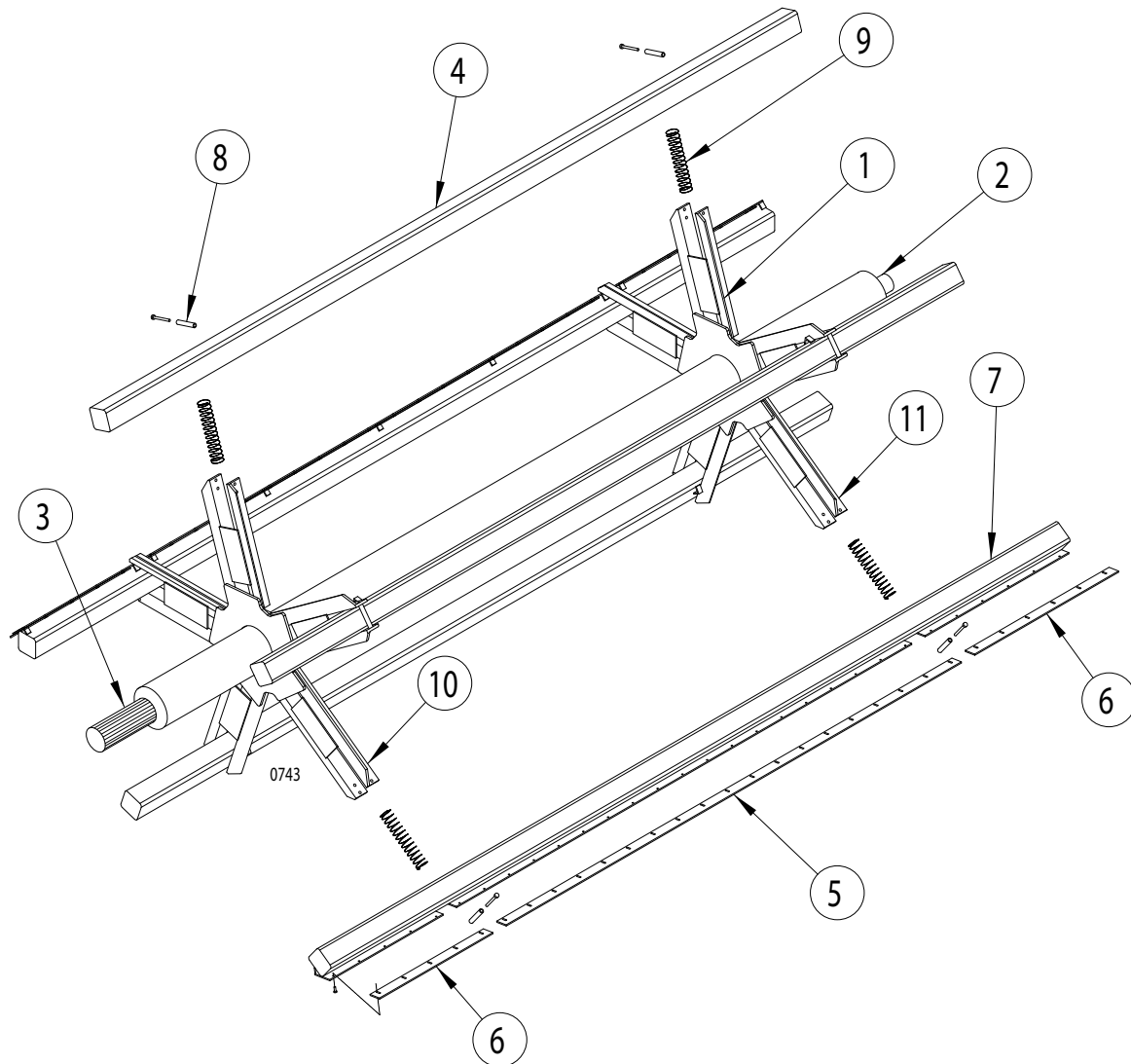
Lower Auger Parts



REF	PART NO	QTY	DESCRIPTION
1	104-084	1	Lower Auger Assembly (3136)
	104-085	1	Lower Auger Assembly (3142)
2	102-404	1	Front Plug Assembly, 2" (weld on)
3	102-405	1	Rear Plug Assembly, 3" Splined
4	142-187	1	Flighting, RH; 20"P x 20"OD x 5 9/16" ID x 1/2" THK
5	142-186	5	Flighting, LH; 20"P x 20"OD x 5 9/16" ID x 1/2" THK (3136)
	142-186	7	Flighting, LH; 20"P x 20"OD x 5 9/16" ID x 1/2" THK (3142)
6	134-491	2	Auger Paddle
7	134-547	2	Flighting Brace, 1/2" x 2" x 5 3/8"
8	175-781	17	Lower Auger Knife (weld-on) (3136) (Qty May Vary)
	175-781	21	Lower Auger Knife (weld-on) (3142) (Qty May Vary)
9	136-408	1	Spacer Ring
10	174-064*	3	Scallop Knife, RH; (Used on Item 4) (Qty may vary)
	174-065*	16	Scallop Knife, LH; (Used on Item 5) (3136) (Qty may vary)
	174-065*	19	Scallop Knife, LH; (Used on Item 5) (3142) (Qty may vary)
11	174-093*	38	Screw, sochd, 1/2" x 1 1/2"; (3136) Mtg Hrd: 1/2" lock Jam nut (Qty may vary)
	174-093*	44	Screw, sochd, 1/2" x 1 1/2"; (3142) Mtg Hrd: 1/2" lock Jam nut (Qty may vary)

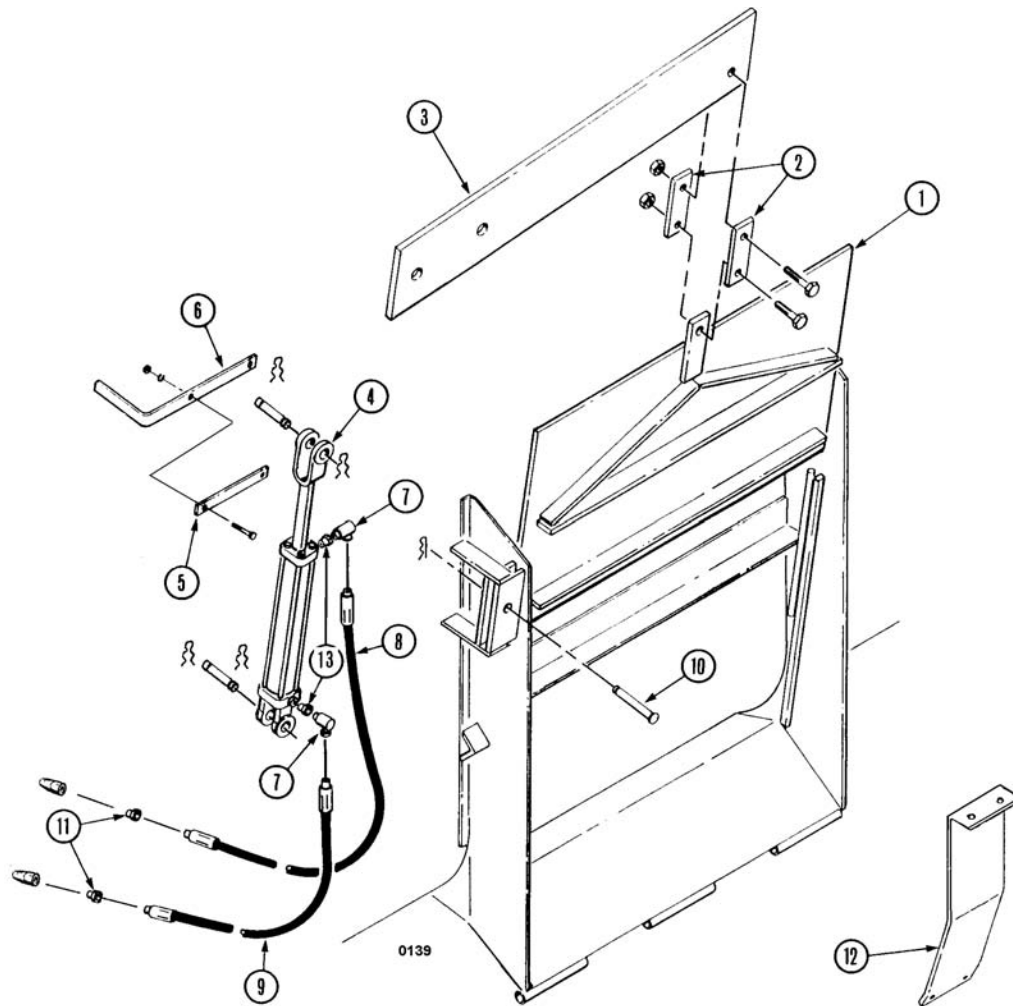
* Used with Roughage Maxx only.

Reel Parts



REF	PART NO	QTY	DESCRIPTION
1	102-422	1	Reel Weldment (3136)
	102-401	1	Reel Weldment (3142)
2	102-402	1	Front Plug Assembly (weld on)
3	102-248	1	Rear Plug Assembly (weld on)
4	102-424	3	Reel Cross Tube; (3136) Mtg Hrd: 1/2" x 5" Bolt, LW, N
	102-410	3	Reel Cross Tube; (3142)Mtg Hrd: 1/2" x 5" Bolt, LW, N
5	136-393	2	Plastic Wiper Blade (3136); 1/4" x 2 3/4" x 76 1/4", Mtg Hrd: 1/4" x 7/8" Bolt, (171-083 Heavy Washer), Lw, Nut (12ea)
	136-327	2	Plastic Wiper Blade (3142); 1/4" x 2 3/4" x 100 1/4", Mtg Hrd: 1/4" x 7/8" Bolt, (171-083 Heavy Washer), Lw, Nut (16ea)
6	135-675	4	Plastic Wiper Blade (3136); 1/4" x 2 3/4" x 22 3/4", Mtg Hrd: 1/4" x 7/8" Bolt, (171-083 Heavy Washer), Lw, Nut (4ea)
	135-675	4	Plastic Wiper Blade (3142); 1/4" x 2 3/4" x 22 3/4", Mtg Hrd: 1/4" x 7/8" Bolt, (171-083 Heavy Washer) Lw, Nut (4ea)
7	102-423	2	Wiper Tube Weldment (3136); Mtg Hrd: 1/2" x 5" Bolt, LW, N
	102-409	2	Wiper Tube Weldment (3142); Mtg Hrd: 1/2" x 5" Bolt, Lw, Nut
8	135-698	10	Retaining Sleeve
9	171-920	10	Spring Compression
10	105-648	4	Rear Reel Spider Arm
11	105-619	4	Front Reel Spider Arm

Door Parts

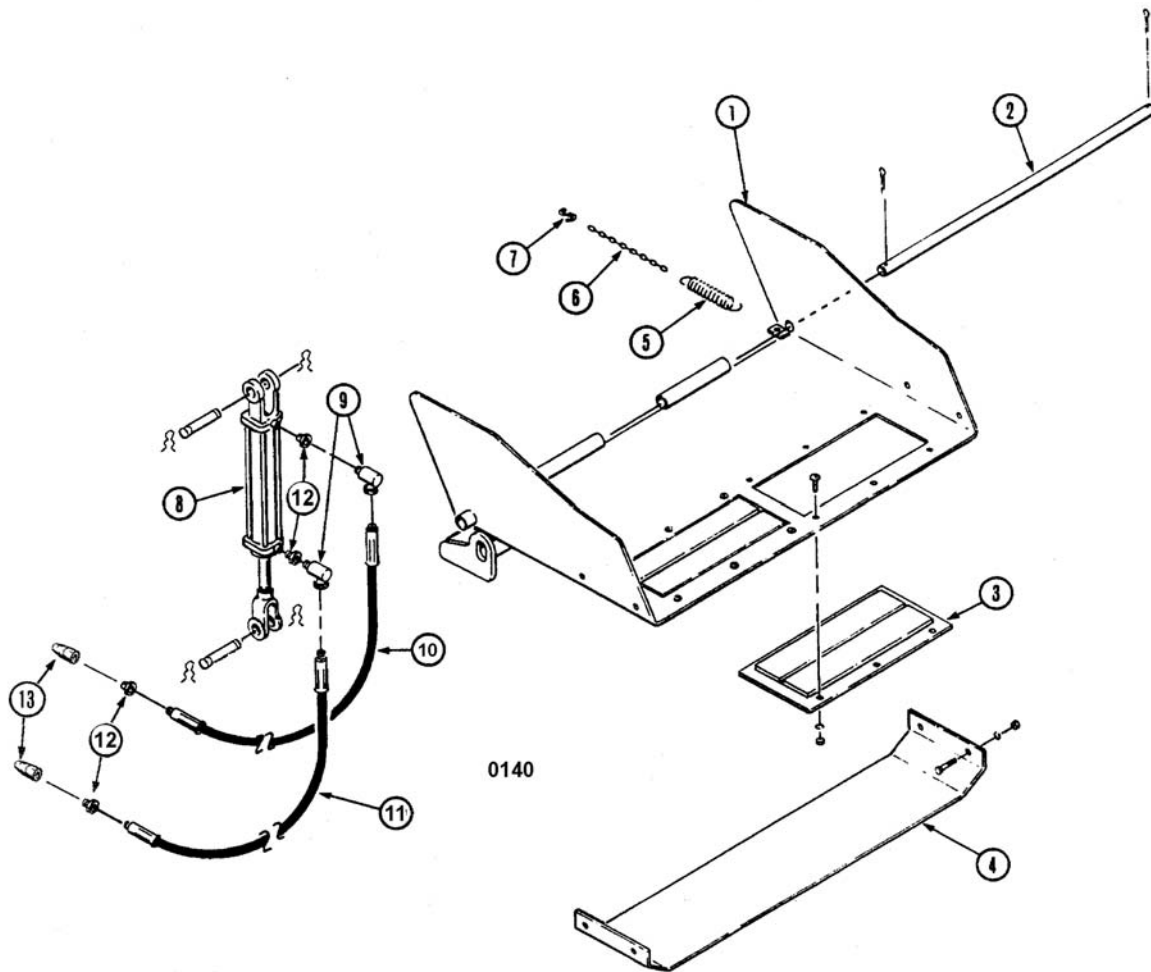


REF	PART NO	QTY	DESCRIPTION
1	102-414	1	Door Assembly
2	136-363	2	Door Linkage Bar; Mtg Hrd: 5/8" x 2-1/2" Bolt, Ln (2ea)
3	136-360	1	Door Pivot Bar
4	175-686 ^A	1	Hydraulic Cylinder; 2" Dia x 8" Stroke (Seal Kit 170-075)
	173-270 ^B	1	Hydraulic Cylinder; 2" Dia x 8" Stroke (Seal Kit 170-075)
5	136-418	1	Door Gauge Mount
6	136-419	1	Door Gauge; Mtg Hrd: 1/4" x 1" Truss Head Bolt, Lw, Nut (2ea)
7	175-673 ^A	2	90° Adapter; 06JFS x 06JM
	171-030 ^B	2	Swivel Adapter; 3/8" - 90°
8	175-907 ^A	1	Hydraulic Hose; 1/4" x 170"
	170-471 ^B	1	Hydraulic Hose; 1/4" x 170"
9	175-906 ^A	1	Hydraulic Hose; 1/4" x 162"
	170-468 ^B	1	Hydraulic Hose; 1/4" x 162"
10	170-073	1	Pin; 1" dia. Secures with (170-074) Hairpin Clip
11	175-675 ^A	4	Adapter, Str, 08OM x 06JM
	170-235 ^B	2	Fitting, Reducer; 1/2" to 3/8" (Connecting to 175-536 Pioneer Quick Coupler)
12	136-326	A/R	Door Flow Control Plate; Mtg Hrd: 5/16" x 1 1/4" Bolt, Lw, Nut (2ea) ; 5/16" x 1" Bolt, Lw, Nut (2ea)
13	175-687 ^A	2	Adapter Quick Coupler
	175-536 ^B	2	Pioneer Quick Coupler

^A Parts used on machines with serial numbers B0001 and after

^B Parts used on machines with serial numbers before B0001

Slide Tray Parts

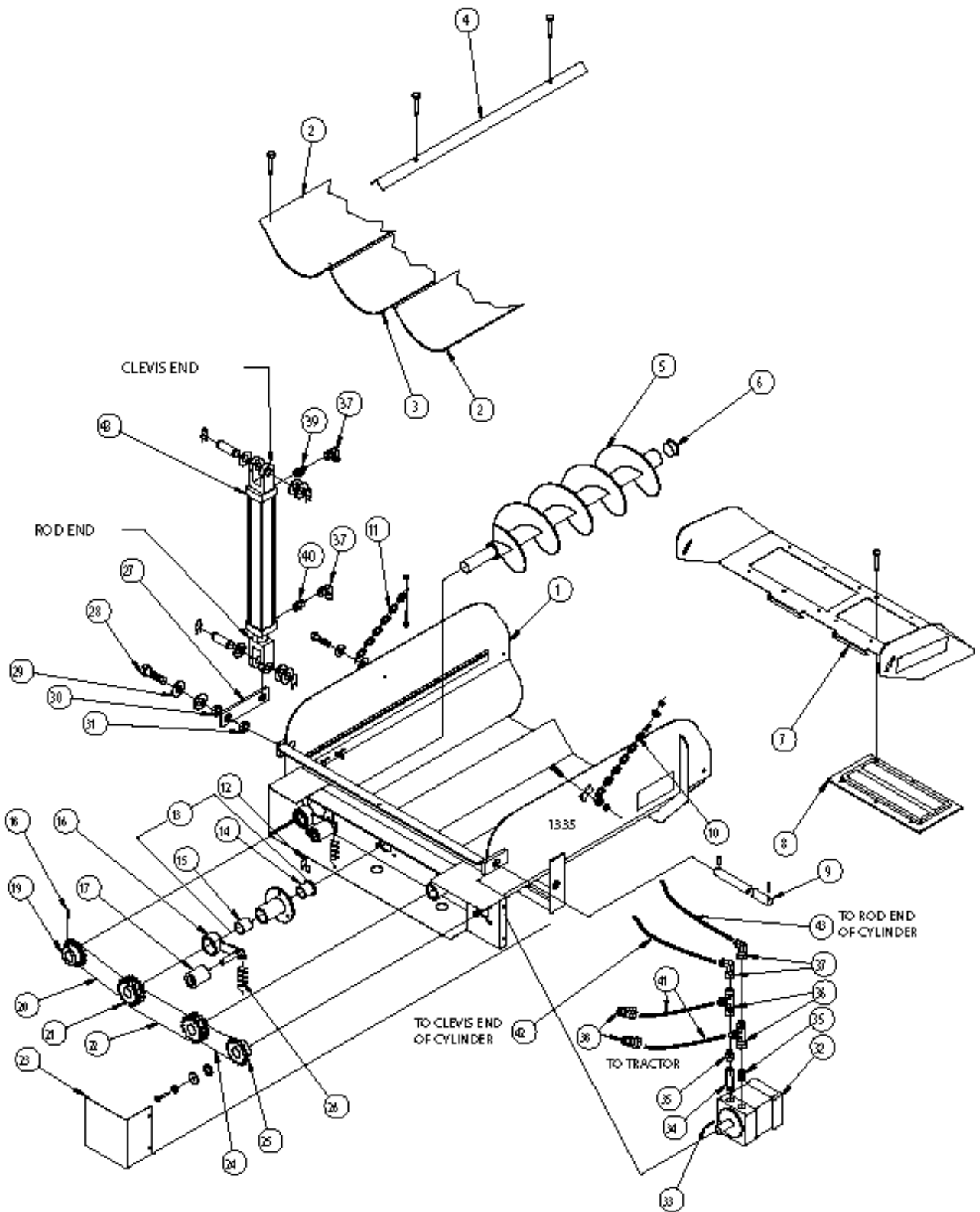


REF	PART NO	QTY	DESCRIPTION
1	102-430	1	Slide Tray Assembly See Decal Section for Decals
2	136-444	1	Pivot Rod; 7/8" x 39 1/2" (secure with 170-115 cotter pin; 2ea)
3	171-937	2	Magnet; Mtg Hrd: 1/4" x 3/4" Truss Head Bolt, Fw, Lw, Nut (6ea Magnet)
4	136-378	1	Skid Plate; Mtg Hrd: 1/4" x 3/4" Pan Head Screw, Lw, Nut (4ea)
5	172-005	1	Spring; 6"
6	170-478	1	Machine Chain; #4 x 12 links
7	170-947	1	"S" Hook
8	175-686 ^A	1	Hydraulic Cylinder; 2" x 8" (Seal Kit 170-075)
	173-270 ^B	1	Hydraulic Cylinder; 2" x 8" (Seal Kit 170-075)
9	175-673 ^A	2	90° Adapter, 06JFS x 06JM
	171-030 ^B	2	Swivel Connector; 3/8" x 90°
10	175-907 ^A	1	Hydraulic Hose; 1/4" x 170"
	170-471 ^B	1	Hydraulic Hose; 1/4" x 170"
11	175-906 ^A	1	Hydraulic Hose; 1/4" x 162"
	170-468 ^B	1	Hydraulic Hose; 1/4" x 162"
12	175-675 ^A	4	Adapter, Str, 08OM x 06JM
	170-235 ^B	2	Fitting, Reducer; 1/2" to 3/8" (Connecting to 175-536 Pioneer Quick Coupler)
13	175-687 ^A	2	Adapter Quick Coupler
	175-536 ^B	2	Pioneer Quick Coupler

^A Parts used on machines with serial numbers B0001 and after

^B Parts used on machines with serial numbers before B0001

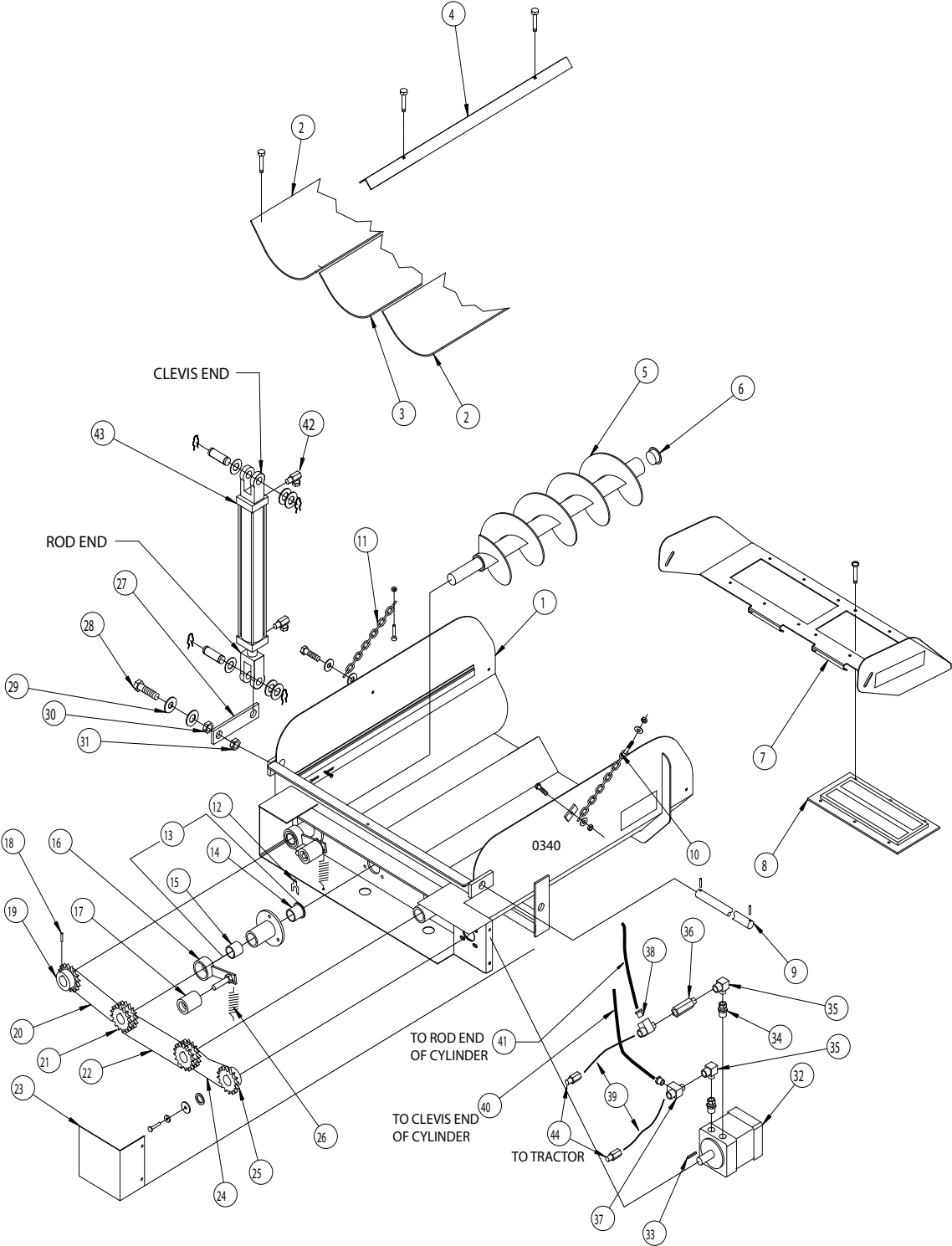
3 Auger Discharge Parts - (After S/N B0001)



3 Auger Discharge Parts - (After S/N B0001)

REF	PART NO	QTY	DESCRIPTION
	104-506	1	Complete Chute Assembly 3'
	104-343	1	Complete Chute Assembly 2'
1	103-780	1	Chute Weldment 3'
	103-758	1	Chute Weldment 2'
2	133-942	2	Plastic Chute Liner,3'- Side; Mtg Hrd:1/4" x 3/4" Truss Head Bolt, Lw,Nut (2ea)
	140-937	2	Plastic Chute Liner,2'- Side; Mtg Hrd:1/4" x 3/4" Truss Head Bolt, Lw,Nut (2ea)
3	133-943	1	Plastic Chute Liner,3'- Center;Mtg Hrd:1/4" x 3/4" Truss Head Bolt,Lw,Nut(2ea)
	140-938	1	Plastic Chute Liner,2'- Center;Mtg Hrd:1/4" x 3/4" Truss Head Bolt,Lw,Nut(2ea)
4	140-897	2	Liner Hold Down;3'- Mtg. Hrd: 1/2" Jam Nut, 5/16"x1 1/2" C-Bolt, Fw,Ln (2ea)
	140-933	2	Liner Hold Down;2'- Mtg. Hrd: 1/2" Jam Nut, 5/16"x1 1/2" C-Bolt, Fw,Ln (2ea)
5	101-736	3	Auger Assembly, 3'
	103-756	3	Auger Assembly, 2'
6	171-186	3	Plastic Cap Plug; #16
7	103-702	1	Tip-off Assembly; Mtg. Hrd: 5/16" x 1" B, Lw, Nut (2ea)
8	171-937	2	Magnet; Mtg. Hrd: 1/4" x 3/4" Truss Head Bolt, Fw, Lw, Nut (6ea)
9	136-444	1	Chute Pivot Rod, 7/8" x 39 1/2"; Mtg. Hrd: 170-115 Cotter Pin (2ea)
10	103-918	1	Chute Restraint Chain Assy
			Mtg Hrd: 5/16" x 1" Truss Head B,Fw,Lw,Nut, 3/8" Fw, Ln
11	141-608	1	Chain; 5/0 Coil x 27 Link; Mtg. Hrd: 5/16" x 1" B, Lw, Nut and 5/16" x 1" Truss Head Bolt, Fw, (3ea), Fln (1ea)
12	171-265	A/R	Shim; .017" Thick
13	101-227	3	Auger Bearing Assembly; 3/8" x 1 1/4" Bolt, Lw, Nut (3ea)
14	171-260	1	Bronze Bushing ;1 3/8" ID Flanged
15	171-259	1	Bronze Bushing; 1 3/8" ID
16	101-231	2	Chain Tightener Arm
17	134-395	2	Poly Block, 2" x 2 1/2"; Mtg Hrd: 5/8" Lw & Jam Nut
18	171-414	3	Roll Pin; 5/16" x 2 1/2"
19	140-902	1	Sprocket; 50-B-15, 1 3/8" Bore; Mtg. Hrd: 1/4" x 2 1/2" Roll Pin
20	174-886	1	Roller Chain; 50-1-54 Pitch
21	134-390	2	Sprocket; 50-2R-18 1 3/8" Bore; Mtg. Hrd: 1/4" x 2 1/2" Roll Pin
22	171-932	1	Roller Chain; 50-1-56 Pitch
23	140-896	1	Motor Drive Shield; Mtg. Hrd: 5/16" x 3/4" Bolt, Lw, Nut (2ea)
24	171-008	1	Roller Chain; 50-1-47 Pitch
25	134-389	1	Sprocket; 50-B-18, 1" Bore 1/4" Kw (including: 170-254 set screw)
26	170-110	2	Extension Spring
27	133-952	1	Chute Cylinder Linkage Bar; Mtg. Hrd: 170-074 Hair Pin Clip (2)
28	173-021	1	Bolt, 1" X 3 1/2" Hex Head
29	170-122	2	Spacer Washer; 1", SAE Flat
30	174-927	1	Nut, 1" Hex Jam
31	174-928	1	Nut, 1" Hex Lock
32	171-666	1	Hydraulic Motor; 12cu. in. (Seal Kit# 171-257) Mtg Hrd: 3/8"x7/8" B,Lw (4ea)
33	171-883	1	Key; 1/4" x 1/4" x 1"
34	175-711	1	Check Valve; 10OM x 1OF
35	175-699	2	Straight Adapter; 10OM x 08JM
36	175-709	2	Tee Adatper; 08JFS x 08JM x 08JM
37	175-702	4	90° Adapter; 08JFS x 08JM
38	175-687	2	Adapter, Quick Coupler
39	175-700	1	Straight Adapter; 08OM x 08JM
40	143-415	1	Straight Adapter; 08OM x 08JM .06
41	175-918	2	Hydraulic Hose; 1/2" X 168"
42	175-917	1	Hydraulic Hose; 3/8" X 82"
43	176-660	1	Hydraulic Hose; 3/8" X 64"

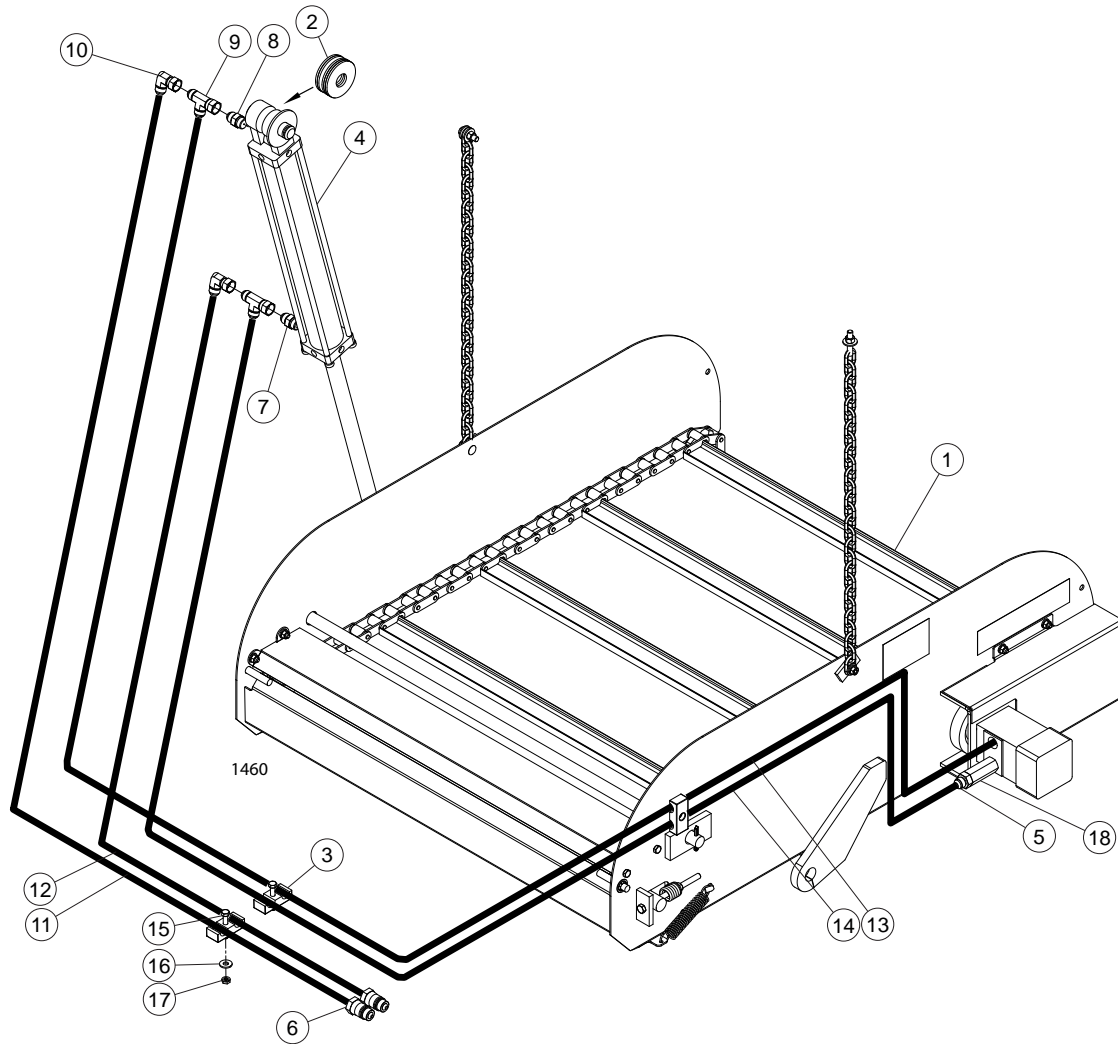
3 Auger Discharge Parts - (Before S/N B0001)



3 Auger Discharge Parts - (Before S/N B0001)

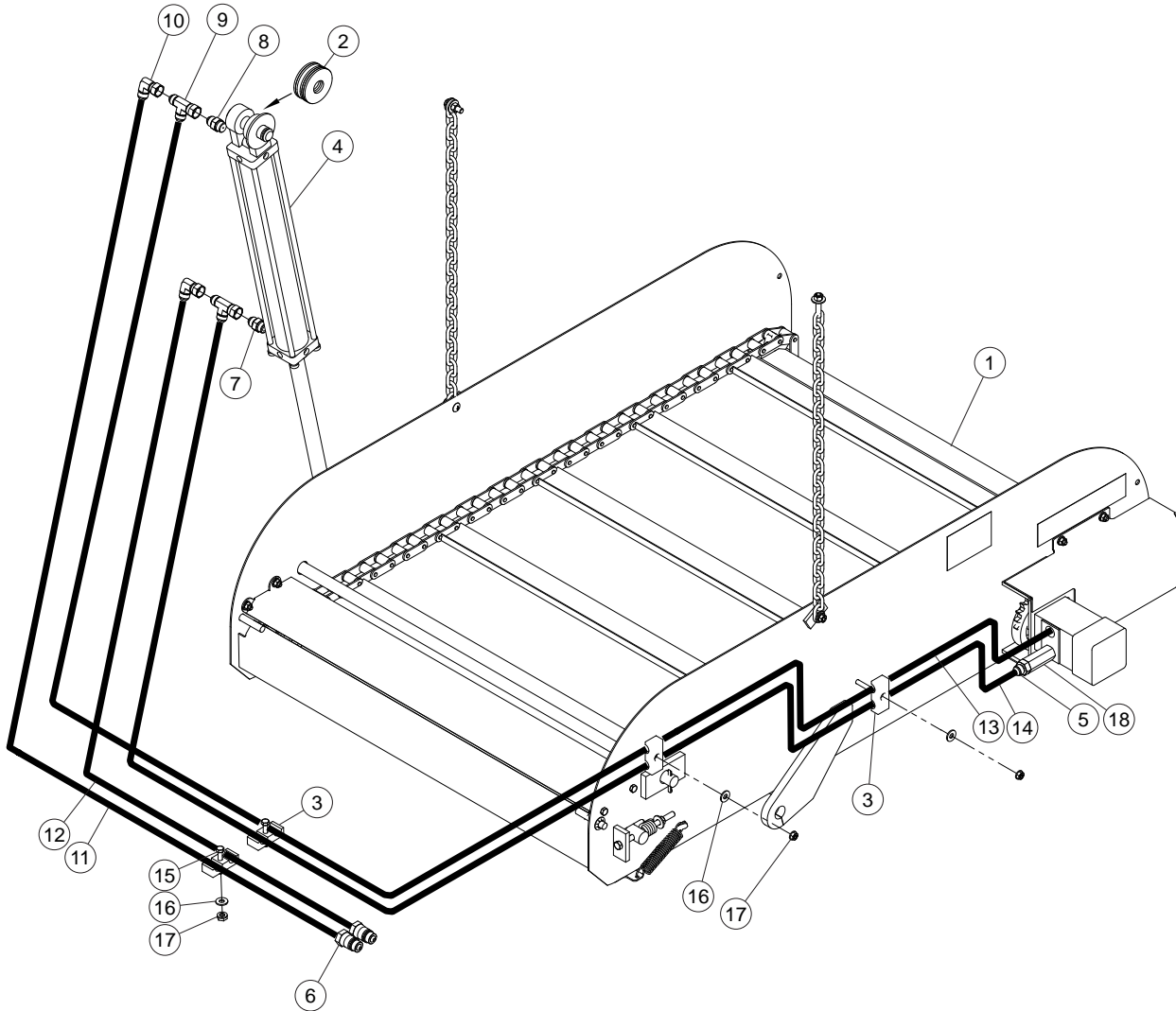
REF	PART NO	QTY	DESCRIPTION
	103-781	1	Complete Chute Assembly 3'
	103-755	1	Complete Chute Assembly 2'
1	103-780	1	Chute Weldment 3'
	103-758	1	Chute Weldment 2'
2	133-942	2	Plastic Chute Liner,3'- Side; Mtg Hrd:1/4" x 3/4" Truss Head Bolt, Lw,Nut (2ea)
	140-937	2	Plastic Chute Liner,2'- Side; Mtg Hrd:1/4" x 3/4" Truss Head Bolt, Lw,Nut (2ea)
3	133-943	1	Plastic Chute Liner,3'- Center;Mtg Hrd:1/4" x 3/4" Truss Head Bolt,Lw,Nut(2ea)
	140-938	1	Plastic Chute Liner,2' -Center;Mtg Hrd:1/4" x 3/4" Truss Head Bolt,Lw,Nut(2ea)
4	140-897	2	Liner Hold Down;3'- Mtg. Hrd: 1/2" Jam Nut, 5/16"x1 1/2" C-Bolt, Fw,Ln (2ea)
	140-933	2	Liner Hold Down;2'- Mtg. Hrd: 1/2" Jam Nut, 5/16"x1 1/2" C-Bolt, Fw,Ln (2ea)
5	101-736	3	Auger Assembly, 3'
	103-756	3	Auger Assembly, 2'
6	171-186	3	Plastic Cap Plug; #16
7	103-702	1	Tip-off Assembly; Mtg. Hrd: 5/16" x 1" B, Lw, Nut (2ea)
8	171-937	2	Magnet; Mtg. Hrd: 1/4" x 3/4" Truss Head Bolt, Fw, Lw, Nut (6ea)
9	136-444	1	Chute Pivot Rod, 7/8" x 39 1/2"; Mtg. Hrd: 170-115 Cotter Pin (2ea)
10	103-918	1	Chute Restraint Chain Assy
			Mtg Hrd: 5/16" x 1" Truss Head B,Fw,Lw,Nut, 3/8" Fw, Ln
11	141-608	1	Chain; 5/0 Coil x 27 Link; Mtg. Hrd: 5/16" x 1" B, Lw, Nut and 5/16" x 1" Truss Head Bolt, Fw, (3ea), Fln (1ea)
12	171-265	A/R	Shim; .017" Thick
13	101-227	3	Auger Bearing Assembly; 3/8" x 1 1/4" Bolt, Lw, Nut (3ea)
14	171-260	1	Bronze Bushing ;1 3/8" ID Flanged
15	171-259	1	Bronze Bushing; 1 3/8" ID
16	101-231	2	Chain Tightener Arm
17	134-395	2	Poly Block, 2" x 2 1/2"; Mtg Hrd: 5/8" Lw & Jam Nut
18	171-414	3	Roll Pin; 5/16" x 2 1/2"
19	140-902	1	Sprocket; 50-B-15, 1 3/8" Bore; Mtg. Hrd: 1/4" x 2 1/2" Roll Pin
20	174-886	1	Roller Chain; 50-1-54 Pitch
21	134-390	2	Sprocket; 50-2R-18 1 3/8" Bore; Mtg. Hrd: 1/4" x 2 1/2" Roll Pin
22	171-932	1	Roller Chain; 50-1-56 Pitch
23	140-896	1	Motor Drive Shield; Mtg. Hrd: 5/16" x 3/4" Bolt, Lw, Nut (2ea)
24	171-008	1	Roller Chain; 50-1-47 Pitch
25	134-389	1	Sprocket; 50-B-18, 1" Bore 1/4" Kw (including: 170-254 set screw)
26	170-110	2	Extension Spring
27	133-952	1	Chute Cylinder Linkage Bar; Mtg. Hrd: 170-074 Hair Pin Clip (2)
28	173-021	1	Bolt, 1" X 3 1/2" Hex Head
29	170-122	2	Spacer Washer; 1", SAE Flat
30	174-927	1	Nut, 1" Hex Jam
31	174-928	1	Nut, 1" Hex Lock
32	171-666	1	Hydraulic Motor; 12cu. in. (Seal Kit# 171-257) Mtg Hrd: 3/8"x7/8" B,Lw (4ea)
33	171-883	1	Key; 1/4" x 1/4" x 1"
34	171-668	2	Straight Thread Adapter; 7/8" M-ORB x 1/2" F-NPSM Sw.
35	171-136	2	Street Elbow; 1/2" x 90°
36	171-151	1	Line Check Valve; 1/2"
37	170-859	2	Adapter,Tee: 1/2" NPTF M x 1/2" NPTF Fx 1/2" NPTF
38	170-235	2	Adapter, straight, 1/2" NPTF M x 3/8" NPTF F
39	171-330	2	Hydraulic Hose; 1/2" X 168"
40	171-427	1	Hydraulic Hose; 1/4" X 82"
41	171-940	1	Hydraulic Hose; 1/4" X 64"
42	171-030	4	Swivel Connector; 90°
43	173-220	1	Cylinder; 2" dia x 18" (seal kit 170-075)
44	175-536	2	Pioneer Quick Coupler

3' Chain and Slat Chute (Option)



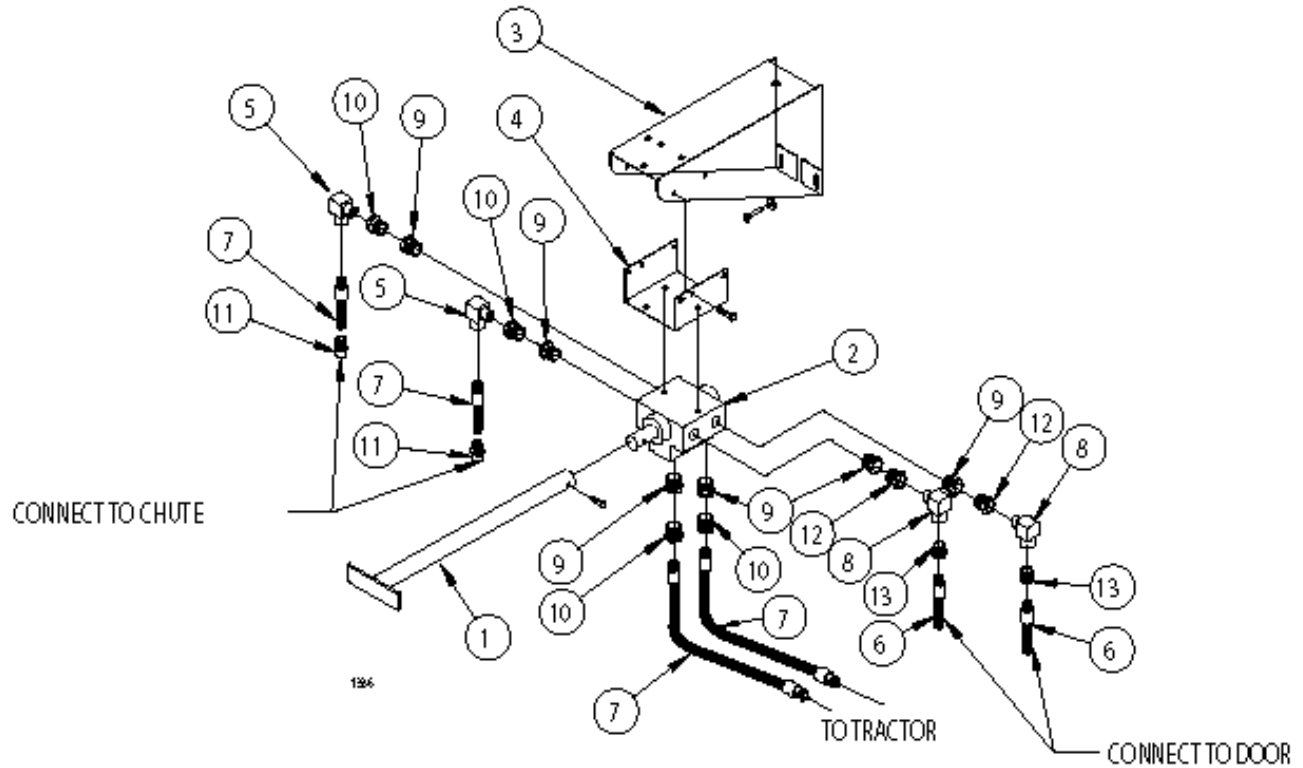
REF	PART NO	QTY	DESCRIPTION
1	104-344	1	Assy, C & S Chute 3'
2	170-122	10	Washer, flat, 1.00
3	174-771	3	Clamp, Tube, .75 ID Dual
4	175-685	1	Cylinder, 2.00 x 18.00 ORB
5	175-711	1	Valve, Check, 100M x 100F
6	175-687	2	Adapter, Quick Coupler
7	175-700	1	Adapter, Str, 08OM x 08JM
8	143-415	1	Adapter, Str 08OM x 08JM .060"
9	175-709	2	Adapter, Str 08JFS x 08JM x 08 JM
10	175-702	2	Adapter, 90, 08Jfs x 08JM
11	175-704	1	Hose, Assy, .50 x 212.00 100R1
12	175-705	1	Hose, Assy, .50 x 197.00 100R1
13	176-325	1	Hose, Assy, .50 x 133.00 100R1
14	176-348	1	Hose, Assy, .50 x 108.00 100R1
15	172-987	3	Screw, HexHd, .31 x 2.00 NC GR5
16	170-127	3	Washer, Flat, .31 USS
17	170-028	3	Nut, Hex, .31 NC Flange Lock
18	175-699	1	Adapter, Str, 100M x 08JM

4' Chain and Slat Chute (Option)



REF	PART NO	QTY	DESCRIPTION
1	104-353	1	Assy, C & S Chute 3'
2	170-122	10	Washer, flat, 1.00
3	174-771	4	Clamp, Tube, .75 ID Dual
4	175-685	1	Cylinder, 2.00 x 18.00 ORB
5	175-711	1	Valve, Check, 100M x 100F
6	175-687	2	Adapter, Quick Coupler
7	175-700	1	Adapter, Str, 08OM x 08JM
8	143-415	1	Adapter, Str 08OM x 08JM .060"
9	175-709	2	Adapter, Str 08JFS x 08JM x 08 JM
10	175-702	2	Adapter, 90, 08JFS x 08JM
11	175-704	1	Hose, Assy, .50 x 212.00 100R1
12	175-705	1	Hose, Assy, .50 x 197.00 100R1
13	176-325	1	Hose, Assy, .50 x 133.00 100R1
14	176-348	1	Hose, Assy, .50 x 108.00 100R1
15	172-987	4	Screw, HexHd, .31 x 2.00 NC GR5
16	170-127	4	Washer, Flat, .31 USS
17	170-028	4	Nut, Hex, .31 NC Flange Lock
18	175-699	1	Adapter, Str, 100M x 08JM

Selector Valve - Power Chute Option (After S/N B0001)

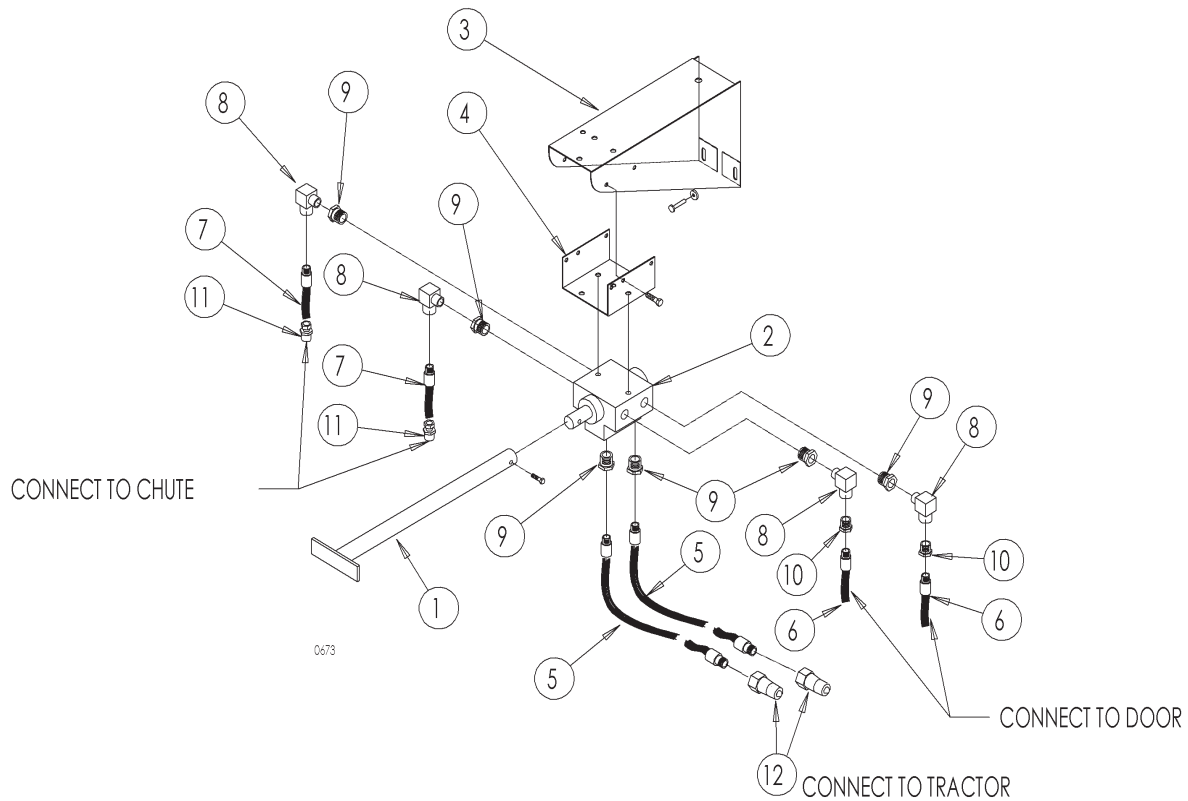


REF	PART NO	QTY	DESCRIPTION
1	101-791	1	Control Handle Assy; Mtg Hrd: 1/4" x 1-1/2" Bolt & LN
2	101-891	1	Selector Valve Assy (Seal Kit #172-784) Mtg Hrd: 3/8" x 3" B, FW, LW, Nut (2 ea)
3	136-726	1	Selector Valve Mount; Mtg Hrd: 5/16" x 3/4" Bolt, FW, LW, Nut (2 ea)
4	134-136	1	Mounting Bracket; Mtg Hrd: 5/16" x 1" Bolt, LW, Nut (4 ea)
5	175-702	2	90 Degree Adapter, 08JFS x 08JM
6	175-909	2	Hyd Hose; 1/4" x 118" Long, To Door
7	176-348	4	Hyd Hose; 1/2" x 108" Long, To Chute
8	175-673	2	90 Degree Adapter, 06JFS x 06JM
9	171-430	6	Connector; Reducer 3/4" To 1/2"
10	176-347	4	Adapter, Straight, 08 NPT x 08 JM
11	175-700	2	Adapter, Straight, 08OM x 08JM
12	176-346	2	Adapter, Straight, 08PM x 06JM
13	170-235	2	Connector; Reducer 1/2" To 3/8"

FIELD INSTALLATION NOTE:

For field installation use the above parts except (1) 171-426, (1) 170-465, (1) 171-998 & (2) 170-235.

Selector Valve - Power Chute Option (Before S/N B0001)

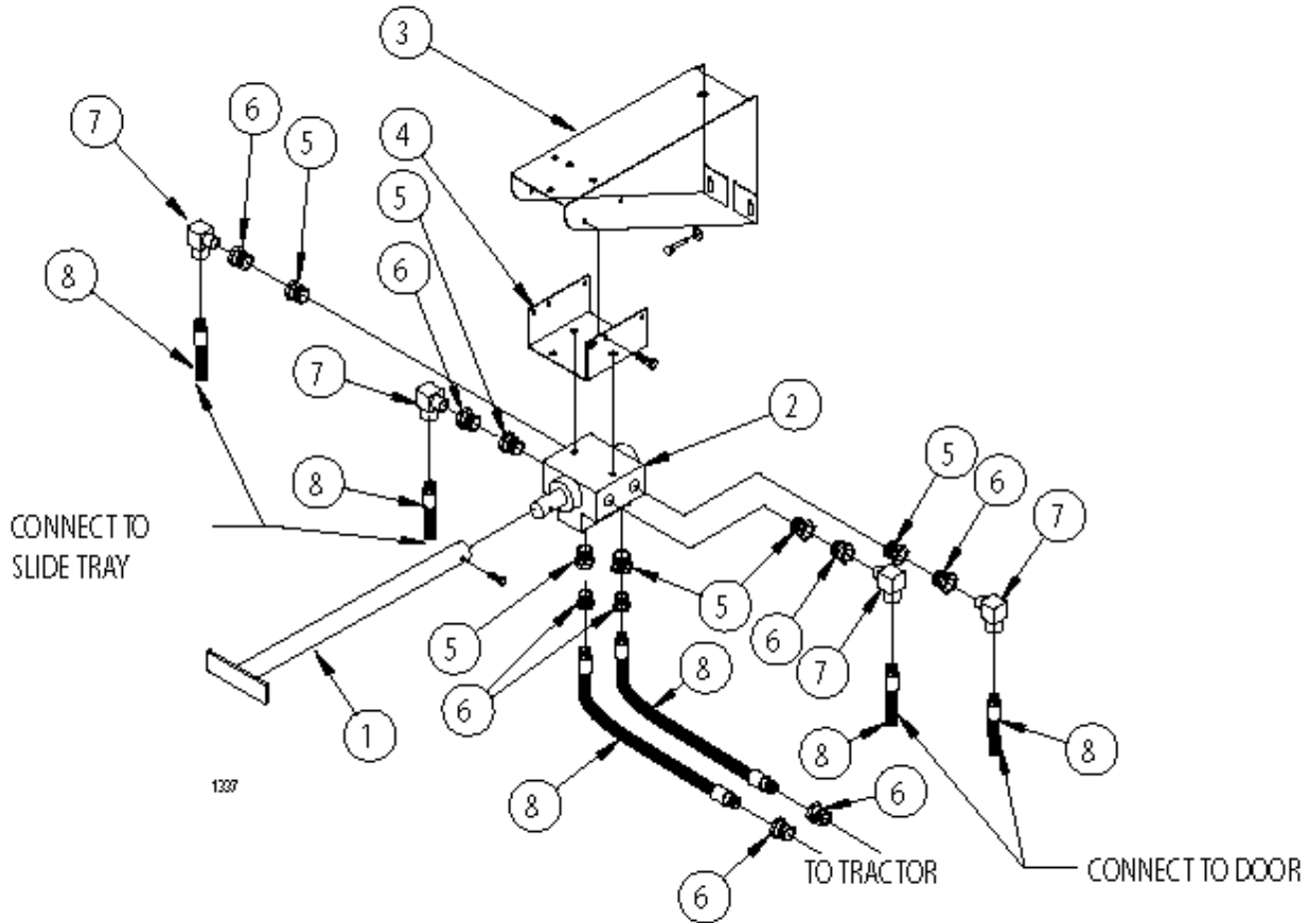


REF	PART NO	QTY	DESCRIPTION
1	101-791	1	Control Handle Assy; Mtg Hrd: 1/4" x 1-1/2" Bolt & LN
2	101-891	1	Selector Valve Assy (Seal Kit #172-784) Mtg Hrd: 3/8" x 3" B, FW, LW, Nut (2 ea)
3	136-726	1	Selector Valve Mount; Mtg Hrd; 5/16" x 3/4" Bolt, FW, LW, Nut (2 ea)
4	134-136	1	Mounting Bracket; Mtg Hrd; 5/16" x 1" Bolt, LW, Nut (4 ea)
5	171-426	2	Hyd Hose; 1/2" x 93" Long 1/2" Ends, To Tractor
6	171-998	2	Hyd Hose; 1/4" x 118" Long 3/8" Ends, To Door
7	171-189	2	Hyd Hose; 1/2" x 108" Long 1/2" Ends, To Chute
8	171-136	4	Connector; Elbow 1/2" - 90 Degree
9	171-430	6	Connector; Reducer 3/4" To 1/2"
10	170-235	2	Connector; Reducer 1/2" To 3/8"
11	170-513	2	Connector; Swivel 1/2" Straight
12	175-536	2	Pioneer Quick Coupler

FIELD INSTALLATION NOTE:

For field installation use the above parts except (1) 171-426, (1) 170-465, (1) 171-998 & (2) 170-235.

Selector Valve - Slide Tray Parts (S/N B0001 And After)

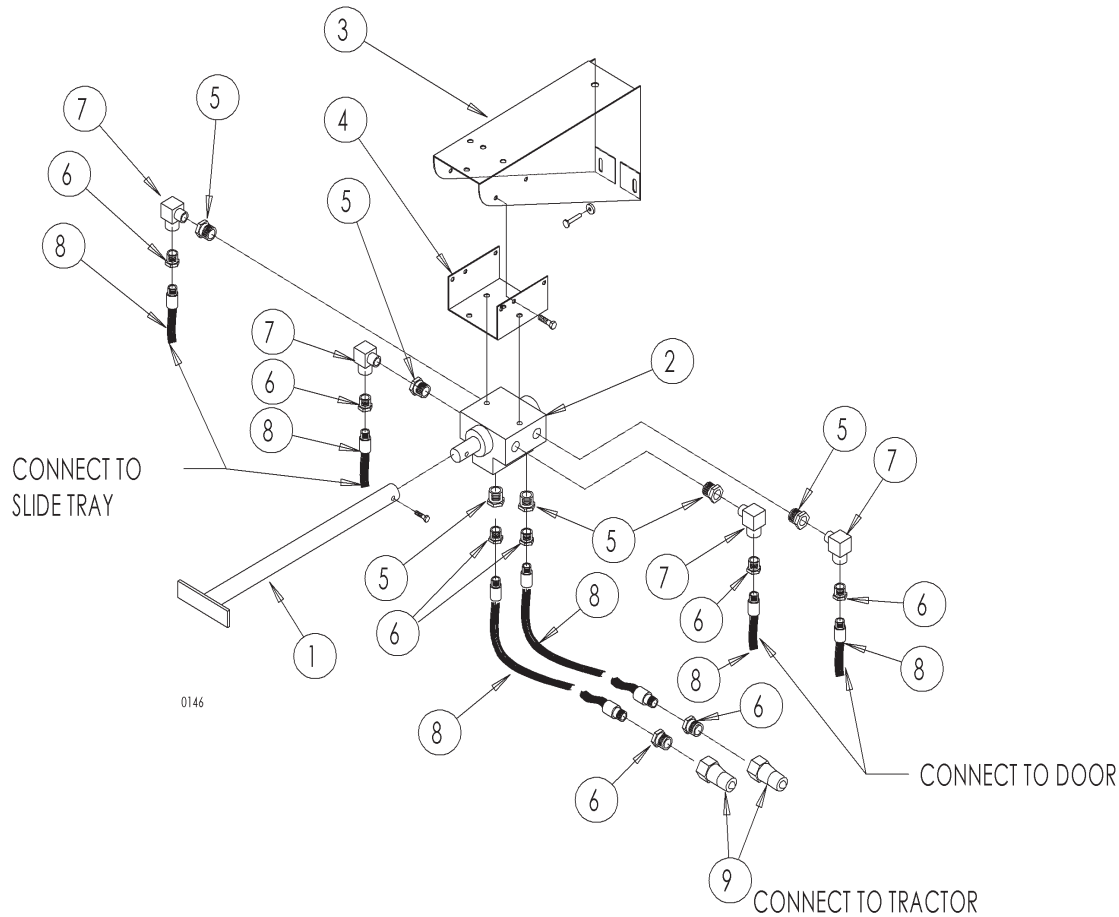


REF	PART NO	QTY	DESCRIPTION
1	101-791	1	Control Handle Assy Mtg Hrd: 1/4" x 1 1/2" Bolt & LN
2	101-891	1	Selector Valve Assy (Seal Kit #172-784) Mtg Hrd: 3/8" x 3" B, FW, LW, & Nut (2ea)
3	136-726	1	Selector Valve Mount; Mtg Hrd: 5/16" x 1" Bolt, FW, LW, Nut (2 ea)
4	134-136	1	Mounting Bracket; Mtg Hrd: 5/16" x 3/4" Bolt, LW, Nut (4 ea)
5	171-430	6	Connector; Reducer 3/4" To 1/2"
6	176-346	6	Adapter, Straight, 08PM x 06JM
7	175-673	4	90 Degree Adapter, 06JFS x 06JM
8	175-909	6	Hyd Hose; 1/4" x 118" Long

FIELD INSTALLATION NOTE:

For field installation use the above parts except (4) 170-235 & (4) 171-998.

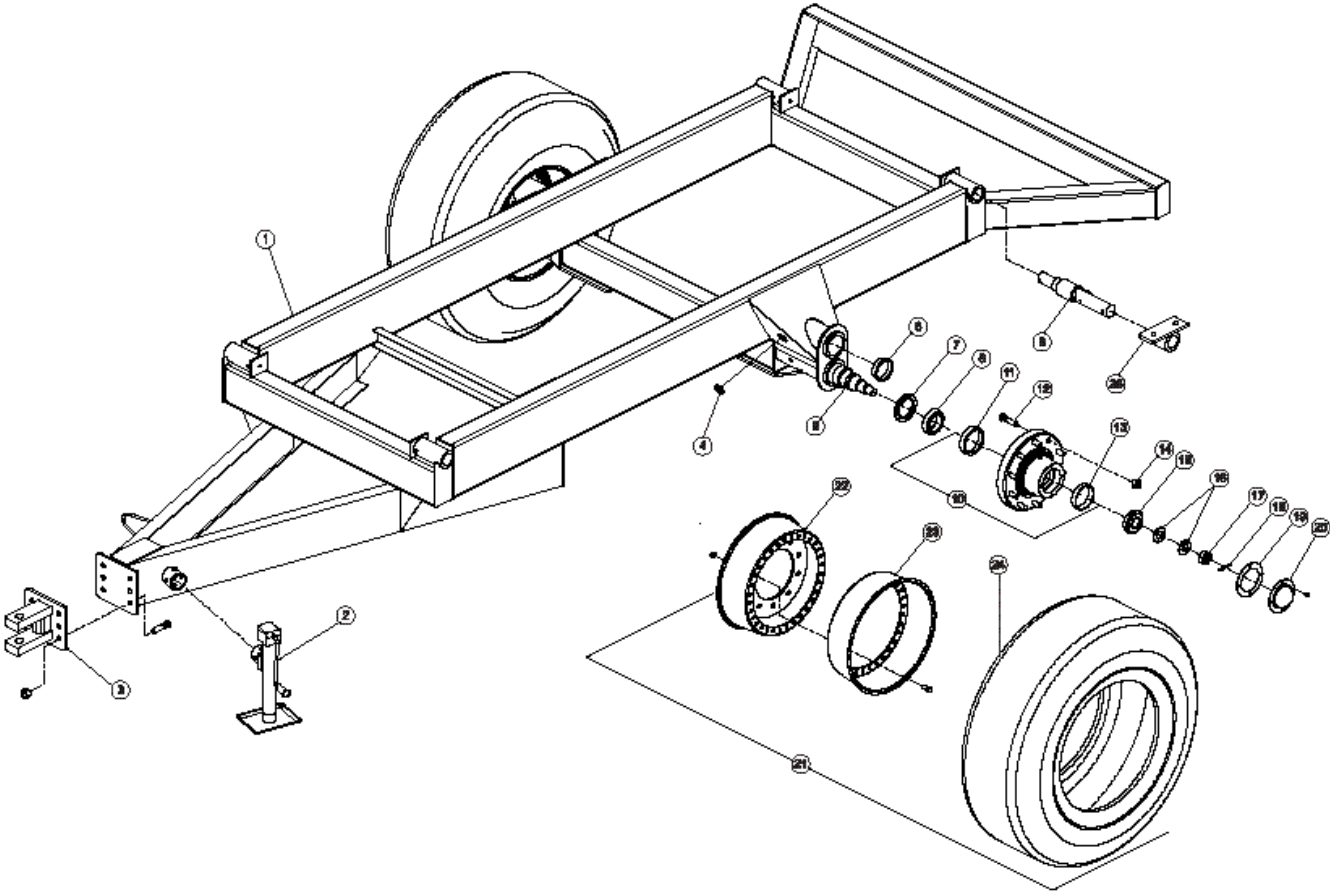
Selector Valve - Slide Tray Parts (Before S/N B0001)



REF	PART NO	QTY	DESCRIPTION
1	101-791	1	Control Handle Assy Mtg Hrd: 1/4" x 1 1/2" Bolt & LN
2	101-891	1	Selector Valve Assy (Seal Kit #172-784) Mtg Hrd: 3/8" x 3" B, FW, LW, & Nut (2ea)
3	136-726	1	Selector Valve Mount; Mtg Hrd; 5/16" x 1" Bolt, FW, LW, Nut (2 ea)
4	134-136	1	Mounting Bracket; Mtg Hrd; 5/16" x 3/4" Bolt, LW, Nut (4 ea)
5	171-430	6	Connector; Reducer 3/4" To 1/2"
6	170-235	6	Connector; Reducer 1/2" To 3/8"
7	171-136	4	Connector; Elbow 1/2" - 90 Degree
8	171-998	6	Hyd Hose; 1/4" x 118" Long 3/8" Ends
9	175-536	2	Pioneer Quick Coupler

FIELD INSTALLATION NOTE:
 For field installation use the above parts except (4) 170-235 & (4) 171-998.

Undercarriage Parts (S/N B0001 And After)

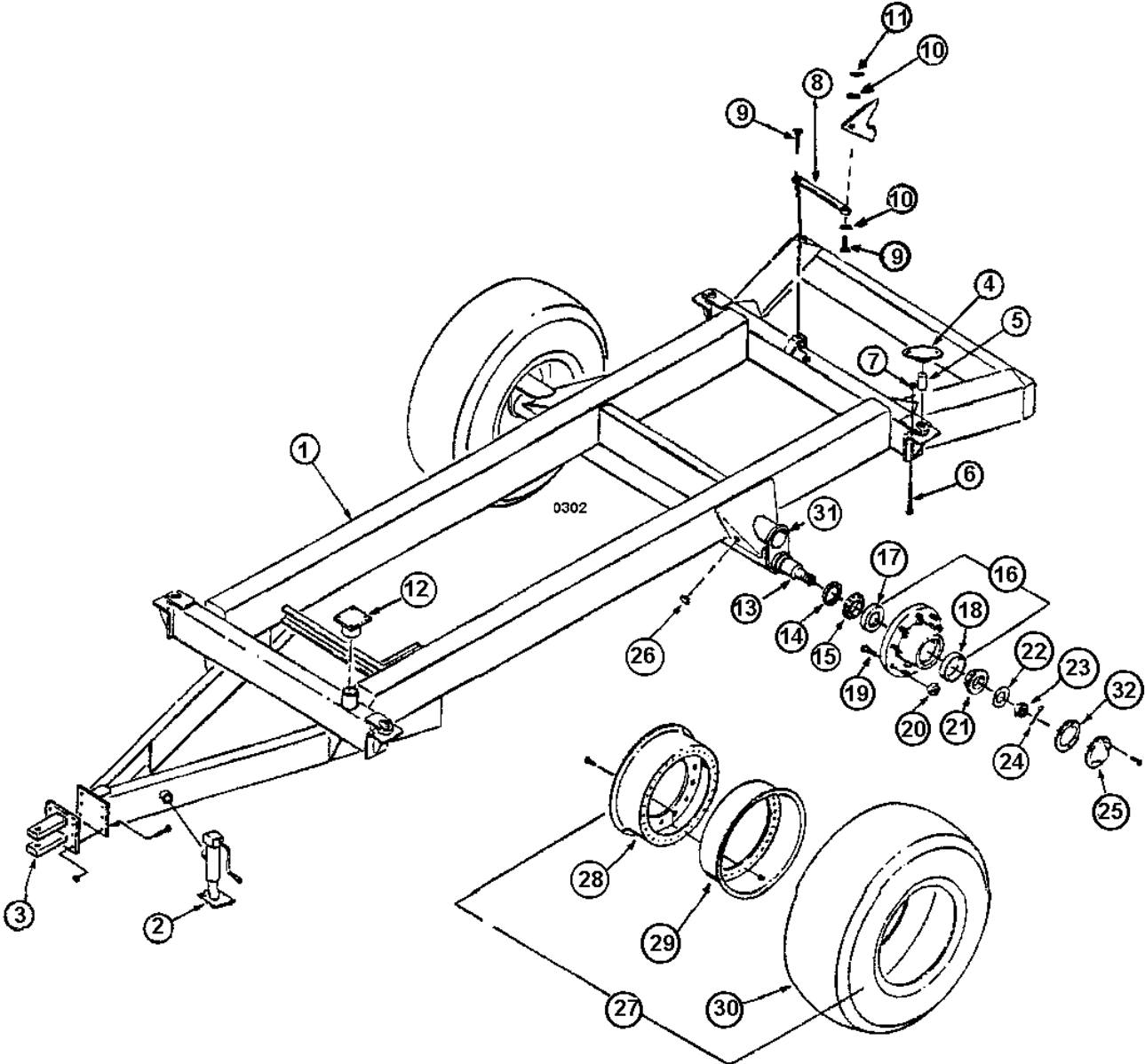


Undercarriage Parts (S/N B0001 And After)

REF	PART NO	QTY	DESCRIPTION
1	102-426	1	Undercarriage Weldment (3136 only)
	102-412	1	Undercarriage Weldment (3142 only)
2	171-610	1	Jackstand (refer to jackstand parts pages for parts breakdown)
3	102-307	1	Clevis Hitch; Mtg Hrd: 3/4" x 2" Bolt, (grade8) Ln, (grade 8)(4ea)
4	172-819	4	Plug; Plastic Cap
5	136-373	2	Spindle, 3 3/8" X 17 3/4"; Mtg Hrd: 1/2" x 5" Bolt (grade 5)
6	173-313	2	Plug; Plastic Cap
7	172-362	2	Grease Seal (C/R 33772)
8	172-360	2	Bearing Cone; (inner) 2.75 (Timken #33275)
9	172-138*	4	Weigh Bar; 2 1/8" (J-Star-Black Finish); Mtg Hrd: 5/8" x 1 3/4" Bolt (grade 5), Fw, LN (2 ea)
	173-230*	4	Weigh Bar; 2 1/8" (Weigh-Tronix-White Finish); Mtg Hrd: 5/8" x 1 3/4" Bolt (grade 5), Fw, LN (2 ea)
	133-976	4	Dummy Weigh Bar Mount (For Units Without Scales) Mtg Hrd To Spool: 3/8" x 2 1/2" Bolt & LN (ea) Mtg Hrd To Endstop: 3/8" x 3 1/2" Bolt & LN
10	172-396	2	Wheel Hub Assembly; 10 Bolt
11	172-361	1	Bearing Race (inner) 4.63 (Timken #33462)
12	174-784	10	Wheel Stud; 3/4"
13	170-922	1	Bearing Race (outer) 4.25 (Timken #453A)
14	170-920	10	Wheel Nut; 3/4" NF
15	170-921	2	Bearing Cone; (outer) 1.75 (Timken #460)
16	170-928	2	Spindle Washer; 1-3/4" (heavy)
17	170-927	2	Spindle Nut; 1-1/4" NF (slotted)
18	170-056	2	Cotter Pin; 1/4" x 2"
19	176-936	2	Hubcap Gasket
20	170-926	2	Hub Cap; Mtg Hrd: 5/16" x 3/4" Bolt (4ea)
21	173-300	2	Wheel and Tire Assembly (optional); 40 x 14.5 - 10 hole
22	173-301	1	Wheel Rim (inner)
23	173-302	1	Wheel Rim (outer)
24	173-926	1	Tire, 40 x 14.5 Aircraft
	173-917	1	Inner Tube; H40 X 14.5
	173-916	1	Tire Liner Flap; H40 X 14.5
	171-616	2	Wheel Rim; 10 Bolt (optional) 22.5 X 11.25
	171-653	2	Tire; 385-65R 22.5 Duplex Recap
	174-577	2	Inner Tube; 15R/16.5R/18R x 22.5
25	101-742	4	Weigh Bar Mount Spool; Mtg Hrd: To Unit: 5/8" x 1 3/4" Bolt, FW & LN (2 ea)

* All (4) weigh bars should be the same type to properly function and will work with either the Digi-Star or Weigh-tronix indicator.

Undercarriage Parts (Before S/N B0001)

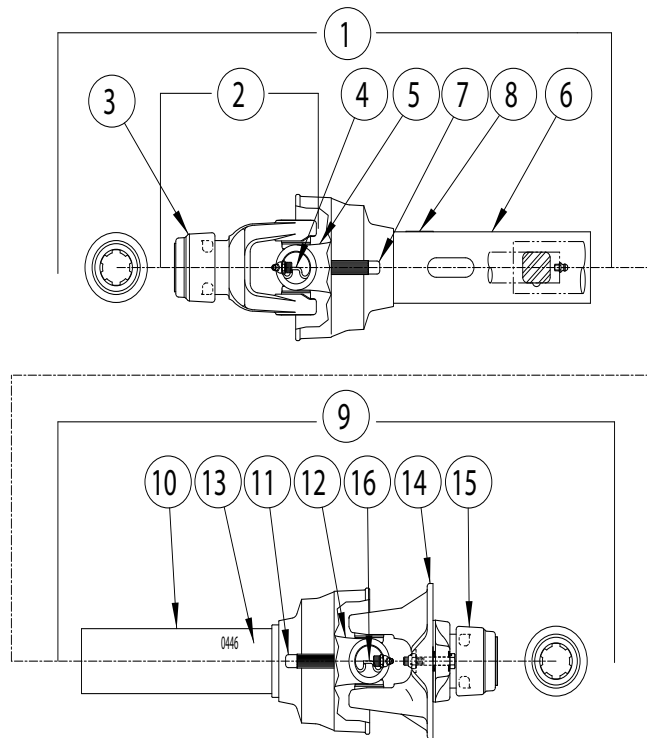


Undercarriage Parts - (Before S/N B0001)

REF	PART NO	QTY	DESCRIPTION
1	102-426	1	Undercarriage Weldment (3136 only)
	102-412	1	Undercarriage Weldment (3142 only)
2	171-610	1	Jackstand (refer to jackstand parts pages for parts breakdown)
3	102-307	1	Clevis Hitch; Mtg Hrd: 3/4" x 2" Bolt, (grade8) Ln, (grade 8)(4ea)
4	102-325*	4	Load Cell Mount; Mtg Hrd: 1/2" x 3/4" Bolt, Fw(2ea), Lw, Nut
5	175-256*	4	Load Cell Weigh-Tronix 3.0 MV (silver /grey color)
	173-034	4	Load Cell Digi-Star 3.0 MV (black color)
	137-132	8	Shock Pad (2 required for each Load Cell)
	135-961	4	Dummy Load Cell
6	173-019	4	Retaining Bolt; 5/8" x 7 1/2" (grade5) and (170-006) Flat Washer
7	170-013	4	Lock Nut; 5/8" (grade 5) and (170-006) Flat Washer
8	102-326	1	Check Arm
9	171-899	2	Bolt; 3/4" x 3 1/2" (grade 8)
10	170-015	2	Flat Washer; 3/4"
11	171-900	2	Lock Nut; 3/4" (grade 8)
12	102-417	1	Check Bearing; Mtg Hrd:1/2" x 1 3/4" Bolt, Fw(2ea), Ln
13	136-373	2	Spindle, 3 3/8" X 17 3/4" ; Mtg Hrd: 1/2" x 5" Bolt (grade 5)
14	172-362	2	Grease Seal (C/R 33772)
15	172-360	2	Bearing Cone; (inner) 2.75 (Timken #33275)
16	172-396	2	Wheel Hub Assembly; 10 Bolt
17	172-361	1	Bearing Race (inner) 4.63 (Timken #33462)
18	170-922	1	Bearing Race (outer) 4.25 (Timken #453A)
19	174-784	10	Wheel Stud; 3/4"
20	170-920	10	Wheel Nut; 3/4" NF
21	170-921	2	Bearing Cone; (outer) 1.75 (Timken #460)
22	170-928	2	Spindle Washer; 1-3/4" (heavy)
23	170-927	2	Spindle Nut; 1-1/4" NF (slotted)
24	170-056	2	Cotter Pin; 1/4" x 2"
25	170-926	2	Hub Cap; Mtg Hrd: 5/16" x 3/4" Bolt (4ea)
26	172-819	4	Plug; Plastic Cap
27	173-300	2	Wheel and Tire Assembly (optional); 40 x 14.5 - 10 hole
28	173-301	1	Wheel Rim (inner)
29	173-302	1	Wheel Rim (outer)
30	173-926	1	Tire, 40 x 14.5 Aircraft
	173-917	1	Inner Tube; H40 X 14.5
	173-916	1	Tire Liner Flap; H40 X 14.5
	171-616	2	Wheel Rim; 10 Bolt (optional) 22.5 X 11.25
	171-653	2	Tire; 385-65R 22.5 Duplex Recap
	174-577	2	Inner Tube; 15R/16.5R/18R x 22.5
31	173-313	2	Plug; Plastic Cap

* All (4) load cells should be Weigh-tronix or Digi-Star to properly function and will work with either the Digi-Star or Weigh-Tronix Indicator.

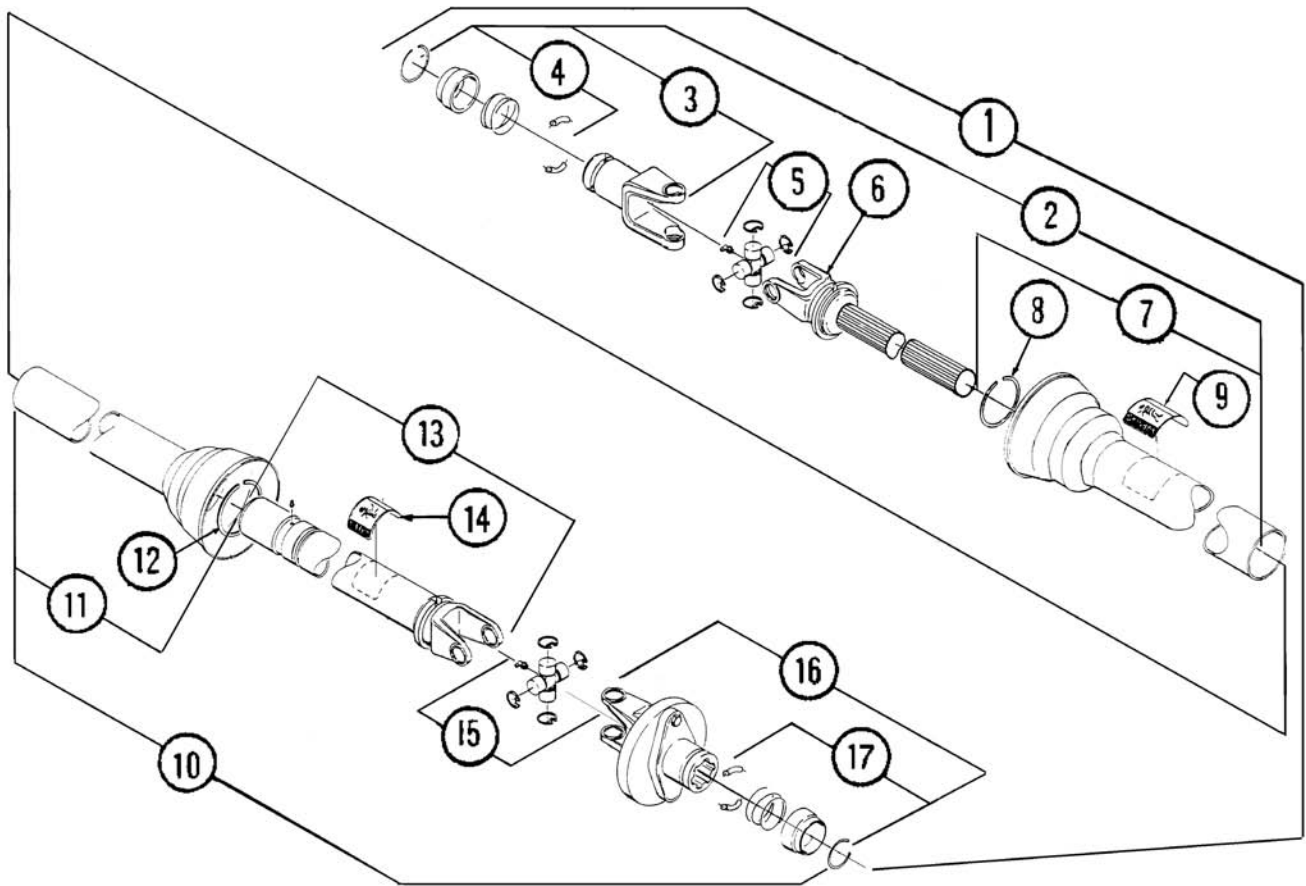
PTO Driveline Parts (Non-CV) - 540 RPM - 6 Spline - 1 3/8" Yoke



When ordering PTO driveline parts, please specify if the half shaft is square or splined.

REF	PART NO	QTY	DESCRIPTION
	173-309	1	Driveline Complete
1	173-316	1	Joint and Shaft Half with Guard
2	171-542	1	Yoke Assembly
3	171-544	1	Safety Slide Lock Repair Kit
4	170-776	1	Cross and Bearing Kit
5	173-318	1	Yoke and Shaft
6	173-320	1	Outer Guard
7	170-220	1	Nylon Repair Kit
8	171-550	1	Safety Decal
9	172-989	1	Joint and Tube Half with Guard
10	172-847	1	Inner Guard
11	170-220	1	Nylon Repair Kit
12	172-845	1	Yoke Tube and Slip Sleeve
13	171-799	1	Safety Decal
14	172-924	1	Ball Shear Clutch
	172-987	1	Shear Bolt; 5/16" x 2" (grade 5)
	170-028	1	Lock Nut; 5/16" (grade 5)
15	171-544	1	Safety Slide Lock Repair Kit
16	170-776	1	Cross and Bearing Kit

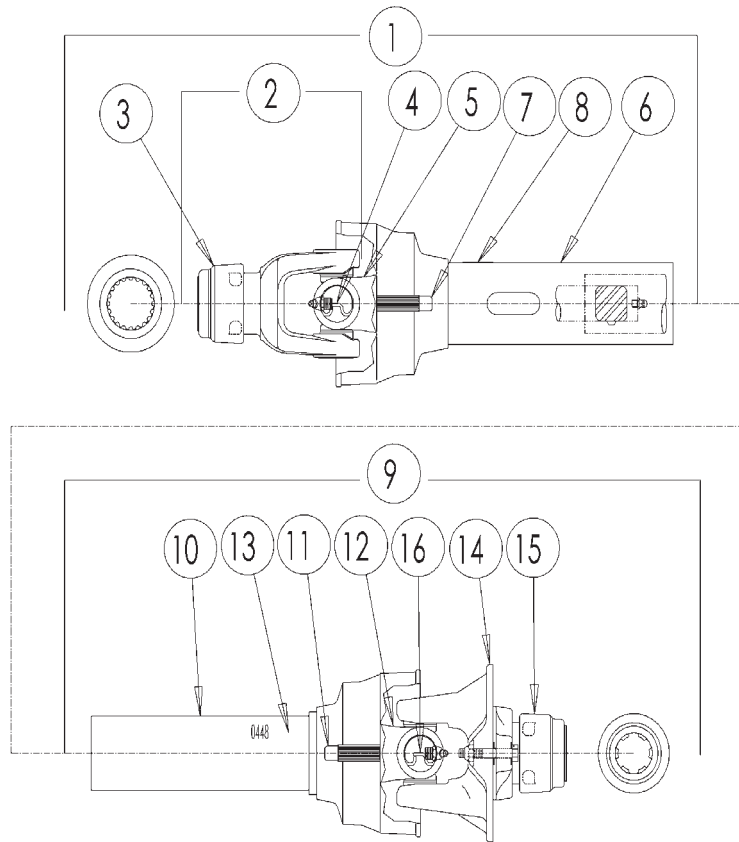
PTO Driveline Parts (Non-CV) - 540 RPM - 6 Spline - 1 3/8" Yoke



When ordering PTO driveline parts, please specify if the half shaft is square or splined.

REF	PART NUMBER	QTY	DESCRIPTION
1	175-598	1	Driveline Complete
2	175-649	1	Joint and Shaft Half with Guard
3	171-542	1	Yoke Assembly
4	171-544	1	Safety Slide Lock Repair Kit
5	170-776	1	Cross and Bearing Kit
6	174-683	1	Yoke and Shaft
7	173-320	1	Outer Guard
8	170-220	1	Nylon Repair Kit
9	171-550	1	Safety Decal
10	174-690	1	Joint and Tube Half with Guard
11	172-847	1	Inner Guard
12	170-220	1	Nylon Repair Kit
13	173-426	1	Yoke Tube and Slip Sleeve
14	171-799	1	Safety Decal
15	170-776	1	Cross and Bearing Kit
16	172-924	1	Ball Shear Clutch
	172-987	1	Shear Bolt; 5/16"-18 x 2.00"LG (grade5)
	170-137	1	Lock Nut; 5/16"-18 (grade 5)
17	171-544	1	Safety Slide Lock Repair Kit

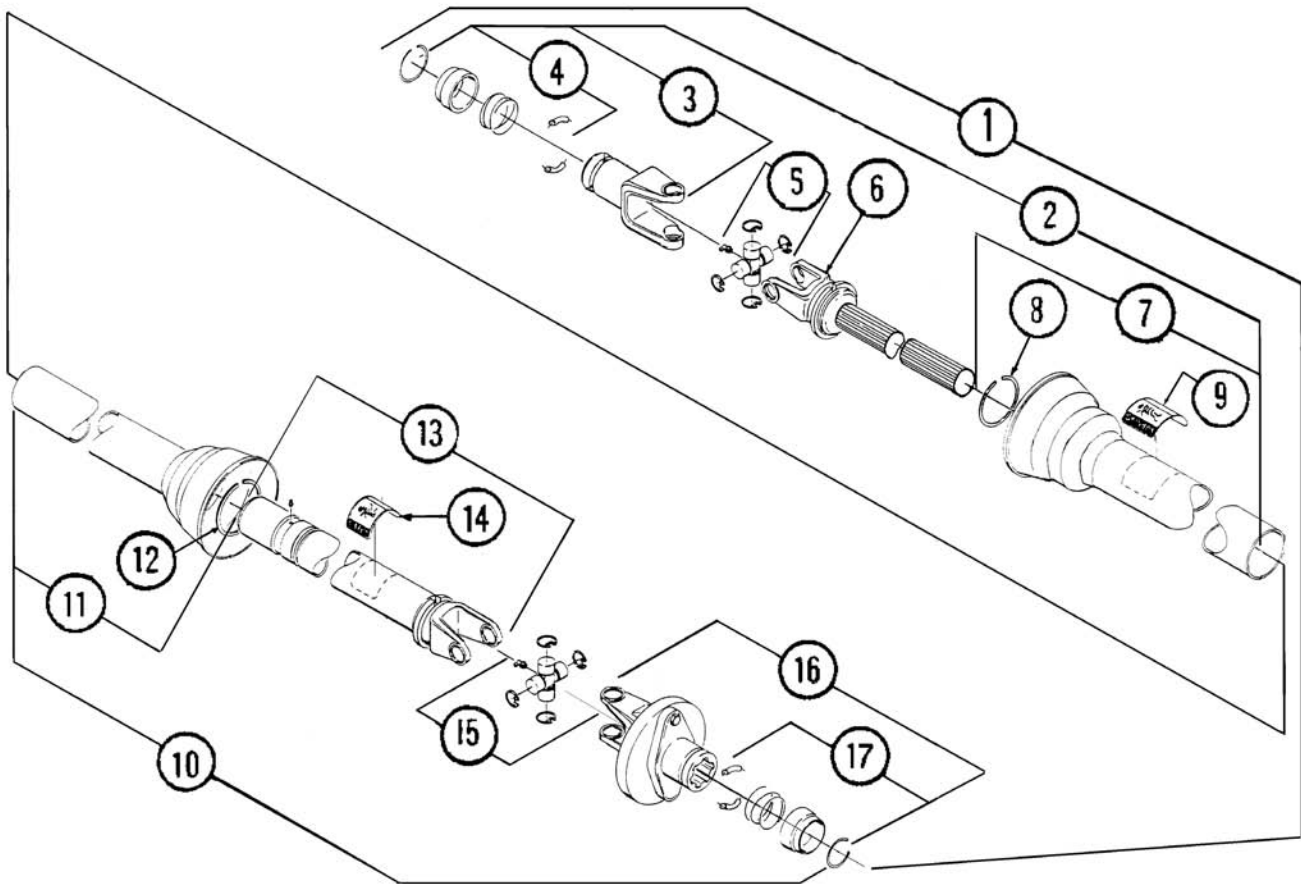
PTO Driveline Parts (Non-CV) - 1000 RPM - 21 Spline - 1 3/8" Yoke



When ordering PTO driveline parts, please specify if the half shaft is square or splined.

REF	PART NO	QTY	DESCRIPTION
	173-308	1	Driveline Complete
1	173-315	1	Joint and Shaft Half with Guard
2	171-543	1	Yoke Assembly
3	171-544	1	Safety Slide Lock Repair Kit
4	170-776	1	Cross and Bearing Kit
5	173-318	1	Yoke and Shaft
6	173-320	1	Outer Guard
7	170-220	1	Nylon Repair Kit
8	171-550	1	Safety Decal
9	172-990	1	Joint and Tube Half with Guard
10	172-847	1	Inner Guard
11	170-220	1	Nylon Repair Kit
12	172-845	1	Yoke Tube and Slip Sleeve
13	171-799	1	Safety Decal
14	172-925	1	Ball Shear Clutch
	172-986	1	Shear Bolt; 1/4" x 2" (grade5)
	170-069	1	Lock Nut; 1/4" (grade 5)
15	171-544	1	Safety Slide Lock Repair Kit
16	170-776	1	Cross and Bearing Kit

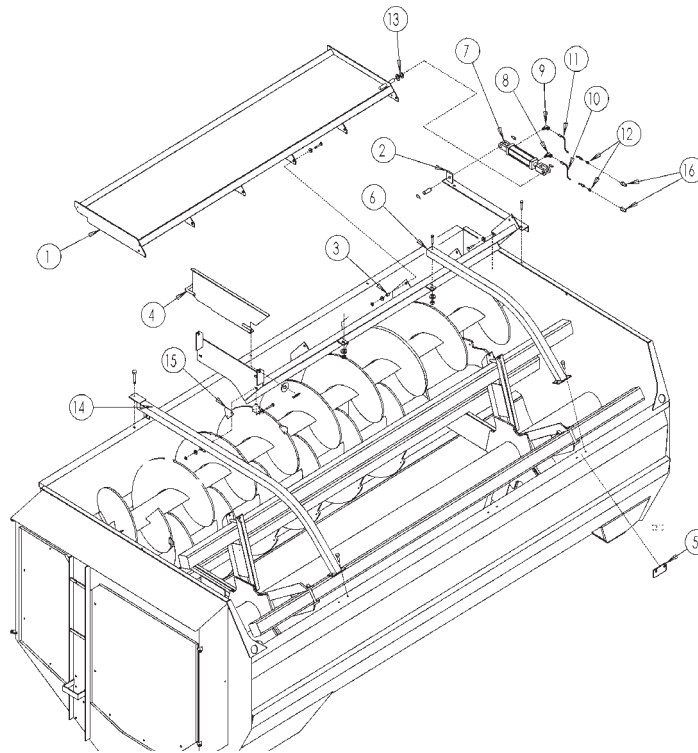
PTO Driveline Parts (Non-CV) - 1000 RPM - 21 Spline - 1 3/8" Yoke



When ordering PTO driveline parts, please specify if the half shaft is square or splined.

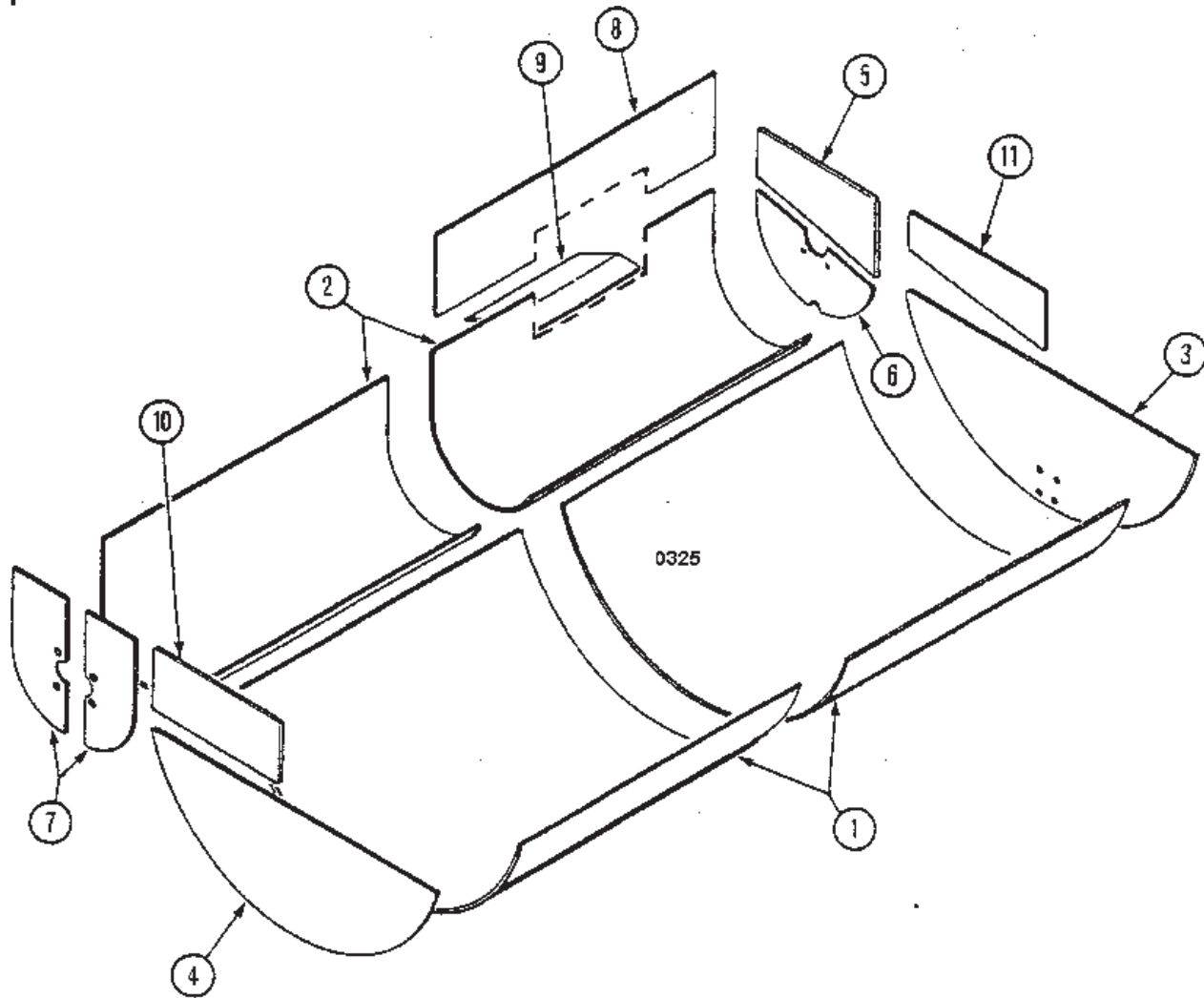
REF	PART NO	QTY	DESCRIPTION
1	175-597	1	Driveline Complete
2	174-689	1	Joint and Shaft Half with Guard
3	171-543	1	Yoke Assembly
4	171-544	1	Safety Slide Lock Repair Kit
5	170-776	1	Cross and Bearing Kit
6	174-683	1	Yoke and Shaft
7	173-320	1	Outer Guard
8	170-220	1	Nylon Repair Kit
9	171-550	1	Safety Decal
10	175-647	1	Joint and Tube Half with Guard
11	172-847	1	Inner Guard
12	170-220	1	Nylon Repair Kit
13	173-426	1	Yoke Tube and Slip Sleeve
14	171-799	1	Safety Decal
15	170-776	1	Cross and Bearing Kit
16	172-925	1	Ball Shear Clutch
	172-986	1	Shear Bolt; 1/4"-20 x 2" (grade5)
	170-69	1	Lock Nut; 1/4"-20 x 2" (grade 5)
17	171-544	1	Safety Slide Lock Repair Kit

HAY-MAX System Parts



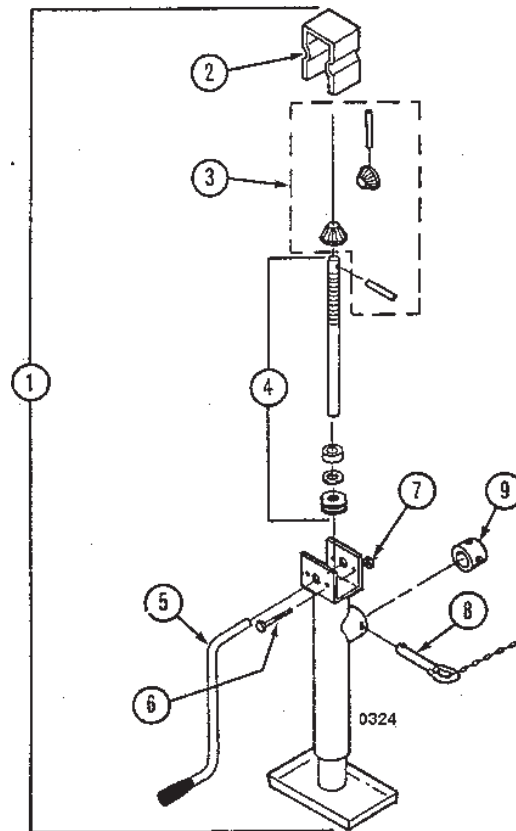
REF	PART NO	QTY	DESCRIPTION
1	102-553	1	Upper Hay-Max Attachment (3136)
	102-484	1	Upper Hay-Max Attachment (3142)
			Mtg Hrd: 1/2" x 1 3/4" Bolt, Ln (4 ea), 1/2" Fw (6 ea)
2	102-481	1	Lower Hay-Max Attachment (3136)
	102-485	1	Lower Hay-Max Attachment (3142 only)
			Mtg Hrd: 1/2" x 1 1/4" Bolt, Lw, Fw, Nut (5ea), 1/2" x 1 1/4" Bolt, Ln (1ea); Flat washer spacers as required
3	134-771	5	Pivot Bushing
4	102-479	1	Hay Maxx Backstop Assy; Mtg Hrd: 3/4" Fw, 3/16" x 2" Cotter Pin
5	134-012	2	Bucket Guard Mount
6	102-022	1	Bucket Guard; Mtg Hrd: 1/2" x 3" Bolt (1ea), 3/8" x 1 1/4" Bolt, Lw, Nut (2 ea)
7	173-273	1	Hydraulic Cylinder; 2" dia. x 10" stroke (seal kit #170-075)
8	171-030	1	Swivel Adapter; 3/8" x 90°
9	171-723	1	Swivel Restrictor; 3/8" x 90°
10	170-468	1	Hydraulic Hose; 1/4" x 162" long
11	170-471	1	Hydraulic Hose; 1/4" x 170" long
12	170-235	2	Reducer Fitting; 1/2" to 3/8"
13	170-122	A/R	Spacer Washer; 1" SAE Flat
14	102-480	1	Bucket Guard; Mtg Hrd: 3/8" x 1 1/4" Bolt, Lw & Nut (2 ea), 1/2" x 1 1/4" B, Ln(1ea)
15	136-921	8	Knife Backing Plate; Mtg Hrd: 5/16" x 1" Bolt, Lw & Nut (2 ea)
	172-442	1	Electric Switching Valve (optional) Mounted on tractor (Not Shown)
16	175-536	2	Pioneer Quick Coupler

Repair Liner Parts



REF	PART NO		QTY	DESCRIPTION
	MILD STEEL	STAINLESS STEEL		
1	134-722	134-975	1	Reel Liner (3136 only)
	134-724	134-974	1	Reel Liner (3136 only)
	134-722	134-975	2	Reel Liner (3142 only)
	136-459	136-463	1	Reel Liner (3142 only)
2	134-723	134-976	1	Auger Liner (3136 only)
	134-725	134-977	1	Auger Liner (3136 only)
	134-723	134-977	2	Auger Liner (3142 only)
	136-460	136-464	1	Auger Liner (3142 only)
3	134-719	134-983	1	Reel End Panel (front)
4	134-718	134-984	1	Reel End Panel (rear)
5	136-458	136-462	1	Auger End Panel Liner (front)
6	136-724	136-725	1	Auger End Panel Liner (front)
7	134-720	134-982	1	Auger End Panel Liner (rear)
8	136-457	136-461	1	Upper Door Liner
9	134-716	134-980	1	Door Opening Liner
10	134-717	134-979	1	Upper Reel End Liner (rear)
11	136-456	136-465	1	Upper Reel End Liner (front)

Jackstand Parts



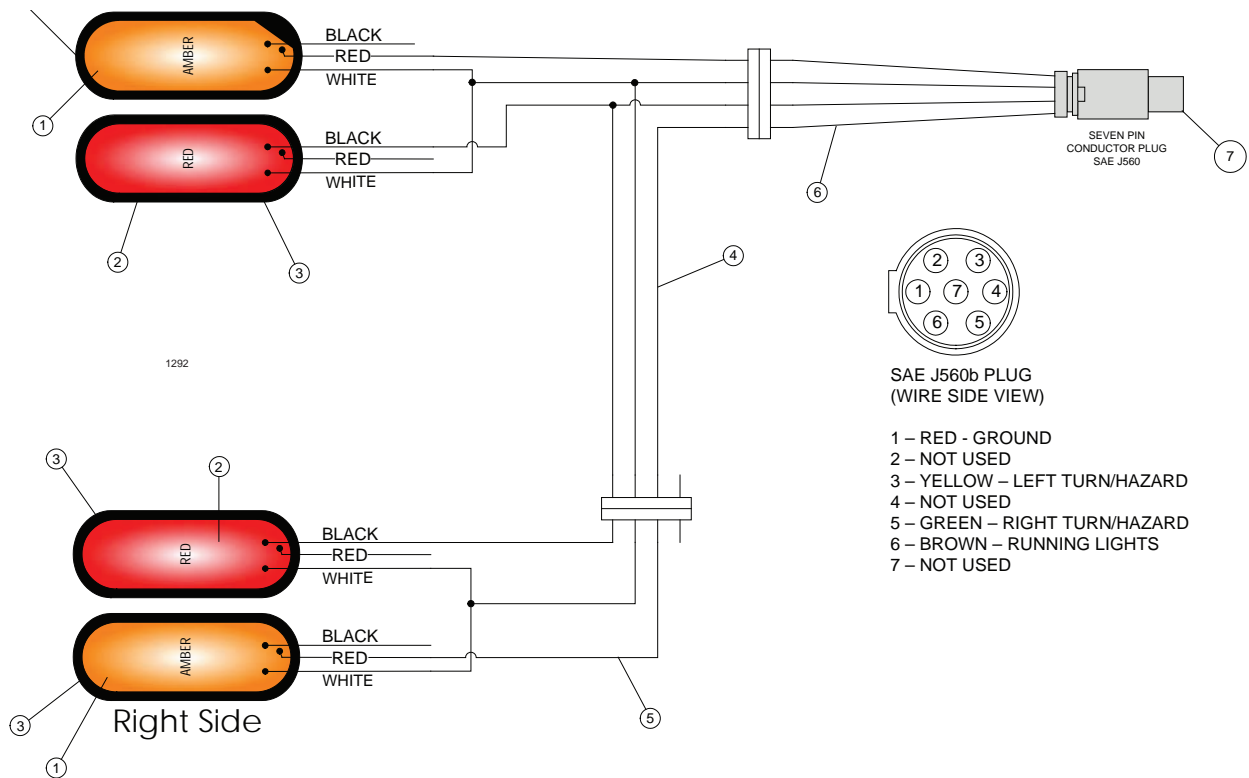
REF	PART NO	QTY	DESCRIPTION
1	171-610	1	Jack Sidewind 7000Lbs.
2	171-814	1	Cover
3	171-614	1	Gear Kit (2 Bevel Gears, 2 Pins)
4	171-611	1	Screw, Nut, Bearing and Washer Assembly
5	171-612	1	Crank Assembly
6	170-509	2	Carriage Bolt; 1/4" x 3"
7	170-125	2	1/4" Nut
8	171-613	1	Pull Pin
9	171-615	1	Mount Tube Assembly

Optional Kits

Safety Chain for Towed Equipment P/N 172-041

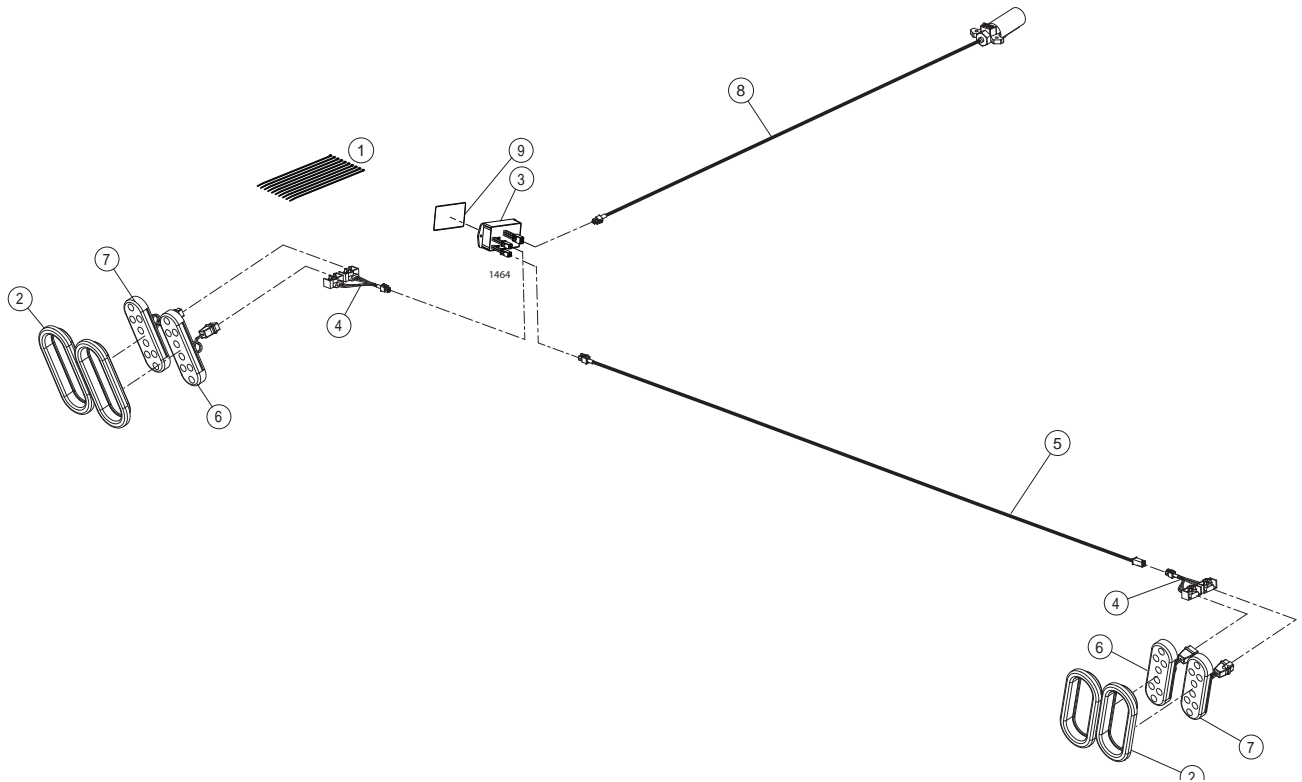
This chain is designed to retain the connection between towing and towed machines, in the event of separation of the primary attaching system. It should be utilized whenever the unit is on the highway.

3136/3142 T 006058 R01112016
Light Kit, before series B0001



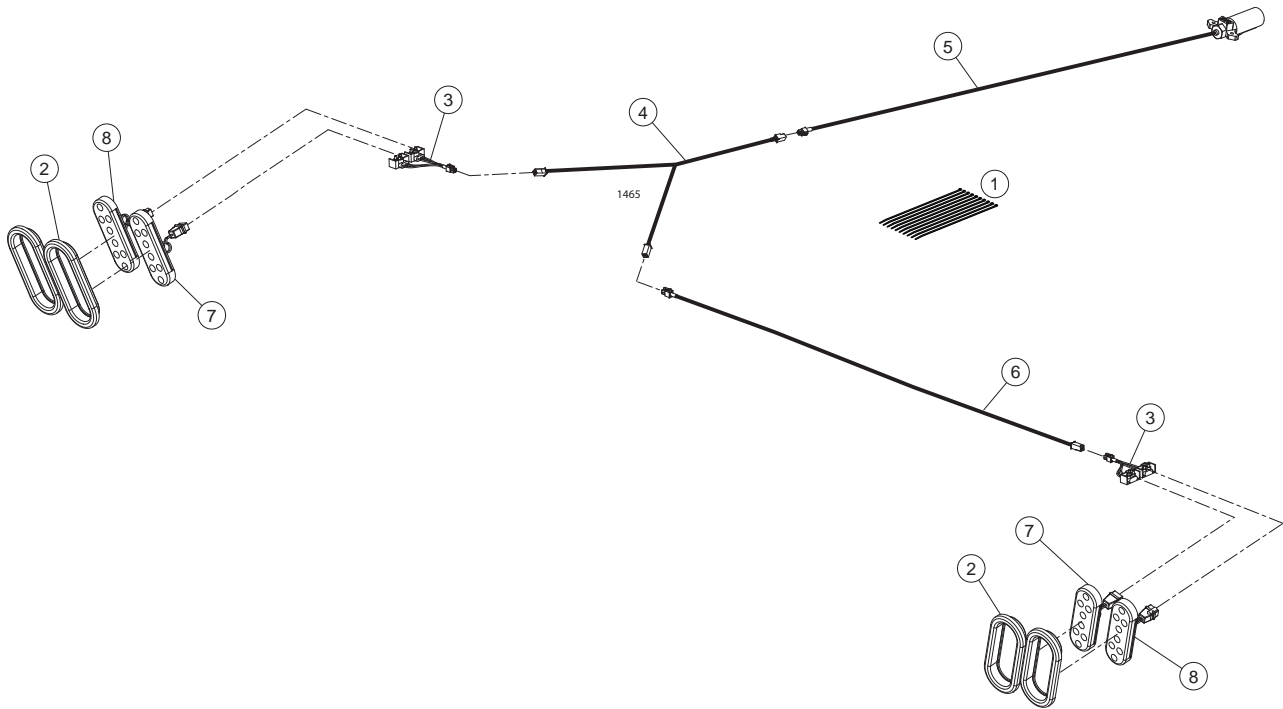
REF	PART NO	QTY	DESCRIPTION
	174-675	1	Light Kit
1	172-110	1	7 Pin Connector
2	174-775	1	Main Harness
3	176-848	4	Light, LH Harness
4	177-480	1	Light, RH Harness
5	174-674	2	Light, Red
6	174-673	2	Light, Amber
7	174-725	4	Grommet

Enhanced lighting (SAE), series B0001 & C0001



REF	PART NO	QTY	DESCRIPTION
1	70172278	10	Wires ties
2	70174725	4	Light grommet
3	70178104	1	Module
4	70178106	2	Wiring harness
5	70178241	1	Wiring harness, 4 conductor 113"
6	70178245	2	Light, oval amber
7	70178246	2	Light, oval red
8	70178252	1	Wiring harness, 6 conductor 330"
9	76034820	1	Tape anti slip

Enhanced lighting (ISO), series B0001 & C0001



REF	PART NO	QTY	DESCRIPTION
1	70172278	10	Wires ties
2	70174725	4	Light grommet
3	70178106	2	Wiring harness
4	70178172	1	12" Y harness x 6 conductor
5	70178237	1	Wiring harness, 6 conductor 330" ISO
6	70178241	1	Wiring harness, 4 conductor 113"
7	70178245	2	Light, oval amber
8	70178246	2	Light, oval red

Decals

The following decals are listed below for your convenience.
Use the operator's manual for decal location and part number ordering.

PART NO	QTY	DESCRIPTION
175-875	1	Complete Decal Set (3136)
175-876	1	Complete Decal Set (3142)
170-490	1	Reduce Engine RPM...
170-849	3	WARNING, Stay Clear Of Power Driven Parts
170-893	1	SMV
171-712	1	Retighten Setscrews...
171-748	1	Door Height Gauge
171-820	4	DANGER, Rotating Auger Inside
171-911	1	CAUTION, Operating Precautions
171-913	1	WARNING, Do Not Operate Unless Shields Are In Place
171-914	2	WARNING, Stay Clear of Chute...
171-915	1	DANGER, Do Not Operate! Shield Missing
171-947	4	DANGER, Do Not Hand Load
171-948	1	BEWARE, Operating Mixer While Loading
171-949	1	Patent Information
172-292	1	Mixer Fill Line
172-786	1	DANGER, Keep Away, Rotating Driveline
172-820	1	CAUTION, Lifting Instructions
172-883	1	Oil Level Plug
173-040	1	CAUTION, PTO Operation
173-041	1	Shearbolt Clutch Adjustment
173-078	1	DANGER, Shield Missing
177-427	2	"REEL AUGGIE" with Stripe
175-799	11'	Stripe (3136)
175-825	15'	Stripe (3142)
177-359	1	LH KUHN KNIGHT(Wave Decal)
177-360	1	RH KUHN KNIGHT(Wave Decal)
176-252	2	Kuhn Knight Decal
177-391	2	"3136"
177-392	2	"3142"
174-686	3	Red Reflector
174-687	1	Amber Reflector
175-485	3	Red/Orange Florescent Strip
177-500	1	HAY MAXX SYSTEM (Optional)
172-449	1	Patent Information/Hay Maxx (Optional)
177-505	1	Roughage Maxx (Optional)New
Q8050980	1	20 mi/h
Q8052780	1	30 km/h (export)

Non-production Decals

174-556	1	HAY MAXX SYSTEM (Optional)
175-782	1	Roughage Maxx (Optional)
175-757	3	"KUHN KNIGHT" 15" High
174-514 ^A	3	"KUHN KNIGHT"
173-447 ^A	2	"REEL AUGGIE"

Power Chute and Slide Tray Decals:

171-914	2	WARNING - Stay Clear of Chute...
174-687	1	Amber Reflector
174-686	1	Red Reflector

PTO Driveline Decals:

171-550	1	DANGER - Rotating Driveline
171-799	1	DANGER - Shield Missing
171-599	1	Do Not Exceed 540 RPM (540 RPM units only)
171-609	1	Do Not Exceed 1000 RPM (1000 RPM units only)

Paint

177-251	Sierra Gold - Aerosol Can
177-250	Sierra Gold - Quart Can
177-249	Sierra Gold - Gallon Can

^APart numbers used before September 1, 2004

Hardware Part Number Listing

All fasteners are NC thread, Grade 5 unless otherwise specified.

HEX HEAD BOLTS

	1/2 x 1-1/2.....	170-002	3/4 x 7 UNF.....	173-747
<u>Size</u>	<u>Part No</u>		3/4 x 7-1/2.....	175-004
1/4 x 1/2.....	173-279	1/2 x 1-1/2 (Grade 8).....	3/4 x 8.....	173-509
1/4 x 3/4.....	170-803	1/2 x 2.....	7/8 x 2-1/4.....	172-892
1/4 x 7/8.....	171-094	1/2 x 2-1/4.....	7/8 x 3.....	172-002
1/4 x 1.....	170-310	1/2 x 2-1/2.....	7/8 x 3-1/2.....	173-020
1/4 x 1-1/2.....	170-068	1/2 x 2-1/2 (Full thread).....	7/8 x 4.....	173-299
1/4 x 2.....	172-986	1/2 x 2-3/4.....	7/8 x 4 UNF.....	171-092
1/4 x 2 (Grade 8).....	175-073	1/2 x 3.....	7/8 x 6-1/2.....	173-774
1/4 x 2-3/4.....	171-203	1/2 x 3-1/2.....	7/8 x 7.....	173-749
1/4 x 3.....	171-403	1/2 x 3-1/2 (Grade 8).....	7/8 x 7 UNF.....	174-097
1/4 x 3-1/2.....	173-640	1/2 x 4.....	7/8 x 8.....	173-750
1/4 x 4.....	173-505	1/2 x 4 (Full thread).....	7/8 x 8 UNF.....	173-515
5/16 x 5/8.....	170-532	1/2 x 5.....	1 x 3-1/2.....	173-021
5/16 x 3/4.....	170-262	1/2 x 6.....	1 x 4.....	175-119
5/16 x 3/4 (Stainless steel).....	174-787	1/2 x 6 (Grade 8).....	1 x 4 (Grade 8).....	175-248
5/16 x 7/8.....	170-256	1/2 x 6-1/2.....	1 x 7 UNF.....	173-516
5/16 x 1.....	170-027	1/2 x 7.....	1 x 8.....	174-723
5/16 x 1-1/4 (Full thread).....	170-188	1/2 x 7-1/2.....	1 x 8 (grade 8) UNF.....	173-713
5/16 x 1-1/2.....	170-372	1/2 x 8-1/2.....	1-1/4 x 4-1/2 (grade 8).....	175-003
5/16 x 1-3/4.....	170-263	1/2 x 11.....	M8 x 16MM (Grade 8.8).....	174-610
5/16 x 2.....	172-987	9/16 x 1.....	M8 x 20MM (Grade 8.8).....	175-193
5/16 x 2-1/2.....	170-369	9/16 x 1-1/4.....	M8 x 25MM (Grade 8.8).....	174-900
5/16 x 3.....	170-295	9/16 x 1-1/2.....	M10 x 22MM (Grade 8.8).....	175-016
5/16 x 3-1/4.....	171-639	9/16 x 2.....	M10 x 25MM (Grade 8.8).....	173-344
5/16 x 3-1/2.....	173-748	5/8 x 1.....	M12 x 25MM (Grade 8.8).....	171-566
5/16 x 4.....	170-293	5/8 x 1-1/4.....	M12 x 35MM (Grade 8.8).....	175-020
5/16 x 4-1/2.....	170-294	5/8 x 1-1/2.....	M12 x 40MM (Grade 12.9).....	175-190
5/16 x 5 (Grade 8).....	172-983	5/8 x 1-3/4 (Full thread).....	M12 x 45MM (Grade 10.9).....	174-911
5/16 x 5-1/2 (Grade 8).....	172-952	5/8 x 2.....	M14 x 30MM (Grade 8.8).....	173-518
3/8 x 3/4.....	170-439	5/8 x 2 (Full thread).....	SELF TAPPING SCREW	
3/8 x 3/4 (Stainless steel).....	174-788	5/8 x 2-1/4.....	1/4 x 3/4.....	174-874
3/8 x 7/8.....	170-268	5/8 x 2-1/2.....	CARRIAGE BOLTS	
3/8 x 7/8 (soc. hd.capscrew).....	172-044	5/8 x 2-1/2 (Full thread).....	1/4 x 1-1/4 (Grade 2).....	170-311
3/8 x 1.....	170-054	5/8 x 2-3/4.....	1/4 x 1-1/2 (Grade 2).....	170-355
3/8 x 1-1/4.....	170-005	5/8 x 3.....	1/4 x 2 (Grade 2).....	170-299
3/8 x 1-1/4 (Stainless steel).....	174-917	5/8 x 3-1/2.....	1/4 x 2-1/2 (Grade 2).....	171-394
3/8 x 1-1/2.....	170-368	5/8 x 4.....	1/4 x 2-3/4 (Grade 2).....	170-508
3/8 x 1-3/4.....	172-383	5/8 x 4-1/2.....	1/4 x 3.....	170-509
3/8 x 2.....	170-245	5/8 x 5.....	5/16 x 1 (Grade 2).....	170-370
3/8 x 2-1/4.....	170-320	5/8 x 5-1/2.....	5/16 x 1-1/2 (Grade 2).....	170-296
3/8 x 2-1/2.....	170-257	5/8 x 6.....	5/16 x 2-1/2 (Grade 2).....	171-395
3/8 x 2-1/2 (Full thread).....	170-128	5/8 x 6-1/2.....	5/16 x 5-1/2 (Grade 2).....	170-494
3/8 x 2-1/2 (Lag).....	171-775	5/8 x 7-1/2.....	3/8 x 3-1/2 (Grade 2).....	171-283
3/8 x 3.....	170-380	5/8 x 9-1/2.....	3/8 x 4-1/2 (Grade 2).....	170-191
3/8 x 3-1/2.....	170-292	3/4 x 1-1/2.....	3/8 x 5 (Grade 2).....	170-495
3/8 x 4.....	170-877	3/4 x 2.....	3/8 x 6-1/2 (Grade 2).....	171-174
3/8 x 4-1/4 (Black oxide).....	171-813	3/4 x 2 (Full thread).....	3/8 x 8 (Grade 2).....	170-297
3/8 x 4-1/2.....	170-519	3/4 x 2 (Grade 8).....	3/8 x 13 (Grade 2).....	170-298
3/8 x 5.....	170-493	3/4 x 2-1/4.....	3/8 x 13-1/2 (Grade 2).....	170-300
3/8 x 5-1/2.....	174-196	3/4 x 2-1/2.....	1/2 x 1-1/2 (Grade 5).....	174-918
3/8 x 5-1/2 (Full thread).....	170-593	3/4 x 2-1/2 (Grade 8).....	1/2 x 6-1/2 (Grade 2).....	171-098
3/8 x 6.....	174-304	3/4 x 3.....	1/2 x 9 (Grade 2).....	171-255
3/8 x 6-1/2.....	171-291	3/4 x 3 UNF.....	5/8 x 2.....	175-110
3/8 x 7.....	172-587	3/4 x 3-1/2.....	5/8 x 2-1/2 (Grade 5).....	174-790
7/16 x 3/4.....	170-265	3/4 x 3-1/2 (Grade 8).....	PLOW BOLTS	
7/16 x 1.....	170-032	3/4 x 4.....	5/8 x 2.....	174-767
7/16 x 1-1/4.....	170-354	3/4 x 4 (Grade 8) UNF.....	3/4 x 2-1/2.....	174-948
7/16 x 1-1/4 (Grade 8).....	174-216	3/4 x 4-1/2.....	TRUSS HEAD BOLTS	
7/16 x 1-1/2.....	170-059	3/4 x 4-1/2 (Grade 8).....	#6-32 x 3/4.....	172-416
7/16 x 2.....	170-356	3/4 x 4-1/2 (Grade 8) UNF.....	#6-32 x 1.....	173-079
7/16 x 2-1/2.....	170-379	3/4 x 5.....	#8-32 x 1-1/2.....	171-210
7/16 x 3.....	170-270	3/4 x 5 UNF.....	#10-32 x 3/4.....	171-604
7/16 x 5-1/2.....	170-377	3/4 x 5-1/2 (Grade 8) UNF.....	#10-32 x 1.....	172-882
7/16 x 6.....	170-378	3/4 x 6.....	1/4 x 3/4.....	170-193
1/2 x 3/4.....	171-252	3/4 x 6 UNF.....	1/4 x 1.....	170-194
1/2 x 1.....	170-149	3/4 x 6 (Grade 8).....	5/16 x 1.....	170-117
1/2 x 1-1/4.....	170-373	3/4 x 7.....		

Hardware Part Number Listing

SET SCREWS (Socket Head)(Cup Point)	7/8 UNF	171-093	3/32 x 3/4.....	170-364
1/4 x 1/4.....	1	174-928	1/8 x 1	170-045
1/4 x 5/8.....	1 UNF	170-527	1/8 x 1-1/4.....	170-033
5/16 x 1/4.....	M45 x 1.5MM.....	175-199	1/8 x 1-1/2.....	170-382
5/16 x 5/16	M50 x 1.5MM.....	175-197	5/32 x 1.....	170-421
5/16 x 5/16 UNF	JAM NUTS		5/32 x 1-1/2.....	170-236
5/16 x 3/8 UNF.....	1/4UNF	171-386	5/32 x 3.....	170-135
5/16 x 1/2	5/16	173-521	3/16 x 1-1/4.....	170-991
5/16 x 5/8 UNF.....	3/8.....	170-022	3/16 x 2.....	170-115
5/16 x 1 (Sq hd).....	7/16	170-046	1/4 x 1-1/2.....	170-521
5/16 x 1-1/2.....	1/2.....	170-036	1/4 x 2	170-056
3/8 x 1/4	5/8.....	170-037	1/4 x 2-1/2.....	173-961
3/8 x 3/8.....	3/4.....	170-035	ROLLER CHAIN	
3/8 x 1/2.....	1	174-927	CONNECTOR LINKS	
3/8 x 1/2 UNF.....	FLAT WASHERS		#50	170-088
3/8 x 3/4.....	#10	171-525	#50-2R.....	170-094
3/8 x 3/4 (Sq hd).....	1/4.....	170-301	#60	170-089
3/8 x 1	1/4 Heavy	171-083	#60-2R.....	170-095
3/8 x 1 (Sq hd).....	1/4 Fender.....	173-672	#60H.....	171-102
3/8 x 1 (Sq hd) (Dog pt).....	5/16	170-127	#80	170-090
7/16 x 7/16.....	5/16 Fender	173-811	#80H.....	170-821
7/16 x 1 (Sq hd).....	3/8.....	170-244	#100.....	170-091
1/2 x 5/8	3/8 Heavy	170-302	#100H.....	171-969
1/2 x 1	3/8 Aluminum.....	173-900	#120.....	170-092
1/2 x 1-1/4 (half dog point).....	7/16	170-138	#140.....	170-093
5/8 x 5/8.....	1/2.....	170-040	#140H.....	173-552
3/4 x 3/4 (Sq hd) (Dog pt).....	1/2 (Grade 8).....	172-984	#160.....	170-888
HEX NUTS	9/16	173-693	OFFSET LINKS	
#6-32	5/8.....	170-066	#50	170-096
#10-32.....	5/8 (Grade 8).....	173-581	#50-2R.....	170-102
1/4.....	3/4.....	170-015	#60	170-097
5/16	7/8.....	173-298	#60-2R.....	170-103
3/8.....	7/8 Heavy	170-131	#60H.....	171-103
7/16.....	1	170-122	#80	170-098
7/16 (Grade 8) UNF	1-1/4.....	170-928	#80H.....	170-820
1/2.....	LOCK WASHERS		#100.....	170-099
9/16	#6.....	172-417	#100H.....	172-145
5/8.....	#10.....	171-605	#120.....	170-100
3/4.....	1/4.....	170-124	#140.....	170-101
3/4 UNF.....	5/16	170-118	#140H.....	173-553
3/4 (Grade 8) UNF.....	3/8.....	170-006	#160.....	170-887
7/8.....	7/16	170-061	ROLLER LINKS	
1	1/2.....	170-003	#50	171-415
1 UNF	9/16	173-692	#60	171-416
1 (Grade 8).....	5/8.....	170-010	#80	171-417
1 (Grade 8) UNF.....	3/4.....	170-016	#80H.....	170-795
1-1/8 UNF	3/4 External Tooth.....	174-793	#100.....	171-418
1-1/4 UNF	7/8.....	172-003	#100H.....	172-146
1-1/4 (Grade 8).....	1	171-021	#120.....	171-419
M8 x 1.25MM.....	1-1/4.....	175-005	#140.....	171-420
M30 x 1.5MM.....	ZERKS		#160.....	171-421
M50 x 1.5MM.....	1/8 NPT.....	170-865		
LOCK NUTS	1/8 NPT-45 Deg.....	170-864		
#6-32	1/8 NPT-65 Deg.....	170-215		
#10-32.....	1/8 NPT-90 Deg.....	170-866		
1/4.....	3/16 drive in	174-124		
5/16	1/4-28.....	170-023		
3/8.....	1/4-28 - 45 Deg.....	170-148		
7/16	1/4-28 - 90 Deg.....	170-049		
1/2.....	1/4 NPT.....	170-277		
1/2 UNF	1/4 NPT - 45 Deg.....	174-130		
1/2 (Grade 8).....	COTTER PINS			
9/16.....	1/16 x 1/2.....	170-992		
5/8.....				
3/4.....				
3/4 (Grade 8).....				
3/4 (Grade 8) UNF.....				
7/8.....				

Part Number Index

101-227 ...17, 19	134-024 ...9	136-460 ...35	170-478 ...7, 15
101-231 ...17, 19	134-086 ...7	136-461 ...35	170-490 ...38
101-736 ...17, 19	134-136 ...22, 23, 24, 25	136-462 ...35	170-504 ...39
101-742 ...27	134-155 ...7	136-463 ...35	170-506 ...39
101-791 ...22, 23, 24, 25	134-389 ...17, 19	136-464 ...35	170-509 ...36
101-818 ...7	134-390 ...17, 19	136-678 ...15	170-513 ...23
101-819 ...7	134-395 ...17, 19	136-724 ...35	170-776 ...30, 31, 32, 33
101-891 ...22, 23, 24, 25	134-491 ...12	136-725 ...35	170-800 ...7
102-008 ...10	134-547 ...12	136-726 ...22, 23, 24, 25	170-845 ...7
102-022 ...34	134-716 ...35	136-748 ...11	170-849 ...38
102-248 ...13	134-717 ...35	136-921 ...34	170-859 ...19
102-259 ...9	134-718 ...35	137-132 ...29	170-865 ...6, 10
102-261 ...6	134-719 ...35	140-896 ...17, 19	170-893 ...38
102-307 ...27, 29	134-720 ...35	140-897 ...17, 19	170-919 ...9
102-323 ...29	134-722 ...35	140-902 ...17, 19	170-920 ...27, 29
102-325 ...29	134-723 ...35	140-933 ...17, 19	170-921 ...27, 29
102-401 ...13	134-724 ...35	140-937 ...17, 19	170-922 ...27, 29
102-402 ...13	134-725 ...35	140-938 ...17, 19	170-926 ...27, 29
102-404 ...12	134-771 ...34	141-608 ...17, 19	170-927 ...27, 29
102-405 ...12	134-974 ...35	142-186 ...12	170-928 ...27, 29
102-407 ...11	134-975 ...35	142-187 ...12	170-947 ...15
102-409 ...13	134-976 ...35	142-312 ...10	171-039 ...39
102-410 ...13	134-977 ...35	143-415 ...17, 20, 21	171-087 ...39
102-412 ...27, 29	134-979 ...35	147-183 ...6	171-275 ...39
102-413 ...11	134-980 ...35	147-184 ...9	171-366 ...39
102-414 ...14	134-982 ...35	170-009 ...39	171-412 ...39
102-417 ...29	134-984 ...35	170-014 ...39	171-772 ...39
102-419 ...34	135-555 ...11	170-030 ...39	171-008 ...17, 19
102-422 ...13	135-598 ...9	170-038 ...39	171-030 ...14, 15, 19, 34
102-423 ...13	135-675 ...13	170-058 ...39	171-045 ...7
102-424 ...13	135-692 ...9	170-065 ...39	171-136 ...19, 23, 25
102-426 ...27, 29	135-697 ...9	170-067 ...39	171-151 ...19
102-428 ...34	135-698 ...13	170-129 ...39	171-186 ...17, 19
102-430 ...15	135-704 ...6	170-195 ...39	171-189 ...23
102-437 ...6	135-906 ...29	170-258 ...39	171-257 ...17, 19
102-439 ...6	136-118 ...6	170-374 ...39	171-259 ...17, 19
102-479 ...34	136-260 ...6	170-006 ...29	171-260 ...17, 19
102-480 ...34	136-306 ...6	170-008 ...6	171-265 ...17, 19
102-482 ...11	136-322 ...9	170-013 ...29	171-320 ...32
102-483 ...11	136-326 ...14	170-015 ...29	171-330 ...19
102-484 ...34	136-327 ...13	170-028 ...20, 21, 30, 31, 33	171-409 ...6, 9
102-553 ...34	136-331 ...9	170-052 ...9	171-414 ...17, 19
103-702 ...17, 19	136-332 ...9	170-056 ...27, 29	171-426 ...22, 23
103-755 ...19	136-333 ...9	170-060 ...6	171-427 ...19
103-756 ...17, 19	136-334 ...9	170-069 ...32	171-430 ...22, 23, 24, 25
103-758 ...17, 19	136-335 ...9	170-073 ...14	171-542 ...30
103-780 ...17, 19	136-343 ...9	170-074 ...14, 17, 19	171-543 ...32, 33
103-781 ...19	136-360 ...14	170-075 ...14, 15, 19, 34	171-544 ...30, 31, 32, 33
103-918 ...17, 19	136-361 ...6	170-110 ...17, 19	171-550 ...30, 31, 32, 33, 38
104-084 ...12	136-362 ...6	170-115 ...15	171-585 ...6, 9
104-085 ...12	136-363 ...14	170-122 ...17, 19, 20, 21, 34	171-599 ...38
104-343 ...17	136-373 ...27, 29	170-125 ...36	171-609 ...38
104-344 ...20, 21	136-393 ...13	170-127 ...20, 21	171-610 ...27, 29, 36
104-506 ...17	136-408 ...11, 12	170-149 ...9	171-611 ...36
105-619 ...13	136-411 ...6	170-153 ...39	171-612 ...36
105-648 ...13	136-415 ...6	170-167 ...39	171-613 ...36
105-804 ...10	136-418 ...14	170-220 ...30, 31, 32, 33	171-614 ...36
131-894 ...9	136-419 ...14	170-235 ...14, 15, 19, 22, 23	171-615 ...36
133-278 ...9	136-436 ...11	, 24, 25, 34	171-616 ...27, 29
133-920 ...6	136-444 ...15, 17, 19	170-244 ...10	171-653 ...27, 29
133-942 ...17, 19	136-454 ...6	170-254 ...17, 19	171-666 ...17, 19
133-943 ...17, 19	136-456 ...35	170-316 ...6	171-668 ...19
133-952 ...17, 19	136-457 ...35	170-465 ...22, 23	171-712 ...38
133-976 ...27	136-458 ...35	170-468 ...14, 15, 34	171-723 ...34
134-012 ...34	136-459 ...35	170-471 ...14, 15, 34	171-748 ...38

Part Number Index

171-768 ...39	172-990 ...32	174-771 ...20, 21
171-786 ...38	172-994 ...31	174-775 ...37
171-799 ...30, 31, 32, 33, 38	173-019 ...29	174-784 ...27, 29
171-814 ...36	173-021 ...17, 19	174-886 ...17, 19
171-820 ...38	173-034 ...29	174-927 ...17, 19
171-877 ...39	173-040 ...38	174-928 ...17, 19
171-883 ...17, 19	173-041 ...38	175-256 ...29
171-899 ...29, 39	173-077 ...36	175-485 ...38
171-900 ...29	173-078 ...38	175-536
171-911 ...38	173-164 ...6	175-578 ...20
171-913 ...38	173-220 ...19	175-579 ...20
171-914 ...38	173-230 ...27	175-582 ...21
171-915 ...38	173-270 ...14, 15	175-583 ...21
171-919 ...6	173-300 ...27, 29	175-595 ...20
171-920 ...13	173-301 ...27, 29	175-626 ...21
171-930 ...9	173-302 ...27, 29	175-627 ...21
171-932 ...17, 19	173-303 ...29	
171-934 ...9	173-304 ...29	
171-935 ...10	173-305 ...29	
171-937 ...15, 17, 19	173-306 ...7	
171-940 ...19	173-307 ...7	
171-947 ...38	173-308 ...32	
171-948 ...38	173-309 ...30	
171-949 ...38	173-313 ...27, 29	
171-988 ...7	173-314 ...38	
171-989 ...9	173-315 ...32	
171-992 ...38	173-316 ...30	
171-998 ...22, 23, 24, 25	173-318 ...30, 32	
172-005 ...15	173-320 ...30, 33	
172-024 ...10	173-321 ...31	
172-110 ...37	173-322 ...38	
172-138 ...27	173-323 ...38	
172-193 ...9	173-357 ...38	
172-292 ...38	173-358 ...38	
172-356 ...39	173-426 ...33	
172-360 ...27, 29	173-435 ...31	
172-361 ...27, 29	173-448 ...38	
172-362 ...27, 29	173-533 ...10	
172-367 ...9	173-916 ...27	
172-368 ...9	173-917 ...27	
172-381 ...39	173-926 ...27	
172-396 ...27, 29	174-064 ...12	
172-421 ...39	174-065 ...12	
172-441 ...34	174-093 ...12	
172-442 ...34	174-556 ...38	
172-445 ...6	174-558 ...11	
172-447 ...31	174-577 ...27, 29	
172-449 ...38	174-673 ...37	
172-493 ...7	174-674 ...37	
172-496 ...31	174-675 ...37	
172-751 ...7	174-681 ...33	
172-819 ...27	174-682 ...31	
172-820 ...38	174-683 ...33	
172-822 ...10	174-684 ...31	
172-823 ...10	174-686 ...38	
172-845 ...30, 32	174-687 ...38	
172-847 ...30, 32, 33	174-689 ...33	
172-868 ...38	174-690 ...33	
172-883 ...38	174-695 ...31	
172-884 ...9	174-696 ...31	
172-924 ...30, 31, 33	174-725 ...37	
172-925 ...32		
172-986 ...6, 32		
172-987 ...6, 20, 21, 30, 31, 33		
172-989 ...30		

