

# **REEL AUGGIE 3250/3300**

## **Tow Type**

### **SERVICE PARTS LISTING**

#### **TABLE OF CONTENTS**

Using This Listing .....	1
Front End Parts .....	2-5
2-Spider Reel & Auger Parts (3250) .....	6-7
2-Spider Reel & Auger Parts (3300) .....	8-9
3-Spider Reel Parts (3250 & 3300) .....	10-11
Door Parts .....	12
Slide Tray .....	13
Power Chute .....	14-15
Selector Valve - Slide Tray .....	16
Diverter Valve - Power Chute .....	17
Eaton Scale Parts .....	18-19
J-Star Scale Parts .....	20-21
Undercarriage .....	22-23
PTO Driveline Parts .....	24-25
Jackstand .....	26
Repair Liner Parts .....	27
Hay-Max Kit Parts .....	28-29
Decal & Paint List .....	30
Optional Kits .....	31
Flighting Terms & Dimensions .....	32
Universal Joint Repair .....	33
Hardware Listing .....	34-35
Part Number Index .....	36-38

**ABBREVIATIONS**

3250/3300-TOW R092394

Assy	Assembly
A/R	As Required
B	Bolt
Brg	Bearing
BSN	Before Serial Number
BTM	Bottom
C Bolt	Carriage Bolt
Ctr	Cotter
CV	Constant Velocity (Joint)
Dia	Diameter
Ea	Each
Eq or Equiv	Equivalent
FLN	Flanged Lock Nut
FW	Flat Washer
Ga	Gauge
Gr or Grd	Grade
Hd	Head
Hyd	Hydraulic
ID	Inside Diameter
Ill or Illus	Illustration
Ind	Indicator
KW	Keyway
LH	Left Hand
LW	Lock Washer
Mtg Hrd	Mounting Hardware
NC	National Coarse
NF	National Fine
OD	Outside Diameter
Pc(s)	Piece(s)
PD	Pitch Diameter
PTO	Power Takeoff (Shaft)
Q or Qty	Quantity
Reg Mach	Regular Machine
RH	Right hand
SN	Serial Number
Sprkt	Sprocket
Sq	Square
Std	Standard
UASN	Used After Serial Number
UBSN	Used Before Serial Number

## USING THIS SERVICE PARTS LISTING

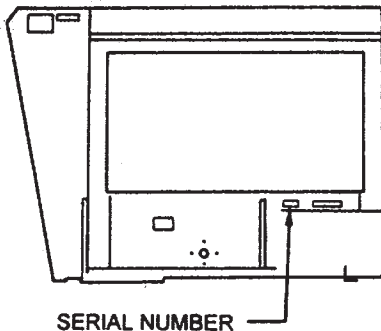
3250/2330-TOW

This listing uses a number indentation system to specify the parts of an assembly. Any number which is indented to the right, indicates that it is a component of the item to the upper left. Example:

<u>Part no</u>	<u>Description</u>	<u>Qty</u>
uuu-uuu	Assembly A	2
vvv-vvv	Sub-Assembly B (Component of A)	3
www-www	Component of B	5
xxx-xxx	Another Com- ponent of B	1
yyy-yyy	Sub-Assembly C (Component of A)	1
etc.		

Using this system, the sub-assemblies and their components are included if an **Assembly** is ordered. Similarly, the components of a sub-assembly are included if a sub-assembly is ordered.

The quantity (qty) associated with an assembly, represents the number of times an assembly could be shown in the drawing. The sub-assembly quantity however, is the number of times a sub-assembly is used to build one assembly. Similarly, the component quantity refers to the number of times a given component is found in one sub-assembly.



Serial Number Location  
Front View  
Figure A

**MODEL AND SERIAL NUMBER INFORMATION** is located below the drive shielding (Fig. A). The model number, serial number and part number should be known when asking service personnel for parts.

If you cannot find the part you need, be as descriptive as possible when placing an order:

**Sprockets:** give the bore size, number of teeth, and number and size of keyways.

**Roller chain:** give the size of chain (stamped on the side of each link) and number of links.

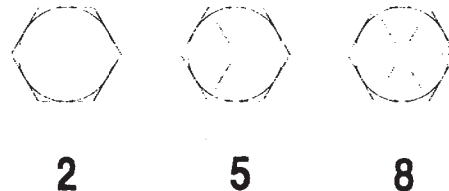
**Shafting:** give the diameter, length, and number and size of keyways.

Hardware is generally not included with parts. If you need any hard-ware, check the size, the length, and the grade (Fig. B), then check the hardware list in this manual for the part numbers. **All hex head bolts up to and including 7/16" diameter are grade 5, and nuts are grade B unless otherwise stated.**

The hardware listing also includes listings for zerks, cotter pins, set screws, and roller chain links.

The illustrations in this manual are meant to be used only as a guide for identifying parts and locating their relative positions.

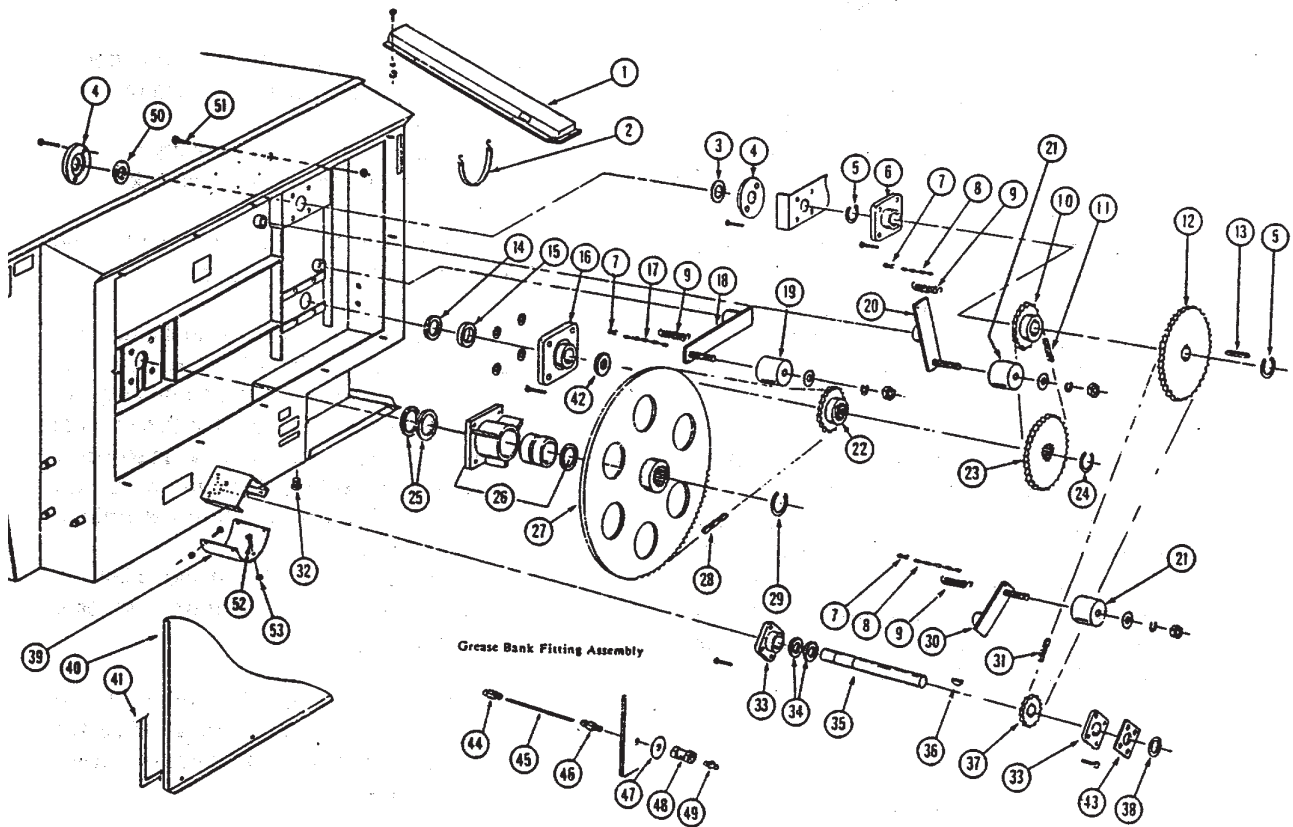
## BOLT GRADES



Bolt Head Grade Markings  
Figure B

**FRONT END PARTS**

3250/3300-TOW R092895



KNIGHT MANUFACTURING CORP. PO BOX 167 BROADHEAD, WI 53520  
OFFICE: (608) 897-2131 PARTS/SERVICE: (608) 897-2125 FAX: (608) 897-2561

**FRONT END PARTS**

3250/3300-TOW R011395

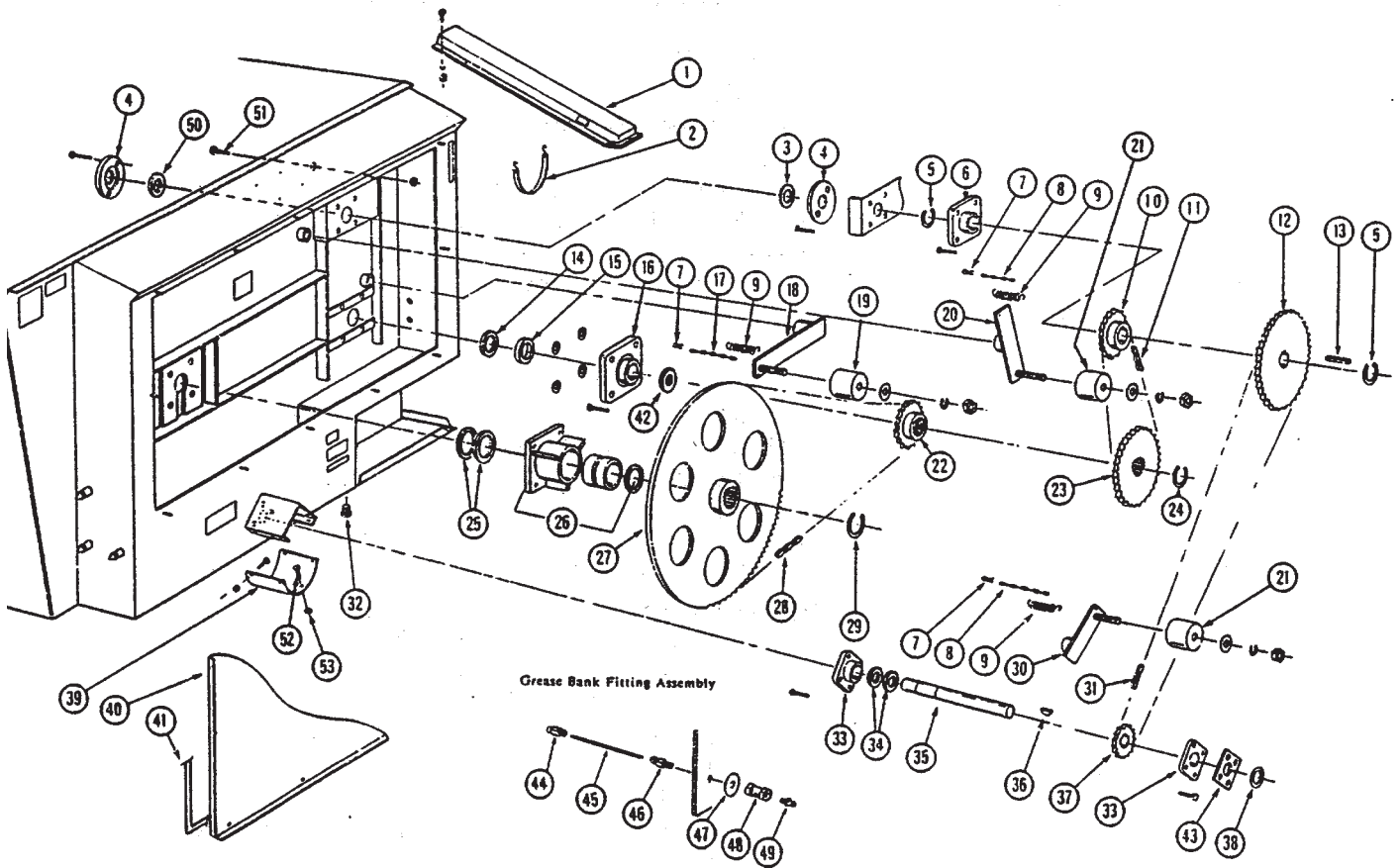
REF	PART NO	QTY	DESCRIPTION
1	101-733	1	Indicator Mount Assembly Mtg Hrd: 3/8" x 1" Bolt, LW & Nut (4 ea)
2	171-936	1	Hydraulic Hose Retaining Strap
3	133-376	1	Seal; 2" ID x 3-1/2" OD
4	133-852	2	Seal Retaining Plate; 1/4" x 4-5/8" Dia Mtg Hrd: 5/16" x 1-1/4" Bolt, FLN (2 ea)
5	170-142	2	Snap Ring; 2", Truarc 5100-200 Or Equiv
6	170-008	1	Bearing; 2", FYH UCF X10-32E L-III Or Equiv Mtg Hrd: 5/8" x 1-3/4" Bolt, LW & Nut (4 ea)
7	170-800	3	Clinch Pin
8	170-478	2	Machine Chain; #4 x 10 Link (7")
9	172-006	3	Spring
10	133-916	1	Sprocket; 80-B-18, 2" Bore, 1/2" Keyway
11	170-108	1	Roller Chain; 80-1-70 Pitch, W/Connector Link
12	133-917	1	Sprocket; 60-B-72, 2" Bore, 1/2" Keyway
13	170-898	1	Key; 1/2" x 2-1/2" Square
14	133-277	1	Seal; 2-1/2" ID x 3-1/2" OD
15	133-903	1	Seal Spacer Pipe; 2-1/2" ID x 1" Long
16	170-053	1	Bearing; 2-1/2", FYH UCF X13-40E L-III Mtg Hrd: 5/8" x 3" Bolt, LW, FW & Nut (4 ea)
17	171-032	1	Machine Chain; #4 x 12 Links
18	101-761	1	Chain Tightener Arm (#100)
19	134-086	1	Tightener Block Mtg Hrd: 1/2" x 4" Bolt, FW, LW & Nut
20	101-818	1	Chain Tightener Arm (#80)
21	134-155	2	Tightener Block Mtg Hrd: 1/2" x 2-3/4" Bolt, FW, LW & Nut
22	133-914	1	Sprocket; 100-B-13, 2-1/2" Splined Bore
23	133-915	1	Sprocket; 80-B-42, 2-1/2" Splined Bore
24	170-152	1	Snap Ring; 2-1/2", Truarc 5100-250 Or Equiv
25	135-598	2	Seal Washer
	133-899 <sup>A</sup>	1	Seal; 3" ID x 4-1/2" OD
26	102-249	1	Bearing Assembly; Mtg Hrd: 5/8" x 1-3/4" Bolt, Lw, Nut
	135-662	1	Plastic Sleeve
	172-874	1	Quadring Seal
	171-930 <sup>A</sup>	1	Bearing; 3" Spherical Roller, F-B22448E Or Equiv. Mtg Hrd: 3/4" x 2-1/4" Bolt, LW & Nut
27	135-654	1	Sprocket; 100-B-82, 3-1/2" Splined Bore
	133-913 <sup>A</sup>	1	Sprocket; 100-B-82, 3" Splined Bore
28	171-931	1	Roller Chain; 100H-1-110 Pitch, W/Connector Link
29	171-607	1	Snap Ring; 3-1/2" Tru-Arc 5100-350 or equiv.
	171-934 <sup>A</sup>	1	Snap Ring; 3", Tru-Arc 5100-300 or equiv
30	101-819	1	Chain Tightener Arm (#60)

A: The 3" roller bearing has been replaced with a 3-1/2" sleeve bearing. Use before serial number (3250-476), (3300-1135). Parts are not interchangeable with the current design.

An asterisk (\*) at the end of a part number (XXX-XXX\*) indicates that the part is no longer used in production for this application. Superscript letters (XXX-XXX<sup>A</sup>) refer to footnotes and/or illustration boxes.

**FRONT END PARTS**

3250/3300-TOW R092895



KNIGHT MANUFACTURING CORP. PO BOX 167 BRODHEAD, WI 53520  
OFFICE: (608) 897-2131 PARTS/SERVICE: (608) 897-2125 FAX: (608) 897-2561

**FRONT END PARTS**

3250/3300-TOW R092895

REF	PART NO	QTY	DESCRIPTION
31	171-951	1	Roller Chain; 60H-1-166 Pitch, W/Connector Link
32	171-919	1	Drain Plug; 1-1/4" PVC
33	171-585	2	Bearing; 1-3/8", FYH NANF 207-22 Or Equiv Mtg Hrd: 1/2" x 1-1/2" Bolt, LW & Nut (3 ea)
34	172-193	2	Locking Collar; 1-3/8"
35	136-042	1	Input Shaft; 1-3/8" x 15-1/4" (6 spline)
	134-372 <sup>A</sup>	1	Input Shaft; 1-3/8" x 15-1/2"
36	170-170 <sup>A</sup>	1	Key; #1210 Woodruff (3/8" x 1-1/4")
37	133-918	1	Sprocket; 60-B-14, 1-3/8" Bore, 3/8" Keyway
38	133-546	1	Seal; 1-3/8" ID x 2-1/2" OD
39	133-920	1	Belt; PTO Driveline Shield (1/8" x 9" x 16") Mtg Hrd: 5/16" x 3/4" Bolt & FLN (4 ea)
40	133-849	1	Safety Shield; Front Drive Mtg Hrd: 3/8" NC Wing Nut (171-929) & FW (12 ea)
41	171-935	15'	Front Shield Gasket; 3/8" x 3/4" Closed Cell Foam
42	172-046	A/R	Machine Bushing; 14 Ga, 2.5" ID x 3.5" OD
42	171-968	A/R	Machine Bushing; 10 Ga, 2.5" ID x 3.5" OD
43	134-366	1	Bearing Spacer
44	172-822	10	Compression Fitting; 1/8" NPT, Male
45	172-027	5	Nylon Tube; 3/16" OD (Requires Trimming)
46	172-823	4	Compression Fitting; 1/4" Straight Thread, Male
47	170-244	5	3/8" Flat Washer
48	172-024	5	Pipe Coupling; 1/8" NPT
49	170-865	5	Zerk Fitting; 1/8" NPT
50	134-756	1	Washer Seal
51	170-054	1	No Hay Max Kit Option; 1/2" x 1" Bolt, LN
52	172-986	3	Shear Bolt; 1/4" x 2" (grade 5)
53	170-069	3	Lock Nut; 1/4" (grade 5)

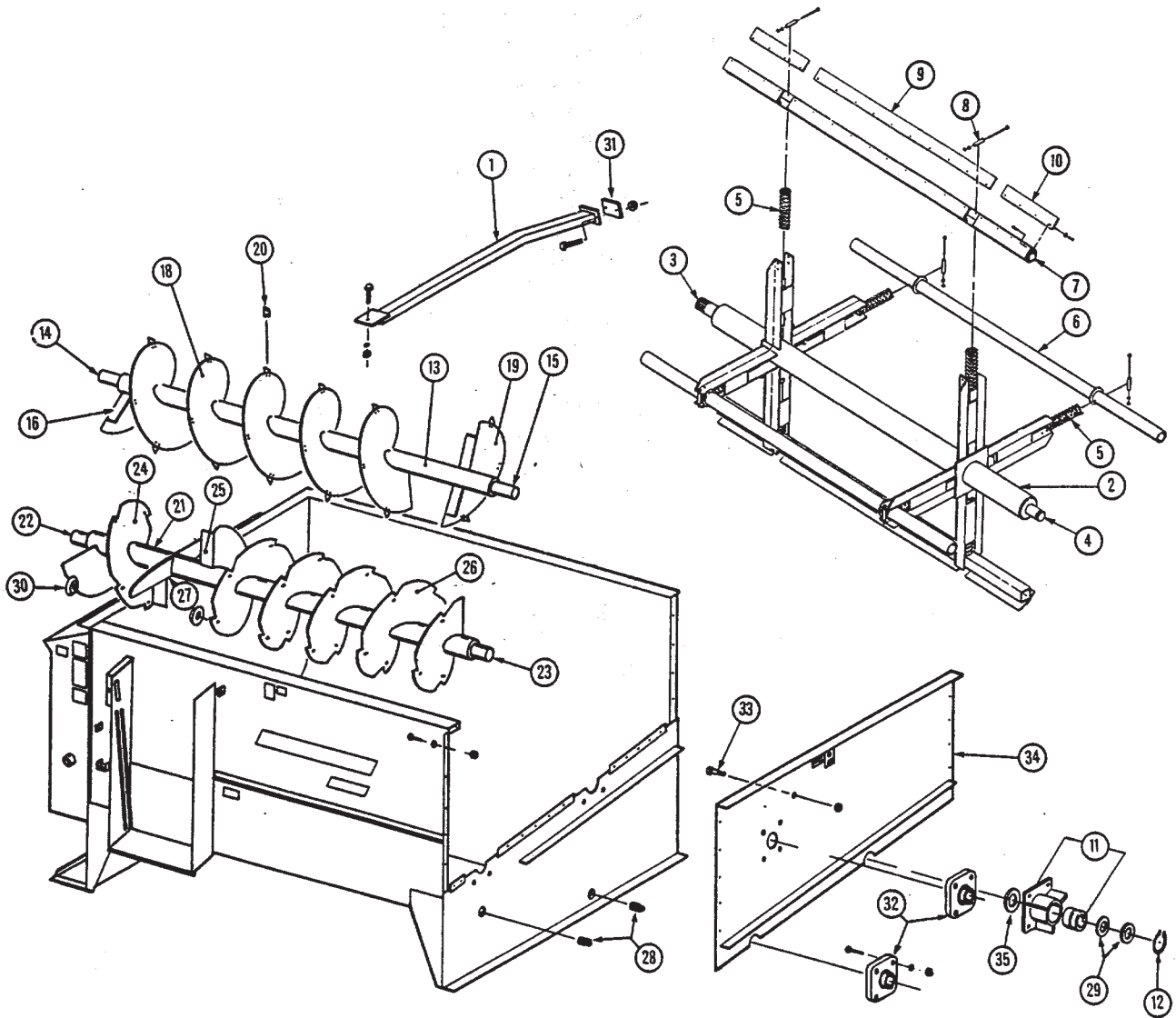
A: Input shaft used on units before serial number: (3250-527); (3300-1474). Use one (170-170) #1210 woodruff key (3/8" x 1-1/4") with the 134-372 input shaft for PTO mounting.

**2-SPIDER REEL & AUGER PARTS - 3250**

(For 3-spider reel parts, see pages 10-11)

3250/3300-TOW R011395

**Model 3250 Only**



**Model 3250 Only**

KNIGHT MANUFACTURING CORP. PO BOX 167 BROADHEAD, WI 53520  
OFFICE: (608) 897-2131 PARTS/SERVICE: (608) 897-2125 FAX: (608) 897-2561

**2-SPIDER REEL & AUGER PARTS - 3250**

3250/3300-TOW R050895

(For 3-spider reel parts, see pages 10-11)

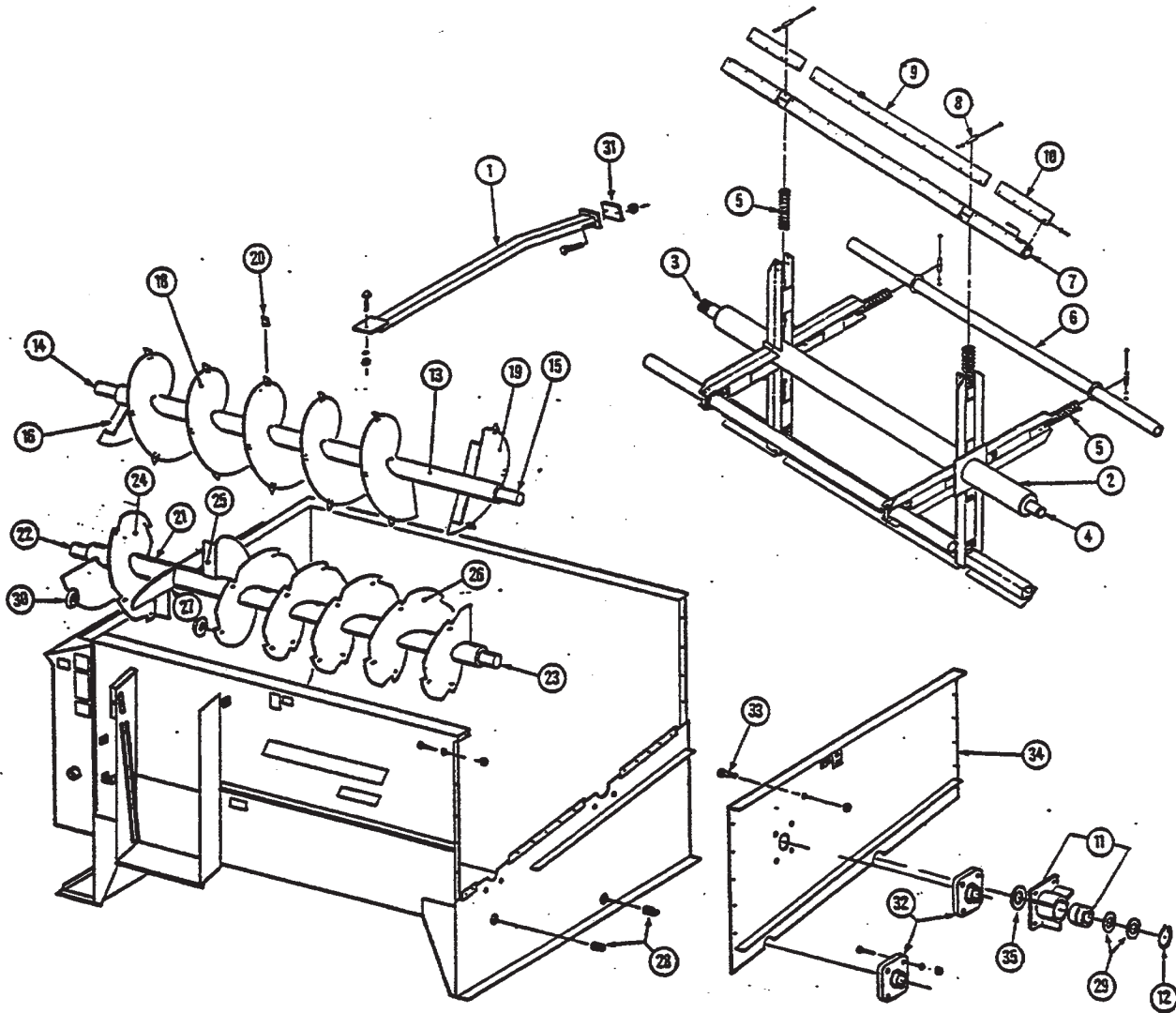
**Model 3250 Only**

REF	PART NO	QTY	DESCRIPTION
1	102-009	2	Bucket Guard Assembly Mtg Hrd: 3/8" x 1-1/4" Bolt, LW & Nut (3 ea)
2	102-243	1	Reel Weldment; 2-Spider
3	102-247	1	Front Plug Assembly
4	102-251	1	Rear Plug Assembly
5	171-920	8	Spring; Reel Cross Pipe Compression
6	102-245	2	Reel Cross Pipe
7	102-246	2	Cross Tube Wiper Assembly; Mtg Hrd: 3/8" x 5" Bolt, Lw, Nut
8	135-698	8	Retaining Sleeve
9	135-676	2	Plastic Wiper Blade; Long; Mtg Hrd: 1/4" x 7/8" Bolt; (171-083 Fw), Lw, Nut
10	135-675	4	Plastic Wiper Blade; Short; Mtg Hrd: Mtg Hrd: 1/4" x 7/8" Bolt; (171-083 Fw), Lw, Nut
11	102-260	1	Bearing Assembly; 2" Mtg Hrd: 5/8" x 1-3/4" Bolt, Lw, Nut
	135-701	1	Plastic Sleeve
12	170-142	1	Snap Ring; 2", Truarc 5100-200 Or Equiv
13	102-015	1	Upper Auger Assembly
14	101-731	1	Front Plug Assembly
15	101-708	1	Rear Plug Assembly
16	134-758	4	Flighting Brace
18	134-741	2	Flighting; 3/8" - 4" - 10" - 14" - 53" RH
19	133-833	1	Flighting; 1/4" - 4" - 14" - 14" x 7" LH
20	133-835	33	Knife Blade; Upper Auger (Qty May Vary) Mtg Hrd: 1/4" x 3/4" Bolt, LW & Nut (2 ea)
21	101-728	1	Lower Auger Assembly
22	101-869 <sup>A</sup>	1	Front Plug Assembly
23	101-708	1	Rear Plug Assembly
24	133-832	2	Flighting; 3/8" - 4" - 16" - 16" RH Actual Requirements: 1.5 Pcs
25	131-011	2	Flighting Support Brace
26	133-831	5	Flighting; 3/8" - 4" - 16" - 16" LH Actual Requirements: 4.7 Pcs
27	134-499	2	Paddle
28	171-919	2	Drain Plug; 1-1/4" PVC
29	171-048	A/R	Machine Bushing; .062" Thick
	171-049	A/R	Machine Bushing; .127" Thick (At least one 171-048 or 171-049 must be used)
30	134-351	18	Lower Auger Knife; (Qty May Vary) Mtg Hrd: 3/8" x 1" Bolt, LW & Nut
31	134-012	2	Bucket Guard Mount
32	170-000	2	Bearing; 1-3/8", FYH UCF 207-22E Or Equiv Mtg Hrd: 1/2" x 1-1/2" Bolt, LW & Nut (4 ea)
33	170-054	1	No Hay Max Kit Option; 1/2" x 1" Bolt, LN
34	102-258	1	Rear Panel (Upper)
35	135-699	1	Bearing Spacer; .125" Thick

A: Use 101-729 Before Serial Number 3250-285

An asterisk (\*) at the end of a part number (XXX-XXX\*) indicates that the part is no longer used in production for this application. Superscript letters (XXX-XXX<sup>A</sup>) refer to footnotes and/or illustration boxes.

**Model 3300 Only**



KNIGHT MANUFACTURING CORP. PO BOX 167 BRODHEAD, WI 53520  
OFFICE: (608) 897-2131 PARTS/SERVICE: (608) 897-2125 FAX: (608) 897-2561

(For 3-spider reel parts, see pages 10-11)

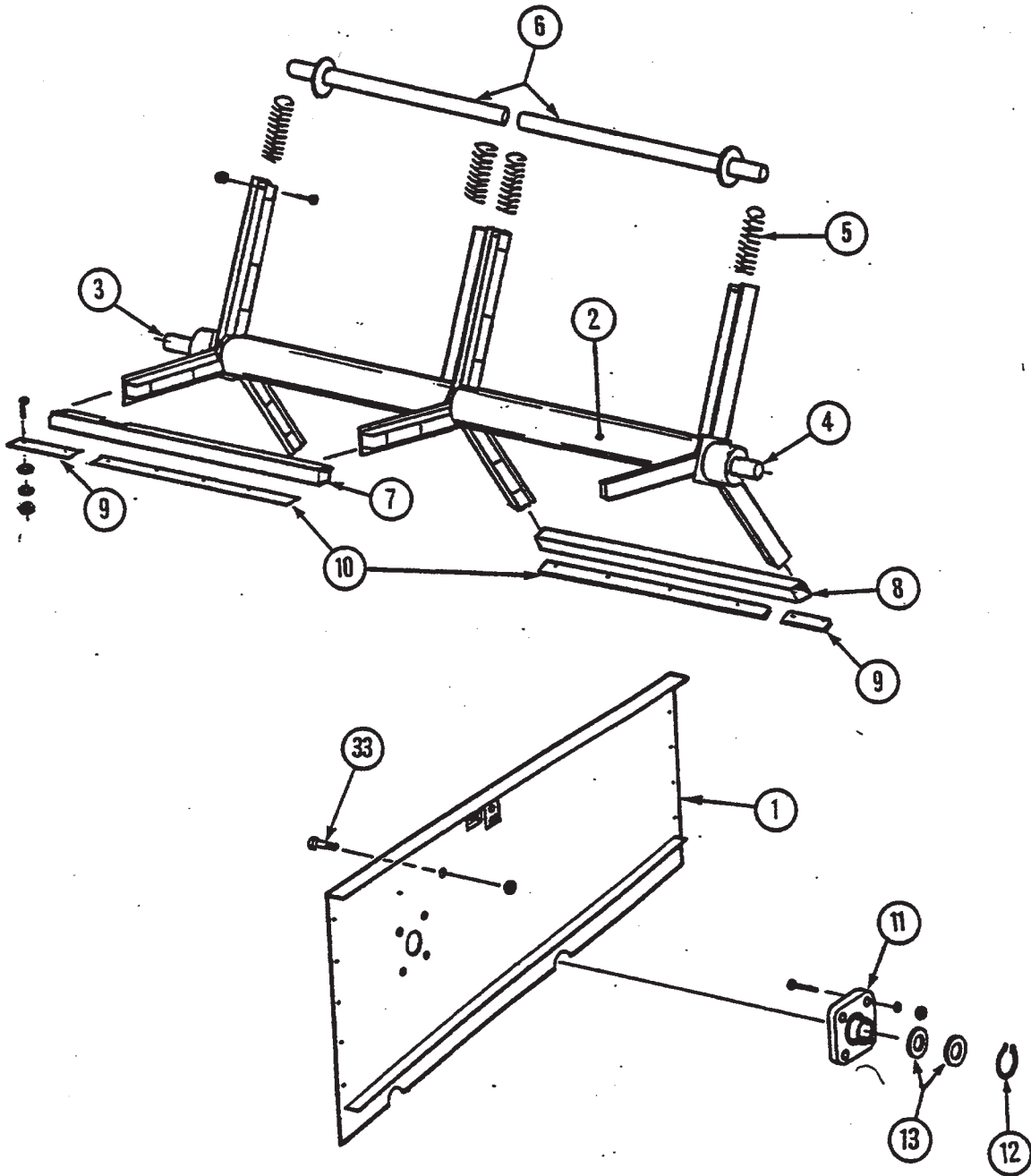
**Model 3300 Only**

REF	PART NO	QTY	DESCRIPTION
1	102-009	2	Bucket Guard Assembly Mtg Hrd: 3/8" x 1-1/4" Bolt, LW & Nut (3 ea)
2	102-244	1	Reel Weldment
3	102-247	1	Front Plug Assembly
4	102-251	1	Rear Plug Assembly
5	171-920	8	Spring; Reel Cross Pipe Compression
6	102-252	2	Reel Cross Pipe; Mtg Hrd: 3/8" x 5" Bolt, Lw, Nut
7	102-253	2	Cross Tube Wiper Assembly; Mtg Hrd: 3/8" x 5" Bolt, Lw, Nut
8	135-698	8	Retaining Sleeve
9	135-677	2	Plastic Wiper Blade; Long; Mtg Hrd: 1/4" x 7/8" Bolt, (171-083 Fw), Lw, Nut
10	135-675	4	Plastic Wiper Blade; Short; Mtg Hrd: 1/4" x 7/8" Bolt, (171-083 Fw), Lw, Nut
11	102-260	1	Bearing Assy.; 2" Mtg Hrd: Mtg Hrd: 5/8" x 1-3/4" Bolt, Lw, Nut
	135-701	1	Plastic Sleeve
12	170-142	1	Snap Ring; 2", Truarc 5100-200 Or Equiv.
13	102-010	1	Upper Auger Assembly
14	101-731	1	Front Plug Assembly
15	101-708	1	Rear Plug Assembly
16	134-758	4	Flighting Brace
18	134-742	1	Flighting; 3/8" - 4" - 10" - 14" x 126.5" RH
19	133-833	1	Flighting; 1/4" - 4" - 14" - 14" x 7" LH
20	133-835	47	Knife Blade; Upper Auger (Qty May Vary) Mtg Hrd: 1/4" x 3/4" Bolt, LW & Nut (2 ea)
21	101-871	1	Lower Auger Assembly
22	101-869	1	Front Plug Assembly
23	101-708	1	Rear Plug Assembly
24	133-832	2	Flighting; 3/8" - 4" - 16" - 16" RH Actual Requirements: 1.5 Pcs
25	131-011	2	Flighting Support Brace
26	133-831	7	Flighting; 3/8" - 4" - 16" - 16" LH Actual Requirements: 6.75 Pcs
27	134-499	2	Paddle
28	171-919	2	Drain Plug; 1-1/4" PVC
29	171-048	A/R	Machine Bushing; .062" Thick
	171-049	A/R	Machine Bushing; .127" Thick (At least one 171-048 or 171-049 must be used)
30	134-351	22	Lower Auger Knife; (Quantity May Vary) Mtg Hrd: 3/8" x 1" Bolt, LW & Nut
31	134-012	2	Bucket Guard Mount
32	170-000	2	Bearing; 1-3/8", FYH UCF 207-22E Or Equiv Mtg Hrd: 1/2" x 1-1/2" Bolt, LW & Nut (4 ea)
33	170-054	1	No Hay Max Kit Option; 1/2" x 1" Bolt, LN
34	102-258	1	Rear Panel (upper)
35	135-699	1	Bearing Spacer

An asterisk (\*) at the end of a part number (XXX-XXX\*) indicates that the part is no longer used in production for this application. Superscript letters (XXX-XXX<sup>a</sup>) refer to footnotes and/or illustration boxes.

**3-SPIDER REEL PARTS 3250 & 3300**  
(Use before serial number 3250-476; 3300-1135)

3250/3300-TOW R011395



KNIGHT MANUFACTURING CORP. PO BOX 167 BROADHEAD, WI 53520  
OFFICE: (608) 897-2131 PARTS/SERVICE: (608) 897-2125 FAX: (608) 897-2561

**3-SPIDER REEL PARTS 3250 & 3300**  
 (Use before serial number 3250-476; 3300-1135)

3250/3300-TOW R011395

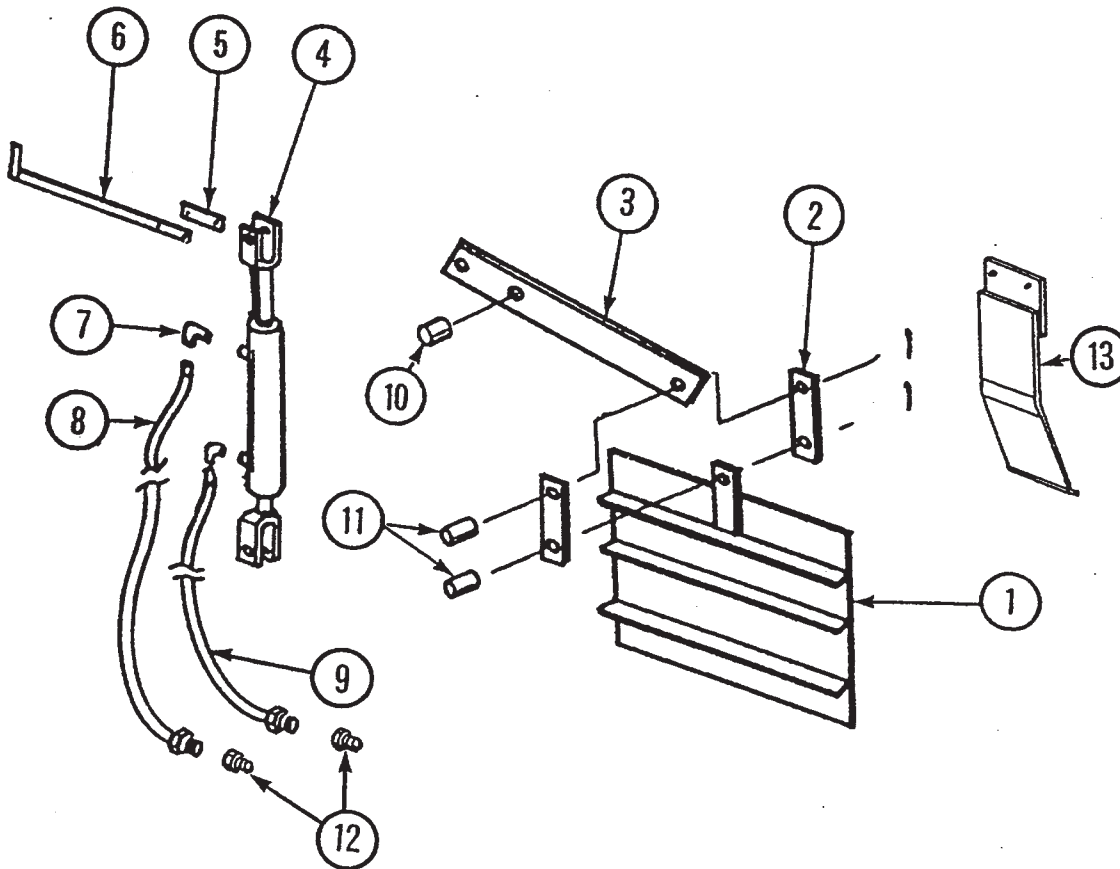
REF	PART NO	QTY	DESCRIPTION
1	101-720	1	Rear Panel Assembly ( <i>upper 3250 and 3300</i> )
2	101-809	1	Reel Weldment ( <i>3250 only</i> )
	101-868	1	Reel Weldment ( <i>3300 only</i> )
3	101-724	1	Front Plug Assembly
4	101-723	1	Rear Plug Assembly
5	171-920	12	Spring; Reel Cross Pipe Compression ( <i>3250 and 3300</i> )
6	101-763	4	Reel Cross Pipe; 2-7/8" OD, 52" Long ( <i>3250 only</i> )
	101-815	4	Reel Cross Pipe; 2-7/8" OD, 64" Long ( <i>3300 only</i> ) Mtg Hrd: 3/8" x 4-1/2" Bolt & Locknut (1 ea)
7	101-802	1	Front Cross Tube Wiper Assembly ( <i>3250 only</i> )
	101-804	1	Front Cross Tube Wiper Assembly ( <i>3300 only</i> )
8	101-803	1	Rear Cross Tube Wiper Assembly ( <i>3250 only</i> )
	101-784	1	Rear Cross Tube Wiper Assembly ( <i>3300 only</i> )
9	134-123	2	Plastic Wiper Blade; 8-1/2" Long ( <i>3250 and 3300</i> ) Mtg Hrd: 1/4" x 7/8" Bolt, LW, FW & Nut (2 ea)
10	134-124	2	Plastic Wiper Blade; 43-3/8" Long ( <i>3250 only</i> )
	134-112	2	Plastic Wiper Blade; 55-3/8" Long ( <i>3300 only</i> ) Mtg Hrd: 1/4" x 7/8" Bolt, LW, FW & Nut (10 ea)
11	170-008	1	Bearing; 2", FYH UCF X10-32E L-III Or Equiv Mtg Hrd: 5/8" x 1-3/4" Bolt, LW & Nut (4 ea)
12	170-142	1	Snap Ring; 2", Truarc 5100-200 Or Equiv
13	171-048	A/R	Machine Bushing; .062" Thick
13	171-049	A/R	Machine Bushing; .127" Thick ( <i>Machine bushings are as spacers used between the rear bearing and the snap ring.</i> )

An asterisk (\*) at the end of a part number (XXX-XXX\*) indicates that the part is no longer used in production for this application. Superscript letters (XXX-XXX<sup>A</sup>) refer to footnotes and/or illustration boxes.

**DOOR PARTS**

3250/3300-TOW R011395

REF	PART NO	QTY	DESCRIPTION
1	101-722	1	Door Assembly
2	133-445	2	Door Linkage Bar; 3/8" x 2" x 8"
3	133-924	1	Door Pivot Bar; 5/8" x 4" x 31"
4	170-941	1	Hyd Cylinder; 2" x 8" (Seal Kit #170-075)
5	133-978	1	Door Gauge Mount; 1/8" x 5/8" x 3-1/4"
6	133-977	1	Door Gauge; 1/8" x 5/8" x 18-1/2" Mtg Hrd: 1/4" x 1" Bolt, LW & Nut (2 ea)
7	171-030	2	Swivel Adapter; 3/8" - 90 Degrees
8	170-471	1	Hyd Hose; 1/4" x 170" Overall Length
9	170-468	1	Hyd Hose; 1/4" x 162" Overall Length
10	170-073	1	Pin (1" Dia) For Door Pivot Bar (133-924) Secures With 170-074 Hairpin Clip
11	171-696	2	Pin For Door Linkage Bar (133-445) Secures With 170-236 (5/32" x 1-1/2" Ctr. Pin)
12	170-235	2	Reducer Bushing; 1/2" To 3/8"
13	300-022	A/R	Door Flow Control Plate Kit (Optional, Max Qty 2) Mtg. Hrd: 5/16" x 1" Bolt, LW & Nut, 5/16" x 1-1/4" Bolt, LW & Nut (2 ea)

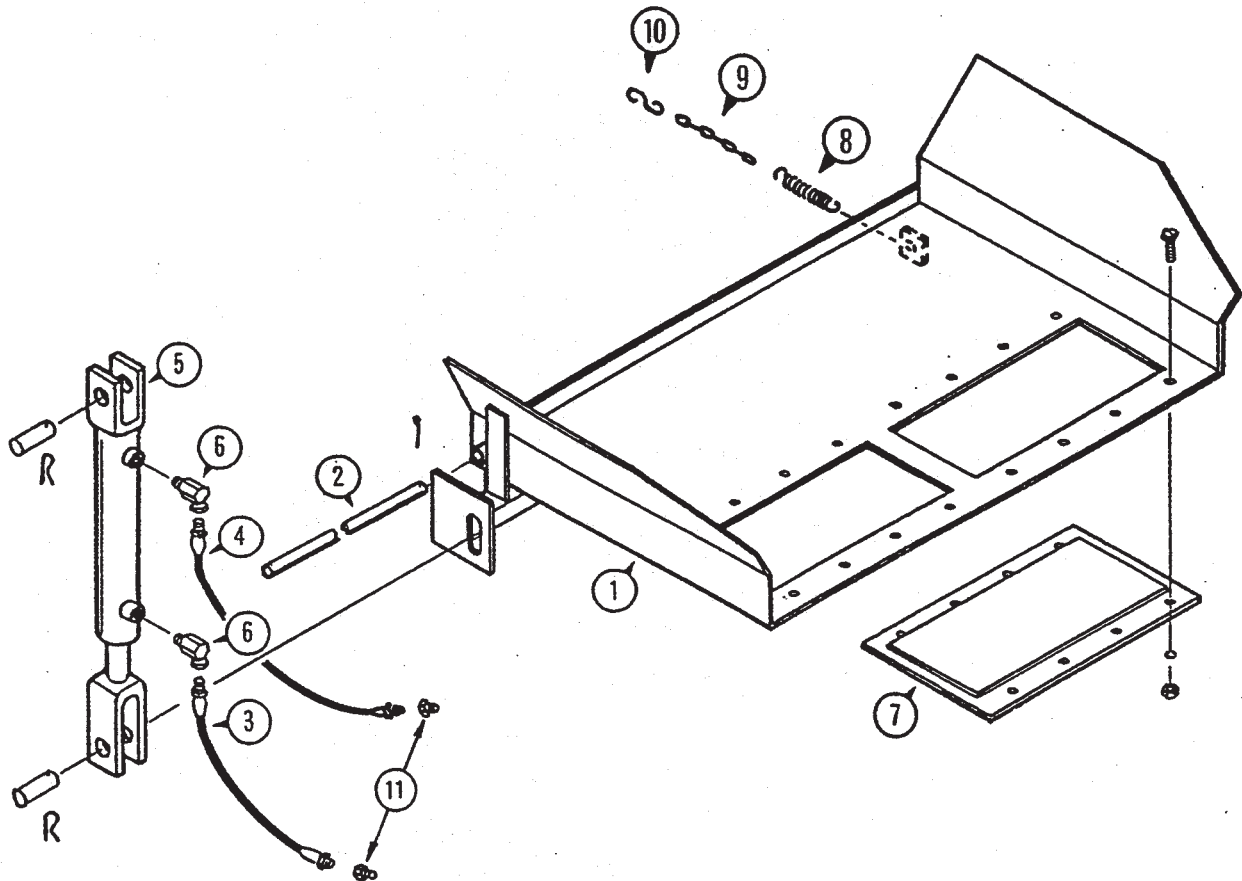


KNIGHT MANUFACTURING CORP. PO BOX 167 BRODHEAD, WI 53520  
 OFFICE: (608) 897-2131 PARTS/SERVICE: (608) 897-2125 FAX: (608) 897-2561

**SLIDE TRAY PARTS**

3250/3300-TOW R011395

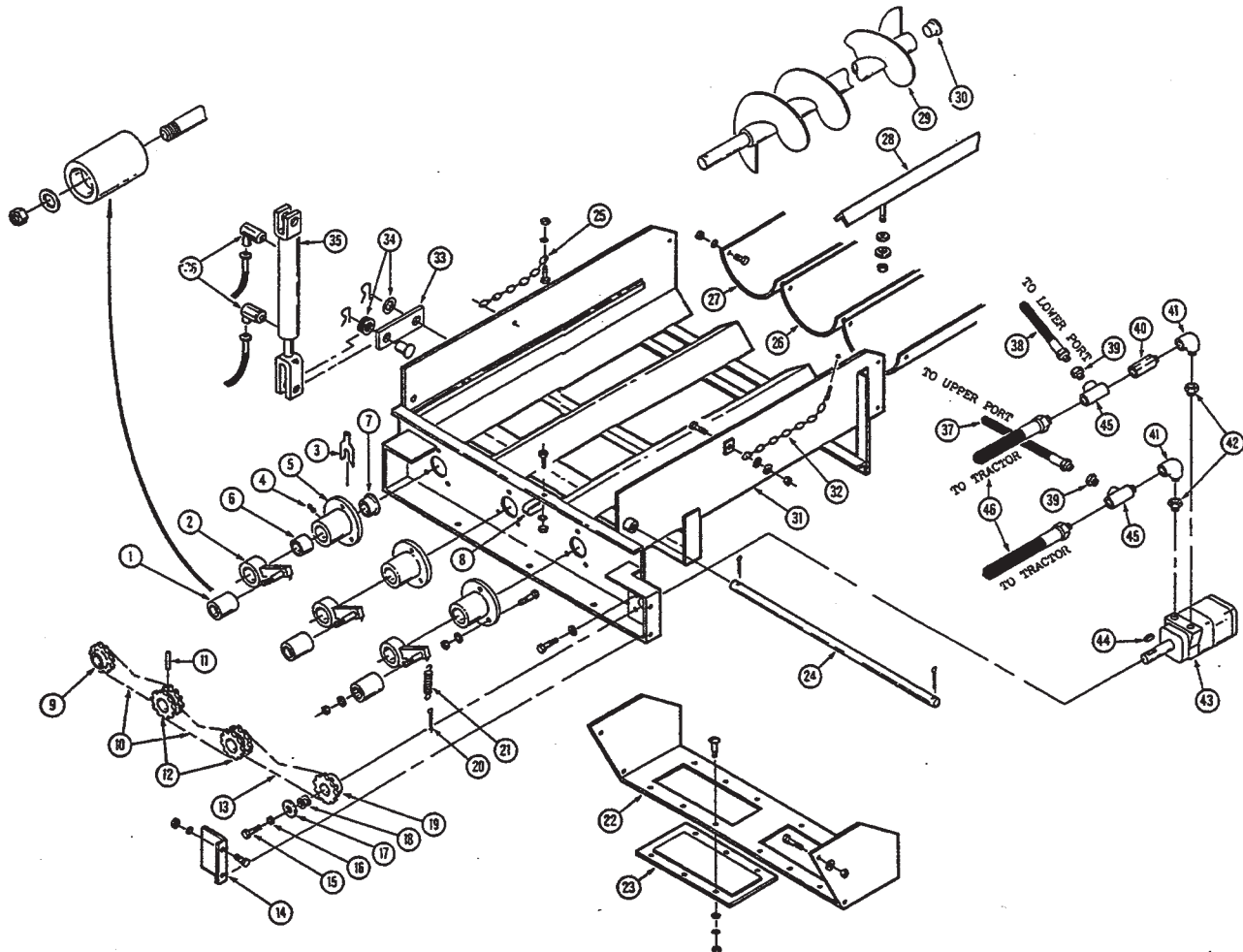
REF	PART NO	QTY	DESCRIPTION
1	101-747	1	Slide Tray Assembly (See Decal Section For Decals)
2	133-951	1	Tray Mtg Rod; 3/4" x 39.5" Long Mtg Hrd: 170-115 Cotter Pin (2 ea)
3	170-468	1	Hydraulic Hose Assy; 1/4" x 162" Overall Length
4	170-471	1	Hydraulic Hose Assy; 1/4" x 170" Overall Length
5	170-941	1	Hydraulic Cylinder; 2" x 8" (Seal Kit #170-075)
6	171-030	2	Swivel Connector; 3/8" - 90 Degree
7	171-937	2	Magnet Mtg Hrd: 1/4" x 3/4" Truss Head Bolt, LW, FW & Nut (12 ea)
8	172-005	1	Spring
9	171-032	1	Machine Chain; #4 x 10 Link
10	170-947	1	S-HHook



An asterisk (\*) at the end of a part number (XXX-XXX\*) indicates that the part is no longer used in production for this application. Superscript letters (XXX-XXX<sup>A</sup>) refer to footnotes and/or illustration boxes.

**POWER CHUTE PARTS**

3250/3300-TOW R011395



**POWER CHUTE PARTS**

REF	PART NO	QTY	DESCRIPTION
	101-896	1	Complete Chute Assembly
1	134-395	3	Poly Block Mtg Hrd: 5/8" LW & Jam Nut
2	101-231	3	Chain Tightener Arm
3	171-265	A/R	Shim; .017" Thick
	171-266	A/R	Shim; .030" Thick
4	170-865	3	Zerk; 1/8" NPT
5	101-227	3	Auger Bearing Assy; Mtg Hrd: 1-3/8" x 1" Bolt, LW, Nut (3 ea)

KNIGHT MANUFACTURING CORP. PO BOX 167 BROADHEAD, WI 53520  
 OFFICE: (608) 897-2131 PARTS/SERVICE: (608) 897-2125 FAX: (608) 897-2561

**POWER CHUTE PARTS**

3250/3300-TOW R093097

REF	PART NO	QTY	DESCRIPTION
6	171-259	1	Bushing; Bronze, 1-3/8" I.D.
7	171-260	1	Bushing; Bronze 1-3/8" I.D. Flanged
8	171-782	1	Double Hose Clamp; Mtg Hrd: 5/16" x 3/4" Bolt, LW & Nut
9	132-701	1	Sprocket; 50-B-18, 1-3/8" Bore
10	171-932	2	Roller Chain; 50-1-56 Pitch
11	171-297	3	Roll Pin; 1/4" x 2-1/2"
12	134-390	2	Sprocket; 50-2R-18, 1-3/8" Bore
13	171-178	1	Roller Chain; 50-1-48 Pitch
14	134-394	1	Motor Drive Shield; Mtg Hrd: 5/16" x 3/4" Bolt, LW & Nut (2 ea)
15	170-262	1	Bolt; 5/16" x 3/4" Hex Head
16	170-118	1	Washer; 5/16" Lock
17	170-302	1	Washer; 3/8" Heavy
18	171-576	1	Machine Washer
19	134-389	1	Sprocket; 50-B-18, 1" Bore, Inc. 170248 S.S.
20	170-056	3	Cotter Pin; 1/4" x 2"
21	170-110	3	Spring
22	101-737	1	Tipoff Assembly; Mtg Hrd: 5/16" x 3/4" Bolt, LW & Nut (4 ea)
23	171-937	2	Magnet Mtg Hrd: 1/4" x 3/4" Truss Head Bolt, LW, FW & Nut (6 ea)
24	133-951	1	Tipoff Pivot Rod Mtg Hrd: 170-115 Cotter Pin (2 ea)
25	171-938	1	Chain; 4/0 Coil x 21 Link Mtg Hrd: 3/8" x 1" Bolt, (FW), LW & Nut , 5/16" x 1" Truss Head Bolt, FW, LW, Nut (1 ea)
26	133-943	1	Plastic Chute Liner - Center
27	133-942	2	Plastic Chute Liner - Side Mtg Hrd: 1/4" x 3/4" Truss Head Bolt, LW & Nut (2 ea)
28	101-738	2	Liner Hold-Down Assy Mtg Hrd: 1/2" Nut Gr 8, 3/8" FW, 3/8" LockNut (2 ea)
29	101-736	3	Auger Assy
30	171-186	3	Plastic Cap Plug; #16
31	101-897	1	Chute Weldment
32	101-739	1	Chute Restraint Chain Assy; Mtg Hrd: 5/16" x 1" Truss Head Bolt, FW, LW & Nut & 3/8" Fw, LN
33	133-952	1	Chute Cylinder LinkageBar; Mtg Hrd: 170-074 Hairpin Clip (2 ea)
34	170-122	5	Spacer Washer; 1" Sae Flat
● 35	<del>170-161</del> 173-220	1	Hydraulic Cylinder; 2" x 18" (Seal Kit #170-075)
36	171-030	2	Swivel Adapter; 3/8" x 90 Degree
37	171-427	1	Hyd Hose; 1/4" x 82" Overall Length
38	171-940	1	Hyd Hose; 1/4" x 64" Overall Length
39	170-235	2	Reducer Bushing; 1/2" to 3/8"
40	171-151	1	Line Check Valve; 1/2"
41	171-136	2	90 Degree Street Elbow; 1/2"
42	171-668	2	Straight Thread Adapter
43	171-666	1	Hyd Motor; 12 cu. in. (Seal Kit #171-257) Mtg Hrd: 3/8" x 7/8" Bolt, LW (4 ea)
44	171-883	1	Key; 1/4" x 1/4" x 1" Long
45	170-859	2	Service Tee; 1/2"
46	171-330	2	Hyd Hose; 1/2" x 168" Overall Length

An asterisk (\*) at the end of a part number (XXX-XXX\*) indicates that the part is no longer used in production for this application. Superscript letters (XXX-XXX<sup>A</sup>) refer to footnotes and/or illustration boxes.

**SELECTOR VALVE - SLIDE TRAY OPTION**

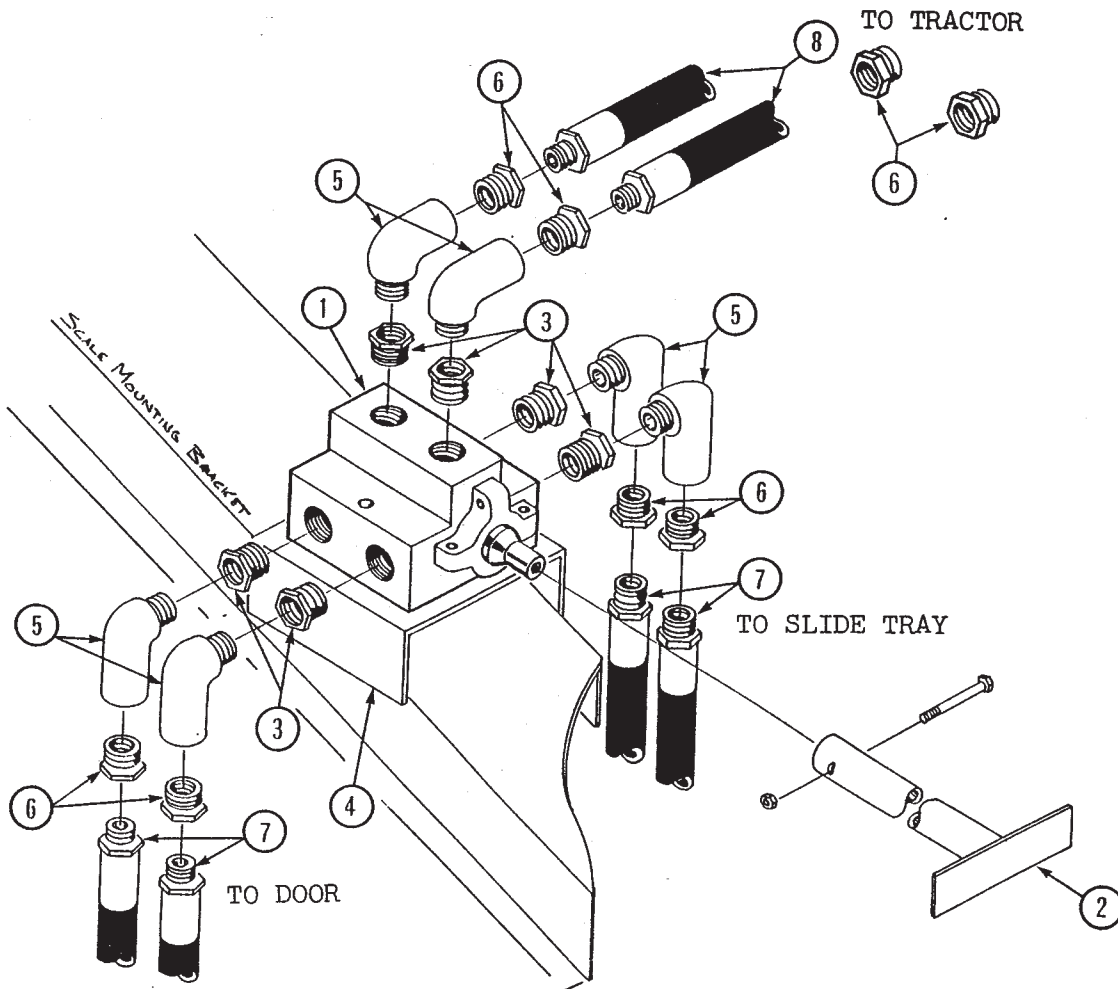
3250/3300-TOW R011395

**FACTORY INSTALLED PARTS:**

REF	PART NO	QTY	DESCRIPTION
1	101-891	1	Selector Valve Assy W/Sleeve (Seal Kit #172-784) Mtg Hrd: 3/8" x 3" Bolt and FW, LW, & Nut (2 ea)
2	101-791	1	Control Handle Assy Mtg Hrd: 1/4" x 1-1/2" Bolt & LN
3	171-430	6	Reducer Bushing; 3/4" Male To 1/2" Female
4	134-136	1	Mounting Bracket Mtg Hrd: 5/16" x 3/4" Bolt, LW & Nut (4 ea)
5	171-136	6	Street Elbow; 1/2" - 90 Degree
6	170-235	8	Reducer Bushing; 1/2" Male To 3/8" Female
7	170-465	4	Hyd Hose 1/4" x 127"
8	171-998	2	Hyd Hose 1/4" x 117"

**FIELD INSTALLATION NOTE:**

The field installation kit (P/N 300-010) contains all of the above parts except for four reducer bushings (P/N 170-235) and four hydraulic hoses (P/N 170-465).



**DIVERTER VALVE - POWER CHUTE OPTION**

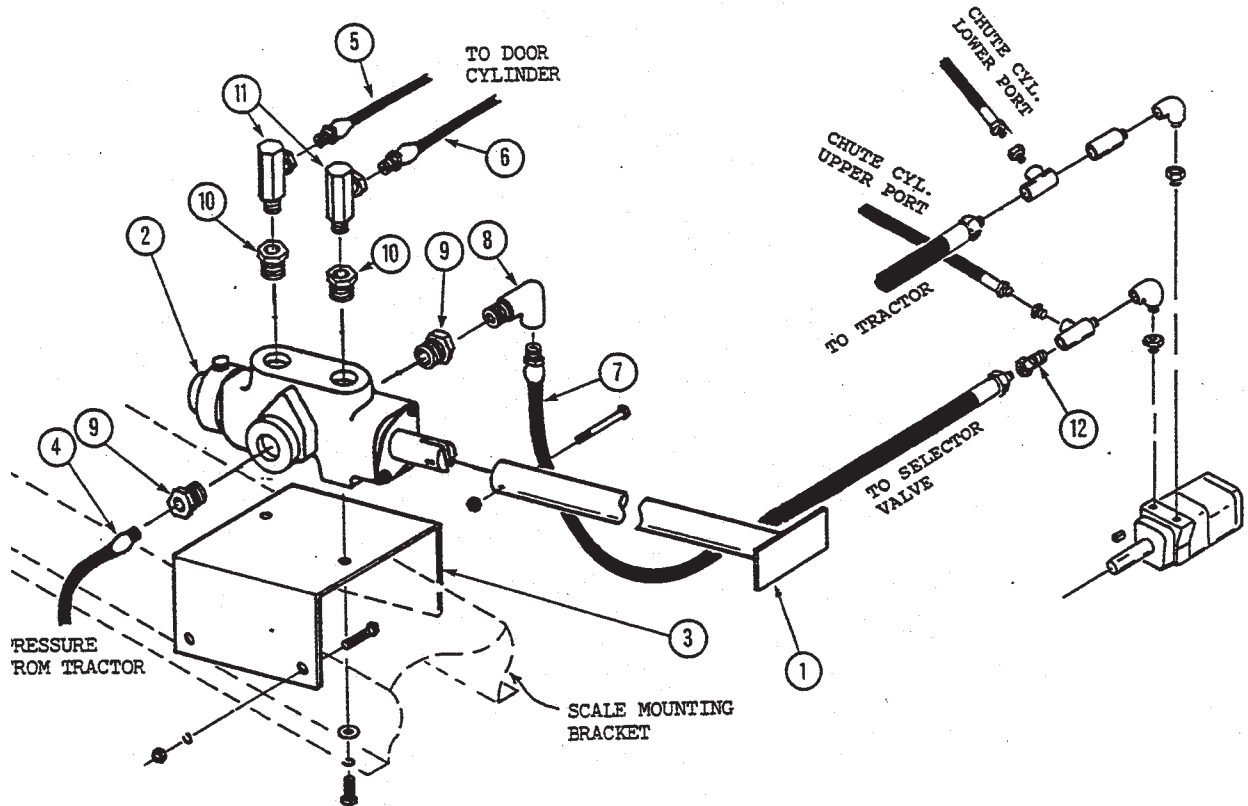
3250/3300-TOW R011395

**FACTORY INSTALLED PARTS:**

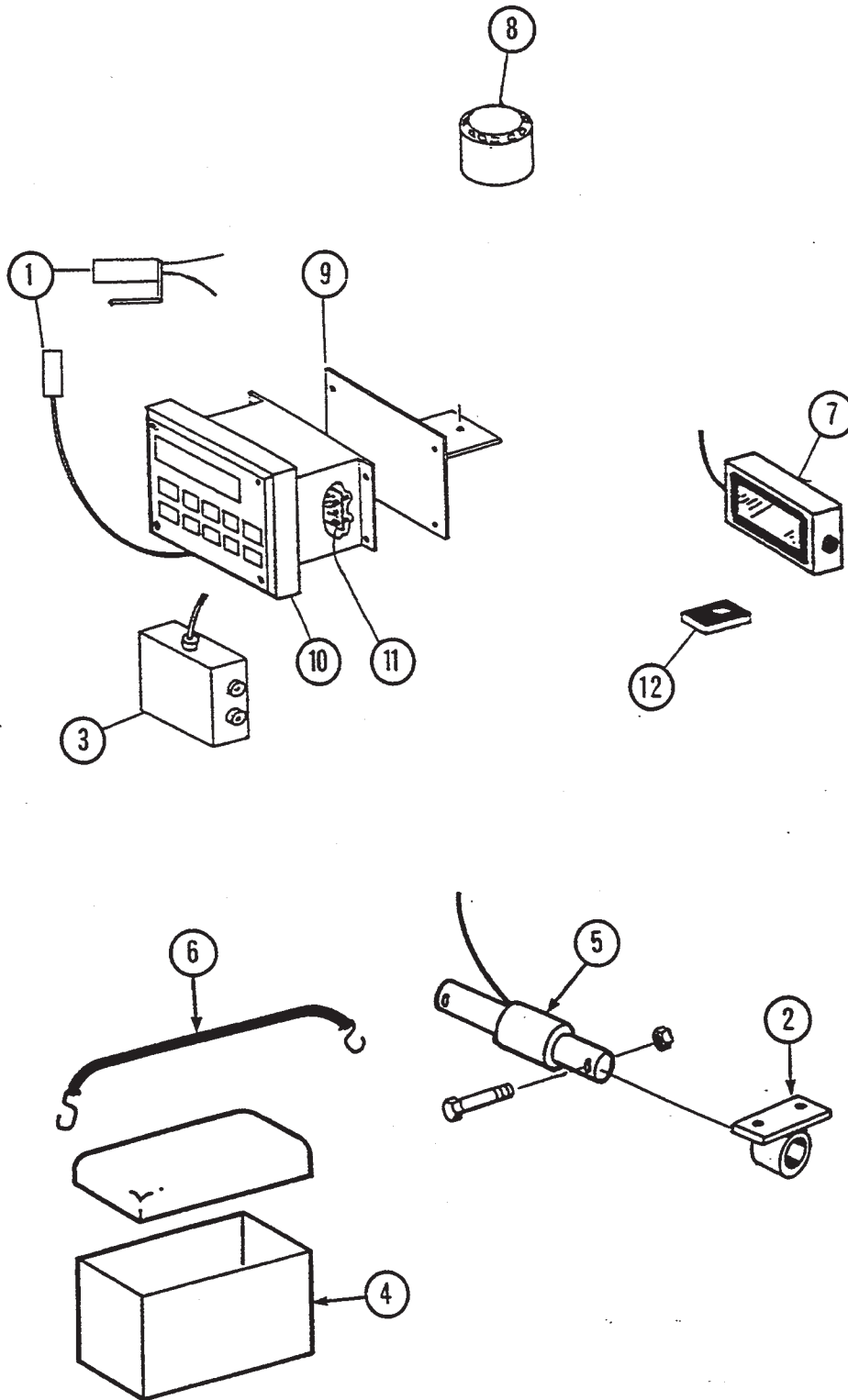
REF	PART NO	QTY	DESCRIPTION
1	101-791	1	Control Handle Assy; Mtg Hrd: 1/4" x 1-1/2" Bolt & LN
2	171-424	1	Diverter Valve Assy (Seal Kit #171-847) Mtg Hrd: 3/8" x 7/8" Bolt, FW, LW, Nut (2 ea)
3	134-136	1	Mounting Bracket; Mtg Hrd; 5/16" x 3/4" Bolt, LW, Nut (4 ea)
4	171-426	1	Hyd Hose; 1/2" x 96" Long 1/2" Ends
5	170-465	1	Hyd Hose; 1/4" x 127" Long 3/8" Ends
6	171-998	1	Hyd Hose; 1/4" x 117" Long 3/8" Ends
7	171-189	1	Hyd Hose; 1/2" x 108" Long 1/2" Ends
8	171-136	1	Connector; Elbow 1/2" - 90 Degree
9	171-430	2	Connector; Reducer 3/4" To 1/2"
10	170-235	2	Connector; Reducer 1/2" To 3/8"
11	171-030	2	Connector; Swivel 3/8" - 90 Degree
12	170-513	1	Connector; Swivel 1/2" Straight

**FIELD INSTALLATION NOTE:**

The field installation kit (P/N 300-006) contains all of the above parts except for references 5 - 7 (Field kit doesn't include 170-465, 171-998 and 171-189).



An asterisk (\*) at the end of a part number (XXX-XXX\*) indicates that the part is no longer used in production for this application. Superscript letters (XXX-XXX<sup>A</sup>) refer to footnotes and/or illustration boxes.



KNIGHT MANUFACTURING CORP. PO BOX 167 BRODHEAD, WI 53520  
OFFICE: (608) 897-2131 PARTS/SERVICE: (608) 897-2125 FAX: (608) 897-2561

**EATON MODELS 99B & 99S SCALE PARTS**

3250/3300-TOW R011395

REF	PART NO	QTY	DESCRIPTION
1	170-415	1	Plug - Tractor Mount
1	172-333	1	Power Cord Assembly
2	101-742	4	Weigh Bar Mount Spool Mtg Hrd To Unit: 5/8" x 1-3/4" Gr 5 Bolt, FW & LN (2 ea)
3	172-335	1	Junction Box With 15' Cord; Mtg Hrd: #10 x 3/4" Machine Screw (4 ea)
4	171-158	1	Battery Box With Cover; #10 x 3/4" Machine Screw (4 ea.)
5	171-557	2	Weigh Bar; 2-1/8" Dia, 15' Cord Length (Front)
5	171-558	2	Weigh Bar; 2-1/8" Dia, 30' Cord Length (Rear)
	171-960		Splice Kit - For Weigh Bar Cord Repair
6	171-936	1	Battery Hold-Down Strap; Mtg Hrd: "S" Hooks (2 ea) Mtg Hrd: 5/16" x 1-1/4" Bolt, Nut & FLN (1 ea.) , FW (2)
7	172-336	1	Remote Display With 30' Cable
8	101-916	1	Alarm Horn Assembly Mtg Hrd: #6 x 3/4" Bolt, LW & Nut (2 ea)
9	133-378	1	Indicator Mount Mtg Hrd: 170-238 Spring, 3/8" x 2" Bolt, FW & LN
	171-380	2	Battery Terminal

**Items Used With Model 9TL Only:**

10	172-499	1	Indicator Model 9TL (2-1/8" OR 2-1/2" Weigh Bar) Mtg Hrd: 3/8" x 1" Bolt, LN (1 ea.)
	172-498	1	Operator's Manual; Model 9TL (133-378 Mount Not Req'd), ( 170-238 Spring Not Req'd)

**Items Used With Model 99B Only:**

10	172-329	1	Indicator; Model 99B (2-1/8" or 2-1/2" Weigh Bars) Mtg Hrd: 1/4" x 3/4" Bolt, FW, LW & Nut (4 ea)
	172-339	1	Operator's Manual; Model 99B

**Items Used With Model 99S Only:**

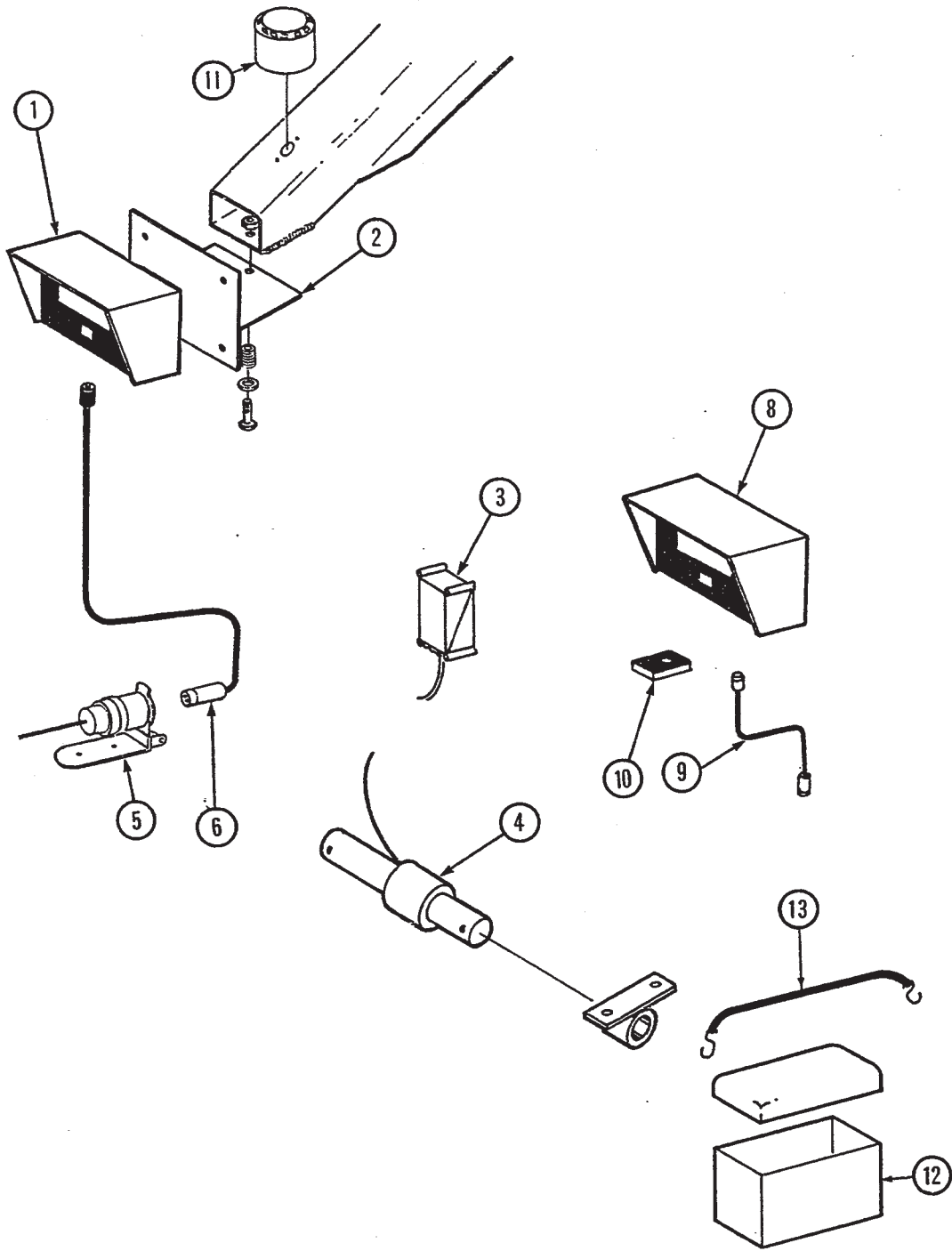
10	172-331	1	Indicator; Model 99S (2-1/8" or 2-1/2" Weigh Bars) Mtg Hrd: 1/4" x 3/4" Bolt, FW, LW & Nut (4 ea)
	172-340	1	Operator's Manual; Model 99S
11	172-337 <sup>A</sup>	1	Radio Control Package
12	172-338	1	Transmitter; Radio Control

**Service Tools:**

	172-386	1	Precision Calibrator For Scale Indicators
--	---------	---	---

A: Indicator must be sent to Knight Mfg. for radio control card installation.

An asterisk (\*) at the end of a part number (XXX-XXX\*) indicates that the part is no longer used in production for this application. Superscript letters (XXX-XXX<sup>A</sup>) refer to footnotes and/or illustration boxes.



KNIGHT MANUFACTURING CORP. PO BOX 167 BRODHEAD, WI 53520  
OFFICE: (608) 897-2131 PARTS/SERVICE: (608) 897-2125 FAX: (608) 897-2561

**J-STAR SCALE PARTS**

3250/3300-TOW R011395

REF	PART NO	QTY	DESCRIPTION
1	172-128	1	Model EZ-150 Indicator For 2-1/8" Weigh Bar
	172-130	1	Model EZ-210 Indicator For 2-1/8" Weigh Bar
	172-500	1	Model EZ-320 Indicator For 2-1/8" Weigh Bar
	172-800	1	Model EZ-View 150 Indicator, 1.7" Display For 2-1/8" Weigh Bar Mtg Hrd: 1/4" x 3/4" Bolt, FW, LW & Nut (2 ea)
2	101-835	1	Indicator Mount Mtg Hrd: Spring (170-238) 3/8" x 2" Bolt, FW & LN
3	172-134	1	Junction Box; 10-32 x 3/4" PHMS, LW, FW, Nut (4 ea)
4	172-138	4	Weigh Bar; 2-1/8" Dia
	171-960		Splice Kit - For Weigh Bar Cord Repair
5	170-415	1	Plug - Tractor Mount
6	172-354	1	Power Cord Assy

**Optional Items:**

8	172-801	1	EZ-View Remote, 1.7" Display w/ 25' Cord
	172-802	1	EZ-View TR Remote, 1.7" Display w/ Transmitter & 25' Cord
	172-803	1	EZ-R Remote, 1" Display w/ 25' Cord
	172-804	1	EZ-R Remote, 1" Display w/ Transmitter & 25' Cord
9	172-142	1	Cable for P/N 172-140 & 172-141
10	172-143	1	Extra Transmitter For Model 20R\TR
	172-165	1	30' J-Box Extension Cable (Optional)
	172-166	1	10' J-Box Extension Cable (Optional)
11	101-917	1	Alarm Horn Assembly Mtg Hrd: #6 x 3/4" Bolt, LW & Nut (2 ea)
12	171-158	1	Battery Box
13	171-936	1	Battery Hold-Down Strap; 1-1/4" x 5/16" Bolt (1), FW (2), 5/16 Nut & FLN (1 ea); "S" Hooks (2 ea)
	171-380	2	Battery Terminals

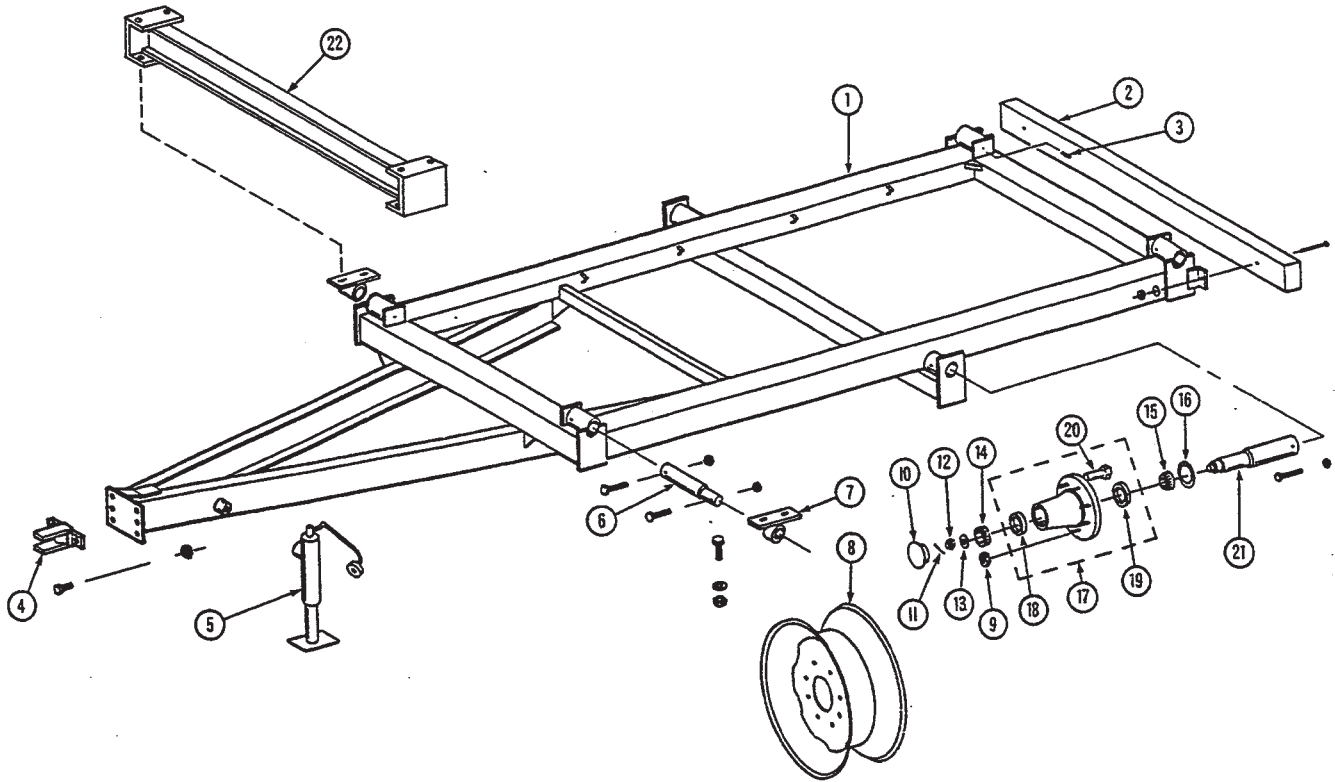
**Service Tools:**

172-386	1	Precision Calibrator For Scale Indicators
---------	---	---

An asterisk (\*) at the end of a part number (XXX-XXX\*) indicates that the part is no longer used in production for this application. Superscript letters (XXX-XXX<sup>A</sup>) refer to footnotes and/or illustration boxes.

**UNDERCARRIAGE ASSEMBLY**

3250/3300-TOW R011395



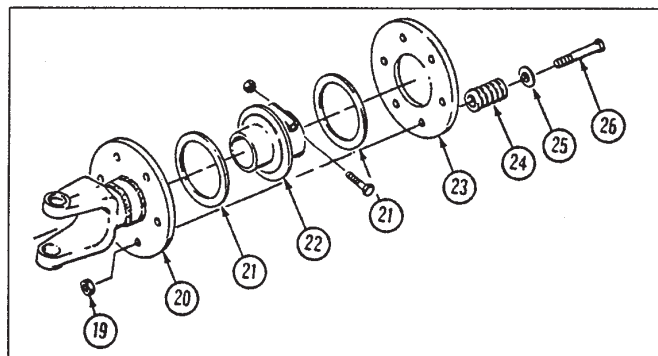
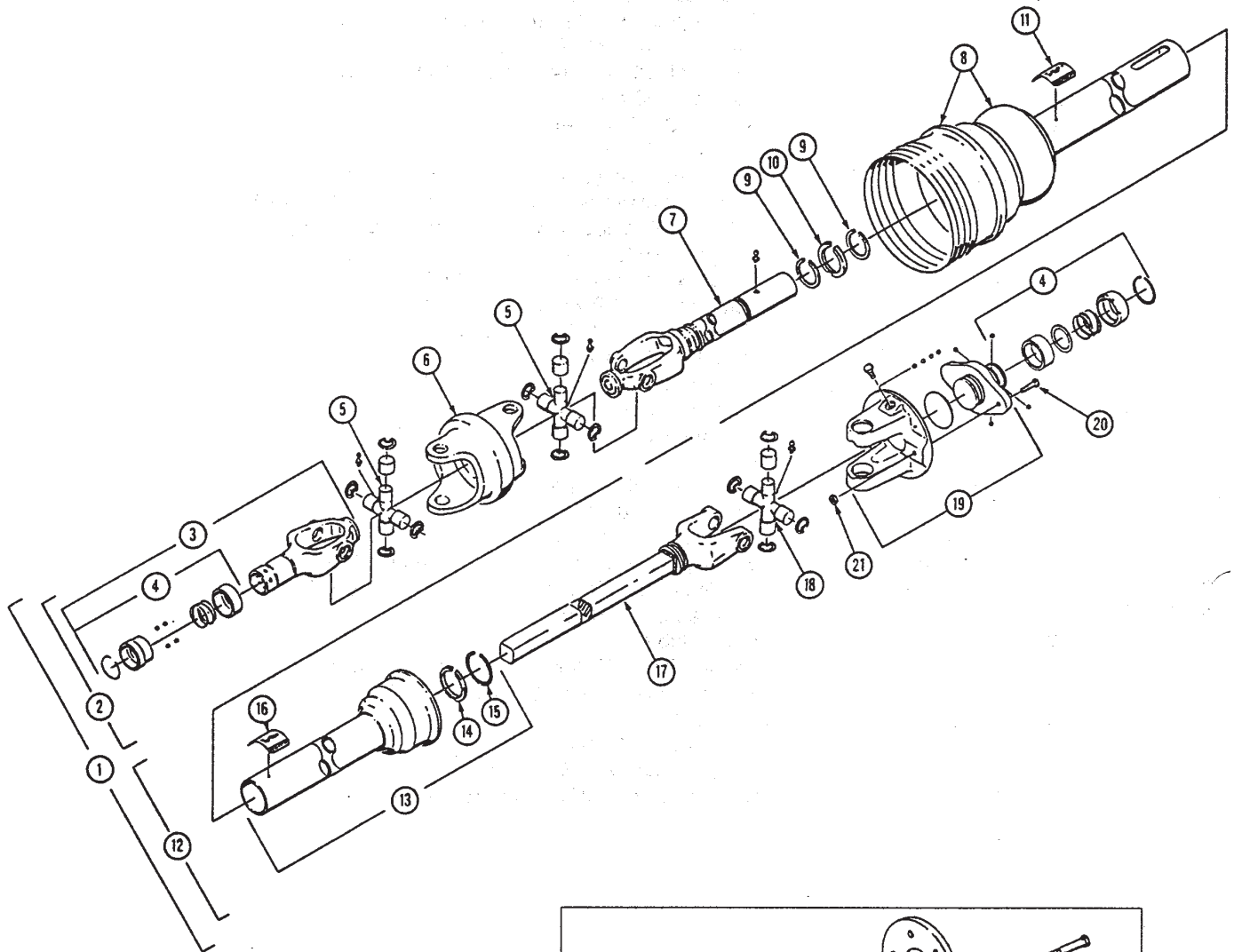
KNIGHT MANUFACTURING CORP. PO BOX 167 BRODHEAD, WI 53520  
OFFICE: (608) 897-2131 PARTS/SERVICE: (608) 897-2125 FAX: (608) 897-2561

**UNDERCARRIAGE ASSEMBLY**

3250/3300-TOW R011395

REF	PART NO	QTY	DESCRIPTION
1	101-740	1	Undercarriage Weldment For 3250
1	101-873	1	Undercarriage Weldment For 3300
2	133-973	1	Wood Bumper: 3" x 6" x 72" Mtg Hrd: 1/2" x 4" Tap Bolt, FW, LW & Nut (4 ea)
3	170-023	4	Zerk; 1/4"-28 NF
4	101-741	1	Tongue Clevis Assembly Mtg Hrd: 3/4" x 2" GRD 8 Bolt & GRD 8 LN (2 ea)
5	170-984	1	Jackstand Assy (See Separate Page For Parts)
6	133-976	4	Dummy Weigh Bar Mount (For Units Without Scales) Mtg Hrd To Spool: 3/8" x 2-1/2" Bolt & LN (1 ea) Mtg Hrd To Endstop: 3/8" x 3-1/2" Bolt & LN
7	101-742	4	Weigh Bar Mount Spool Mtg Hrd To Unit: 5/8" x 1-3/4" GRD 5 Bolt, FW & LN (2 ea)
8	170-112	2	Wheel; 20", 8-Bolt, Drop Center
8	172-284	2	Wheel; 22-1/2" x 8-1/4", 8-Hole
	171-800	2	8-Bolt Hub & Spindle Assy
	170-755	1	Complete 8-Bolt Hub Assy
9	171-827	8	Nut; 5/8" NF
10	170-550	1	Dust Cap
11	170-236	1	Cotter Pin; 5/32" x 1-1/2"
12	170-132	1	Castle Nut; 7/8" NF
13	170-131	1	Flat Washer; 7/8" Heavy
14	170-545	1	Bearing Cone: Timken 14137A Or Equiv (Outer)
15	170-554	1	Bearing Cone: Timken 3780 Or Equiv (Inner)
16	170-556	1	Grease Seal; C/R 25105 Or Equiv
17	170-705	1	8-Bolt Hub Assy
18	170-546	1	Bearing Race; Timken 14276 Or Equiv (Outer)
19	170-553	1	Bearing Race; Timken 3720 Or Equiv (Inner)
20	171-826	8	Stud; 5/8" NF
21	171-745	1	Spindle; 2-1/2" x 14-1/8" Mtg Hrd: 3/8" x 4" Bolt & LN
22	101-909	2	Riser Mtg Hrd: 5/8" x 1-3/4" Bolt, & LN (8 ea)

An asterisk (\*) at the end of a part number (XXX-XXX\*) indicates that the part is no longer used in production for this application. Superscript letters (XXX-XXX<sup>A</sup>) refer to footnotes and/or illustration boxes.



(Illustration box A) Slip clutch parts used on units before S/N (3250-527); (3300-1474).

KNIGHT MANUFACTURING CORP. PO BOX 167 BRODHEAD, WI 53520  
OFFICE: (608) 897-2131 PARTS/SERVICE: (608) 897-2125 FAX: (608) 897-2561

**PTO DRIVELINE PARTS**

3250/3300-TOW R102897

## Weasler Constant Velocity PTO

REF	PART NO	QTY	DESCRIPTION
1	172-923	1	PTO Driveline Assy ( <i>ball shear style clutch</i> )
	172-295 <sup>A</sup>	1	PTO Driveline Assy; Mtg Hrd: 1/2" x 3" Bolt & LN ( <i>friction style clutch</i> )
2	172-296	1	CV Joint & Tube Half
3	172-305	1	Yoke Assy
4	172-019	1	Spring-Lok Repair Kit
5	172-302	2	Cross & Bearing Kit
6	172-303	1	CV Center
7	172-300	1	Yoke Tube & Slip Sleeve
8	172-298	1	Inner Guard
	172-304	1	Bell Extension
9	170-219	2	Bearing Retainer
10	170-220	1	Nylon Bearing
11	171-550	1	Safety Decal
12	172-988	1	Ball Shear and Shaft Half
	172-297 <sup>A</sup>	1	Friction Clutch & Shaft Half
13	172-299	1	Outer Guard
14	170-220	1	Nylon Bearing
15	170-219	1	Bearing Retainer
16	171-550	1	Safety Decal
17	172-301	1	Yoke & Shaft
18	170-720	1	Cross & Bearing Kit
19	172-926	1	Ball Shear Assembly
20	172-986	1	Shear Bolt; 1/4" x 2" ( <i>grade 5</i> )
21	170-069	1	Lock Nut; 1/4" ( <i>grade 5</i> )

A; Parts listed below are PTO and slip clutch parts used with a nonspline input shaft. Parts are used on units before serial number (3250-527); (3300-1474). (see illustration box A on opposite page for slip clutch parts breakdown).

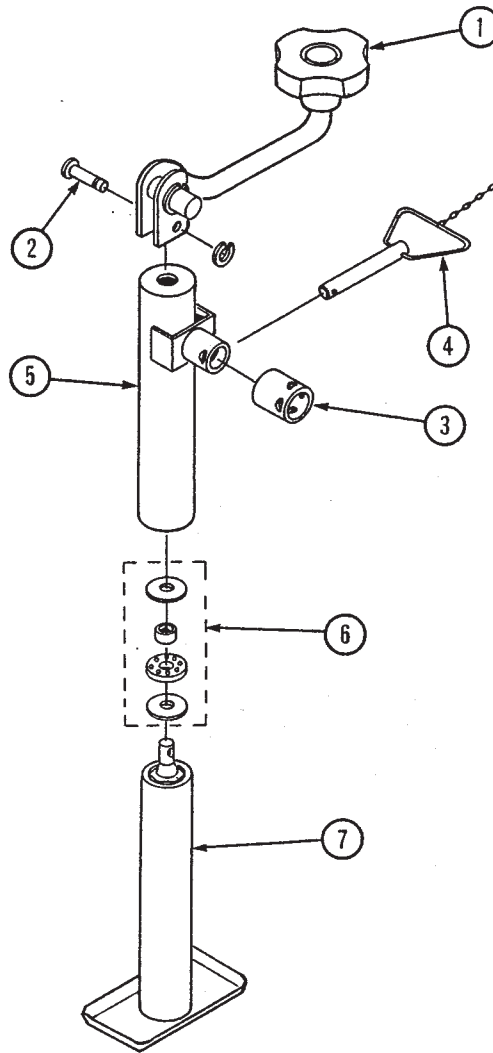
1	172-295	1	PTO Driveline Assy; Mtg Hrd: 1/2" x 3" Bolt & LN ( <i>friction style clutch</i> )
12	172-297	1	Friction Clutch & Shaft Half
19	170-047	6	Stop Nut; 3/8"
20	171-757	1	Clutch Yoke
21	171-760	2	Friction Disk
22	171-758	1	Drive Hub
	173-159	1	Replacement Bronze Bushing
23	171-759	1	Pressure Plate
24	171-761	6	Spring
25	171-762	6	Centering Washer
26	171-813	6	Bolt; 3/8" x 4-1/4"

An asterisk (\*) at the end of a part number (XXX-XXX\*) indicates that the part is no longer used in production for this application. Superscript letters (XXX-XXX<sup>A</sup>) refer to footnotes and/or illustration boxes.

**JACKSTAND**

3250/3300-TOW R011395

REF	PART NO	QTY	DESCRIPTION
	170-984	1	Jackstand Assy
1	170-386	1	Crank Assy
2	171-860	1	Crank Pin (Includes "C" Washer)
3	170-985	1	Mount Tube
4	170-987	1	Pin And Chain Assy
5	170-986	1	Outer Tube
6	170-397	1	Thrust Bearing Kit
7	171-941	1	Inner Tube Assembly (Includes Nut & Screw)

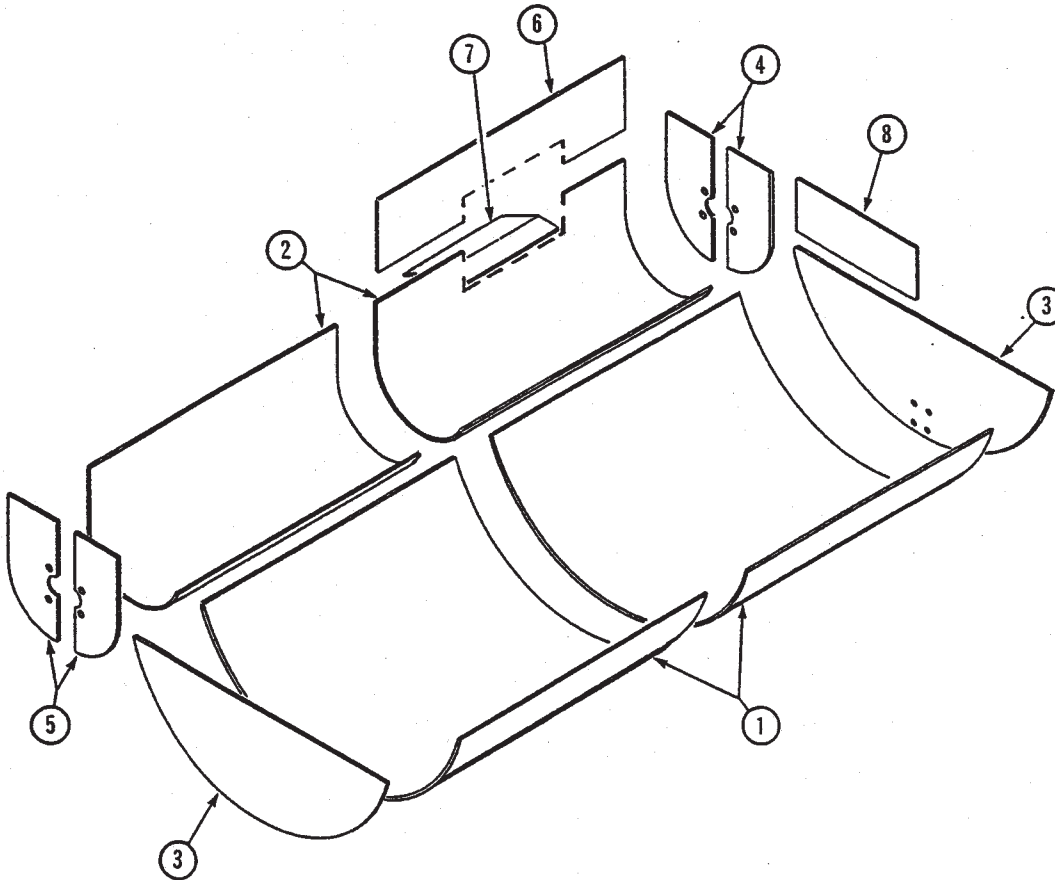


KNIGHT MANUFACTURING CORP. PO BOX 167 BROADHEAD, WI 53520  
OFFICE: (608) 897-2131 PARTS/SERVICE: (608) 897-2125 FAX: (608) 897-2561

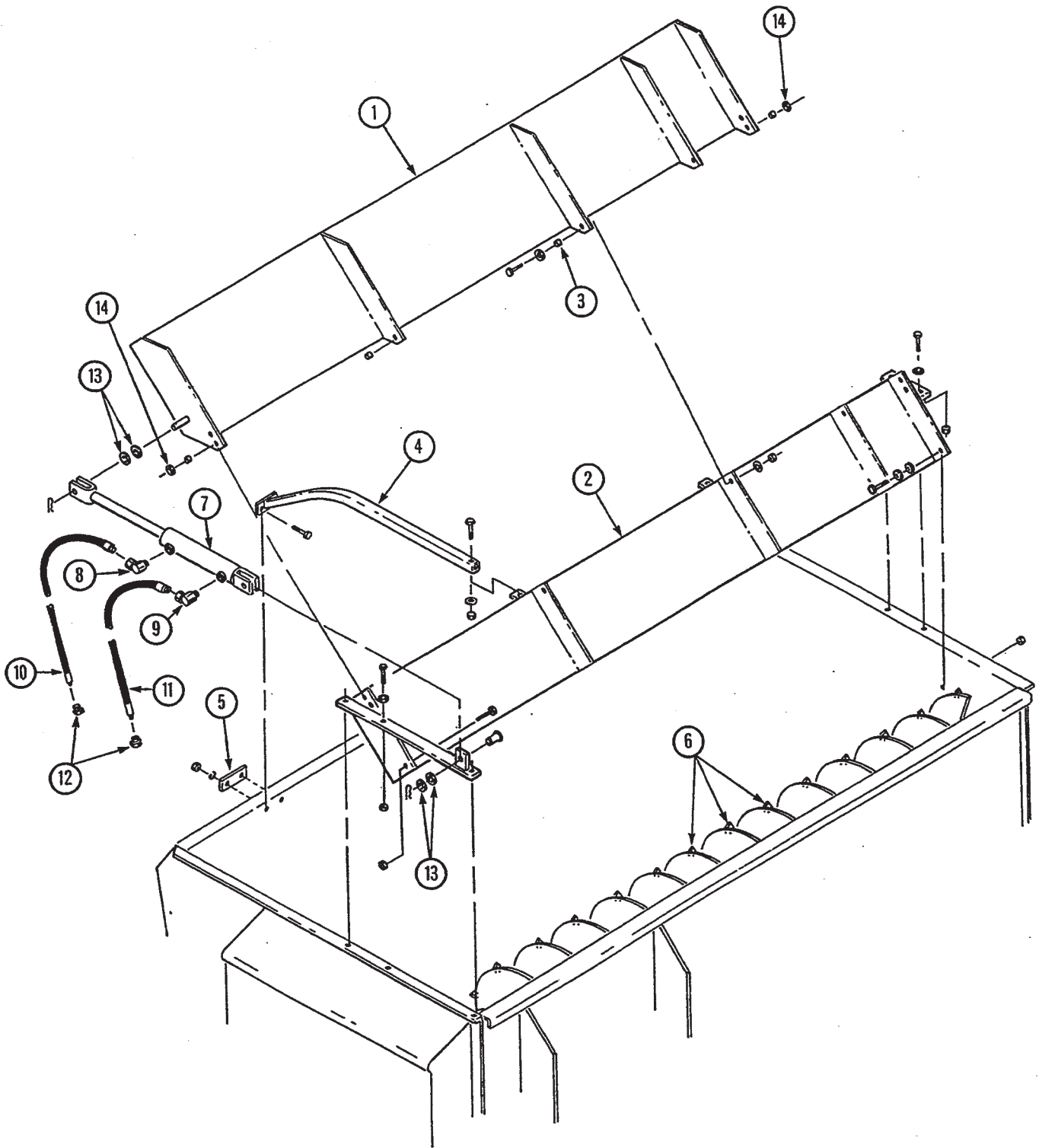
**REPAIR LINER PARTS**

3250/3300-TOW R011395

REF	PART NO	QTY	DESCRIPTION
	<i>Mild</i>	<i>Stainless (3250 only)</i>	
1	134-701	141-372	2 Reel Liner (3250 only)
	134-711	<del>141-385</del>	2 Reel Liner (3300 only)
2	134-702	141-373	2 Auger Liner (3250 only)
	134-712	<del>141-386</del>	2 Auger Liner (3300 only)
3	134-703	141-374	2 Reel End Liner
4	134-708	141-375	1 Auger End Liner (Front) Part number includes both left and right halves.
5	134-707	141-378	1 Auger End Liner (Rear) Part number includes both left and right halves.
6	134-704	141-377	1 Upper Door Liner
7	134-716	141-379	1 Door Opening Liner
8	134-705	141-376	1 Upper Reel Liner
	005518	A/R	Repair Liner Installation Instructions



An asterisk (\*) at the end of a part number (XXX-XXX\*) indicates that the part is no longer used in production for this application. Superscript letters (XXX-XXX<sup>^</sup>) refer to footnotes and/or illustration boxes.



**KNIGHT MANUFACTURING CORP. PO BOX 167 BRODHEAD, WI 53520  
OFFICE: (608) 897-2131 PARTS/SERVICE: (608) 897-2125 FAX: (608) 897-2561**

**HAY-MAX KIT PARTS**

3250/3300 TOW R011395

REF	PART NO	QTY	DESCRIPTION
1	102-016	1	Upper Hay-Max Attachment (3250)
	102-018	1	Upper Hay-Max Attachment (3300) Mtg Hrd: 1/2" x 1-1/2" Bolt, LN (4), 1/2" FW (6)
2	102-017	1	Lower Hay-Max Attachment (3250)
	102-019	1	Lower Hay-Max Attachment (3300) Mtg Hrd: 1/2" x 1-1/4" Bolt,FW, LN (6 ea.)
3	134-771	4	Pivot Bushing
4	102-020	2	Bucket Guard Mtg Hrd: 1/2" x 3" Bolt, FW, LN (1ea.), 3/8" x 1-1/4" Bolt, LW, Nut (2)
5	134-012	2	Bucket Guard Mount
6	133-835	73 <sup>A</sup>	Auger Knife (3250) (Quantity listed is total for Hay- Max option) Mtg Hrd: 1/4" x 3/4" Bolt, LW & Nut (2 ea. Knife)
		91 <sup>A</sup>	Auger Knife (3300) (Quantity listed is total for Hay-Max option) Mtg Hrd: 1/4" x 3/4" Bolt, LW & Nut (2 ea. Knife)
7	172-441	1	Hydraulic Cylinder; 2" Dia. x 10" Stroke, Seal Kit Order 172-446
8	171-030	1	90 Deg. Swivel Adapter; 3/8"
9	171-723	1	90 Deg. Swivel Restrictor; 3/8"
10	170-468	1	Hydraulic Hose; 1/4" x 162"
11	170-471	1	Hydraulic Hose; 1/4" x 170"
12	170-235	2	Reducer Fitting; 1/2" To 3/8"
13	170-122	A/R	Spacer Washer; 1" SAE Flat
14	172-445	2	1/2" Flat Washer
	172-442	1	Electrical Switching Valve (Optional) Mounted On Tractor

A: Auger knife quantities listed are the total number of knives needed for the Hay-Max option. Knife quantity includes standard factory installed knives on upper auger. Only order quantity needed to total amount of knives listed for field installation.

**DECAL AND PAINT LIST**

3250/3300-TOW R011395

The following decals are listed below for your convenience.  
Use the operator's manual for decal location, part number and ordering.

**Unit Decals:**

PART NO	QTY	DESCRIPTION
172-463	1	Complete Set Of Decals For 3250
172-464	1	Complete Set Of Decals For 3300
170-154	2	"KNIGHT"
170-155	2	Knight Head
170-849	2	WARNING - Beware Of Power Driven . . .
171-712	1	NOTICE - Retighten Set Screws . . .
171-820	4	DANGER - Rotating Auger Inside . . .
171-905	2	"REEL AUGGIE"
172-451	2	"3250" For 3250 Only
172-452	2	"3300" For 3300 Only
171-911	1	NOTICE - Operating Precautions
172-308	1	CAUTION - CV-PTO Operating Length. . .
171-913	1	WARNING - Do Not Operate . . .
171-915	1	DANGER - Shield Missing . . .
171-916	2	DANGER - Beware Of Rotating Driveshaft . . .
171-947	4	DANGER - Do Not Hand Load . . .
171-948	1	BEWARE - If Mixer . . .
170-490	1	IMPORTANT - Reduce Engine Speed . . .
171-949	1	"U.S. Patent No. . . ."
172-370	1	Friction Clutch Adjustment
171-748	1	Door Gauge
170-893	1	SMV Symbol
171-992	2	Decal; Red Reflector
172-292	1	Full Line

**Power Chute And Slide Tray Decals:**

171-914	2	WARNING - Stay Clear Of Chute . . .
171-991	1	Decal; Amber Reflector
171-992	1	Decal; Red Reflector

**PTO Driveline Decals:**

171-550	1	DANGER, PTO . . .
171-599	1	Do Not Exceed . . .
171-799	1	DANGER - Shield Missing

**Paint:**

170-366	Knight Yellow Aerosol Can
170-812	Knight Yellow Quart Can
170-813	Knight Yellow Gallon Can
170-367	Knight Red Aerosol Can
170-814	Knight Red Quart Can
170-815	Knight Red Gallon Can

KNIGHT MANUFACTURING CORP. PO BOX 167 BRODHEAD, WI 53520  
OFFICE: (608) 897-2131 PARTS/SERVICE: (608) 897-2125 FAX: (608) 897-2561

**OPTIONAL KITS**

3250/3300-TOW R011395

**Safety Chain For Towed Equipment P/N 172-195**

This chain is designed to retain the connection between the towing and towed machines in the event of separation of the primary attaching system. It should be used whenever the unit is transported on the highway.

**Light Kit For Towed Equipment**

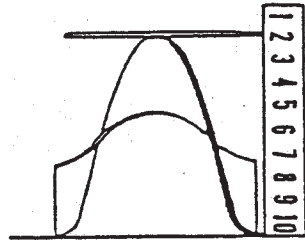
This light kit is designed for lighting and marking of agricultural field equipment whenever the equipment is on a highway. This kit is pre-assembled, and it includes mounting hardware.

<b>PART NO</b>	<b>QTY</b>	<b>DESCRIPTION</b>
300-007	1	Complete Light Kit - Assembled
172-173	2	Red And Amber Light Assembly
172-174	25'	4 Conductor Wire
172-175	1	4 Pin In-Line Connector (Male & Female)

**Options:**

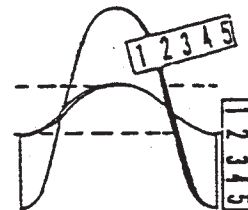
172-110	1	7 Pin Female Connector
---------	---	------------------------

**OUTSIDE DIAMETER:** Outside diameter can be determined by laying the flight on a flat surface and measuring from the top to the base. **NOTE:** Dimensions may vary slightly.

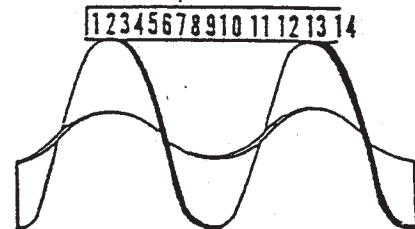


**THICKNESS:** Thickness of flighting can be determined with any linear measuring instrument.

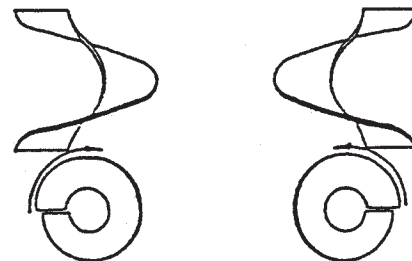
**INSIDE DIAMETER:** To find the inside diameter of flight, measure the distance from the inside of the flight to the peak. Then multiply the dimension by two and subtract the answer from the outside diameter dimension.



**PITCH:** Pitch is the dimension from one peak to the next, measured along the axis of the shaft. The term full pitch means that the outside diameter and the pitch are the same.



**RIGHT HAND AND LEFT HAND FLIGHTING:** As you look at the face of flighting and it is slanting downward to the right; it is right hand and if it is slanting downward to the left; it is left hand.



Flighting dimensions are written in a series similar to the following:

1/4" - 4" - 14" - 14"  
Thick - I.D. - O.D. - Pitch

## UNIVERSAL JOINT REPAIR PROCEDURE

3250/3300-TOW R011395

### DISASSEMBLY PROCEDURE:

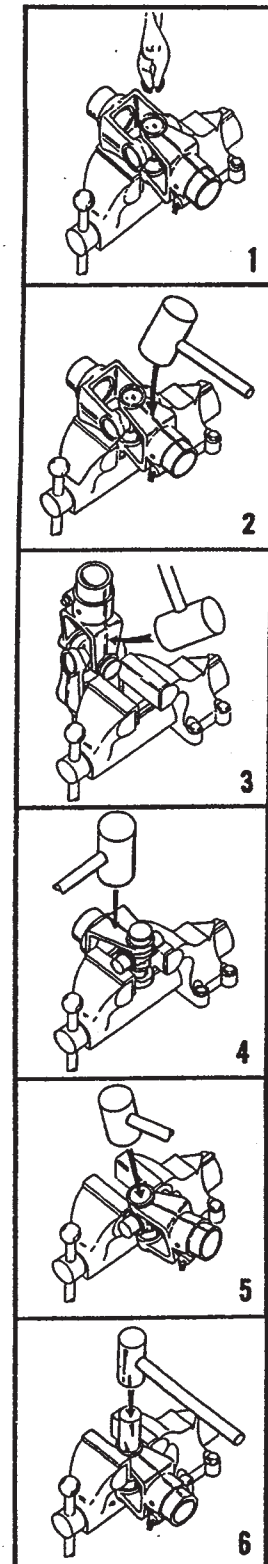
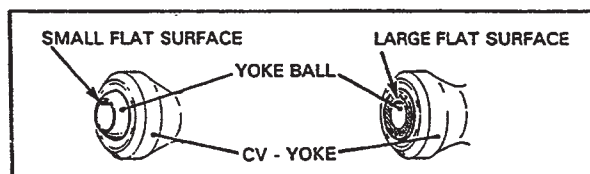
1. Remove the four snap rings as shown in Figure #1.
2. Position the joint in an open vise, with each ear of one yoke supported by a vise jaw. Figure #2
3. With a soft hammer or mallet, strike the top ear of the unsupported yoke as indicated by the arrow in Figure #2. This will drive the top bushing outward approximately 3/8 of an inch.
4. Grip the loosened bushing in the vise as shown in Fig. #3. Drive the yoke off the bushing by striking the yoke ear with a mallet in the direction of the arrow. (Fig. #3)
5. This same procedure should be followed to remove the bushing that is directly opposite the one in Step 4. After this, the yoke itself may be removed.
6. To remove the remaining two bushings, support the cross as shown in Figure #4. Make certain that the vise jaws are covered with brass protectors. By striking the yoke ear as indicated by the arrow in Figure #4, the remaining bushings can be removed by repeating the procedure called for in Step 4 & Figure #3.

### ASSEMBLY PROCEDURE:

**DURING REASSEMBLY, BE SURE THAT THERE IS NO DIRT ON THE TRUNNIONS OF THE CROSS OR IN THE BUSHINGS!**

1. Start one bushing in the yoke ear and position the center cross through the yoke. Drive the first bushing down flush with the outside surface of the ear as shown in Fig. #5. Support the underside of the ear so as not to spring the yoke.
2. Clamp the ear in the vise as shown in Figure #6. Use a punch of the same diameter as the bushing, drive the bushing past the snap ring groove, and insert a snap ring.
3. Position the cross and drive in the opposite bushing as described in Steps 1 & 2, and Insert a snap ring.
4. Assemble the second yoke in the same manner.
5. To insure proper seating, and to eliminate any possible tightness, strike the forged surfaces of the yoke ears with a mallet. This will insure a free flexing joint.
6. Lubricate CV-cavity with 20 to 30 pumps of grease. For proper distribution of grease, rotate CV-yokes in a circular motion.

\* When assembling CV-joint, rotate CV-ball so that larger flat surface of ball is toward CV-disk.



**HARDWARE PART NUMBER LISTING**

3250/3300-TOW R011395

All hex head bolts up to and including 7/16" dia are grade 5 unless otherwise specified. All fasteners are NC thread unless otherwise specified.

**HEX NUTS AND WASHERS**

SIZE	Hex Nuts	Lock Nuts	Jam Nuts	Flat Washer	Lock Washer
#10-32	171-606			171-525	171-605
1/4"	170-125	170-069	171-386	170-301	170-124
5/16"	170-119	170-028		170-127	170-118
3/8"	170-007	170-047	170-022	170-244	170-006
7/16"	170-062	170-239	170-046	170-138	170-061
1/2"	170-004	170-042	170-036	170-040	170-003
5/8"	170-011	170-031	170-037	170-066	170-010
3/4"	170-017	170-185	170-035	170-015	170-016
7/8"	171-776			170-131	172-003
1"				170-122	171-021

**HEX HEAD BOLTS**

Bolt Size	Part No
1/4 x 3/4	170-803
1/4 x 7/8	171-094
1/4 x 1	170-310
1/4 x 1-1/2	170-068
1/4 x 2-3/4	171-203
1/4 x 3	171-403
5/16 x 5/8	170-532
5/16 x 3/4	170-262
5/16 x 7/8	170-256
5/16 x 1	170-027
5/16 x 1-1/4	170-188
5/16 x 1-1/2	170-372
5/16 x 1-3/4	170-263
5/16 x 2	170-376
5/16 x 2-1/2	170-369
5/16 x 3	170-295
5/16 x 3-1/4	171-639
5/16 x 4 (Tap Bolt)	170-293
5/16 x 4-1/2	170-294
3/8 x 3/4	170-439
3/8 x 7/8	170-268
3/8 x 7/8 (soc. hd. capscrew)	172-044
3/8 x 1	170-054
3/8 x 1 (RH. Machine screw)	170-347
3/8 x 1-1/4	170-005
3/8 x 1-1/2	170-368
3/8 x 1-3/4	172-383
3/8 x 2	170-245
3/8 x 2-1/4	170-320

3/8 x 2-1/4 (Round Head)	170-375
3/8 x 2-1/2	170-257
3/8 x 2-1/2 (Full thread)	170-128
3/8 x 3	170-380
3/8 x 3-1/2	170-292
3/8 x 4	170-877
3/8 x 4-1/2	170-519
3/8 x 4-1/2 (Gr 5-Black ox.)	171-318
3/8 x 5	170-493
3/8 x 5-1/2	170-593
3/8 x 6-1/2	171-291
7/16 x 3/4	170-265
7/16 x 1	170-032
7/16 x 1-1/4	170-354
7/16 x 1-1/2	170-059
7/16 x 2	170-356
7/16 x 2-1/2	170-379
7/16 x 3	170-270
7/16 x 5-1/2	170-377
7/16 x 6	170-378
1/2 x 3/4	171-252
1/2 x 1	170-149
1/2 x 1-1/4	170-373
1/2 x 1-1/2	170-002
1/2 x 1-3/4	171-774
1/2 x 2	170-050
1/2 x 2 (cap screw GR 5)	171-802
1/2 x 2-1/4	172-387
1/2 x 2-1/2	170-319
1/2 x 2-1/2 (tap bolt)	171-099
1/2 x 2-1/2 (Grade 5)	170-885

1/2 x 2-3/4	172-007
1/2 x 3	170-168
1/2 x 3 (Grade 5)	172-490
1/2 x 3-1/2	170-167
1/2 x 4	171-509
1/2 x 4-1/2	171-573
1/2 x 5	171-412
1/2 x 8-1/2	170-504
1/2 x 11	170-506
5/8 x 1 (G.5)	171-087
5/8 x 1-1/4	171-366
5/8 x 1-1/2	170-153
5/8 x 1-3/4 (Tap Bolt- Gr 5)	170-030
5/8 x 2 (Grade 5)	170-009
5/8 x 2 (Tap Bolt)	171-772
5/8 x 2-1/2 (Tap Bolt)	170-129
5/8 x 2-1/2	172-381
5/8 x 3	170-258
5/8 x 3-1/2	170-038
5/8 x 2-3/4	172-356
5/8 x 4	170-371
5/8 x 4-1/2	170-067
5/8 x 5	170-065
5/8 x 5-1/2 (Grade 5)	172-421
5/8 x 6	170-381
5/8 x 9-1/2	171-039
3/4 x 2	170-058
3/4 x 2 (Grade 5)	171-768

KNIGHT MANUFACTURING CORP. PO BOX 167 BROADHEAD, WI 53520  
 OFFICE: (608) 897-2131 PARTS/SERVICE: (608) 897-2125 FAX: (608) 897-2561

**HARDWARE PART NUMBER LISTING**

3250/3300-TOW R011395

**HEX HEAD BOLTS CONT....**

3/4 x 2 (Grade 8) .....	171-877
3/4 x 2-1/4 .....	171-275
3/4 x 2-1/2 .....	170-374
3/4 x 3 .....	170-014
3/4 x 3-1/2 .....	170-195
3/4 x 3-1/2 (Grade 8) .....	171-899
3/4 x 4 .....	170-419
3/4 x 4-1/2 (Grade 5) .....	170-846
3/4 x 6 (Grade 5) .....	171-116

**TRUSS HEAD BOLTS**

#6-32 x 3/4 .....	172-416
#8-32 x 1-1/2 .....	171-210
#10-32 x 3/4 .....	171-604
#10-32 x 1 .....	172-882

1/4 x 1/2 .....	170-123
1/4 x 3/4 .....	170-193
1/4 x 1 .....	170-194
5/16 x 1 (Grade 5) .....	170-117

**CARRIAGE BOLTS**

1/4 x 1-1/4 .....	170-311
1/4 x 1-1/2 .....	170-355
1/4 x 2 .....	170-299
1/4 x 2-1/2 .....	171-394
1/4 x 2-3/4 .....	170-508
1/4 x 3 .....	170-509

5/16 x 1 .....	170-370
5/16 x 1-1/2 .....	170-296
5/16 x 2-1/2 .....	171-395
5/16 x 5-1/2 .....	170-494

3/8 x 3-1/2 .....	171-283
3/8 x 4-1/2 .....	170-191
3/8 x 5 .....	170-495
3/8 x 6-1/2 .....	171-174
3/8 x 8 .....	170-297
3/8 x 13-1/2 .....	170-300

1/2 x 6-1/2 .....	171-098
1/2 x 9 .....	171-255

**ZERKS**

1/4-28 .....	170-023
1/4-28 - 45 .....	170-148
1/4-28 - 90 .....	170-049
1/4 NPT .....	170-277

1/8 NPT .....	170-865
1/8 NPT-45 .....	170-864
1/8 NPT-65 .....	170-215
1/8 NPT-90 .....	170-866

**COTTER PINS**

1/16 x 1/2 .....	170-992
3/32 x 3/4 .....	170-364

1/8 x 3/4 .....	170-177
1/8 x 1 .....	170-045
1/8 x 1-1/4 .....	170-033
1/8 x 1-1/2 .....	170-382

5/32 x 1 .....	170-421
5/32 x 1-1/2 .....	170-236
5/32 x 3 .....	170-135

3/16 x 1-1/4 .....	170-991
3/16 x 1-1/2 (linch pin) .....	170-800
3/16 x 2 .....	170-115

7/32 x 1-3/4 .....	171-834
--------------------	---------

1/4 x 1-1/2 .....	170-521
1/4 x 2 .....	170-056

**SET SCREWS**

1/4 x 1/4 .....	170-247
-----------------	---------

5/16 x 5/16 .....	170-248
5/16 x 1/2 .....	170-254
5/16 x 1/4 NF .....	170-993
5/16 x 5/16 NF .....	170-825
5/16 x 5/8 NF .....	170-456

3/8 x 1/4 .....	170-856
3/8 x 3/8 .....	170-151
3/8 x 1/2 (nylock) .....	170-857
3/8 x 3/4 (sq head) .....	170-289
3/8 x 3/4 (sq hd drilled) ..	170-290
3/8 x 1 .....	170-021
3/8 x 1/2 NF .....	171-469

7/16 x 7/16 .....	170-288
7/16 x 1 (sq head) .....	170-147

1/2 x 5/8 .....	170-249
1/2 x 1 .....	170-438
1/2 x 1-1/4 (half dog point) ..	171-085

5/8 x 5/8 .....	170-250
-----------------	---------

3/4 X 3/4 (knurled) .....	170-251
---------------------------	---------

**OFFSET LINKS**

#50 .....	170-096
#50-Double roller .....	170-102
#60-Double roller .....	170-103
#60 .....	170-097
#80 .....	170-098
#80H .....	170-820
#100 .....	170-099
#120 .....	170-100
#140 .....	170-101
#160 .....	170-887

**ROLLER LINKS**

#50 .....	171-415
#60 .....	171-416
#80 .....	171-417
#80H .....	170-795
#100 .....	171-418
#100H .....	172-146
#120 .....	171-419
#140 .....	171-420
#160 .....	172-421

**ROLLER CHAIN****CONNECTOR LINKS**

<u>Size</u> .....	<u>Part No</u>
#50-2R .....	170-094
#50 .....	170-088
#60-2R .....	170-095
#60 .....	170-089
#60H .....	171-102
#80 .....	170-090
#80H .....	170-821
#100 .....	170-091
#100H .....	171-969
#120 .....	170-092
#140 .....	170-093
#160 .....	170-888

**PART NUMBER INDEX**

3250/3300-TOW R011395

005518	27	133-852	3	170-014	35	170-135	15,35
101-227	14	133-899	3	170-015	34	170-138	34
101-231	14	133-903	3	170-016	34	170-142	9
101-708	7,9	133-913	3	170-017	34	170-142	3,7,11
101-720	11	133-914	3	170-021	35	170-147	35
101-722	12	133-915	3	170-022	34	170-148	35
101-723	11	133-916	3	170-023	23,35	170-149	34
101-724	11	133-917	3	170-027	34	170-151	35
101-728	7	133-918	5	170-028	34	170-152	3
101-731	7,9	133-920	5	170-030	34	170-153	34
101-733	3	133-924	12	170-031	34	170-154	15,30
101-736	15	133-942	15	170-032	34	170-155	30
101-737	15	133-943	15	170-033	35	170-161	15
101-738	15	133-951	13,15	170-035	34	170-167	34
101-739	15	133-952	15	170-036	34	170-168	34
101-740	23	133-973	23	170-037	34	170-170	5
101-741	23	133-976	23	170-038	34	170-177	35
101-742	19,23	133-977	12	170-040	34	170-185	34
101-747	13	133-978	12	170-042	34	170-188	34
101-761	3	134-012	7,9,29	170-045	35	170-191	35
101-763	11	134-086	3	170-046	34	170-193	35
101-784	11	134-112	11	170-047	25,34	170-194	35
101-791	16,17	134-123	11	170-049	35	170-195	35
101-802	7,11	134-124	11	170-050	34	170-215	35
101-803	11	134-136	16,17	170-053	3	170-219	25
101-804	11	134-155	3	170-054	5,7,9,34	170-220	25
101-809	11	134-351	7,9	170-056	35	170-235	12,15,16,17,19,29
101-815	11	134-366	5	170-058	34	170-236	12,23,35
101-818	3	134-372	5	170-059	34	170-238	19,21
101-819	3	134-389	15	170-061	34	170-239	34
101-835	21	134-390	15	170-062	34	170-244	5,34
101-868	11	134-394	15	170-065	34	170-245	34
101-869	7,9	134-395	14	170-066	34	170-247	35
101-871	9	134-409	21	170-067	34	170-248	35
101-873	23	134-499	9	170-068	34	170-249	35
101-891	16	134-499	7	170-069	34	170-250	35
101-896	14	134-701	27	170-073	12	170-251	35
101-897	15	134-702	27	170-074	12,15	170-254	35
101-909	23	134-703	27	170-075	12,13,15	170-256	34
101-916	19	134-704	27	170-088	35	170-257	34
101-917	21	134-705	27	170-089	35	170-258	34
102-009	7,9	134-707	27	170-090	35	170-262	15,34
102-010	9	134-708	27	170-091	35	170-263	34
102-015	7	134-711	27	170-092	35	170-265	34
102-016	29	134-712	27	170-093	35	170-268	34
102-017	29	134-716	27	170-094	35	170-270	34
102-018	29	134-741	7	170-095	35	170-277	35
102-019	29	134-742	9	170-096	35	170-288	35
102-020	29	134-756	5	170-097	35	170-289	35
102-243	7	134-758	7,9	170-098	35	170-290	35
102-244	9	134-771	29	170-099	35	170-292	34
102-245	7	135-598	3	170-100	35	170-293	34
102-247	7,9	135-654	3	170-101	35	170-294	34
102-249	3	135-662	3	170-102	35	170-295	34
102-251	7,9	135-675	7,9	170-103	35	170-296	35
102-252	9	135-676	7	170-108	3	170-297	35
102-253	9	135-677	9	170-110	15	170-299	35
102-258	7,9	135-698	7,9	170-112	23	170-300	35
102-260	7,9	135-699	7,9	170-115	35	170-301	34
131-011	7,9	135-701	7,9	170-115	15,35	170-302	15
132-701	15	170-000	7,9	170-118	15,34	170-310	34
133-277	3	170-002	34	170-119	34	170-311	35
133-376	3	170-003	34	170-122	15,29,34	170-319	34
133-378	19	170-004	34	170-123	35	170-320	34
133-445	12	170-005	34	170-124	34	170-347	34
133-546	5	170-006	34	170-125	34	170-354	34
133-831	7,9	170-007	34	170-127	34	170-355	35
133-832	7,9	170-008	3,11	170-128	34	170-356	34
133-833	7,9	170-009	34	170-129	34	170-364	35
133-835	7,9,29	170-010	34	170-131	23,34	170-366	30
133-849	5	170-011	34	170-132	23	170-367	30

**PART NUMBER INDEX**

3250/3300-TOW R011395

170-368	34	170-888	35	171-573	34	172-007	34
170-369	34	170-893	30	171-576	15	172-019	25
170-370	35	170-898	3	171-585	5	172-024	5
170-371	34	170-941	12,13	171-599	30	172-027	5
170-372	34	170-947	13	171-604	35	172-044	34
170-373	34	170-984	23,26	171-605	34	172-046	5
170-374	35	170-985	26	171-606	34	172-110	31
170-375	34	170-986	26	171-607	3	172-128	21
170-376	34	170-987	26	171-639	34	172-130	21
170-377	34	170-991	35	171-666	15	172-134	21
170-378	34	170-992	35	171-668	15	172-138	21
170-379	34	170-993	35	171-696	12	172-140	21
170-380	34	171-021	34	171-712	30	172-141	21
170-381	34	171-030	12,13,15,17	171-723	29	172-142	21
170-382	35	171-032	3,13	171-745	23	172-143	21
170-386	26	171-039	34	171-748	30	172-146	35
170-397	26	171-048	7,9,11	171-757	25	172-165	21
170-415	19,21	171-049	7,9,11	171-758	25	172-166	21
170-419	35	171-083	7,9	171-759	25	172-173	31
170-421	35	171-085	35	171-760	25	172-174	31
170-438	35	171-087	34	171-761	25	172-175	31
170-439	34	171-094	34	171-762	25	172-193	5
170-456	35	171-098	35	171-768	34	172-195	31
170-465	16,17	171-099	34	171-772	34	172-284	23
170-465	17	171-102	35	171-774	34	172-292	30
170-468	12,13,29	171-116	35	171-776	34	172-295	25
170-471	12,13,29	171-136	15,16,17	171-782	15	172-296	25
170-478	3	171-151	15	171-799	30	172-297	25
170-490	30	171-158	19,21	171-800	23	172-298	25
170-493	34	171-174	35	171-802	34	172-299	25
170-494	35	171-178	15	171-813	25	172-300	25
170-495	35	171-186	15	171-820	30	172-301	25
170-504	34	171-189	17	171-826	23	172-302	25
170-506	34	171-203	34	171-827	23	172-303	25
170-508	35	171-210	35	171-834	35	172-304	25
170-509	35	171-252	34	171-847	17	172-305	25
170-513	17	171-255	35	171-860	26	172-308	30
170-519	34	171-257	15	171-877	35	172-329	19
170-521	35	171-259	15	171-883	15	172-331	19
170-532	34	171-260	15	171-899	35	172-333	19
170-545	23	171-265	14	171-905	30	172-335	19
170-546	23	171-266	14	171-911	30	172-336	19
170-550	23	171-275	35	171-913	30	172-337	19
170-553	23	171-283	35	171-914	30	172-338	19
170-554	23	171-291	34	171-915	30	172-339	19
170-556	23	171-297	15	171-916	30	172-340	19
170-593	34	171-318	34	171-919	5,7,9	172-354	21
170-705	23	171-330	15	171-920	7,9,11	172-356	34
170-720	25	171-366	34	171-930	3	172-370	30
170-755	23	171-380	19,21	171-931	3	172-381	34
170-795	35	171-386	34	171-932	15	172-383	34
170-800	3,35	171-394	35	171-934	3	172-386	19
170-803	34	171-395	35	171-935	5	172-386	21
170-812	30	171-403	34	171-936	3,19,21	172-387	34
170-813	30	171-412	34	171-937	13,15	172-416	35
170-814	30	171-415	35	171-938	15	172-421	34,35
170-815	30	171-416	35	171-940	15	172-441	29
170-820	35	171-417	35	171-941	26	172-442	29
170-821	35	171-418	35	171-947	30	172-445	29
170-825	35	171-419	35	171-948	30	172-446	29
170-846	35	171-420	35	171-949	30	172-451	30
170-849	30	171-424	17	171-951	5	172-452	30
170-856	35	171-426	17	171-960	19,21	172-463	30
170-857	35	171-427	15	171-968	5	172-464	30
170-859	15	171-430	16,17	171-969	35	172-490	34
170-864	35	171-469	35	171-991	30	172-498	19
170-865	5,14	171-509	34	171-992	30	172-499	19
170-866	35	171-525	34	171-998	16,17	172-500	21
170-877	34	171-550	25,30	172-003	34	172-784	16
170-885	34	171-557	19	172-005	13	172-800	21
170-887	35	171-558	19	172-006	3	172-801	21

**PART NUMBER INDEX**

3250/3300-TOW R011395

172-802 .....	21
172-803 .....	21
172-804 .....	21
172-822 .....	5
172-823 .....	5
172-874 .....	3
172-882 .....	35
300-006 .....	17
300-007 .....	31
300-010 .....	16
300-022 .....	12

KNIGHT MANUFACTURING CORP. PO BOX 167 BRODHEAD, WI 53520  
OFFICE: (608) 897-2131 PARTS/SERVICE: (608) 897-2125 FAX: (608) 897-2561