

REEL AUGGIE 3575/3700

Tow Type

SERVICE PARTS LISTING

TABLE OF CONTENTS

Using This Listing	1
Front End and Driveshaft Parts	2-3
Rear Drive Parts	4-7
Drive Shield and Bucket Guard Parts	8-9
Grease Line Parts and Routing	10-11
Reel Parts	12-13
Auger Parts (3575)	14-15
Auger Parts (3700)	16-17
Door Parts	18-19
Slide Tray	20-21
Power Chute	22-23
Undercarriage	24-25
Eaton Scale Parts	26-27
<i>DIGI</i> -Star Scale Parts	28-29
PTO Driveline Parts (540 and 1000 RPM)	30-35
Hay-Max Kit Parts	36-37
Jackstand	38
Liner Parts	39
Decal & Paint List	40
Optional Kits	41
Flighting Terms & Dimensions	42
Universal Joint Repair	43
Hardware Listing	44-45
Part Number Index	46-48

Catalog P/N 005697

R010396

ABBREVIATIONS

3575/3700-TOW

Assy	Assembly
A/R	As Required
B	Bolt
Brg	Bearing
BSN	Before Serial Number
BTM	Bottom
C Bolt	Carriage Bolt
Cttr	Cotter
CV	Constant Velocity (Joint)
Dia	Diameter
ea	Each
Eq or Equiv	Equivalent
FLN	Flanged Lock Nut
FW	Flat Washer
Ga	Gauge
Gr or Grd	Grade
Hd	Head
Hyd	Hydraulic
ID	Inside Diameter
Ill or Illus	Illustration
Ind	Indicator
KW	Keyway
LH	Left Hand
LW	Lock Washer
Mtg Hrd	Mounting Hardware
NC	National Coarse
NF	National Fine
OD	Outside Diameter
Pc(s)	Piece(s)
PD	Pitch Diameter
PTO	Power Takeoff (Shaft)
Q or Qty	Quantity
Reg Mach	Regular Machine
RH	Right hand
SN	Serial Number
Sprkt	Sprocket
Sq	Square
Std	Standard
UASN	Used After Serial Number
UBSN	Used Before Serial Number

USING THIS SERVICE PARTS LISTING

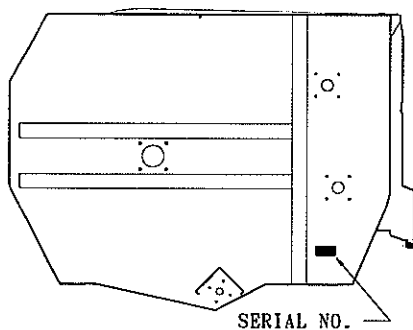
3575/3700-TOW

This listing uses a number indentation system to specify the parts of an assembly. Any number which is indented to the right, indicates that it is a component of the item to the upper left. Example:

<u>Part no</u>	<u>Description</u>	<u>Qty</u>
uuu-uuu	Assembly A	2
vvv-vvv	Sub-Assembly B (Component of A)	3
www-www	Component of B	5
xxx-xxx	Another Component of B	1
yyy-yyy	Sub-Assembly C (Component of A) etc.	1

Using this system, the sub-assemblies and their components are included if an **Assembly** is ordered. Similarly, the components of a sub-assembly are included if a sub-assembly is ordered.

The quantity (qty) associated with an assembly, represents the number of times an assembly could be shown in the drawing. The sub-assembly quantity however, is the number of times a sub-assembly is used to build one assembly. Similarly, the component quantity refers to the number of times a given component is found in one sub-assembly.



Serial Number Location
3575 and 3700

MODEL AND SERIAL NUMBER INFORMATION is located below the drive shielding (Fig. A). The model number, serial number and part number should be known when asking service personnel for parts.

If you cannot find the part you need, be as descriptive as possible when placing an order:

Sprockets: give the bore size, number of teeth, and number and size of keyways.

Roller chain: give the size of chain (stamped on the side of each link) and number of links.

Shafting: give the diameter, length, and number and size of keyways.

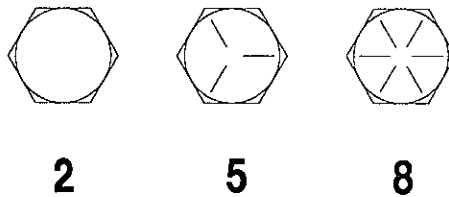
Hardware is generally not included with parts. If you need any hardware, check the size, the length, and the grade (Fig. B), then check the hardware list in this manual for the part numbers.

All hex head bolts up to and including 7/16" diameter are grade 5, and nuts are grade B unless otherwise stated.

The hardware listing also includes listings for zerks, cotter pins, set screws, and roller chain links.

The illustrations in this manual are meant to be used only as a guide for identifying parts and locating their relative positions.

BOLT GRADES

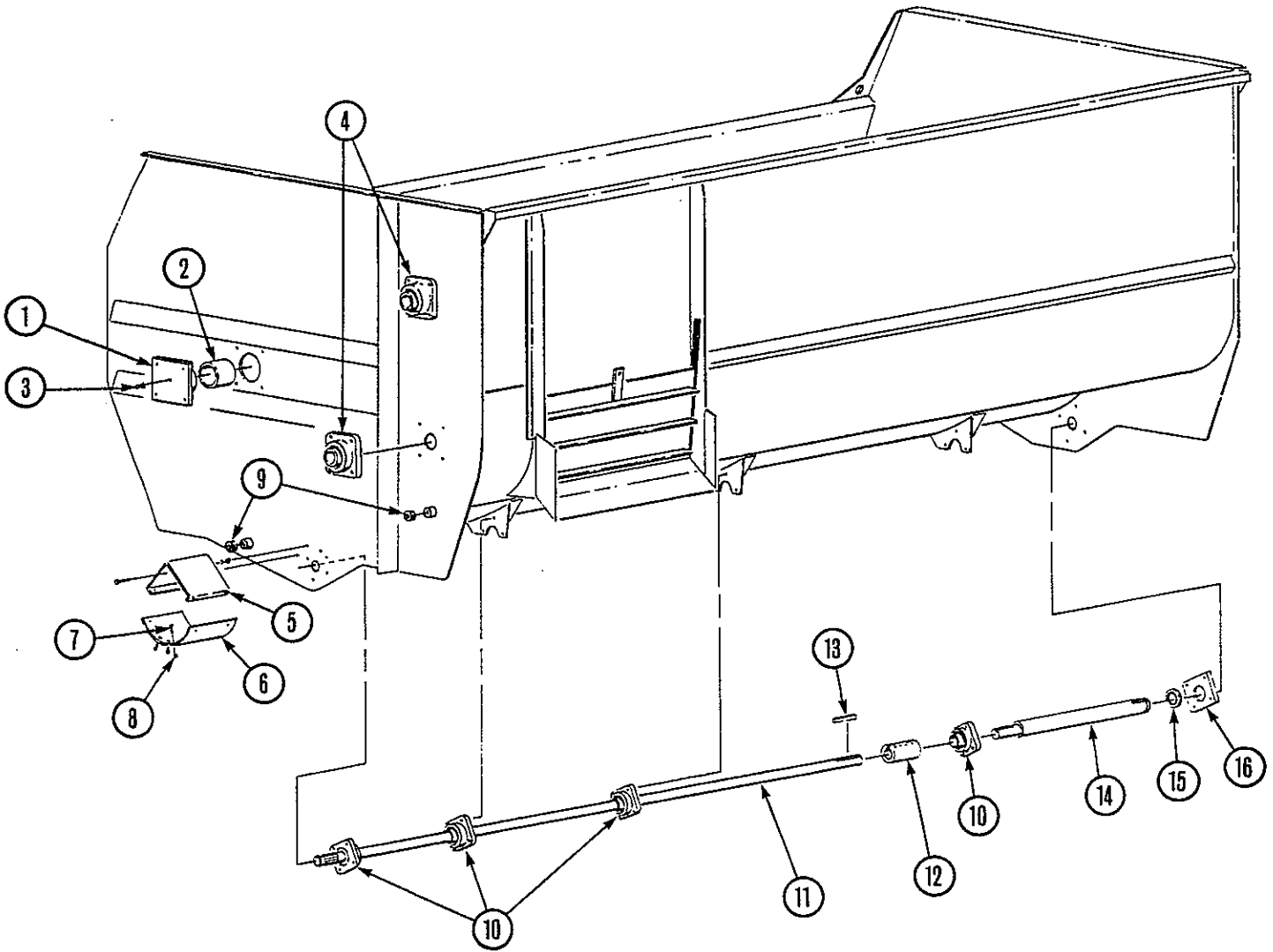


2 5 8

Bolt Head Grade Markings
Figure B

An asterisk (*) at the end of a part number (XXX-XXX*) indicates that the part is no longer used in production for this application.

Superscript letters (XXX-XXX^A) refer to footnotes and/or illustration boxes.



KNIGHT MANUFACTURING CORP. PO BOX 167 BROADHEAD, WI 53520
OFFICE: (608) 897-2131 PARTS/SERVICE: (608) 897-2125 FAX: (608) 897-2561

FRONT END AND DRIVESHAFT PARTS

3575/3700-TOW

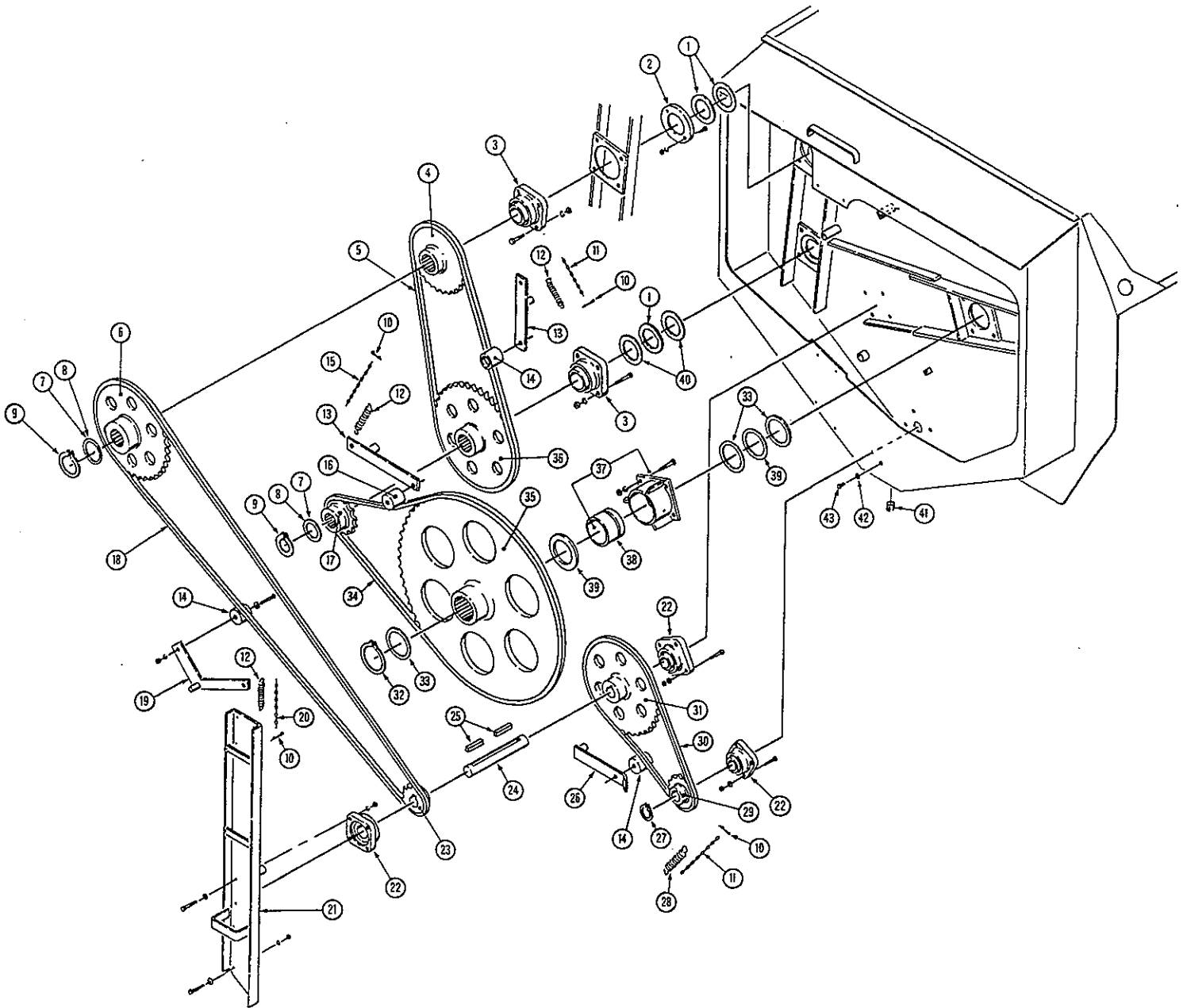
REF	PART NO	QTY	DESCRIPTION
1	102-322	1	Reel Bearing Assy
2	135-949	1	Bearing Sleeve
3	170-865	1	Zerk; 1/8" NPT
4	170-053	2	Bearing; 2 1/2" Roller
5	136-076	1	PTO Canopy
6	133-920	1	Blet; PTO Shield
7	172-987	4	Shear Bolt; 5/16" x 2" Grade 5 (540 RPM)
	172-986	4	Shear Bolt; 1/4" x 2" Grade 5 (1000 RPM)
8	170-028	4	Lock Nut; 5/16"
	170-069	4	Lock Nut; 1/4"
9	171-919	2	Pipe Plug; 1 1/4" PVC
10	172-288	4	Bearing; 1 1/2" Roller (Ecc. Lock)
11	136-062	1	Input Shaft; 1 1/2" x 134 1/2" (3575 only)
	136-010	1	Input Shaft; 1 1/2" x 164 1/2" (3700 only)
12	173-025	1	Collar; Split Coupler
13	172-818	1	Key; 3/8" x 3/8" x 3 1/2"
14	136-012	1	Input Shaft; 2" x 41-9/16"
15	172-998	1	Lip Seal; 2" I.D.
16	135-936	1	Seal Retaing Plate

An asterisk (*) at the end of a part number (XXX-XXX*) indicates that the part is no longer used in production for this application.

Superscript letters (XXX-XXX^A) refer to footnotes and/or illustration boxes.

REAR DRIVE PARTS

3575/3700-TOW



KNIGHT MANUFACTURING CORP. PO BOX 167 BROADHEAD, WI 53520
OFFICE: (608) 897-2131 PARTS/SERVICE: (608) 897-2125 FAX: (608) 897-2561

REAR DRIVE PARTS

3575/3700-TOW

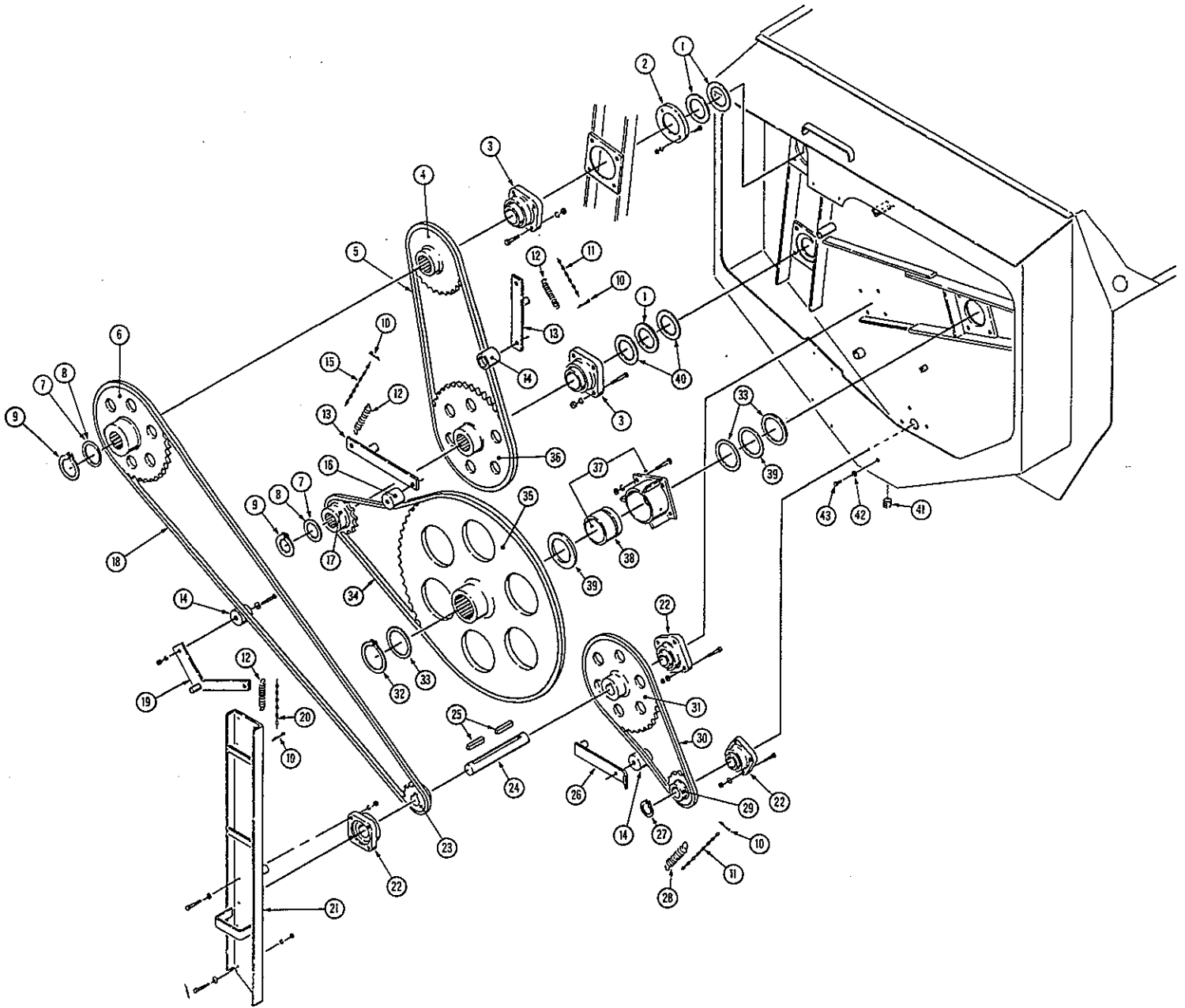
REF	PART NO	QTY	DESCRIPTION
1	135-697	3	Seal Washer - Plastic
2	135-985	1	Seal Housing; Mtg Hrd: 5/16" x 1-1/4" Bolt, Lw, Nut (2 ea)
3	170-445	2	Bearing; 3 1/2" Roller; Mtg Hrd: 3/4" x 3" Bolt, Lw, Nut (4 ea)
4	136-003	1	Sprocket; 120-B-24, 3 1/2" splined
5	173-014	1	Roller Chain; 120-1-71p.
6	136-002	1	Sprocket; 100-B-52, 3 1/2" splined
7	136-067	AIR	Thrust Shim; 10 Ga.
8	136-068	AIR	Thrust Shim; 16 Ga.
9	171-607	2	Retaining Ring; , 3 1/2" external
10	170-800	4	Spring Pin
11	170-845	2	Machine Chain; #4 x 17 links
12	172-751	3	Spring; 1 1/2" x 8 1/4"
13	102-331	2	Tightener Arm
14	134-155	3	Tightener Block; Mtg Hrd: 1/2" x 2-3/4" Bolt, Fw, Lw, Nut
15	171-045	1	Machine Chain; #4 x 22 links
16	134-086	1	Tightener Block; Mtg Hrd: 1/2" x 4" Bolt, Fw, Lw, Nut
17	136-005	1	Sprocket; 140-B-12, 3 1/2" splined
18	173-013	1	Roller Chain; 100-1-91p.
19	102-330	1	Tightener Arm
20	170-518	1	Machine Chain; #4 x 30 links
21	102-308	1	Rear Bearing Mount Assy; Mtg Hrd: 1/2" x 1-1/2" Bolt, Fw, Lw, Nut (8 ea)
22	170-008	3	Bearing; 2" Roller; Mtg Hrd: 5/8" x 2-1/4" Bolt, Fw, Lw, Nut (4 ea)

An asterisk (*) at the end of a part number (XXX-XXX*) indicates that the part is no longer used in production for this application.

Superscript letters (XXX-XXX^A) refer to footnotes and/or illustration boxes.

REAR DRIVE PARTS

3575/3700-TOW



KNIGHT MANUFACTURING CORP. PO BOX 167 BRODHEAD, WI 53520
OFFICE: (608) 897-2131 PARTS/SERVICE: (608) 897-2125 FAX: (608) 897-2561

REAR DRIVE PARTS

3575/3700-TOW R112596

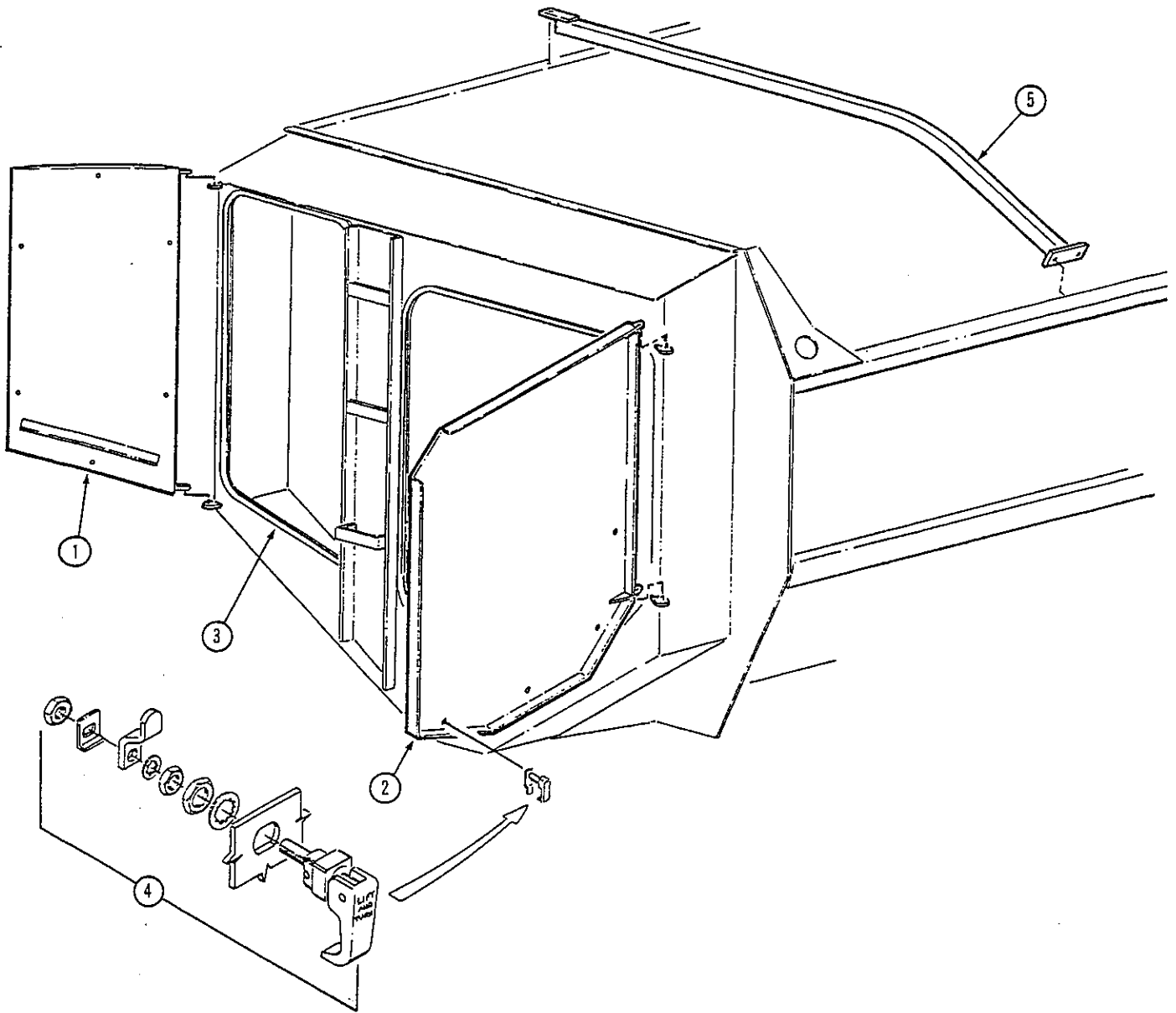
REF	PART NO	QTY	DESCRIPTION
23	136-001	1	Sprocket; 100-B-15, 2"
24	136-011	1	Counter Shaft; 2" dia.
25	171-695	2	Key - Straight; ½" sq. x 4½"
26	101-819	1	Tightener Arm
27	170-142	1	Retaining Ring; 2" external
28	172-005	1	Spring; 6" long
29	136-000	1	Sprocket; 80-B-18, 2" bore, ½" kw. <i>(1000 rpm)</i>
	135-996	1	Sprocket; 80-B-20, 2" bore, ½" kw. <i>(540 rpm)</i>
30	173-012	1	Roller Chain; 80-1-96 p. <i>(1000 rpm)</i>
	172-864	1	Roller Chain; 80-1-82 p. <i>(540 rpm)</i>
31	134-471	1	Sprocket; 80-B-63, 2" bore, ½" kw. <i>(1000 rpm)</i>
	135-997	1	Sprocket; 80-B-38, 2" bore, ½" kw. <i>(540 rpm)</i>
32	172-289	1	Retaining Ring; 5" external
33	135-994	3	Thrust Shim; 10 ga.
34	173-015	1	Roller Chain; 140-1-108 p.
35	134-447	1	Sprocket; 140-B-82; 5" splined
36	136-004	1	Sprocket; 120-B-45; 3½" splined
37	102-323	1	Bearing Assembly; 5" id.; Mtg Hrd: 7/8" x 2-1/4" Bolt, Lw, Nut (4 ea)
38	135-946	1	Bearing Sleeve; 5" id.
39	135-992	2	Seal Washer - Plastic
40	135-993	2	Seal Washer - Plastic
41	171-919	1	Drain Plug
42	172-884	1	Seal Washer - Plastic
43	170-149	1	Fill Plug; ½" x 1" bolt

An asterisk (*) at the end of a part number (XXX-XXX*) indicates that the part is no longer used in production for this application.

Superscript letters (XXX-XXX^A) refer to footnotes and/or illustration boxes.

DRIVE SHIELD AND TOP GUARD PARTS

3575/3700-TOW



KNIGHT MANUFACTURING CORP. PO BOX 167 BROADHEAD, WI 53520
OFFICE: (608) 897-2131 PARTS/SERVICE: (608) 897-2125 FAX: (608) 897-2561

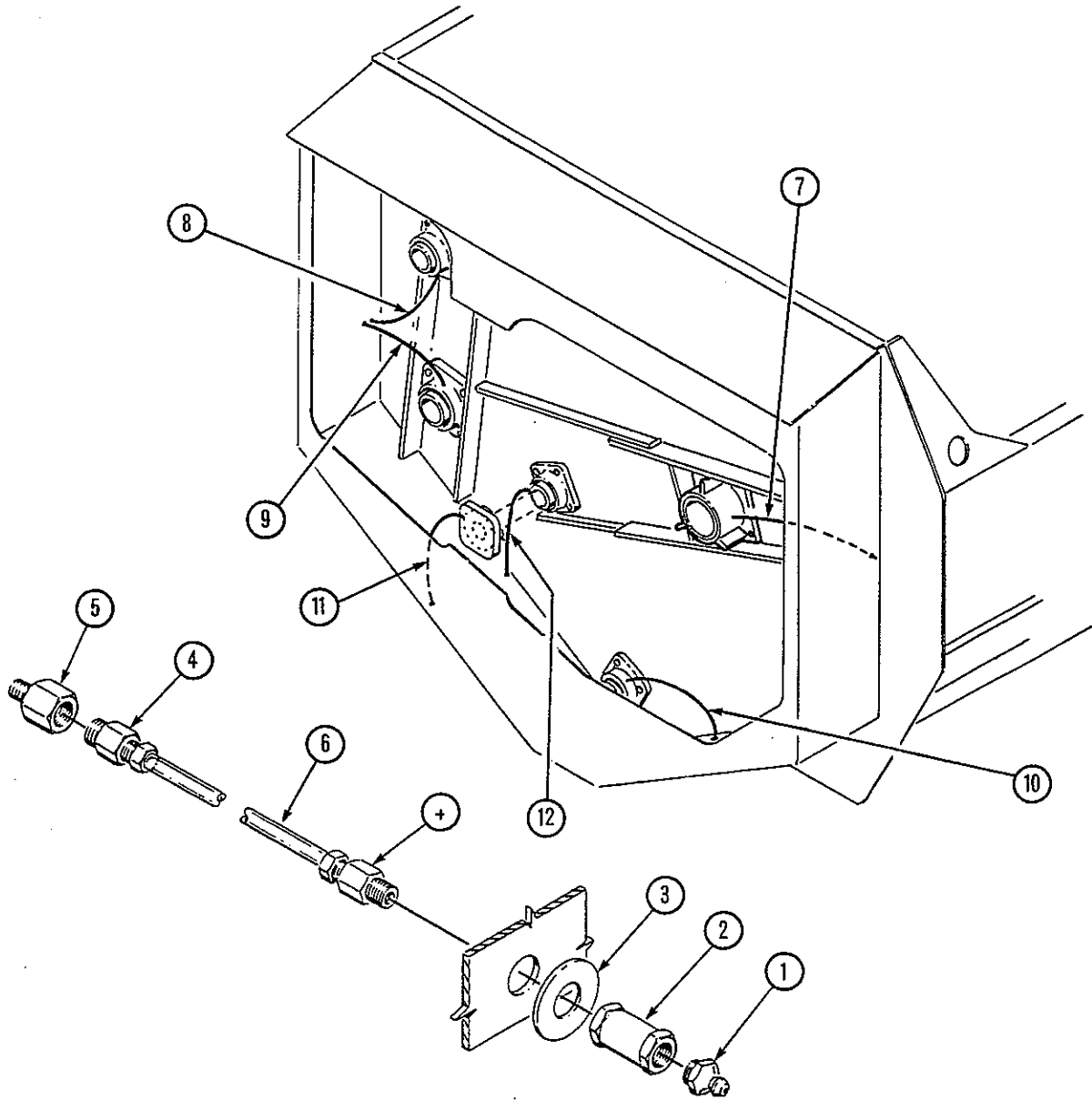
DRIVE SHIELD AND BUCKET GUARD PARTS

3575/3700-TOW

REF	PART NO	QTY	DESCRIPTION
1	102-309	1	Rear Shield (<i>Left</i>)
2	102-310	1	Rear Shield (<i>Right</i>)
3	171-935	28'	Foam Seal (<i>adhesive back</i>)
4	173-027	13	Lift and Turn Latch
5	102-329	3	Bucket Guard

An asterisk (*) at the end of a part number (XXX-XXX*) indicates that the part is no longer used in production for this application.

Superscript letters (XXX-XXX^A) refer to footnotes and/or illustration boxes.



KNIGHT MANUFACTURING CORP. PO BOX 167 BROADHEAD, WI 53520
OFFICE: (608) 897-2131 PARTS/SERVICE: (608) 897-2125 FAX: (608) 897-2561

GREASE LINE PARTS AND ROUTING

3575/3700-TOW

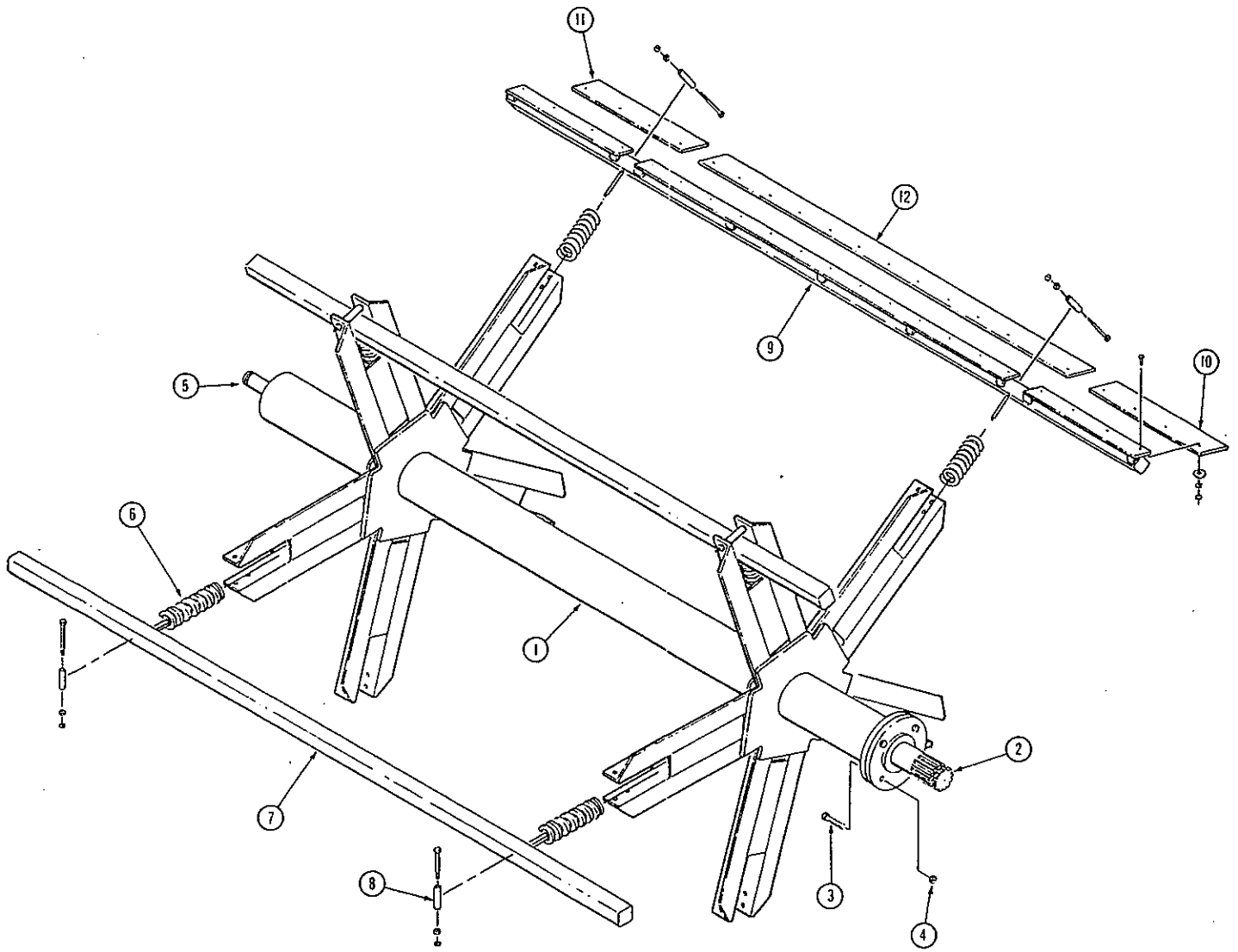
REF	PART NO	QTY	DESCRIPTION
1	170-865	6	Zerk; 1/8" NPT
2	172-024	6	Coupling; 1/8" NPT
3	170-244	6	Flat Washer; 3/8"
4	172-822	12	Compression Fitting; .18" tube
5	172-823	3	Adapter Fitting; 1/4" to 1/8" taper <i>(Used on input and counter shaft bearings only)</i>
6	180-630	11' 2"	Plastic Tubing <i>(11" 2" length is total tubing required for all grease lines)</i>
7	180-630	26"	Plastic Tubing <i>(required for reel bearing)</i>
8	180-630	26"	Plastic Tubing <i>(required for upper auger bearing)</i>
9	180-630	18"	Plastic Tubing <i>(required for lower auger bearing)</i>
10	180-630	26"	Plastic Tubing <i>(required input shaft bearing)</i>
11	180-630	18"	Plastic Tubing <i>(required rear counter shaft bearing)</i>
12	180-630	20"	Plastic Tubing <i>(required front counter shaft bearing)</i>

An asterisk (*) at the end of a part number (XXX-XXX*) indicates that the part is no longer used in production for this application.

Superscript letters (XXX-XXX^A) refer to footnotes and/or illustration boxes.

REEL PARTS

3575/3700-TOW



KNIGHT MANUFACTURING CORP. PO BOX 167 BROADHEAD, WI 53520
OFFICE: (608) 897-2131 PARTS/SERVICE: (608) 897-2125 FAX: (608) 897-2561

REEL PARTS

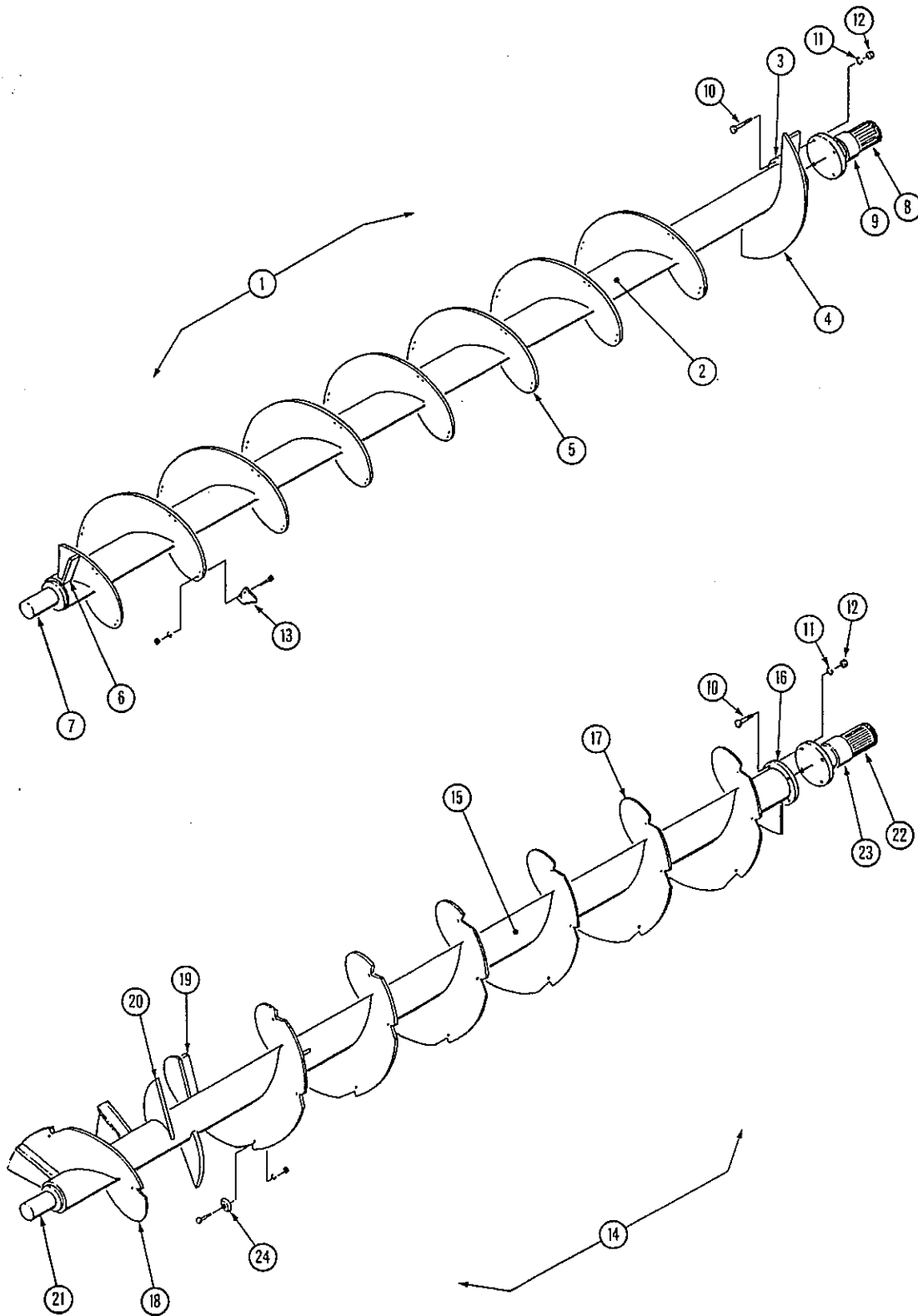
3575/3700-TOW

REF	PART NO	QTY	DESCRIPTION
1	102-320	1	Reel Assembly (3700 only)
	102-336	1	Reel Assembly (3575 only)
2	102-317	1	Rear Plug Assembly; 5" splined
3	173-021	4	Bolt; 1" x 3½" NC <i>(grade 5)</i>
4	173-022	4	Nut; 1" NC <i>(grade B)</i>
5	102-318	1	Front Plug Assembly
6	171-920	10	Spring-Compression; 2⅞" o.d. x 16" long
7	102-319	3	Cross Tube (3700 only)
	102-340	3	Cross Tube (3575 only)
8	135-968	10	Pipe-Reel Arm Stop; Mtg Hrd: ⅝" x 6½" Bolt, LW, Nut
9	102-321	2	Wiper Tube Assembly (3700 only)
	102-339	2	Wiper Tube Assembly (3575 only)
10	135-959	2	Wiper Blade-Rear; ¼" x 2½" x 29¾"
11	135-958	2	Wiper Blade-Front; ¼" x 2½" x 37¾"
12	135-960	2	Wiper Blade-Center; ¼" x 2½" x 119½" (3700 only)
	136-065	2	Wiper Blade-Center; ¼" x 2½" x 89½" (3575 only)

An asterisk (*) at the end of a part number (XXX-XXX*) indicates that the part is no longer used in production for this application.

Superscript letters (XXX-XXX^A) refer to footnotes and/or illustration boxes.

Parts pictured below are for 3575 units only.



KNIGHT MANUFACTURING CORP. PO BOX 167 BROADHEAD, WI 53520
OFFICE: (608) 897-2131 PARTS/SERVICE: (608) 897-2125 FAX: (608) 897-2561

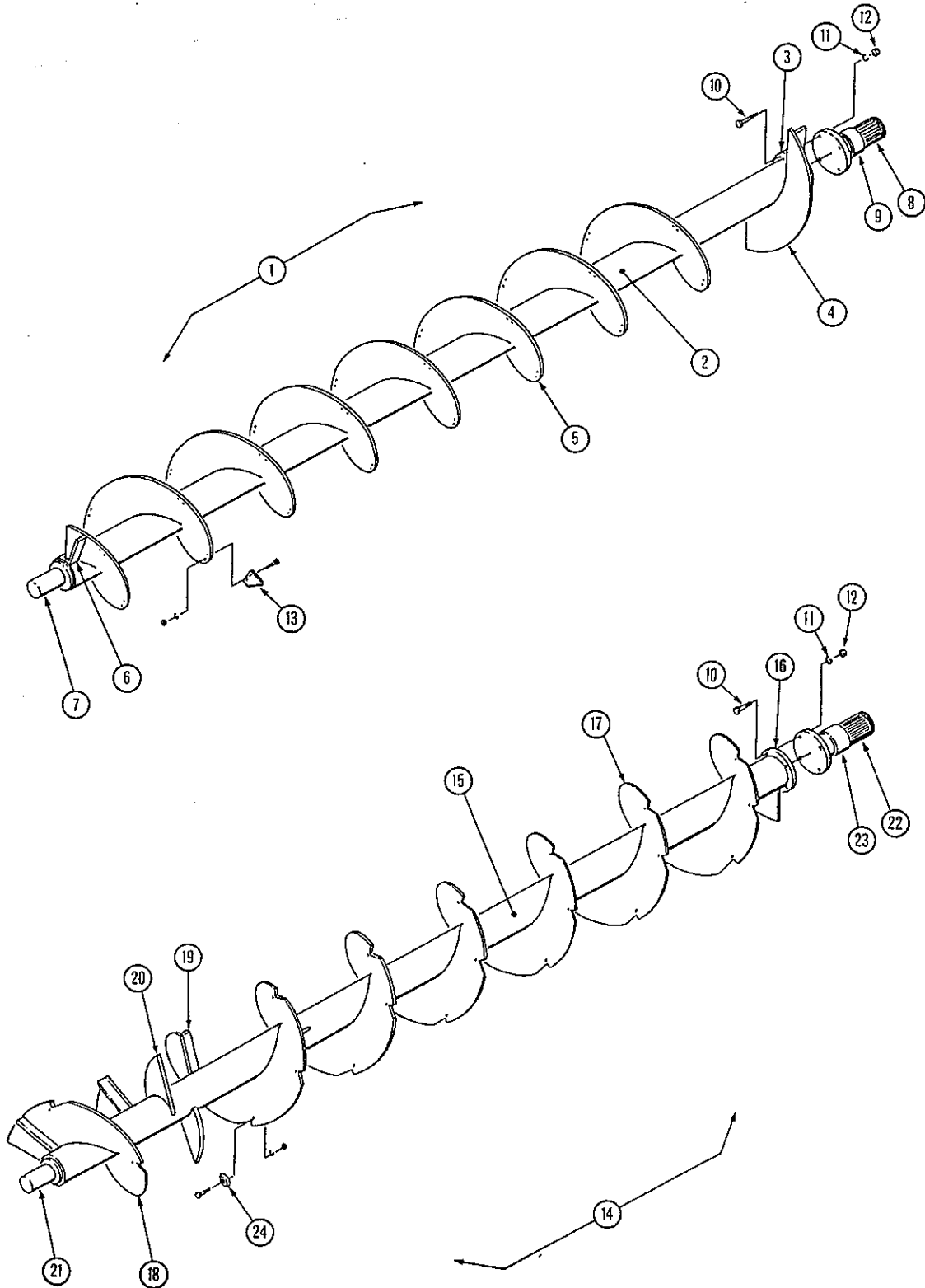
Parts listed below are for 3575 units only.

REF	PART NO	QTY	DESCRIPTION
1	102-338	1	Upper Auger Assy.
2	136-057	1	Auger Tube
3	135-967	1	Flange; Bolt Plate
4	135-969	1	Flight; LH $\frac{3}{8}$ " x 22" x 22" x 11"
5	135-970	6	Flight; RH $\frac{3}{8}$ " x 22" x 22" x 11"
6	135-971	4	Flight Brace
7	102-312	1	Shaft; Front Plug
8	102-315	1	Shaft; Rear Drive Assy
9	135-984	1	Spacer Tube
10	173-020	4	Bolt; $\frac{7}{8}$ " x 3 $\frac{1}{2}$ " (grade 5)
11	172-003	4	Lock Washer; $\frac{7}{8}$ "
12	171-776	4	Hex Nut; $\frac{7}{8}$ "
13	133-835	34	Auger Knife; Mtg Hrd: $\frac{1}{4}$ " x $\frac{7}{8}$ " bolt, LW, Nut (2 ea)
14	102-337	1	Lower Auger Assy.
15	136-057	1	Auger Tube
16	135-967	1	Flange; Bolt Plate
17	135-973	5	Flight; LH $\frac{1}{2}$ " x 24" x 24"
18	135-974	1	Flight; RH $\frac{1}{2}$ " x 24" x 24"
19	135-972	8	Flight Brace
20	135-976	2	Auger Paddle
21	102-312	1	Shaft; Front Plug
22	102-313	1	Shaft; Rear Drive Assy.
23	135-983	1	Spacer Tube
24	134-352	19	Auger Knife; Mtg Hrd: $\frac{3}{8}$ " x 1 $\frac{1}{4}$ " bolt, LW, Nut

An asterisk (*) at the end of a part number (XXX-XXX*) indicates that the part is no longer used in production for this application.

Superscript letters (XXX-XXX^A) refer to footnotes and/or illustration boxes.

Parts pictured below are for 3700 units only.



KNIGHT MANUFACTURING CORP. PO BOX 167 BROADHEAD, WI 53520
OFFICE: (608) 897-2131 PARTS/SERVICE: (608) 897-2125 FAX: (608) 897-2561

*Parts listed below are for **3700** units only.*

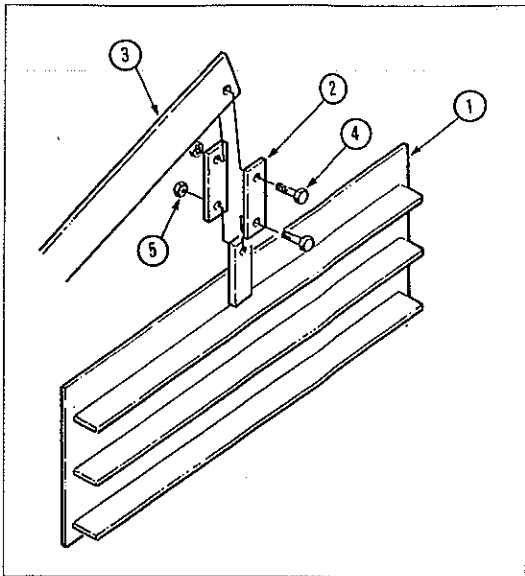
REF	PART NO	QTY	DESCRIPTION
1	102-314	1	Upper Auger Assy.
2	135-962	1	Auger Tube
3	135-967	1	Flange; Bolt Plate
4	135-969	1	Flight; LH 3/8" x 22" x 22" x 11"
5	135-970	7	Flight; RH 3/8" x 22" x 22" x 11"
6	135-971	4	Flight Brace
7	102-312	1	Shaft; Front Plug
8	102-315	1	Shaft; Rear Drive Assy
9	135-984	1	Spacer Tube
10	173-020	4	Bolt; 7/8" x 3 1/2" (grade 5)
11	172-003	4	Lock Washer; 7/8"
12	171-776	4	Hex Nut; 7/8"
13	133-835	43	Auger Knife; Mtg Hrd: 1/4" x 7/8" bolt, LW, Nut (2 ea)
14	102-311	1	Lower Auger Assy.
15	135-962	1	Auger Tube
16	135-967	1	Flange; Bolt Plate
17	135-973	6	Flight; LH 1/2" x 24" x 24"
18	135-974	1	Flight; RH 1/2" x 24" x 24"
19	135-972	8	Flight Brace
20	135-976	2	Auger Paddle
21	102-312	1	Shaft; Front Plug
22	102-313	1	Shaft; Rear Drive Assy.
23	135-983	1	Spacer Tube
24	134-352	24	Auger Knife; Mtg Hrd: 3/8" x 1 1/4" bolt, LW, Nut

An asterisk (*) at the end of a part number (XXX-XXX*) indicates that the part is no longer used in production for this application.

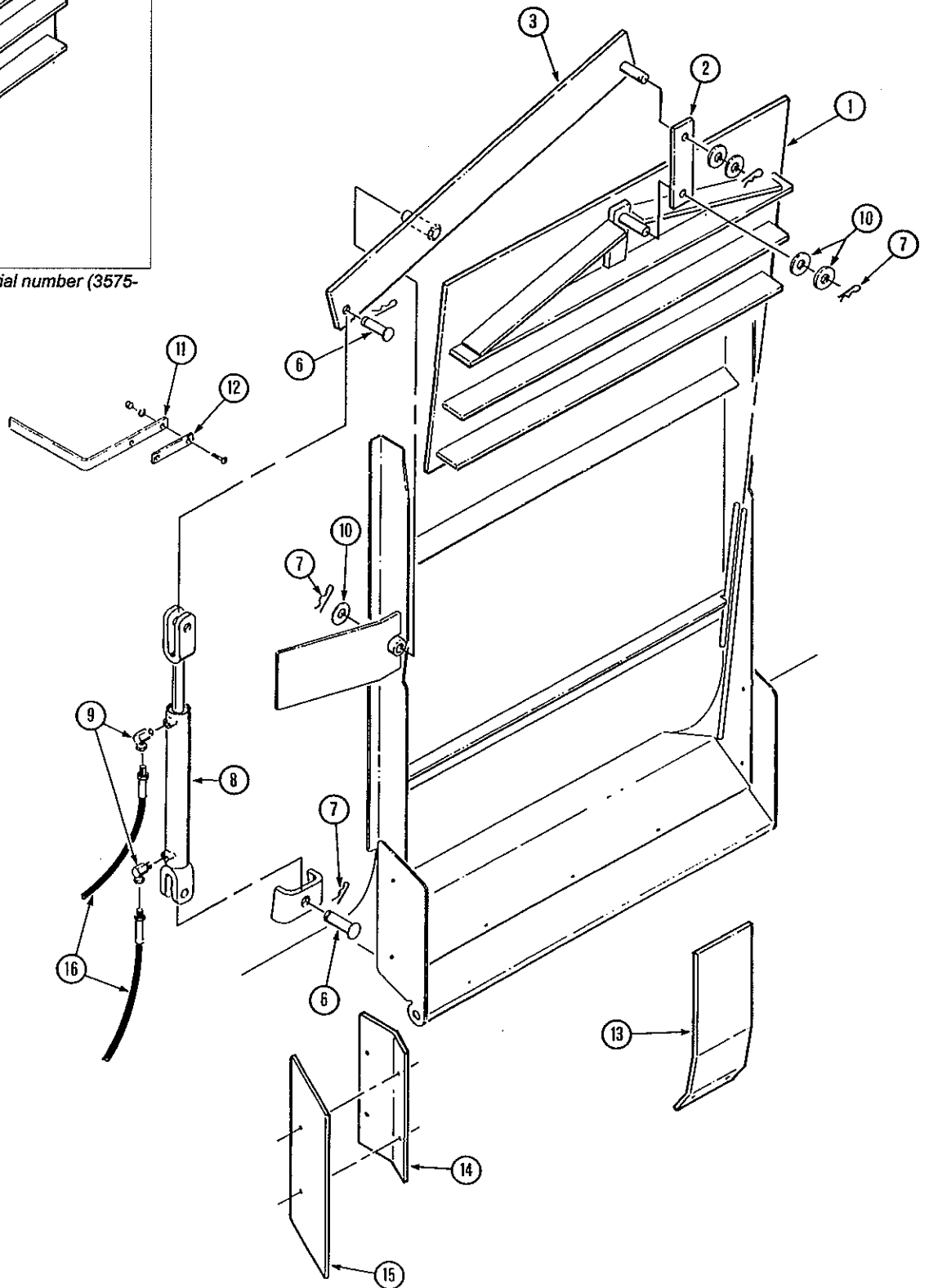
Superscript letters (XXX-XXX^A) refer to footnotes and/or illustration boxes.

DOOR PARTS

3575/3700-TOW R050197



Door parts used on units before serial number (3575-119), (3700-98).



DOOR PARTS

3575/3700-TOW R102897

(Door parts used on units; serial number 3575-119, 3700-98 and after)

REF	PART NO	QTY	DESCRIPTION
1	102-295	1	Door Assembly
2	136-254	1	Door Linkage
3	102-382	1	Door Linkage Arm Assy.
6	170-073	2	Clevis Pin; 1" dia.
7	170-074	5	Hair Pin Clip; .12 x 3"
8	172-441	1	Hydraulic Cylinder; 2" dia. x 10" stroke <i>(order seal kit 172-446)</i>
9	171-030	2	Swive Adapter; 5/8" x 90°
10	170-122	5	Flat Washer; 1" SAE
11	135-859	1	Door Guage Retainer
12	133-978	1	Door Guage; Mtg Hrd: 1/4" x 1" pan head screw, Lw, Nut (2 ea)
13	102-387	1	Flow Control Plate <i>(if needed)</i>
14	136-142	2	Seal Retainer Plate <i>(power chute option only)</i>
15	136-143	2	Chute Seal <i>(power chute option only)</i>
16	170-471	2	Hydraulic Hose; 1/4" x 170"

(Door parts used on units before serial number 3575-119, 3700-98)

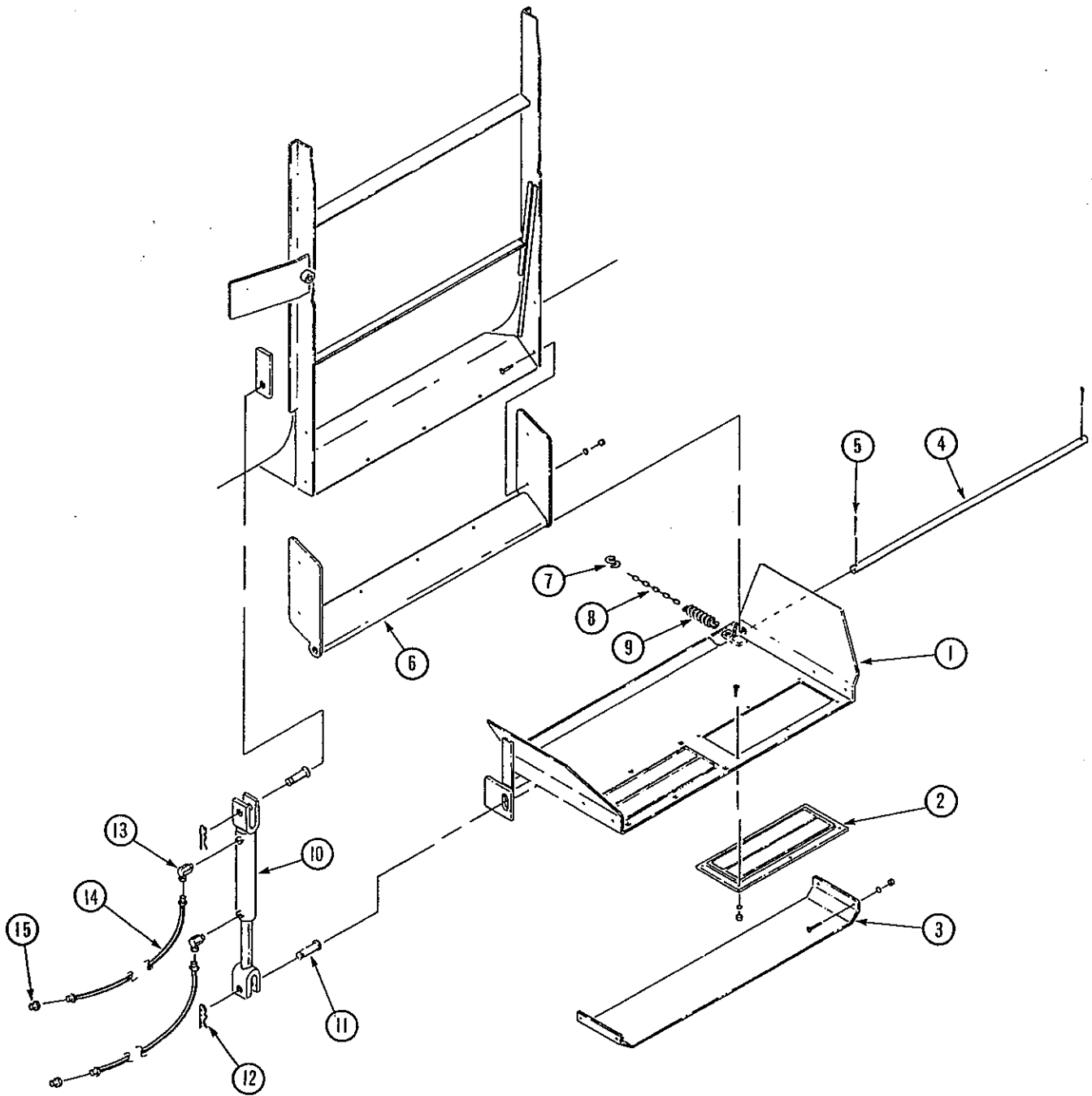
REF	PART NO	QTY	DESCRIPTION
1	102-296	1	Door Assembly
2	133-445	2	Door Linkage
3	102-299	1	Door Linkage Arm Assy.
4	173-009	2	Bolt; 5/8" x 2 1/4" Hex head
5	170-031	2	Lock Nut; 5/8"
6	170-073	2	Clevis Pin; 1" dia.
7	170-074	3	Hair Pin Clip; .12 x 3"
8	170-941	1	Hydraulic Cylinder; 2" dia. x 8" stroke <i>(order seal kit 170-075)</i>
9	171-030	2	Swive Adapter; 5/8" x 90°
10	170-122	1	Flat Washer; 1" SAE
11	135-859	1	Door Guage Retainer
12	133-978	1	Door Guage; Mtg Hrd: 1/4" x 1" pan head screw, Lw, Nut (2 ea)
13	101-946	1	Flow Control Plate
14	136-142	2	Seal Retainer Plate <i>(power chute option only)</i>
15	136-143	2	Chute Seal <i>(power chute option only)</i>
16	170-471	2	Hydraulic Hose; 1/4" x 170"

An asterisk (*) at the end of a part number (XXX-XXX*) indicates that the part is no longer used in production for this application.

Superscript letters (XXX-XXX^A) refer to footnotes and/or illustration boxes.

SLIDE TRAY PARTS

3575/3700-TOW



KNIGHT MANUFACTURING CORP. PO BOX 167 BRODHEAD, WI 53520
OFFICE: (608) 897-2131 PARTS/SERVICE: (608) 897-2125 FAX: (608) 897-2561

SLIDE TRAY PARTS

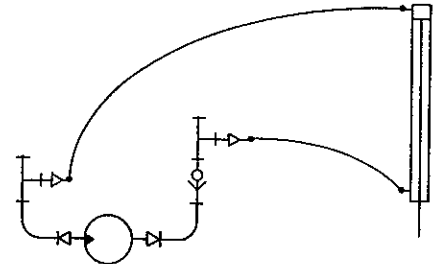
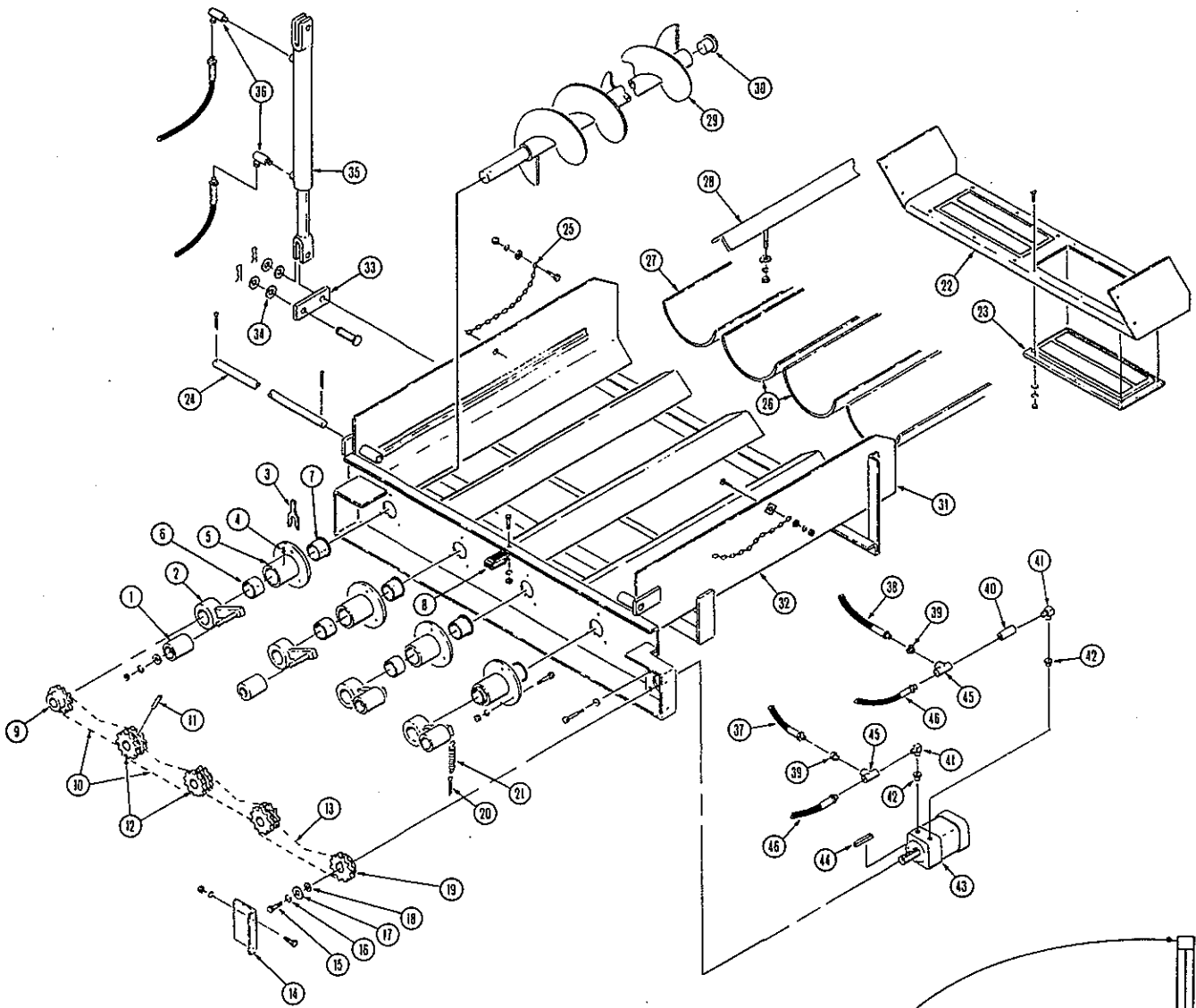
3575/3700-TOWR052698

REF	PART NO	QTY	DESCRIPTION
1	102-328 ^A	1	Slide Tray Assembly
2	173-346	3	Discharge Magnet
	173-010 ^A	2	Discharge Magnet
3	135-981	1	Skid Plate
4	135-980	1	Pivot Rod
5	170-115	1	Cotter Key
6	102-298	1	Door Frame Extension
7	170-947	1	Wire "S" Hook #772
8	170-032	1	Machine Chain; #4 x 10 links
9	172-005	1	Spring - Expansion; 36 coils x 6" long
10	170-941	1	Hydraulic Cylinder; 2" dia. x 8" stroke
11	170-073	2	Clevis Pin
12	170-074	2	Hair Pin Clip
13	171-030	2	Swivel Adapter; _" x 90°
14	170-471	2	Hydraulic Hose; ¼" x 170" OAL
15	170-235	2	Reducer Fitting; ½" x _" NPT

A: Slide tray parts for units built before serial number (3575-169), (3700-146) have been discontinued. If ordering a new slide tray assembly, new magnets must also be ordered.

POWER CHUTE PARTS

3575/3700-TOW



POWER CHUTE PARTS

REF	PART NO	QTY	DESCRIPTION
	102-345	1	Complete Chute Assembly
1	134-395	4	Poly Block Mtg Hrd: 5/8" LW & Jam Nut
2	101-231	4	Chain Tightener Arm
3	171-265	A/R	Shim; .017" Thick
	171-266	A/R	Shim; .030" Thick
4	170-865	4	Zerk; 1/8" NPT
5	101-227	4	Auger Bearing Assy; Mtg Hrd: 1-3/8" x 1" Bolt, LW, Nut (3 ea)

KNIGHT MANUFACTURING CORP. PO BOX 167 BROADHEAD, WI 53520
 OFFICE: (608) 897-2131 PARTS/SERVICE: (608) 897-2125 FAX: (608) 897-2561

POWER CHUTE PARTS

3575/3700-TOW

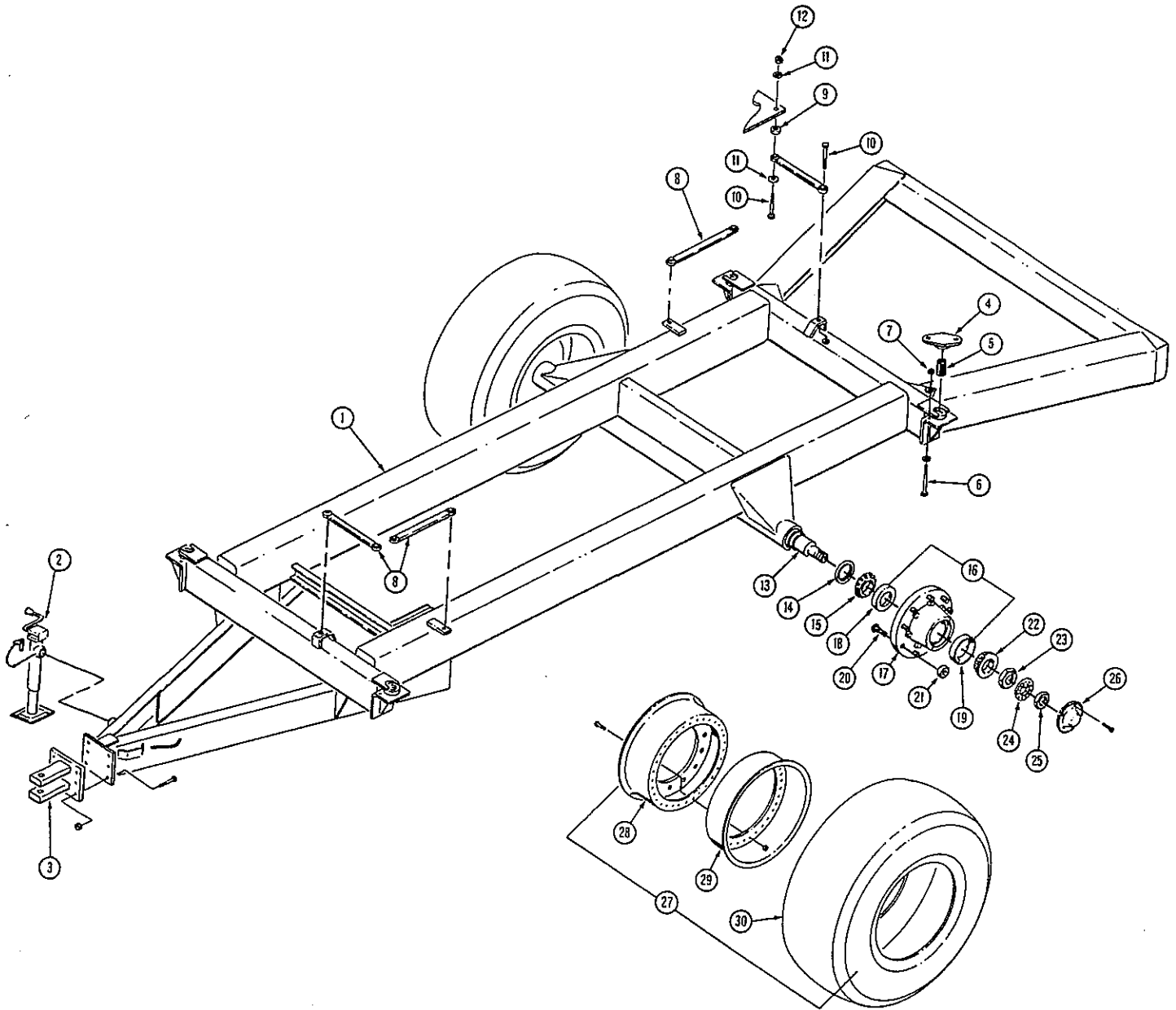
REF	PART NO	QTY	DESCRIPTION
6	171-259	1	Bushing; Bronze, 1-3/8" I.D.
7	171-260	1	Bushing; Bronze 1-3/8" I.D. Flanged
8	171-782	1	Double Hose Clamp; Mtg Hrd: 5/16" x 3/4" Bolt, LW & Nut
9	132-701	1	Sprocket; 50-B-18, 1-3/8" Bore
10	171-932	3	Roller Chain; 50-1-56 Pitch
11	171-297	4	Roll Pin; 1/4" x 2-1/2"
12	134-390	3	Sprocket; 50-2R-18, 1-3/8" Bore
13	171-178	1	Roller Chain; 50-1-48 Pitch
14	134-394	1	Motor Drive Shield; Mtg Hrd: 5/16" x 3/4" Bolt, LW & Nut (2 ea)
15	170-262	1	Bolt; 5/16" x 3/4" Hex Head
16	170-118	1	Washer; 5/16" Lock
17	170-302	1	Washer; 3/8" Heavy
18	171-576	1	Machine Washer
19	134-389	1	Sprocket; 50-B-18, 1" Bore, Inc. 170254 S.S.
20	170-135	4	Cotter Pin; 5/32" x 3"
21	170-110	4	Spring
22	102-347	1	Tipoff Assembly; Mtg Hrd: 5/16" x 3/4" Bolt, LW & Nut (4 ea)
23	173-010	2	Magnet Mtg Hrd: 1/4" x 3/4" Truss Head Bolt, LW, FW & Nut (6 ea)
24	136-135	1	Tipoff Pivot Rod Mtg Hrd: 170-115 Cotter Pin (2 ea)
25	171-938	1	Chain; 4/0 Coil x 21 Link Mtg Hrd: 5/16" x 1" Bolt, (FW 2 ea), LW & Nut , 5/16" x 1" Truss Head Bolt, FW, LW, Nut (1 ea)
26	133-943	2	Plastic Chute Liner - Center
27	133-942	2	Plastic Chute Liner - Side Mtg Hrd: 1/4" x 3/4" Truss Head Bolt, LW & Nut (2 ea)
28	101-738	3	Liner Hold-Down Assy Mtg Hrd: 1/2" Nut Gr 8, 3/8" FW, 3/8" LockNut (2 ea)
29	101-736	4	Auger Assy
30	171-186	4	Plastic Cap Plug; #16
31	102-346	1	Chute Weldment
32	101-739	1	Chute Restraint Chain Assy; Mtg Hrd: 5/16" x 1" Truss Head Bolt, FW, LW & Nut & 3/8" Fw, LN
33	133-952	1	Chute Cylinder LinkageBar; Mtg Hrd: 170-074 Hairpin Clip (2 ea)
34	170-122	5	Spacer Washer; 1" Sae Flat
35	170-161	1	Hydraulic Cylinder; 2" x 18" (Seal Kit #170-075)
36	171-030	2	Swivel Adapter; 3/8" x 90 Degree
37	171-427	1	Hyd Hose; 1/4" x 82" Overall Length
38	171-462	1	Hyd Hose; 1/4" x 64" Overall Length
39	170-235	2	Reducer Bushing; 1/2" to 3/8"
40	171-151	1	Line Check Valve; 1/2"
41	171-136	2	90 ° Street Elbow; 1/2"
42	171-668	2	Straight Thread Adapter
43	171-666	1	Hyd Motor; 12 cu. in. (Seal Kit #171-257) Mtg Hrd: 3/8" x 7/8" Bolt, LW (4 ea)
44	171-883	1	Key; 1/4" x 1/4" x 1" Long
45	170-859	2	Service Tee; 1/2"
46	171-330	2	Hyd Hose; 1/2" x 168" Overall Length

An asterisk (*) at the end of a part number (XXX-XXX*) indicates that the part is no longer used in production for this application.

Superscript letters (XXX-XXX^A) refer to footnotes and/or illustration boxes.

UNDERCARRIAGE PARTS

3575/3700-TOW



KNIGHT MANUFACTURING CORP. PO BOX 167 BROADHEAD, WI 53520
OFFICE: (608) 897-2131 PARTS/SERVICE: (608) 897-2125 FAX: (608) 897-2561

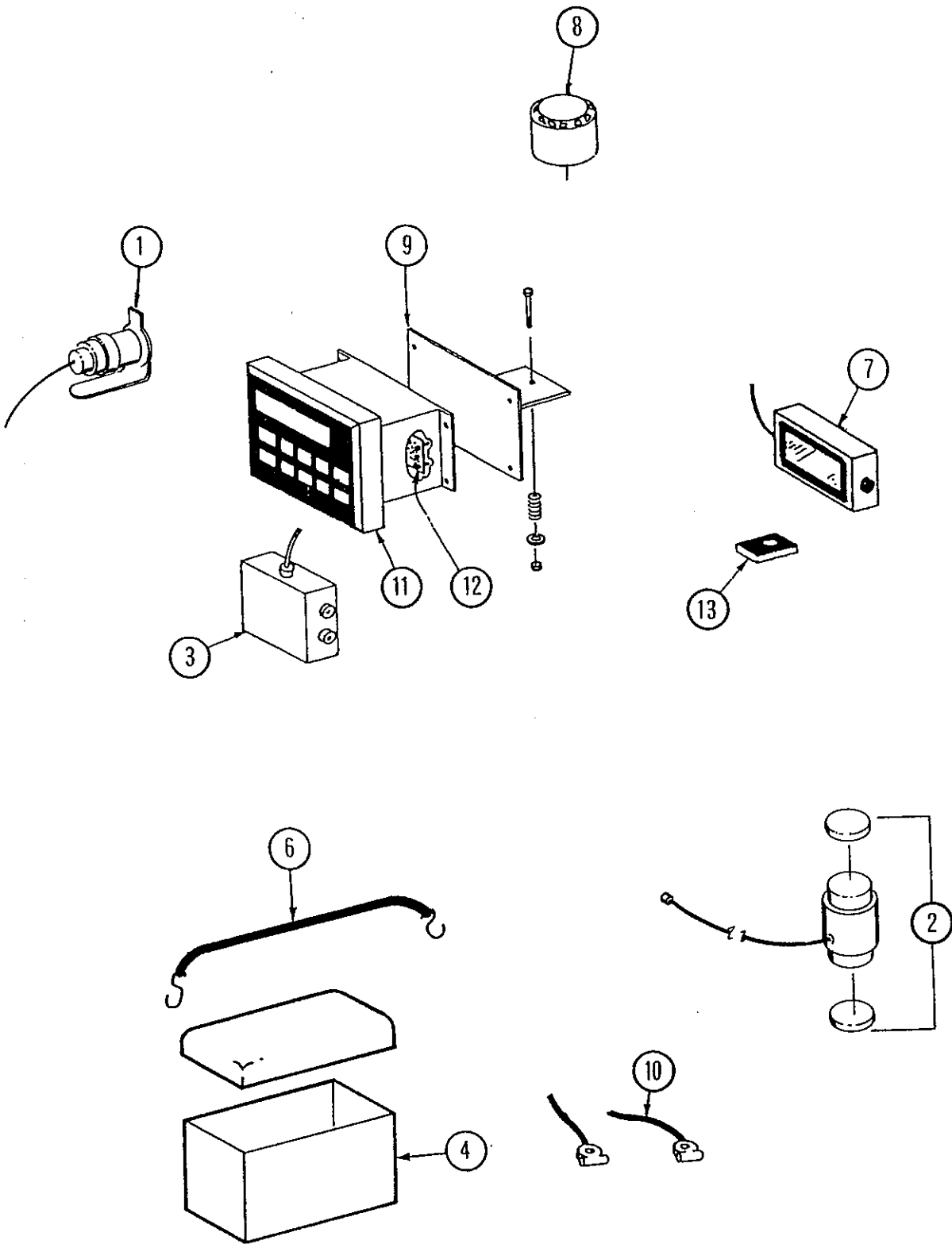
UNDERCARRIAGE PARTS

3575/3700-TOW R012897

REF	PART NO	QTY	DESCRIPTION
1	102-306	1	Undercarriage Weldment (3700 only)
	102-333	1	Undercarriage Weldment (3575 only)
2	171-610	1	Jackstand; (refer to jackstand pages for parts identification)
3	102-307	1	Clevis Hitch Assembly; Mtg Hrd: 3/4" x 2" Bolt (grade 8), LN (grade 8)
4	102-325	4	Load Cell Mount; Mtg Hrd:
5	135-9 61	4	Dummy Load Cell
6	173-019	4	Retaining Bolt; 5/8" x 7 1/2" (grade 5) use 5/8" (170-006) flat washer also.
7	170-031	4	Lock Nut; 5/8" (grade 5) use 5/8" (170-006) flat washer also.
8	102-326	4	Check Arm
9	135-917	4	Plate; Spacer Disk
10	171-899	8	Bolt; 3/4" x 2 (grade 8)
11	170-015	8	Flat Washer; 3/4"
12	171-900	8	Lock Nut; 3/4" (grade 8)
13	135-918	2	Axle Spindle
14	173-006	2	Grease seal
15	173-001	2	Bearing Cone; (tapered)
16	172-999	2	Wheel Hub Assy.; 10 bolt
17	173-000	1	Wheel Hub; 10 bolt
18	173-031	1	Bearing Race
19	173-032	1	Bearing Race
20	173-033	10	Wheel Stud; 3/4" NF
21	170-920	10	Lug Nut; 3/4" NF
22	173-002	2	Bearing Cone; (tapered)
23	173-003	2	Spindle Nut
24	173-004	2	Lock Washer
25	173-005	2	Spindle Nut
26	173-007	2	Hub Cap; Mtg Hrd: 5/16" x 3/4" Bolt (4 ea)
27	173-008	2	Wheel and Tire Assy.
28	173-170	1	Wheel Rim (inner); Mtg Hrd: 1/2" x 1 1/4" Bolt (grade 5), LN (32 ea)
29	173-171	1	Wheel Rim (outer)
30	173-172	1	Tire 42" x 16"
31		1	Inner Tube 42" x 16"
29	172-312	2	Wheel Rim; 10 bolt (optional, 3575 only)
30	172-313	2	Tire; 18 x 22.5 (optional, 3575 only)

An asterisk (*) at the end of a part number (XXX-XXX*) indicates that the part is no longer used in production for this application.

Superscript letters (XXX-XXX^A) refer to footnotes and/or illustration boxes.



EATON SCALE PARTS

3575/3700-TOW

REF	PART NO	QTY	DESCRIPTION
1	170-415	1	Plug - Tractor Mount
1	172-333	1	Power Cord Assembly
2	173-034	4	Load Cell
	173-028	1	Load Cell Kit; includes 4 load cells, mounts, seals, pads, operator book
3	172-335	1	Junction Box With 15' Cord Mtg Hrd: #10-32 x 3/4" Machine Screw, FW, LW & Nut (4 ea)
4	171-158	1	Battery Box With Cover
6	171-936	1	Battery Hold-Down Strap; 5/16" x 1-1/4" Bolt, Nut, FLN (1 ea), FW (2 ea)
7	172-336	1	Remote Display With 30' Cable
8	101-916	1	Alarm Horn Assembly Mtg Hrd: #6 x 3/4" Bolt, LW & Nut (2 ea)
9	133-378	1	Indicator Mount Mtg Hrd: 170-238 Spring, 3/8" x 2" Bolt, FW & LN
10	171-380	2	Battery Terminals

Items Used With Model 9TL Only:

11	172-499	1	Indicator; Model 9TL ; Mtg Hrd: 3/8" x 1" Bolt, LW (1 ea.)
	172-498	1	Operator Manual; Model 9TL

Items Used With Model 99B Only:

11	172-329	1	Indicator; Model 99B; Mtg Hrd: 1/4" x 3/4" Bolt, FW, LW & Nut (4 ea)
	172-339	1	Operator's Manual; Model 99B

Items Used With Model 99S Only:

11	172-331	1	Indicator; Model 99S; Mtg Hrd: 1/4" x 3/4" Bolt, FW, LW & Nut (4 ea)
	172-340	1	Operator's Manual; Model 99S
12	172-337 ^A	1	Radio Control Package
13	172-338	1	Transmitter; Radio Control

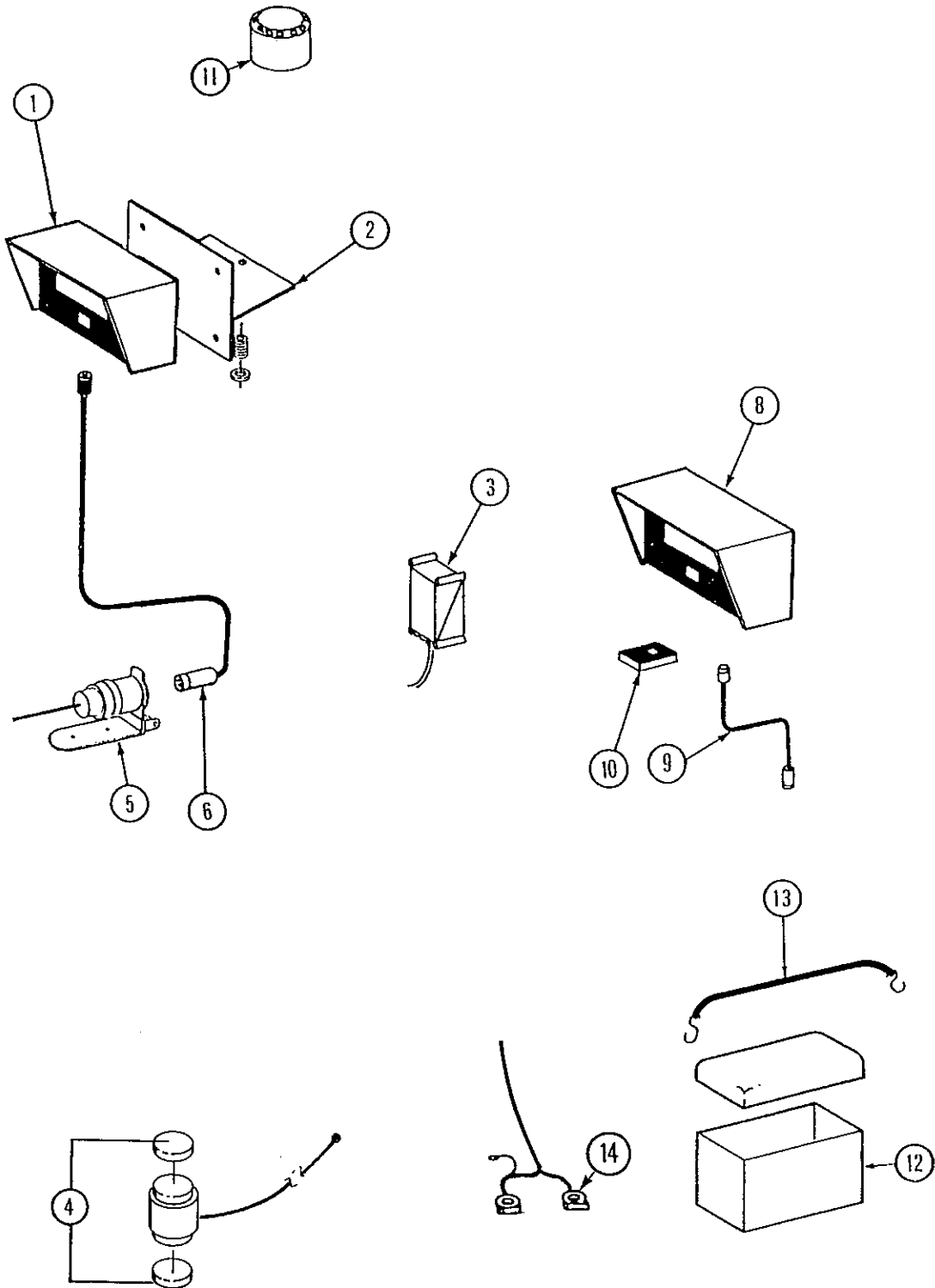
Service Tools:

	172-386	1	Precision Calibrator For Scale Indicators
--	---------	---	-------------------------------------------

A: Indicator must be sent to Knight Mfg. for radio control card installation.

An asterisk (*) at the end of a part number (XXX-XXX*) indicates that the part is no longer used in production for this application.

Superscript letters (XXX-XXX^A) refer to footnotes and/or illustration boxes.



KNIGHT MANUFACTURING CORP. PO BOX 167 BROADHEAD, WI 53520
OFFICE: (608) 897-2131 PARTS/SERVICE: (608) 897-2125 FAX: (608) 897-2561

DIGI-STAR SCALE PARTS

3575/3700-TOW R112596

REF	PART NO	QTY	DESCRIPTION
1	172-128	1	Model EZ-150 Indicator
	172-130	1	Model EZ-210 Indicator
	172-500	1	Model EZ-320 Indicator
	172-800	1	Model EZ-View 150 Indicator, 1.7" Display Mtg Hrd: 1/4" x 3/4" Bolt, FW, LW & Nut (2 ea)
2	101-835	1	Indicator Mount Mtg Hrd: Spring (170-238) 3/8" x 2" Bolt, FW & LN
3	172-134	1	Junction Box; 10-32 x 3/4" PHMS Machine Screw, LW, FW & Nuts (4 ea)
	173-156	1	J-Box Cable Assembly
4	173-034	4	Load Cell
	173-028	1	Load Cell Kit; includes 4 load cells, mounts, seals, pads, operator book
	171-960	1	Splice Kit - For Load Cell Cord Repair
5	170-415	1	Plug - Tractor Mount
6	172-354	1	Power Cord Assy

Optional Items:

8	172-801	1	EZ-View Remote, 1.7" Display w/ 25' Cord
	172-802	1	EZ-View TR Remote, 1.7" Display w/ Transmitter & 25' Cord
	172-803	1	EZ-R Remote, 1" Display w/ 25' Cord
	172-804	1	EZ-R Remote, 1" Display w/ Transmitter & 25' Cord
9	172-142	1	Cable For P/N 172-140 & 172-141
10	172-143	1	Extra Transmitter For Model 20R/TR
	172-165	1	30' J-Box Extension Cable (Optional)
	172-166	1	10' J-Box Extension Cable (Optional)
11	101-917	1	Alarm Horn Assembly Mtg Hrd: #6 x 3/4" Bolt, LW & Nut (2 ea)
12	171-158	1	Battery Box
13	171-936	1	Battery Hold-Down Strap; 5/16" x 1-1/4" FLN, Nut (1 ea) & FW (2 ea) "S" Hooks (2 ea)
14	171-380	2	Battery Terminals
15	134-409	1	Remote Indicator Mount; Mtg Hrd: 5/16 x 3/4 Bolt, Lw, Nut (2 ea), 1/4 x 3/4 Bolt, Fw, Lw, Nut (2 ea)

Service Tools:

	172-386	1	Precision Calibrator For Scale Indicators
--	---------	---	-------------------------------------------

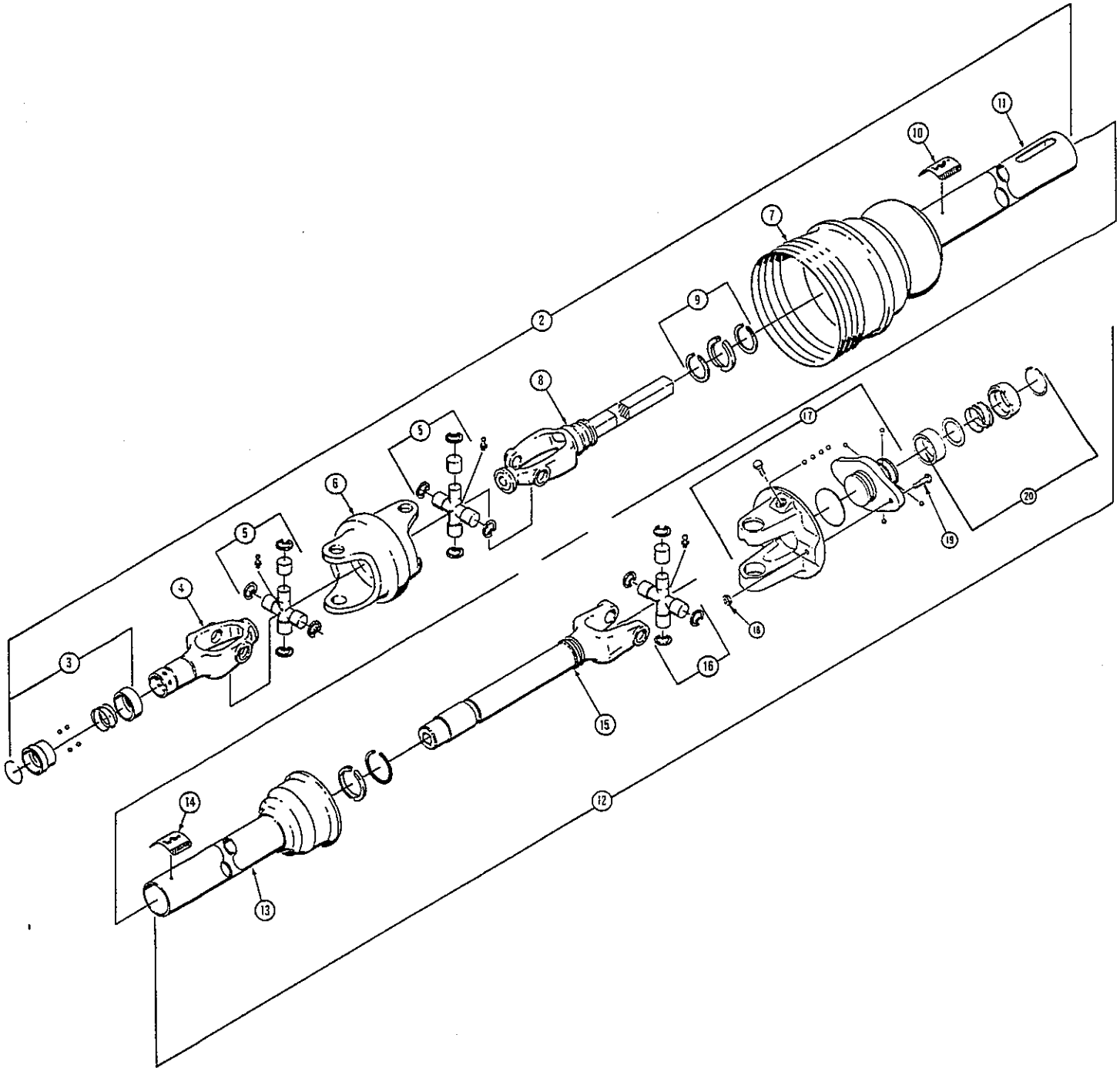
An asterisk (*) at the end of a part number (XXX-XXX*) indicates that the part is no longer used in production for this application.

Superscript letters (XXX-XXX^A) refer to footnotes and/or illustration boxes.

PTO DRIVELINE & FRICTION CLUTCH

3575/3700-TOW

**(540 RPM - 6 SPLINE) Weasler Constant Velocity PTO
(1-3/8" YOKE)**



KNIGHT MANUFACTURING CORP. PO BOX 167 BRODHEAD, WI 53520
OFFICE: (608) 897-2131 PARTS/SERVICE: (608) 897-2125 FAX: (608) 897-2561

PTO DRIVELINE & PARTS

3575/3700-TOW

**(540 RPM - 6 SPLINE) Weasler Constant Velocity PTO
(1-3/8" YOKE)**

REF	PART NO	QTY	DESCRIPTION
1	172-920	1	80° CV- PTO Assembly (<i>Shear bolt type</i>)
2	172-842	1	Outer Joint and Tube Half with Guard
3	171-544	1	Safety Slide Lock Repair Kit
4	172-991	1	Spring Lock Yoke Assembly (1-3/8")
5	172-852	2	Cross and Bearing Kit
6	172-303	1	Center Housing
7	172-304	1	Bell Extension with Nylon Centralizer
8	172-846	1	Yoke and Shaft Assembly
9	170-220	2	Nylon Repair Kit
10	171-550	1	Safety Decal
11	172-848	1	Outer Guard
12	172-989	1	Inner Joint and Tube Half with Guard
13	172-847	1	Inner Guard
14	171-799	1	Safety Decal
15	172-845	1	Yoke Tube and Slip Sleeve
16	170-776	1	Cross and Bearing Kit
17	172-924	1	Ball Shear Assembly
18	170-028	1	5/16" - 18 Locknut
19	172-987	1	5/16" -18 x 2" Bolt (Grade 5)
20	171-544	1	Safety Slide Lock Repair Kit

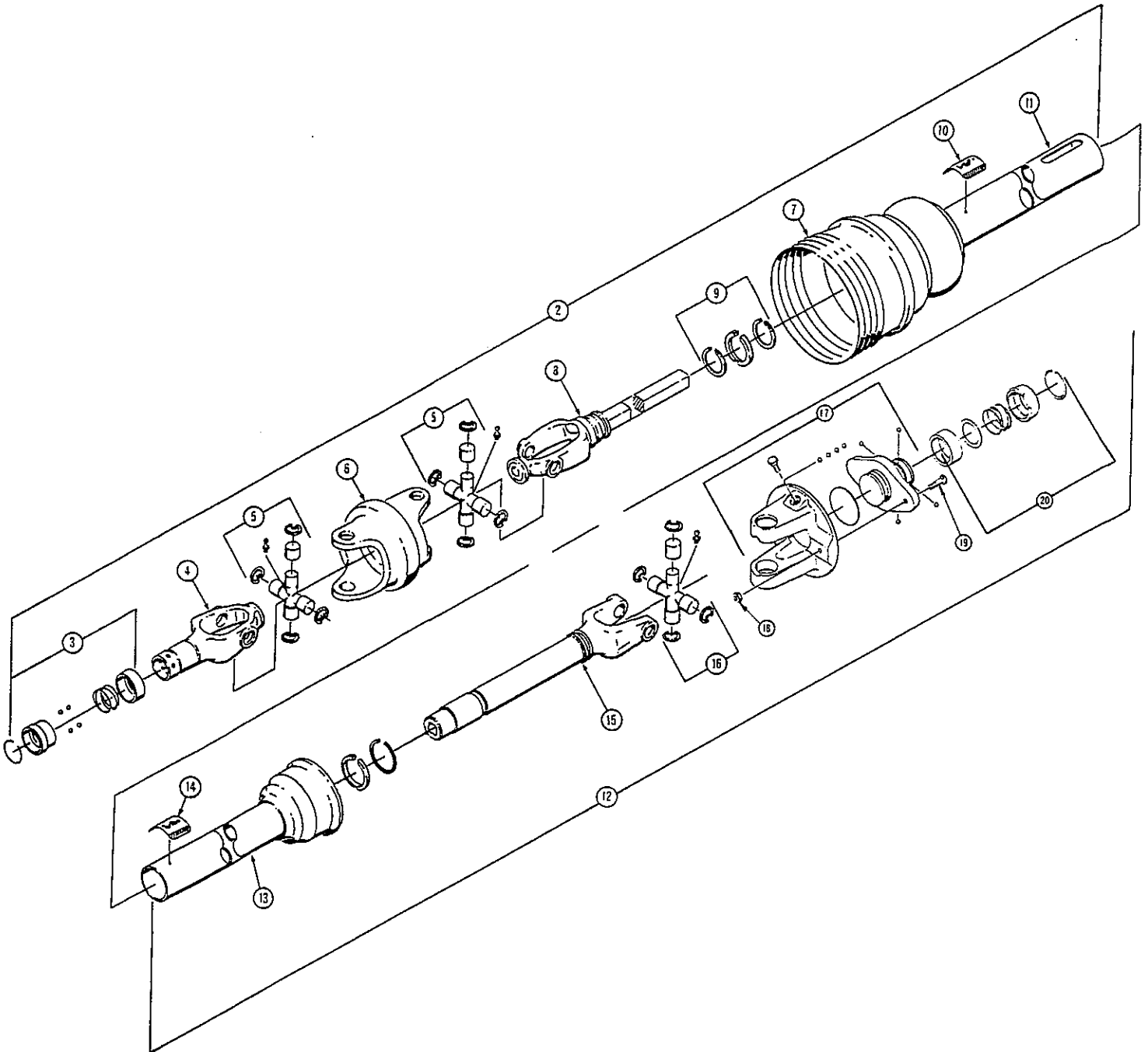
An asterisk (*) at the end of a part number (XXX-XXX*) indicates that the part is no longer used in production for this application.

Superscript letters (XXX-XXX^A) refer to footnotes and/or illustration boxes.

PTO DRIVELINE & FRICTION CLUTCH

3575/3700-TOW

**(1000 RPM - 20 SPLINE) Weasler Constant Velocity PTO
(1-3/4" YOKE)**



KNIGHT MANUFACTURING CORP. PO BOX 167 BRODHEAD, WI 53520
OFFICE: (608) 897-2131 PARTS/SERVICE: (608) 897-2125 FAX: (608) 897-2561

PTO DRIVELINE & FRICTION CLUTCH

3575/3700-TOW

**(1000 RPM - 20 SPLINE) Weasler Constant Velocity PTO
(1-3/4" YOKE)**

REF	PART NO	QTY	DESCRIPTION
1	172-922	1	80° CV- PTO Assembly (<i>Shear bolt type</i>)
2	172-841	1	Outer Joint and Tube Half with Guard
3	172-496	1	Safety Slide Lock Repair Kit
4	172-851	1	Safety Slide Lock Yoke Assembly (1-3/4")
5	172-852	2	Cross and Bearing Kit
6	172-303	1	Center Housing
7	172-304	1	Bell Extension with Nylon Centralizer
8	172-915	1	Yoke and Shaft Assembly
9	170-220	2	Nylon Repair Kit
10	171-550	1	Safety Decal
11	172-916	1	Outer Guard
12	172-907	1	Inner Joint and Tube Half with Guard
13	172-994	1	Inner Guard
14	171-799	1	Safety Decal
15	172-993	1	Yoke Tube and Slip Sleeve
16	170-776	1	Cross and Bearing Kit
17	172-925	1	Ball Shear Assembly
18	170-069	1	1/4" - 20 Locknut
19	172-986	1	1/4" - 20 x 2" Bolt (Grade 5)
20	171-544	1	Safety Slide Lock Repair Kit

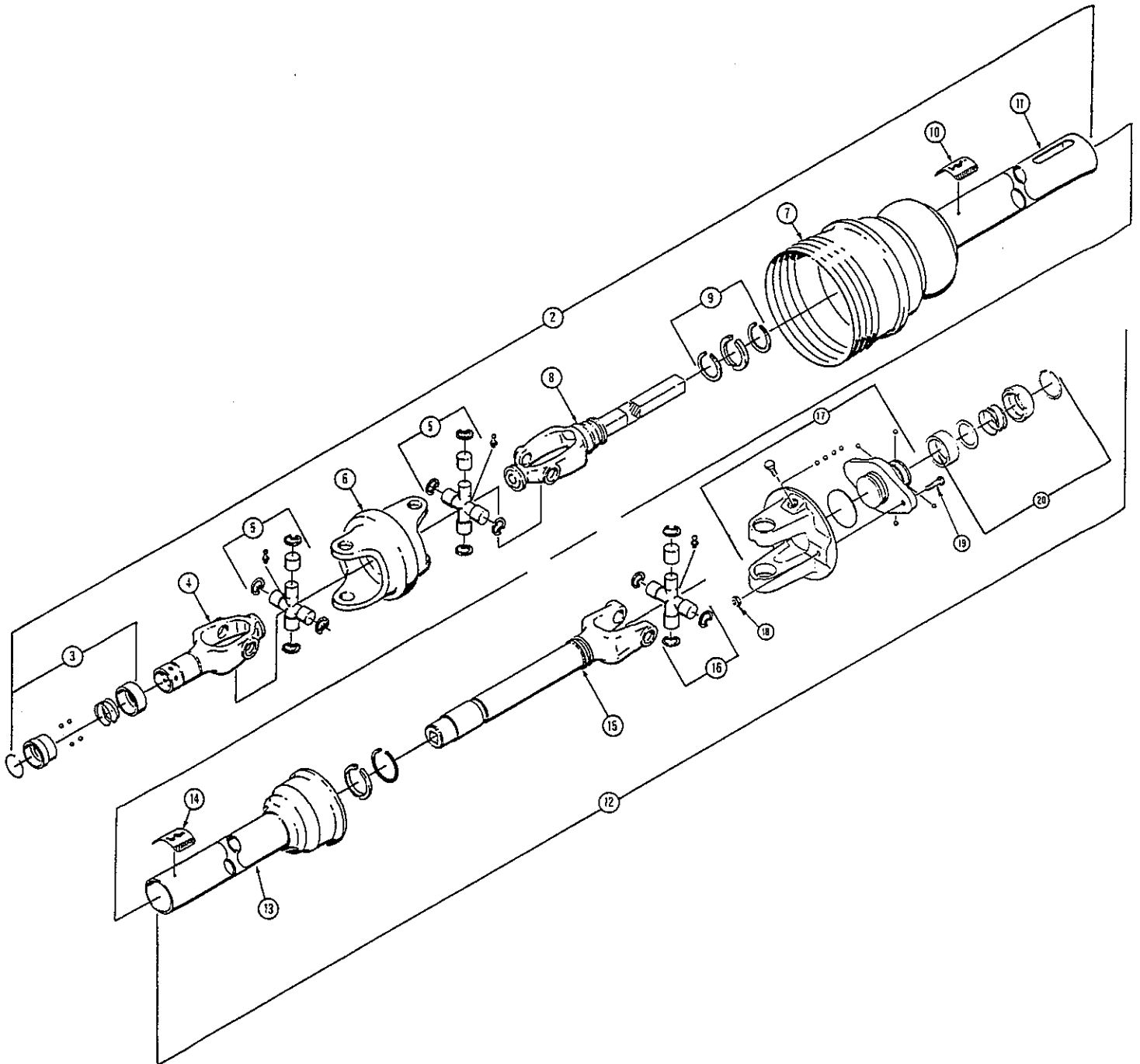
An asterisk (*) at the end of a part number (XXX-XXX*) indicates that the part is no longer used in production for this application.

Superscript letters (XXX-XXX^A) refer to footnotes and/or illustration boxes.

PTO DRIVELINE & FRICTION CLUTCH

3575/3700-TOW

**(1000 RPM - 21 SPLINE) Weasler Constant Velocity PTO
(1-3/8" YOKE)**



KNIGHT MANUFACTURING CORP. PO BOX 167 BRODHEAD, WI 53520
OFFICE: (608) 897-2131 PARTS/SERVICE: (608) 897-2125 FAX: (608) 897-2561

PTO DRIVELINE & FRICTION CLUTCH

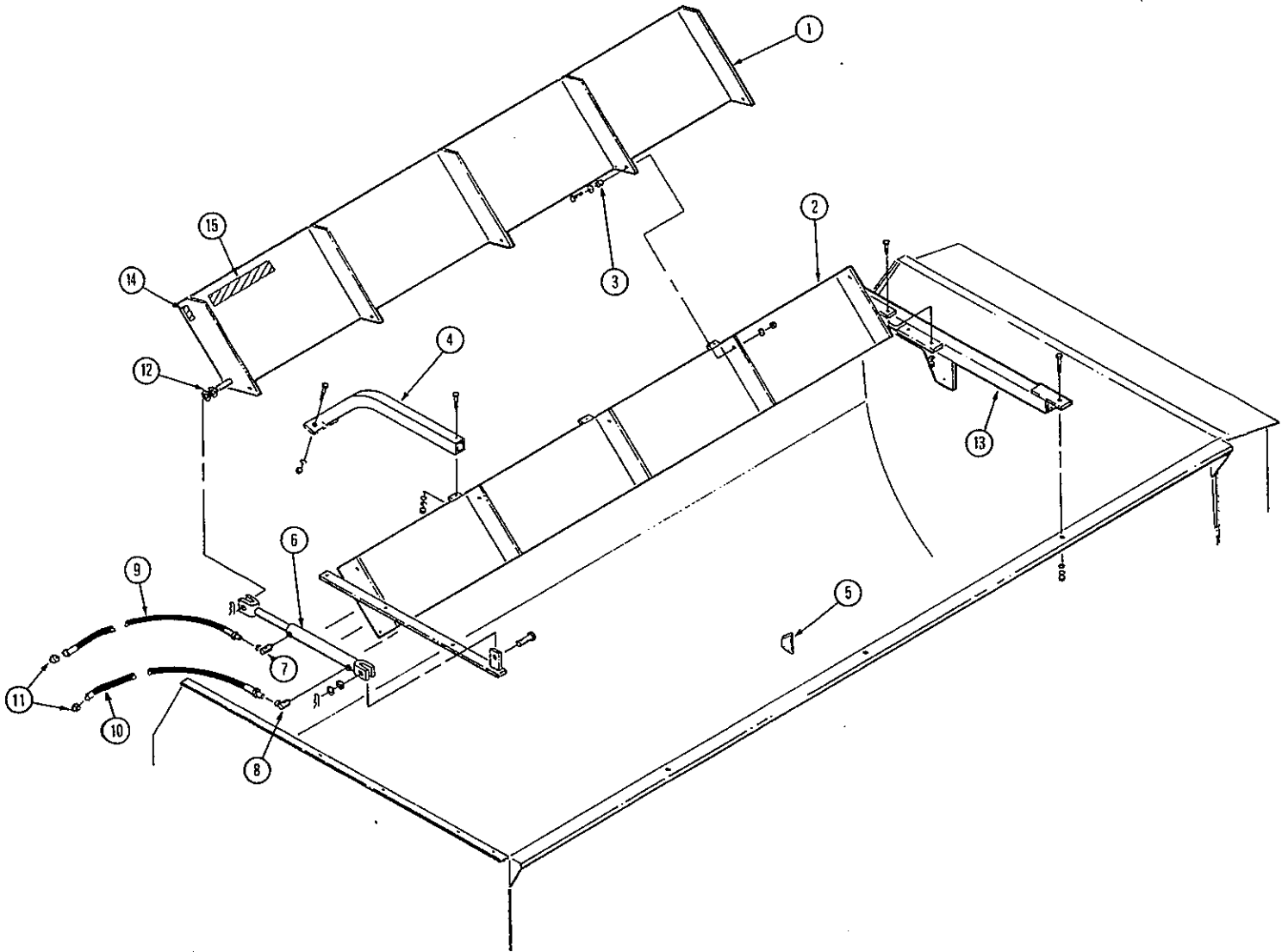
3575/3700-TOW

**(1000 RPM - 21 SPLINE) Weasler Constant Velocity PTO
(1-3/8" YOKE)**

REF	PART NO	QTY	DESCRIPTION
1	172-921	1	80° CV- PTO Assembly (<i>Shear bolt type</i>)
2	172-843	1	Outer Joint and Tube Half with Guard
3	171-544	1	Safety Slide Lock Repair Kit
4	172-992	1	Slide Lock Yoke Assembly (<i>1-3/8'</i>)
5	172-852	2	Cross and Bearing Kit
6	172-303	1	Center Housing
7	172-304	1	Bell Extension with Nylon Centralizer
8	172-846	1	Yoke and Shaft Assembly
9	170-220	2	Nylon Repair Kit
10	171-550	1	Safety Decal
11	172-848	1	Outer Guard
12	172-990	1	Inner Joint and Tube Half with Guard
13	172-847	1	Inner Guard
14	171-799	1	Safety Decal
15	172-845	1	Yoke Tube and Slip Sleeve
16	170-776	1	Cross and Bearing Kit
17	172-925	1	Ball Shear Assembly
18	172-986	1	1/4" - 20 x 2" Bolt (Grade 5)
19	170-069	1	1/4" - 20 Locknut
20	171-544	1	Safety Slide Lock Repair Kit

An asterisk (*) at the end of a part number (XXX-XXX*) indicates that the part is no longer used in production for this application.

Superscript letters (XXX-XXX^A) refer to footnotes and/or illustration boxes.



KNIGHT MANUFACTURING CORP. PO BOX 167 BROADHEAD, WI 53520
OFFICE: (608) 897-2131 PARTS/SERVICE: (608) 897-2125 FAX: (608) 897-2561

HAY- MAX KIT PARTS

3575/3700-TOW R070996

REF	PART NO	QTY	DESCRIPTION
1	102-342	1	Upper Pan Assembly
2	102-341	1	Lower Pan Assembly
3	134-771	5	Pivot Bushing
4	102-343	3	Bucket Guard (3575 only)
	102-343	2	Bucket Guard (3700 only)
5	133-835	40	Upper Auger Knife (3700 only) <i>(Number listed is additional quantity needed)</i>
	133-835	34	Upper Auger Knife (3575 only) <i>(Number listed is additional quantity needed)</i>
6	172-441	1	Hydraulic Cylinder; 2" x 10" stroke
7	171-030	1	90° Swivel Adapter; 3/8"
8	171-723	1	90° Swivel Restrictor; 3/8"
9	170-468	1	Hydraulic Hose; 1/4" x 162"
10	170-471	1	Hydraulic Hose; 1/4" x 170"
11	170-235	2	Reducer Fitting; 1/2" to 3/8"
12	170-122	AIR	Spacer Washer, 1" SAE Flat
13	102-344	1	Bucket Guard / Hay-Max Mount (3700 only)
14	172-449	1	Decal; Patent Information
15	172-448	1	Decal; "Hay-Max"

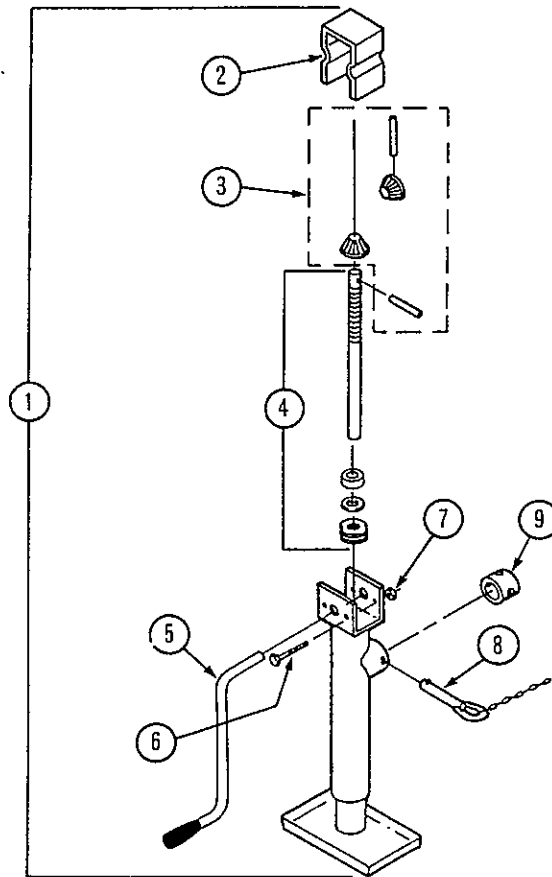
An asterisk (*) at the end of a part number (XXX-XXX*) indicates that the part is no longer used in production for this application.

Superscript letters (XXX-XXX^A) refer to footnotes and/or illustration boxes.

JACKSTAND

3575/3700-TOW

REF	PART NO	QTY	DESCRIPTION
1	171-610	1	Jackstand Assy
2	171-814	1	Cover
3	171-614	1	Gear Kit
4	171-611	1	Screw, Nut, Bearing & Washer Assy
5	171-612	1	Crank Assy
6	170-509	1	Carriage Bolt; 1/4" x 3"
7	170-125	2	1/4" Nut
8	171-613	1	Pull Pin
9	171-615	1	Mount Tube Assy

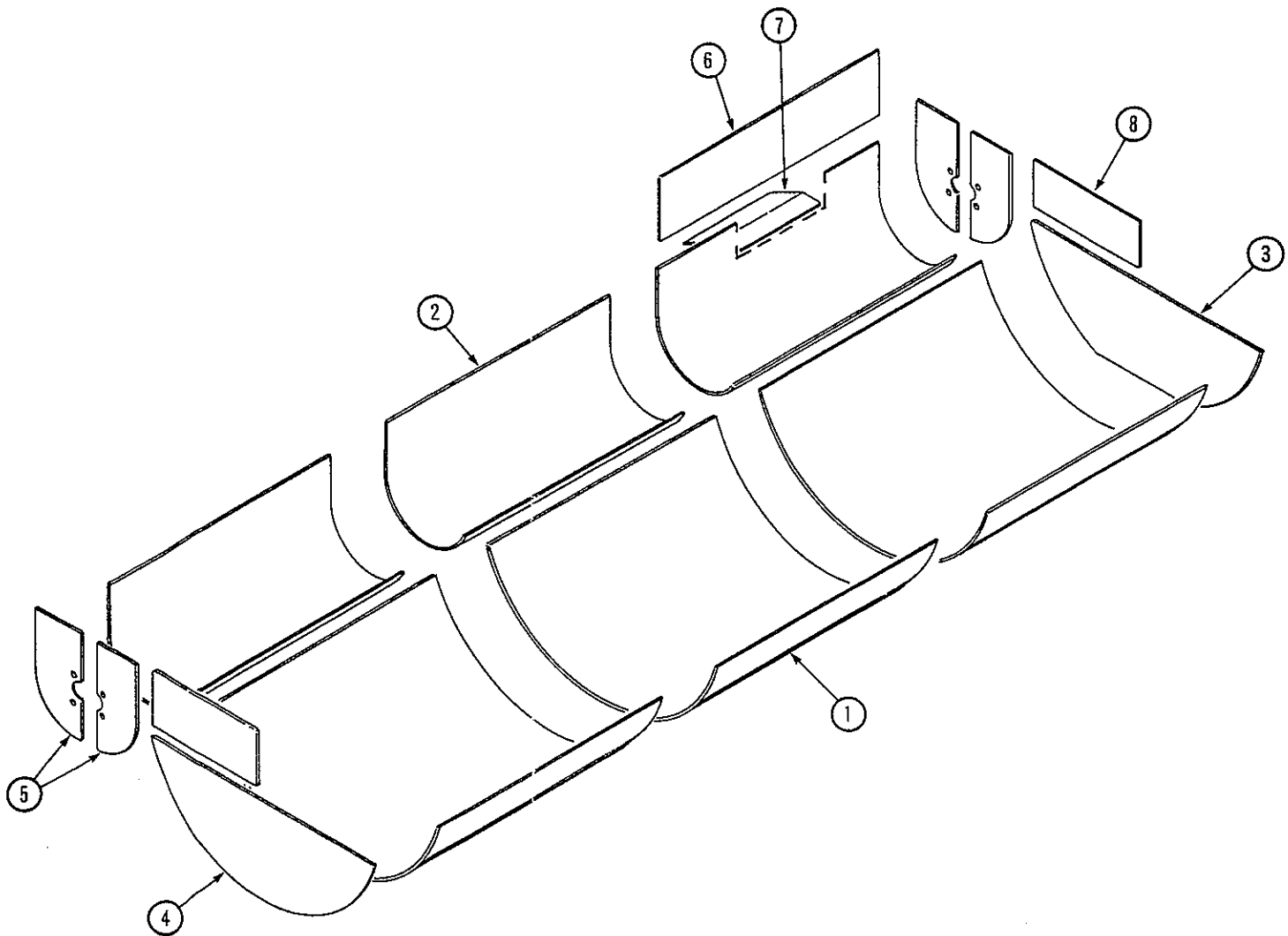


KNIGHT MANUFACTURING CORP. PO BOX 167 BROADHEAD, WI 53520
OFFICE: (608) 897-2131 PARTS/SERVICE: (608) 897-2125 FAX: (608) 897-2561

LINER PARTS

3575/3700-TOW

REF	PART NO	Hot Rolled Steel	QTY	DESCRIPTION
1	136-030	Stainless Steel	3	Reel Liner <i>(3575 only)</i>
	136-038	Stainless Steel	3	Reel Liner <i>(3700 only)</i>
2	136-031	Hot Rolled Steel	3	Auger Liner <i>(3575 only)</i>
	136-039	Hot Rolled Steel	3	Auger Liner <i>(3700 only)</i>
3	136-036		1	Reel End Panel <i>(front)</i>
4	136-037		1	Reel End Panel <i>(rear)</i>
5	136-035		2	Auger End Liner <i>(front and rear / includes both left and right halves)</i>
6	136-033		1	Upper Door Liner
7	136-032		1	Door Opening Liner
8	136-034		2	Upper Reel End Liner



An asterisk (*) at the end of a part number (XXX-XXX*) indicates that the part is no longer used in production for this application.

Superscript letters (XXX-XXX^A) refer to footnotes and/or illustration boxes.

DECAL AND PAINT LIST

3575/3700-TOW

PART NO	QTY	DESCRIPTION
170-154	1	"KNIGHT"
170-155	1	Knight head
170-849	3	Warning, Stay clear of power driven parts
170-893	1	Slow moving vehicle
171-712	1	Notice, retighten setscrews
171-748	1	Open / Closed (Door position indicator)
171-820	4	Danger, rotating augers inside
171-905	2	"REEL AUGGIE"
171-911	1	Safety instructions, read and understand
171-913	1	Caution, driveline information
171-914	2	Warning, stay clear of chute area
171-915	2	Danger, shield missing
171-947	4	Danger, do not hand operate
171-948	1	Beware, loading with bucket loader
171-949	1	U.S. Patent numbers
171-991	1	Amber reflector
171-992	3	Red reflector
172-292	1	Notice, do not overfill
172-786	1	Danger, Driveline, keep away
172-820	1	Warning, lifting instructions
172-883	1	Oil level plug
173-018	2	"3700" <i>(3700 units only)</i>
173-017	2	"3575" <i>(3575 units only)</i>
173-040	1	Caution, driveline information
173-041	1	Shearbolt clutch adjustment
173-078	1	Danger, shield missing
173-044	1	"Made in Wisconsin"

Paint:

170-367	Knight Red, Aerosol Can
170-814	Knight Red, Quart Can
170-815	Knight Red, Gallon Can
170-366	Knight Yellow, Aerosol Can
170-812	Knight Yellow, Quart Can
170-813	Knight Yellow, Gallon Can

KNIGHT MANUFACTURING CORP. PO BOX 167 BRODHEAD, WI 53520
OFFICE: (608) 897-2131 PARTS/SERVICE: (608) 897-2125 FAX: (608) 897-2561

Safety Chain for Towed Equipment P/N 173-077

This chain is designed to retain the connection between towing and towed machines, in the event of separation of the primary attaching system. It should be utilized whenever the unit is on the highway.

Light Kit For Towed Equipment

This light kit is designed for lighting and marking of agricultural field equipment whenever the equipment is on a highway. This kit is pre-assembled, and it includes mounting hardware.

PART NO	QTY	DESCRIPTION
300-007	1	Complete Light Kit - Assembled
172-173	2	Red And Amber Light Assembly
172-174	25'	4 Conductor Wire
172-175	1	4 Pin In-Line Connector (Male & Female)

Option:

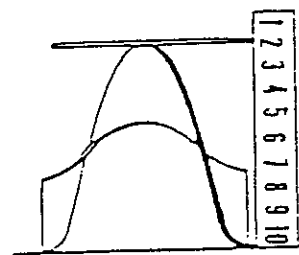
172-1101 7 Pin Female Connector

An asterisk (*) at the end of a part number (XXX-XXX*) indicates that the part is no longer used in production for this application.
Superscript letters (XXX-XXX^A) refer to footnotes and/or illustration boxes.

FLIGHTING TERMS AND DIMENSIONS

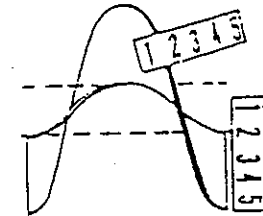
3575/3700-TOW

OUTSIDE DIAMETER: Outside diameter can be determined by laying the flight on a flat surface and measuring from the top to the base. NOTE: Dimensions may vary slightly.

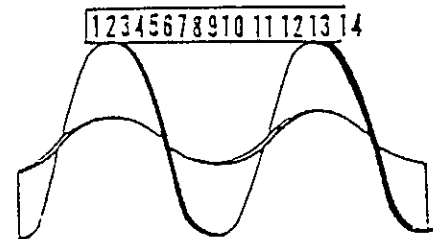


THICKNESS: Thickness of flighting can be determined with any linear measuring instrument.

INSIDE DIAMETER: To find the inside diameter of flight, measure the distance from the inside of the flight to the peak. Then multiply the dimension by two and subtract the answer from the outside diameter dimension.



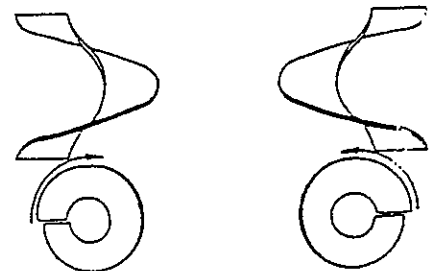
PITCH: Pitch is the dimension from one peak to the next, measured along the axis of the shaft. The term full pitch means that the outside diameter and the pitch are the same.



RIGHT HAND AND LEFT HAND FLIGHTING: As you look at the face of flighting and it is slanting downward to the right; it is right hand and if it is slanting downward to the left; it is left hand.

Flighting dimensions are written in a series similar to the following:

1/4" - 4" - 14" - 14"
Thick - I.D. - O.D. - Pitch



KNIGHT MANUFACTURING CORP. PO BOX 167 BRODHEAD, WI 53520
OFFICE: (608) 897-2131 PARTS/SERVICE: (608) 897-2125 FAX: (608) 897-2561

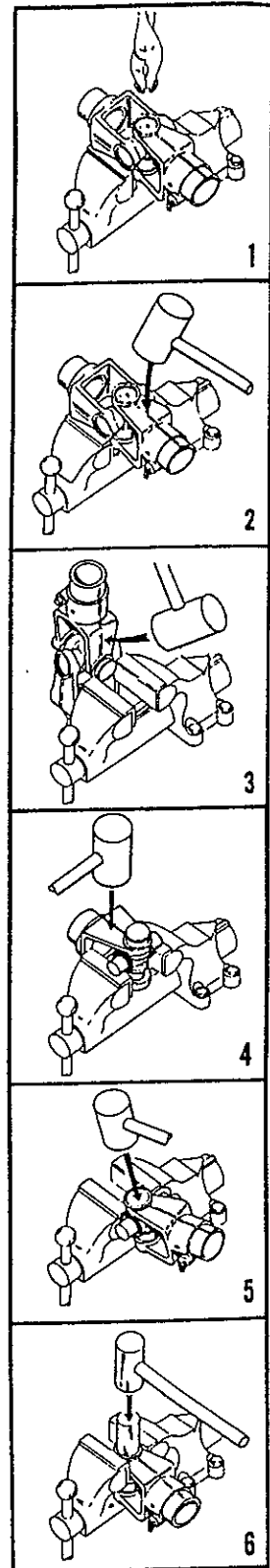
DISASSEMBLY PROCEDURE:

1. Remove the four snap rings as shown in Figure #1.
2. Position the joint in an open vise, with each ear of one yoke supported by a vise jaw. Figure #2
3. With a soft hammer or mallet, strike the top ear of the unsupported yoke as indicated by the arrow in Figure #2. This will drive the top bushing outward approximately 3/8 of an inch.
4. Grip the loosened bushing in the vise as shown in Fig. #3. Drive the yoke off the bushing by striking the yoke ear with a mallet in the direction of the arrow. (Fig. #3)
5. This same procedure should be followed to remove the bushing that is directly opposite the one in Step 4. After this, the yoke itself may be removed.
6. To remove the remaining two bushings, support the cross as shown in Figure #4. Make certain that the vise jaws are covered with brass protectors. By striking the yoke ear as indicated by the arrow in Figure #4, the remaining bushings can be removed by repeating the procedure called for in Step 4 & Figure #3.

ASSEMBLY PROCEDURE:

DURING REASSEMBLY, BE SURE THAT THERE IS NO DIRT ON THE TRUNNIONS OF THE CROSS OR IN THE BUSHINGS!

1. Start one bushing in the yoke ear and position the center cross through the yoke. Drive the first bushing down flush with the outside surface of the ear as shown in Fig. #5. Support the underside of the ear so as not to spring the yoke.
2. Clamp the ear in the vise as shown in Figure #6. Use a punch of the same diameter as the bushing, drive the bushing past the snap ring groove, and insert a snap ring.
3. Position the cross and drive in the opposite bushing as described in Steps 1 & 2, and Insert a snap ring.
4. Assemble the second yoke in the same manner.
5. To insure proper seating, and to eliminate any possible tightness, strike the forged surfaces of the yoke ears with a mallet. This will insure a free flexing joint.
6. Lubricate with a good grade of multipurpose grease.



An asterisk (*) at the end of a part number (XXX-XXX*) indicates that the part is no longer used in production for this application.

Superscript letters (XXX-XXX^A) refer to footnotes and/or illustration boxes.

HARDWARE PART NUMBER LISTING

All hex head bolts are grade 5 unless otherwise specified. All fasteners are UNC thread unless otherwise specified.

HEX NUTS AND WASHERS

SIZE	Hex Nuts	Lock Nuts	Jam Nuts	Flat Washer	Lock Washer
#6-32	172-418				172-417
#10-32	171-606			171-525	171-605
1/4"	170-125	170-069		170-301	170-124
5/16"	170-119	170-028		170-127	170-118
3/8"	170-007	170-047	170-022	170-244	170-006
7/16"	170-062	170-239	170-046	170-138	170-061
1/2"	170-004	170-042	170-036	170-040	170-003
5/8"	170-011	170-031	170-037	170-066	170-010
3/4"	170-017	170-185	170-035	170-015	170-016
7/8"	171-776	171-093 UNF		170-131	172-003
1"	173-022			170-122	171-021
1-1/4"	170-130 UNF			170-928	

HEX HEAD BOLTS

Bolt Size	Part No				
1/4 x 3/4	170-803	3/8 x 3-1/2	170-292	5/8 x 1	171-087
1/4 x 7/8	171-094	3/8 x 4	170-877	5/8 x 1-1/4	171-366
1/4 x 1	170-310	3/8 x 4-1/2	170-519	5/8 x 1-1/2	170-153
1/4 x 1-1/2	170-068	3/8 x 5	170-493	5/8 x 1-3/4 Full thread	170-030
1/4 x 2	172-986	3/8 x 5-1/2 Full thread	170-593	5/8 x 2	170-009
1/4 x 3	171-403	3/8 x 6-1/2	171-291	5/8 x 2 Full thread	171-772
1/4 x 3-1/2	173-640			5/8 x 2-1/4	173-009
1/4 x 4	173-505	7/16 x 1	170-032	5/8 x 2-1/2 Full thread	170-129
		7/16 x 1-1/4	170-354	5/8 x 2-1/2	172-381
5/16 x 3/4	170-262	7/16 x 2	170-356	5/8 x 2-3/4	172-356
5/16 x 1	170-027			5/8 x 3	170-258
5/16 x 1-1/4	170-188	1/2 x 3/4	171-252	5/8 x 3-1/2	170-038
5/16 x 1-3/4	170-263	1/2 x 1	170-149	5/8 x 4-1/2	170-067
5/16 x 2	172-987	1/2 x 1-1/4	170-373	5/8 x 5-1/2	172-421
5/16 x 2-1/2	170-369	1/2 x 1-1/2	170-002	5/8 x 7	173-019
5/16 x 3	170-295	1/2 x 1-1/2 (Gr 8)	172-951	5/8 x 9-1/2	171-039
5/16 x 5 (Gr 8)	172-983	1/2 x 1-3/4	171-774		
5/16 x 5-1/2 (Gr 8)	172-952	1/2 x 2	171-802	3/4 x 2	170-058
		1/2 x 2-1/4	172-387	3/4 x 2 Full thread	171-768
3/8 x 3/4	170-439	1/2 x 2-1/2	170-885	3/4 x 2 (Grade 8)	171-877
3/8 x 7/8	170-268	1/2 x 2-3/4	172-007	3/4 x 2-1/4	171-275
3/8 x 7/8 (soc. hd. capscrew)		1/2 x 3	170-168	3/4 x 2-1/2	170-374
.....	172-044	1/2 x 3-1/2 (Gr 8)	172-950	3/4 x 3	170-014
3/8 x 1	170-054	1/2 x 4 Full thread	171-509	3/4 x 3-1/2	170-195
3/8 x 1-1/4	170-005	1/2 x 4-1/2 (Gr. 8)	171-573	3/4 x 3-1/2 (Grade 8)	171-899
3/8 x 1-1/2	170-368	1/2 x 5	171-412	3/4 x 4 (Gr 8) UNF	173-579
3/8 x 2	170-245	1/2 x 5-1/2	173-506	3/4 x 4-1/2	173-039
3/8 x 2-1/4	170-320	1/2 x 6-1/2	173-711	3/4 x 4-1/2 (Gr 8) UNF	173-588
3/8 x 2-1/2	170-257			3/4 x 8	173-509
3/8 x 2-1/2 (Full thread)	170-128	9/16 x 1	173-699		
3/8 x 3	170-380	9/16 x 1-1/2	173-701	7/8 x 2-1/4	172-892
				7/8 x 4 UNF	171-092

KNIGHT MANUFACTURING CORP. PO BOX 167 BROADHEAD, WI 53520
 OFFICE: (608) 897-2131 PARTS/SERVICE: (608) 897-2125 FAX: (608) 897-2561

HARDWARE PART NUMBER LISTING

7/8 x 3	172-002	1/2 x 1-1/4 (half dog point)	171-085
7/8 x 3-1/2	173-020		
7/8 x 8 (Gr 8) UNF	173-515		
		ROLLER CHAIN	
		CONNECTOR LINKS	
1 x 3-1/2	173-021	<u>Size</u>	<u>Part No</u>
1 x 8 (Gr 8) UNF	173-713	#50-2R	170-094
TRUSS HEAD BOLTS		#50	170-088
#6-32 x 3/4	172-416	#60-2R	170-095
#6-32 x 1	173-079	#60	170-089
#8-32 x 1-1/2	171-210	#60H	171-102
#10-32 x 3/4	171-604	#80	170-090
		#80H	170-821
1/4 x 1/2	170-123	#100	170-091
1/4 x 3/4	170-193	#100H	171-969
1/4 x 1	170-194	#120	170-092
5/16 x 1 (Grade 5)	170-117	#140	170-093
		#160	170-888
CARRIAGE BOLTS		OFFSET LINKS	
1/4 x 2-1/2	171-394	#50	170-096
1/4 x 3	170-509	#50-Double roller	170-102
		#60-Double roller	170-103
5/16 x 2-1/2	171-395	#60	170-097
3/8 x 3-1/2	171-283	#80	170-098
3/8 x 4-1/2	170-191	#80H	170-820
3/8 x 5	170-495	#100	170-099
3/8 x 6-1/2	171-174	#120	170-100
		#140	170-101
1/2 x 6-1/2	171-098	#160	170-887
1/2 x 9	171-255		
ZERKS		ROLLER LINKS	
1/4-28	170-023	#50	171-415
1/4-28 - 45	170-148	#60	171-416
1/4-28 - 90	170-049	#80	171-417
1/4 NPT	170-277	#80H	170-795
		#100	171-418
1/8 NPT	170-865	#100H	172-146
		#120	171-419
COTTER PINS		#140	171-420
1/16 x 1/2	170-992	#160	172-421
3/32 x 3/4	170-364		
1/8 x 1	170-045		
1/8 x 1-1/2	170-382		
5/32 x 1-1/2	170-236		
5/32 x 3	170-135		
3/16 x 1-1/4	170-991		
3/16 x 2	170-115		
1/4 x 1-1/2	170-521		
1/4 x 2	170-056		
SET SCREWS			
5/16 x 5/16	170-248		
5/16 x 1/2	170-254		
3/8 x 3/8	170-151		
3/8 x 3/4 (sq hd drilled)	170-290		
1/2 x 5/8	170-249		

An asterisk (*) at the end of a part number (XXX-XXX*) indicates that the part is no longer used in production for this application.

Superscript letters (XXX-XXX^A) refer to footnotes and/or illustration boxes.

PART NUMBER INDEX

3575/3700-TOW

101-227	22	134-409	29	170-006	25	170-115	23,45
101-231	22	134-447	7	170-006	44	170-115	21
101-736	23	134-471	7	170-007	44	170-117	45
101-738	23	134-771	37	170-008	5	170-118	23,44
101-739	23	135-691	25	170-009	44	170-119	44
101-817	7	135-697	5	170-010	44	170-12219,23,37,44	
101-835	29	135-859	19	170-011	44	170-123	45
101-916	27	135-917	25	170-014	45	170-124	44
101-917	29	135-918	25	170-015	25,44	170-125	38,44
102-296	19	135-936	3	170-016	44	170-127	44
102-298	21	135-946	7	170-017	44	170-128	44
102-299	19	135-947	15,17	170-021	45	170-129	44
102-306	25	135-949	3	170-022	44	170-131	44
102-307	25	135-958	13	170-023	45	170-135	23,45
102-308	5	135-959	13	170-027	44	170-138	44
102-309	9	135-960	13	170-028	3,31,44	170-142	7
102-310	9	135-962	17	170-030	44	170-147	45
102-311	17	135-967	15,17	170-031	19,44	170-148	45
102-312	15,17	135-967	15	170-032	21,44	170-149	44
102-313	15,17	135-968	13	170-033	45	170-151	45
102-314	17	135-969	15,17	170-035	44	170-153	44
102-315	15,17	135-970	15,17	170-036	44	170-154	40
102-317	13	135-971	15,17	170-037	44	170-155	40
102-318	13	135-972	15,17	170-038	44	170-161	23
102-319	13	135-973	15,17	170-040	44	170-167	44
102-320	13	135-976	15,17	170-042	44	170-168	44
102-321	13	135-980	21	170-045	45	170-177	45
102-322	3	135-981	21	170-046	44	170-185	44
102-323	7	135-983	15,17	170-047	44	170-188	44
102-325	25	135-984	15,17	170-049	45	170-191	45
102-326	25	135-985	5	170-050	44	170-193	45
102-328	21	135-992	7	170-053	3	170-194	45
102-329	9	135-993	7	170-054	44	170-195	45
102-330	5	135-994	7	170-056	45	170-215	45
102-331	5	136-000	7	170-058	44	170-220	31,33
102-333	25	136-001	7	170-059	44	170-220	35
102-336	13	136-002	5	170-061	44	170-235	21,23,37
102-337	15	136-003	5	170-062	44	170-236	45
102-338	15	136-004	7	170-065	44	170-238	27,29
102-339	13	136-005	5	170-066	44	170-239	44
102-340	13	136-010	3	170-067	44	170-244	11,44
102-341	37	136-011	7	170-068	44	170-245	44
102-342	37	136-012	3	170-069	44	170-247	45
102-343	37	136-030	39	170-069	3,33	170-248	45
102-344	37	136-031	39	170-073	19,21	170-249	45
102-345	22	136-032	39	170-074	19,21,23	170-250	45
102-346	23	136-033	39	170-075	23	170-251	45
102-347	23	136-034	39	170-088	45	170-254	23,45
132-701	23	136-035	39	170-089	45	170-256	44
133-378	27	136-036	39	170-090	45	170-257	44
133-445	19	136-037	39	170-091	45	170-258	44
133-835	15,17,37	136-038	39	170-092	45	170-262	23,44
133-920	3	136-039	39	170-093	45	170-263	44
133-942	23	136-057	15	170-094	45	170-265	44
133-943	23	136-062	3	170-095	45	170-268	44
133-952	23	136-065	13	170-096	45	170-270	44
133-978	19	136-067	5	170-097	45	170-277	45
134-086	5	136-068	5	170-098	45	170-288	45
134-155	5	136-076	3	170-099	45	170-289	45
134-352	15,17	136-135	23	170-100	45	170-290	45
134-389	23	170-002	44	170-101	45	170-292	44
134-390	23	170-003	44	170-102	45	170-293	44
134-394	23	170-004	44	170-103	45	170-294	44
134-395	22	170-005	44	170-110	23	170-295	44

KNIGHT MANUFACTURING CORP. PO BOX 167 BROADHEAD, WI 53520
 OFFICE: (608) 897-2131 PARTS/SERVICE: (608) 897-2125 FAX: (608) 897-2561

PART NUMBER INDEX

3575/3700-TOW

170-296	45	170-846	45	171-469	45	172-140	29
170-297	45	170-849	40	171-509	44	172-141	29
170-299	45	170-856	45	171-525	44	172-142	29
170-300	45	170-857	45	171-544	31,33,35	172-143	29
170-301	44	170-859	23	171-550	31,33,35	172-146	45
170-302	23	170-864	45	171-573	44	172-165	29
170-310	44	170-865	3,11,22,45	171-576	23	172-166	29
170-311	45	170-866	45	171-604	45	172-173	41
170-319	44	170-877	44	171-605	44	172-174	41
170-320	44	170-885	44	171-606	44	172-175	41
170-347	44	170-887	45	171-607	5	172-195	41
170-354	44	170-888	45	171-610	25,38	172-288	3
170-355	45	170-893	40	171-611	38	172-289	7
170-356	44	170-920	25	171-612	38	172-292	40
170-364	45	170-941	19,21	171-613	38	172-303	31,33,35
170-366	40	170-947	21	171-614	38	172-304	31,33,35
170-367	40	170-991	45	171-615	38	172-312	25
170-368	44	170-992	45	171-639	44	172-313	25
170-369	44	170-993	45	171-666	23	172-329	27
170-370	45	171-021	44	171-668	23	172-331	27
170-371	44	171-030	19,21,23,37	171-695	7	172-333	27
170-372	44	171-039	44	171-712	40	172-335	27
170-373	44	171-045	5	171-723	37	172-336	27
170-374	45	171-085	45	171-748	40	172-337	27
170-375	44	171-087	44	171-768	44	172-338	27
170-376	44	171-094	44	171-772	44	172-339	27
170-377	44	171-098	45	171-774	44	172-340	27
170-378	44	171-099	44	171-776	15,17	172-354	29
170-379	44	171-102	45	171-776	44	172-356	44
170-380	44	171-116	45	171-782	23	172-381	44
170-381	44	171-136	23	171-799	31,33,35	172-383	44
170-382	45	171-151	23	171-802	44	172-386	27,29
170-415	27,29	171-158	27,29	171-814	38	172-387	44
170-419	45	171-174	45	171-820	40	172-416	45
170-421	45	171-178	23	171-834	45	172-421	44,45
170-438	45	171-186	23	171-877	45	172-441	37
170-439	44	171-203	44	171-883	23	172-448	37
170-445	5	171-210	45	171-899	25,45	172-449	37
170-456	45	171-252	7,44	171-900	25	172-490	44
170-468	37	171-255	45	171-905	40	172-496	33
170-471	21,37	171-257	23	171-911	40	172-498	27
170-493	44	171-259	23	171-913	40	172-499	27
170-494	45	171-260	23	171-914	40	172-500	29
170-495	45	171-265	22	171-915	40	172-751	5
170-504	44	171-266	22	171-919	3,7	172-786	40
170-506	44	171-275	45	171-920	13	172-800	29
170-508	45	171-283	45	171-932	23	172-801	29
170-509	38,45	171-291	44	171-935	9	172-802	29
170-518	5	171-297	23	171-936	27,29	172-803	29
170-519	44	171-318	44	171-938	23	172-804	29
170-521	45	171-330	23	171-947	40	172-818	3
170-532	44	171-366	44	171-948	40	172-820	40
170-593	44	171-380	27,29	171-949	40	172-822	11
170-776	31,33,35	171-386	44	171-960	29	172-823	11
170-795	45	171-394	45	171-969	45	172-841	33
170-800	45	171-395	45	171-991	40	172-842	31
170-800	5	171-403	44	171-992	40	172-843	35
170-803	44	171-412	44	172-003	15,17,44	172-845	31,35
170-812	40	171-415	45	172-005	7,21	172-846	31,35
170-813	40	171-416	45	172-007	44	172-847	31,35
170-814	40	171-417	45	172-024	11	172-848	31,35
170-815	40	171-418	45	172-044	44	172-851	33
170-820	45	171-419	45	172-110	41	172-852	31,33,35
170-821	45	171-420	45	172-128	29	172-882	45
170-825	45	171-427	23	172-130	29	172-883	40
170-845	5	171-462	23	172-134	29	172-884	7

An asterisk (*) at the end of a part number (XXX-XXX*) indicates that the part is no longer used in production for this application.

Superscript letters (XXX-XXX^A) refer to footnotes and/or illustration boxes.

PART NUMBER INDEX

3575/3700-TOW

172-907 33
172-915 33
172-916 33
172-920 31
172-921 35
172-922 33
172-924 31
172-925 33,35
172-986 33,35
172-986 3
172-987 3,31
172-989 31
172-990 35
172-991 31
172-992 35
172-994 33
172-998 3
172-999 25
173-000 25
173-001 25
173-002 25
173-003 25
173-004 25
173-005 25
173-006 25
173-007 25
173-008 25
173-009 19
173-010 21,23
173-012 7
173-013 5
173-014 5
173-015 7
173-017 40
173-018 40
173-019 25
173-020 15,17
173-021 13
173-022 13
173-025 3
173-027 9
173-028 27,29
173-031 25
173-032 25
173-033 25
173-040 40
173-041 40
173-044 40
173-078 40
180-630 11
300-007 41

KNIGHT MANUFACTURING CORP. PO BOX 167 BROADHEAD, WI 53520
OFFICE: (608) 897-2131 PARTS/SERVICE: (608) 897-2125 FAX: (608) 897-2561