



KNIGHT

VERTICAL MAXX

5132, 5144, 5156, 5168 and 5168TE Trailer Type Parts Manual

Table of Contents

Abbreviations	2
Using This Service Parts Listing	3
Body Parts	4
Ladder Assy - 5156	6
Ladder Assy - 5168	7
Ladder Installation - 5156	8
Ladder Installation - 5168	9
Platform Assy 5156/5168/5168TE	10
Platform Installation 5156/5168TE	11
Platform Installation 5168	12
Jackstand Parts and Safety Chains	13
Light Kit Standard US	14
Light Kit Standard Export	14
Wheel Hub and Parts - 5132	15
Wheel Hub and Parts - 5144	16
Wheel Hub and Parts - 5156, 5168 and 5168TE	17
Drive - 5132 and 5144	18
Drive - 5156, 5168 and 5168TE	19
Front Door Parts	20
Rear Door Parts - Optional	21
Planetary Gearbox and Oil Reservoir	22
CamCline Actuator and Slides	23
CamCline Discharge Base	24
CamCline Adjustable Discharge Extension	26
CamCline Adjustable Discharge Extension Tip-Off	28
CamCline Flat Discharge Extension	29
Auger Assembly - 5132	30
Auger Assembly - 5144	31
Auger Assembly - 5156	32
Auger Assembly - 5168 and 5168 TE	33
Top Extension 5168TE	34
Driveline - 5132 and 5144 (Between Planetary Gearboxes)	35
Driveline - 5156, 5168 and 5168TE (Between Planetary and 2:1 Gearboxes)	36
PTO Driveline - 5132 and 5144 (540 RPM - 6 Spline - 1-3/8" Yoke)	37
PTO Driveline - 5156, 5168 and 5168TE (1000 RPM - 20 Spline - 1-3/4" Yoke)	38
PTO Driveline - 5156, 5168 and 5168TE (1000 RPM - 21 Spline - 1-3/8" Yoke)	39
Hay Retention - Optional	40
Hay Retention 5168TE - Optional	42
Stainless Steel Liners 5156, 5168 and 5168TE - Optional	43
Side Extension - Optional	44
2:1 Gearbox Parts	45
Decal and Paint List	46
Hardware Part Number Listing	47
Part Number Index	49

Catalog Part Number 6266US Unit Serial Number _____

Operator Instruction Manual for this unit: 006096

© 2010 Kuhn North America, Inc.

Abbreviations

Assy	Assembly
A/R	As Required
B	Bolt
Brg	Bearing
BSN	Before Serial Number
Btm	Bottom
C-Bolt	Carriage Bolt
Cttr	Cotter
CV	Constant Velocity
Deg	Degree
Dia	Diameter
ea	Each
eq or Equiv	Equivalent
Fln	Flanged Lock Nut
Fw	Flat Washer
Ga	Gauge
Gr or Grd	Grade
Hd	Head
Hfw	Heavy Flat Washer
Hyd	Hydraulic
ID	Inside Diameter
Ill or Illus	Illustration
Ind	Indicator
Jn	Jam Nut
Kw	Keyway
LH	Left Hand
Ln	Lock Nut
Lw	Lock Washer
Mtg Hrd	Mounting Hardware
NC	National Coarse
NF	National Fine
NLA	No Longer Available
NPT	National Pipe Thread
OD	Outside Diameter
Pc(s)	Piece(s)
PD	Pitch Diameter
PTO	Power Takeoff (shaft)
Qty	Quantity
RH	Right Hand
SN	Serial Number
SHCS	Socket Head Cap Screw
Spk, or Spkt or Sprkt	Sprocket
Sq	Square
SS	Stainless Steel
SSB	Stainless Steel Bolt
St	Straight
Std	Standard
STS	Self Tapping Screw
UASN	Used After Serial Number
UBSN	Used Before Serial Number
W	With
W/O	With Out

Using This Service Parts Listing

This listing uses a number indentation system to specify the parts of an assembly. Any number which is indented to the right, indicates that it is a component of the item to the upper left. Example:

Part no	Qty	Description
102-AAA	#	Assembly A
102-BBB	#	Sub-Assembly B
(Component of A)		
140-xxx	#	Sub-Component of B
140-xxx	#	Sub-Component of B
102-CCC	#	Sub-Assembly C
(Component of A)		
etc.		

Using this system, the subassemblies and their components are included if an **Assembly** is ordered. Similarly, the components of a subassemblies are included if a subassembly is ordered.

The quantity (Qty) associated with an assembly, represents the number of times an assembly could be shown in the drawing. The subassembly quantity however, is the number of times a subassembly is used to build one assembly. Similarly, the component quantity refers to the number of times a given component is found in one subassembly.

MODEL AND SERIAL NUMBER INFORMATION is located near the front left hand corner (Fig. A). The model number, serial number and part number should be known when asking service personnel for parts.

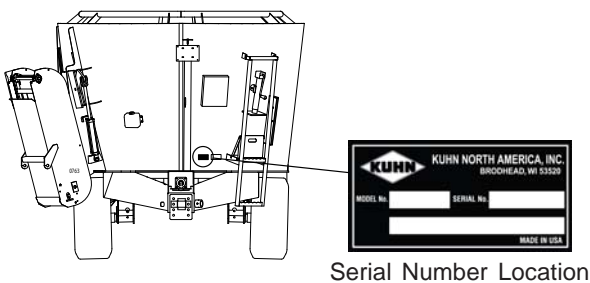


Fig. A

The serial number may consist of a number, or a number with a letter prefix. When referring to serial number breaks in the text of this manual, a serial number with a prefix will have been manufactured after a serial number without a prefix (A0001 made after 0123). Likewise, a higher prefix letter would indicate manufacture after a lower prefix letter (B0001 made after A0123). Therefore, if the text refers to units manufactured after serial number B0123, this would include "B" series numbers greater than 0123, and all numbers with a higher letter prefix.

If you cannot find the part you need, be as descriptive as possible when placing an order:

Sprockets: give the bore size, number of teeth, and size of keyway.

Roller chain: give the size of chain (stamped on the side of each link) and number of links.

Shafting: give the diameter, length, and quantity and size of keyways.

Hardware is generally not included with parts. If you need any hardware, check the size, the length, and the grade (Fig. B), then check the hardware list in this manual for the part numbers.

All hex head bolts are grade 5, and nuts are grade B unless otherwise stated.

The hardware listing also includes listings for zerks, cotter pins, set screws, and roller chain links.

The illustrations in this manual are meant to be used only as a guide for identifying parts and locating their relative positions.

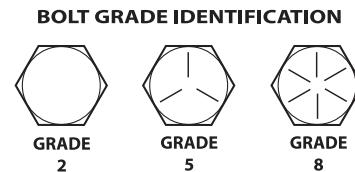
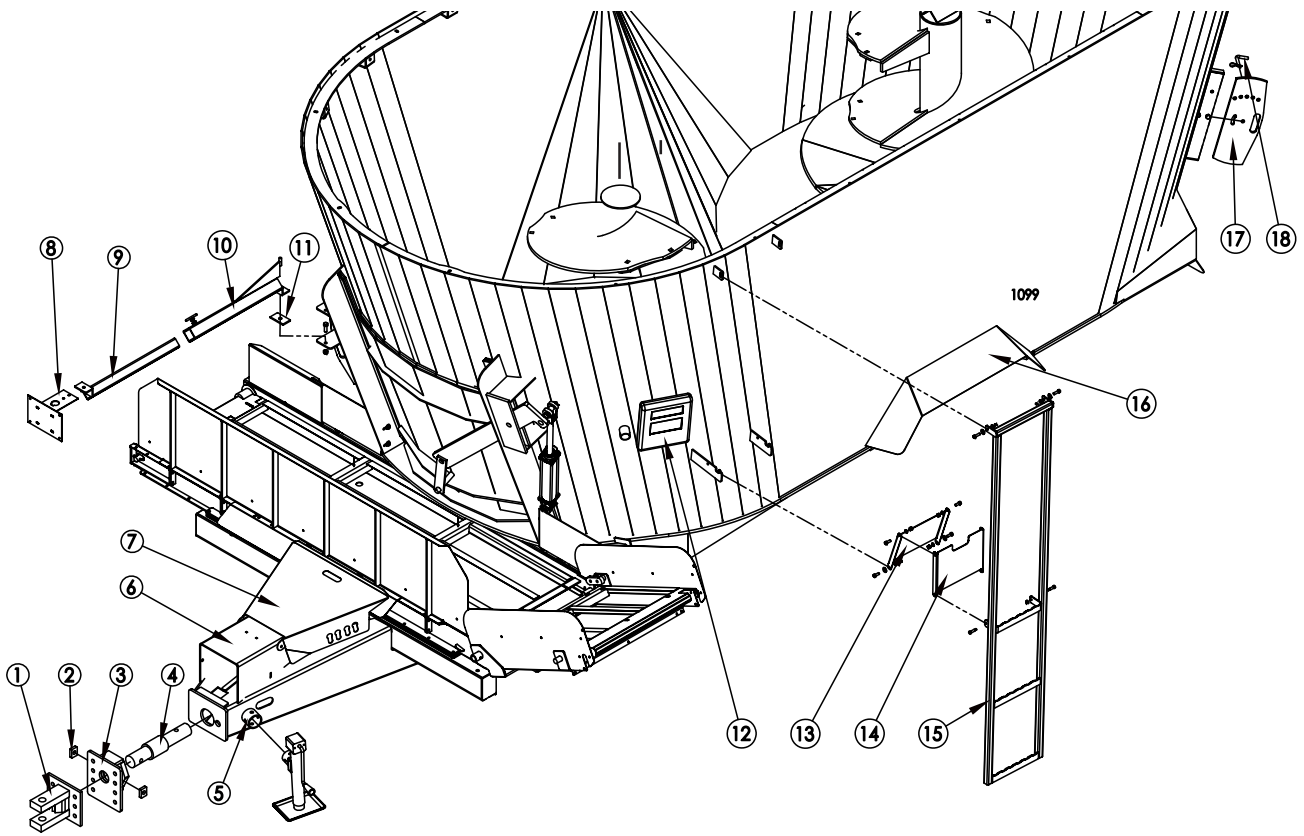


Fig. B

0072

Body Parts



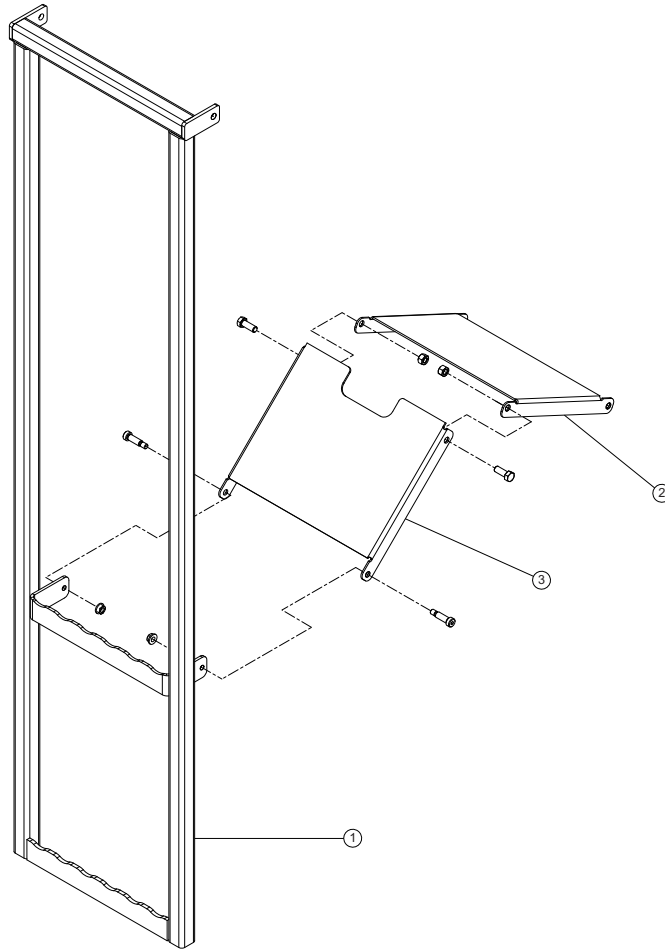
Body Parts

REF	PART NO	QTY	DESCRIPTION
1	101-741	1	Clevis Hitch (5132)
	103-779	1	Clevis Hitch (5144, 5156, 5168 and 5168TE)
2	140-611	2	Clevis Retainer
3	103-674	1	Clevis Mount
4	174-763	1	Weigh Bar, Hitch
5	171-615	1	Jack Mount (weld on)
6	143-546	1	Drive Shield (weld on) (5132 and 5144)
	143-932	1	Drive Shield (weld on) (5156, 5168 and 5168TE)
7	143-413	1	Drive Shield
8	101-835	1	Weigh Scale Indicator Mount
9	102-439	1	Swing Arm - Inner
10	102-437	1	Swing Arm - Outer
11	136-454	1	Spacer Pad
12	175-387	1	Operator's Manual Holder
13	142-894	1	Ladder Retainer - Inner
14	142-895	1	Ladder Retainer - Outer
15	104-285	1	Ladder Weldment (5132 and 5156)
	104-288	1	Ladder Weldment (5144 and 5168)
16	144-121	2	Fender (Weld On) (5132)
	142-832	2	Fender (Weld On) (5144)
	143-412	2	Fender (Weld On) (5156, 5168 and 5168TE)
17	144-864	2	Hay Dog
18	174-765	2	Bent Hitch Pin

Mounting Hardware:

(1) 101-741 Clevis Hitch to Clevis Mount	(12) 175-387 Operator's Manual Holder
171-877 2 Bolt, 3/4" x 2", GR8	170-532 4 Bolt, 5/16" x 5/8"
171-900 2 Lock Nut, 3/4", GR8	170-127 4 Flat Washer, 5/16"
(1) 103-779 Clevis Hitch to Clevis Mount	170-118 4 Lock Washer, 5/16"
171-877 4 Bolt, 3/4" x 2", GR8	170-119 4 Nut, 5/16"
171-900 4 Lock Nut, 3/4", GR8	(13) 142-894 Inner Retainer to Shell
(3) 103-674 Clevis Mount to Weigh Bar	170-054 2 Bolt, 3/8" x 1"
173-039 1 Bolt, 3/4" x 4-1/2" GR8	170-244 2 Flat Washer, 3/8"
171-900 1 Lock Nut, 3/4", GR8	170-047 2 Lock Nut, 3/8"
(4) 174-763 Weigh Bar to Undercarriage	(13) 142-894 Inner Retainer to Outer Retainer
173-039 1 Bolt, 3/4" x 4-1/2" GR8	170-054 2 Bolt, 3/8" x 1"
171-900 1 Lock Nut, 3/4", GR8	170-047 2 Lock Nut, 3/8"
(7) 143-413 Shield	(15) 104-285 or 104-288 Ladder to Shell
170-027 2 Bolt, 5/16" x 1"	170-005 2 Bolt, 3/8" x 1-1/4"
171-393 2 Belleville Washer, 3/8"	170-244 2 Flat Washer, 3/8"
170-028 2 Flanged Lock Nut, 5/16"	170-006 2 Lock Washer, 3/8"
(10) 102-439 Inner Swing Arm to Shell	170-007 2 Nut, 3/8"
170-002 1 Bolt, 1/2" x 1-1/2"	(15) 104-285 or 104-288 Ladder to Outer Ret.
170-042 1 Lock Nut, 1/2"	175-642 2 Shoulder Bolt, 3/8" x 1"
	176-246 2 Flanged Lock Nut, 3/8"
	(17) 144-864 Haydog
	171-774 2EA Bolt, 1/2" x 1-3/4"
	170-042 2EA Lock Nut, 1/2"

Ladder Assy - 5156

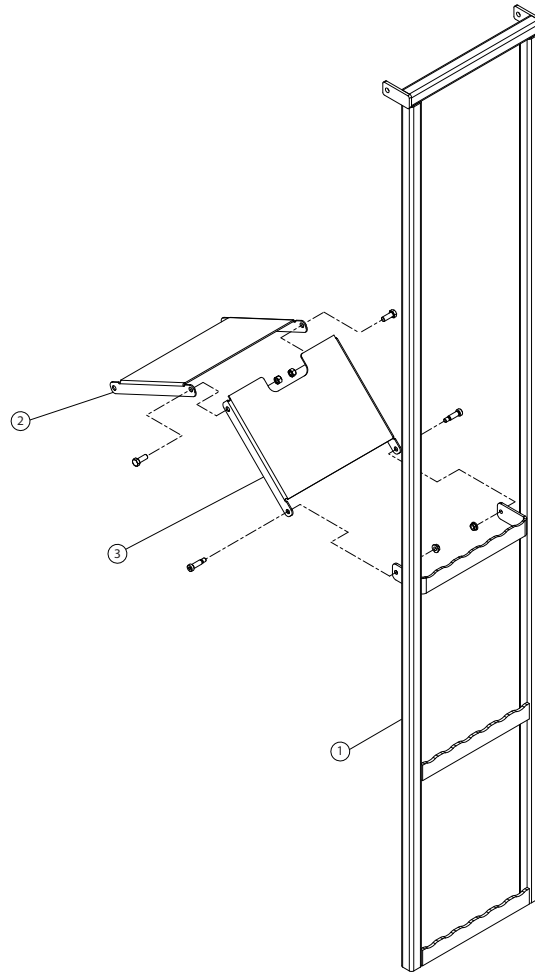


REF	PART NO	QTY	DESCRIPTION
	105-452	1	Ladder Assy
1	104-285	1	Ladder Weldment
2	142-894	1	Ladder Retainer - Inner
3	142-895	1	Ladder Retainer - Outer

Mounting Hardware:

- (1) 104-285 Ladder to Outer Ret.
 - 175-642 2 Shoulder Bolt, 3/8" x 1"
 - 170-028 2 Flanged Lock Nut, 5/16"
- (2) 142-894 Inner Retainer to Outer Retainer
 - 170-054 2 Bolt, 3/8" x 1"
 - 170-047 2 Lock Nut, 3/8"

Ladder Assy - 5168

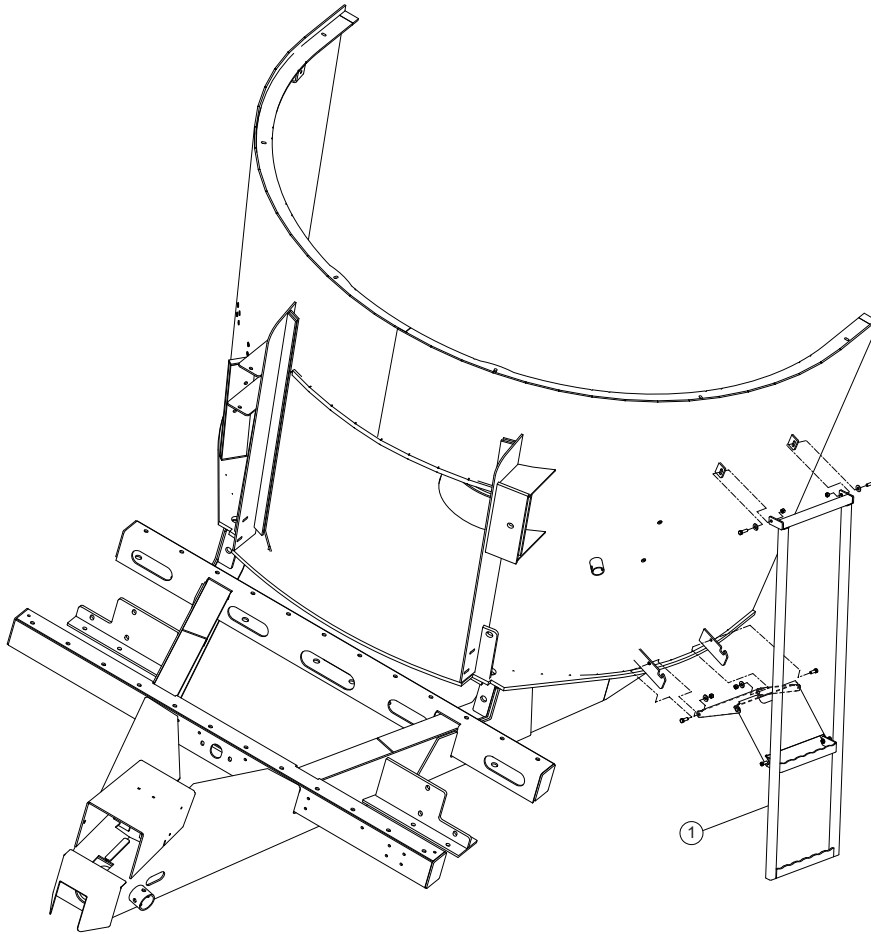


REF	PART NO	QTY	DESCRIPTION
	105-465	1	Ladder Assy
1	104-288	1	Ladder Weldment
2	142-894	1	Ladder Retainer - Inner
3	142-895	1	Ladder Retainer - Outer

Mounting Hardware:

- (1) 104-288 Ladder to Outer Ret.
- | | | |
|---------|---|--------------------------|
| 175-642 | 2 | Shoulder Bolt, 3/8" x 1" |
| 170-028 | 2 | Flanged Lock Nut, 5/16" |
- (2) 142-894 Inner Retainer to Outer Retainer
- | | | |
|---------|---|-----------------|
| 170-054 | 2 | Bolt, 3/8" x 1" |
| 170-047 | 2 | Lock Nut, 3/8" |

Ladder Installation - 5156

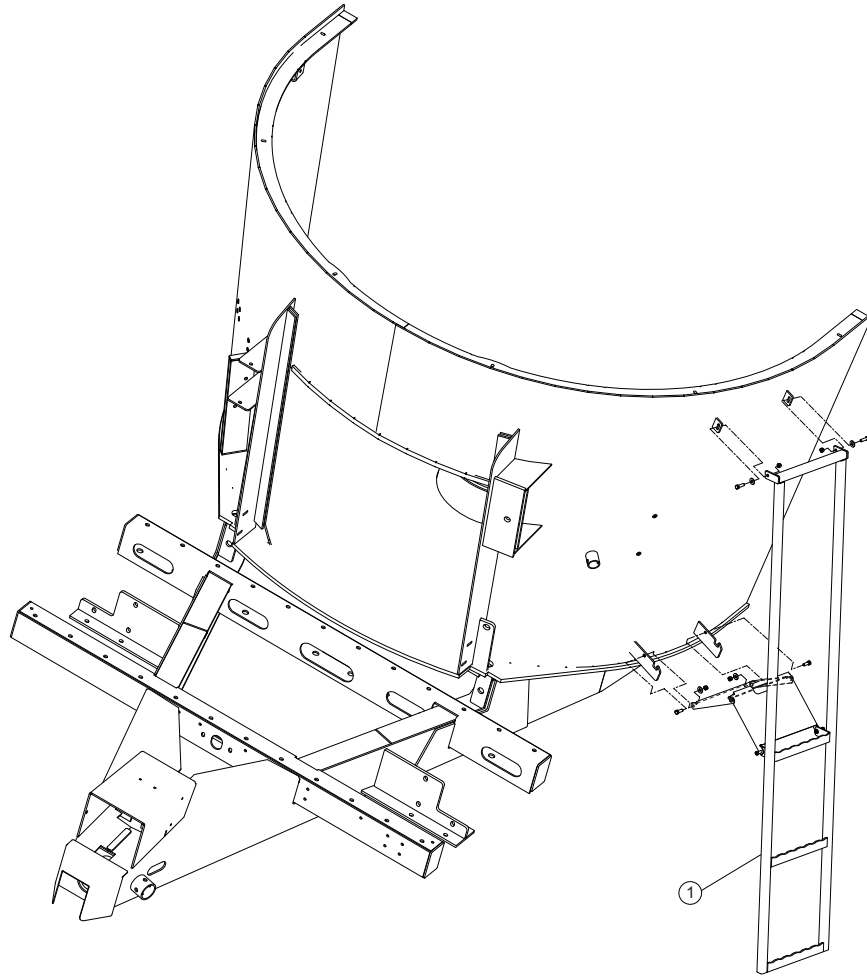


REF	PART NO	QTY	DESCRIPTION
1	105-452	1	Ladder Assy

Mounting Hardware:

- (1) 142-894 Inner Retainer to Shell
 - 170-054 2 Bolt, 3/8" x 1"
 - 170-244 2 Flat Washer, 3/8"
 - 170-047 2 Lock Nut, 3/8"
- (1) 104-285 Ladder to Shell
 - 170-005 2 Bolt, 3/8" x 1-1/4"
 - 170-244 2 Flat Washer, 3/8"
 - 170-047 2 Lock Nut, 3/8"

Ladder Installation - 5168

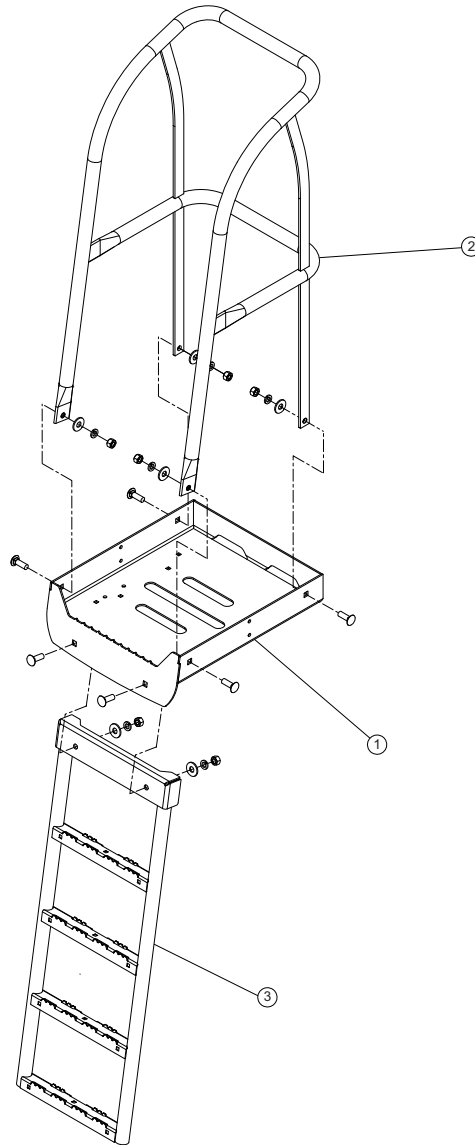


REF	PART NO	QTY	DESCRIPTION
1	105-465	1	Ladder Assy

Mounting Hardware:

- (1) 142-894 Inner Retainer to Shell
 170-054 2 Bolt, 3/8" x 1"
 170-244 2 Flat Washer, 3/8"
 170-047 2 Lock Nut, 3/8"
- (1) 104-285 Ladder to Shell
 170-005 2 Bolt, 3/8" x 1-1/4"
 170-244 2 Flat Washer, 3/8"
 170-047 2 Lock Nut, 3/8"

Platform Assy 5156/5168/5168TE

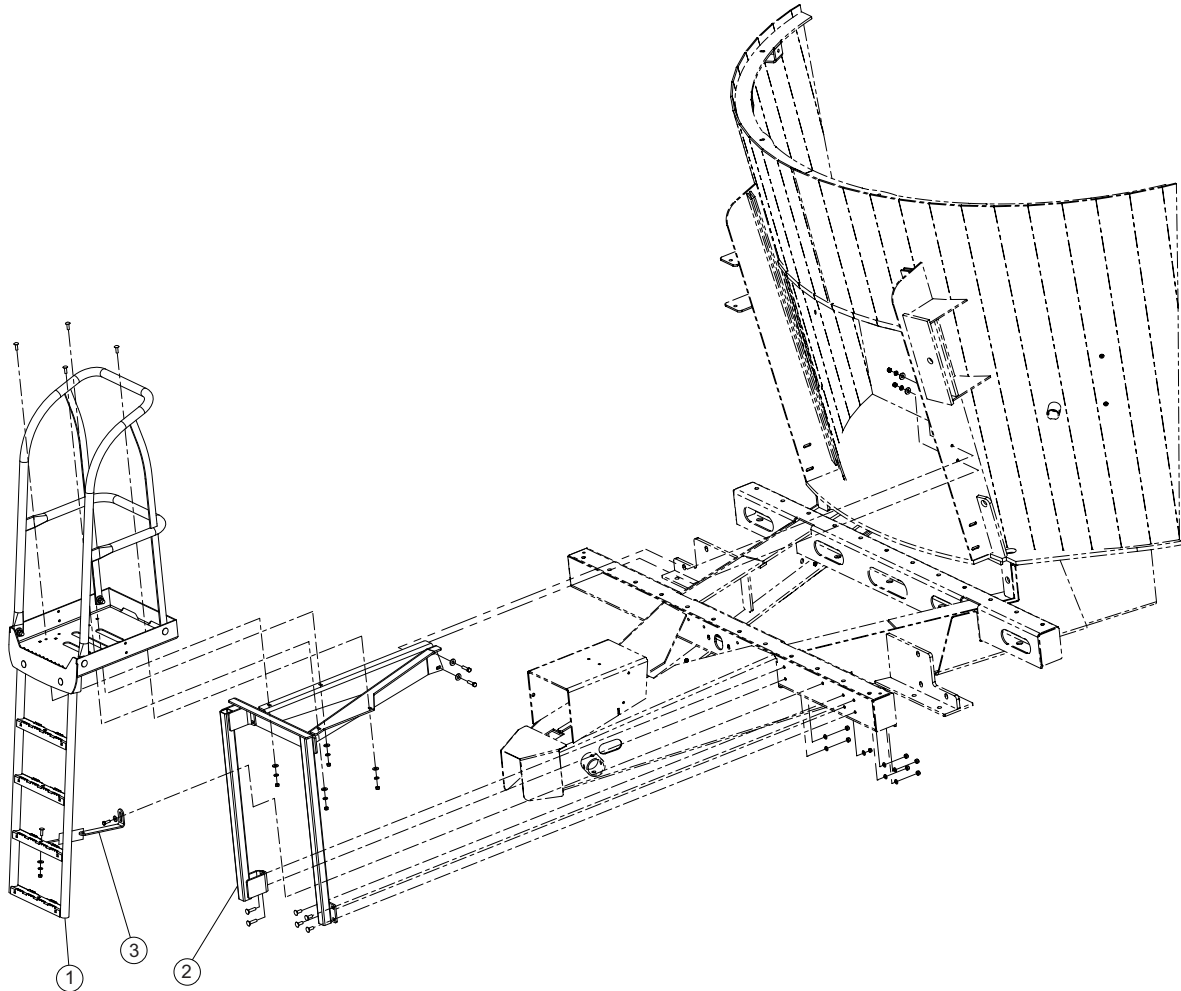


REF	PART NO	QTY	DESCRIPTION
	105-458	1	Platform Assy
1	A5318120	1	Footwalk
2	A5316800	1	Hand Rail
3	A5316700	1	Ladder

Mounting Hardware:

- (2) A5316800 Hand Rail to Footwalk
 - 174-918 4 Carriage Bolt, 1/2" x 1-1/2"
 - 170-040 4 Flat Washer, 1/2"
 - 170-003 4 Lock Washer, 1/2"
 - 170-004 4 Nut, 1/2"
- (3) A5316700 Ladder to Footwalk
 - 174-918 2 Carriage Bolt, 1/2" x 1-1/2"
 - 170-040 2 Flat Washer, 1/2"
 - 170-003 2 Lock Washer, 1/2"
 - 170-004 2 Nut, 1/2"

Platform Installation 5156/5168TE



REF	PART NO	QTY	DESCRIPTION
1	105-458	1	Platform Assy
2	105-235	1	Platform Mount
3	A5317921	1	Mount

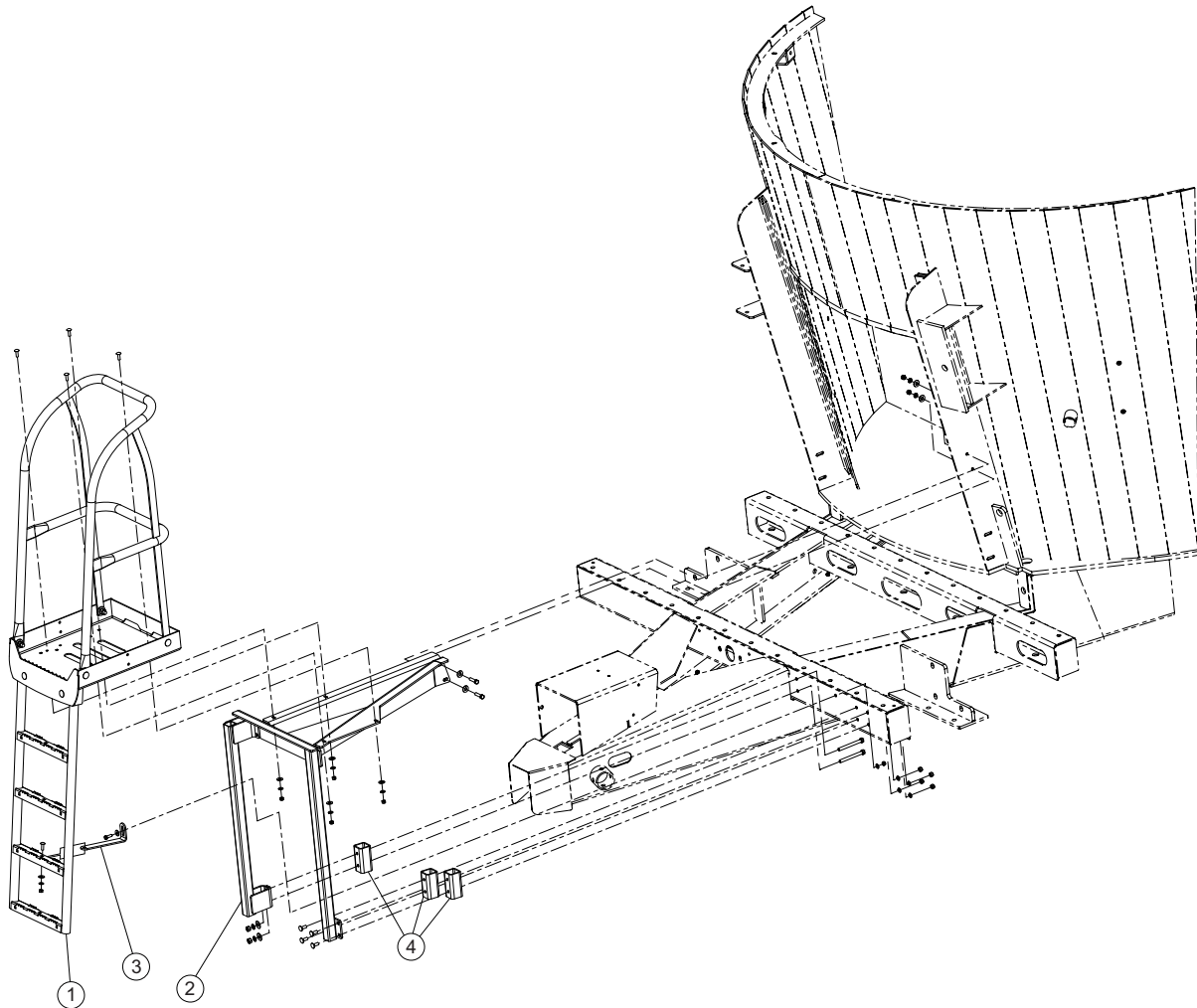
Mounting Hardware:

- (1) 105-458 Platform to Platform Mount
- 170-117 4 Truss Head Bolt, 5/16" x 1"
 - 170-127 4 Flat Washer, 5/16"
 - 170-118 4 Lock Washer, 5/16"
 - 170-007 4 Nut, 5/16"
- (2) 105-235 Platform Mount (Arms) to Plate
- 170-368 2 Bolt, 3/8" x 1-1/2"
 - 170-244 4 Flat Washer, 3/8"
 - 170-006 2 Lock Washer 3/8"
 - 170-007 2 Nut, 3/8"
- (2) 105-235 Platform Mount (bottom left) to Frame Tube
- 176-095 2 Carriage Bolt, 3/8" x 1-1/2"
 - 170-006 2 Lock Washer 3/8"
 - 170-007 2 Nut, 3/8"

Mounting Hardware:

- (2) 105-235 Platform Mount (bottom right) to Frame Tube
- 176-170 4 Carriage Bolt, 3/8" x 1"
 - 170-006 4 Lock Washer 3/8"
 - 170-007 4 Nut, 3/8"
- (3) A5317921 Mount to Ladder
- 170-117 1 Truss Head Bolt, 5/16" x 1"
 - 170-127 1 Flat Washer, 5/16"
 - 170-118 1 Lock Washer, 5/16"
 - 170-119 1 Nut, 5/16"
- (3) A5317921 Mount to Frame Tube
- 170-027 1 Bolt, 5/16" x 1"
 - 170-127 1 Flat Washer, 5/16"
 - 170-118 1 Lock Washer, 5/16"
 - 170-119 1 Nut, 5/16"

Platform Installation 5168



REF	PART NO	QTY	DESCRIPTION
1	105-458	1	Platform Assy
2	105-235	1	Platform Mount
3	147-139	1	Mount
4	147-140	3	Tube Spacer

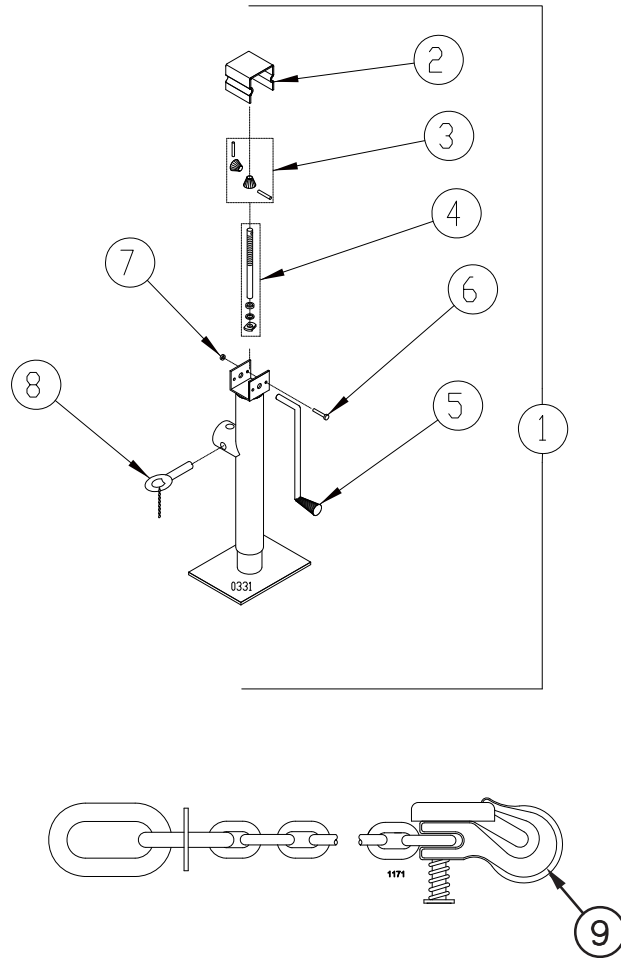
Mounting Hardware:

- (1) 105-458 Platform to Platform Mount
 - 170-117 4 Truss Head Bolt, 5/16" x 1"
 - 170-127 4 Flat Washer, 5/16"
 - 170-118 4 Lock Washer, 5/16"
 - 170-007 4 Nut, 5/16"
- (2) 105-235 Platform Mount (Arms) to Shell Plate
 - 170-368 2 Bolt, 3/8" x 1-1/2"
 - 170-244 4 Flat Washer, 3/8"
 - 170-006 2 Lock Washer 3/8"
 - 170-007 2 Nut, 3/8"
- (2) 105-235 Platform Mount (bottom left) Through Tube Spacer (147-140) to Frame Tube
 - 170-292 2 Bolt, 3/8" x 3-1/2"
 - 170-244 2 Flat Washer, 3/8"
 - 170-006 2 Lock Washer 3/8"
 - 170-007 2 Nut, 3/8"

Mounting Hardware:

- (2) 105-235 Platform Mount (bottom right) Through Tube Spacer (147-140) to Frame Tube
 - 171-283 4 Carriage Bolt, 3/8" x 3-1/2"
 - 170-006 4 Lock Washer 3/8"
 - 170-007 4 Nut, 3/8"
- (3) 147-139 Mount to Ladder
 - 170-117 1 Truss Head Bolt, 5/16" x 1"
 - 170-127 1 Flat Washer, 5/16"
 - 170-118 1 Lock Washer, 5/16"
 - 170-119 1 Nut, 5/16"
- (3) 147-139 Mount to Frame tube
 - 170-027 1 Bolt, 5/16" x 1"
 - 170-127 1 Flat Washer, 5/16"
 - 170-118 1 Lock Washer, 5/16"
 - 170-119 1 Nut, 5/16"

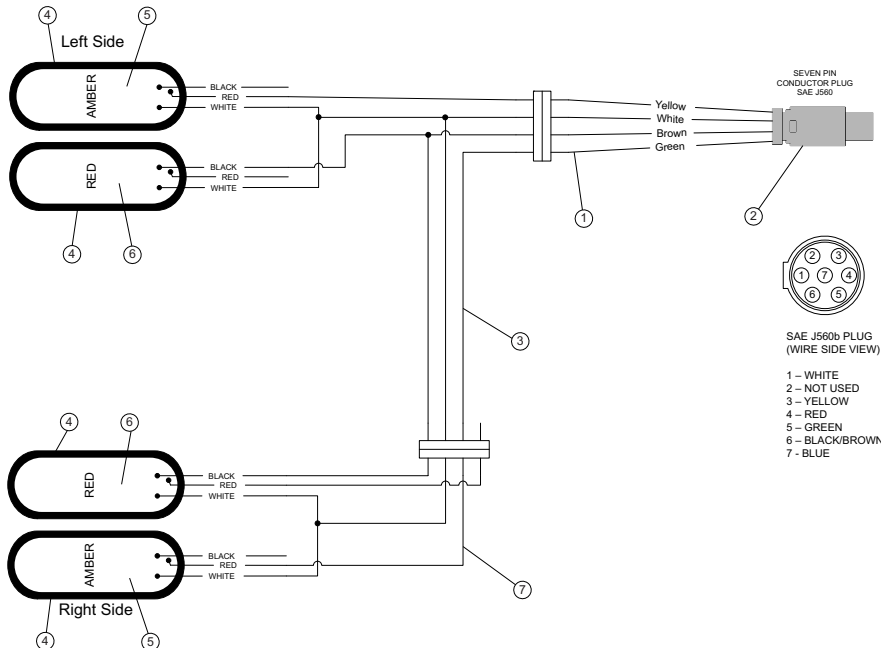
Jackstand Parts and Safety Chains



REF PART NO QTY DESCRIPTION

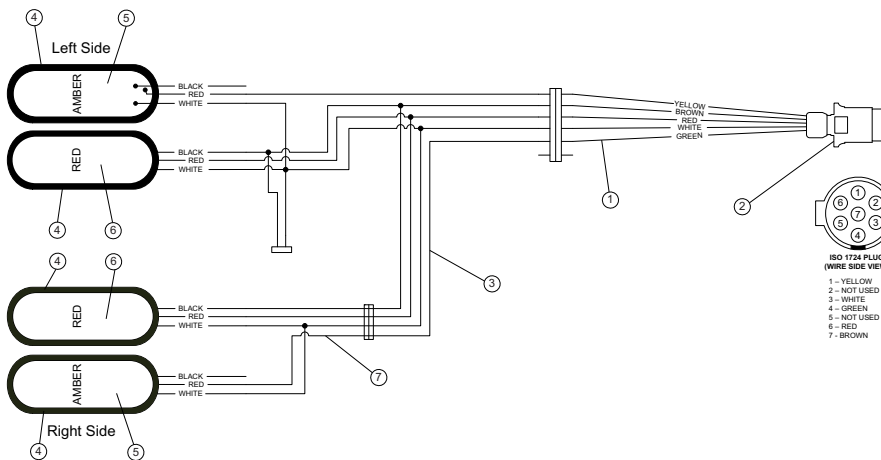
1	171-610	1	Jack, Sidewind 7000#
2	171-814	1	Cover
3	171-614	1	Gear Kit (2 bevel gears, 2 pins)
4	171-611	1	Screw, Nut, Bearing & Washer Assy
5	171-612	1	Crank Assembly
6	170-509	2	Carriage Bolt; 1/4" x 3"
7	170-125	2	Nut, 1/4"
8	171-613	1	Pull Pin
9	172-041	1	Safety Chain, 30,000# (5132 and 5144)
	173-077	1	Safety Chain, 40,000# (5156 and 5168)

Light Kit Standard US



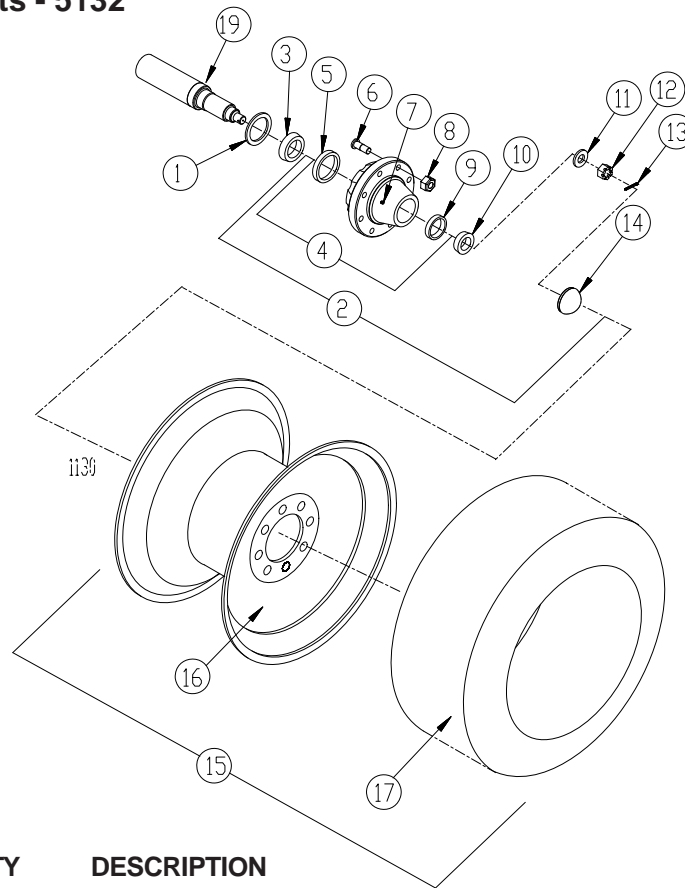
REF	PART NO	QTY	DESCRIPTION
	174-675	1	Light Kit
1	174-775	1	Wire Harness
2	172-110	1	7 Pin Connector (SAE J560B)
3	176-848	1	Light, LH Harness
4	174-725	4	Grommet
5	174-673	2	Light, Amber
6	174-674	2	Light, Red
7	177-480	1	Light, RH Harness

Light Kit Standard Export



REF	PART NO	QTY	DESCRIPTION
	176-343	1	Light Kit
1	176-360	1	Wire Harness
2	176-000	1	7 Pin Connector (ISO)
3	176-369	1	Light, LH Harness
4	174-725	4	Grommet
5	174-673	2	Light, Amber
6	174-674	2	Light, Red
7	176-370	1	Light, RH Harness

Wheel Hub and Parts - 5132

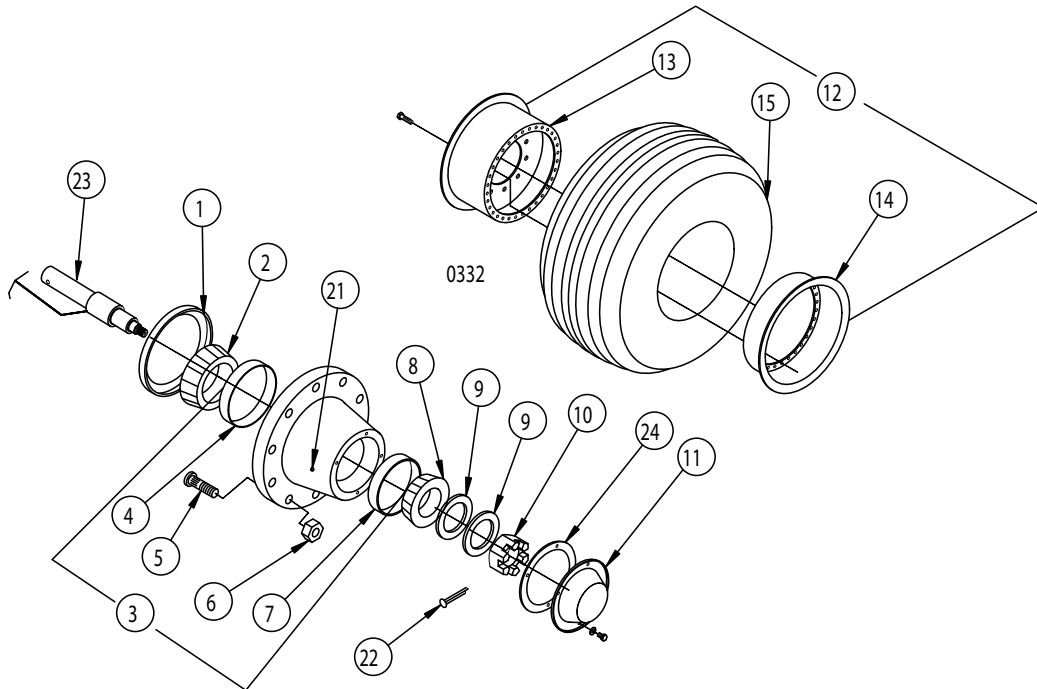


REF	PART NO	QTY	DESCRIPTION
1	175-224	1	Grease Seal
2	171-815	1	8-Bolt Hub Assembly
3	171-828	1	Inside Bearing Cone
4	171-823	1	8-Bolt Hub
5	171-824	1	Inside Bearing Race
6	171-826	8	Wheel Stud; 5/8"
7	170-865	1	Grease Zerk; 1/8"
8	171-827	8	Wheel Nut; 5/8"
9	171-825	1	Outside Bearing Race
10	171-829	1	Outside Bearing Cone
11	171-832	1	Spindle Washer
12	171-833	1	Castle Nut; 1" NF
13	170-056	1	Cotter Pin; 1/4" x 2"
14	171-830	1	Dust Cap
15	175-779	1	Wheel and Tire 34 x 1000R16 (Aircraft) (Not Shown)
16	175-237	1	Wheel Rim, 16 x 8 (Aircraft)
17	175-238	1	Tire, 34" x1000R16" (Aircraft)
18	175-262	1	Tube, 34" x 16" (Aircraft) (Not Shown)
15	177-633	1	Wheel and Tire 33 x 15.5 - 16.5 left hand (Skidsteer) (Not Shown)
15	177-634	1	Wheel and Tire 33 x 15.5 - 16.5 right hand (Skidsteer) (Not Shown)
16	177-635	1	Wheel Rim, 16.5 x 12 (Skidsteer)
17	175-270	1	Tire, 33.50 x 15.50 NHS 14 Ply.
19	175-222	2	Weigh Bar, Spindle

Mounting Hardware:

- (19) 175-222 Weigh Bar, Spindle
 170-067 2EA Bolt, 5/8" x 4-1/2"
 170-031 2EA Lock Nut, 5/8"

Wheel Hub and Parts - 5144



REF	PART NO	QTY	DESCRIPTION
1	174-754	1	Grease Seal (Transcom #28464TA)
2	172-360	1	Bearing Cone (Timken #33275)
3	172-396	1	Hub, Wheel 10 Hole
4	172-361	1	Bearing Race; #33462 (Timken #33462)
5	174-784	10	Stud; Wheel, 3/4" NF
6	170-920	10	Lug Nut; 3/4" NF
7	170-922	1	Bearing Race; 453A
8	170-921	1	Bearing Cone; Timken 460
9	170-928	2	Washer Flat 1 1/4" USS
10	170-927	1	Nut; Spindle 1 1/4" NF
11	170-926	1	Cover
12	173-300	2	Wheel and Tire Assembly, H40 x 14.5 - 19, 2" Neg Offset (Aircraft)
13	173-301	1	Inner Wheel Rim with Center Disc
14	173-302	1	Outer Wheel Rim
15	173-926	1	Tire, 40 x 14.5 - 19 (Aircraft)
16	173-917	1	Tube, H40 x 14.5 (not shown)
17	173-916	1	Flap, H40 x 14.5 (not shown)
18	175-126	2	Wheel Rim; 22 1/2" x 11 1/4", 10 Bolt, (pos 2" offset) (not shown) (Truck)
19	171-653	2	Tire, Truck 15" x 22 1/2" (not shown)
20	174-577	2	Inner Tube, Truck 15R/16.5R/18R x 22.5 (not shown)
21	170-023	1	Grease Fitting, 1/4"
22	170-056	1	Cotter Pin, 1/4" x 2"
23	174-758	2	Weigh Bar; Spindle
24	176-936	1	Gasket, Hubcap

Mounting Hardware:

(11 and 24) 170-926 Cover and 176-936 Gasket to Hub

170-262 4EA Bolt, 5/16" x 3/4"

170-118 4EA Lock Washer, 5/16"

(23) 174-758 Weigh Bar, Spindle

170-067 2EA Bolt, 5/8" x 4-1/2"

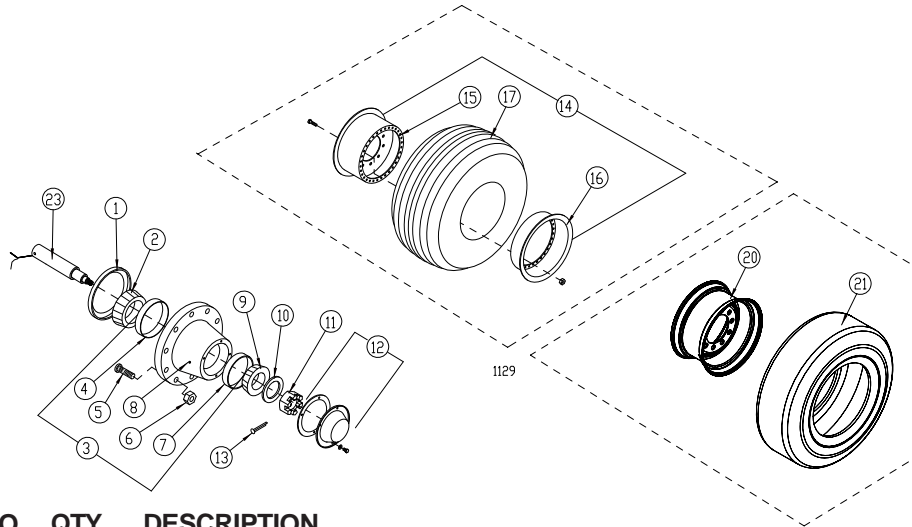
170-031 2EA Lock Nut, 5/8"

(13 to 14) 173-302 to 173-301 Wheel Rims

170-373 32EA Bolt, 1/2" x 1-1/4"

170-042 32EA Lock Nut, 1/2"

Wheel Hub and Parts - 5156, 5168 and 5168TE



REF	PART NO	QTY	DESCRIPTION
1	174-755	2	Grease Seal; Transcom #37605SA
2	173-001	2	Bearing Cone; HM218248
3	172-999	2	Hub, Wheel 10 Hole
4	173-031	1	Bearing Race; HM218210
5	174-784	10	Stud, Wheel, 3/4" NF
6	170-920	10	Lug Nut; 3/4" NF
7	173-032	1	Bearing Race; HM212011
8	170-023	1	Grease Zerk, 1/4"
9	173-002	2	Bearing Cone; HM212049
10	174-757	2	Spindle Washer 2-1/16" x 4"
11	174-756	2	Castle Nut
12	173-007	2	Cover
13	174-804	1	Roll Pin, 3/8" x 3"
14	173-300	2	Wheel and Tire Assembly, H40 x 14.5 - 19, 2" Neg Offset (Aircraft)
15	173-301	1	Inner Wheel Rim with Center Disc
16	173-302	1	Outer Wheel Rim
17	173-926	1	Tire, 40 x 14.5 - 19 (Aircraft)
18	173-917	1	Tube, H40 x 14.5 (not shown)
19	173-916	1	Flap, H40 x 14.5 (not shown)
14	175-331	2	Wheel and Tire Assembly, 46 x 18 - 20 (Aircraft) (5168 and 5168TE)
15	175-334	1	Inner Wheel with Center Disc (5168 and 5168TE)
16	175-333	1	Outer Wheel (5168 and 5168TE)
17	175-332	1	Tire, 46 x 18 - 20 (Aircraft) (5168 and 5168TE)
	177-749	1	TIRE, 46 X 18.00 (Aircraft Lugged Pattern)
18	175-335	1	Tube, 46 x 18 - 20 (not shown) (5168 and 5168TE)
19	175-336	1	Flap, 46 x 18 (not shown) (5168 and 5168TE)
20	171-616	2	Wheel, 22.5 x 11.25 10 Hole, 0 Offset (5156 Only)
21	171-653	2	Tire, 22.5 385-65R Duplex Recap Truck Rib Hwy Tread (5156 Only)
22	174-577	2	Tube, 15R/16.5R/18R x 22.5 (not shown) (5156 Only)
23	174-759	2	Weigh Bar, Spindle

Mounting Hardware:

(12) 173-007 Cover to Hub

170-262 6EA Bolt, 5/16" x 3/4"

170-118 6EA Lock Washer, 5/16"

(15 to 16) 173-301 to 173-302 Wheel Rims

or 175-334 to 175-333 Wheel Rims

170-373 32EA Bolt, 1/2" x 1-1/4"

170-042 32EA Lock Nut, 1/2"

(23) 174-759 Weigh Bar, Spindle

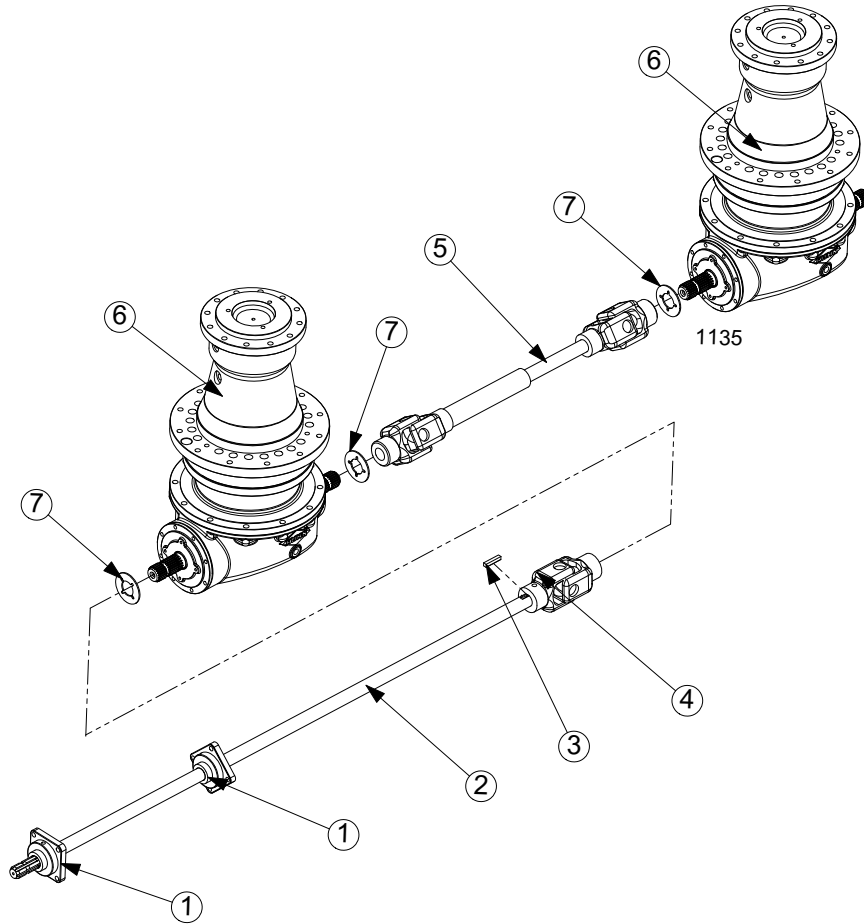
170-067 2EA Bolt, 5/8" x 4-1/2"

170-031 2EA Lock Nut, 5/8"

Kuhn North America Inc.

1501 West 7th Ave., Brodhead, WI 53520

Drive - 5132 and 5144



REF	PART NO	QTY	DESCRIPTION
1	171-585	2	Flange Bearing, 1-3/8", 4 Bolt
2	143-556	1	Input Shaft, 1-3/8" x 76-1/4"
3	170-052	1	Key, Square, 3/8" x 3/8" x 2-1/8"
4	176-568	1	U Joint Assembly
	176-520	1	Yoke, 1-3/8" - Keyed
	176-522	1	Cross and Bearing Kit
	176-521	1	Yoke, 1-3/4" - 20 Spline
5	176-566	1	PTO Driveline
6	176-168	2	Planetary Gearbox, 14.6:1
7	141-136	3	Trash Guard, 1/8" x 3-1/2", 1-11/16" dia. center hole

Mounting Hardware:

(1) 171-585 Flange Bearing

171-774 4EA Bolt, 1/2" x 1-3/4"

170-003 4EA Lock Washer, 1/2"

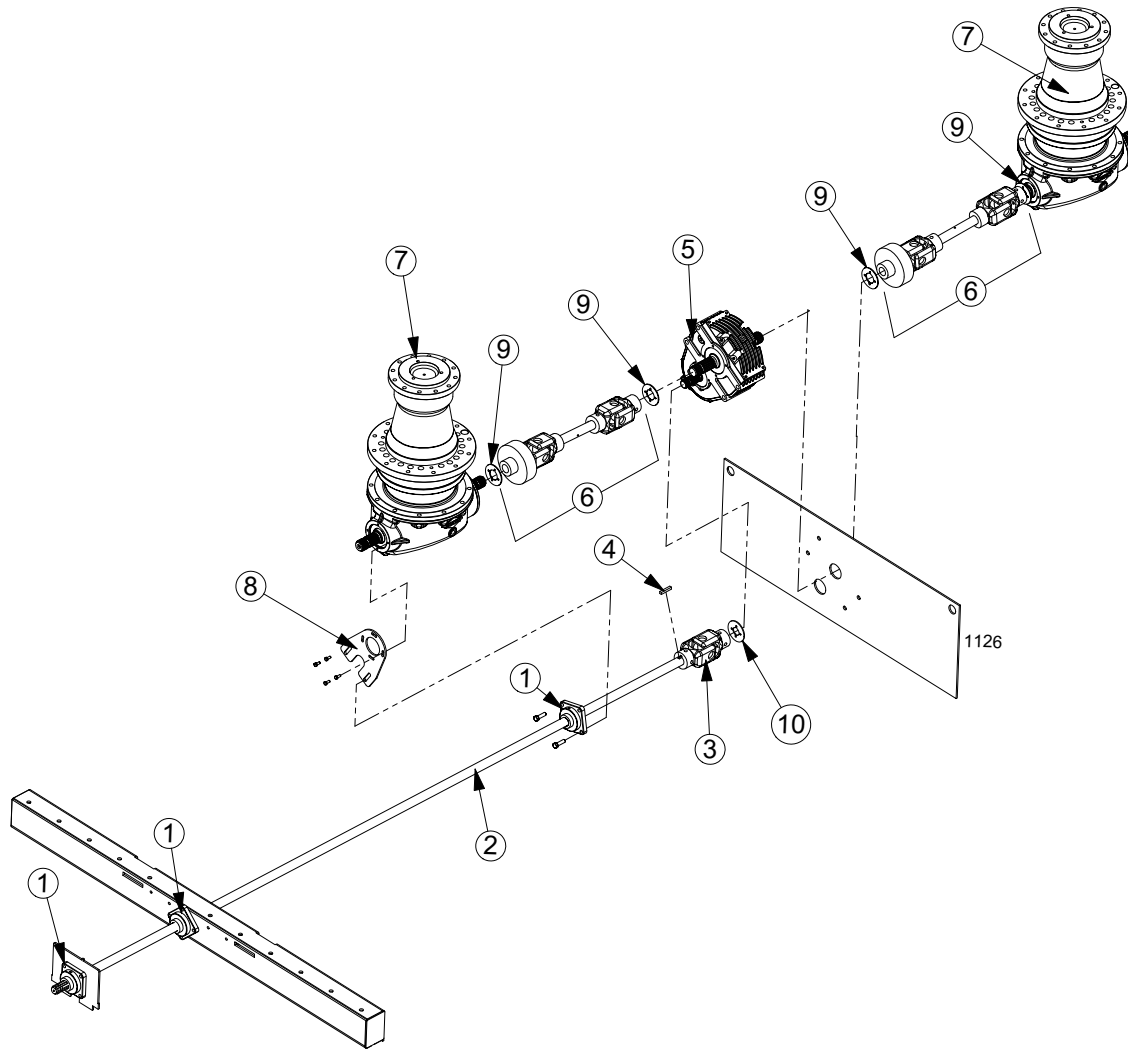
170-004 4EA Nut, 1/2"

(6) 176-168 Planetary Gearbox to Shell Floor

175-634 12EA Bolt, M16X 45MM

170-010 12EA Lock Washer, 5/8"

Drive - 5156, 5168 and 5168TE

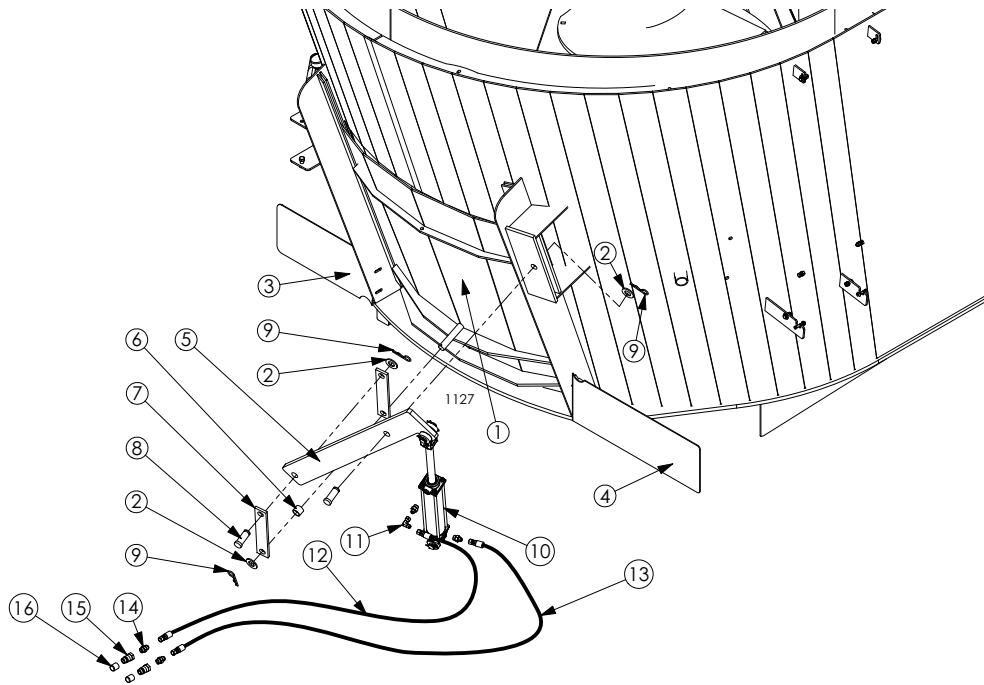


REF	PART NO	QTY	DESCRIPTION
1	171-585	3	Flange Bearing, 1-3/8", 4 Bolt
2	143-931	1	Input Shaft, 1-3/8" x 139-1/2"
3	176-569	1	U Joint Assembly
	176-520	1	Yoke, 1-3/8" - Keyed
	176-522	1	Cross and Bearing Kit
	176-523	1	Yoke, 1-3/8" - 21 Spline
4	170-052	1	Key, Square, 3/8" x 3/8" x 2-1/8"
5	176-146	1	Gearcase Assembly, 2.00:1
6	177-130	2	PTO Driveline
7	176-168	2	Planetary Gearbox, 14.6:1
8	145-062	1	Bearing Mount
9	141-136	4	Trash Guard, 1/8" x 3-1/2", 1-11/16" dia. center hole
10	143-379	1	Trash Guard, 1/8" x 3-1/2", 1.32" dia. center hole

Mounting Hardware:

(1) 171-585 Flange Bearing	(7) 176-168 Planetary Gearbox to Shell Floor
171-774 4EA Bolt, 1/2" x 1-3/4"	175-634 12EA Bolt, M16X 45MM
170-003 4EA Lock Washer, 1/2"	170-010 12EA Lock Washer, 5/8"
170-004 4EA Nut, 1/2"	
(5) 176-146 Gearcase Assy to Frame	(8) 145-062 Bearing Mount to 176-168 Planetary Gearbox
170-381 4 Bolt, 5/8" x 6"	80060820 4 Bolt, M8 x 20
170-010 4 Lock Washer, 5/8"	170-118 4 Lock Washer, 5/16"
170-011 4 Nut, 5/8"	

Front Door Parts

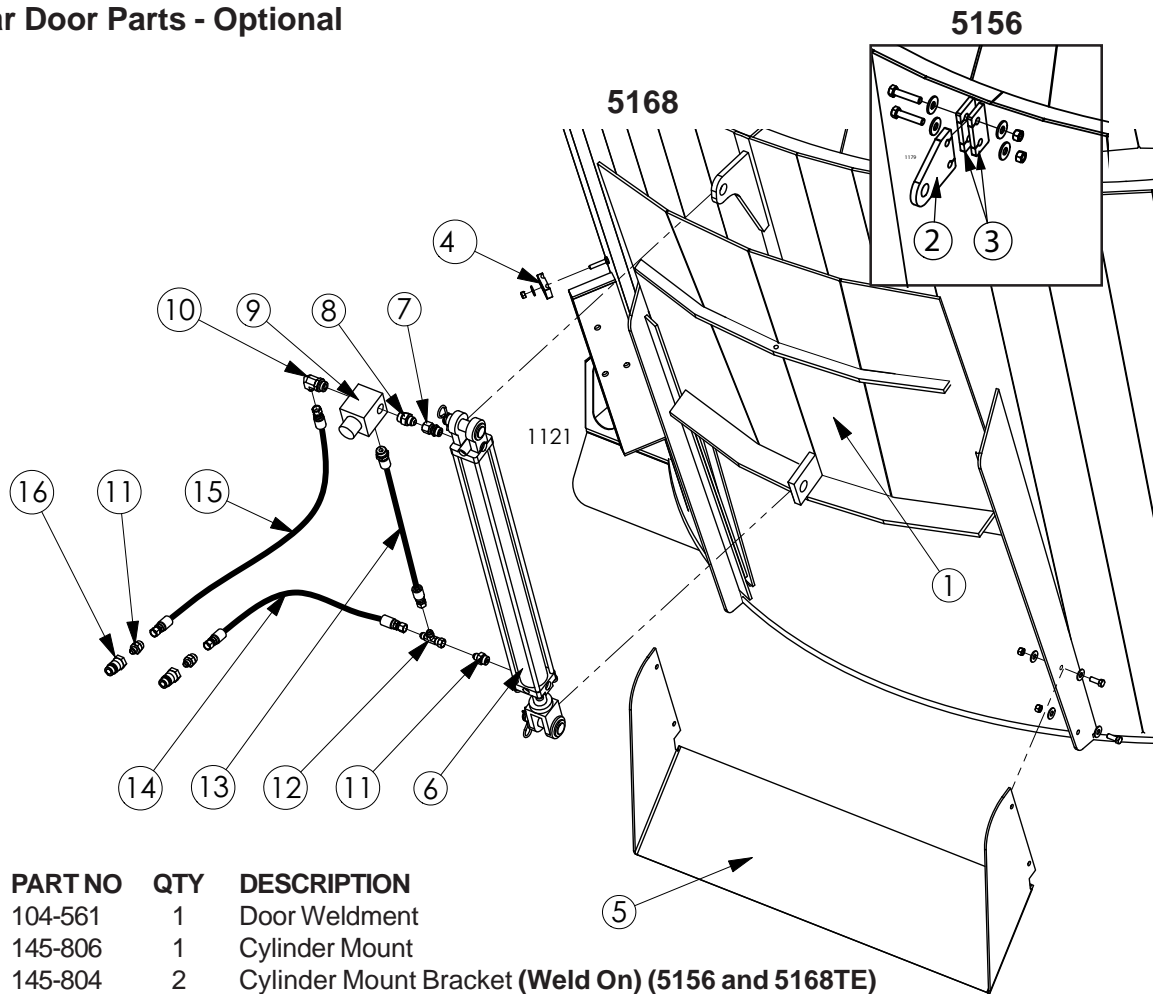


REF	PART NO	QTY	DESCRIPTION	
1	104-397	1	Door Weldment (5132 and 5144)	
	104-887	1	Door Weldment (5156)	
	104-489	1	Door Weldment (5168)	
2	170-122	3	Flat Washer, 1"	
	3	145-070	1	Conveyor Slide Shield (Left CamCline Discharge)
		104-844	1	Conveyor Slide Shield (5132, Right CamCline Discharge)
		104-899	1	Conveyor Slide Shield (5144, Right CamCline Discharge)
4	104-877	1	Conveyor Slide Shield (5156, 5168 and 5168TE, Right CamCline Discharge)	
	104-844	1	Conveyor Slide Shield (5132, Left CamCline Discharge)	
	104-899	1	Conveyor Slide Shield (5144, Left CamCline Discharge)	
	104-877	1	Conveyor Slide Shield (5156, 5168 and 5168TE, Left CamCline Discharge)	
5	141-430	1	Lever Arm	
	140-806	1	Spacer	
7	141-423	2	Clevis	
8	170-073	2	Clevis Pin	
9	170-074	3	Hairpin	
10	175-684	1	Hydraulic Cylinder, 2-1/2" x 12" (Seal Kit #170-464, Pins #173-274, Clips #173-275)	
11	175-673	1	90° Adapter, 06JFS x 06JM	
12	176-501	1	Hydraulic Hose, 1/4" x 200"	
13	176-291	1	Hydraulic Hose, 1/4" x 179"	
14	175-675	4	Straight Adapter, 08OM x 06JM	
15	175-687	2	Quick Coupler	
16	176-064	2	Plastic Cap	

Mounting Hardware:

(3 or 4)	145-070, 104-844, 104899 or 104877		Conveyor Slide Shields
	170-256	2EA	Bolt, 5/16 x 7/8"
	170-127	2EA	Flat Washer, 5/16"
	170-118	2EA	Lock Washer, 5/16"
	170-119	2EA	Nut, 5/16"

Rear Door Parts - Optional



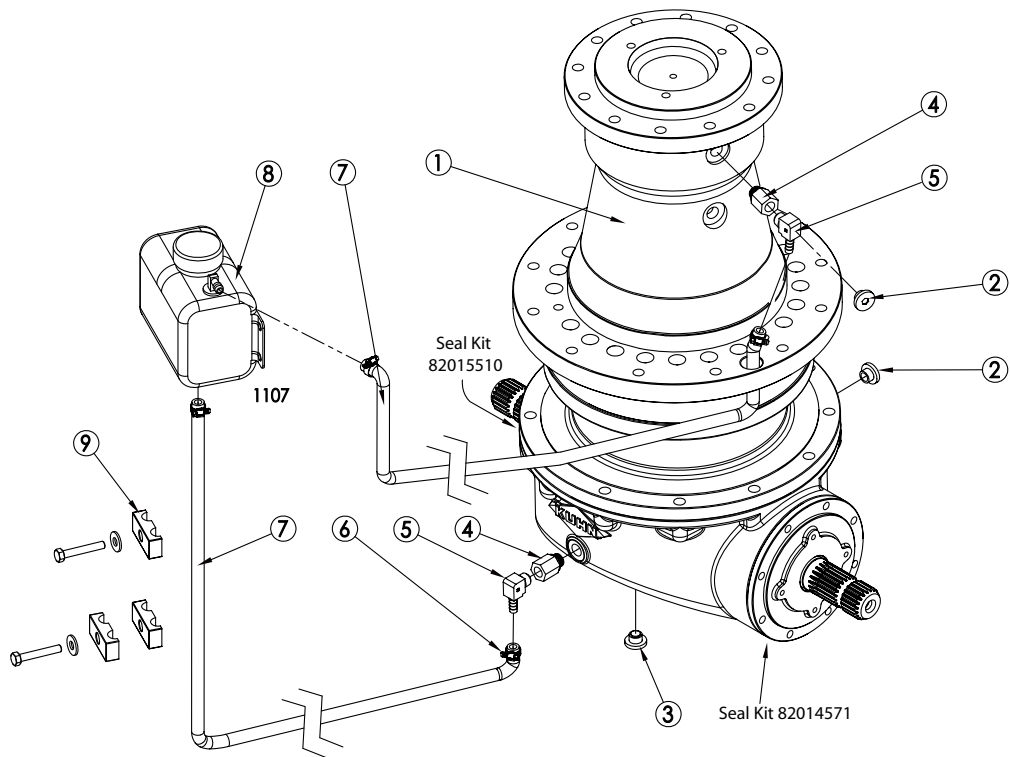
REF	PART NO	QTY	DESCRIPTION
1	104-561	1	Door Weldment
2	145-806	1	Cylinder Mount
3	145-804	2	Cylinder Mount Bracket (Weld On) (5156 and 5168TE)
	145-977	2	Cylinder Mount Bracket (Weld On) (5168)
4	174-772	3	Tube Clamp
5	145-822	1	Tip-Off
6	176-151	1	Hydraulic Cylinder, 2" x 24"
			(Seal Kit #170-075, Pins #173-274, Clips #173-275) (5156 and 5168TE)
	176-255	1	Hydraulic Cylinder, 2" x 30" (Seal Kit #170-075, Pins #173-274, Clips #173-275) (5168)
7	176-423	1	Straight Adapter, 08OM x 08JFS
8	175-699	1	Straight Adapter, 10OM x 08JM
9	176-425	1	Ball Spring Relief Valve
10	175-093	1	90° Adapter, 10OM x 06JM
11	175-675	3	Straight Adapter, 08OM x 06JM
12	176-072	1	Tee Adapter, 06JM x 06JM x 06JFS
13	176-760	1	Hydraulic Hose Assembly, 3/8" x 27" (5156 and 5168TE)
	176-426	1	Hydraulic Hose Assembly, 3/8" x 33" (5168)
14	176-769	1	Hydraulic Hose Assembly, 1/4" x 378"
15	176-770	1	Hydraulic Hose Assembly, 1/4" x 386"
16	175-687	2	Quick Coupler

Mounting Hardware:

(2)	145-806	Cylinder Mount to Bracket
	172-387	2 Bolt, 1/2" x 2-1/4"
	170-040	4 Flat Washer, 1/2"
	170-042	2 Lock Nut, 1/2"
(5)	144-970	Tip-Off to Door Frame
	170-005	4 Bolt, 3/8" x 1-1/4"
	170-244	8 Flat Washer, 3/8"
	170-007	4 Nut, 3/8"

(17)	174-772	Tube Clamps to Shell
	170-127	1EA Flat Washer, 5/16"
	170-028	1EA Flanged Lock Nut, 5/16"
	170-372	1 Bolt, 5/16" x 1-1/2"
		(used for clamp connected to PTO housing)

Planetary Gearbox and Oil Reservoir

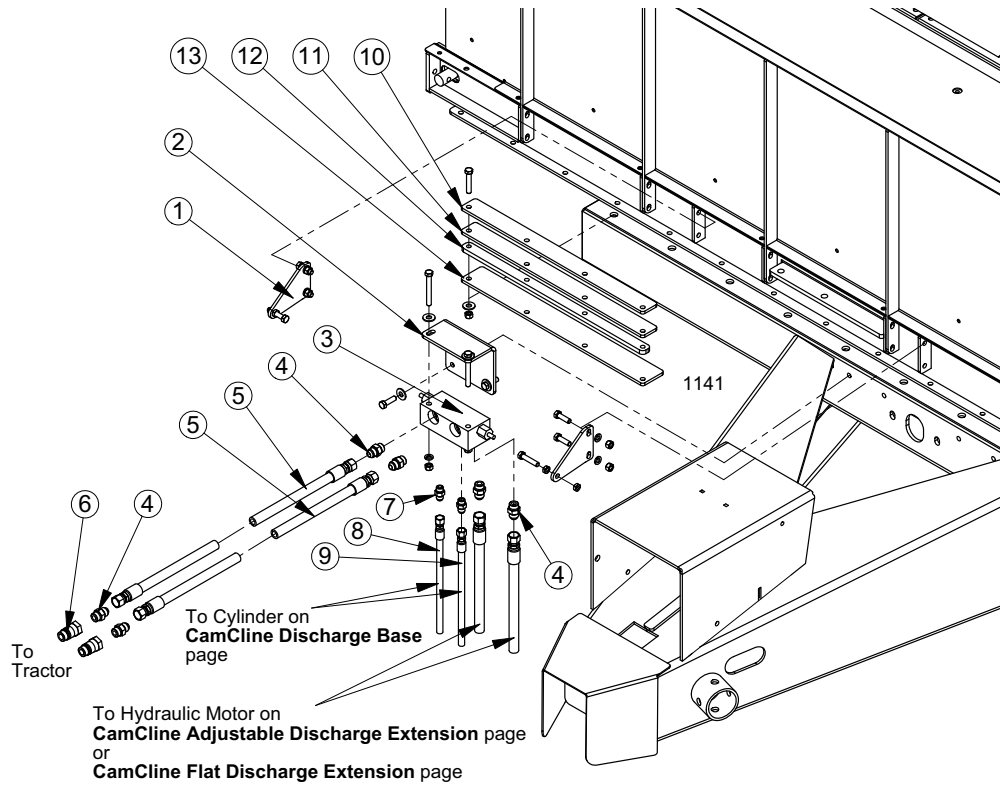


REF	PART NO	QTY	DESCRIPTION
1	176-168	2	Planetary Gearbox
	82015510	1	Seal Kit (Not Shown)
	82014571	1	Seal Kit (Not Shown)
2	176-192	2	Oil Plug
3	176-193	1	Oil Plug, Magnetic
4	175-606	4	Straight Adapter, 18Y x 06FP
5	176-606	4	90° Adapter, 06MP x 06MX
6	172-715	8	Hose Clamp, SAE #4 Worm Drive
7	181-166	16'	Hose, 3/8" - Reservoir to Front Gear Box (2 lengths of 8' required)
	181-166	24'	Hose, 3/8" - Reservoir to Rear Gear Box (2 lengths of 18' required)
8	176-531	2	Oil Reservoir
9	174-771	3	Tube Clamp

Mounting Hardware:

(8) 176-531 Oil Reservoir to Shell	(9) 2 x 174-771 Tube Clamps stacked, to Shell
170-262 4EA Bolt, 5/16" x 3/4"	170-369 1EA Hex Head Cap Screw, 5/16" x 2-1/2"
170-127 4EA Flat Washer, 5/16"	170-127 1EA Flat Washer, 5/16"
	(9) 1 x 174-771 Tube Clamp to Shell
	170-372 1EA Hex Head Cap Screw, 5/16" x 1-1/2"
	170-127 1EA Flat Washer, 5/16"

CamCline Actuator and Slides



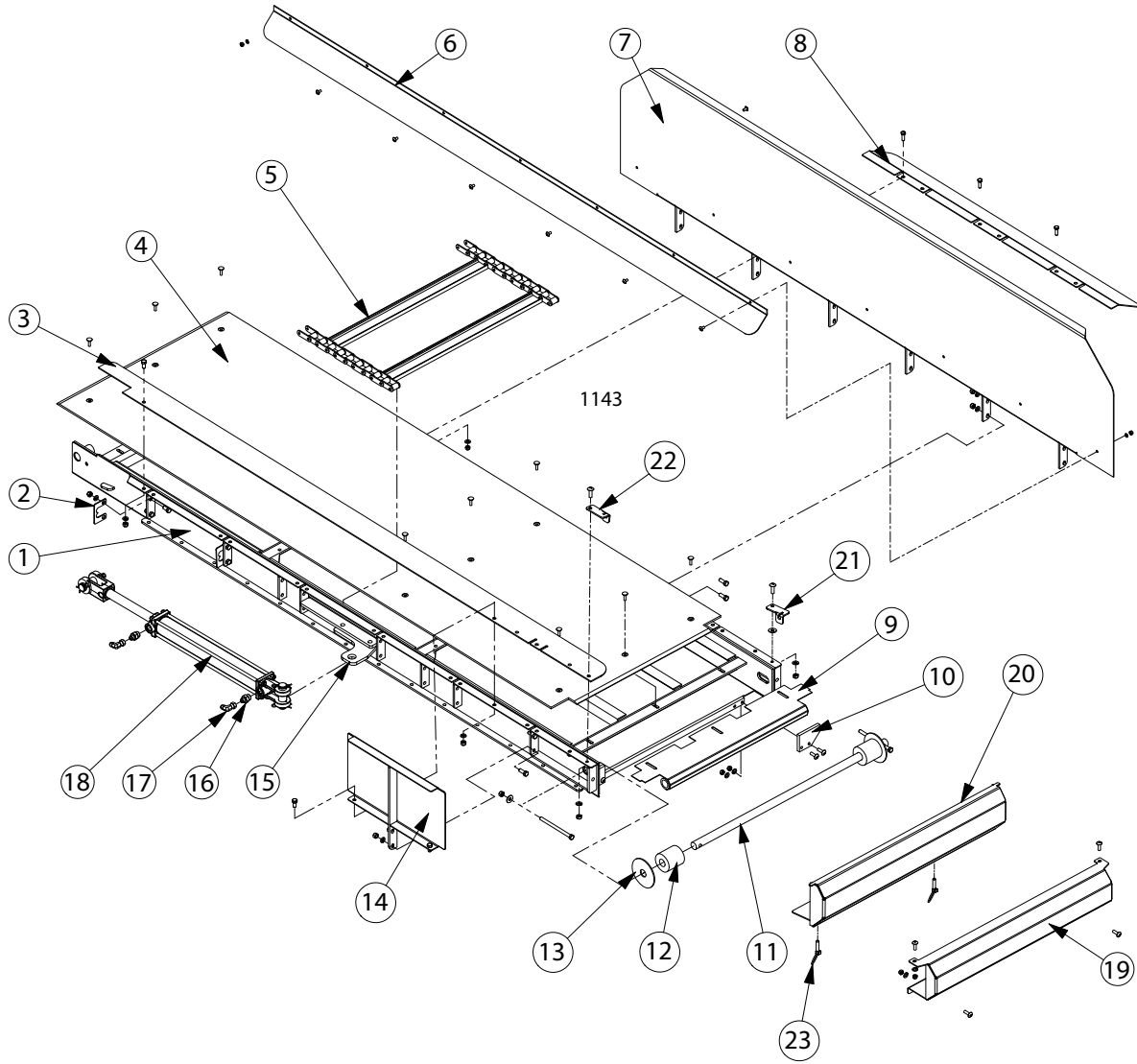
REF	PART NO	QTY	DESCRIPTION
	104-990	1	Conveyor Slide Assembly
1	145-453	2	Actuator Arms
2	145-496	1	Actuator Valve Bracket
3	176-624	1	Actuator Valve
	177-172	2	Actuator Cartridge
4	175-700	6	Straight Adapter, 08OM x 08JM
5	176-626	2	Hose Assembly, 1/2" x 90", 08JFS x 08JFS
6	175-687	2	Quick Coupler
7	175-911	2	Straight Adapter, 06OM x 06JM
8	175-730	1	Hose Assembly, 1/4" x 102"
9	175-729	1	Hose Assembly, 1/4" x 82"
-	175-675	2	Straight Adapter, 08OM x 06JM (Shown on CamCline Discharge Base page)
-	175-673	2	90° Adapter, 06JFS x 06JM (Shown on CamCline Discharge Base page)
-	176-049	1	Hydraulic Cylinder, 2" x 16" (Shown on CamCline Discharge Base page)
-	145-446	1	Cylinder Bracket (Shown on CamCline Discharge Base page)
10	145-341	4	Upper Retainer
11	145-340	4	Upper Plastic Slide Surface
12	145-339	4	Side Plastic Slide Surface
13	145-338	4	Lower Plastic Slide Surface

Mounting Hardware:

(1) 145-453 Actuator Arms to Unit Frame	(3) 176-624 Actuator Valve to Bracket
174-917 2EA Bolt, SS, 3/8" x 1-1/4"	176-697 2 Bolt, 3/8" x 3" Full Thread
170-006 2EA Lock Washer, 3/8"	170-244 2 Flat Washer, 3/8"
170-007 2EA Nut, 3/8"	170-006 2 Lock Washer, 3/8"
	170-007 2 Nut, 3/8"
(1) 145-453 Actuator Arms - Actuating Bolts	(10-13) 145-341, 145-340, 145-339 and 145-338 CamCline Slide components bolted together onto Unit Frame
170-128 1EA Bolt, 3/8" x 2-1/2"	170-245 4EA* Bolt, 3/8" x 2"
170-007 2EA Nut, 3/8"	170-244 4EA* Flat Washer, 3/8"
(2) 145-496 Actuator Bracket to Unit Frame	170-047 4EA* Lock Nut, 3/8"
170-005 2 Bolt, 3/8" x 1-1/4"	
170-244 2 Flat Washer, 3/8"	
170-006 2 Lock Washer, 3/8"	
170-007 2 Nut, 3/8"	

*Quantity may vary

CamCline Discharge Base



Drawing depicts discharge to left side of unit. For mixers configured with discharge to the right, reverse all components in above drawing.

REF	PART NO	QTY	DESCRIPTION
	104-960	1	CamCline Assembly (5132)
	104-961	1	CamCline Assembly (5144, 5156, 5168 and 5168TE)
REF	PART NO	QTY	DESCRIPTION
1	104-806	1	CamCline Weldment (5132)
	104-869	1	CamCline Weldment (5144, 5156, 5168 and 5168TE)
2	145-675	2	Hose Retainer
3	145-604	1	Chain Guard (5132)
	145-649	1	Chain Guard (5144, 5156, 5168 and 5168TE)
4	145-014	1	Plastic Floor (5132)
	145-347	1	Plastic Floor (5144, 5156, 5168 and 5168TE)
5	104-954*	1	Chain and Slat Assembly (5132)
	104-955*	1	Chain and Slat Assembly (5144, 5156, 5168 and 5168TE)
	105-097	A/R	Repair Chain and Slat
	171-288	A/R	Connector Link
	171-287	A/R	Offset Link

CamCline Discharge Base

6	145-605	1	Chain Guard (5132)
	145-653	1	Chain Guard (5144, 5156, 5168 and 5168TE)
7	104-810	1	Barrier Weldment (5132)
	104-874	1	Barrier Weldment (5144, 5156, 5168 and 5168TE)
8	145-648	1	Actuator Shield (5132)
	145-677	1	Actuator Shield (5144, 5156, 5168 and 5168TE)
9	104-936	1	Slide Cover Weldment
10	145-673	2	Rubber Chain Cleaner
11	143-555	1	Idler Shaft
12	141-216	2	Bushing; Plastic, 2-1/2" x 1" x 2-5/8"
13	141-220	2	Washer; Plastic, 1/8" x 4" x 1"
14	104-811	1	Side Barrier Weldment (5132)
	104-876	1	Side Barrier Weldment (5144, 5156, 5168 and 5168TE)
15	145-446**	1	Cylinder Mount
16	175-675**	2	Straight Adapter, 08OM x 06JM
17	175-673**	2	90° Adapter, 06JFS x 06JM
18	176-049**	1	Hydraulic Cylinder, 2" x 16" (Seal Kit #170-075, Pins #173-274, Clips #173-275)
19	145-682	1	End Enclosure - OPTIONAL (Non Current) (Replaces 2 x 145-673, Item #9)
20	147-137	1	End Enclosure - OPTIONAL (Current) (Replaces 145-682)
21	147-067***	1	Bracket
22	147-136***	1	Bracket
23	175-664***	2	Lynch Pin, .31 Diameter

*Connects with appropriate Chain & Slat Assembly from **CamCline Adjustable Discharge Extension** or **CamCline Flat Discharge Extension** pages to form one complete track.

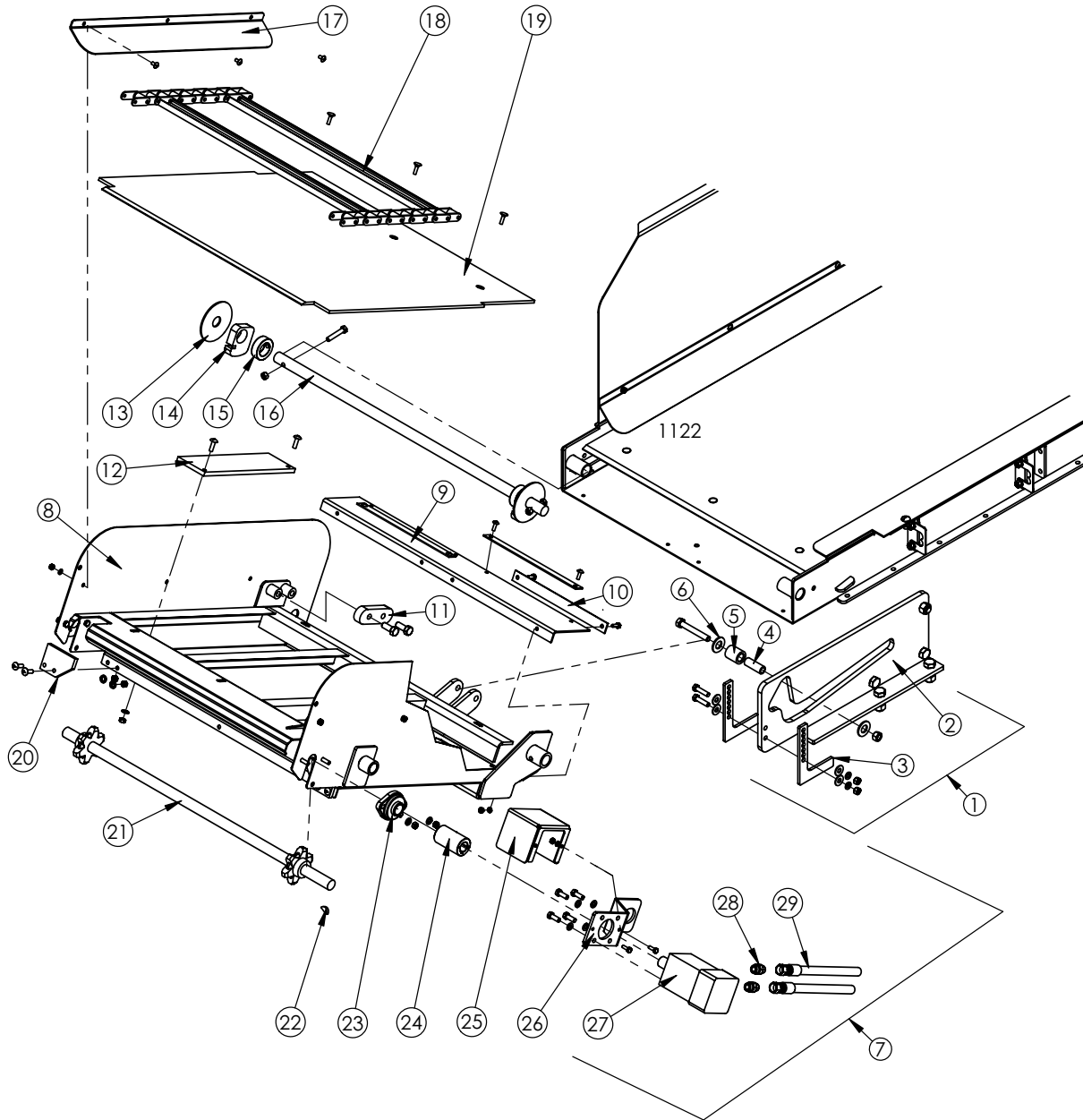
** Part of kit 104-990, shown on **CamCline Actuator and Slides** page.

*** Parts used for End Enclosure (Current) 147-137.

Mounting Hardware:

(2) 145-675 Hose Retainer	(7) 104-8810 Barrier Weldment	(14) 104-811 or 104-876 Side Barrier
170-439 2EA Hex Head Cap	170-054 10 Bolt, 3/8" x 1"	170-054 2 Bolt, 3/8" x 1"
Screw, 3/8" x 3/4"	170-006 10 Lock Washer, 3/8"	170-006 2 Lock Washer, 3/8"
170-006 2EA Lock Washer, 3/8"	170-007 10 Nut, 3/8"	170-007 2 Nut, 3/8"
170-007 2EA Nut, 3/8"		
(3) 145-604 or 145-649 Chain Guard	(7) 104-874 Barrier Weldment	(15) 145-446 Cylinder Mount
170-439 1 Hex Head Cap	170-054 12 Bolt, 3/8" x 1"	170-002 2 Bolt, 1/2" x 1-1/2"
Screw, 3/8" x 3/4"	170-006 12 Lock Washer, 3/8"	170-003 2 Lock Washer, 1-2"
170-006 1 Lock Washer, 3/8"	170-007 12 Nut, 3/8"	170-004 2 Nut, 1/2"
170-007 1 Nut, 3/8"		
(4) 145-014 or 145-347 Plastic Floor	(8) 145-648 Actuator Shield	(19) 145-682 End Enclosure
176-580 9 Joint Connector Bolt,	170-027 4 Bolt, 5/16" x 1"	170-117 4 Truss Head Bolt,
1/4"-20 x 1-3/16"	170-118 4 Lock Washer, 5/16"	5-16" x 1"
170-301 9 Flat Washer, 1/4"	170-119 4 Nut, 5/16"	170-118 4 Lock Washer, 5/16"
170-069 9 Lock Nut, 1/4"		170-119 4 Nut, 5/16"
	(8) 145-677 Actuator Shield	(21) 147-067 Bracket
	170-027 3 Bolt, 5/16" x 1"	170-117 2 Truss Head Bolt,
	170-118 3 Lock Washer, 5/16"	5-16" x 1"
	170-119 3 Nut, 5/16"	170-127 1 Flat Washer, 5/16"
(6) 145-605 Chain Guard	(10) 145-673 Rubber Chain Cleaner	170-118 2 Lock Washer, 5/16"
170-123 6 Truss Head Bolt,	170-117 2EA Truss Head Bolt,	170-119 2 Nut, 5/16"
1/4" x 1/2"	5/16" x 1"	(22) 147-136 Bracket
170-124 6 Lock Washer, 1/4"	170-118 2EA Lock Washer, 5/16"	170-117 2 Truss Head Bolt,
170-125 6 Nut, 1/4"	170-119 2EA Nut, 5/16"	5-16" x 1"
		170-118 2 Lock Washer, 5/16"
(6) 145-605 or 145-653 Chain Guard	(11) 143-555 Idler Shaft	170-119 2 Nut, 5/16"
170-123 7 Truss Head Screw,	170-593 2 Bolt, 3/8" x 5-1/2"	
1/4" x 1/2"	170-244 2 Flat Washer, 3/8"	
170-124 7 Lock Washer, 1/4"	170-069 2 Lock Nut, 3/8"	
170-125 7 Nut, 1/4"		

CamCline Adjustable Discharge Extension



Drawing depicts discharge to left side of unit. Items 20 through 27 are assembled on opposite side of extension on mixers configured for discharge to the right.

REF	PART NO	QTY	DESCRIPTION
1	104-984	1	CamCline Extension Track Assembly
2	105-023	1	CamCline Extension Track Weldment
3	145-467	2	Extension Position Brackets
4	145-638	1	Inner Bushing
5	104-983	1	Cam Bushing
6	145-639	2	Nylatron Spacer

Mounting Hardware:

(2) 105-023 CamCline Track Weldment	(3) 145-467 Extension Position Brackets	(4-6) 145-638, 104-983, 145-639 Cam Assy
170-030 5 Bolt, 5/8" x 1-3/4"	170-368 2 Bolt, 3/8" x 1-1/2"	173-111 1 Bolt, 1/2" x 4"
170-031 5 Lock Nut, 5/8"	170-244 4 Flat Washer, 3/8"	170-042 1 Lock Nut, 1/2"
	170-006 2 Lock Washer, 3/8"	
	170-007 2 Nut, 3/8"	

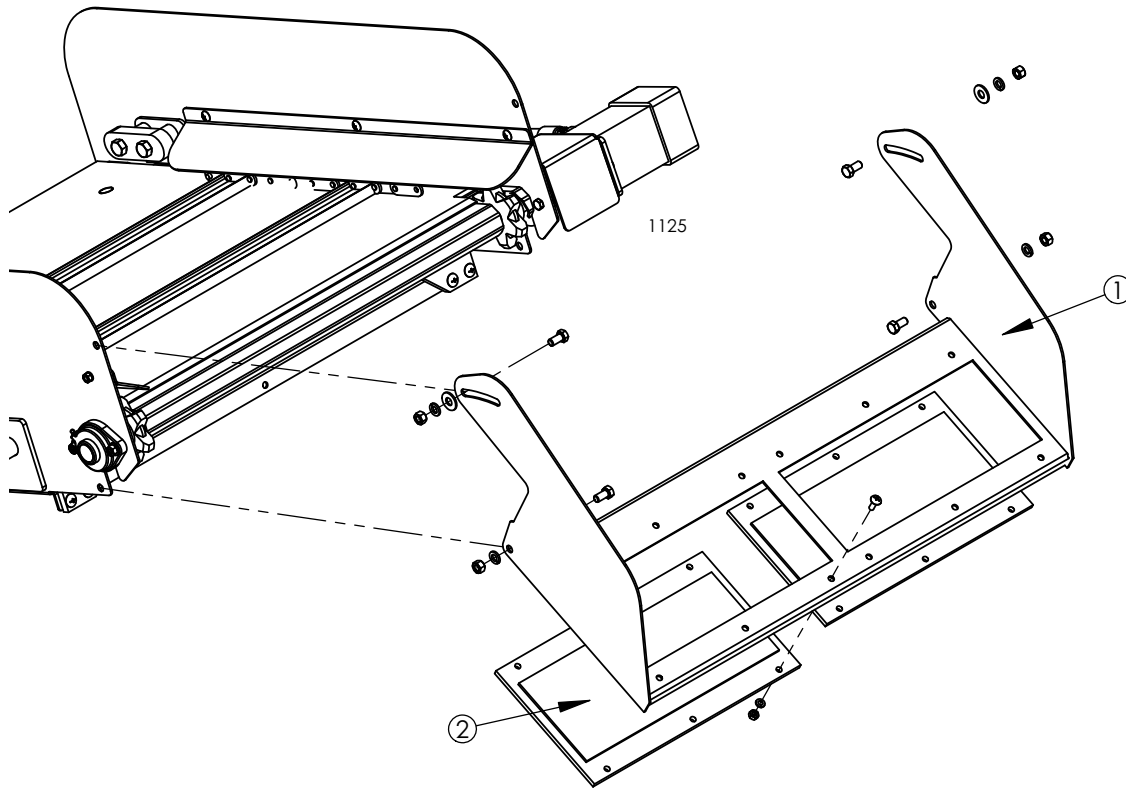
CamCline Adjustable Discharge Extension

REF	PART NO	QTY	DESCRIPTION
7	105-100	1	CamCline Extension Assembly - 24"
	104-964	1	CamCline Extension Assembly - 36"
	105-546	1	CamCline Extension Assembly - 48"
8	105-099	1	CamCline Extension Weldment - 24"
	104-807	1	CamCline Extension Weldment - 36"
	104-922	1	CamCline Extension Weldment - 48"
9	145-668	1	Rubber Belting
10	143-888	4	Retainer, Rubber Belting
11	143-518	2	Chain Retainer
12	145-868	2	Rubber Belt (24" Extension)
	145-683	2	Rubber Belt (36" Extension)
	145-684	2	Rubber Belt (48" Extension)
13	141-220	2	Plastic Washer (48" Extension Only)
14	143-576	2	Chain Guide
15	176-182	2	Lock Collar (Set Screw# 170-456)
16	144-073	1	Pivot Rod
17	145-866	1	Chain Cover (24" Extension)
	145-606	1	Chain Cover (36" Extension)
	145-672	1	Chain Cover (48" Extension)
18	105-098*	1	Chain & Slat Assembly (24" Extension)
	104-958*	1	Chain & Slat Assembly (36" Extension)
	104-959*	1	Chain & Slat Assembly (48" Extension)
	105-097	A/R	Repair Chain and Slat
	171-288	A/R	Connector Link
	171-287	A/R	Offset Link
19	145-867	1	Plastic Floor (24" Extension)
	145-015	1	Plastic Floor (36" Extension)
	145-471	1	Plastic Floor (48" Extension)
20	145-673	2	Rubber Chain Cleaner
21	104-400	1	Discharge Drive
22	170-120	1	Key, Woodruff, 1/4" x 7/8"
23	170-026	2	Flange Bearing, 1" Bore, 2 Bolt
24	176-181	1	Shaft Coupler, 1" Bore, 1-3/4" Length
25	145-271	1	Drive Shield
26	144-074	1	Motor Bracket
27	171-666	1	Hydraulic Motor, 12.0 Cu Inches, 4 Bolt
28	178-118	2	Adapter, 45, 100M x 08JM
29	176-784	2	Hydraulic Hose Assembly, 1/2" x 146", 08JFS x 08JFS (24" Extension)
	176-630	2	Hydraulic Hose Assembly, 1/2" x 158", 08JFS x 08JFS (36" Extension)
	176-625	2	Hydraulic Hose Assembly, 1/2" x 168", 08JFS x 08JFS (48" Extension)

*Connects with appropriate Chain & Slat Assy from **CamCline Discharge Base** page to form one complete track.

Mounting Hardware:		(15) 144-073 Pivot Rod	(19) 145-673 Rubber Chain Cleaner
(10) 143-888 Belting Retainer		170-245 2 Bolt, 3/8" x 2"	170-117 2EA Truss Head Bolt, 5/16" x 1"
170-193 2EA Truss Head Bolt, 1/4" x 3/4"		170-047 2 Lock Nut, 3/8"	170-118 2EA Lock Washer, 5/16"
170-124 2EA Lock Washer, 1/4"	(16) 145-606, 145-672 Chain Cover	170-123 3EA Truss Head Bolt, 1/4" x 1/2"	170-119 2EA Nut, 5/16"
170-125 2EA Nut, 1/4"		170-124 3EA Lock Washer, 1/4"	(22) 170-026 Flange Bearing
(11) 143-518 Chain Retainer		170-125 3EA Nut, 1/4"	170-027 2EA Bolt, 5/16" x 1"
170-373 2EA Bolt, 1/2" x 1-1/4"	(18) 145-015, 145-471 Plastic Floor		170-118 2EA Lock Washer, 5/16"
(12) 145-683 or 145-684 Rubber Belt			170-119 2EA Nut, 5/16"
170-117 2EA Truss Head Bolt, 5/16" x 1"	176-580 3EA Joint Connector Bolt 1/4"-20 x 1-3/16"	(25) 144-074 Motor Bracket	170-803 2EA Bolt, 1/4" x 3/4"
170-118 2EA Lock Washer, 5/16"	170-301 3EA Flat Washer, 1/4"		170-124 2EA Lock Washer, 1/4"
170-119 2EA Nut, 5/16"	170-069 3EA Lock Washer, 1/4"	(26) 171-666 Hydraulic Motor	170-125 2EA Nut, 1/4"
			170-054 4 Bolt, 3/8" x 1"
			170-006 4 Lock Washer, 3/8"

CamCline Adjustable Discharge Extension Tip-Off



REF	PART NO	QTY	DESCRIPTION
1	104-948	1	Tip-Off Weldment
2	171-937	2	Magnet

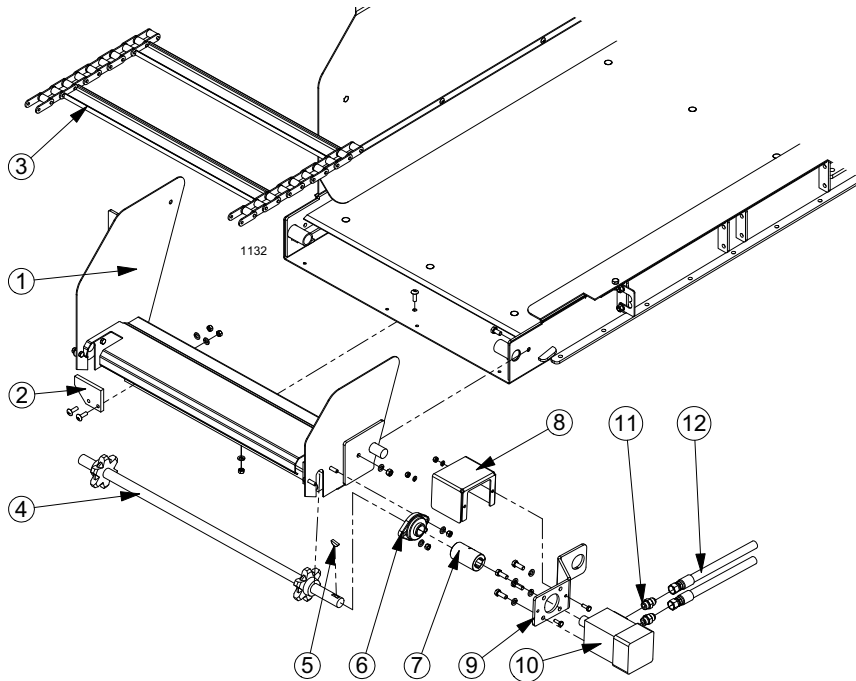
Mounting Hardware:

- (1) 104-948 Tip Off Weldment - Top
 - 170-439 2 Bolt, 3/8: x 3/4"
 - 170-244 2 Flat Washer, 3/8"
 - 170-006 2 Lock Washer, 3/8"
 - 170-007 2 Nut, 3/8"

- (2) 171-937 Magnet to Tip-Off
 - 170-193 6EA Truss Head Bolt, 1/4" x 3/4"
 - 170-124 6EA Lock Washer, 1/4"
 - 170-125 6EA Nut, 1/4"

- (1) 104-948 Tip Off Weldment - Bottom
 - 170-439 2 Bolt, 3/8: x 3/4"
 - 170-006 2 Lock Washer, 3/8"
 - 170-007 2 Nut, 3/8"

CamCline Flat Discharge Extension



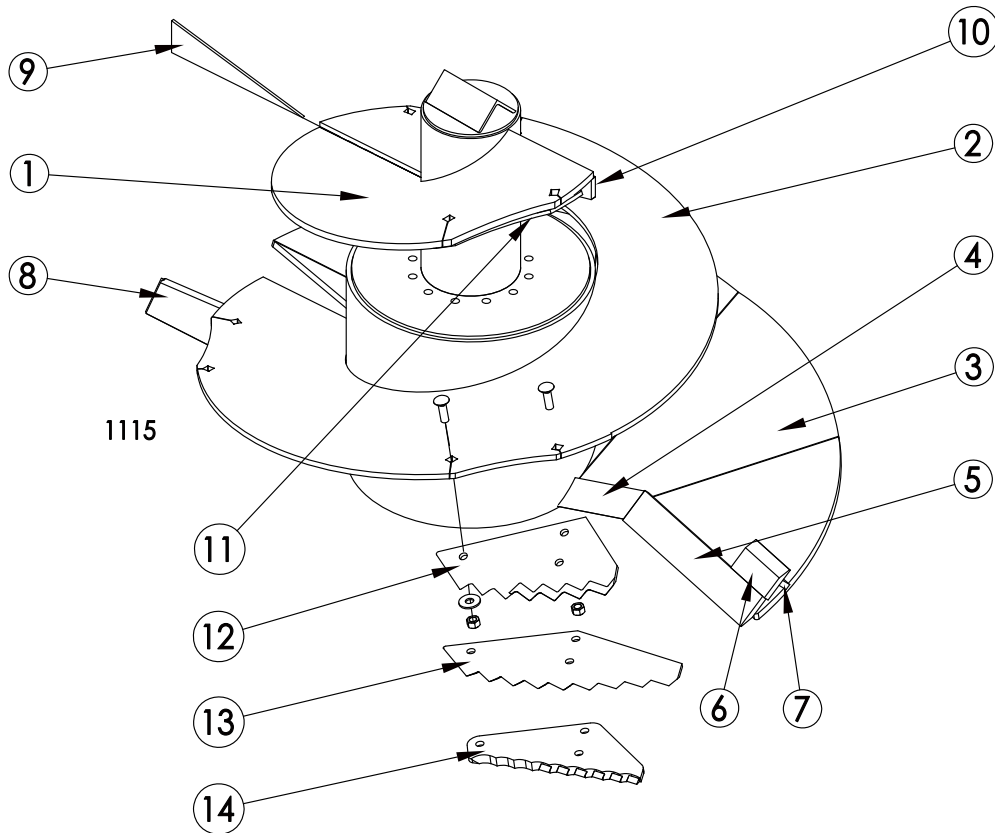
REF	PART NO	QTY	DESCRIPTION
	104-962	1	Flat Conveyor Extension Assembly (5132, 5144, 5156 and 5168TE)
	104-963	1	Flat Conveyor Extension Assembly (5168)
1	104-868	1	Flat Conveyor Extension Weldment (5132, 5144, 5156 and 5168TE)
	104-871	1	Flat Conveyor Extension Weldment (5168)
2	145-673	2	Rubber Chain Cleaner
3	104-956*	1	Chain & Slat Assembly (5132, 5144, 5156 and 5168TE)
	104-957*	1	Chain & Slat Assembly (5168)
	105-097	A/R	Repair Chain and Slat
	171-288	A/R	Connector Link
	171-287	A/R	Offset Link
4	104-400	1	Discharge Drive
5	170-120	1	Key, Woodruff, 1/4" x 7/8"
6	170-026	2	Flange Bearing, 1" Bore, 2 Bolt
7	176-181	1	Shaft Coupler, 1" Bore, 1-3/4" Length
8	145-271	1	Drive Shield
9	144-074	1	Motor Bracket
10	171-666	1	Hydraulic Motor, 12.0 Cu Inches, 4 Bolt
11	178-118	2	Adapter, 45, 10OM x 08JM
12	176-631	2	Hydraulic Hose Assembly, 1/2" x 132", 08JFS x 08JFS

*Connects with appropriate Chain & Slat Assy from **CamCline Discharge Base** page to form one complete track.

Mounting Hardware:

(1) 104-868 Flat Conveyor Extension to CamCline	(8) 145-271 Drive Shield
170-117 3 Truss Head Bolt, 5/16" x 1"	170-803 2 Bolt, 1/4" x 3/4"
170-118 3 Lock Washer, 5/16"	170-124 2 Lock Washer, 1/4"
170-119 3 Nut, 5/16"	170-125 2 Nut, 1/4"
(2) 145-673 Rubber Chain Cleaner to Extension	(10) 171-666 Hydraulic Motor
170-117 2EA Truss Head Bolt, 5/16" x 1"	170-054 4 Bolt, 3/8" x 1"
170-118 2EA Lock Washer, 5/16"	170-006 4 Lock Washer, 3/8"
170-119 2EA Nut, 5/16"	
(6) 170-026 Flange Bearing to Extension	
170-027 2EA Bolt, 5/16" x 1"	
170-118 2EA Lock Washer, 5/16"	
170-119 2EA Nut, 5/16"	

Auger Assembly - 5132



REF	PART NO	QTY	DESCRIPTION
	104-376	2	Complete Auger Assembly (less knives)
1	143-386	1	Top Flighting (weld on)
2	142-839	1	Middle Flighting (weld on)
3	142-837	1	Lower Flighting (weld on)
4	142-877	1	Filler Bar (weld on)
5	141-380	1	Leading Edge (weld on)
6	141-063	1	Auxiliary Kicker (weld on)
7	141-134	1	Auxiliary Kicker Brace (weld on)
8	143-124	1	Auger Kicker - Angle (weld on)
	143-125	1	Auger Kicker - Base (weld on)
	143-101	1	Auger Kicker - End Cap (weld on)
9	142-769	1	Flighting Transition (weld on)
10	143-388	1	Flighting Brace (weld on)
11	142-827	1	Knife Support (weld on)
12	141-114	3*	Knife, Serrated (Standard)
13	144-734	3*	Knife, Progressive (Optional)
14	144-198	3*	Knife, Serrated - Carbide Tip (Optional)

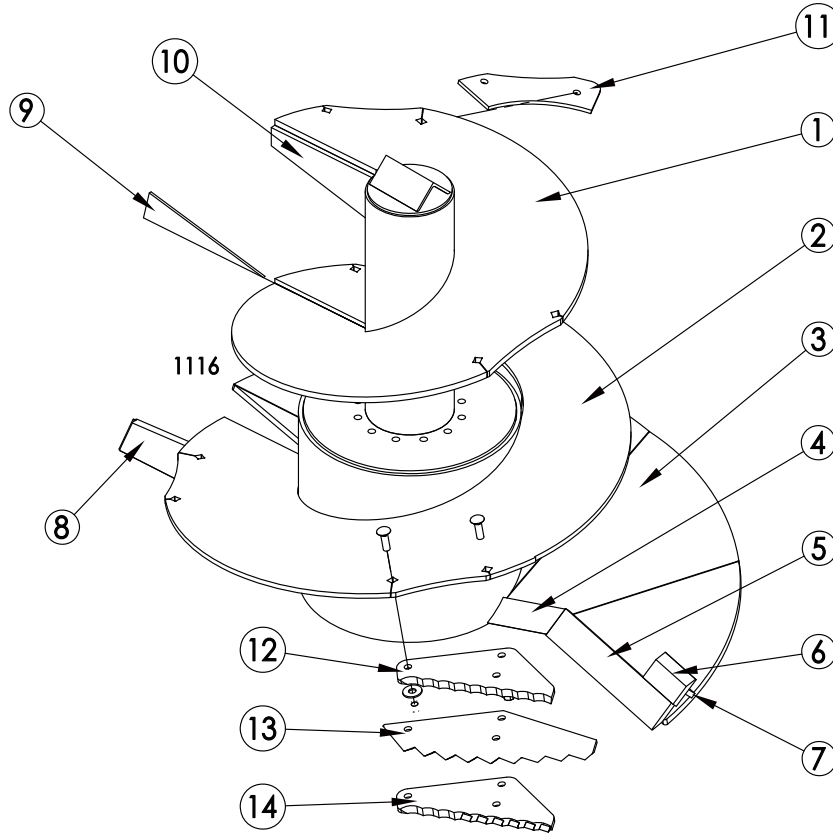
* A maximum of 4 knives can be installed on each auger.

Mounting Hardware:

104-376 Complete Auger Assembly to Planetary Gearbox
 175-634 12EA Bolt, M16X45MM
 170-010 12EA Lock Washer, 5/8"

(12, 13 or 14) 141-114, 144-734 or 144-198 Knives
 175-110 2EA Carriage Bolt, 5/8" x 2"
 170-066 2EA Flat Washer, 5/8"
 170-031 2EA Lock Nut, 5/8"

Auger Assembly - 5144



REF	PART NO	QTY	DESCRIPTION
	104-239	2	Complete Auger Assembly (less knives)
1	142-840	1	Top Flighting (weld on)
2	142-839	1	Middle Flighting (weld on)
3	142-837	1	Lower Flighting (weld on)
4	142-877	1	Filler Bar (weld on)
5	141-380	1	Leading Edge (weld on)
6	141-063	1	Auxiliary Kicker (weld on)
7	141-134	1	Auxiliary Kicker Brace (weld on)
8	143-124	1	Auger Kicker - Angle (weld on)
	143-125	1	Auger Kicker - Base (weld on)
	143-101	1	Auger Kicker - End Cap (weld on)
9	142-769	1	Flighting Transition (weld on)
10	141-062	1	Flighting Brace (weld on)
11	142-827	1	Knife Support (weld on)
12	141-114	3*	Knife, Serrated (Standard)
13	144-734	3*	Knife, Progressive (Optional)
14	144-198	3*	Knife, Serrated - Carbide Tip (Optional)

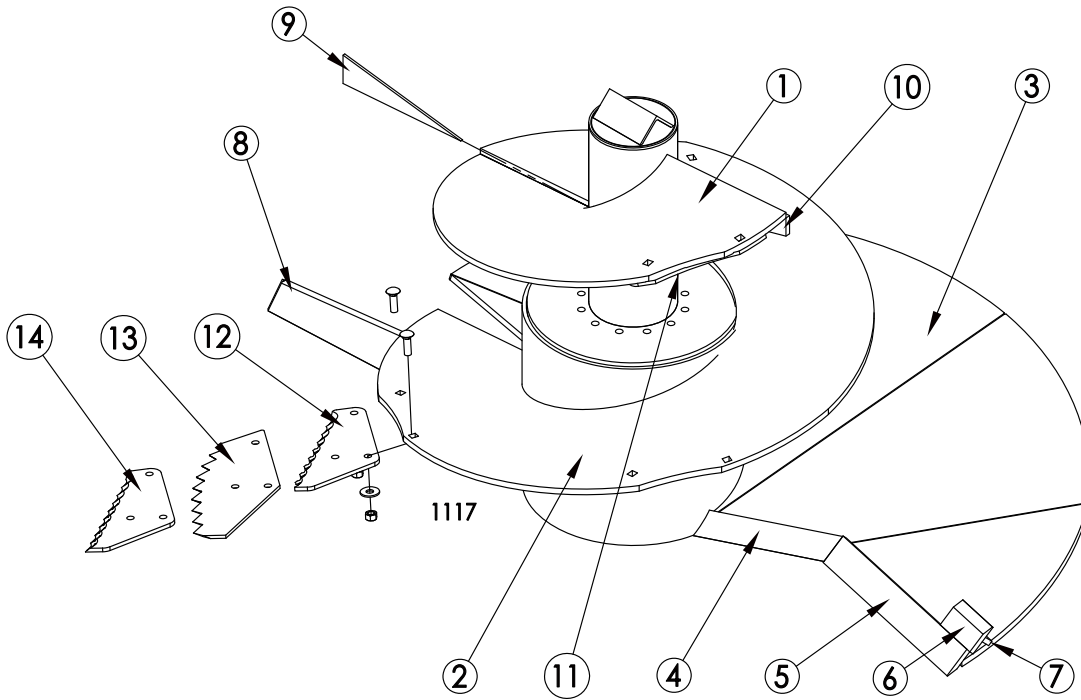
* A maximum of 6 knives can be installed on each auger.

Mounting Hardware:

104-239 Complete Auger Assembly to Planetary Gearbox
 175-634 12EA Bolt, M16X 45MM
 170-010 12EA Lock Washer, 5/8"

(12, 13 or 14) 141-114, 144-734 or 144-198 Knives
 175-110 2EA Carriage Bolt, 5/8" x 2"
 170-066 2EA Flat Washer, 5/8"
 170-031 2EA Lock Nut, 5/8"

Auger Assembly - 5156



REF	PART NO	QTY	DESCRIPTION
	104-286	2	Complete Auger Assembly (less knives)
1	142-709	1	Top Flighting (weld on)
2	142-706	1	Middle Flighting (weld on)
3	142-176	1	Lower Flighting (weld on)
4	141-065	1	Filler Bar (weld on)
5	142-181	1	Leading Edge (weld on)
6	141-063	1	Auxiliary Kicker (weld on)
7	141-134	1	Auxiliary Kicker Brace (weld on)
8	142-773	1	Auger Kicker - Angle (weld on)
	143-100	1	Auger Kicker - Base (weld on)
	143-101	1	Auger Kicker - End Cap (weld on)
9	142-769	1	Flighting Transition (weld on)
10	143-207	1	Flighting Brace (weld on)
11	142-827	1	Knife Support (weld on)
12	141-114	5*	Knife, Serrated (Standard)
13	144-734	5*	Knife, Progressive (Optional)
14	144-198	5*	Knife, Serrated - Carbide Tip (Optional)

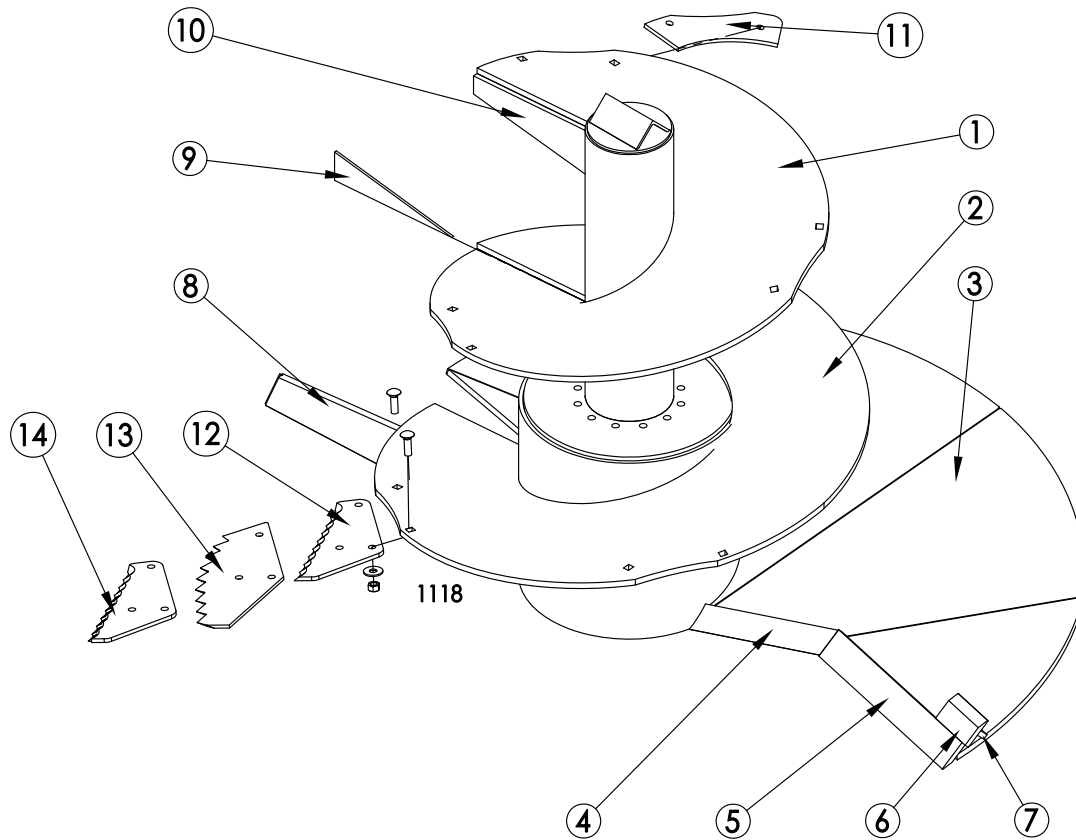
* A maximum of 5 knives can be installed on each auger.

Mounting Hardware:

104-286 Complete Auger Assembly to Planetary Gearbox
 175-634 12EA Bolt, M16X45MM
 170-010 12EA Lock Washer, 5/8"

(12, 13 or 14) 141-114, 144-734 or 144-198 Knives
 175-110 2EA Carriage Bolt, 5/8" x 2"
 170-066 2EA Flat Washer, 5/8"
 170-031 2EA Lock Nut, 5/8"

Auger Assembly - 5168 and 5168 TE



REF	PART NO	QTY	DESCRIPTION
	104-267	2	Complete Auger Assembly (less knives)
1	142-726	1	Top Flighting (weld on)
2	142-706	1	Middle Flighting (weld on)
3	142-176	1	Lower Flighting (weld on)
4	141-065	1	Filler Bar (weld on)
5	142-181	1	Leading Edge (weld on)
6	141-063	1	Auxiliary Kicker (weld on)
7	141-134	1	Auxiliary Kicker Brace (weld on)
8	142-773	1	Auger Kicker - Angle (weld on)
	143-100	1	Auger Kicker - Base (weld on)
	143-101	1	Auger Kicker - End Cap (weld on)
9	142-769	1	Flighting Transition (weld on)
10	143-207	1	Flighting Brace (weld on)
11	142-827	1	Knife Support (weld on)
12	141-114	5*	Knife, Serrated (Standard)
13	144-734	5*	Knife, Progressive (Optional)
14	144-198	5*	Knife, Serrated - Carbide Tip (Optional)

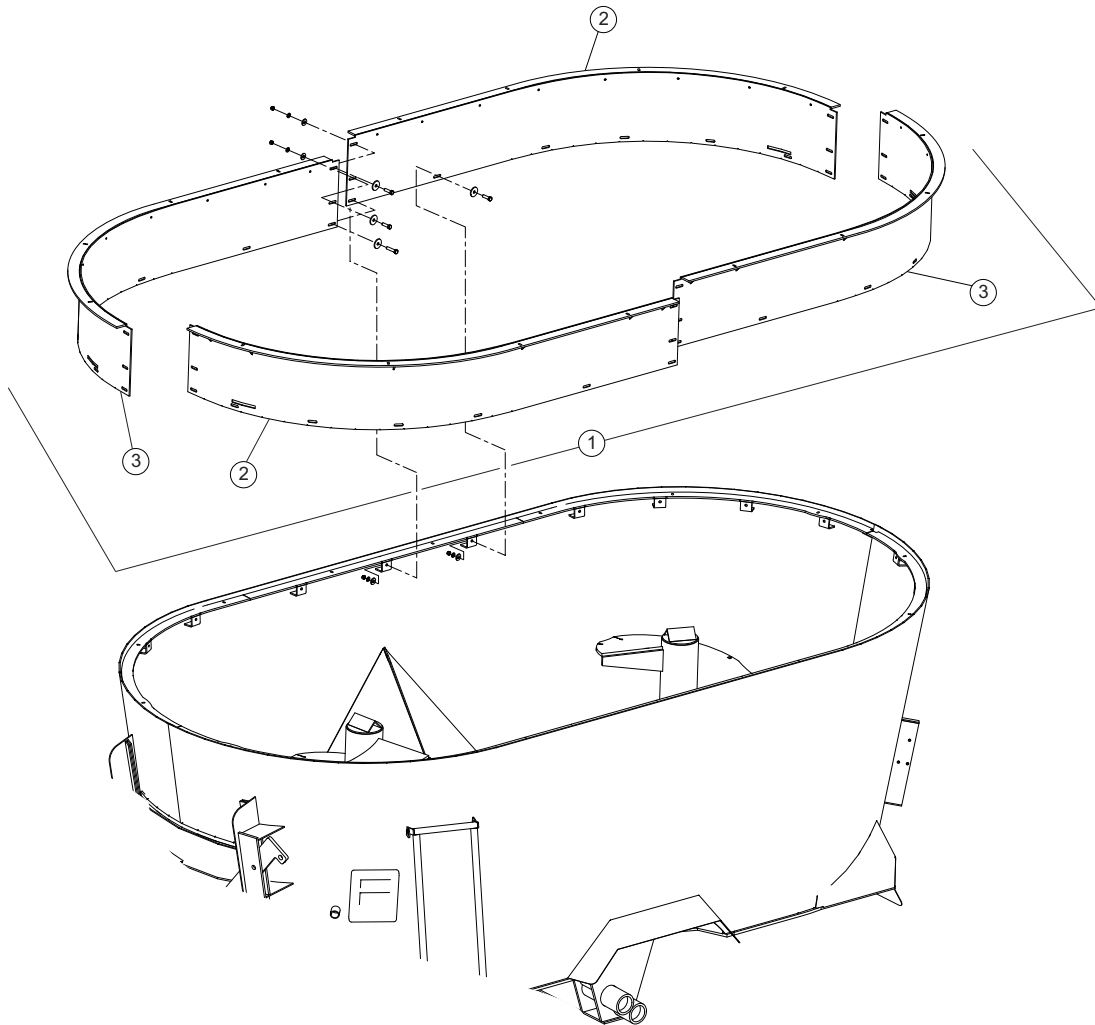
* A maximum of 7 knives can be installed on each auger.

Mounting Hardware:

104-267 Complete Auger Assembly to Planetary Gearbox
 175-634 12EA Bolt, M16X45MM
 170-010 12EA Lock Washer, 5/8"

(12, 13 or 14) 141-114, 144-734 or 144-198 Knives
 175-110 2EA Carriage Bolt, 5/8" x 2"
 170-066 2EA Flat Washer, 5/8"
 170-031 2EA Lock Nut, 5/8"

Top Extension 5168TE



REF	PART NO	QTY	DESCRIPTION
1	105-446	1	Top Extension Assy
2	105-444	2	Top Extension
3	105-445	2	Top Extension

Mounting Hardware:

(1) 105-446 Top Extension Assy (Bottom Hole on Seam) to Shell

170-368	4EA	Bolt, 3/8" x 1-1/2"
170-302	4EA	Flat Washer Heavy, 3/8"
170-244	4EA	Flat Washer, 3/8" USS
170-006	4EA	Lock Washer, 3/8"
170-007	4EA	Nut, 3/8"

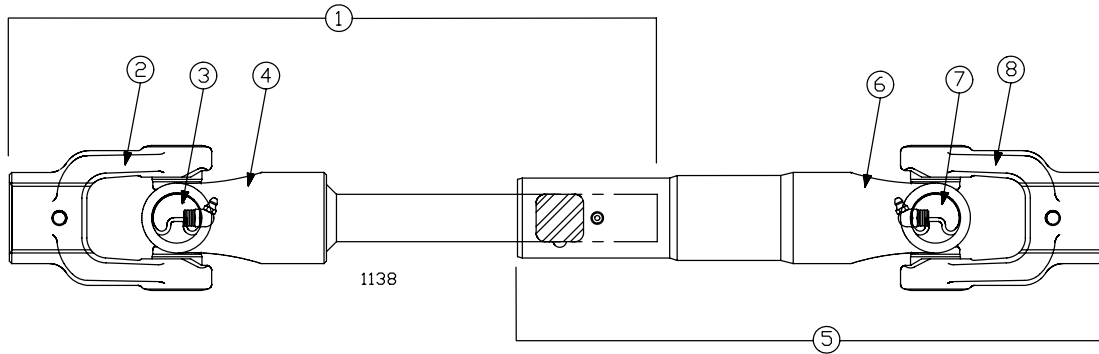
(1) 105-446 Top Extension Assy (None seam) to Shell

170-005	20EA	Bolt, 3/8" x 1-1/4"
170-302	20EA	Flat Washer Heavy, 3/8"
170-244	20EA	Flat Washer, 3/8" USS
170-006	20EA	Lock Washer, 3/8"
170-007	20EA	Nut, 3/8"

(2 and 3) 105-444 to 105-445 Top Two Holes on Seam

170-005	8EA	Bolt, 3/8" x 1-1/4"
170-302	8EA	Flat Washer Heavy, 3/8"
170-244	8EA	Flat Washer, 3/8" USS
170-006	8EA	Lock Washer, 3/8"
170-007	8EA	Nut, 3/8"

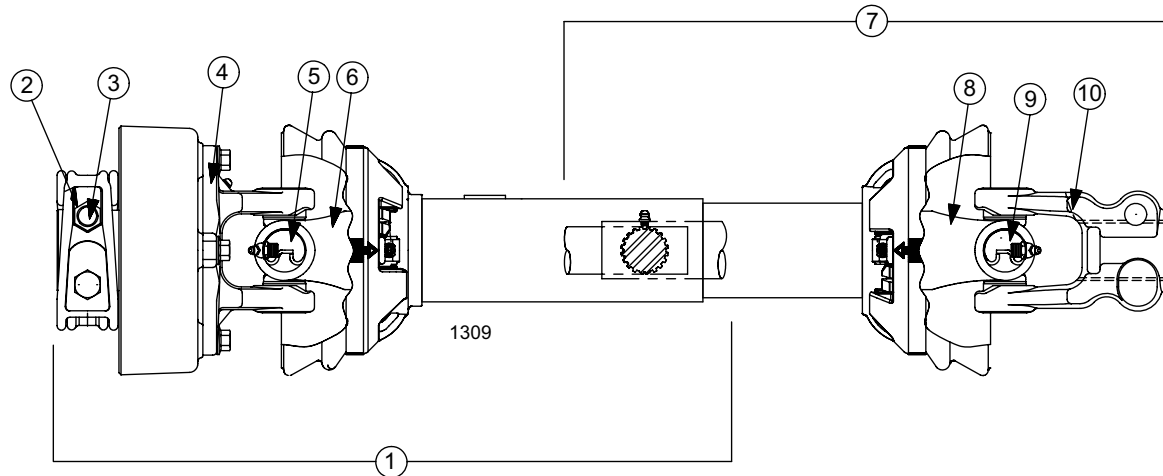
Driveline - 5132 and 5144 (Between Planetary Gearboxes)



This component may be supplied by multiple vendors; note the brand shown in the listing below when ordering replacement parts. Parts are not interchangeable between brands.

REF	PART NO	QTY	DESCRIPTION
	176-566	1	Driveline Assembly, 1-3/4" 20 Spline to 1-3/4" 20 Spline
1	176-539	1	Half Shaft - Weasler
2	176-538	1	Yoke, 1-3/4" 20 Spline
3	170-776	1	Cross and Bearing Kit
4	176-541	1	Yoke and Shaft, Square
5	176-540	1	Half Shaft - Weasler
6	176-542	1	Yoke, Tube and Slip Sleeve
7	170-776	1	Cross and Bearing Kit
8	176-538	1	Yoke, 1-3/4" 20 Spline

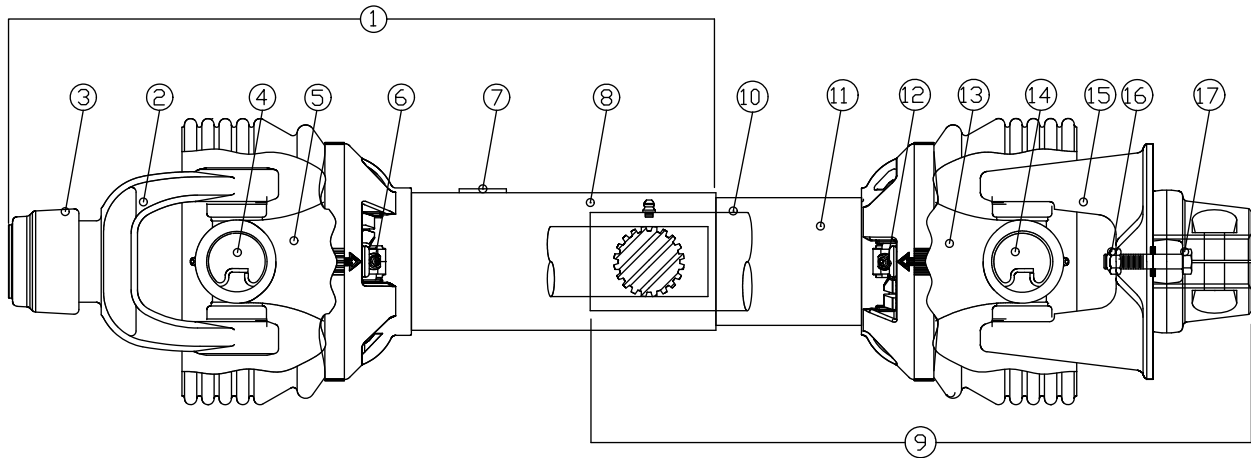
Driveline - 5156, 5168 and 5168TE (Between Planetary and 2:1 Gearboxes)



This component may be supplied by multiple vendors; note the brand shown in the listing below when ordering replacement parts. Parts are not interchangeable between brands.

REF	PART NO	QTY	DESCRIPTION
	177-130	2	Driveline Assembly, 1-3/4" 20 Spline to 1-3/4" 20 Spline
1	177-136	1	Half Shaft - Weasler
2	170-042	2	Lock Nut, 1/2"
3	172-950	2	Bolt, 1/2" x 3-1/2" GR8
4	177-138	1	Clutch Assembly
5	176-522	1	Cross and Bearing Kit
6	177-139	1	Yoke and Shaft, 1-5/16", 20 Spline
7	177-137	1	Half Shaft - Weasler
8	177-140	1	Yoke, Tube and Slip Sleeve
9	176-522	1	Cross and Bearing Kit
10	177-141	1	Yoke, 1-3/4" 20 Spline

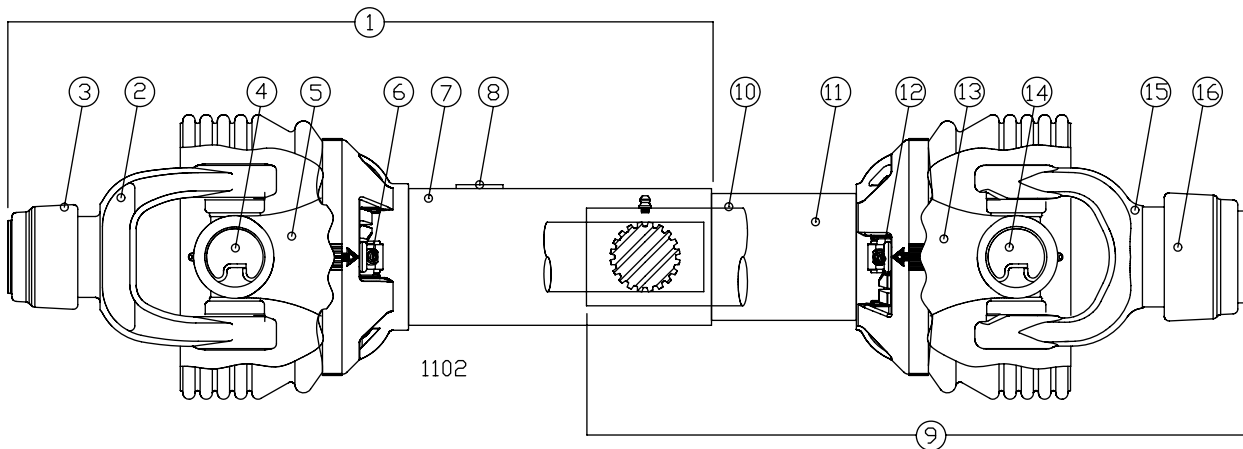
PTO Driveline - 5132 and 5144 (540 RPM - 6 Spline - 1-3/8" Yoke)



This component may be supplied by multiple vendors; note the brand shown in the listing below when ordering replacement parts. Parts are not interchangeable between brands.

REF	PART NO	QTY	DESCRIPTION
	176-563		Complete PTO Assembly
1	176-524	1	Half Shaft - Weasler
2	176-527	1	Yoke, 1-3/8" - 6 Spline
3	171-544	1	Collar Kit
4	176-522	1	Cross & Bearing Kit
5	176-528	1	Yoke & Shaft
6	176-526	1	Guard Repair Kit
7	171-550	1	Safety Decal
8	176-529	1	Outer Guard
9	176-525	1	Half Shaft - Weasler
10	176-530	1	Inner Guard
11	171-799	1	Safety Sign (hidden)
12	176-526	1	Guard Repair Kit
13	176-534	1	Yoke, Tube & Slip Sleeve
14	176-522	1	Cross & Bearing Kit
15	176-535	1	Overrunning Clutch Assembly
16	80200840	2	Lock Nut, M8
17	80060825	2	Bolt, M8x25

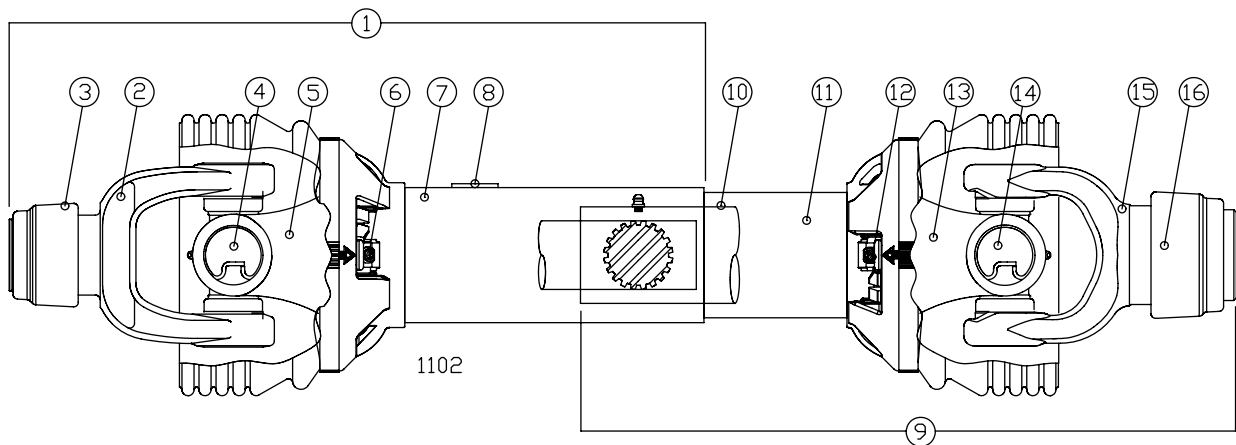
PTO Driveline - 5156, 5168 and 5168TE (1000 RPM - 20 Spline - 1-3/4" Yoke)



This component may be supplied by multiple vendors; note the brand shown in the listing below when ordering replacement parts. Parts are not interchangeable between brands.

REF	PART NO	QTY	DESCRIPTION
	176-565		Complete PTO Assembly, 1-3/8" 6 Spline to 1-3/4", 20 Spline
1	176-524	1	Half Shaft - Weasler
2	176-527	1	Yoke, 1-3/8" - 6 Spline
3	171-544	1	Collar Kit
4	176-522	1	Cross & Bearing Kit
5	176-528	1	Yoke & Shaft
6	176-526	1	Guard Repair Kit
7	176-529	1	Outer Guard
8	171-550	1	Safety Decal
9	176-571	1	Half Shaft - Weasler
10	176-530	1	Inner Guard
11	171-799	1	Safety Sign (hidden)
12	176-526	1	Guard Repair Kit
13	176-534	1	Yoke, Tube & Slip Sleeve
14	176-522	1	Cross & Bearing Kit
15	176-554	1	Yoke, 1-3/4" 20 Spline
16	172-496	1	Collar Kit

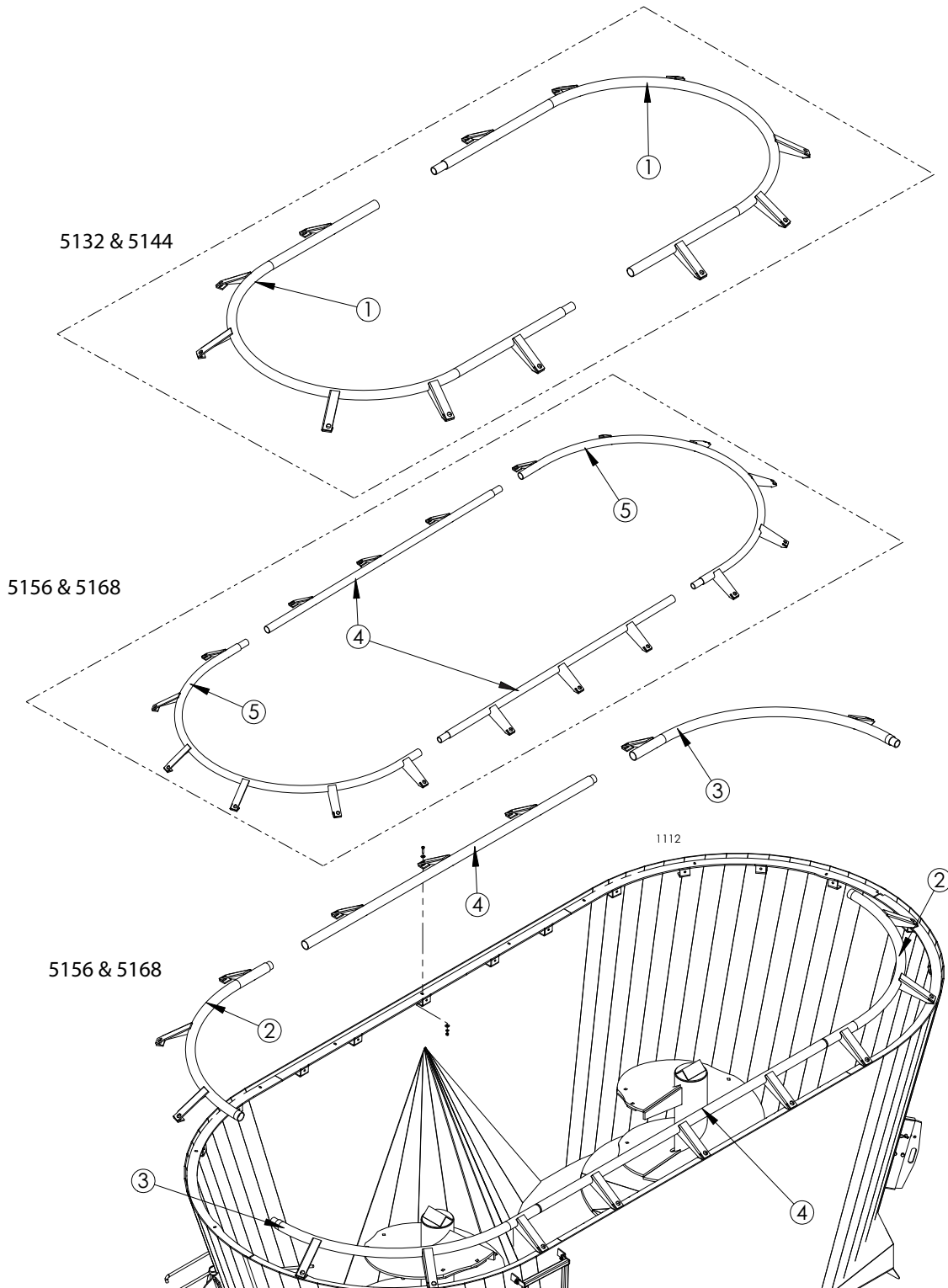
PTO Driveline - 5156, 5168 and 5168TE (1000 RPM - 21 Spline - 1-3/8" Yoke)



This component may be supplied by multiple vendors; note the brand shown in the listing below when ordering replacement parts. Parts are not interchangeable between brands.

REF	PART NO	QTY	DESCRIPTION
	176-564		Complete PTO Assembly
1	176-524	1	Half Shaft - Weasler
2	176-527	1	Yoke, 1-3/8" - 6 Spline
3	171-544	1	Collar Kit
4	176-522	1	Cross & Bearing Kit
5	176-528	1	Yoke & Shaft
6	176-526	1	Guard Repair Kit
7	176-529	1	Outer Guard
8	171-550	1	Safety Decal
9	176-537	1	Half Shaft - Weasler
10	176-530	1	Inner Guard
11	171-799	1	Safety Sign (hidden)
12	176-526	1	Guard Repair Kit
13	176-534	1	Yoke, Tube & Slip Sleeve
14	176-522	1	Cross & Bearing Kit
15	176-536	1	Yoke, 1-3/8" - 21 Spline
16	171-544	1	Collar Kit

Hay Retention - Optional



Hay Retention - Optional

REF	PART NO	QTY	DESCRIPTION
1	104-931	2	Hay Retention Weldment (5132)
	104-932	2	Hay Retention Weldment (5144)
2	104-459*	2	Hay Retention Weldment (5156 & 5168)
3	104-458*	2	Hay Retention Weldment (5156 & 5168)
4	104-497	2	Hay Retention Weldment (5156)
	104-495	2	Hay Retention Weldment (5168)
5	105-260**	2	Hay Retention Weldment (5156 & 5168)

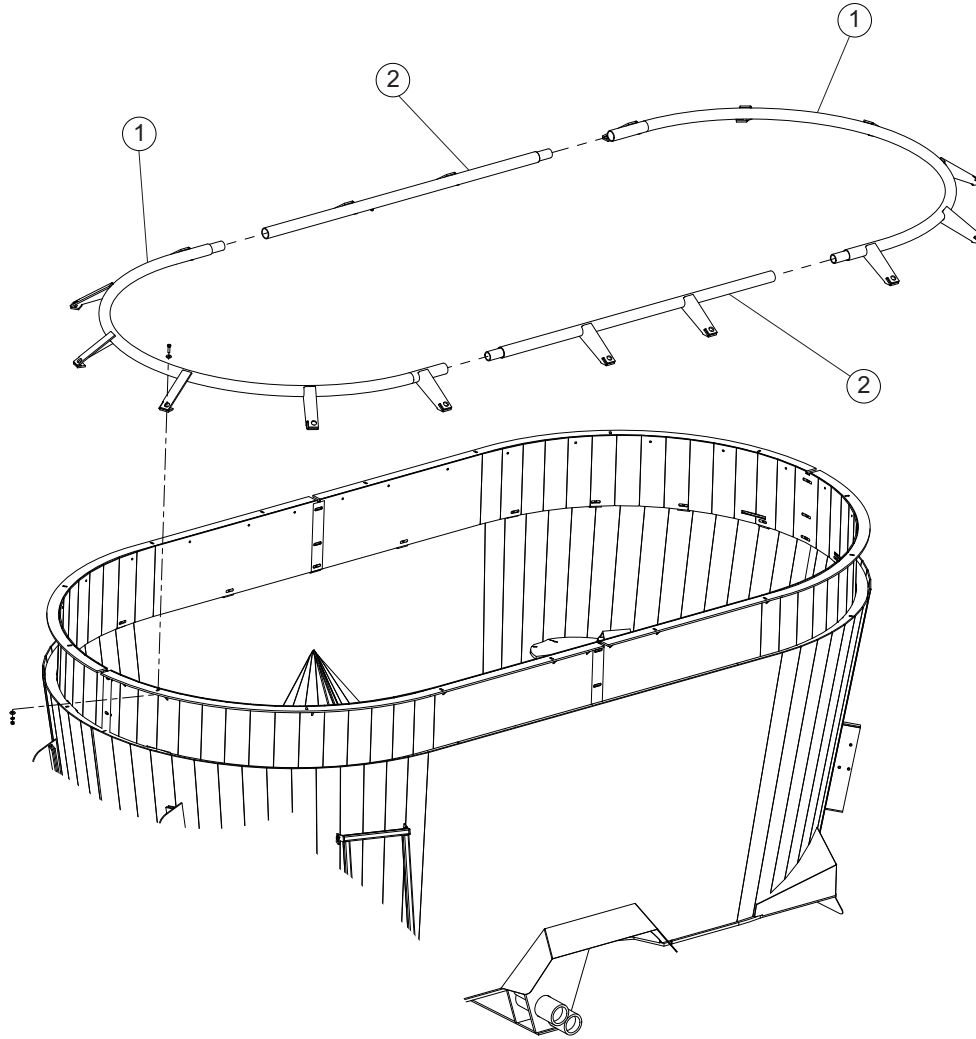
*Used before unit A0141 on model 5156 and used before unit A0069 on model 5168

**Used after unit A0141 on model 5156 and used after unit A0069 on model 5168

Mounting Hardware:

(1) 104-931 or 104-932 Hay Retention Weldment	(4) 104-495 Hay Retention Weldment (5168)
170-368 6EA Bolt, 3/8" x 1-1/2"	170-368 3EA Bolt, 3/8" x 1-1/2"
170-244 12EA Flat Washer, 3/8" USS	170-244 6EA Flat Washer, 3/8" USS
170-006 6EA Lock Washer, 3/8"	170-006 3EA Lock Washer, 3/8"
170-007 6EA Nut, 3/8"	170-007 3EA Nut, 3/8"
(2 or 3) 104-459 or 104-458 Hay Retention Weldment	(5) 105-260 Hay Retention Weldment (5156, 5168)
170-368 3EA Bolt, 3/8" x 1-1/2"	170-368 12EA Bolt, 3/8" x 1-1/2"
170-244 6EA Flat Washer, 3/8" USS	170-244 24EA Flat Washer, 3/8" USS
170-006 3EA Lock Washer, 3/8"	170-006 12EA Lock Washer, 3/8"
170-007 3EA Nut, 3/8"	170-007 12EA Nut, 3/8"
(4) 104-497 Hay Retention Weldment (5156)	
170-368 2EA Bolt, 3/8" x 1-1/2"	
170-244 4EA Flat Washer, 3/8" USS	
170-006 2EA Lock Washer, 3/8"	
170-007 2EA Nut, 3/8"	

Hay Retention 5168TE - Optional

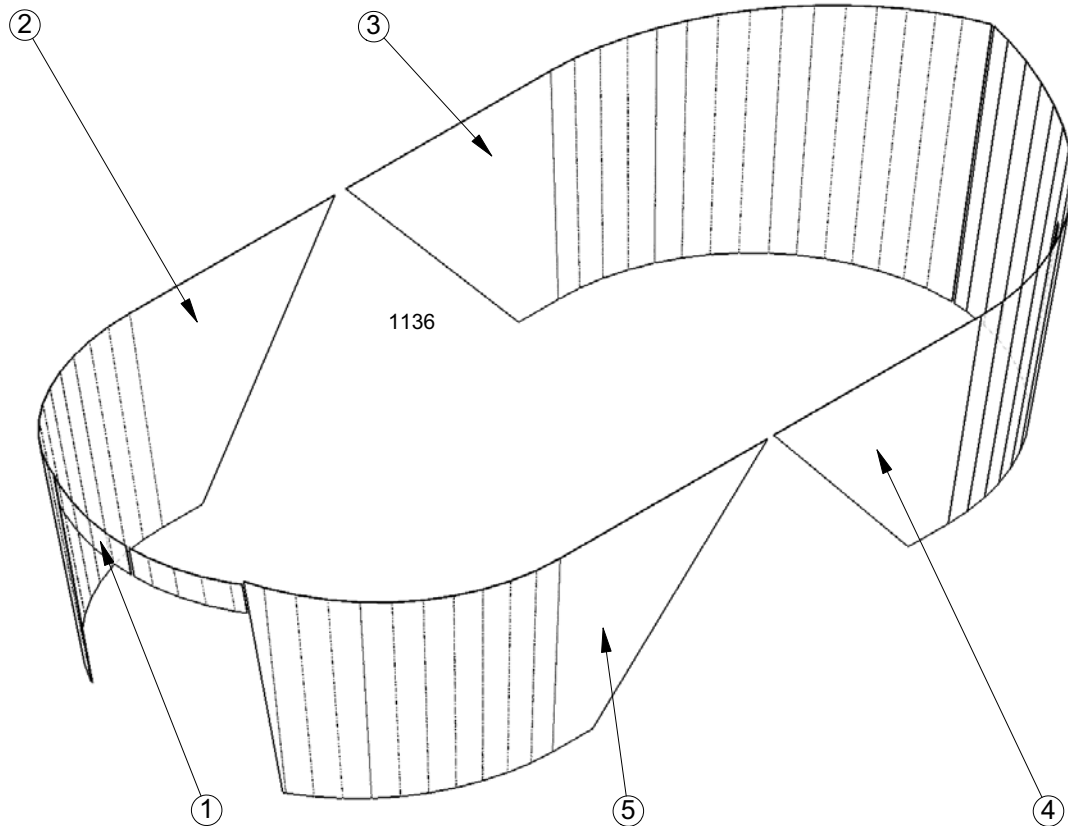


REF	PART NO	QTY	DESCRIPTION
1	105-260	2	Hay Retention Weldment
2	104-497	2	Hay Retention Weldment

Mounting Hardware:

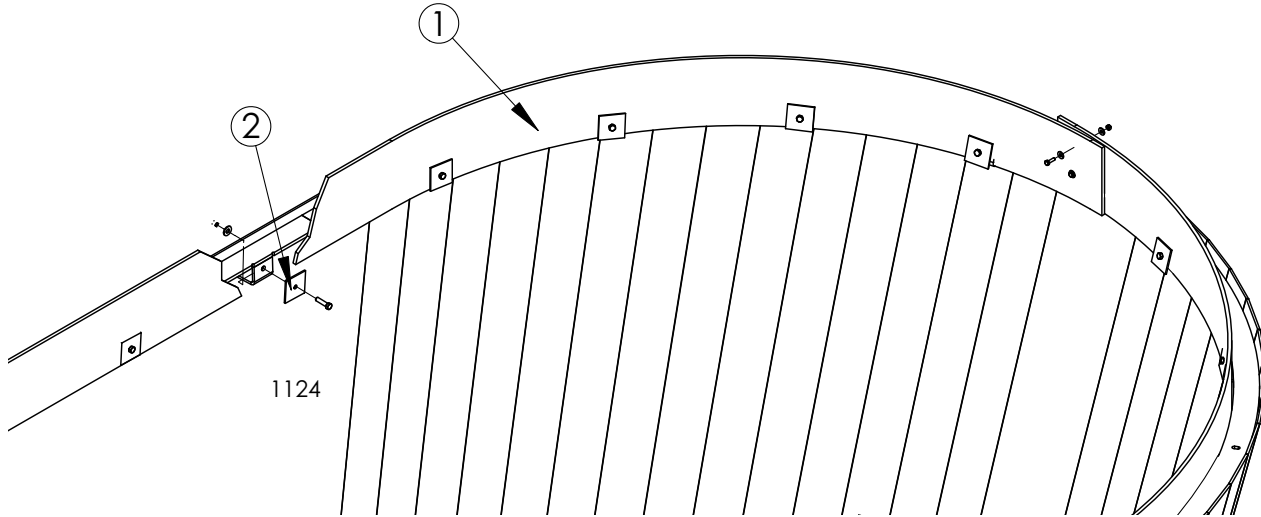
(1 and 2) 105-260 and 104-497 Hay Retention Weldment to Extension			
170-368	16EA	Bolt, 3/8" x 1-1/2"	
170-244	32EA	Flat Washer, 3/8" USS	
170-006	16EA	Lock Washer, 3/8"	
170-007	16EA	Nut, 3/8"	

Stainless Steel Liners 5156, 5168 and 5168TE - Optional



REF	PART NO	QTY	DESCRIPTION
1	145-512	2	Stainless Steel Liner - Center Front (5156 and 5168TE)
	145-519	2	Stainless Steel Liner - Center Front (5168)
2	145-510	1	Stainless Steel Liner - Right Front (5156 and 5168 TE)
	145-515	1	Stainless Steel Liner - Right Front (5168)
3	145-511	1	Stainless Steel Liner - Right Rear (5156 and 5168TE)
	145-516	1	Stainless Steel Liner - Right Rear (5168)
4	145-514	1	Stainless Steel Liner - Left Rear (5156 and 5168TE)
	145-518	1	Stainless Steel Liner - Left Rear (5168)
5	145-513	1	Stainless Steel Liner - Left Front (5156 and 5168TE)
	145-517	1	Stainless Steel Liner - Left Front (5168)

Side Extension - Optional

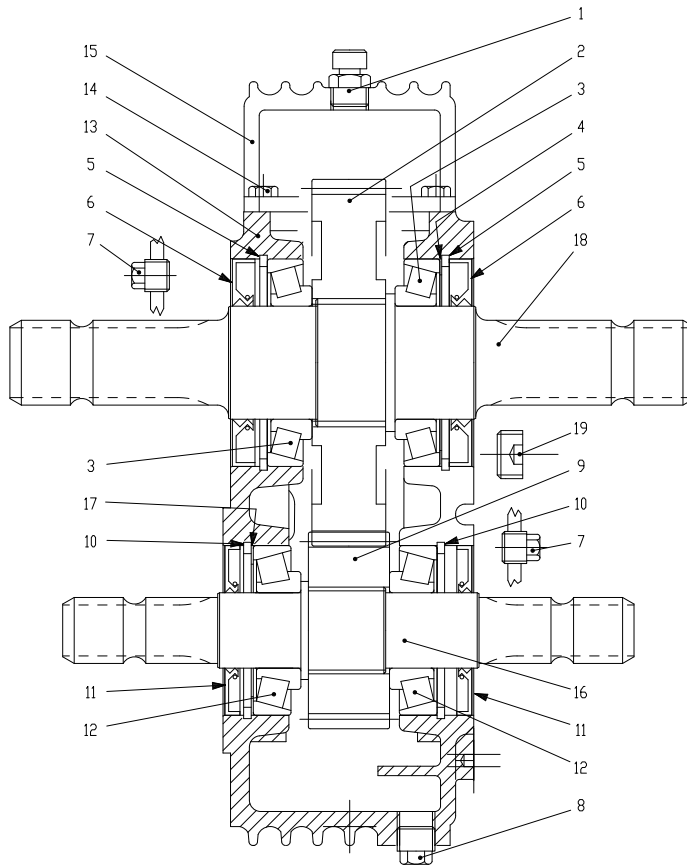


REF	PART NO	QTY	DESCRIPTION
1	181-043	33-2/3'	Rubber Belting (5132)
		35-1/2'	Rubber Belting (5144)
		40'	Rubber Belting (5156 and 5168TE)
		45-1/2'	Rubber Belting (5168)
2	143-408	20	Belting Retainer (5132)
		20	Belting Retainer (5144)
		22	Belting Retainer (5156 and 5168TE)
		26	Belting Retainer (5168)

Mounting Hardware:

(1) 181-043 Rubber Belting - Ends			
170-372	2	Bolt, 5/16" x 1-1/2"	
170-127	4	Washer, 5/16"	
172-981	2	Lock Nut, 5/16"	
(2) 143-408 Belting Retainer			
170-368	1EA	Bolt, 3/8" x 1-1/2"	
170-244	1EA	Flat Washer, 3/8"	
170-047	1EA	Lock Nut, 3/8"	

2:1 Gearbox Parts



REF	PART NO	QTY	DESCRIPTION
	176-146	1	Gearcase Assembly, 2.00:1
1	176-189	1	Oil Filler Plug; 1/2" Gas
2	175-747	1	Crown Wheel; Z51 M3.5
3	175-748	2	Bearing; 30212
4	175-749	1	Shim; 93.2X109.7
5	175-750	2	Snap Ring; 110UNI7437
6	175-751	2	Double Lip Seal; Viton 60x110x12
7	173-343	2	Plug; 3/8" Gas
8	174-904	1	Plug; 1/2" Gas
9	175-754	1	Pinion; Z26 M3.5
10	175-755	2	Snap Ring; 90 UNI7438
11	175-756	2	Double Lip Seal; VITON 40X90X8/7
12	174-896	2	Bearing; 30308
13	175-758	1	Casing
14	175-759	8	Bolt; M8X22 8,8
15	175-760	1	Cover
16	176-190	1	Shaft; 1"3/8 Z21
17	175-187	1	Shim; 89.7
18	176-191	1	Shaft; 1"3/4 Z20

Decal and Paint List

The following decals are listed below for your convenience.

Use the operator's manual for decal location and part number ordering.

PART NO	QTY	DESCRIPTION
177-678	1	Complete Decal Set (5132)
177-679	1	Complete Decal Set (5144)
177-680	1	Complete Decal Set (5156)
177-681	1	Complete Decal Set (5168)
170-490	1	Info, Reduce Engine RPM
170-849	2	WARNING, Stay Clear of Power Driven Parts...
170-893	1	SMV Symbol
171-712	1	Info, Retighten Setscrews...
171-820	2	DANGER, Rotating Auger Hazard
171-911	1	WARNING, To Prevent Serious Injury or Death
171-913	1	WARNING, To Prevent Serious Injury or Death
171-947	2	DANGER, Rotating Auger Hazard
172-786	1	WARNING, Rotating Parts Hazard
172-820	1	WARNING, Lifting Hazard
173-040	1	WARNING, To Prevent Serious Injury or Death
173-041	1	Info, Shearbolt Clutch
173-078	1	WARNING, Rotating Parts Hazard
174-686	4	Reflective Strip, Red
174-687	2	Reflective Strip, Amber
174-792	1	Info, Mixer Operation
174-872	2	CAUTION, Spindle Weigh
174-924	1	Info, Lift Points
175-151	1	Info, Notice, Failure To Use Kuhn-Knight Knives...
175-230	1	Patent, Verticals
177-365	1	Kuhn Knight, LH
177-366	1	Kuhn Knight, RH
175-919	2	Oil Level
176-001	1	Oil Tag
177-491	2	Verit-Maxx Logo
177-406	2	Model Number "5132"
177-407	2	Model Number "5144"
177-408	2	Model Number "5156"
177-409	2	Model Number "5168"
PTO Driveline Decals:		
171-550	1	DANGER - Rotating Driveline
171-799	1	DANGER - Shield Missing
Non Wave Decal Set		
176-661	1	Complete Decal Set (5132)
176-662	1	Complete Decal Set (5144)
176-663	1	Complete Decal Set (5156)
176-664	1	Complete Decal Set (5168)
Paint:		
175-589	1	Vermillion Red - Aerosol Can
175-590	1	Vermillion Red - Quart Can
175-588	1	Vermillion Red - Gallon Can
76003720	1	Silver - Aerosol Can

Hardware Part Number Listing

All fasteners are NC thread, Grade 5 unless otherwise specified.

HEX HEAD BOLTS

Size	Part No	1/2 x 1-1/2 (Grade 8)	172-951	3/4 x 7-1/2	175-004
1/4 x 1/2	173-279	1/2 x 1-3/4	171-774	3/4 x 8	173-509
1/4 x 3/4	170-803	1/2 x 2	171-802	7/8 x 2-1/4	172-892
1/4 x 7/8	171-094	1/2 x 2-1/4	172-387	7/8 X 2-1/2	175-633
1/4 x 1	170-310	1/2 x 2-1/2	170-885	7/8 x 3	172-002
1/4 x 1-1/2	170-068	1/2 x 2-1/2 (Full thread)	171-099	7/8 x 3-1/2	173-020
1/4 x 2	172-986	1/2 x 2-3/4	172-007	7/8 x 4	173-299
1/4 x 2 (Grade 8)	175-073	1/2 x 3	170-168	7/8 x 4-1/2	175-953
1/4 x 2-3/4	171-203	1/2 x 3-1/2	170-167	7/8 x 4 UNF	171-092
1/4 x 3	171-403	1/2 x 3-1/2 (Grade 8)	172-950	7/8 x 6-1/2	173-774
1/4 x 3-1/2	173-640	1/2 x 4	173-111	7/8 x 7	173-749
1/4 x 4	173-505	1/2 x 4 (Full thread)	171-509	7/8 x 7 UNF	174-097
5/16 x 5/8	170-532	1/2 x 4-1/2	175-920	7/8 x 8	173-750
5/16 x 3/4	170-262	1/2 x 4-1/2 (Grade 8)	171-573	7/8 x 8 UNF	173-515
5/16 x 3/4 (Stainless steel)	174-787	1/2 x 5	171-412	1 x 3-1/2	173-021
5/16 x 7/8	170-256	1/2 x 6	173-506	1 x 4	175-119
5/16 x 1	170-027	1/2 x 6 (Grade 8)	174-944	1 x 4 (Grade 8)	175-248
5/16 x 1-1/4 (Full thread)	170-188	1/2 x 6-1/2	173-711	1 x 7 UNF	173-516
5/16 x 1-1/2	170-372	1/2 x 7	174-328	1 x 8	174-723
5/16 x 1-3/4	170-263	1/2 x 7-1/2	175-107	1 x 8 (grade 8) UNF	173-713
5/16 x 2	172-987	1/2 x 8-1/2	170-504	1-1/4 x 4-1/2 (grade 8)	175-003
5/16 x 2-1/2	170-369	1/2 x 11	170-506	M8 x 16MM (Grade 8.8)	174-610
5/16 x 3	170-295	9/16 x 1	173-699	M8 x 20MM (Grade 8.8)	175-193
5/16 x 3-1/4	171-639	9/16 x 1-1/4	173-700	M8 x 25MM (Grade 8.8)	174-900
5/16 x 3-1/2	173-748	9/16 x 1-1/2	173-701	M10 x 22MM (Grade 8.8)	175-016
5/16 x 4	170-293	9/16 x 2	172-219	M10 x 25MM (Grade 8.8)	173-344
5/16 x 4-1/2	170-294	5/8 x 1	171-087	M12 x 25MM (Grade 8.8)	171-566
5/16 x 5 (Grade 8)	172-983	5/8 x 1-1/4	171-366	M12 x 35MM (Grade 8.8)	175-020
5/16 x 5-1/2 (Grade 8)	172-952	5/8 x 1-1/2	170-153	M12 x 40MM (Grade 12.9)	175-190
3/8 x 3/4	170-439	5/8 x 1-3/4 (Full thread)	170-030	M12 x 45MM (Grade 10.9)	174-911
3/8 x 3/4 (Stainless steel)	174-788	5/8 x 2	170-009	M14 x 30MM (Grade 8.8)	173-518
3/8 x 7/8	170-268	5/8 x 2 (Full thread)	171-772	M16 x 40MM (Grade 8.8)	175-631
3/8 x 1	170-054	5/8 x 2-1/4	173-009	M16 x 44MM (Grade 8.8)	175-634
3/8 x 1-1/4	170-005	5/8 x 2-1/2	172-381	SOCKET HEAD CAP SCREW	
3/8 x 1-1/4 (Stainless steel)	174-917	5/8 x 2-1/2 (Full thread)	170-129	3/8 x 7/8	172-044
3/8 x 1-1/2	170-368	5/8 x 2-3/4	172-356	1/2 x 2	175-232
3/8 x 1-3/4	172-383	5/8 x 3	170-258	1/2 x 2-1/2	175-921
3/8 x 2	170-245	5/8 x 3-1/2	170-038	SELF TAPPING SCREW	
3/8 x 2-1/4	170-320	5/8 x 4	170-371	1/4 x 3/4	174-874
3/8 x 2-1/2	170-257	5/8 x 4-1/2	170-067	CARRIAGE BOLTS	
3/8 x 2-1/2 (Full thread)	170-128	5/8 x 5	170-065	1/4 x 1-1/4 (Grade 2)	170-311
3/8 x 2-1/2 (Lag)	171-775	5/8 x 5-1/2	172-421	1/4 x 1-1/2 (Grade 2)	170-355
3/8 x 3	170-380	5/8 x 6	170-381	1/4 x 2 (Grade 2)	170-299
3/8 x 3-1/2	170-292	5/8 x 6-1/2	173-777	1/4 x 2-1/2 (Grade 2)	171-394
3/8 x 4	170-877	5/8 x 7-1/2	173-019	1/4 x 2-3/4 (Grade 2)	170-508
3/8 x 4-1/4 (Black oxide)	171-813	5/8 x 9-1/2	171-039	1/4 x 3	170-509
3/8 x 4-1/2	170-519	3/4 x 1-1/2	173-507	5/16 x 1 (Grade 2)	170-370
3/8 x 5	170-493	3/4 x 2	171-768	5/16 x 1-1/4	175-715
3/8 x 5-1/2	174-196	3/4 x 2 (Full thread)	170-058	5/16 x 1-1/2 (Grade 2)	170-296
3/8 x 5-1/2 (Full thread)	170-593	3/4 x 2 (Grade 8)	171-877	5/16 x 2-1/2 (Grade 2)	171-395
3/8 x 6	174-304	3/4 x 2-1/4	171-275	5/16 x 5-1/2 (Grade 2)	170-494
3/8 x 6-1/2	171-291	3/4 x 2-1/2	170-374	3/8 x 1	176-170
3/8 x 7	172-587	3/4 x 2-1/2 (Grade 8)	175-055	3/8 x 1 Short Neck	175-970
7/16 x 3/4	170-265	3/4 x 3	170-014	3/8 x 3-1/2 (Grade 2)	171-283
7/16 x 1	170-032	3/4 x 3 UNF	173-776	3/8 x 4-1/2 (Grade 2)	170-191
7/16 x 1-1/4	170-354	3/4 x 3-1/2	170-195	3/8 x 5 (Grade 2)	170-495
7/16 x 1-1/4 (Grade 8)	174-216	3/4 x 3-1/2 (Grade 8)	171-899	3/8 x 6-1/2 (Grade 2)	171-174
7/16 x 1-1/2	170-059	3/4 x 4	170-419	3/8 x 8 (Grade 2)	170-297
7/16 x 2	170-356	3/4 x 4 (Grade 8) UNF	173-579	3/8 x 13 (Grade 2)	170-298
7/16 x 2-1/2	170-379	3/4 x 4-1/2	170-846	3/8 x 13-1/2 (Grade 2)	170-300
7/16 x 3	170-270	3/4 x 4-1/2 (Grade 8)	173-039	1/2 x 1-1/2 (Grade 5)	174-918
7/16 x 5-1/2	170-377	3/4 x 4-1/2 (Grade 8) UNF	173-588	1/2 x 3	176-169
7/16 x 6	170-378	3/4 x 5	173-508	1/2 x 6-1/2 (Grade 2)	171-098
1/2 x 3/4	171-252	3/4 x 5 UNF	173-510	1/2 x 9 (Grade 2)	171-255
1/2 x 1	170-149	3/4 x 5-1/2 (Grade 8) UNF	173-514		
1/2 x 1-1/4	170-373	3/4 x 6	171-116		
1/2 x 1-1/2	170-002	3/4 x 6 UNF	173-511		
		3/4 x 6 (Grade 8)	173-231		

Kuhn North America Inc.

1501 West 7th Ave., Brodhead, WI 53520

47

Hardware Part Number Listing

5/8 x 2	175-110	M50 x 1.5MM	175-200	7/8	172-003
5/8 x 2-1/2 (Grade 5)	174-790	LOCK NUTS		1	171-021
PLOW BOLTS		#6-32	174-188	1-1/4	175-005
5/8 x 2	174-767	#10-32	174-073	ZERKS	
3/4 x 2-1/2	174-948	1/4	170-069	1/8 NPT	170-865
TRUSS HEAD BOLTS		5/16 flange lock	170-028	1/8 NPT-45 Deg	170-864
#6-32 x 3/4	172-416	3/8	170-047	1/8 NPT-65 Deg	170-215
#6-32 x 1	173-079	3/8 flange lock	176-246	1/8 NPT-90 Deg	170-866
#8-32 x 1-1/2	171-210	7/16	170-239	3/16 drive in	174-124
#8 x 3/4	174-192	1/2	170-042	1/4-28	170-023
#10-32 x 3/4	171-604	1/2 UNF	170-566	1/4-28 - 45 Deg	170-148
#10-32 x 1	172-882	1/2 (Grade 8)	171-671	1/4-28 - 90 Deg	170-049
1/4 x 3/4	170-193	9/16	172-220	1/4 NPT	170-277
1/4 x 1	170-194	5/8	170-031	1/4 NPT - 45 Deg	174-130
5/16 x 1	170-117	3/4	170-185	COTTER PINS	
SET SCREWS (Socket Head)(Cup Point)		3/4 (Grade 8)	171-900	1/16 x 1/2	170-992
1/4 x 1/4	170-247	3/4 (Grade 8) UNF	173-578	3/32 x 3/4	170-364
1/4 x 5/8	172-985	7/8	173-069	1/8 x 1	170-045
5/16 x 1/4	170-993	7/8 UNF	171-093	1/8 x 1-1/4	170-033
5/16 x 5/16	170-248	1	174-928	1/8 x 1-1/2	170-382
5/16 x 5/16 UNF	170-825	1 UNF	170-527	5/32 x 1	170-421
5/16 x 3/8 UNF	173-367	M45 x 1.5MM	175-199	5/32 x 1-1/2	170-236
5/16 x 1/2	170-254	M50 x 1.5MM	175-197	5/32 x 3	170-135
5/16 x 5/8 UNF	170-456	JAM NUTS		3/16 x 1-1/4	170-991
5/16 x 1 (Sq hd)	173-610	1/4UNF	171-386	3/16 x 2	170-115
5/16 x 1-1/2	172-917	5/16	173-521	1/4 x 1-1/2	170-521
3/8 x 1/4	170-856	3/8	170-022	1/4 x 2	170-056
3/8 x 3/8	170-151	7/16	170-046	1/4 x 2-1/2	173-961
3/8 x 1/2	170-857	1/2	170-036	ROLLER CHAIN	
3/8 x 1/2 UNF	171-469	1/2 Lock	174-063	CONNECTOR LINKS	
3/8 x 3/4	174-190	5/8	170-037	#50	170-088
3/8 x 3/4 (Sq hd)	170-290	3/4	170-035	#50-2R	170-094
3/8 x 1	170-021	1	174-927	#60	170-089
3/8 x 1 (Sq hd)	173-609	FLAT WASHERS		#60-2R	170-095
3/8 x 1 (Sq hd) (Dog pt)	171-551	#10	171-525	#60H	171-102
7/16 x 7/16	170-288	1/4	170-301	#80	170-090
7/16 x 1 (Sq hd)	170-147	1/4 Heavy	171-083	#80H	170-821
1/2 x 5/8	170-249	1/4 Fender	173-672	#80-2R	176-134
1/2 x 1	170-438	5/16	170-127	#100	170-091
1/2 x 1-1/4 (half dog point)	171-085	5/16 Fender	173-811	#100H	171-969
5/8 x 5/8	170-250	3/8	170-244	#120	170-092
3/4 x 3/4 (Sq hd) (Dog pt)	170-251	3/8 Heavy	170-302	#140	170-093
HEX NUTS		3/8 Aluminum	173-900	#140H	173-552
#6-32	172-418	3/8 Belleville	171-393	#160	170-888
#10-32	171-606	7/16	170-138	OFFSET LINKS	
#8-NC	174-193	1/2	170-040	#50	170-096
1/4	170-125	1/2 (Grade 8)	172-984	#50-2R	170-102
5/16	170-119	9/16	173-693	#60	170-097
3/8	170-007	5/8	170-066	#60-2R	170-103
7/16	170-062	5/8 (Grade 8)	173-581	#60H	171-103
7/16 (Grade 8) UNF	174-217	3/4	170-015	#80	170-098
1/2	170-004	7/8	173-298	#80H	170-820
9/16	173-702	7/8 Heavy	170-131	#80-2R	176-135
5/8	170-011	1	170-122	#100	170-099
3/4	170-017	1-1/4	170-928	#100H	172-145
3/4 UNF	170-159	LOCK WASHERS		#120	170-100
3/4 (Grade 8) UNF	173-520	#6	172-417	#140	170-101
1	171-776	#10	171-605	#140H	173-553
1 UNF	173-022	#8	174-194	#160	170-887
1 (Grade 8)	173-714	1/4	170-124	ROLLER LINKS	
1 (Grade 8) UNF	175-247	5/16	170-118	#50	171-415
1-1/8 UNF	174-095	3/8	170-006	#60	171-416
1-1/4 UNF	170-130	7/16	170-061	#80	171-417
1-1/4 (Grade 8)	175-006	1/2	170-003	#80H	170-795
M8 x 1.25MM	172-949	9/16	173-692	#100	171-418
M30 x 1.5MM	174-902	5/8	170-010	#100H	172-146
		3/4	170-016	#120	171-419
		3/4 External Tooth	174-793	#140	171-420
				#160	171-421

Part Number Index

101-741... 5	105-099... 27	143-576... 27
101-835... 5	105-100... 27	143-888... 27
102-437... 5	105-235... 11, 12	143-931... 19
102-439... 5	105-260... 41	143-932... 5
103-674... 5	105-444... 34	144-073... 27
103-779... 5	105-445... 34	144-074... 27, 29
104-239... 31	105-446... 34	144-121... 5
104-267... 33	105-452... 6, 8	144-198... 30, 31, 32, 33
104-285... 5, 6	105-458... 10, 11, 12	144-734... 30, 31, 32, 33
104-286... 32	105-465... 7, 9	144-864... 5
104-288... 5, 7	105-546... 27	145-014... 24
104-376... 30	136-454... 5	145-015... 27
104-397... 20	140-611... 5	145-062... 19
104-400... 27, 29	140-806... 20	145-070... 20
104-458... 41	141-062... 31	145-271... 27, 29
104-459... 41	141-063... 30, 31, 32, 33	145-338... 23
104-489... 20	141-065... 32, 33	145-339... 23
104-495... 41	141-114... 30, 31, 32, 33	145-340... 23
104-497... 41, 42	141-134... 30, 31, 32, 33	145-341... 23
104-561... 21	141-136... 18, 19	145-347... 24
104-806... 24	141-216... 25	145-446... 23, 25
104-807... 27	141-220... 25, 27	145-453... 23
104-810... 25	141-380... 30, 31	145-467... 26
104-811... 25	141-423... 20	145-471... 27
104-844... 20	141-430... 20	145-496... 23
104-868... 29	142-176... 32, 33	145-510... 43
104-869... 24	142-181... 32, 33	145-511... 43
104-871... 29	142-706... 32, 33	145-512... 43
104-874... 25	142-709... 32	145-513... 43
104-876... 25	142-726... 33	145-514... 43
104-877... 20	142-769... 30, 31, 32, 33	145-515... 43
104-887... 20	142-773... 32, 33	145-516... 43
104-899... 20	142-827... 30, 31, 32, 33	145-517... 43
104-922... 27	142-832... 5	145-518... 43
104-931... 41	142-837... 30, 31	145-519... 43
104-932... 41	142-839... 30, 31	145-604... 24
104-936... 25	142-840... 31	145-605... 25
104-948... 28	142-877... 30, 31	145-606... 27
104-954... 24	142-894... 5, 6, 7	145-638... 26
104-955... 24	142-895... 5, 6, 7	145-639... 26
104-956... 29	143-100... 32, 33	145-648... 25
104-957... 29	143-101... 30, 31, 32, 33	145-649... 24
104-958... 27	143-124... 30, 31	145-653... 25
104-959... 27	143-125... 30, 31	145-668... 27
104-960... 24	143-207... 32, 33	145-672... 27
104-961... 24	143-379... 19	145-673... 25, 27, 29
104-962... 29	143-386... 30	145-675... 24
104-963... 29	143-388... 30	145-677... 25
104-964... 27	143-408... 44	145-682... 25
104-983... 26	143-412... 5	145-683... 27
104-984... 26	143-413... 5	145-684... 27
104-990... 23	143-518... 27	145-804... 21
105-023... 26	143-546... 5	145-806... 21
105-097... 24, 27, 29	143-555... 25	145-822... 21
105-098... 27	143-556... 18	145-866... 27

Part Number Index

145-867... 27	170-301... 25, 27	171-828... 15
145-868... 27	170-302... 34	171-829... 15
145-977... 21	170-368... 11, 12, 26, 34, 41, 42, 44	171-830... 15
147-067... 25	170-369... 22	171-832... 15
147-136... 25	170-372... 21, 22, 44	171-833... 15
147-137... 25	170-373... 17, 27	171-877... 5
147-139... 12	170-381... 19	171-900... 5
147-140... 12	170-439... 25, 28	171-911... 46
170-002... 5, 25	170-456... 27	171-913... 46
170-003... 10, 18, 19, 25	170-464... 20	171-937... 28
170-004... 10, 18, 19, 25	170-490... 46	171-947... 46
170-005... 5, 8, 9, 21, 23, 34	170-509... 13	172-041... 13
170-006... 5, 11, 12, 23, 25, 26, 27, 28, 29, 34, 41, 42	170-532... 5	172-110... 14
170-007... 5, 11, 12, 21, 23, 25, 26, 28, 34, 41, 42	170-593... 25	172-360... 16
170-010... 18, 19, 30, 31, 32, 33	170-776... 35	172-361... 16
170-011... 19	170-803... 27, 29	172-387... 21
170-023... 16, 17	170-849... 46	172-396... 16
170-026... 27, 29	170-865... 15	172-496... 38
170-027... 5, 11, 12, 25, 27, 29	170-893... 46	172-715... 22
170-028... 5, 6, 7, 21	170-920... 16, 17	172-786... 46
170-030... 26	170-921... 16	172-820... 46
170-031... 15, 17, 26, 30, 31, 32, 33	170-922... 16	172-820... 46
170-040... 10, 21	170-926... 16	172-950... 36
170-042... 5, 17, 21, 26, 36	170-927... 16	172-981... 44
170-047... 5, 6, 7, 8, 9, 23, 27, 44	170-928... 16	172-999... 17
170-052... 18, 19	171-283... 12	173-001... 17
170-054... 5, 6, 7, 8, 9, 25, 27, 29	171-287... 24, 27, 29	173-002... 17
170-056... 15, 16	171-288... 24, 27, 29	173-007... 17
170-066... 30, 31, 32, 33	171-393... 5	173-031... 17
170-067... 15, 17	171-544... 37, 38, 39	173-032... 17
170-069... 25, 27	171-550... 37, 38, 39, 46	173-039... 5
170-073... 20	171-585... 18, 19	173-040... 46
170-074... 20	171-610... 13	173-041... 46
170-075... 21, 25	171-611... 13	173-077... 13
170-117... 11, 12, 25, 27, 29	171-612... 13	173-078... 46
170-118... 5, 11, 12, 17, 19, 20, 25, 27, 29	171-613... 13	173-111... 26
170-119... 5, 11, 12, 20, 25, 27, 29	171-614... 13	173-274... 20, 21, 25
170-120... 27, 29	171-615... 5	173-275... 20, 21, 25
170-122... 20	171-616... 17	173-300... 16, 17
170-123... 25, 27	171-653... 16, 17	173-301... 16, 17
170-124... 25, 27, 28, 29	171-666... 27, 29	173-302... 16, 17
170-125... 13, 25, 27, 28, 29	171-712... 46	173-343... 45
170-127... 5, 11, 12, 20, 21, 22, 25, 44	171-774... 5, 18, 19	173-916... 16, 17
170-128... 23	171-799... 37, 38, 39, 46	173-917... 16, 17
170-193... 27, 28	171-814... 13	173-926... 16, 17
170-244... 5, 8, 9, 11, 12, 21, 23, 25, 26, 28, 34, 41, 42, 44	171-815... 15	174-577... 16, 17
170-245... 23, 27	171-820... 46	174-673... 14
170-256... 20	171-823... 15	174-674... 14
170-262... 17, 22	171-824... 15	174-675... 14
170-292... 12	171-825... 15	174-686... 46
	171-826... 15	174-687... 46
	171-827... 15	174-725... 14
		174-754... 16
		174-755... 17
		174-756... 17
		174-757... 17

174-758... 16	175-749... 45	176-536... 39	177-681... 46
174-759... 17	175-750... 45	176-537... 39	177-749... 17
174-763... 5	175-751... 45	176-538... 35	178-118... 27, 29
174-765... 5	175-754... 45	176-539... 35	181-043... 44
174-771... 22	175-755... 45	176-540... 35	181-166... 22
174-772... 21	175-756... 45	176-541... 35	76003720... 46
174-775... 14	175-758... 45	176-542... 35	80060820... 19
174-784... 16, 17	175-759... 45	176-554... 38	80060825... 37
174-792... 46	175-760... 45	176-563... 37	80200840... 37
174-804... 17	175-779... 15	176-564... 39	82014571... 22
174-872... 46	175-911... 23	176-565... 38	82015510... 22
174-896... 45	175-919... 46	176-566... 18, 35	
174-904... 45	176-000... 14	176-568... 18	
174-917... 23	176-001... 46	176-569... 19	A5316700... 10
174-918... 10	176-049... 23, 25	176-571... 38	A5316800... 10
174-924... 46	176-064... 20	176-580... 25, 27	A5317921... 11
175-093... 21	176-072... 21	176-606... 22	A5318120... 10
175-110...	176-095... 11	176-624... 23	
30, 31, 32, 33	176-146... 19, 45	176-625... 27	
175-126... 16	176-151... 21	176-626... 23	
175-151... 46	176-168... 18, 19, 22	176-630... 27	
175-187... 45	176-170... 11	176-631... 29	
175-222... 15	176-181... 27, 29	176-661... 46	
175-224... 15	176-182... 27	176-662... 46	
175-230... 46	176-189... 45	176-663... 46	
175-237... 15	176-190... 45	176-664... 46	
175-238... 15	176-191... 45	176-697... 23	
175-262... 15	176-192... 22	176-760... 21	
175-270... 15	176-193... 22	176-769... 21	
175-331... 17	176-246... 5	176-770... 21	
175-332... 17	176-255... 21	176-784... 27	
175-333... 17	176-291... 20	176-848... 14	
175-334... 17	176-343... 14	176-936... 16	
175-335... 17	176-360... 14	177-130... 19, 36	
175-336... 17	176-369... 14	177-136... 36	
175-387... 5	176-370... 14	177-137... 36	
175-588... 46	176-423... 21	177-138... 36	
175-589... 46	176-425... 21	177-139... 36	
175-590... 46	176-426... 21	177-140... 36	
175-606... 22	176-501... 20	177-141... 36	
175-634...	176-520... 18, 19	177-172... 23	
18, 19, 30, 31, 32, 33	176-521... 18	177-365... 46	
175-642... 5, 6, 7	176-522...	177-366... 46	
175-664... 25	18, 19, 36, 37, 38, 39	177-406... 46	
175-673... 20, 23, 25	176-523... 19	177-407... 46	
175-675...	176-524... 37, 38, 39	177-408... 46	
20, 21, 23, 25	176-525... 37	177-409... 46	
175-684... 20	176-526... 37, 38, 39	177-480... 14	
175-687... 20, 21, 23	176-527... 37, 38, 39	177-491... 46	
175-699... 21	176-528... 37, 38, 39	177-633... 15	
175-700... 23	176-529... 37, 38, 39	177-634... 15	
175-729... 23	176-530... 37, 38, 39	177-635... 15	
175-730... 23	176-531... 22	177-678... 46	
175-747... 45	176-534... 37, 38, 39	177-679... 46	
175-748... 45	176-535... 37	177-680... 46	