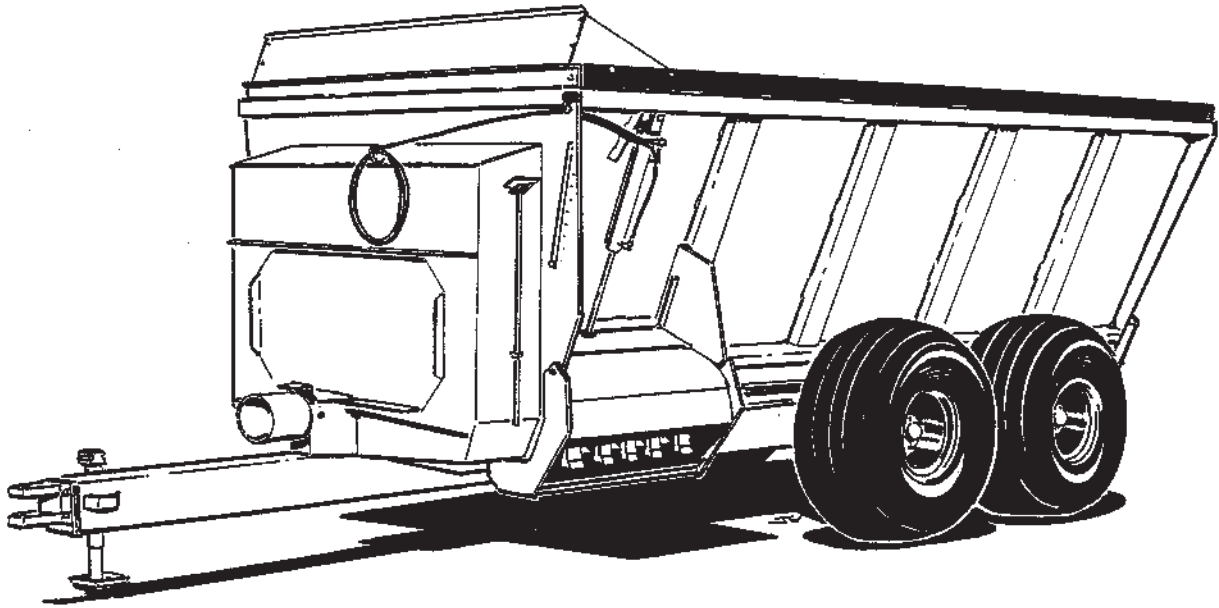


# **PRO TWIN SLINGER**

## **MODEL 8030 TOW TYPE**

### **SERVICE PARTS LISTING**



#### **TABLE OF CONTENTS**

|                                    |       |
|------------------------------------|-------|
| Using This Listing .....           | 1     |
| Front End Parts .....              | 2-5   |
| Discharge Parts .....              | 6-7   |
| Running Gear Parts .....           | 8-9   |
| Rear End Parts .....               | 10-11 |
| Splash Guard & Auger Parts .....   | 12-13 |
| PTO Driveline .....                | 14-19 |
| Top Lid Parts .....                | 20-21 |
| Decal & Paint List .....           | 22    |
| Optional Kits .....                | 23    |
| Flighting Terms & Dimensions ..... | 24    |
| Hardware Listing .....             | 25-26 |
| Index .....                        | 27-28 |

Catalog P/N 005569      Unit Serial Number: \_\_\_\_

Operator Instruction Manual For This Unit Is #005568  
R031097

**ABBREVIATIONS**

8030-TOW

|              |                           |
|--------------|---------------------------|
| Assy         | Assembly                  |
| A/R          | As Required               |
| B            | Bolt                      |
| Brg          | Bearing                   |
| BSN          | Before Serial Number      |
| BTM          | Bottom                    |
| C Bolt       | Carriage Bolt             |
| Cttr         | Cotter                    |
| CV           | Constant Velocity (Joint) |
| Dia          | Diameter                  |
| ea           | Each                      |
| Eq or Equiv  | Equivalent                |
| FLN          | Flanged Lock Nut          |
| FW           | Flat Washer               |
| Ga           | Gauge                     |
| Gr or Grd    | Grade                     |
| Hd           | Head                      |
| Hyd          | Hydraulic                 |
| ID           | Inside Diameter           |
| Ill or Illus | Illustration              |
| Ind          | Indicator                 |
| KW           | Keyway                    |
| LH           | eft Hand                  |
| LW           | Lock Washer               |
| Mtg Hrd      | Mounting Hardware         |
| NC           | National Coarse           |
| NF           | National Fine             |
| OD           | Outside Diameter          |
| Pc(s)        | Piece(s)                  |
| PD           | Pitch Diameter            |
| PTO          | Power Takeoff (Shaft)     |
| Q or Qty     | Quantity                  |
| Reg Mach     | Regular Machine           |
| RH           | Right hand                |
| SN           | Serial Number             |
| S.S.         | Setscrew                  |
| Sprkt        | Sprocket                  |
| Sq           | Square                    |
| Std          | Standard                  |
| UASN         | Used After Serial Number  |
| UBSN         | Used Before Serial Number |

This listing uses a number indentation system to specify the parts of an assembly. Any number which is indented to the right, indicates that it is a component of the item to the upper left.

Example:

| <u>Part no</u>   | <u>Description</u>     | <u>Qty</u> |
|------------------|------------------------|------------|
| uuu-uuu          | Assembly A             | 2          |
| vvv-vvv          | Sub-Assembly B         | 3          |
| (Component of A) |                        |            |
| www-www          | Component of B         | 5          |
| xxx-xxx          | Another Component of B | 1          |
| yyy-yyy          | Sub-Assembly C         | 1          |
| (Component of A) |                        |            |
| etc.             |                        |            |

Using this system, the sub-assemblies and their components are included if an **Assembly** is ordered. Similarly, the components of a sub-assembly are included if a sub-assembly is ordered.

The quantity (qty) associated with an assembly, represents the number of times an assembly could be shown in the drawing. The sub-assembly quantity however, is the number of times a sub-assembly is used to build one assembly. Similarly, the component quantity refers to the number of times a given component is found in one sub-assembly.

**MODEL AND SERIAL NUMBER INFORMATION** is located below the drive shielding (Fig. A). The model number, serial number and part number should be known when asking service personnel for parts.

If you cannot find the part you need, be as descriptive as possible when placing an order:

**Sprockets:** give the bore size, number of teeth, and number and size of keyways.

**Roller chain:** give the size of chain (stamped on the side of each link) and number of links.

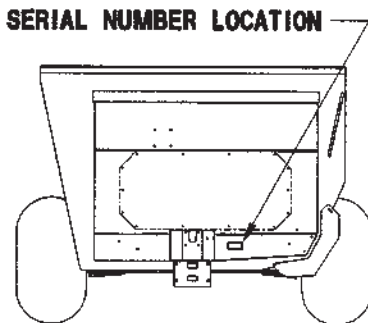
**Shafting:** give the diameter, length, and number and size of keyways.

Hardware is generally not included with parts. If you need any hardware, check the size, the length, and the grade (Fig. B), then check the hardware list in this manual for the part numbers.

**All hex head bolts up to and including 7/16" diameter are grade 5, and nuts are grade B unless otherwise stated.**

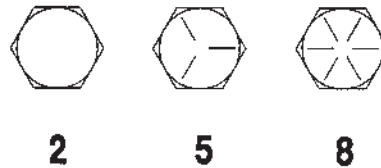
The hardware listing also includes listings for zerks, cotter pins, set screws, and roller chain links.

**The illustrations in this manual are meant to be used only as a guide for identifying parts and locating their relative positions.**



Serial Number Location  
Front View  
Figure A

**BOLT GRADES**

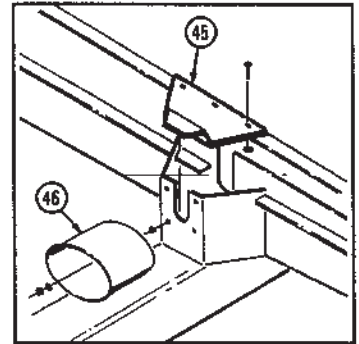


2                      5                      8

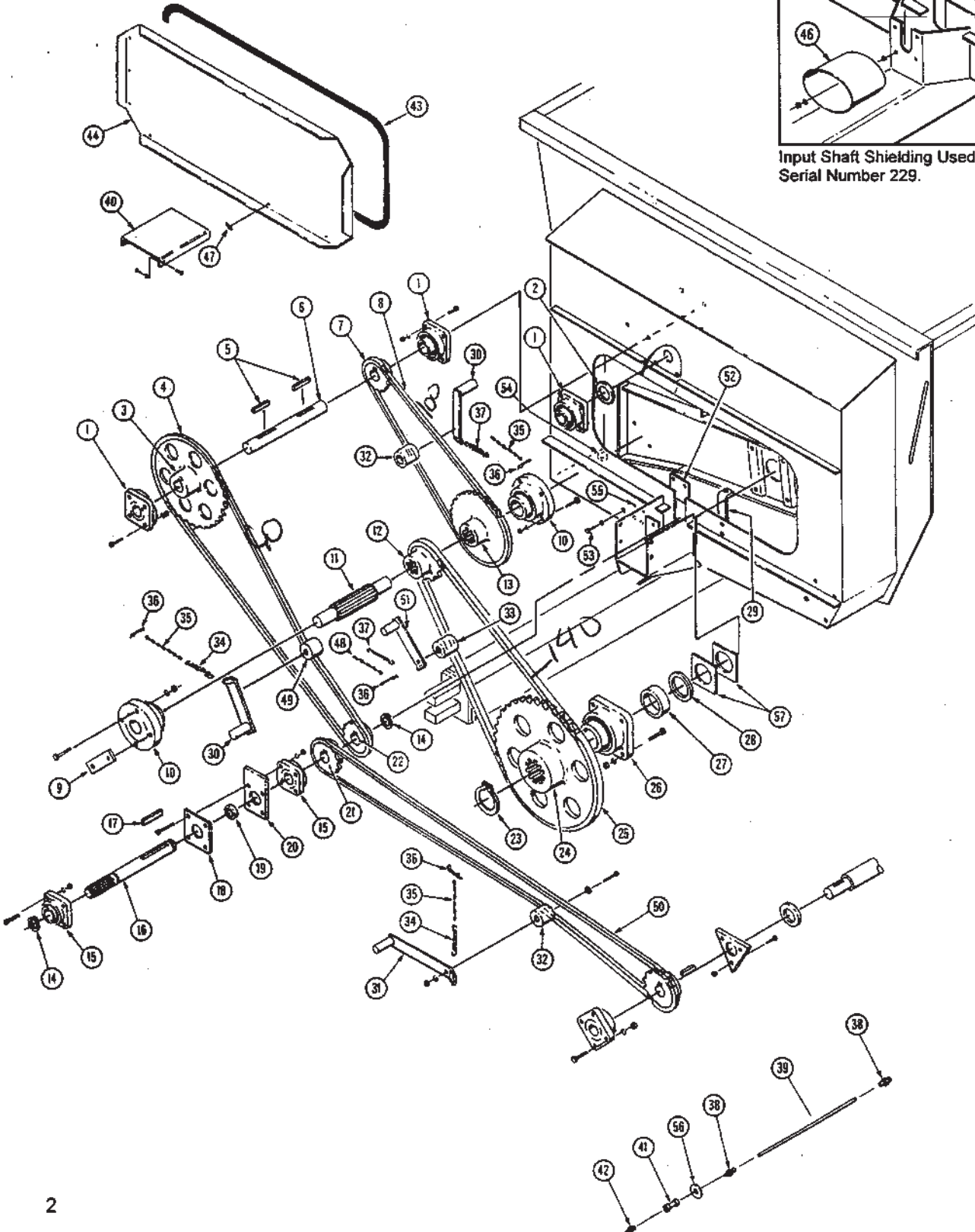
Bolt Head Grade Markings  
Figure B

**FRONT END PARTS**

8030-TOW R020998



Input Shaft Shielding Used Before Serial Number 229.



**FRONT END PARTS**

| REF | PART NO                | QTY | DESCRIPTION  |
|-----|------------------------|-----|--|
| 1   | 170-008                | 3   | Bearing; 2" Flanged Seal Master MSF-32 or Equiv.<br>Mtg Hrd: 5/8" x 2" Bolt, LW, Nut   |
| 2   | 133-376                | 1   | Poly Seal; 2" I.D.   |
| 3   | 136-176                | 1   | Sprocket; 60B-90, 2" Bore  |
|     | 130-369 <sup>C</sup>   | 1   | Sprocket; 60B-72, 2" Bore  |
| 4   | 173-080                | 1   | Roller Chain; 60-1-138 Pitch, W/Connector Link   |
|     | 172-483 <sup>C</sup>   | 1   | Roller Chain; 60-1-136 Pitch, W/Connector Link   |
| 5   | 170-835                | 2   | Key; 1/2" x 1-1/2" Straight  |
| 6   | 134-842                | 1   | Shaft; 2" x 12-1/2" Upper Counter  |
| 7   | 134-787                | 1   | Sprocket; 100B-12, 2" Bore   |
| 8   | 172-485                | 1   | Roller Chain; 100-1-76 Pitch, W/Connector Link   |
| 9   | 134-883 <sup>A B</sup> | 1   | Bearing Spacer   |
| 10  | 170-365                | 1   | Bearing; 2-1/2" Double Roller, PTC FB22440E or Equiv.<br>Mtg Hrd: 5/8" x 2-1/2" Bolt, LW, Nut (4) Outer Bearing<br>5/8" x 2" Bolt, LW, Nut (4) Inner Bearing   |
| 11  | 134-834                | 1   | Shaft; 3" x 11-3/8" Splined Lower Counter  |
| 12  | 134-789                | 1   | Sprocket; 140B-11, 3" Splined  |
| 13  | 134-788                | 1   | Sprocket; 100B-36, 3" Splined  |
| 14  | 171-387                | 2   | Snap Ring; 1-1/2" External   |
| 15  | 172-288 <sup>D</sup>   | 2   | Bearing; 1-1/2" Eccentric Lock FYH NANF 208-24 or Equiv.<br>Mtg Hrd: 1/2" x 1-3/4" Bolt LW, Nut (4) Outer Bearing<br>1/2" x 2" Bolt, LW, Nut (4) Inner Bearing |
| 16  | 134-780                | 1   | Shaft; 1-1/2" Splined  |
| 17  | 170-052                | 1   | Key; 3/8" x 2-1/2" Square  |
| 18  | 134-906                | 1   | Seal Retainer Plate  |
| 19  | 172-355                | 1   | Seal; Lip, 1-1/2"  |
| 20  | 134-898                | 1   | Shaft Spacer Plate   |
| 21  | 136-177                | 1   | Sprocket; 80B-15, 1-1/2" Bore  |
|     | 134-786 <sup>C</sup>   | 1   | Sprocket; 60B-21, 1-1/2" Bore  |
| 22  | 134-602 <sup>C</sup>   | 1   | Sprocket; 60B-18, 1-1/2" Bore  |
|     | 136-175 <sup>D</sup>   | 1   | Sprocket; 60B-23, 1-1/2" Bore  |
| 23  | 171-989                | 1   | Snap Ring; 4" External   |
| 24  | 134-790                | 1   | Sprocket; 140B-45, 4" Splined  |
| 25  | 172-489                | 1   | Roller Chain; 140-1-66 Pitch, W/Connector Link   |
| 26  | 171-990                | 1   | Bearing; 4" Double Roller, Linkbelt F-B22464H or Equiv.<br>Mtg Hrd: 7/8" x 3" Bolt, LW, Nut  |
| 27  | 135-707                | 1   | Seal Spacer  |
| 28  | 172-913                | 1   | Quad Ring Seal; 4" I.D.  |
| 29  | 134-889                | 1   | Chain Retainer Arm   |
| 30  | 101-911                | 2   | Chain Tightener Arm  |
| 31  | 101-761                | 1   | Chain Tightener Arm  |
| 32  | 134-155                | 2   | Poly Tightener Block<br>Mtg Hrd: 1/2" x 3" Bolt, FW, LW, Nut   |
| 33  | 134-919                | 1   | Poly Tightener Block; FW, LW, Nut  |

A: This item has a quantity of one on serial numbers (8030-122) and before.

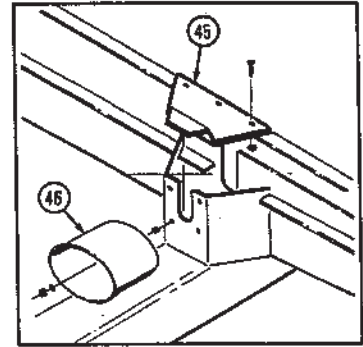
B: This item has a quantity of two on serial numbers (8030-123) to (8030-307).

C: This item is no longer used on serial numbers (8030-675) and after.

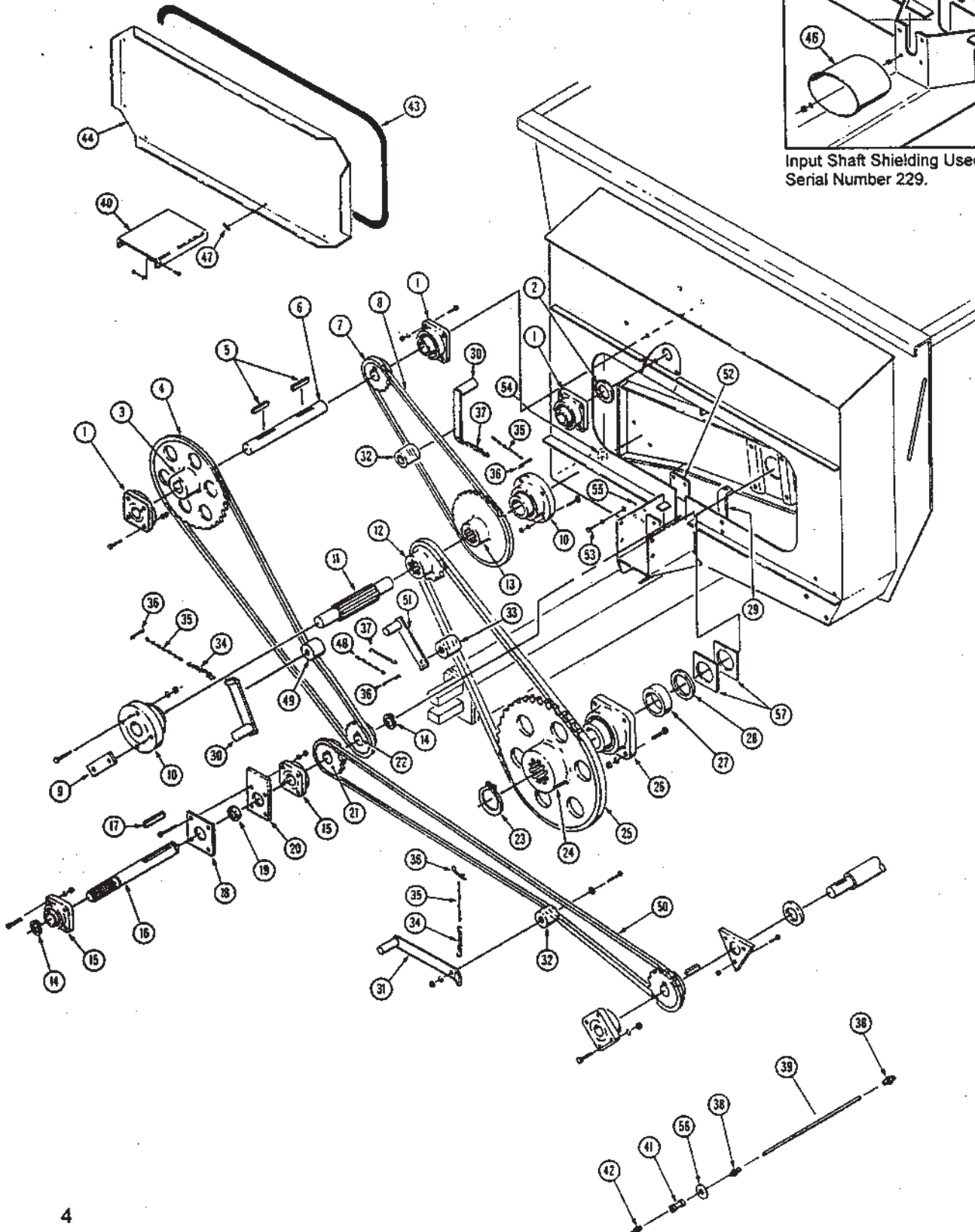
D: On serial numbers (8030-967) and before, this item was mounted on the back side of it's mounting plate facing inward toward the oil bath compartment. On serial numbers (8030-968) and after, this item is mounted on the outside of it's mounting plate facing the PTO shaft.

**FRONT END PARTS**

8030-TOW R020998



Input Shaft Shielding Used Before Serial Number 229.



**FRONT END PARTS**

8030-TOW R052297

| REF | PART NO              | QTY | DESCRIPTION   |
|-----|----------------------|-----|---|
| 34  | 172-005              | 2   | Spring  |
| 35  | 170-845              | 3   | Machine Chain #4 x 17 Links   |
| 36  | 170-800              | 4   | Clinch Pin  |
| 37  | 172-751              | 2   | Spring  |
| 38  | 172-822              | 16  | Compression Fitting   |
|     | 172-823              | 5   | Compression Fitting; 1/4" Tapered   |
| 39  | 180-630*             | 1   | Nylon Tube; 34" x 3/16" O.D.<br>Required For Front Expeller Bearing                       |
|     |                      | 1   | Nylon Tube; 30" x 3/16" O.D.<br>Required For Front Lower Auger Bearing                    |
|     |                      | 1   | Nylon Tube; 23" x 3/16" O.D.<br>Required For Rear Upper Counter Shaft Bearing             |
|     |                      | 1   | Nylon Tube; 30" x 3/16" O.D.<br>Required For Front Upper Counter Shaft Bearing            |
|     |                      | 1   | Nylon Tube; 14" x 3/16" O.D.<br>Required For Front Upper Auger Bearing                    |
|     |                      | 1   | Nylon Tube; 57" x 3/16" O.D.<br>Required For Inner Input Shaft Bearing                    |
|     |                      | 1   | Nylon Tube; 28" x 3/16" O.D.<br>Required For Rear Lower Counter Shaft Bearing             |
|     |                      | 1   | Nylon Tube; 35" x 3/16" O.D. Front Lower Counter Shaft Bearing                            |
| 40  | 135-604 <sup>B</sup> | 1   | Input Shaft Shield; Mtg Hrd: 5/16" x 3/4" Bolt, FLN & 171-393<br>Belleville Washer (2 ea) |
| 41  | 172-024              | 8   | Pipe Coupling   |
| 42  | 170-865              | 8   | Grease Zerk   |
| 43  | 171-935              | 11  | Foam Seal   |
| 44  | 134-840              | 1   | Front Shield  |
| 45  | 134-891 <sup>B</sup> | 1   | Input Housing Shield  |
| 46  | 171-972 <sup>B</sup> | 1   | Plastic PTO Shield; Mtg Hrd: FW (8ea), LN (4ea)   |
| 47  | 171-929              | 14  | Wing Nut, 3/8" (With Flat Washer)   |
| 48  | 171-045              | 1   | Machine Chain #4 x 22 Links   |
| 49  | 134-086              | 2   | Poly Tightener Block; Mtg Hrd: 1/2" x 4" Bolt, FW, LW, Nut                                |
| 50  | 172-283              | 1   | Roller Chain; 80-1-85 P.  |
|     | 172-484 <sup>C</sup> | 1   | Roller Chain; 60-H-1-114 P.   |
| 51  | 102-069              | 1   | Chian Tightener Arm   |
| 52  | 134-908              | 1   | Cover Plate; Mtg Hrd 1/2" x 1" Bolt, LW, Nut (4 ea.)                                      |
| 53  | 171-252              | 1   | 1/2" x 3/4" Bolt and 172-884 Plastic Washer   |
| 54  | 171-919              | 1   | Drain Plug; 1-1/4" PVC  |
| 55  | 170-149              | 4   | 1/2" x 1" Bolt, LW, Nut   |
| 56  | 170-244              | 8   | Flat Washer; 3/8"   |
| 57  | 135-706              | 2   | Poly Spacer   |

\* 180-630 Nylon Tube is sold by the foot.

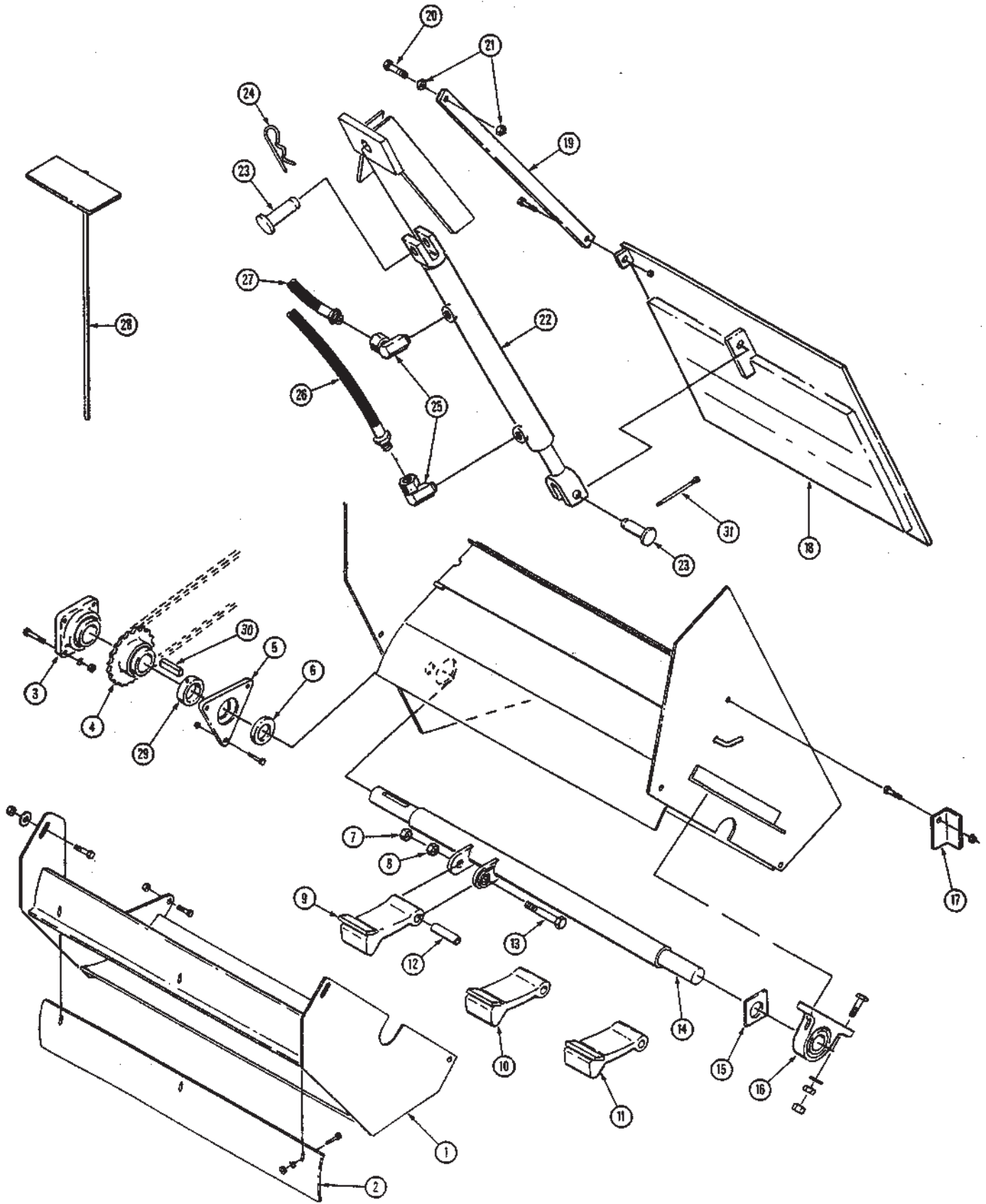
A: Poly Block Style has changed. Before Serial Number (8030-090) use 134-086 Block.

B: Before serial number (8030-229) use 134-981 for shielding the input shaft bearing area, and 171-972 plastic shield on input shaft bearing mount.

C: Sprockets and Chains used before serial number 674

**DISCHARGE PARTS**

8030-TOW R101794

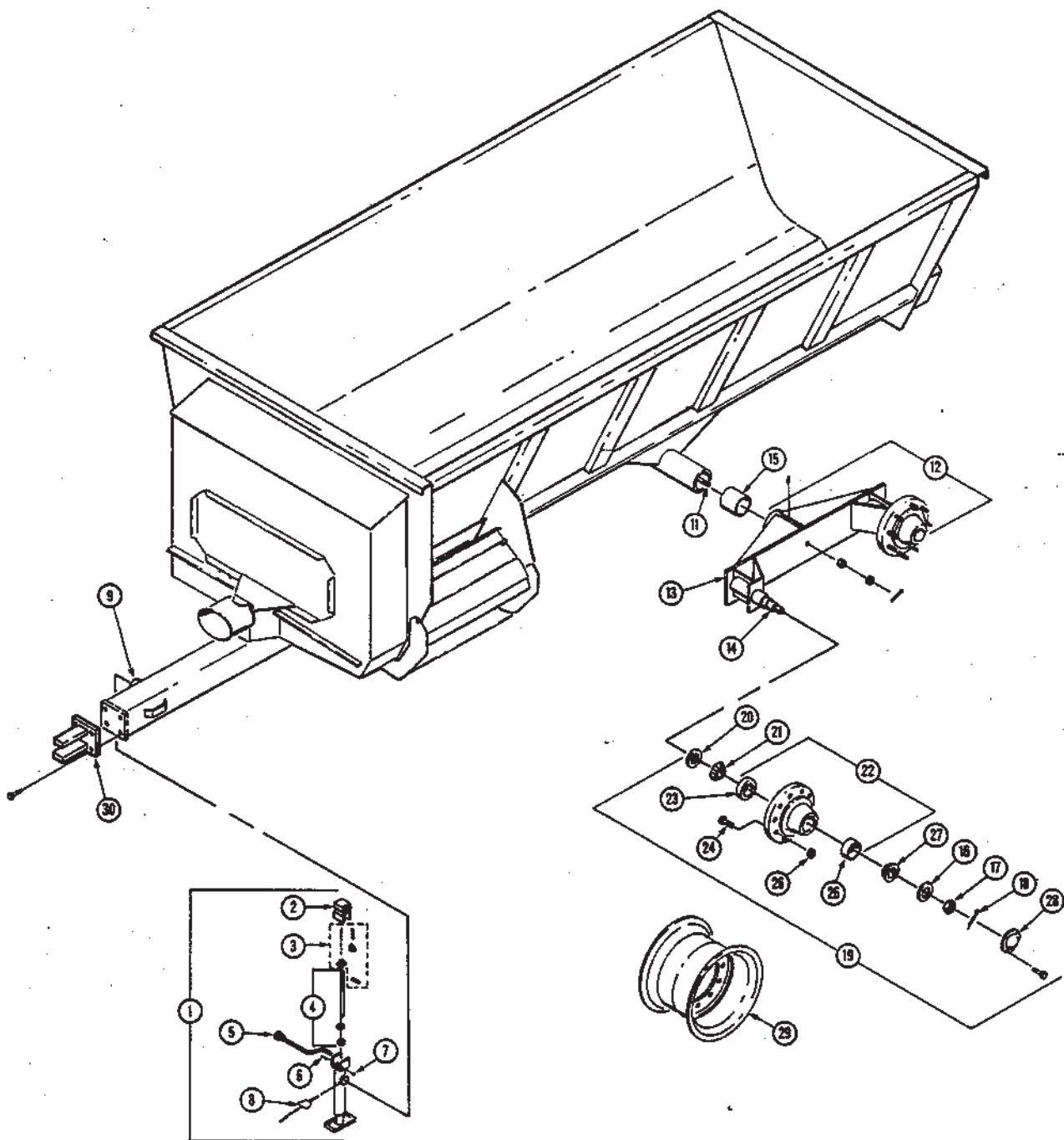


**DISCHARGE PARTS**

8030-TOW R043097

| REF | PART NO              | QTY | DESCRIPTION   |
|-----|----------------------|-----|---|
| 1   | 102-059              | 1   | Discharge Shroud Assy;<br>Mtg Hrd 3/8" x 1" Bolt, Heavy FW & LN (4 ea) <b>(Upper)</b><br>3/8" x 1" <b>(Lower Pivot)</b>         |
| 2   | 134-666              | 1   | Shroud Visor; Mtg Hrd 5/16" x 1" FW, LW & Nut   |
| 3   | 170-008              | 1   | Bearing; 2" Flanged, Sealmaster MSF-32 or Equiv.<br>Mtg Hrd 5/8" x 1-3/4" LW & Nut  |
| 4   | 136-178              | 1   | Sprocket; 80-B-18, 2" Bore 1/2" KW, Inc. 170151 S.S.  |
|     | 134-785 <sup>C</sup> | 1   | Sprocket; 60-B-24, 2" Bore 1/2" KW, Inc. 170151 S.S.  |
| 5   | 134-831              | 1   | Seal Retainer Plate; Mtg Hrd 5/16" x 1" FLN   |
| 6   | 133-277              | 1   | Poly Seal   |
| 7   |                      | 15  | Lock Nut; 5/8" <b>(Grade 5)</b>   |
| 8   | 170-037              | 15  | Jam Nut; 5/8" <b>(Grade 5)</b>  |
| 9   | 101-548              | 1   | Front Hammer Assy; <b>(Tip #133-299)</b>  |
| 10  | 101-586              | 13  | Center Hammer Assy <b>(Tip #133-298)</b>  |
| 11  | 101-549              | 1   | Rear Hammer Assy <b>(Tip #133-299)</b>  |
| 12  | 172-422              | 15  | Nylon Hammer Sleeve   |
| 13  | 172-421              | 15  | Bolt; 5/8" x 5-1/2" Bolt <b>(Grade 5)</b><br><b>Use AWS E10018 Electrode or Greater</b><br><b>When Welding Replacement Tips</b> |
| 14  | 101-988              | 1   | Hammer Shaft Assy   |
| 15  | 134-875              | 1   | Plastic Seal  |
| 16  | 171-586              | 1   | Pillow Block Bearing; MPT # NAP 211-32 or Equiv<br>Mtg Hrd 5/8" x 2-1/2" Bolt, FW, JN & LN (2 ea.)                              |
| 17  | 134-874              | 1   | Lock Angle; Mtg Hrd 5/16" x 1" Bolt, FW & LN  |
| 18  | 102-061              | 1   | Discharge Door Assy   |
| 19  | 134-878              | 1   | Door Height Indicator Bar<br>Mtg Hrd 5/16" x 3/4" Bolt, 5/16" LN  |
| 20  | 170-319              | 1   | Bolt; 1/2" x 2-1/2"   |
| 21  | 170-004              | 2   | Nut; 1/2"   |
| 22  | 172-752              | 1   | Hydraulic Cylinder, 2" x 18" Stroke. <b>(order seal kit # 170-075)</b>  |
| 23  | 170-073              | 2   | Clevis Pin; 1" x 4-1/2"   |
| 24  | 170-074              | 1   | Hair Pin Clip; 3" Long, 5/32" Wire Dia.   |
| 25  | 170-030              | 2   | Adapter; 90 Deg.  |
| 26  | 171-464              | 1   | Hydraulic Hose; 190" OAL <b>(Lower)</b>   |
| 27  | 170-471              | 1   | Hydraulic Hose; 170" OAL <b>(Upper)</b>   |
| 28  | 101-636              | 1   | Clean Out Tool  |
| 29  | 172-772              | 1   | Lock Collar   |
| 30  | 170-835              | 1   | Key; 1/2" x 1/2" x 1-1/2"   |
| 31  | 170-115              | 1   | Cotter Pin; 3/16" x 2"  |

C: Sprockets and Chains used before serial number 674



**RUNNING GEAR PARTS**

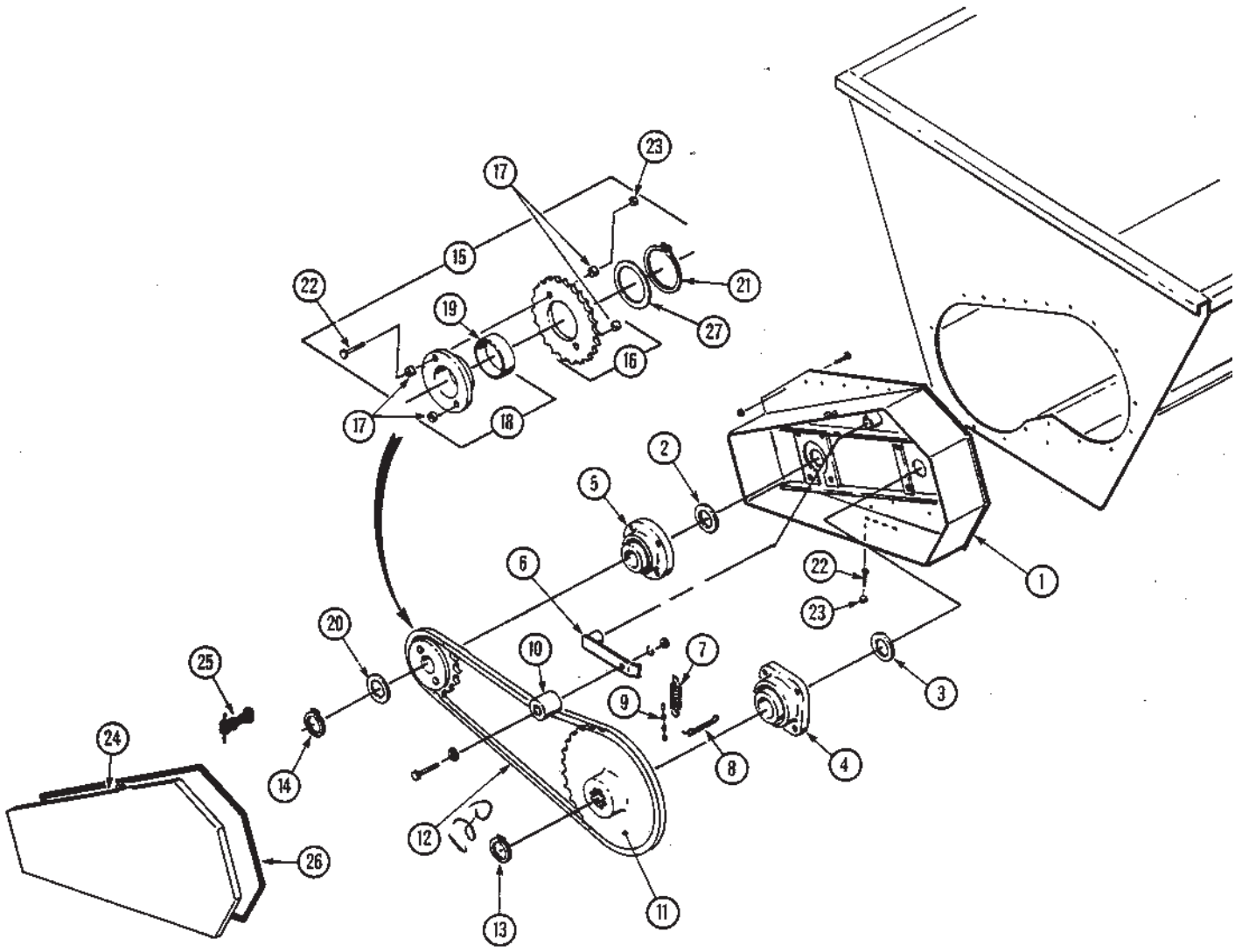
8030-TOW R022798

| REF | PART NO | QTY | DESCRIPTION  |
|-----|---------|-----|--|
| 1   | 171-610 | 1   | Jackstand Assembly   |
| 2   | 171-814 | 1   | Cover  |
| 3   | 171-614 | 1   | Gear Kit   |
| 4   | 171-611 | 1   | Screw, Nut, Bearing & Washer Assembly  |
| 5   | 171-612 | 1   | Crank Assembly   |
| 6   | 170-509 | 1   | Carriage Bolt; 1/4" x 3"   |
| 7   | 170-125 | 2   | 1/4" Nut   |
| 8   | 171-613 | 1   | Pull Pin   |
| 9   | 171-615 | 1   | Mount Tube Assembly  |
| 11  | 102-046 | 1   | Tie Rod Assembly Mtg Hrd: 3/4" Nut, Jam Nut,<br>(170-236) Cotter Pin (1 ea) & FW (2) |
| 12  | 102-049 | 1   | LH Bogie Assembly  |
| 13  | 102-065 | 1   | LH Bogie Weldment  |
|     | 170-865 | 1   | Grease Zerk  |
| 14  | 134-824 | 1   | Spindle; 3"  |
|     | 102-048 | 1   | RH Bogie Assembly  |
|     | 102-066 | 1   | RH Bogie Weldment  |
|     | 170-865 | 1   | Grease Zerk  |
|     | 134-824 | 1   | Spindle; 3"  |
| 15  | 134-843 | 1   | Bushing; Bogie Pivot   |
| 16  | 170-928 | 2   | Spindle Washer   |
| 17  | 170-927 | 1   | Castle Nut; 1-1/4" UNF   |
| 18  | 170-056 | 1   | Cotter Pin; 1/4" x 2"  |
| 19  |         | 1   | 10-Bolt Hub Assembly   |
| 20  | 172-362 | 1   | Grease Seal  |
| 21  | 172-360 | 1   | Inside Bearing Cone * Timken #33275 or Equiv.  |
| 22  | 172-396 | 1   | 10-Bolt Hub  |
| 23  | 172-361 | 1   | Inside Bearing Race * Timken #33462 or Equiv.  |
| 24  | 170-919 | 10  | Wheel Stud; 3/4" NF  |
| 25  | 170-922 | 1   | Outside Bearing Race<br>* Durst 453A-E.W. #1300752-00 or Equiv.                      |
| 26  | 170-920 | 10  | Wheel Nut; 3/4" NF   |
| 27  | 170-921 | 1   | Outside Bearing Cone<br>* Durst 460-E.W. #1300781-00 or Equiv.                       |
| 28  | 170-926 | 1   | Dust Cap   |
| 29  | 172-481 | 4   | Wheel; 16.1" x 18", 10-Hole  |
|     | 172-312 | 4   | Wheel; 13.5 x 22.5 10-Hole (Optional)  |
| 30  | 102-047 | 1   | Clevis Mtg Hrd: 3/4" x 2" Gr. 8 Bolt (4 ea)<br>3/4" LN Gr. 8 (4 ea)                  |

ADD WHEEL  
173158 WHEEL DWDA 28  
10 HOLE.  
23.1 X

**REAR END PARTS**

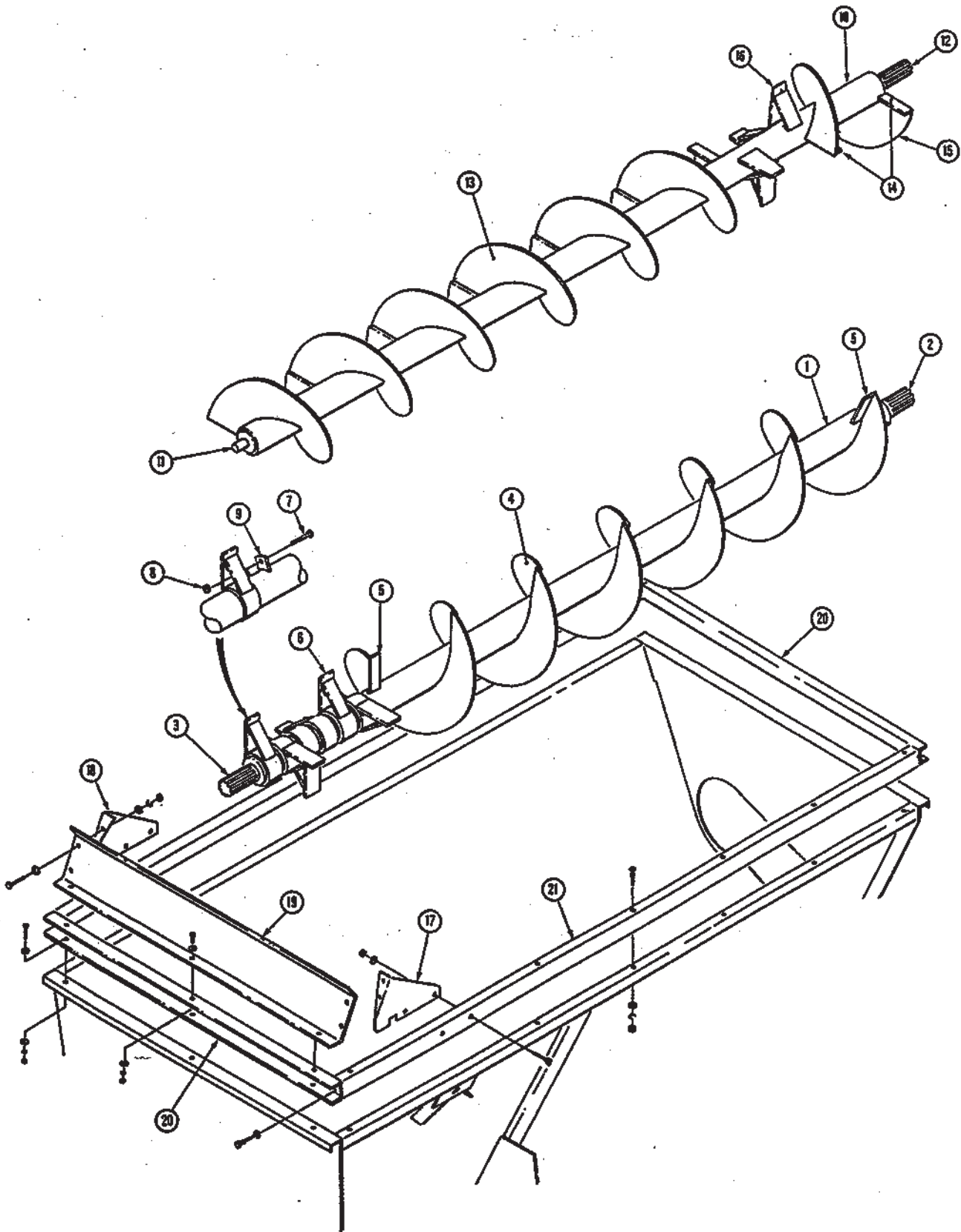
8030-TOW R080996



**REAR END PARTS**

8030TR 005569 R061200

| REF | PART NO | QTY  | DESCRIPTION  |
|-----|---------|------|--|
| 1   | 102-044 | 1    | Rear Cover<br>Mtg Hrd: 3/8" x 1" Bolt, FW, LW, & Nut (21 ea.)                                      |
| 2   | 133-899 | 1    | Poly Seal; 3" I.D.   |
| 3   | 133-278 | 1    | Poly Seal; 3-1/2" I.D.   |
| 4   | 170-445 | 1    | Bearing; 3-1/2" Double Roller PTC 22456E or Equiv.<br>Mtg Hrd: 3/4" x 2-1/2" Bolt, LW & Nut (4 ea) |
| 5   | 171-930 | 1    | Bearing; 3" PTC F-B 22448E or Equiv.<br>Mtg Hrd: 3/4" x 2-1/2" Bolt, LW & Nut (4 ea)               |
| 6   | 101-911 | 1    | Chain Tightener Arm  |
| 7   | 172-751 | 1    | Spring; 1-1/2" x 8-1/4" Long   |
| 8   | 170-800 | 1    | Clinch Pin; 1-1/2" Long  |
| 9   | 170-845 | 1    | Machine Chain; #4 x 17 links   |
| 10  | 134-086 | 1    | Tightener Block Mtg Hrd: 1/2" x 4" Bolt, FW, LW, & Nut   |
| 11  | 134-792 | 1    | Sprocket; 120-B-48, 3-1/2" Spline  |
| 12  | 171-764 | 1    | Roller Chain; 120-1-76P  |
| 13  | 171-607 | 1    | Snap Ring; 3-1/2" External   |
| 14  | 171-934 | 1    | Snap Ring; 3" External   |
| 15  | 102-057 | 1    | Shear Sprocket Assembly  |
| 16  | 102-058 | 1    | Shear Sprocket   |
| 17  | 134-893 | 4    | Tube; Shear Sleeve (Welded into Sprocket & Hub)  |
| 18  | 102-064 | 1    | Shear Hub  |
| 19  | 134-481 | 1    | Bronze Bushing (Pressed into Hub)  |
| 20  | 172-368 | 1    | Retainer Plate   |
| 21  | 171-989 | 1    | Snap Ring; 4" External   |
| 22  | 170-168 | 2    | Shear Bolt; 1/2" x 3" Grade 5  |
| 23  | 170-042 | 2    | Nut; 1/2" Lock   |
| 24  | 102-063 | 1    | Shield; Rear   |
| 25  | 170-950 | 1    | Rubber Latch   |
| 26  | 171-935 | 6 Ft | Foam Seal  |
| 27  | 134-892 | 1    | Retainer Plate   |



**SPLASH GUARD & AUGER PARTS**

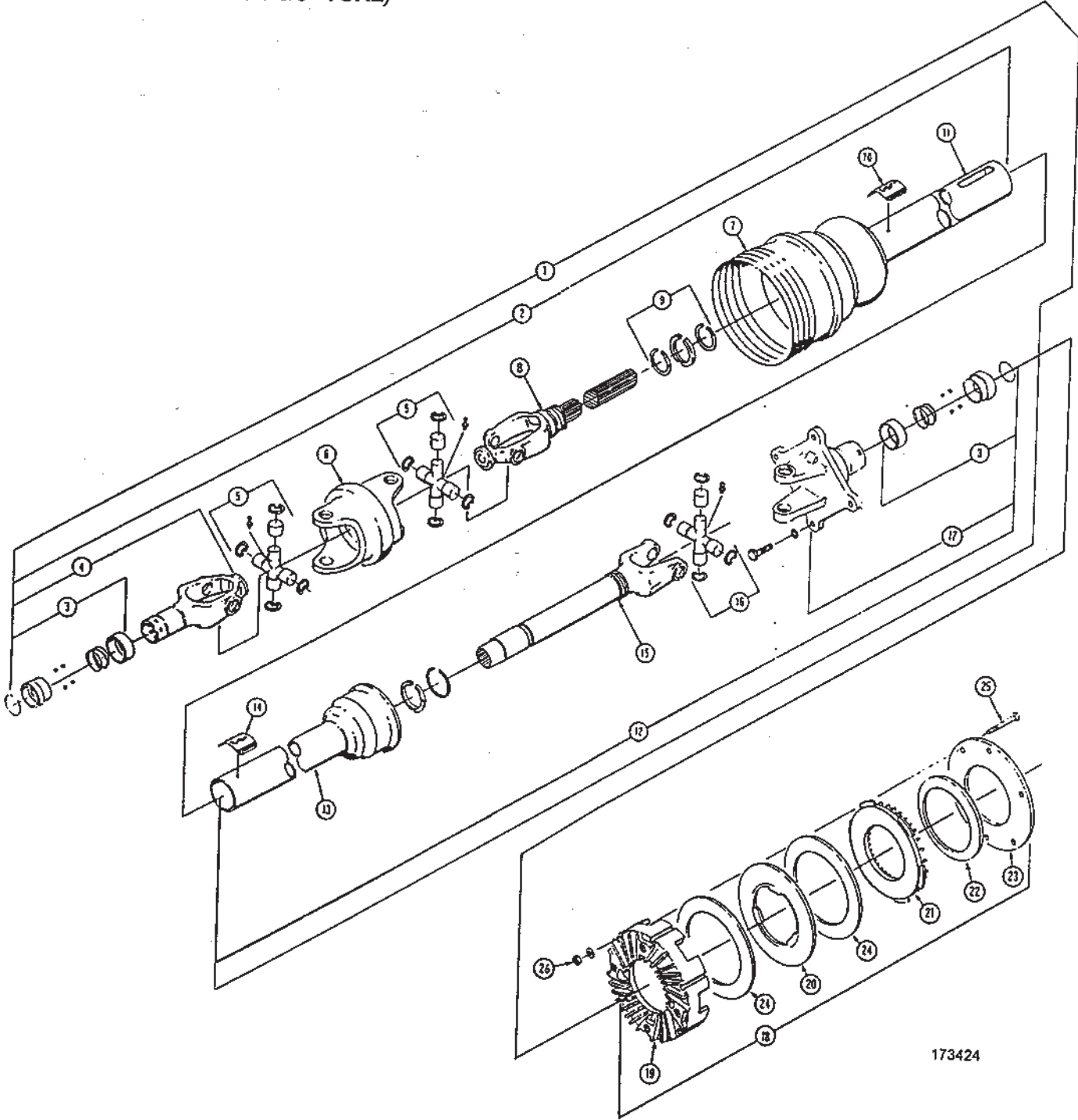
8030-TOW R101794

| REF | PART NO | QTY | DESCRIPTION  |
|-----|---------|-----|--|
| 1   | 102-051 | 1   | Lower Auger Assembly   |
| 2   | 102-053 | 1   | Rear Plug Assembly   |
| 3   | 102-055 | 1   | Front Plug Assembly  |
| 4   | 134-783 | 7   | Flighting; 3/8" x 24" x 6-1/2" x 24" LH<br>(6-1/2" Sections Required)                              |
| 5   | 134-897 | 4   | Flighting Support Bar  |
| 6   | 102-056 | 6   | Shear Paddle Assembly  |
| 7   | 171-802 | 6   | Paddle Shear Bolt; 1/2" x 2" (Gr. 5)   |
| 8   | 170-042 | 6   | Paddle Shear Nut; 1/2" Lock  |
| 9   | 134-835 | 6   | Paddle Mount Lug   |
| 10  | 102-050 | 1   | Upper Auger Assembly   |
| 11  | 102-052 | 1   | Front Plug Assembly  |
| 12  | 102-054 | 1   | Rear Plug Assembly   |
| 13  | 134-784 | 7   | Flighting; 3/8" x 24" x 6-1/2" x 24" RH<br>(6-1/2" Sections Required)                              |
| 14  | 134-897 | 6   | Flighting Support Bar  |
| 15  | 134-783 | 1   | Flighting; 3/8" x 24" x 6-1/2" x 24" LH (1 Section)  |
| 16  | 102-060 | 4   | Paddle Assembly  |
| 17  | 133-556 | 1   | Splash Guard Side (RH Front & LH Rear)   |
| 18  | 133-557 | 1   | Splash Guard Side (LH Front & RH Rear)   |
| 19  | 134-861 | 1   | Splash Guard End; 5/16 x 1"<br>Bolt, LW, Nut (7 ea),<br>FW (14 ea)                                 |
| 20  | 134-860 | 1   | End Panel Extension;<br>5/16" x 1" Bolt, LW, Nut (3 ea), FW (6 ea)                                 |
| 21  | 134-890 | 2   | Wood Rail Mtg Hrd: 3/8" x 4-1/2" Carriage Bolt &<br>Nut (6 ea), 3/8" x 2-1/2" Lag Bolt & FW (2 ea) |

(PTO parts are used on units, Serial Number 990 and after.)

**PTO DRIVELINE (internal spline shaft) & FRICTION CLUTCH**

(1000 RPM - 21 SPLINE / 1-3/8" YOKE)



173424

(PTO parts are used on units, Serial Number 990 and after.)

**PTO DRIVELINE (internal spline shaft) & FRICTION CLUTCH****(1000 RPM - 21 SPLINE / 1-3/8" YOKE)**

| REF | PART NO | QTY | DESCRIPTION   |
|-----|---------|-----|---|
| 1   | 173-424 | 1   | PTO Assembly 35R 1000 RPM ( <i>Less Clutch Pack</i> )       |
| 2   | 173-429 | 1   | PTO Outer Joint and Shaft Half with Shield                  |
| 3   | 171-544 | 1   | Spring Slide Lock Repair Kit                                |
| 4   | 172-992 | 1   | Slide Lock Yoke Assembly ( <i>1-3/8"</i> )                  |
| 5   | 172-852 | 2   | Cross and Bearing Kit                                       |
| 6   | 172-303 | 1   | Center Housing  |
| 7   | 172-304 | 1   | Bell Housing with Nylon Centralizer                         |
| 8   | 173-425 | 1   | Yoke and Shaft Assembly                                     |
| 9   | 170-220 | 2   | Nylon Repair Kit  |
| 10  | 171-550 | 1   | Safety Decal  |
| 11  | 172-848 | 1   | Outer Shield  |
| 12  | 173-430 | 1   | Inner Joint and Tube Half with Shield                       |
| 13  | 172-847 | 1   | Inner Shield  |
| 14  | 171-799 | 1   | Safety Decal  |
| 15  | 173-426 | 1   | Yoke Tube and Slip Sleeve                                   |
| 16  | 170-776 | 1   | Cross and Bearing Kit                                       |
| 17  | 173-203 | 1   | Clutch Hub  |
| 18  | 173-199 | 1   | Friction Clutch Assembly; 15,000                            |
| 19  | 173-202 | 1   | Clutch Housing; Mtg Hrd: 5/16" x 1" bolt ( <i>grade 5</i> ) |
| 20  | 173-206 | 1   | Separator Plate   |
| 21  | 173-204 | 1   | Pressure Plate  |
| 22  | 173-208 | 1   | Spring - ( <i>color yellow</i> )                            |
| 23  | 173-205 | 1   | Compression Plate   |
| 24  | 172-860 | 2   | Friction Disk   |
| 25  | 170-369 | 6   | 5/16" x 2-1/2" Bolt ( <i>grade 5</i> )                      |
| 26  | 170-119 | 6   | 5/16" Nut ( <i>grade 5</i> )                                |



(PTO parts are used on units, Serial Number 1076 and after.)

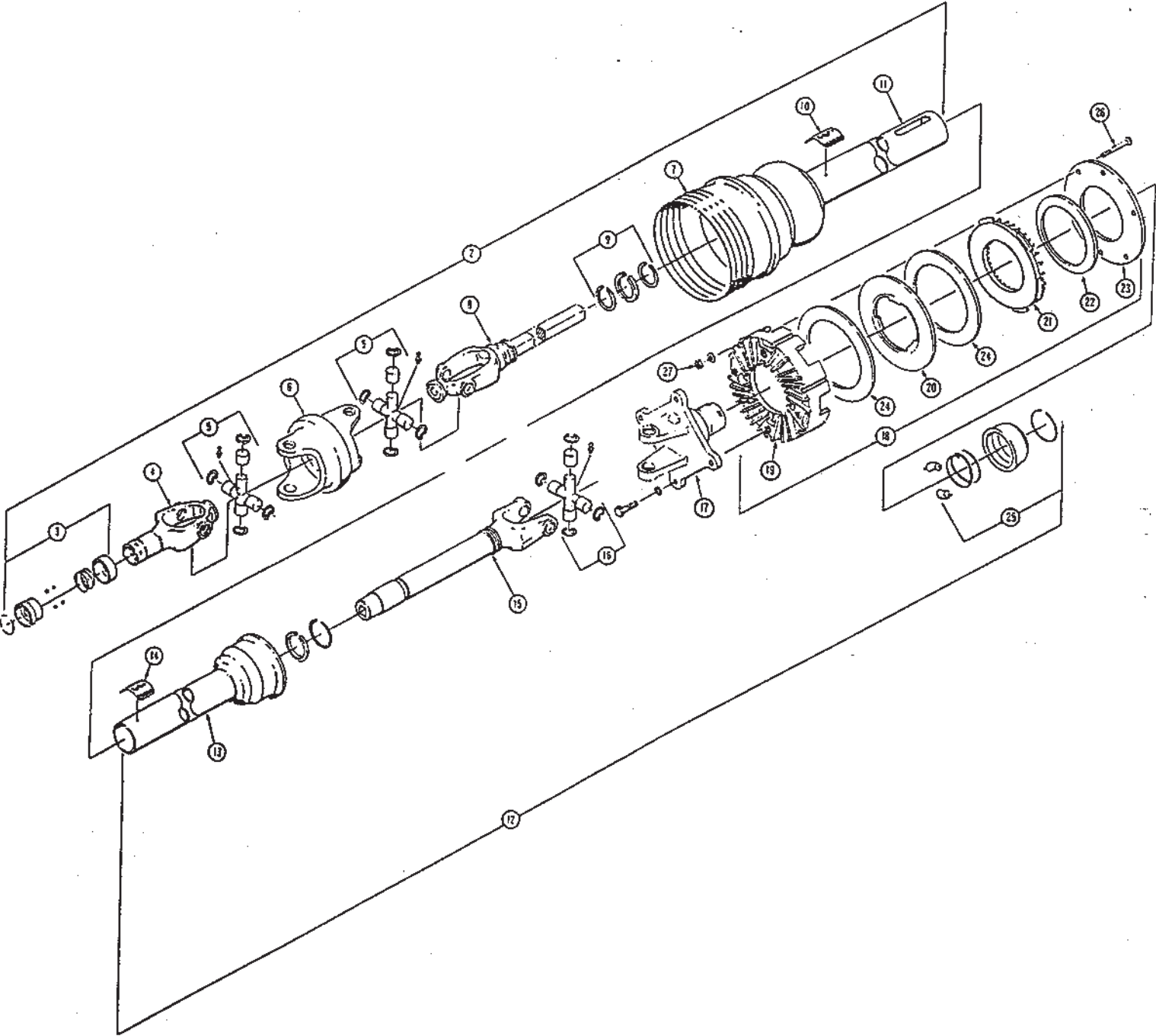
**PTO DRIVELINE (internal spline shaft) & FRICTION CLUTCH****(1000 RPM - 20 SPLINE / 1-3/4" YOKE)**

| REF | PART NO | QTY | DESCRIPTION   |
|-----|---------|-----|---|
| 1   | 173-431 | 1   | PTO Assembly 35R 1000 RPM <i>(Less Clutch Pack)</i>       |
| 2   | 173-432 | 1   | PTO Outer Joint and Shaft Half with Shield                |
| 3   | 172-496 | 1   | Spring Slide Lock Repair Kit                              |
| 4   | 172-851 | 1   | Slide Lock Yoke Assembly <i>(1-3/4")</i>                  |
| 5   | 172-852 | 2   | Cross and Bearing Kit                                     |
| 6   | 172-303 | 1   | Center Housing  |
| 7   | 172-304 | 1   | Bell Housing with Nylon Centralizer                       |
| 8   | 173-434 | 1   | Yoke and Shaft Assembly                                   |
| 9   | 170-220 | 2   | Nylon Repair Kit  |
| 10  | 171-550 | 1   | Safety Decal  |
| 11  | 172-916 | 1   | Outer Shield  |
| 12  | 173-433 | 1   | Inner Joint and Tube Half with Shield                     |
| 13  | 172-994 | 1   | Inner Shield  |
| 14  | 171-799 | 1   | Safety Decal  |
| 15  | 173-435 | 1   | Yoke Tube and Slip Sleeve                                 |
| 16  | 170-776 | 1   | Cross and Bearing Kit                                     |
| 17  | 173-203 | 1   | Clutch Hub  |
| 18  | 172-496 | 1   | Spring Slide Lock Repair Kit                              |
| 19  | 173-199 | 1   | Friction Clutch Assembly; 15,000                          |
| 20  | 173-206 | 1   | Separator Plate   |
| 21  | 173-204 | 1   | Pressure Plate  |
| 22  | 173-208 | 1   | Spring - <i>(color yellow)</i>                            |
| 23  | 173-205 | 1   | Compression Plate   |
| 24  | 172-860 | 2   | Friction Disk   |
| 25  | 170-369 | 6   | 5/16" x 2-1/2" Bolt <i>(grade 5)</i>                      |
| 26  | 170-119 | 6   | 5/16" Nut <i>(grade 5)</i>                                |
| 27  | 173-202 | 1   | Clutch Housing; Mtg Hrd: 5/16" x 1" bolt <i>(grade 5)</i> |

(PTO parts are used on units, Serial Number 765 to 989)

**PTO DRIVELINE & FRICTION CLUTCH**

(1000 RPM - 21 SPLINE / 1-3/8" YOKE)



(PTO parts are used on units, Serial Number 765 to 989)

**PTO DRIVELINE & FRICTION CLUTCH**

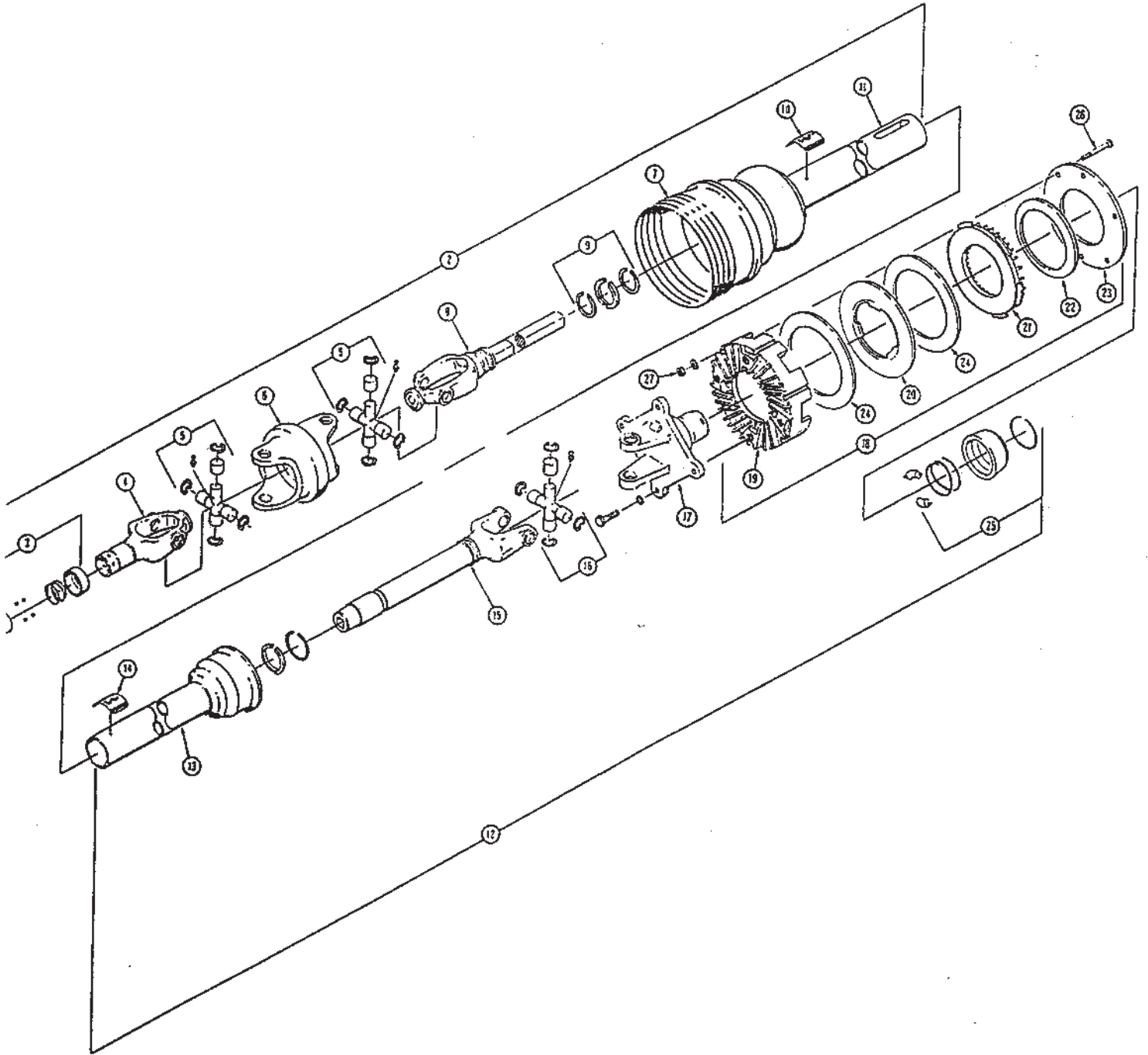
(1000 RPM - 21 SPLINE / 1-3/8" YOKE)

| REF | PART NO | QTY | DESCRIPTION   |
|-----|---------|-----|---|
| 1   | 173-196 | 1   | 80° CV-PTO Assembly ( <i>Less Clutch Pack</i> )             |
| 2   | 172-843 | 1   | Outer Joint and Shaft Half with Guard                       |
| 3   | 171-544 | 1   | Spring Slide Lock Repair Kit                                |
| 4   | 172-992 | 1   | Slide Lock Yoke Assembly (1-3/8")                           |
| 5   | 172-852 | 2   | Cross and Bearing Kit                                       |
| 6   | 172-303 | 1   | Center Housing  |
| 7   | 172-304 | 1   | Bell Housing with Nylon Centralizer                         |
| 8   | 172-846 | 1   | Yoke and Shaft Assembly                                     |
| 9   | 170-220 | 2   | Nylon Repair Kit  |
| 10  | 171-550 | 1   | Safety Decal  |
| 11  | 172-848 | 1   | Outer Guard   |
| 12  | 173-200 | 1   | Inner Joint and Tube Half with Guard                        |
| 13  | 172-847 | 1   | Inner Guard   |
| 14  | 171-799 | 1   | Safety Decal  |
| 15  | 172-845 | 1   | Yoke Tube and Slip Sleeve                                   |
| 16  | 170-776 | 1   | Cross and Bearing Kit                                       |
| 17  | 173-203 | 1   | Clutch Hub  |
| 18  | 173-199 | 1   | Friction Clutch Assembly; 15,000                            |
| 19  | 173-202 | 1   | Clutch Housing' Mtg Hrd: 5/16" x 1" bolt ( <i>grade 5</i> ) |
| 20  | 173-206 | 1   | Separator Plate   |
| 21  | 173-204 | 1   | Pressure Plate  |
| 22  | 173-208 | 1   | Spring - ( <i>color yellow</i> )                            |
| 23  | 173-205 | 1   | Compression Plate   |
| 24  | 172-860 | 2   | Friction Disk   |
| 25  | 171-544 | 1   | Auto Lock Repair Kit  |
| 26  | 170-369 | 6   | 5/16" x 2-1/2" Bolt ( <i>grade 5</i> )                      |
| 27  | 170-119 | 6   | 5/16" Nut ( <i>grade 5</i> )                                |

(PTO parts are used on units, Serial Number 765 to 1075.)

**PTO DRIVELINE & FRICTION CLUTCH**

(1000 RPM - 20 SPLINE / 1-3/4" YOKE)



(PTO parts are used on units, Serial Number 765 to 1075.)

**PTO DRIVELINE & FRICTION CLUTCH**

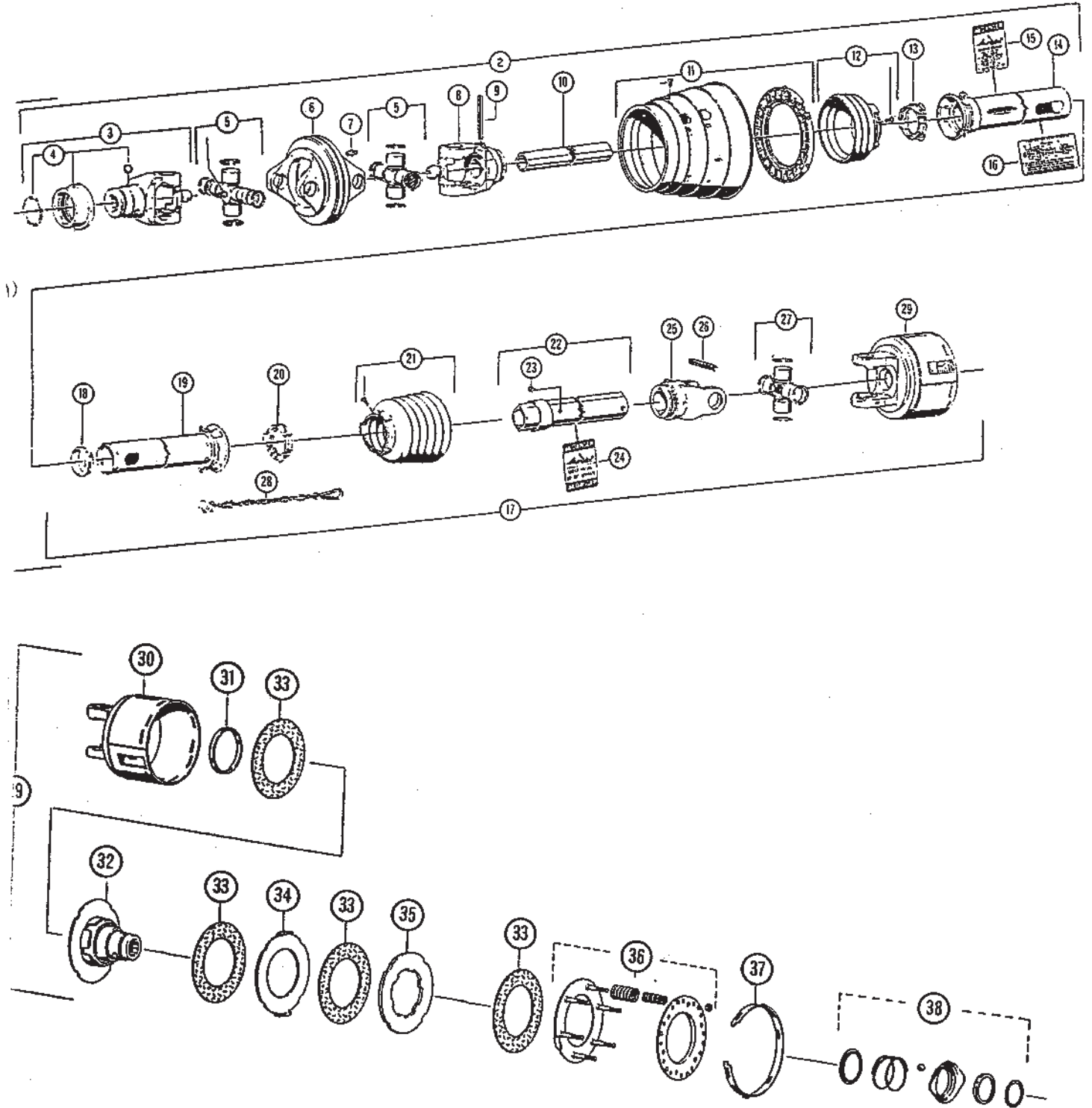
(1000 RPM - 20 SPLINE / 1-3/4" YOKE)

| REF | PART NO | QTY | DESCRIPTION   |
|-----|---------|-----|---|
| 1   | 173-197 | 1   | 80° CV-PTO Assembly ( <i>Less clutch pack</i> )             |
| 2   | 172-841 | 1   | Outer Joint and Shaft Half with Guard                       |
| 3   | 172-496 | 1   | Spring Slide Lock Repair Kit                                |
| 4   | 172-851 | 1   | Slide Lock Yoke Assembly (1-3/4")                           |
| 5   | 172-852 | 2   | Cross and Bearing Kit                                       |
| 6   | 172-303 | 1   | Center Housing  |
| 7   | 172-304 | 1   | Bell Housing with Nylon Centralizer                         |
| 8   | 172-915 | 1   | Yoke and Shaft Assembly                                     |
| 9   | 170-220 | 2   | Nylon Repair Kit  |
| 10  | 171-550 | 1   | Safety Decal  |
| 11  | 172-916 | 1   | Outer Guard   |
| 12  | 173-201 | 1   | Inner Joint and Tube Half with Guard                        |
| 13  | 172-994 | 1   | Inner Guard   |
| 14  | 171-799 | 1   | Safety Decal  |
| 15  | 172-993 | 1   | Yoke Tube and Slip Sleeve                                   |
| 16  | 170-776 | 1   | Cross and Bearing Kit                                       |
| 17  | 173-203 | 1   | Clutch Hub  |
| 18  | 173-199 | 1   | Friction Clutch Assembly; 15,000                            |
| 19  | 173-202 | 1   | Clutch Housing; Mtg Hrd: 5/16" x 1" bolt ( <i>grade 5</i> ) |
| 20  | 173-206 | 1   | Separator Plate   |
| 21  | 173-204 | 1   | Pressure Plate  |
| 22  | 173-208 | 1   | Spring - ( <i>color yellow</i> )                            |
| 23  | 173-205 | 1   | Compression Plate   |
| 24  | 172-860 | 2   | Friction Disk   |
| 25  | 171-544 |     | Auto Lock Repair Kit  |
| 26  | 170-369 | 6   | 5/16" x 2-1/2" Bolt ( <i>grade 5</i> )                      |
| 27  | 170-119 | 6   | 5/16" Nut ( <i>grade 5</i> )                                |

(PTO parts are used on units, Serial Number 764 and before.)

### PTO DRIVELINE & FRICTION CLUTCH

Waltershid Constant Velocity PTO



(PTO parts are used on units, Serial Number 164 and before.)

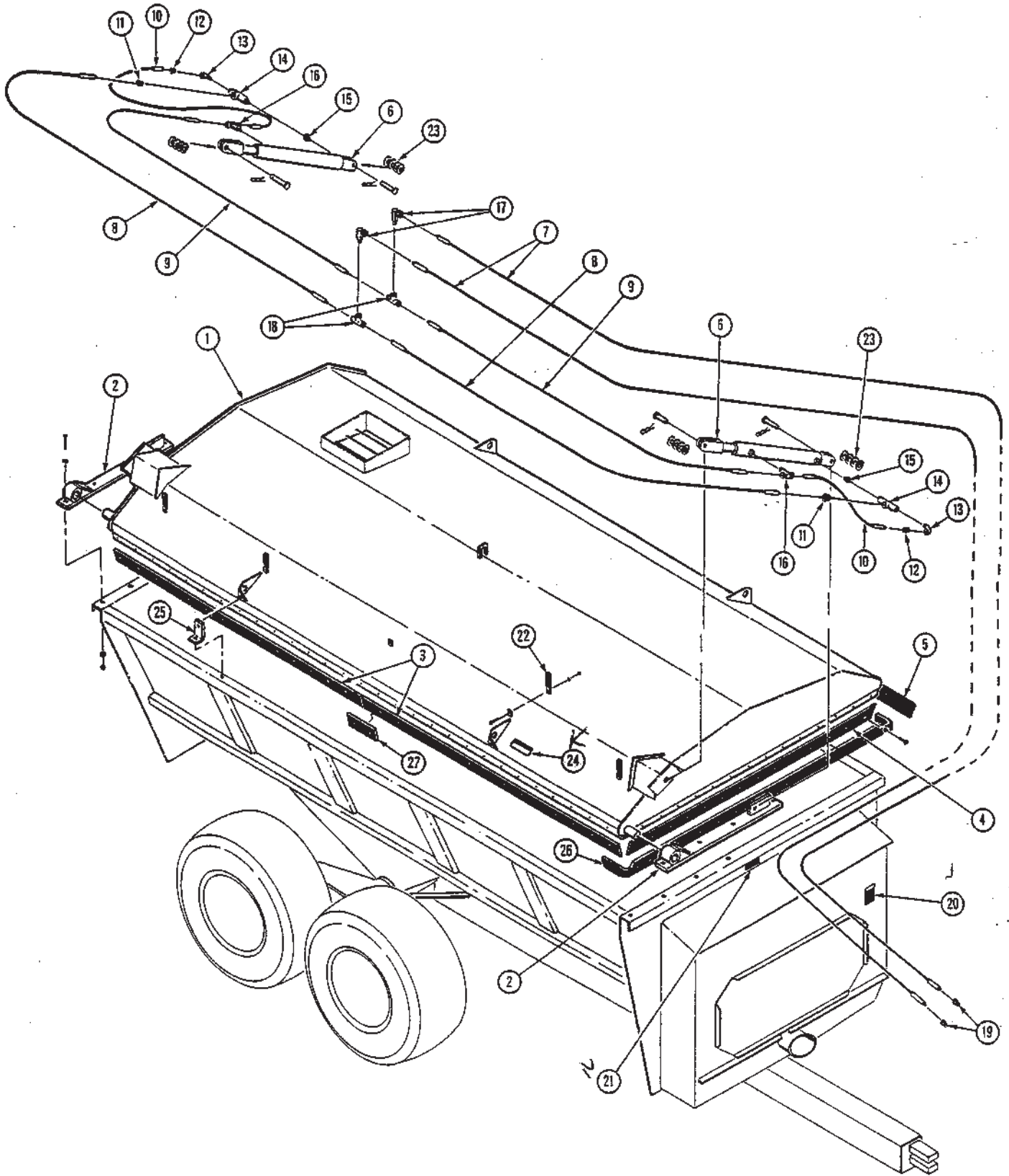
**PTO DRIVELINE & FRICTION CLUTCH**

## Waltershied Constant Velocity PTO

| REF | PART NO | QTY | DESCRIPTION  |
|-----|---------|-----|--|
| 1   | 172-211 | 1   | Wide Angle PTO Drive Shaft W/Shielding (1000 RPM)          |
| 2   | 172-404 | 1   | Male Wide Angle Half Shaft W/Shielding (1000 RPM)          |
| 3   | 172-203 | 1   | End Yoke (1000 RPM) 1-3/8" Option                          |
|     | 172-224 | 1   | End Yoke (1000 RPM) 1-3/4" Option                          |
| 4   | 172-028 | 1   | Quick Disconnect Kit                                       |
| 5   | 172-204 | 2   | Cross & Bearing Kit  |
| 6   | 172-202 | 1   | CV Double Yoke   |
| 7   | 172-208 | 1   | Grease Zerk  |
| 8   | 172-201 | 1   | Inboard Yoke   |
| 9   | 171-983 | 1   | Spring Pin   |
| 10  | 172-196 | 1   | Inner Profile  |
| 11  | 172-205 | 1   | CV Cone & Bearing Assembly; Mtg Hrd: #172-210 Screw (2 ea) |
| 12  | 172-206 | 1   | Shield Cone; Three Rib; Mtg Hrd: #172-210 Screw (3 ea)     |
| 13  | 171-979 | 1   | Bearing Ring   |
| 14  | 172-199 | 1   | Outer Shield Tube W/Cap                                    |
| 15  | 171-550 | 1   | Decal; Danger - Rotating Driveline                         |
| 16  | 172-227 | 1   | Decal; Lubrication Requirements                            |
| 17  | 172-223 | 1   | Female Half Shaft With Shielding                           |
| 18  | 172-207 | 1   | Support Bearing  |
| 19  | 172-198 | 1   | Inner Shield Tube W/Cap                                    |
| 20  | 171-979 | 1   | Bearing Ring   |
| 21  | 172-030 | 1   | Shield Cone; Six Rib; Mtg Hrd: #172-210 Screw (3 ea)       |
| 22  | 172-197 | 1   | Outer Profile & Sleeve                                     |
| 23  | 172-209 | 1   | Grease Zerk  |
| 24  | 171-799 | 1   | Decal; Danger, Shield Missing...                           |
| 25  | 172-033 | 1   | Inboard Yoke   |
| 26  | 171-983 | 1   | Spring Pin   |
| 27  | 171-980 | 1   | Cross & Bearing Kit  |
| 28  | 172-040 | 1   | Safety Chain   |
| 29  | ***_*** | 1   | Friction Clutch, Can't Be Purchased Assembled              |
| 30  | 172-037 | 1   | Clutch Housing   |
| 31  | 172-038 | 1   | Ring   |
| 32  | 172-036 | 1   | Hub & Drive Plate  |
| 33  | 171-977 | 4   | Friction Disk  |
| 34  | 171-976 | 1   | Drive Plate  |
| 35  | 171-975 | 1   | Drive Plate  |
| 36  | 171-974 | 1   | Spring Pack  |
| 37  | 171-978 | 1   | Setting Ring   |
| 38  | 172-029 | 1   | Quick Disconnect Flange Kit                                |

**TOP LID PARTS**

8030-TOW R031097



**TOP LID PARTS**

8030-TOW R031097

| REF | PART NO | QTY | DESCRIPTION   |
|-----|---------|-----|---|
| 1   | 102-285 | 1   | Top Lid Assembly  |
| 2   | 102-073 | 2   | Cylinder Mount - Pivot<br>Mtg Hrd: 1/2" x 1-1/2" Bolt, LN (4 ea), FW (8 ea)                           |
| 3   | 134-943 | 2   | Belt Seal ( <b>Pivot Side Only</b> ); 3-1/2" x 95"<br>Mtg Hrd: 1/4" x 3/4" Truss Head Bolt, 1/4" Nut  |
| 4   | 134-944 | 2   | Belt Seal ( <b>Front &amp; Rear</b> ); 3-1/2" x 87"<br>Mtg Hrd: 1/4" x 3/4" Truss Head Bolt, 1/4" Nut |
| 5   | 134-942 | 2   | Belt Seal ( <b>Load Side Only</b> ); 3-1/2" x 95"<br>Mtg Hrd: 1/4" x 1" Truss Head Bolt, 1/4" Nut     |
| 6   | 170-161 | 2   | Hydraulic Cylinder ( <i>Includes clevis pin &amp; hairpin clip</i> )                                  |
| 7   | 171-460 | 2   | Hydraulic Hose; 1/4" x 294" OAL   |
| 8   | 170-466 | 2   | Hydraulic Hose; 1/4" x 138" OAL   |
| 9   | 171-998 | 2   | Hydraulic Hose; 1/4" x 117" OAL   |
| 10  | 172-794 | 2   | Hydraulic Hose; 1/4" x 20" OAL  |
| 11  | 170-233 | 2   | Swivel Adapter; 3/8"  |
| 12  | 171-251 | 2   | Swivel Adapter; 1/4" To 3/8" Straight   |
| 13  | 172-809 | 2   | Fitting; 90 Deg. Street Elbow, 1/4"   |
| 14  | 172-806 | 2   | Pilot Operated Check Valve  |
| 15  | 172-808 | 2   | Flow Restrictor, 3/8"   |
| 16  | 172-807 | 2   | Swivel Tee Adapter, 3/8"  |
| 17  | 171-030 | 2   | Swivel Adapter; 3/8" x 90 Deg.  |
| 18  | 171-442 | 2   | Tee Adapter; 3/8"   |
| 19  | 170-235 | 2   | Reducer Fitting; 1/2" To 3/8"   |
| 20  | 172-599 | 1   | Decal; Danger - Overhead Wires  |
| 21  | 172-787 | 2   | Decal; Warning - Crushing Under Top. ( <b>Front &amp; Rear</b> )                                      |
| 22  | 171-782 | 4   | Hose Clamp; Mtg Hrd: 5/16" x 1" Bolt, LW, Nut   |
| 23  | 170-122 | A/R | Spacer Washers (Approximately 16 Req'd)   |
| 24  | 172-821 | 1   | Decal; Caution - Do Not Lift Here   |
| 25  | 134-941 | 4   | Hold Down Bracket; Mtg Hrd: 1/2" x 1-1/4" Bolt (1 ea); 1/2" x 1-3/4" Bolt (1 ea); FW, LW, Nut (2 ea)  |
| 26  | 134-994 | 2   | Corner Belt Seal, ( <b>Front &amp; Rear</b> ); 3-1/2" x 98"; Mtg Hrd: 1/4" x 1" Truss Head Bolt & Nut |
| 27  | 134-995 | 1   | Splice Seal, ( <b>Pivot Side Only</b> ), 3-1/2" x 7"; Mtg Hrd: 1/4" x 1" Truss Head Bolt & Nut        |

**DECAL & PAINT LIST**

8030-TOW R031097

The following decals are listed below for your convenience.  
Use the operator's manual for decal location, part number and ordering.

**Unit Decals:**

| PART NO | QTY | DESCRIPTION                              |
|---------|-----|--|
| 172-765 | 1   | DECALS; Complete Set: 8030-TOW           |
| 171-820 | 4   | DANGER; Rotating Auger...                |
| 171-915 | 2   | DANGER; Shield Missing...                |
| 172-599 | 1   | DANGER; Overhead Wires...                |
| 171-821 | 2   | DANGER; Material Discharges...           |
| 172-171 | 1   | CAUTION; Read Operators Manual...        |
| 172-821 | 1   | CAUTION; Do Not Lift...                  |
| 170-849 | 2   | WARNING; Beware of Power Driven Parts... |
| 172-787 | 1   | WARNING; Crushing Under Top...           |
| 171-913 | 1   | WARNING; Do Not Operate...               |
| 170-490 | 1   | Engage PTO Slowly                        |
| 171-712 | 1   | Retighten Set Screws                     |
| 171-992 | 2   | Red Reflector                            |
| 171-993 | 1   | Friction Clutch Adjustment               |
| 172-492 | 2   | "8030"                                   |
| 172-756 | 2   | "ProTwin"                                |
| 172-757 | 2   | "SLINGER"                                |
| 171-902 | 2   | "KNIGHT INDUSTRIAL DIV."                 |
| 170-893 | 1   | Slow Moving Vehicle                      |
| 171-304 | 1   | Door Height Indicator                    |
| 172-785 | 2   | Logo; Knight                             |
| 172-759 | 1   | Patent Numbers                           |

**PTO Driveline Decals:**

|         |   |                                   |
|---------|---|-----------------------------------|
| 172-238 | 1 | DANGER; PTO Caution (Waltersheid) |
| 171-609 | 1 | WARNING; Do Not Exceed 1000 RPM   |

**Paint:**

|         |                          |
|---------|--------------------------|
| 170-367 | Knight Red, Aerosol Can  |
| 170-814 | Knight Red, Quart Can    |
| 170-815 | Knight Red, Gallon Can   |
| 172-760 | Knight Gray, Aerosol Can |
| 172-761 | Knight Gray, Quart Can   |
| 172-762 | Knight Gray, Gallon Can  |

**OPTIONAL KITS**

8030-TOW R031097

**Safety Chain For Towed Equipment P/N 172-041**

This chain is designed to retain the connection between the towing and towed machines in the event of separation of the primary attaching system. It should be used whenever the unit is transported on the highway.

**Light Kit For Towed Equipment**

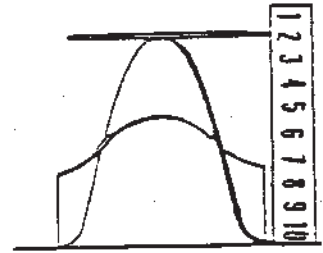
This light kit is designed for lighting and marking of agricultural field equipment whenever the equipment is on a highway. This kit is pre-assembled, and it includes mounting hardware.

| <b>PART NO</b>  | <b>QTY</b> | <b>DESCRIPTION</b>                      |
|-----------------|------------|---|
| 300-007         | 1          | Complete Light Kit - Assembled          |
| 172-173         | 2          | Red And Amber Light Assembly            |
| 172-174         | 36'        | 4 Conductor Wire                        |
| 172-175         | 1          | 4 Pin In-Line Connector (Male & Female) |
| <b>Options:</b> |            |   |
| 172-110         | 1          | 7 Pin Female Connector                  |

## FLIGHTING TERMS AND DIMENSIONS

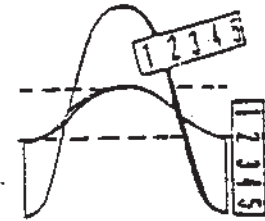
8030-TOW R031097

**OUTSIDE DIAMETER:** Outside diameter can be determined by laying the flight on a flat surface and measuring from the top to the base. **NOTE:** Dimensions may vary slightly.

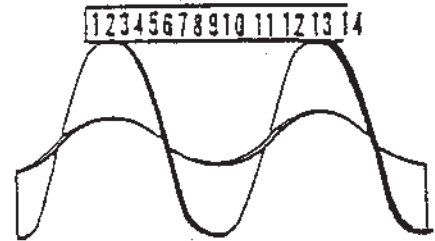


**THICKNESS:** Thickness of flighting can be determined with any linear measuring instrument.

**INSIDE DIAMETER:** To find the inside diameter of flight, measure the distance from the inside of the flight to the peak. Then multiply the dimension by two and subtract the answer from the outside diameter dimension.



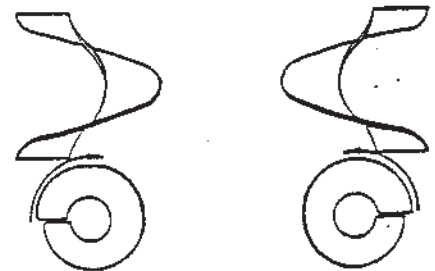
**PITCH:** Pitch is the dimension from one peak to the next, measured along the axis of the shaft. The term full pitch means that the outside diameter and the pitch are the same.



**RIGHT HAND AND LEFT HAND FLIGHTING:** As you look at the face of flighting and it is slanting downward to the right; it is right hand and if it is slanting downward to the left; it is left hand.

Flighting dimensions are written in a series similar to the following:

1/4" - 4" - 14" - 14"  
Thick - I.D. - O.D. - Pitch



**HARDWARE PART NUMBER LISTING**

8030-TOW R031097

All hex head bolts up to and including 7/16" dia are grade 5 unless otherwise specified. All fasteners are NC thread unless otherwise specified.

**HEX NUTS AND WASHERS**

| SIZE   | Hex Nuts | Lock Nuts | Jam Nuts | Flat Washer | Lock Washer |
|--------|----------|-----------|----------|-------------|-------------|
| #10-32 | 171-606  |           |          | 171-525     | 171-605     |
| 1/4"   | 170-125  | 170-069   | 171-386  | 170-301     | 170-124     |
| 5/16"  | 170-119  | 170-028   |          | 170-127     | 170-118     |
| 3/8"   | 170-007  | 170-047   | 170-022  | 170-244     | 170-006     |
| 7/16"  | 170-062  | 170-239   | 170-046  | 170-138     | 170-061     |
| 1/2"   | 170-004  | 170-042   | 170-036  | 170-040     | 170-003     |
| 5/8"   | 170-011  | 170-031   | 170-037  | 170-066     | 170-010     |
| 3/4"   | 170-017  | 170-185   | 170-035  | 170-015     | 170-016     |
| 7/8"   | 171-776  |           |          | 170-131     | 172-003     |
| 1"     |          |           |          | 170-122     | 171-021     |

**HEX HEAD BOLTS**

| Bolt Size                     | Part No |
|-------------------------------|---------|
| 1/4 x 3/4                     | 170-803 |
| 1/4 x 7/8                     | 171-094 |
| 1/4 x 1                       | 170-310 |
| 1/4 x 1-1/2                   | 170-068 |
| 1/4 x 2-3/4                   | 171-203 |
| 1/4 x 3                       | 171-403 |
| 5/16 x 5/8                    | 170-532 |
| 5/16 x 3/4                    | 170-262 |
| 5/16 x 7/8                    | 170-256 |
| 5/16 x 1                      | 170-027 |
| 5/16 x 1-1/4                  | 170-188 |
| 5/16 x 1-1/2                  | 170-372 |
| 5/16 x 1-3/4                  | 170-263 |
| 5/16 x 2                      | 170-376 |
| 5/16 x 2-1/2                  | 170-369 |
| 5/16 x 3                      | 170-295 |
| 5/16 x 3-1/4                  | 171-639 |
| 5/16 x 4 (Tap Bolt)           | 170-293 |
| 5/16 x 4-1/2                  | 170-294 |
| 3/8 x 3/4                     | 170-439 |
| 3/8 x 7/8                     | 170-268 |
| 3/8 x 7/8 (soc. hd. capscrew) | 172-044 |
| 3/8 x 1                       | 170-054 |
| 3/8 x 1 (RH. Machine screw)   | 170-347 |
| 3/8 x 1-1/4                   | 170-005 |
| 3/8 x 1-1/2                   | 170-368 |
| 3/8 x 1-3/4                   | 172-383 |
| 3/8 x 2                       | 170-245 |
| 3/8 x 2-1/4                   | 170-320 |
| 3/8 x 2-1/4 (Round Head)      | 170-375 |
| 3/8 x 2-1/2                   | 170-257 |

|                              |         |
|------------------------------|---------|
| 3/8 x 2-1/2 (Full thread)    | 170-128 |
| 3/8 x 3                      | 170-380 |
| 3/8 x 3-1/2                  | 170-292 |
| 3/8 x 4                      | 170-877 |
| 3/8 x 4-1/2                  | 170-519 |
| 3/8 x 4-1/2 (Gr 5-Black ox.) | 171-318 |
| 3/8 x 5                      | 170-493 |
| 3/8 x 5-1/2                  | 170-593 |
| 3/8 x 6-1/2                  | 171-291 |
| 7/16 x 3/4                   | 170-265 |
| 7/16 x 1                     | 170-032 |
| 7/16 x 1-1/4                 | 170-354 |
| 7/16 x 1-1/2                 | 170-059 |
| 7/16 x 2                     | 170-356 |
| 7/16 x 2-1/2                 | 170-379 |
| 7/16 x 3                     | 170-270 |
| 7/16 x 5-1/2                 | 170-377 |
| 7/16 x 6                     | 170-378 |
| 1/2 x 3/4                    | 171-252 |
| 1/2 x 1                      | 170-149 |
| 1/2 x 1-1/4                  | 170-373 |
| 1/2 x 1-1/2                  | 170-002 |
| 1/2 x 1-3/4                  | 171-774 |
| 1/2 x 2                      | 170-050 |
| 1/2 x 2 (cap screw GR 5)     | 171-802 |
| 1/2 x 2-1/4                  | 172-387 |
| 1/2 x 2-1/2                  | 170-319 |
| 1/2 x 2-1/2 (tap bolt)       | 171-099 |
| 1/2 x 2-1/2 (Grade 5)        | 170-885 |
| 1/2 x 2-3/4                  | 172-007 |
| 1/2 x 3                      | 170-168 |
| 1/2 x 3 (Grade 5)            | 172-490 |
| 1/2 x 3-1/2                  | 170-167 |

|                              |         |
|------------------------------|---------|
| 1/2 x 4                      | 171-509 |
| 1/2 x 4-1/2                  | 171-573 |
| 1/2 x 5                      | 171-412 |
| 1/2 x 8-1/2                  | 170-504 |
| 1/2 x 11                     | 170-506 |
| 5/8 x 1 (G.5)                | 171-087 |
| 5/8 x 1-1/4                  | 171-366 |
| 5/8 x 1-1/2                  | 170-153 |
| 5/8 x 1-3/4 (Tap Bolt- Gr 5) | 170-030 |
| 5/8 x 2 (Grade 5)            | 170-009 |
| 5/8 x 2 (Tap Bolt)           | 171-772 |
| 5/8 x 2-1/2 (Tap Bolt)       | 170-129 |
| 5/8 x 2-1/2                  | 172-381 |
| 5/8 x 3                      | 170-258 |
| 5/8 x 3-1/2                  | 170-038 |
| 5/8 x 2-3/4                  | 172-356 |
| 5/8 x 4                      | 170-371 |
| 5/8 x 4-1/2                  | 170-067 |
| 5/8 x 5                      | 170-065 |
| 5/8 x 5-1/2 (Grade 5)        | 172-421 |
| 5/8 x 6                      | 170-381 |
| 5/8 x 9-1/2                  | 171-039 |
| 3/4 x 2                      | 170-058 |
| 3/4 x 2 (Grade 5)            | 171-768 |

**HEX HEAD BOLTS CONT....**

|                             |         |
|-----------------------------|---------|
| 3/4 x 2 (Grade 8) .....     | 171-877 |
| 3/4 x 2-1/4 .....           | 171-275 |
| 3/4 x 2-1/2 .....           | 170-374 |
| 3/4 x 3 .....               | 170-014 |
| 3/4 x 3-1/2 .....           | 170-195 |
| 3/4 x 3-1/2 (Grade 8) ..... | 171-899 |
| 3/4 x 4 .....               | 170-419 |
| 3/4 x 4-1/2 (Grade 5) ..... | 170-846 |
| 3/4 x 6 (Grade 5) .....     | 171-116 |

**TRUSS HEAD BOLTS**

|                          |         |
|--------------------------|---------|
| #6-32 x 3/4 .....        | 172-416 |
| #8-32 x 1-1/2 .....      | 171-210 |
| #10-32 x 3/4 .....       | 171-604 |
| #10-32 x 1 .....         | 172-882 |
| 1/4 x 1/2 .....          | 170-123 |
| 1/4 x 3/4 .....          | 170-193 |
| 1/4 x 1 .....            | 170-194 |
| 5/16 x 1 (Grade 5) ..... | 170-117 |

**CARRIAGE BOLTS**

|                    |         |
|--------------------|---------|
| 1/4 x 1-1/4 .....  | 170-311 |
| 1/4 x 1-1/2 .....  | 170-355 |
| 1/4 x 2 .....      | 170-299 |
| 1/4 x 2-1/2 .....  | 171-394 |
| 1/4 x 2-3/4 .....  | 170-508 |
| 1/4 x 3 .....      | 170-509 |
| 5/16 x 1 .....     | 170-370 |
| 5/16 x 1-1/2 ..... | 170-296 |
| 5/16 x 2-1/2 ..... | 171-395 |
| 5/16 x 5-1/2 ..... | 170-494 |
| 3/8 x 3-1/2 .....  | 171-283 |
| 3/8 x 4-1/2 .....  | 170-191 |
| 3/8 x 5 .....      | 170-495 |
| 3/8 x 6-1/2 .....  | 171-174 |
| 3/8 x 8 .....      | 170-297 |
| 3/8 x 13-1/2 ..... | 170-300 |
| 1/2 x 6-1/2 .....  | 171-098 |
| 1/2 x 9 .....      | 171-255 |

**ZERKS**

|                   |         |
|-------------------|---------|
| 1/4-28 .....      | 170-023 |
| 1/4-28 - 45 ..... | 170-148 |
| 1/4-28 - 90 ..... | 170-049 |
| 1/4 NPT .....     | 170-277 |
| 1/8 NPT .....     | 170-865 |
| 1/8 NPT-45 .....  | 170-864 |
| 1/8 NPT-65 .....  | 170-215 |
| 1/8 NPT-90 .....  | 170-866 |

**COTTER PINS**

|                   |         |
|-------------------|---------|
| 1/16 x 1/2 .....  | 170-992 |
| 3/32 x 3/4 .....  | 170-364 |
| 1/8 x 3/4 .....   | 170-177 |
| 1/8 x 1 .....     | 170-045 |
| 1/8 x 1-1/4 ..... | 170-033 |
| 1/8 x 1-1/2 ..... | 170-382 |

|                    |         |
|--------------------|---------|
| 5/32 x 1 .....     | 170-421 |
| 5/32 x 1-1/2 ..... | 170-236 |
| 5/32 x 3 .....     | 170-135 |

|                                |         |
|--------------------------------|---------|
| 3/16 x 1-1/4 .....             | 170-991 |
| 3/16 x 1-1/2 (linch pin) ..... | 170-800 |
| 3/16 x 2 .....                 | 170-115 |

|                    |         |
|--------------------|---------|
| 7/32 x 1-3/4 ..... | 171-834 |
|--------------------|---------|

|                   |         |
|-------------------|---------|
| 1/4 x 1-1/2 ..... | 170-521 |
| 1/4 x 2 .....     | 170-056 |

**SET SCREWS**

|                      |         |
|----------------------|---------|
| 1/4 x 1/4 .....      | 170-247 |
| 5/16 x 5/16 .....    | 170-248 |
| 5/16 x 1/2 .....     | 170-254 |
| 5/16 x 1/4 NF .....  | 170-993 |
| 5/16 x 5/16 NF ..... | 170-825 |
| 5/16 x 5/8 NF .....  | 170-456 |

|                                 |         |
|---------------------------------|---------|
| 3/8 x 1/4 .....                 | 170-856 |
| 3/8 x 3/8 .....                 | 170-151 |
| 3/8 x 1/2 (nylock) .....        | 170-857 |
| 3/8 x 3/4 (sq head) .....       | 170-289 |
| 3/8 x 3/4 (sq hd drilled) ..... | 170-290 |
| 3/8 x 1 .....                   | 170-021 |
| 3/8 x 1/2 NF .....              | 171-469 |

|                          |         |
|--------------------------|---------|
| 7/16 x 7/16 .....        | 170-288 |
| 7/16 x 1 (sq head) ..... | 170-147 |

|                                    |         |
|------------------------------------|---------|
| 1/2 x 5/8 .....                    | 170-249 |
| 1/2 x 1 .....                      | 170-438 |
| 1/2 x 1-1/4 (half dog point) ..... | 171-085 |

|                 |         |
|-----------------|---------|
| 5/8 x 5/8 ..... | 170-250 |
|-----------------|---------|

|                           |         |
|---------------------------|---------|
| 3/4 X 3/4 (knurled) ..... | 170-251 |
|---------------------------|---------|

**ROLLER CHAIN**

**CONNECTOR LINKS**

| Size .....   | Part No |
|--------------|---------|
| #50-2R ..... | 170-094 |
| #50 .....    | 170-088 |
| #60-2R ..... | 170-095 |
| #60 .....    | 170-089 |
| #60H .....   | 171-102 |
| #80 .....    | 170-090 |
| #80H .....   | 170-821 |
| #100 .....   | 170-091 |
| #100H .....  | 171-969 |
| #120 .....   | 170-092 |
| #140 .....   | 170-093 |
| #160 .....   | 170-888 |

**OFFSET LINKS**

|                         |         |
|-------------------------|---------|
| #50 .....               | 170-096 |
| #50-Double roller ..... | 170-102 |
| #60-Double roller ..... | 170-103 |
| #60 .....               | 170-097 |
| #80 .....               | 170-098 |
| #80H .....              | 170-820 |
| #100 .....              | 170-099 |
| #120 .....              | 170-100 |
| #140 .....              | 170-101 |
| #160 .....              | 170-887 |

**ROLLER LINKS**

|             |         |
|-------------|---------|
| #50 .....   | 171-415 |
| #60 .....   | 171-416 |
| #80 .....   | 171-417 |
| #80H .....  | 170-795 |
| #100 .....  | 171-418 |
| #100H ..... | 172-146 |
| #120 .....  | 171-419 |
| #140 .....  | 171-420 |
| #160 .....  | 172-421 |

**PART NUMBER INDEX**

8030-TOW R031097

|         |      |
|---------|------|
| 101-548 | 7    |
| 101-549 | 7    |
| 101-586 | 7    |
| 101-636 | 7    |
| 101-761 | 3    |
| 101-911 | 11   |
| 101-911 | 3,11 |
| 101-988 | 7    |
| 102-044 | 11   |
| 102-046 | 9    |
| 102-047 | 9    |
| 102-048 | 9    |
| 102-049 | 9    |
| 102-050 | 13   |
| 102-051 | 13   |
| 102-052 | 13   |
| 102-053 | 13   |
| 102-054 | 13   |
| 102-055 | 13   |
| 102-056 | 13   |
| 102-057 | 11   |
| 102-058 | 11   |
| 102-059 | 7    |
| 102-060 | 13   |
| 102-061 | 7    |
| 102-063 | 11   |
| 102-064 | 11   |
| 102-065 | 9    |
| 102-066 | 9    |
| 102-069 | 5    |
| 102-072 | 17   |
| 102-073 | 17   |
| 130-369 | 3    |
| 133-277 | 7    |
| 133-278 | 11   |
| 133-376 | 3    |
| 133-556 | 13   |
| 133-557 | 13   |
| 133-899 | 11   |
| 134-086 | 5,11 |
| 134-155 | 3    |
| 134-481 | 11   |
| 134-602 | 3    |
| 134-666 | 7    |
| 134-780 | 3    |
| 134-782 | 3    |
| 134-783 | 13   |
| 134-784 | 13   |
| 134-785 | 7    |
| 134-786 | 3    |
| 134-787 | 3    |
| 134-788 | 3    |
| 134-789 | 3    |
| 134-790 | 3    |
| 134-792 | 11   |
| 134-824 | 9    |
| 134-831 | 7    |
| 134-834 | 3    |
| 134-835 | 13   |
| 134-840 | 5    |
| 134-842 | 3    |
| 134-843 | 9    |
| 134-860 | 13   |
| 134-861 | 13   |
| 134-874 | 7    |
| 134-875 | 7    |
| 134-876 | 3    |
| 134-878 | 7    |
| 134-883 | 3    |
| 134-889 | 3    |
| 134-890 | 13   |
| 134-891 | 5    |
| 134-893 | 11   |
| 134-897 | 13   |
| 134-898 | 3    |
| 134-906 | 3    |
| 134-908 | 5    |
| 134-919 | 5    |
| 134-941 | 17   |
| 134-942 | 17   |
| 134-943 | 17   |
| 134-944 | 17   |
| 134-981 | 5    |
| 134-994 | 17   |
| 134-995 | 17   |
| 135-604 | 5    |
| 170-002 | 21   |

|         |          |
|---------|----------|
| 170-003 | 21       |
| 170-004 | 7        |
| 170-004 | 21       |
| 170-005 | 21       |
| 170-006 | 21       |
| 170-007 | 21       |
| 170-008 | 3,7      |
| 170-009 | 21       |
| 170-010 | 21       |
| 170-011 | 21       |
| 170-014 | 21       |
| 170-015 | 21       |
| 170-016 | 21       |
| 170-017 | 21       |
| 170-021 | 22       |
| 170-022 | 21       |
| 170-023 | 22       |
| 170-027 | 21       |
| 170-028 | 21       |
| 170-030 | 7,21     |
| 170-031 | 21       |
| 170-032 | 21       |
| 170-033 | 22       |
| 170-035 | 21       |
| 170-036 | 21       |
| 170-037 | 7,21     |
| 170-038 | 21       |
| 170-040 | 21       |
| 170-042 | 11,13,21 |
| 170-045 | 22       |
| 170-046 | 21       |
| 170-047 | 21       |
| 170-049 | 22       |
| 170-050 | 21       |
| 170-052 | 3        |
| 170-054 | 21       |
| 170-056 | 9,22     |
| 170-058 | 21       |
| 170-059 | 21       |
| 170-061 | 21       |
| 170-062 | 21       |
| 170-065 | 21       |
| 170-066 | 21       |
| 170-067 | 21       |
| 170-068 | 21       |
| 170-069 | 21       |
| 170-073 | 7        |
| 170-074 | 7        |
| 170-075 | 7        |
| 170-088 | 22       |
| 170-089 | 22       |
| 170-090 | 22       |
| 170-091 | 22       |
| 170-092 | 22       |
| 170-093 | 22       |
| 170-094 | 22       |
| 170-095 | 22       |
| 170-096 | 22       |
| 170-097 | 22       |
| 170-098 | 22       |
| 170-099 | 22       |
| 170-100 | 22       |
| 170-101 | 22       |
| 170-103 | 22       |
| 170-115 | 7        |
| 170-115 | 22       |
| 170-117 | 22       |
| 170-118 | 21       |
| 170-119 | 21       |
| 170-122 | 17,21    |
| 170-123 | 22       |
| 170-124 | 21       |
| 170-125 | 9        |
| 170-125 | 21       |
| 170-127 | 21       |
| 170-131 | 21       |
| 170-135 | 22       |
| 170-138 | 21       |
| 170-147 | 22       |
| 170-148 | 22       |
| 170-151 | 3,22     |
| 170-161 | 17       |
| 170-168 | 11,21    |
| 170-177 | 22       |
| 170-185 | 21       |
| 170-188 | 21       |
| 170-191 | 22       |

|         |      |
|---------|------|
| 170-193 | 22   |
| 170-194 | 22   |
| 170-195 | 21   |
| 170-215 | 22   |
| 170-233 | 17   |
| 170-235 | 17   |
| 170-236 | 9,22 |
| 170-239 | 21   |
| 170-244 | 21   |
| 170-245 | 21   |
| 170-247 | 22   |
| 170-248 | 22   |
| 170-249 | 3,22 |
| 170-250 | 22   |
| 170-254 | 22   |
| 170-256 | 21   |
| 170-257 | 21   |
| 170-258 | 21   |
| 170-262 | 21   |
| 170-263 | 21   |
| 170-265 | 21   |
| 170-268 | 21   |
| 170-270 | 21   |
| 170-277 | 22   |
| 170-288 | 22   |
| 170-289 | 22   |
| 170-290 | 22   |
| 170-292 | 21   |
| 170-293 | 21   |
| 170-294 | 21   |
| 170-295 | 21   |
| 170-297 | 22   |
| 170-301 | 21   |
| 170-310 | 5    |
| 170-310 | 21   |
| 170-319 | 7,21 |
| 170-354 | 21   |
| 170-355 | 22   |
| 170-356 | 21   |
| 170-364 | 22   |
| 170-365 | 3    |
| 170-367 | 18   |
| 170-368 | 21   |
| 170-369 | 21   |
| 170-370 | 22   |
| 170-371 | 21   |
| 170-372 | 21   |
| 170-373 | 21   |
| 170-374 | 21   |
| 170-376 | 21   |
| 170-377 | 21   |
| 170-378 | 21   |
| 170-379 | 21   |
| 170-380 | 21   |
| 170-381 | 21   |
| 170-382 | 22   |
| 170-419 | 21   |
| 170-421 | 22   |
| 170-438 | 22   |
| 170-439 | 21   |
| 170-445 | 11   |
| 170-456 | 22   |
| 170-466 | 17   |
| 170-471 | 7    |
| 170-478 | 5    |
| 170-490 | 18   |
| 170-493 | 21   |
| 170-495 | 22   |
| 170-509 | 9,22 |
| 170-519 | 21   |
| 170-521 | 22   |
| 170-532 | 21   |
| 170-579 | 5    |
| 170-593 | 21   |
| 170-607 | 11   |
| 170-795 | 22   |
| 170-800 | 5,11 |
| 170-803 | 21   |
| 170-814 | 18   |
| 170-815 | 18   |
| 170-820 | 22   |
| 170-821 | 22   |
| 170-825 | 22   |
| 170-835 | 3,7  |
| 170-845 | 5,11 |
| 170-846 | 21   |
| 170-849 | 18   |

|         |        |
|---------|--------|
| 170-856 | 22     |
| 170-857 | 22     |
| 170-864 | 22     |
| 170-865 | 5,9,22 |
| 170-866 | 22     |
| 170-877 | 21     |
| 170-887 | 22     |
| 170-888 | 22     |
| 170-893 | 18     |
| 170-919 | 9      |
| 170-920 | 9      |
| 170-921 | 9      |
| 170-922 | 9      |
| 170-926 | 9      |
| 170-927 | 9      |
| 170-928 | 9      |
| 170-934 | 11     |
| 170-950 | 11     |
| 170-991 | 22     |
| 170-992 | 22     |
| 170-993 | 22     |
| 171-021 | 21     |
| 171-030 | 17     |
| 171-039 | 21     |
| 171-045 | 5      |
| 171-085 | 22     |
| 171-087 | 21     |
| 171-094 | 21     |
| 171-098 | 22     |
| 171-102 | 22     |
| 171-116 | 21     |
| 171-149 | 21     |
| 171-174 | 22     |
| 171-203 | 21     |
| 171-210 | 22     |
| 171-251 | 17     |
| 171-252 | 21     |
| 171-255 | 22     |
| 171-275 | 21     |
| 171-283 | 22     |
| 171-291 | 21     |
| 171-304 | 18     |
| 171-362 | 9      |
| 171-366 | 21     |
| 171-393 | 5      |
| 171-394 | 22     |
| 171-395 | 22     |
| 171-403 | 21     |
| 171-412 | 21     |
| 171-415 | 22     |
| 171-416 | 22     |
| 171-417 | 22     |
| 171-419 | 22     |
| 171-420 | 22     |
| 171-442 | 17     |
| 171-460 | 17     |
| 171-464 | 7      |
| 171-469 | 22     |
| 171-509 | 21     |
| 171-525 | 21     |
| 171-550 | 15     |
| 171-573 | 21     |
| 171-586 | 7      |
| 171-604 | 22     |
| 171-605 | 21     |
| 171-606 | 21     |
| 171-609 | 18     |
| 171-610 | 9      |
| 171-611 | 9      |
| 171-612 | 9      |
| 171-613 | 9      |

**PART NUMBER INDEX**

8030-TOW R031097

|         |      |         |       |
|---------|------|---------|-------|
| 171-614 | 9    | 172-484 | 5     |
| 171-615 | 9    | 172-485 | 3     |
| 171-639 | 21   | 172-489 | 3     |
| 171-712 | 18   | 172-492 | 18    |
| 171-764 | 11   | 172-599 | 17,18 |
| 171-772 | 21   | 172-751 | 5,11  |
| 171-782 | 17   | 172-752 | 7     |
| 171-799 | 15   | 172-756 | 18    |
| 171-802 | 13   | 172-757 | 18    |
| 171-814 | 9    | 172-759 | 18    |
| 171-820 | 18   | 172-760 | 18    |
| 171-821 | 18   | 172-761 | 18    |
| 171-877 | 21   | 172-762 | 18    |
| 171-900 | 21   | 172-765 | 18    |
| 171-902 | 18   | 172-772 | 7     |
| 171-913 | 18   | 172-785 | 18    |
| 171-915 | 18   | 172-787 | 17,18 |
| 171-919 | 5    | 172-794 | 17    |
| 171-929 | 5    | 172-806 | 17    |
| 171-930 | 11   | 172-807 | 17    |
| 171-935 | 5,11 | 172-808 | 17    |
| 171-969 | 22   | 172-809 | 17    |
| 171-972 | 5    | 172-821 | 17,18 |
| 171-974 | 15   | 172-822 | 5     |
| 171-975 | 15   | 172-823 | 5     |
| 171-976 | 15   | 172-884 | 5     |
| 171-977 | 15   | 180-630 | 5     |
| 171-978 | 15   | 300-007 | 19    |
| 171-979 | 15   |         |       |
| 171-979 | 15   |         |       |
| 171-980 | 15   |         |       |
| 171-983 | 15   |         |       |
| 171-989 | 3    |         |       |
| 171-989 | 11   |         |       |
| 171-990 | 3    |         |       |
| 171-992 | 18   |         |       |
| 171-993 | 18   |         |       |
| 171-998 | 17   |         |       |
| 172-003 | 21   |         |       |
| 172-005 | 5    |         |       |
| 172-024 | 5    |         |       |
| 172-028 | 15   |         |       |
| 172-029 | 15   |         |       |
| 172-030 | 15   |         |       |
| 172-033 | 15   |         |       |
| 172-036 | 15   |         |       |
| 172-037 | 15   |         |       |
| 172-038 | 15   |         |       |
| 172-040 | 15   |         |       |
| 172-041 | 19   |         |       |
| 172-110 | 19   |         |       |
| 172-171 | 18   |         |       |
| 172-173 | 19   |         |       |
| 172-174 | 19   |         |       |
| 172-175 | 19   |         |       |
| 172-196 | 15   |         |       |
| 172-197 | 15   |         |       |
| 172-198 | 15   |         |       |
| 172-199 | 15   |         |       |
| 172-201 | 15   |         |       |
| 172-202 | 15   |         |       |
| 172-203 | 15   |         |       |
| 172-204 | 15   |         |       |
| 172-205 | 15   |         |       |
| 172-206 | 15   |         |       |
| 172-207 | 15   |         |       |
| 172-208 | 15   |         |       |
| 172-209 | 15   |         |       |
| 172-210 | 15   |         |       |
| 172-211 | 15   |         |       |
| 172-223 | 15   |         |       |
| 172-224 | 15   |         |       |
| 172-227 | 15   |         |       |
| 172-238 | 18   |         |       |
| 172-288 | 3    |         |       |
| 172-312 | 9    |         |       |
| 172-355 | 3    |         |       |
| 172-360 | 9    |         |       |
| 172-361 | 9    |         |       |
| 172-364 | 3    |         |       |
| 172-381 | 21   |         |       |
| 172-396 | 9    |         |       |
| 172-404 | 15   |         |       |
| 172-421 | 7    |         |       |
| 172-422 | 7    |         |       |
| 172-481 | 9    |         |       |
| 172-483 | 3    |         |       |

This page intentionally left blank.

## KNIGHT TRACKS

| Item | P/N   | Description                                     | Qty |
|------|-------|---|-----|
| 1.   | 93027 | HHCS, 5/16 - 18 X 3/4, GR5                      | 16  |
| 2.   | 58033 | DUST CAP  | 4   |
| 3.   | 52059 | GASKET, 58015 HUB                               | 4   |
| 4.   | 93574 | 2 - 12 SLOTTED HEX NUT                          | 4   |
| 5.   | 93700 | PIN, COTTER, 5/16 X 3                           | 4   |
| 6.   | 93650 | FLAT WASHER, 2" I.D.                            | 4   |
| 7.   | 58030 | BEARING, OUTER CONE                             | 4   |
| 8.   | 93553 | NUT, 3/4 - 16, FLANGED                          | 4   |
| 9.   | 58027 | BEARING, OUTER CUP                              | 40  |
| 10.  | 58015 | HUB, COMPLETE                                   | 4   |
| 11.  | 93415 | WHEEL STUD                                      | 4   |
| 12.  | 58018 | BEARING, INNER CUP                              | 40  |
| 13.  | 58021 | BEARING, INNER CONE                             | 4   |
| 14.  | 58024 | SEAL, INNER                                     | 4   |
| 15.  | 11338 | SPINDLE, ADJUSTABLE                             | 4   |
| 16.  | 93458 | NUT, 3/4 - 10, HEX, UNC, PLATED                 | 4   |
| 17.  | 35298 | SHIM, ADJUSTABLE SPINDLE                        | 40  |
| 18.  | 35299 | SHIM, ADJUSTABLE SPINDLE                        | 8   |
| 19.  | 35463 | SHIM, ADJUSTABLE SPINDLE                        | 8   |
| 20.  | 93134 | HHCS, 3/4 - 10 X 3, GR5, PLATED                 | 16  |
| 21.  | 35302 | PLATE, ADJUSTABLE SPINDLE MOUNTING              | 40  |
| 22.  | 35494 | TENSIONER, TRACK BOLSTER                        | 2   |
| 23.  | 11808 | BOLSTER, LH                                     | 4   |
| 24.  | 36720 | BUSHING, PIVOT                                  | 1   |
| 25.  | 11807 | BOLSTER, RH                                     | 2   |
| 26.  | 93214 | BOLT, CARR, 1/2 - 13 X 1, GR5, PLATED           | 1   |
| 27.  | 93525 | NUT, 1/2 - 13, WHIZLOC, SERRATED FLANGE, PLATED | 8   |
| 28.  | 36730 | SUPPORT, SHIELD                                 | 8   |
| 29.  | 24573 | SHIELD, BOGIE WHEEL                             | 2   |
| 30.  | 93189 | BOLT, CARR, 3/8 - 16 X 1, GR5, PLATED           | 2   |
| 31.  | 36719 | ANGLE, SHIELD SUPPORT                           | 8   |
| 32.  | 93523 | NUT, 3/8 - 16, WHIZLOC                          | 2   |
| 33.  | 46010 | ELBOW, 1/8 NPT 90° STR STL                      | 8   |
| 34.  | 93809 | ZERK, 1/8 NPT, ST X SHORT, PLATED               | 2   |
| 35.  | 53105 | TRACK, 228" DOUBLE LUG, 30" WIDE                | 2   |
| 36.  | 36243 | WHEEL, TRACK                                    | 2   |
| 37.  | 43206 | PLUG, 3/4 NPT SOCKET HEAD                       | 4   |
| 38.  | 52521 | ROLLER HUB CAP ASSEMBLY                         | 8   |
| 39.  | 93570 | NUT, 7/8 - 14, HEX SLOTTED, GR5, UNF            | 8   |
| 40.  | 93679 | PIN, COTTER, 3/16 X 1-1/2                       | 8   |
| 41.  | 52632 | WASHER, ROLLER HUB RETAINER, 7/8                | 8   |
| 42.  | 94354 | HHCS, 9/16 - 18 X 1-1/8 LUG, PLATED             | 8   |
| 43.  | 52355 | BEARING, OUTER ROLLER CONE                      | 8   |

## KNIGHT TRACKS

(Continued)

| Item | P/N   | Description                             | Qty |
|------|-------|---|-----|
| 44.  | 52354 | BEARING, OUTER ROLLER CUP               | 8   |
| 45.  | 53139 | WHEEL, BOGIE                            | 8   |
| 46.  | 52630 | HUB, ROLLER                             | 8   |
| 47.  | 52352 | BEARING, INNER ROLLER CUP               | 8   |
| 48.  | 52353 | BEARING, INNER ROLLER CONE              | 8   |
| 49.  | 52553 | BEARING, ROLLER SPACER                  | 8   |
| 50.  | 52346 | SEAL, ROLLER                            | 8   |
| 51.  | 51083 | BUSHING, 3-1/2 X 3 X 2 AXLE PIVOT SPLIT | 6   |
| 52.  | 35464 | BOGIE FRAME                             | 2   |
| 53.  | 53090 | PIN, BOGIE MOUNT                        | 2   |
| 54.  | 93115 | HHCS, 5/8 - 11 X 5, GR5, PLATED         | 4   |
| 55.  | 93514 | NUT, 5/8 - 11, TOP LOCK, PLATED         | 4   |
| 56.  | 36495 | RETAINER, TRACK TENSIONER               | 4   |
| 57.  | 93383 | HH, 3/8 - 16 X 16 X 1, WHIZLOC, PLATED  | 16  |

