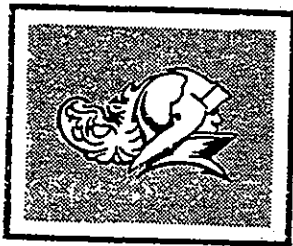


OPERATOR'S MANUAL



KNIGHT

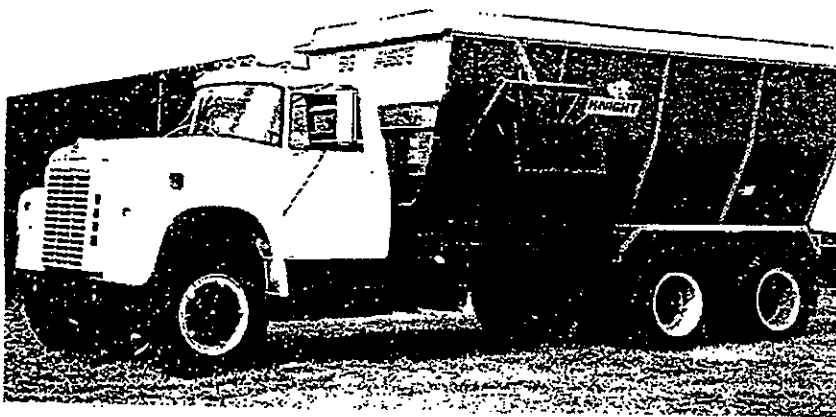
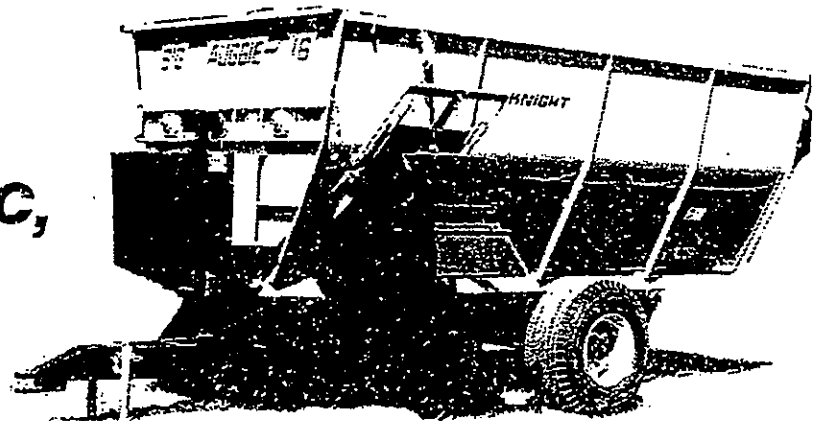
BIG AUGGIE

MODELS

BA-12, BA-12C,

BA-14,

BA-16



MIXER

*

FEEDER

*

BLENDER

PARTS LIST

OPERATION

LUBRICATION

KNIGHT MANUFACTURING CORP.

P.O. BOX 167 1401 WEST 8TH AVE.
BRODHEAD, WISCONSIN 53520
PHONE: (608) 897-2131



Manufacturers of Agricultural Materials Handling Equipment

5004/581

TABLE OF CONTENTS

Assembly Instructions	3	Mechanical Wheel Door Ass'y	14
Augers	6	Operation Instruction	4
Axle Single Undercarriage	22	Paint	7
Axle Oscillating "	24	Rear End Parts	12
Chute Drive Short	16	Reverse Gearcase Parts	20
Chute Drive Long	18	Safety Instructions	2
Decals	6	Scales*	37-43
Front End Parts	9	Self Contained Hydraulics	33-36
Front End Parts Cont.	10	Shields	7
Hydraulic Door Assembly	14	Stationary Mount	31
Lubrication Instruction	4	Truck Mount Parts	27-29

*Refer to scale manual (packed inside indicator unit) for set-up and operation procedure.

ASSEMBLY INSTRUCTIONS

Discharge Chute Assembly

- Slide the chute mount pins back to let the chute fit into position and reinstall the chute pins. Be sure the pins are on the inside of the stop rods, and bend stop rods in.
- Attach the roller drive chain and adjust the chute clutch, roller chain tension and oil the chain and idler sprocket. Grease the bearings and install the shield.
- Mount the tip-off to the chute and secure with the cotter pins. Mount the cable to the tip-off with the 5/16 x 1 OH bolt, lockwasher and nut. Attach the spring to the tip-off control arm. With the Mixer door down, and the tip-off in the up position, thread the cable around the guide and making a loop with the cable clamp, attach it to the spring. Adjust the cable so there is just enough tension to hold the tip-off in the up position.
- Lubricate the chute as per the lubrication instructions and run the chute empty and check all operations.
- The chute adjustment bars can be used in variable positions. It does not require both bars to hold the chute. You should operate your chute in the lowest possible position and still have bunk clearance.

REVISED: ECN 920 2-84

BA-12 SN-4452
BA-14 SN-4426
BA-16 SN-4352

**ALWAYS GIVE SERIAL NUMBER OF MACHINE AND MODEL
ORDER BY PART NUMBER, NOT FIGURE REFERENCE NUMBER**

Operating Instructions:

- Check to see that no obstructions are in the mixer or chute. In winter, be sure that the augers are not frozen in ice. Remove the drain plug at the rear if unit sets outside during storms so the water drains out.
- Be sure that the chute apron is free and not frozen in the lower end of the chute during winter operation.
Before loading, run the unit empty and check all operations.
- Caution should be used in handling haylage. Fine cut should be the rule. Stems running over three inches can cause binding. Other feeds should be put in before haylage.
- Do not overload the machine.
- Be sure all shields and guards are in place before operating this machine.
- All the "Big Auggie" units have a shear bolt safety sprocket on the front of the secondary drive shaft. To replace the shear bolts, remove the front shield and align the $\frac{1}{2}$ " holes in the shear plate and holes in the sprocket. Replace with $\frac{1}{2}$ x $1\frac{1}{2}$ grade 5 bolts.
- When welding on your unit, do not allow the current to flow thru the ball bearings or the roller chains. Ground directly to the item being welded.
- Always disconnect the scale instrumentation from the weigh bars and the power source. Be sure the current does not pass thru the weigh bars or indicator. The alternator should be disconnected if the unit is not disconnected from the power source.
- It is the responsibility of the people mounting the mixer on a truck or in a stationary position to fabricate and install shields if the drive train of drive chains are exposed to accidental body or clothing contact.



Adjustment Precautions

- Keep good tension on all roller chains, but do not over tighten.
- Adjust the chute clutch periodically. Be sure it fully engages and disengages. Failure to do so may cause the clutch parts to malfunction.
- Adjust the slip clutch to pull a normal working load. Be sure to loosen the set screw on the nut before adjusting. Retighten after the proper adjustment has been made.
- Keep the chute apron tight. Proper adjustment is determined if you can pull up the center slat $2\frac{1}{2}$ " from the floor. Be careful not to over tighten.
- Periodically check the belts on the stationary units. ($\frac{1}{2}$ " bolts on the bearings & motor)
- Periodically check the set screws and bolts -- tighten when loose.
- The chute adjustment bars can be used in variable positions. It does not require both bars to hold the chute. You should operate your chute in the lowest possible position and still have bunk clearance.



Lubrication Instructions

- Disconnect the PTO before lubricating this machine.
- Oil the six roller chains before each operating session.
- Oil the six idler sprockets daily.
- Grease the chute clutch jaw and the four chute bearings daily.
- Grease the eleven sealed bearings after each 25 hours of use. Pump grease until a slight bead forms around the seal.
- Keep the Reverse Gearcase filled to plug level with a Multi-viscosity 85W-140 gear lubricant.



KNIGHT MANUFACTURING CORP.
BRODHEAD, WISCONSIN

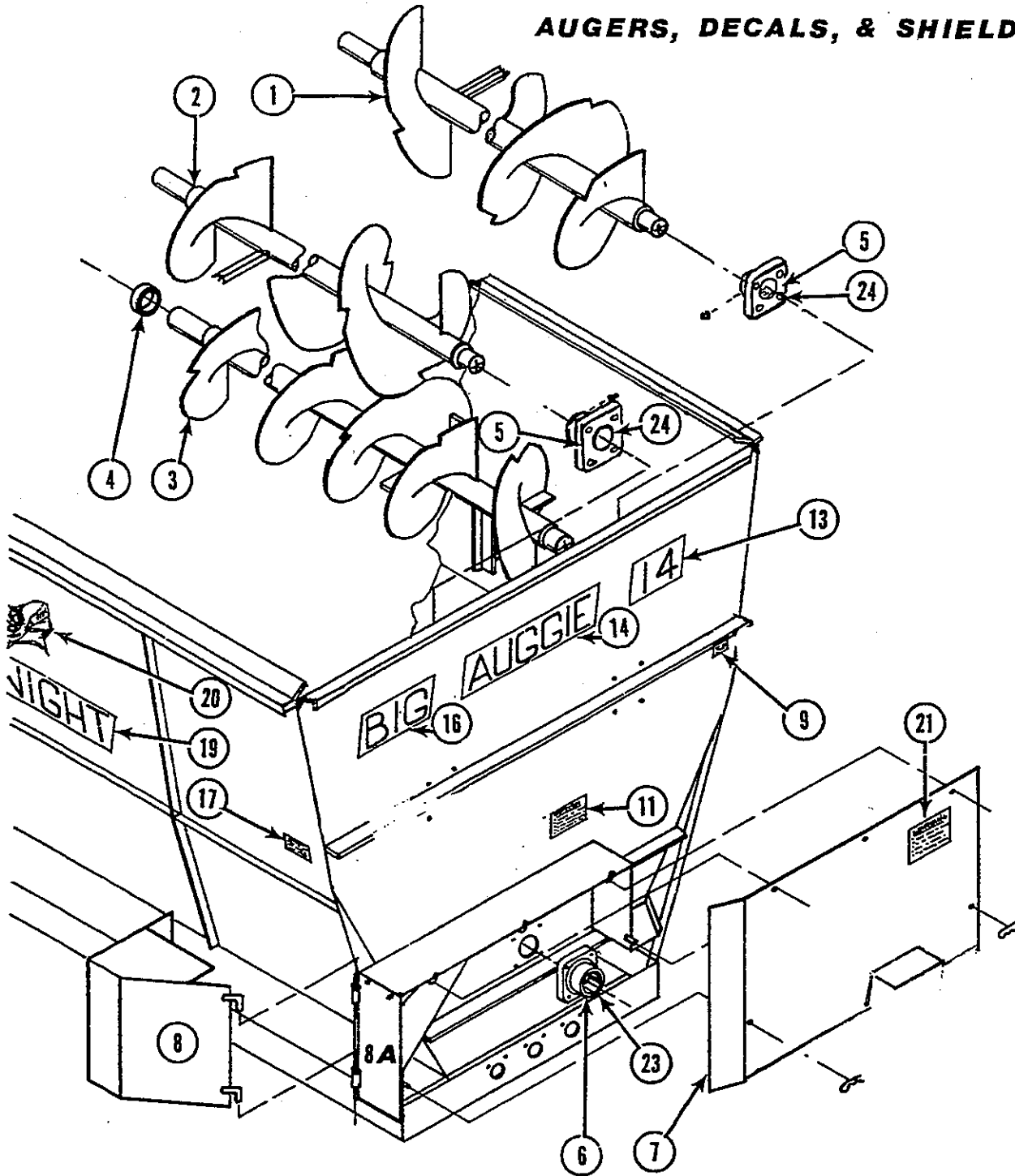
Printed in U.S.A.

3-80

BA-4

ALWAYS GIVE SERIAL NUMBER OF MACHINE AND MODEL
ORDER BY PART NUMBER, NOT FIGURE REFERENCE NUMBER

AUGERS, DECALS, & SHIELDS



KNIGHT MANUFACTURING CORP.
BRODHEAD, WISCONSIN

**ALWAYS GIVE SERIAL NUMBER OF MACHINE AND MODEL
ORDER BY PART NUMBER, NOT FIGURE REFERENCE NUMBER**

<u>Ref.</u>	<u>Part No.</u>	<u>Description</u>	<u>Augers, Decals, & Shields</u>	<u>Q.</u>
1	100-038	BA-12 Upper LH Auger	Standard	1
	100-039	BA-12 Upper LH Auger	Optional	1
	100-665	BA-12C Upper LH Auger	Standard	1
	100-666	BA-12C Upper LH Auger	Optional	1
	100-747	BA-14 Upper LH Auger	Standard	1
	100-746	BA-14 Upper LH Auger	Optional	1
	100-849	BA-16 Upper LH Auger	Standard	1
	100-848	BA-16 Upper LH Auger	Optional	1
2	100-039	BA-12 Upper RH Auger		1
	100-666	BA-12C Upper RH Auger		1
	100-746	BA-14 Upper RH Auger		1
	100-848	BA-16 Upper RH Auger		1
3	100-030	BA-12 Lower Auger		1
	100-664	BA-12C Lower Auger		1
	100-516	BA-14 Lower Auger		1
	100-846	BA-16 Lower Auger		1
4	132-076	Spacer Washer; auger shaft shield 2½"		1
5	170-008	BA-12,12C,14 Bearing; Front upper 2"	(see Item 24)	2
6	170-029	BA-12 Bearing; Front lower 2 15/16"	(see Item 23)	1
7		Front shield		1
8	100-976	Counter shield		1
8A	100-975	Front shield mount		1
9		Notice: Retighten all set screws	Frnt. LH corner	1
10		Oil notice	Frnt. LH corner	1
11	170-850	Caution:	Front	1
13	170-353	"12"	Front & Rear	2
	170-346	"14"	Front & Rear	2
	170-890	"16"	Front & Rear	2
14	170-158	"Auggie"	Front & Rear	2
16	170-156	"Big"	Front & Rear	2
17	170-849	Warning:Beware of power driven	RH & LH Sides	2
19	170-154	"Knight"	Rear & RH & LH	3
20	170-155	"Knight Illustration"	Rear & RH & LH	3
21	170-490	Warning: Engage PTO Slowly	Front LH corner	1
	170-084	"FEMA"	LH side front	1
	171-304	Door Gauge	Door lift bridge	1
23	170-445	BA-12C,14,16 Bearing; Front lower		1
24	170-053	BA-16 Bearing; Front upper		2

NOTE: position zerks to the right or left of the bearings on the inside.



KNIGHT MANUFACTURING CORP.

BRODHEAD, WISCONSIN

3-80

Printed in U.S.A.

BA-6

**ALWAYS GIVE SERIAL NUMBER OF MACHINE AND MODEL
ORDER BY PART NUMBER, NOT FIGURE REFERENCE NUMBER.**

<u>Part No.</u>	<u>Description</u>	<u>Shields</u>	<u>Q.</u>
100-980	Front Shield; Mounts with 170-074 hairpin clip		1
100-976	Counter Shield; Mounts with 170-074 hairpin clip		1
100-975	Front side shield mount; Mounts with 170-062 (7/16 n) (2) 170-061 (7/16 lw) (2)		1
100-979	Rear Shield; Mounts with 170-054 (3/8 x 1 cs)(2) 170-047 (3/8 ln) (2)		1

<u>Part No.</u>	<u>Description</u>	<u>Decals</u>	<u>Q.</u>
170-483	Complete set Big Auggie 12.		1
170-484	Complete set Big Auggie 12C.		1
170-485	Complete set Big Auggie 14.		1
170-889	Complete set Big Auggie 16.		1

<u>Part No.</u>	<u>Description</u>	<u>Paint</u>	<u>Q.</u>
170-812	Yellow quart		as req.
170-813	Yellow gallon		as req.
170-814	Red quart		as req.
170-815	Red gallon		as req.

DISCONTINUED PARTS AND MODEL CHANGES OF PREVIOUS BA UNITS.

<u>No.</u>	<u>Model</u>	<u>Part Description</u>	<u>Serial No.</u>	<u>Date</u>
170-053	BA-14	Upper auger bearing (2)	Before 1703	10-2-73
170-008	BA-14	Upper auger bearing (2)	After 1703	10-2-73
130-128	BA-12C, 14	Sprocket; 60-B-18 T.	Before 2136	12-4-74
131-895	BA-12C, 14	Sprocket; 80-B-15 T. 54ORPM	After 2136	12-4-74
131-894	BA-12C, 14	Sprocket; 80-B-12 T. 100ORPM	After 2136	12-4-74
170-105	BA-12C, 14	#60 Roller chain; 69 P.	Before 2136	12-4-74
170-436	BA-12C, 14	#60 Roller chain; 72 P. 100ORPM	Before 2136	12-4-74
170-843	BA-12C, 14	#80 Roller chain; 54 P.	After 2136	12-4-74
170-851	BA-12C, 14	#80 Roller chain; 52 P. 100ORPM	After 2136	12-4-74
100-101	BA-12C, 14	Shear sprocket assembly	Before 2136	12-4-74
100-724	BA-12C, 14	Shear sprocket assembly	After 2136	12-4-74
130-172	BA-12C, 14	Sprocket; 60-A-36 T. 54ORPM	Before 2136	12-4-74
131-821	BA-12C, 14	Sprocket; 60-A-42 T. 100ORPM	Before 2136	12-4-74
131-889	BA-12C, 14	Sprocket; 80-A-30 T. 100ORPM	After 2136	12-4-74



KNIGHT MANUFACTURING CORP.
BRODHEAD, WISCONSIN

**ALWAYS GIVE SERIAL NUMBER OF MACHINE AND MODEL
ORDER BY PART NUMBER, NOT FIGURE REFERENCE NUMBER**

DISCONTINUED PARTS AND MODEL CHANGES OF PREVIOUS BA UNITS, CON'T.

100-723	BA-12C,14	#80 Chain tightener assembly Frt.	After 2136	12-4-74
100-600	BA-12	#80 Chain tightener ass'y Counter shaft part	After 1898	4-10-74
100-752	BA-12	#60 Chain tightener ass'y	After 2232	7-15-75
100-538	BA-12	#60 Chain tightener ass'y From #1786 to 2232		
100-020	BA-12,12C,14	#60 Chain tightener ass'y	Before 1786	1- 1-74
100-530	BA-12,12C,14	#50 Chain tightener ass'y	After 1986	7-15-74
100-021	BA-12,12C,14	#50 Chain tightener ass'y	Before 1986	7-15-74
100-745	BA-12	#120 Chain tightener ass'y	After 2232	7-15-75
100-710	BA-12C,14	#140 Chain tightener ass'y	After 2136	12-4-74
170-085	BA-12C,14 BA-12	Wood block tightener; 2 3/4 x 3 1/2	Before 2136 Before 2232	12-4-74 7-15-75
100-699	BA-12C,14	#100 Chain tightener ass'y Counter shaft part	After 1898	4-10-74
170-086	BA-12,12C,14	Wood block tightener; 2 /34 x 3 Counter shaft part	Before 1898	4-10-74
100-747	BA-14	LH upper auger ass'y	After 1703	10-2-73
100-517	BA-14	LH upper auger ass'y	Before 1703	10-2-73
100-515	BA-14	Front shaft ass'y	After 1703	10-2-73
100-512	BA-14	Front shaft ass'y	Before 1703	10-2-73
100-746	BA-14	RH upper auger ass'y	After 1703	10-2-73
100-518	BA-14	RH upper auger ass'y	Before 1703	10-2-73
100-515	BA-14	Front shaft ass'y	After 1703	10-2-73
100-512	BA-14	Front shaft ass'y	Before 1703	10-2-73
130-200	BA-12,12C,14	Reverse Gear Box Input shaft gear; 22T.	After 989	9-27-71
2330	BA-12,12C,14	Input shaft gear; 22T.	Before 989	9-27-71
130-050	BA-12,12C,14	Output shaft gear; 32T.	After 989	9-27-71
2331	BA-12,12C,14	Output shaft gear; 32T.	Before 989	9-27-71
130-177	BA-12,12C,14	Rear Shield	Before 2656	12-13-76
100-979	BA-12,12C,14	Rear Shield	After 2656	12-13-76
100-046	BA-12	Front side shield	Before 2656	12-13-76
100-697	BA-12C,14	Front side shield	Before 2656	12-13-76
100-975	BA-12,12C,14	Front side shield	After 2656	12-13-76
100-047	BA-12	Front shield	Before 2656	12-13-76
100-698	BA-12C,14	Front shield	Before 2656	12-13-76
100-980	BA-12,12C,14	Front shield	After 2656	12-13-76



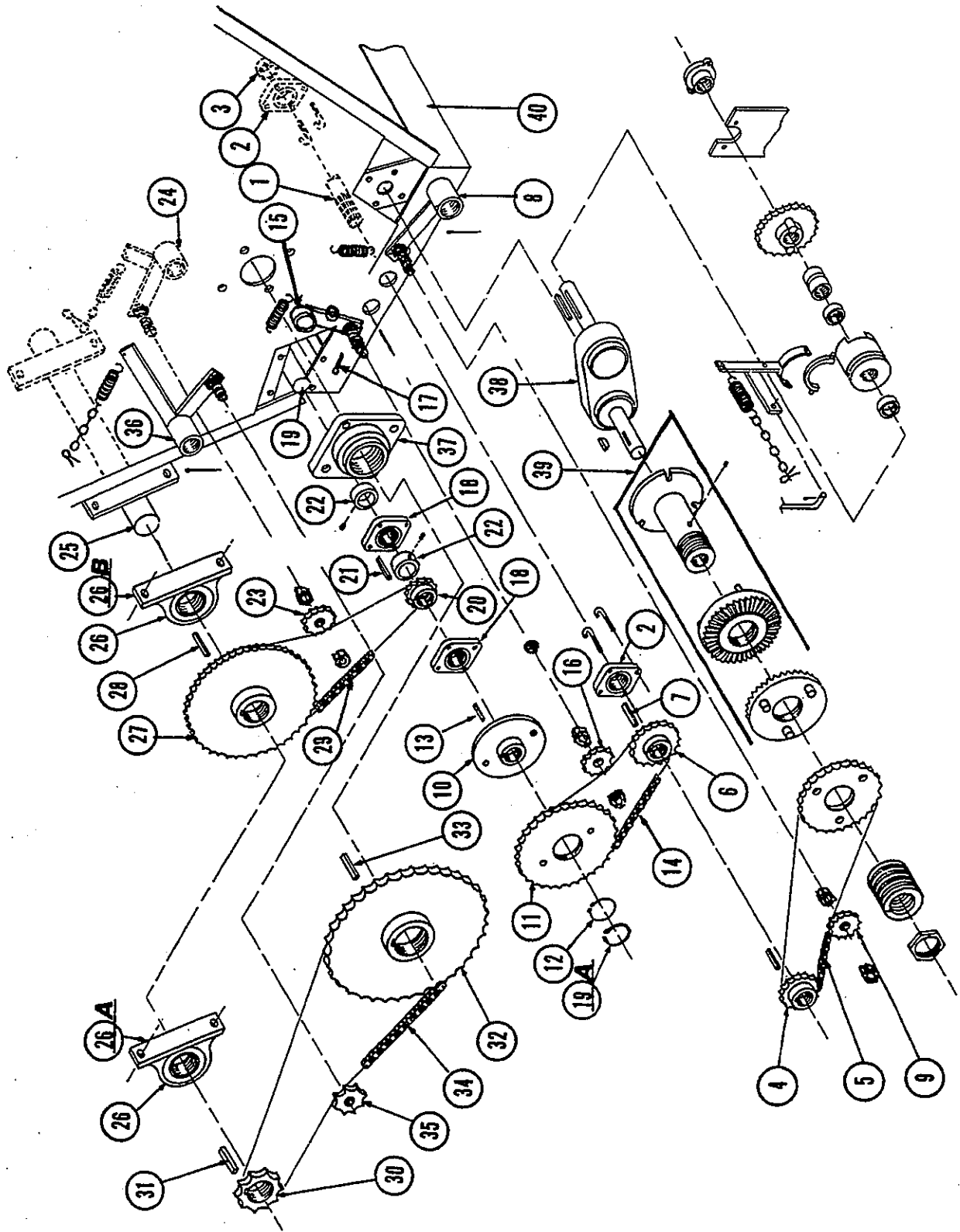
KNIGHT MANUFACTURING CORP.
BRODHEAD, WISCONSIN

3-80

Printed in U.S.A.

BA-8

FRONT END PARTS



KNIGHT MANUFACTURING CORP.
BRODHEAD, WISCONSIN

Ref.	Part No.	Description	Front End Parts	Q.
1	130-126	Shaft; 1 3/8 x 24" Lg.	Tow Type Only	1
1	132-598	Shaft; 1 3/8 x 21 1/2" Lg.	Stationary Units & Truck Mounted Units Only	1
	170-051	Snap Ring; 1 3/8" External	(Not Used with 132-598 Shaft)	1
2	170-000	Bearing; 1 3/8" Flange Ball Type (SF-22)	Lower Mount Bolts: 170-001 (1/2" J-Bolt); Upper Bolts: 170-002 (1/2 x 1 1/2 cs) 2 ea. bearing	2
			Also Use 170-003 (1/2" lw); 170-004 (1/2" n) 4 ea. bearing	
3	130-129	Collar; 1 3/8 ID x 2" OD x 3/4" Lg	Includes 170-151 (3/8 ss)	1
4	131-346	Sprocket; 50-B-15	1 3/8" b. 3/8" kw Reverse Gearcase Drive	1
5	170-104	Roller Chain; #50-1-70 p.	includes 170-088 (#50 conn. link)	1
6 BA-12	130-128	Sprocket; 60-B-18	1 3/8" b. 3/8" kw	1
6 12C-14 -16	131-895	Sprocket; 80-B-15	1 3/8" b. 3/8" kw -540 RPM-	1
6	131-894	Sprocket; 80-B-12	1 3/8" b. 3/8" kw -1000 RPM-	1
7	170-052	Key; 3/8 x 3/8 x 2 1/8" square	(All Front Counter Sprockets)	1
	101-344	#50 Chain Tightener Assembly	(Reverse Case Tightener)	1
8	101-343	Chain Tightener Arm		1
	170-135	Cotter Pin; 3/16 x 3	(Tightener Arm Mount)	1
9	171-272	Sprocket; 50--15	Idler	1
	170-037	Nut; 5/8 Hex Jam		2
	170-110	Spring; 3 15/16" Lg.	Expansion	1
BA-12	100-101	Shear Sprocket Assembly; #60-36 t.	-540 RPM-	1
10	100-045	Hub; Shear Sprocket--Includes 170-151	(3/8NC x 3/8 set screws)	1
11	130-172	Sprocket; 60-A-36 t.	-540 RPM- Shear Bolts: 170-068 (1/2 x 1 1/2 cs); 170-069 (1/2" locknut)	2 ea.
BA-12	100-778	Shear Sprocket Assembly; #60-42 t.	-1000 RPM-	1
11 BA-12	131-821	Sprocket; 60-A-42 t.		1
12C-14	100-724	Shear Sprocket Assembly; #80-30 t.	540 & 1000 RPM Uses 170-068 (1/2 x 1 1/2 cs); 170-069 (1/2" locknut)	2 ea.
11 12C-14	131-889	Sprocket; 80-A-30 t.		1
10 BA-16	101-342	Shear Sprocket Assembly; #80-30 t.	-540 & 1000 RPM-	1
11	101-341	Hub; Shear Sprocket--Includes 170-151	(3/8NC x 3/8 set screws)	1
	132-858	Sprocket; 80-A-30 t.	540 & 1000 Shear Bolts: 170-372 (5/16 x 1 1/2 cs) 170-028 (5/16 fln) 170-0'68 (1/2 x 1 1/2 cs) 170-069 (1/2 ln).	1 ea.
12	170-087	Snap Ring for Shear Sprocket Assembly	All.	1
13	170-019	Key; 1/2 x 1/2 x 2"	(Used with all Shear Sprocket Assem.)	1
14 BA-12	170-105	Roller Chain; #60-1-69 p.	-540 RPM- Includes 170-089 (#60 conn. link); 170-097 (#60 offset link)	1 ea.
14 BA-12	170-436	Roller Chain; #60-1-72 p.	-1000 RPM- Includes 170-089 conn.	1
14 12C-14-16	170-843	Roller Chain; #80-1-54 p.	-540 RPM- Includes 170-090 (#80 conn.)	1
14 12C-14-16	170-851	Roller Chain; #80-1-52 p.	-1000 RPM- Includes 170-090 (#80 conn.)	1
BA-12	101-335	#60 Chain Tightener Assembly	-540 & 1000 RPM-	1
15	101-334	Chain Tightener Arm		1
16	171-264	Sprocket; 60-15		1
	170-037	Nut; 5/8 Hex Jam		2
17	170-135	Pin; cotter 3/16 x 3 Lg.		1
	170-11	Spring; " Lg.	expansion	1
12C-14-16	101-336	#80 Chain Tightener Assembly	-540 & 1000 RPM-	1
15	101-334	Chain Tightener Arm		1
16	171-273	Sprocket; 80-11		1
17	170-037	Nut; 5/8 Hex Jam		2
	170-135	Pin; cotter 3/16 x 3 Lg.		1
	170-11	Spring; " Lg.	Light Expansion	1
	171-331	Spacer; 3/4 o.d., 5/8 i.d., .626 Lg.		1
18	170-008	Bearing; 2" Flange Ball Type MSF-32	Mount Bolts: 170-009 (5/8 x 2 cs); 170-010 (5/8 lw); 170-011 (5/8 n) 4 ea. bearing	2
19	130-035	Shaft; 2 x 20" Lg.	Lower Counter	1
19A	170-361	Snap ring for Lower Counter Shaft	2"	2
20 BA-12	130-391	Sprocket; 80-B-13	2" b. includes 170-151 (3/8NC x 3/8 ss)	1
20 12C-14-16	131-352	Sprocket; 100-B-12	2" b. includes 170-151 (3/8NC x 3/8 ss)	1
21	170-898	Key; 1/2 x 1/2 x 2 1/2" Straight Square		1



KNIGHT MANUFACTURING CORP.

BRODHEAD, WISCONSIN

3-80

Printed in U.S.A.

BA-10

<u>Ref.</u>	<u>Part No.</u>	<u>Description</u>	<u>Front End Parts - Cont.</u>	<u>Q</u>
BA-12	101-346	#80 Chain Tightener Assembly		1
23	171-273	Sprocket; 80-11		1
120-14-16	101-347	#100 Chain Tightener Assembly		1
23	171-316	Sprocket; 100-10		1
(The following 7 parts are common to both #80 and #100 tighteners)				
24	101-345	Chain Tightener Arm		1
	170-111	Spring; Heavy Expansion Type		1
	170-478	#4 Machine Chain x 12 links long		1
	170-035	Nut; 3/4 Hex Jam		2
	170-800	Linch Pin		1
	170-135	Cotter Pin; 3/16 x 3 Tightener Arm Mount		1
25	130-036	Shaft; 2 1/2 x 20" Secondary Counter		1
26 BA-12	170-013	Bearing; 2 1/2" Pillow Block Type (SPD-40) Mount Bolts: 170-014 (3/4 x 3 cs); 170-015 (3/4 fw); 170-016 (3/4 lw); 170-017 (3/4 hex nut)	2 ea. bearing	1
26 BA-12	170-013	Bearing; 2 1/2" Pillow Block Type (SPD-40)		1
26A 120-14-16	170-882	Bearing; 2 1/2" Pillow Block Type (P2208) Mounts with 170-371 (5/8 x 4cs) 170-066 (5/8fw); 170-010 (5/8lw); 170-011 (5/8n).	2 ea.	1
26B BA-16	170-882	Bearing; 2 1/2" Pillow Block Type (P-2208)		1
27 BA-12	130-390	Sprocket; 80-B-48 2 1/2" b. Includes 170-249 (1/2 x 1/2 set screws)		1
27 120-14-16	131-351	Sprocket; 100-B-45 2 1/2" b. Includes 170-249 (1/2 x 1/2 set screws)		1
28	170-018	Key; 5/8 x 5/8 x 3 straight - For 130-390 or 131-351		1
29 BA-12	170-108	Roller Chain; #80-1-70 p. Includes 170-090 (#80 conn. link)		1
29 120-14-16	170-447	Roller Chain; #100-1-61 p. Includes 170-091 (#100 conn. link)		1
30 BA-12	130-175	Sprocket; 120-B-12 2 1/2" b. Includes 170-249 (1/2 x 1/2 set screws)		1
30 120-14	131-349	Sprocket; 140-B-11 2 1/2" b. Includes 170-249 (1/2 x 1/2 set screws)		1
30 BA-16	132-111	Sprocket; 160-B-10 2 1/2" b. Includes 170-249 (1/2 x 1/2 set screws)		1
31	170-018	Key; 5/8 x 5/8 x 3 straight		1
32 BA-12	130-176	Sprocket; 120-B-48 2 15/16 b. Includes 170-251 (3/4 x 3/4 ss)		1
32 120-14	131-574	Sprocket; 140-B-45 3 1/2" b. Includes 170-251 (3/4 x 3/4 set screws)		1
32 BA-16	132-112	Sprocket; 160-B-42 3 1/2" b. Includes 170-251 (3/4 x 3/4 set screws)		1
33		Key; 3/4 x 3/4 x 3 straight		1
34 BA-12	170-109	Roller Chain; #120-1-74 p. Includes 170-092 (#120 conn. link)		1
34 120-14	170-446	Roller Chain; #140-1-67 p. Includes 170-093 (#140 conn. link)		1
34 BA-16	170-886	Roller Chain; #160-1-60 p. Includes 170-888 (#160 conn. link)		1
BA-12	100-745	#120 Chain Tightener Assembly		1
35	100-748	Sprocket; #120-A-6 Idler - Includes 170-024 (1 x 1 1/2 x 1 bushing)		1
120-14	100-710	#140 Chain Tightener Assembly		1
35	100-706	Sprocket; #140-B-6 Idler - Includes 170-164 (1 x 1 1/2 x 1 1/2 bushing)		1
BA-16	101-062	#160 Chain Tightener Assembly		1
35	101-061	Sprocket; #160-A-9 Idler - Includes 170-241 (1 x 1 1/2 x 1 1/8 bushing)		1
(Following 6 Parts are common to all three Tighteners)				
36	100-705	Chain Tightener Arm		1
	170-454	Roll Pin; 3/16 x 1 1/2" Sprocket Mounting		1
	170-136	Spring; Expansion Type 9 1/2" Lg.		1
	170-845	#4 Machine Chain x 17 links		1
	170-800	Linch Pin		1
	170-135	Cotter Pin; 3/16 x 3" Tightener Arm Mounting		1
37 BA-12	170-029	Bearing; 2 15/16" Flange Type (FB22447H) Mount Bolts: 170-058 (3/4 x 2 cs); 170-016 (3/4 lw); 170-017 (3/4 n)	4 ea. bearing	1
37 120-14-16	170-445	Bearing; 3 1/2" Flange Type (FB22456E)		1
38	170-697	Reverse Gearcase (For Disassembly & Parts See Rev. Gearcase)		1
39	170-730	Slip Clutch Assembly; 27 t. (See Slip Clutch Ass'y)		1
40	-----	<u>SERIAL NUMBER LOCATION:</u> Serial Number is stamped on the frame. If the serial number is not found on the left front corner of the frame it will be on a plate in the upper left corner of the front panel.		



KNIGHT MANUFACTURING CORP.

BRODHEAD, WISCONSIN

3-80

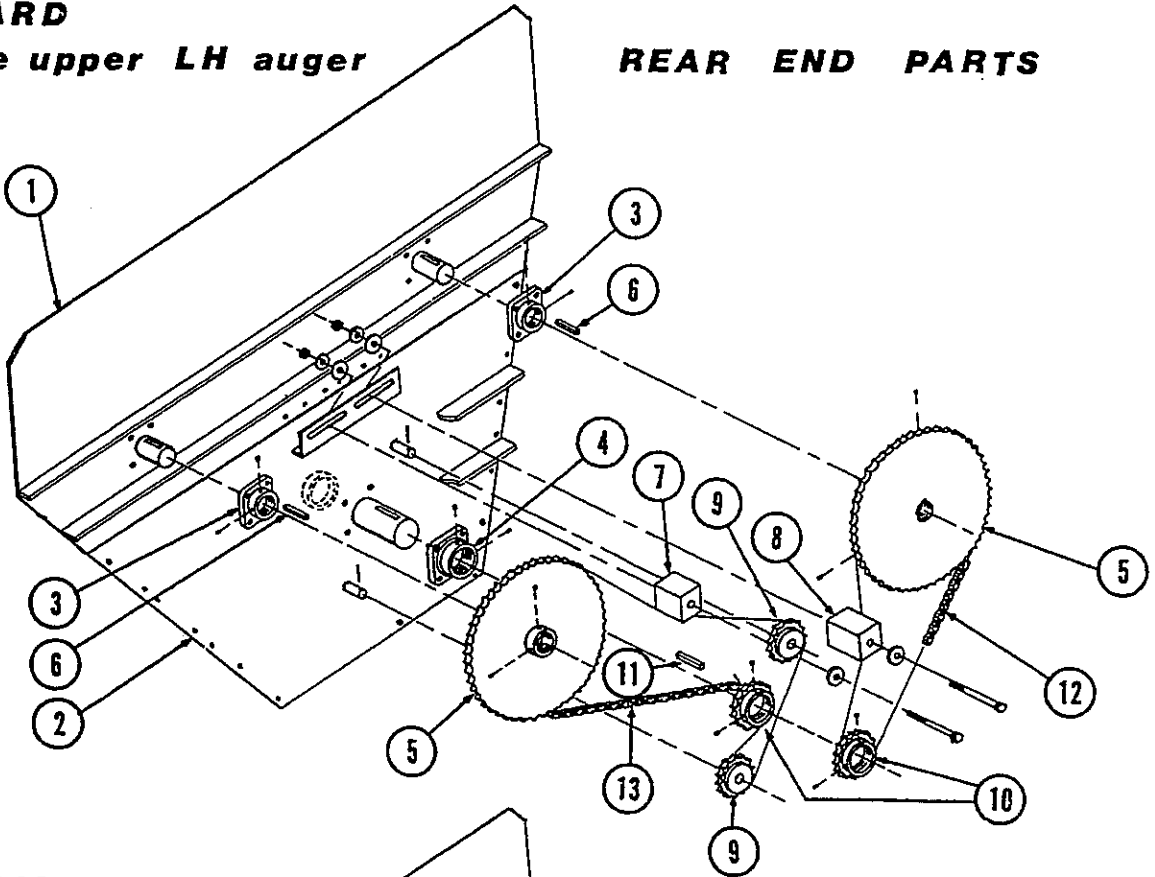
Printed in U.S.A.

BA-11

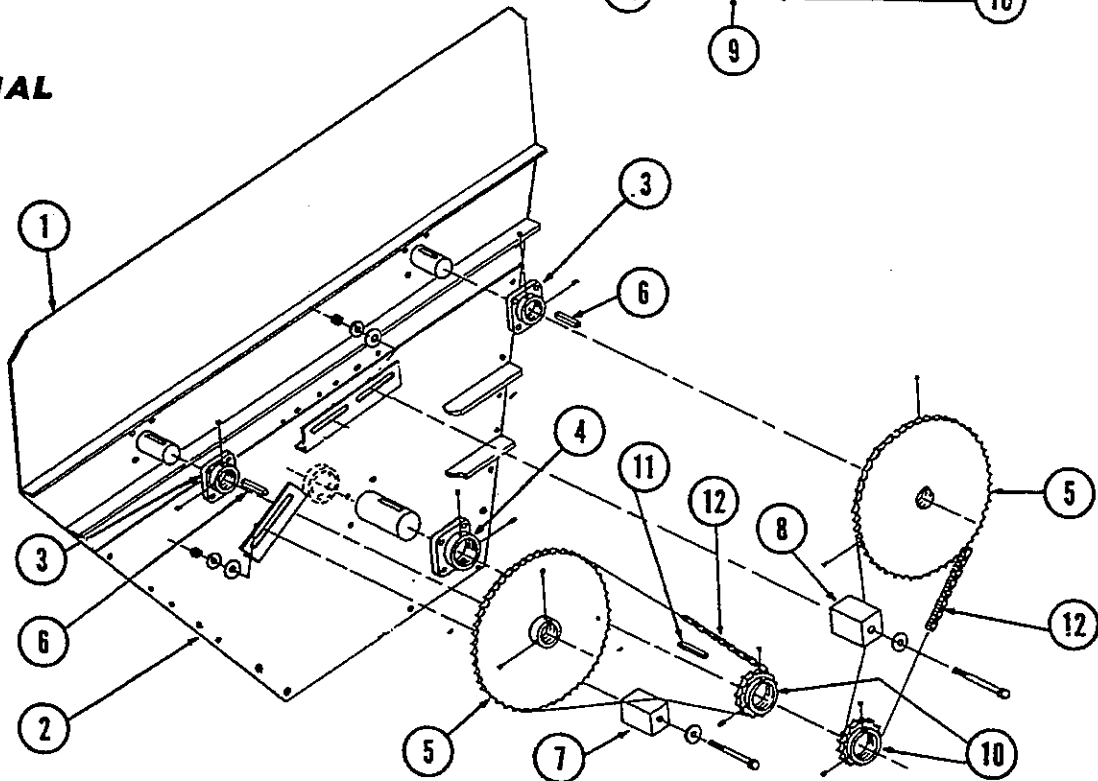
ALWAYS GIVE SERIAL NUMBER OF MACHINE AND MODEL
ORDER BY PART NUMBER, NOT FIGURE REFERENCE NUMBER

STANDARD
Reverse upper LH auger

REAR END PARTS



OPTIONAL



KNIGHT MANUFACTURING CORP.
BRODHEAD, WISCONSIN

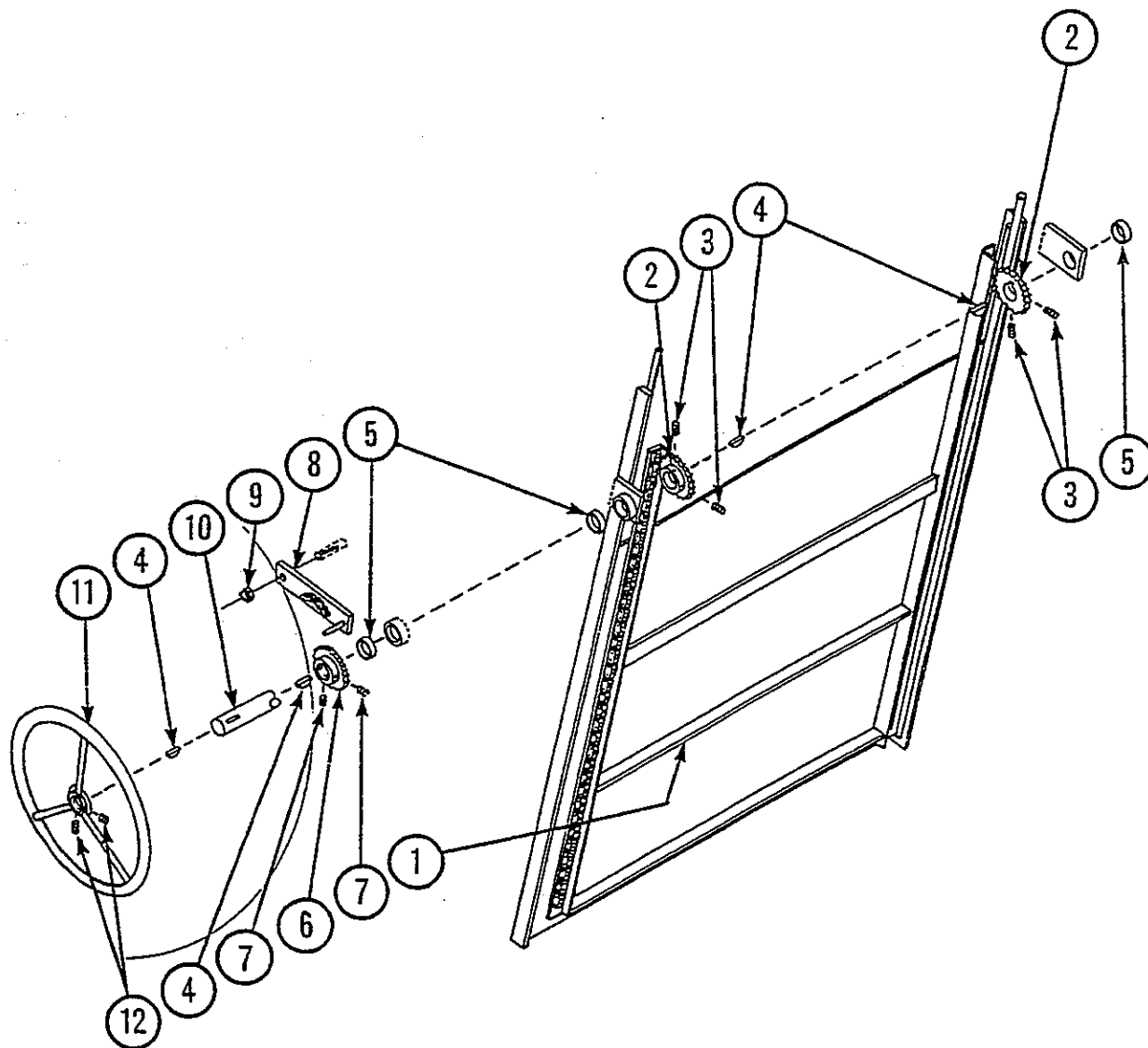
**ALWAYS GIVE SERIAL NUMBER OF MACHINE AND MODEL
ORDER BY PART NUMBER, NOT FIGURE REFERENCE NUMBER**

<u>Ref.</u>	<u>Model</u>	<u>Part No.</u>	<u>Description</u>	<u>Rear End Parts</u>	<u>Q.</u>
1	12,12C	100-676	Upper Rear Panel;		
1	14	100-678	Upper Rear Panel;		
1	16	100-851	Upper Rear Panel;		
2	12,12C,		Lower Rear Panel; mount } w/170-027(5/16x1cs),170-028(5/16fln) (21)		1
2	14				
3	12,12C	170-008	Bearing; Upper Auger - 4-Bolt Flange MSF-32 2" b. 170-030 (5/8 x 1 3/4 cs); 170-031 (5/8 locknut)	Mount bolts; 2 4 ea. bearing	2
3	14,16	170-053	Bearing; Upper Auger - 4-Bolt Flange MSF-40 2 1/2" b. (Uses same mounting bolts as 170-008)	4 ea. bearing	2
4	12,12C	170-053	Bearing; Lower Auger - 4-Bolt Flange MSF-40 2 1/2" b. (Uses same mounting bolts as 170-008)	4 ea. bearing	1
4	16	170-365	Bearing; Lower Auger - 4-Bolt Flange FB22440E 2 1/2" b. (Uses same mounting bolts as 170-008 (Item #3))	4 ea. bearing	1
5	12,12C	132-813	Sprocket; Upper Auger 80-B-65 2" b. includes 170-249 (1/2"ss)		2
5	14	132-766	Sprocket; Upper Auger 80-B-65 2 1/2" b. includes 170-249 (1/2"ss)		2
5	16	132-757	Sprocket; Upper Auger 100-B-60 2 1/2" b. includes 170-249 (1/2"ss)		2
6		170-064	Key; 1/2 x 1/2 x 3 beveled end (Use with 130-174 sprocket)		2
6		170-141	Key; 5/8 x 5/8 x 3 beveled end (Use with 131-348 & 132-435)		2
7	12,12C	170-086	Wood Block Tightener; 3" Lg. Mount Bolts: 170-067 (5/8 x 4 1/2 cs); 170-066 2-(5/8 fw); 170-010 (5/8 lw); 170-011 (5/8 n)	1 ea.	1
7	16	170-085	Wood Block Tightener; 3 1/2" Lg. Mount Bolts: 170-065 (5/8 x 5cs) 170-066 2-(5/8 fw); 170-010 (5/8 lw); 170-011 (5/8 n)	1 ea.	1
8	12,12C	170-085	Wood Block Tightener; 3 1/2" lg. Mount Bolts: 170-065 (5/8 x 5 cs) 170-066 2-(5/8 fw); 170-010 (5/8 lw); 170-011 (5/8 n)	1 ea.	1
8	16	171-065	Wood Block Tightener; 4 1/2" Lg. Mount Bolts: 170-381 (5/8 x 6 cs) 170-066 2-(5/8 fw); 170-010 (5/8 lw); 170-011 (5/8 n)	1 ea.	1
9	12,12C	100-037	Sprocket; 80-C-15 idler - includes 170-055 (1 x 1 1/2 x 1 1/2 bushing) Also use 170-056 (1/2 x 2 cotter pin) for mounting	1 ea.	2
9	16	101-058	Sprocket; 100-B-12 idler - includes 170-055 (1 x 1 1/2 x 1 1/2 bushing) Also use 170-056 (1/2 x 2 cotter pin) for mounting	1 ea.	2
10	12,12C,14,130	132-433	Sprocket; 80-B-15 2 1/2" b. Lower Auger-includes 170-249 (1/2" ss)		2
10	16	132-433	Sprocket; 100-B-14 2 1/2" b. Lower Auger-includes 170-249 (1/2" ss)		2
11		170-018	Key; 5/8 x 5/8 x 3 square ends (Use with 130-173 & 132-433)		1
12	12,12C	171-333	Roller Chain; #80-1-110 p. includes 170-090 (#80 conn. link); 170-098 (#80 offset link)	1 ea.	1
12	14	171-184	Roller Chain; #100-1-94 p. includes 170-091 (#100 conn. link); 170-099 (#100 offset link)	1 ea.	1
13	12,12C	171-334	Roller Chain; #80-1-142 p. includes 170-090 (#80 conn. link);k); 170-098 (#80 offset link)	1 ea.	1
13	16	171-183	Roller Chain; #100-1-120 p. includes 170-091 (#100 conn. link); 170-099 (#100 offset link)	1 ea.	1
14			Drain		1



KNIGHT MANUFACTURING CORP.
BRODHEAD, WISCONSIN

MECHANICAL DOOR



REVISED: ECN 951 5-84



ALWAYS GIVE MODEL AND SERIAL NUMBER OF UNIT.
ORDER BY PART NUMBER, NOT FIGURE REFERENCE NUMBER.

MECHANICAL DOOR

REF	PART NO	DESCRIPTION	QTY
1	101-104	Discharge Door	1
2	130-234	Sprocket; 50-B-15T	2
3	170-248	Setscrew; 5/16 - 18 NC x 5/16	2
4	170-120	Key; 1/4 x 7/8 Woodruff Type A	4
5	170-243	Bushing	3
6	130-710	Sprocket; 50-B-21T	1
7	170-248	Setscrew; 5/16 - 18 NC x 5/16	2
8	101-105	Door Lock Assembly	1
9	170-047	Locknut; 3/8 - 16 NC	1
10	131-589	Shaft	1
11	101-084	Wheel Assembly	1
12	170-248	Setscrew; 5/16 - 18 NC x 5/16	2



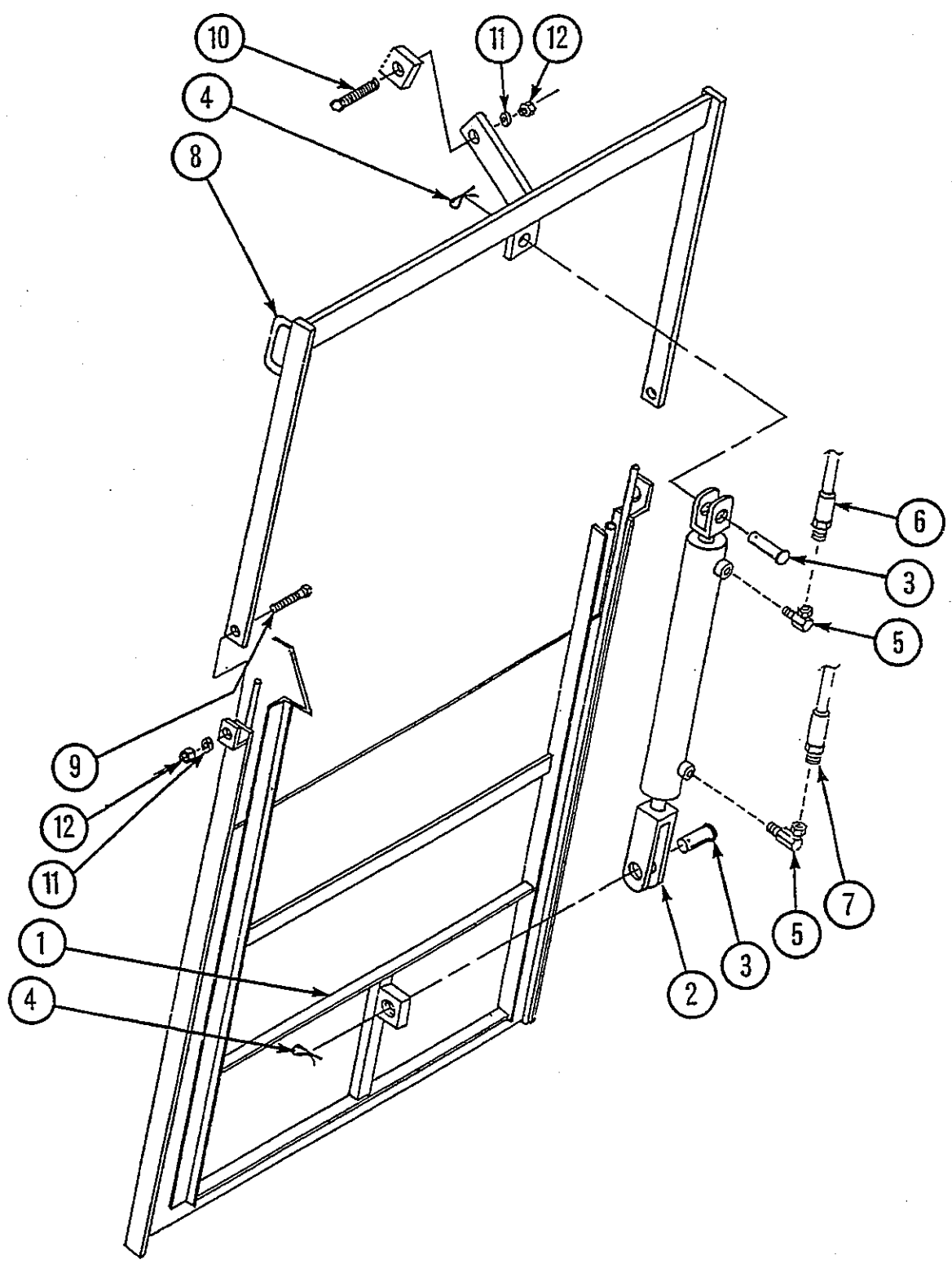
Printed in U.S.A.

KNIGHT MANUFACTURING CORP.
P.O. BOX 167 1501 WEST 7TH AVE.
BRODHEAD, WISCONSIN 53520
PHONE - GENL. OFFICE (608) 897-2131
PHONE - PARTS DEPT. (608) 897-2125
CABLE: KNIGHT

REVISED: ECN 951 5-84

PAGE BA-15A

HYDRAULIC DOOR



REVISED: ECN 951 5-84



ALWAYS GIVE MODEL AND SERIAL NUMBER OF UNIT.
ORDER BY PART NUMBER, NOT FIGURE REFERENCE NUMBER.

HYDRAULIC DOOR

REF	PART NO	DESCRIPTION	QTY
1		Discharge Door	1
2	170-072	Hydraulic Cylinder*; 2 x 22	1
3	170-073	Cylinder Pin	2
4	171-077	Hairpin Clip	2
5	171-030	Elbow; 90° Swivel, 3/8 NPT	2
6	170-471	Hose; Extend, 1/4 x 170 (Tow Type Only)	1
6	171-427	Hose; Extend, 1/4 x 80 (Div. Valve Only)	1
6	171-309	Hose; Extend, 1/4 x 132 (Self Cont. Only)	1
7	171-068	Hose; Retract, 1/4 x 192 (Tow Type Only)	1
7	171-428	Hose; Retract, 1/4 x 102 (Div. Valve Only)	1
7	171-310	Hose; Retract, 1/4 x 152 (Self Cont. Only)	1
8	100-098	Hydraulic Frame Assembly	1
9	170-002	Bolt; 1/2 - 13 NC x 1 1/2	2
10	170-050	Bolt; 1/2 - 13 NC x 2	1
11	170-003	Lockwasher; 1/2	3
12	170-004	Nut; 1/2 - 13 NC	3

*Use seal kit #170-075 for repair.



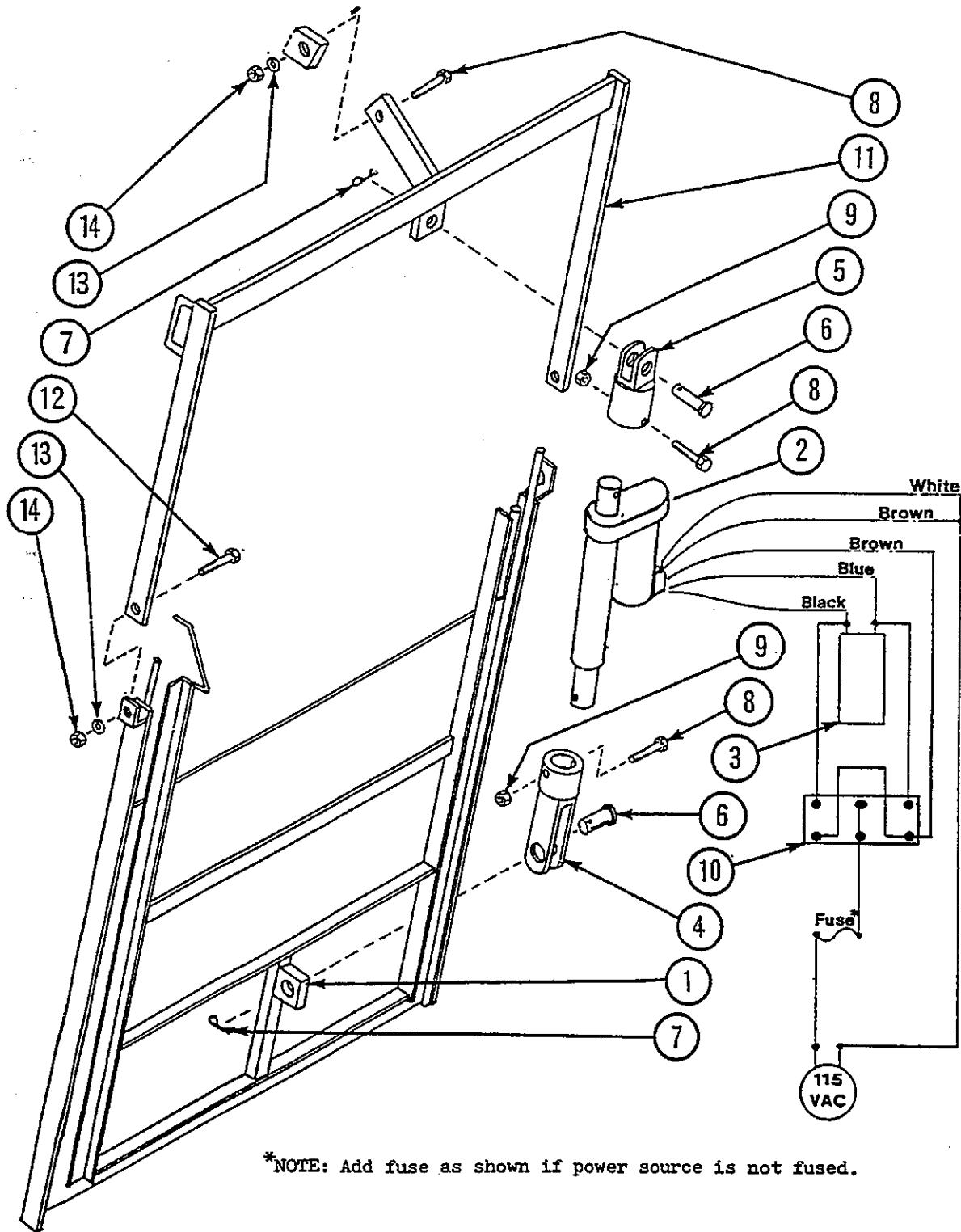
Printed in U.S.A.

KNIGHT MANUFACTURING CORP.
P.O. BOX 167 1501 WEST 7TH AVE.
BRODHEAD, WISCONSIN 53520
PHONE - GENL. OFFICE (608) 897-2131
PHONE - PARTS DEPT. (608) 897-2125
CABLE: KNIGHT

REVISED: ECN 951 5-84

PAGE BA-15C

ELECTRIC DOOR



*NOTE: Add fuse as shown if power source is not fused.

REVISED: ECN 942 5-84



ALWAYS GIVE MODEL AND SERIAL NUMBER OF UNIT.
ORDER BY PART NUMBER, NOT FIGURE REFERENCE NUMBER.

ELECTRIC DOOR

REF	PART NO	DESCRIPTION	QTY
1	100-022	Discharge Door	1
2	171-632	Electric Actuator	1
3	171-201	Capacitor	1
4	101-562	Actuator Extension	1
5	101-562	Actuator Extension	1
6	170-073	Cylinder Pin	2
7	170-074	Hairpin Clip	2
8	170-050	Bolt; 1/2 - 13 NC x 2	3
9	170-042	Nut; 1/2 - 13 NC Lock	2
10	171-199	Toggle Switch	1
11	100-098	Actuator Frame Assembly	1
12	170-002	Bolt; 1/2 - 13 NC x 1 1/2	2
13	170-003	Lockwasher; 1/2	3
14	170-004	Nut; 1/2 - 13 NC	5

NOTE: Add fuse as shown if power source is not fused.



Printed in U.S.A.

KNIGHT MANUFACTURING CORP.
P.O. BOX 167 1501 WEST 7TH AVE.
BRODHEAD, WISCONSIN 53520
PHONE - GENL. OFFICE (608) 897-2131
PHONE - PARTS DEPT. (608) 897-2125
CABLE: KNIGHT

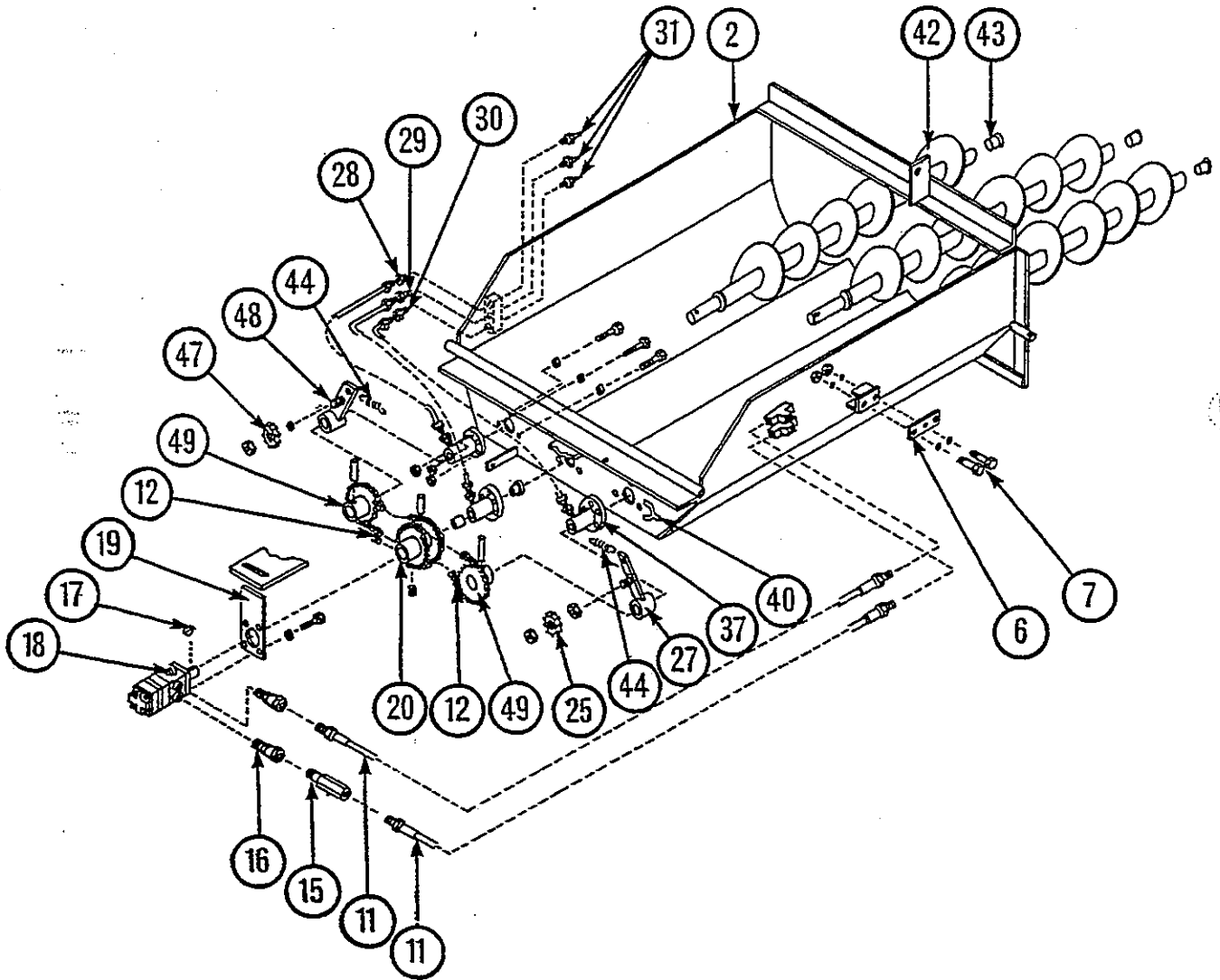
REVISED: ECN 942 5-84

PAGE BA-16



ALWAYS GIVE MODEL AND SERIAL NUMBER OF UNIT.
ORDER BY PART NUMBER, NOT FIGURE REFERENCE NUMBER.

CHUTE AUGERS and DRIVE



Printed in U.S.A.

KNIGHT MANUFACTURING CORP.
P.O. BOX 167 1501 WEST 7TH AVE.
BRODHEAD, WISCONSIN 53520
PHONE - GENL. OFFICE (608) 897-2131
PHONE - PARTS DEPT. (608) 897-2125
CABLE: KNIGHT

REVISED:

PAGE 16A



ALWAYS GIVE MODEL AND SERIAL NUMBER OF UNIT.
ORDER BY PART NUMBER, NOT FIGURE REFERENCE NUMBER.

TIPOFF PARTS 3-AUGER CHUTE

REF	PART NO	DESCRIPTION	QTY
1	170-235	Reducer Bushing; 1/2 - 3/8 NPT	2
2	170-233	Swivel Connector; 3/8 NPT	2
3	171-192	Hydraulic Hose; 1/4 x 21 1/2	1
4	171-202	Hydraulic Hose; 1/4 x 31 1/2	1
5	170-941	Hydraulic Cylinder*; 2 x 8	1
6	170-073	Cylinder Pin	2
7	170-074	Hairpin Clip	2
8	132-974	Cylinder Mounting Bar	1
9	170-002	Bolt; 1/2 - 13 NC x 1 1/2	14
10	170-040	Flatwasher; 1/2	2
11	170-003	Lockwasher; 1/2	6
12	170-004	Nut; 1/2 - 13 NC	6
13	101-412	Tip-off	1
14	170-115	Cotter Pin; 3/16 x 2	2
15	171-258	Magnet	1
15	132-834	Magnet Blank (Not shown)	AR
16	170-117	Bolt; 5/16 - 18 NC x 1 OH	7
17	170-118	Lockwasher; 5/16	7
18	170-119	Nut; 5/16 - 18 NC	7
19	132-981	Tip-off Mounting Bar	1
20	170-054	Bolt; 3/8 - 16 NC x 1	2
21	170-047	Nut; 3/8 - 16 NC Lock	2
22	131-417	Height Adjustment Bar	2
23	170-050	Bolt; 1/2 - 13 NC x 2	2
24	101-411	Chute Shell	1
25	131-583	Hinge Pin	2
26	171-335	Hydraulic Hose; 1/2 x 132	2

*Use seal kit #170-075 for repair.



Printed in U.S.A.

KNIGHT MANUFACTURING CORP.

P.O. BOX 167 1401 WEST 8TH AVE.
BRODHEAD, WISCONSIN 53520
PHONE: (608) 897-2131 CABLE: KNIGHT

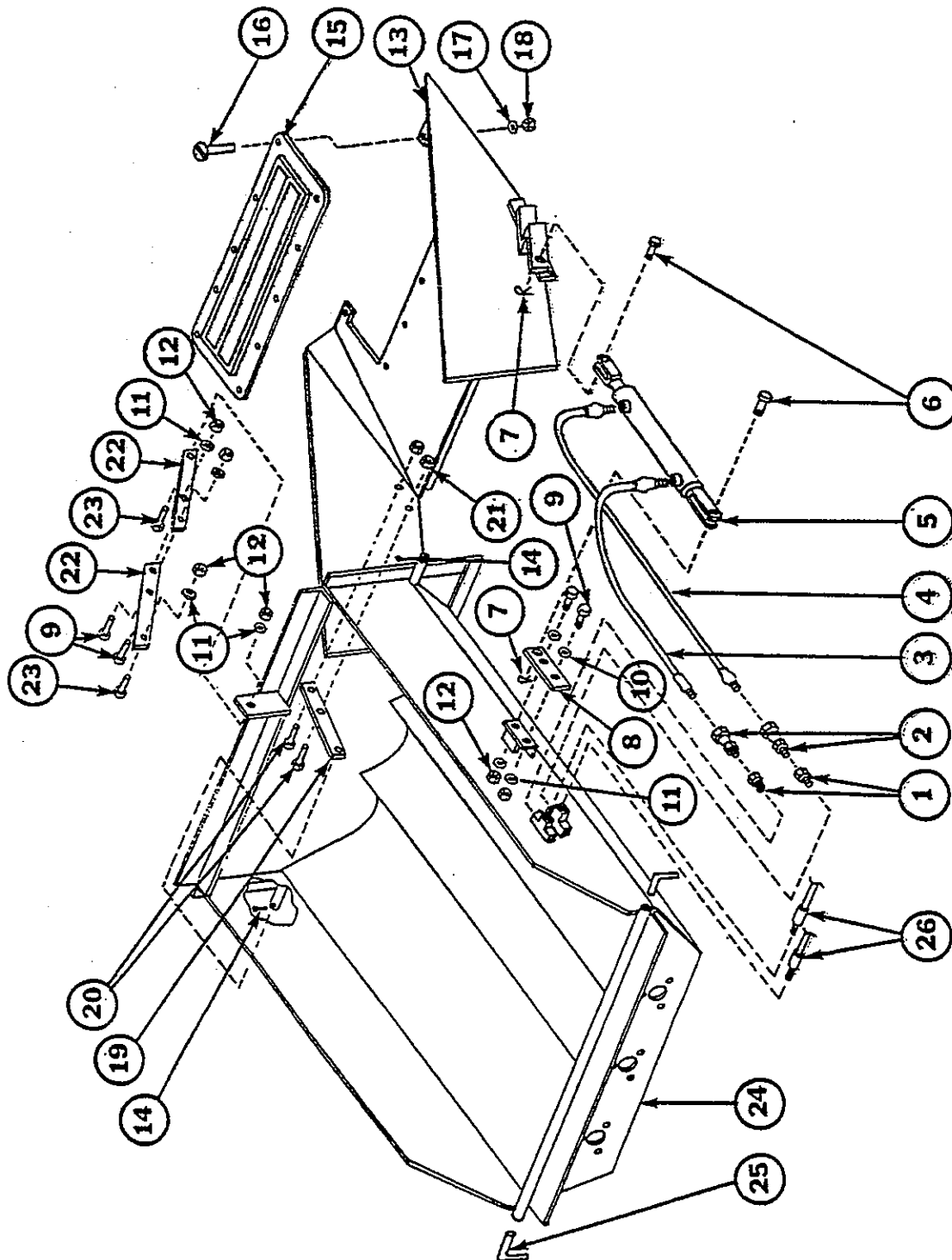
REVISED:

PAGE 16C



ALWAYS GIVE MODEL AND SERIAL NUMBER OF UNIT.
ORDER BY PART NUMBER, NOT FIGURE REFERENCE NUMBER.

TIPOFF PARTS 3-AUGER CHUTE



Printed in U.S.A.

KNIGHT MANUFACTURING CORP.

P.O. BOX 167 1401 WEST 8TH AVE.
BRODHEAD, WISCONSIN 53520
PHONE: (608) 897-2131 CABLE: KNIGHT

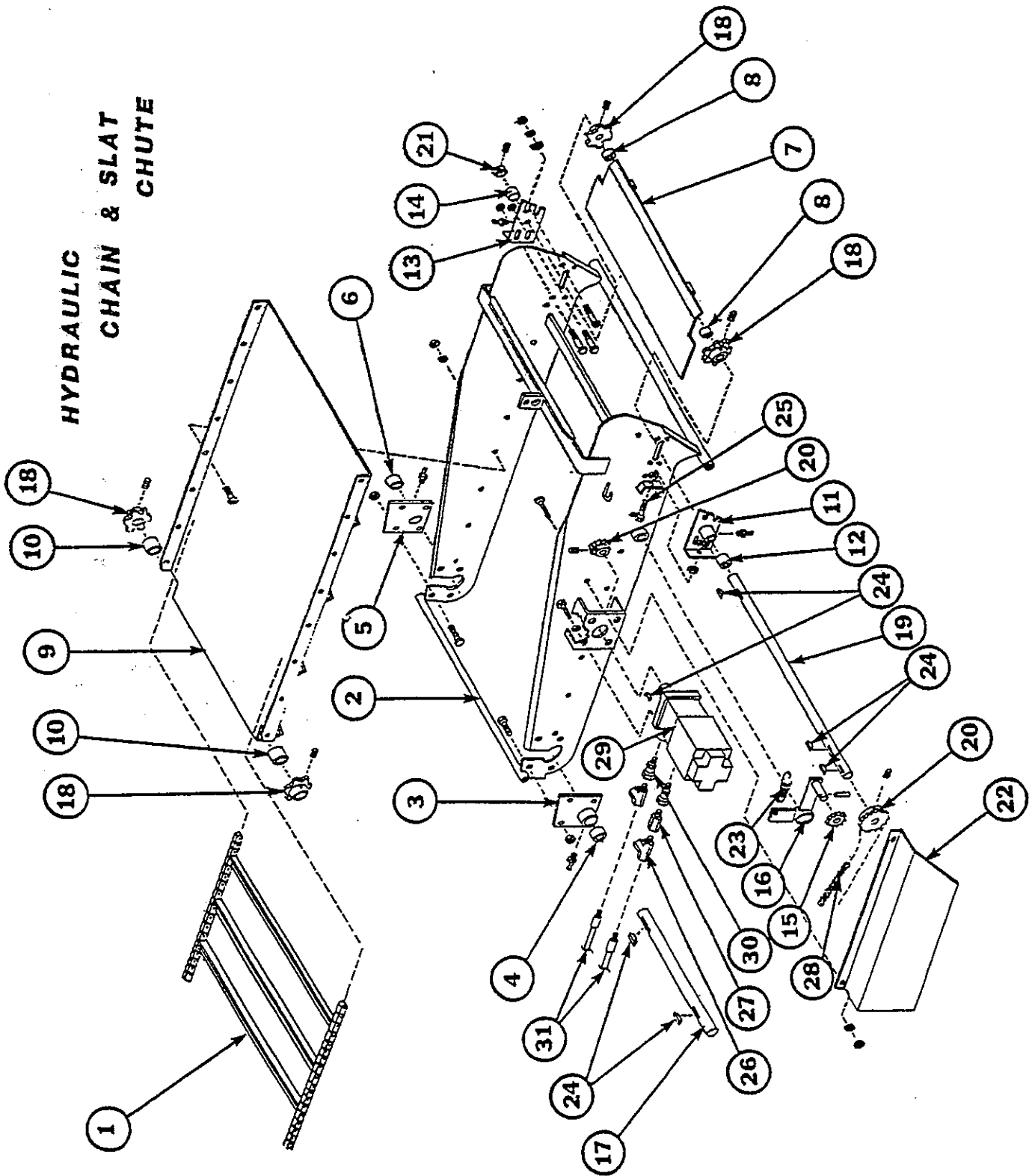
REVISED:

PAGE 16D



ALWAYS GIVE MODEL AND SERIAL NUMBER OF UNIT.
ORDER BY PART NUMBER, NOT FIGURE REFERENCE NUMBER.

**HYDRAULIC
CHAIN & SLAT
CHUTE**



Printed in U.S.A.

KNIGHT MANUFACTURING CORP.

P.O. BOX 167 .1401 WEST 8TH AVE.
BRODHEAD, WISCONSIN 53520

PHONE: (608) 897-2131 CABLE: KNIGHT

REVISED:

PAGE
BA-17

CHAIN & SLAT CHUTE ASS'Y



ALWAYS GIVE MODEL AND SERIAL NUMBER OF UNIT.
ORDER BY PART NUMBER, NOT FIGURE REFERENCE NUMBER.

REF	PART NO	DESCRIPTION	QTY
1	101-248	Chain and Slat Chute Assembly with Tip-off	1
	101-304	Apron Assembly; CA620	AR
	101-305	Slat Assy with Attachment Links	AR
	171-285	Link; CA620 Roller	AR
	171-288	Link; CA620 Connector	AR
	171-287	Link; CA620 Offset	AR
	170-360	Pin	AR
	170-364	Cotter Key; 3/32 x 3/4	AR
2	101-558	Chute Shell	1
3	100-054	RH Apron Idler Bearing	1
	170-023	Zerk; 1/4 - 28 NF Straight	1
4	170-024	Bushing; 1 x 1 1/4 x 1 Bronze	1
	(See Bottom of Page for Mounting Hardware)		
5	100-055	LH Apron Idler Bearing	1
	170-023	Zerk; 1/4 - 28 NF Straight	1
6	170-024	Bushing; 1 x 1 1/4 x 1 Bronze	1
	(See Bottom of Page for Mounting Hardware)		
7	100-056	Driveshaft Shield Assembly	1
8	170-024	Bushing; 1 x 1 1/4 x 1 Bronze	2
9	100-487	Tray Bottom Assembly - Mounts with	1
10	170-024	Bushing; 1 x 1 1/4 x 1 Bronze	2
	Tray Mounts to chute Assembly with		
	170-124	Washer; 1/4 Lock	16
	170-125	Nut; 1/4 - 20 NC Hex	16
	170-803	Bolt; 1/4 - 20 NC x 3/4 OH	16
11	100-488	RH Apron Tightener Bearing	1
	170-023	Zerk; 1/4 - 28 NF Straight	1
12	170-024	Bushing; 1 x 1 1/4 x 1 Bronze	1
	(See Bottom of Page for Mounting Hardware)		
13	100-489	LH Apron Tightener Bearing	1
	170-023	Zerk; 1/4 - 28 NF Straight	1
14	170-024	Bushing; 1 x 1 1/4 x 1 Bronze	1
	(See Bottom of Page for Mounting Hardware)		
15	101-250	Chain Tightener Assembly	1
	100-708	Sprocket; 50-B-13 Idler	1
	170-039	Bushing; 5/8 x 3/4 x 1 Bronze	1
16	101-251	Tightener Arm	1
	170-484	Roll Pin; 3/16 x 1 1/2	1
17	130-224	Shaft; Apron Idler 1 x 33 1/8	1
18	130-226	Sprocket; 6T 1" D, 1/4" KW	4
	170-248	Setscrew; 5/16 - 18 NC x 5/16	1
19	130-233	Shaft; Apron Drive 1 x 35 1/4	1

REF	PART NO	DESCRIPTION	QTY
20	130-710	Sprocket; 50-B-21 1" B 1/4" KW	2
	170-248	Setscrew; 5/16 - 18 NC x 5/16	1
21	130-817	Collar; 1 3/4 x 1 x 5/8	1
	170-248	Setscrew; 5/16 - 18 NC x 5/16	1
22	132-770	Chute Drive Shield - Mounts with	1
	170-124	Washer; 1/4" Lock	2
	170-125	Nut; 1/4" Hex	2
	170-803	Bolt; 1/4 - 20 NC x 3/4 OH	2
	170-110	Spring; Chain Tightener 24 Coils	1
23	170-120	Key; #807 Woodruff 1/4 x 7/8	6
24	170-128	Bolt; Apron Tightener 3/8 x 2 1/2 Mach.	2
	170-007	Nut; 3/8 Hex	3 ea Bolt
26	170-859	Service Tee; 1/2" NPT	2
27	171-151	Check Valve; 1/2" NPT	1
28	171-197	Chain; #50-1-89 p. ASA Roller	1
	170-088	Connector Link	1
29	171-666*	Motor; 12 cu. in. Hydraulic - Mounts w/	1
	170-006	Washer; 3/8 Lock	4
	170-054	Bolt; 3/8 - 16 NC x 1	4
30	171-668	Adapter; 1/2" Straight Thread	2
31	171-335	Hydraulic Hose; 1/2 x 132	2
		Chute to Tractor - Not included with Chute	

*The 12 cu. in. Motor uses O-Ring Ports.
See Following Page for Tip-off Assy.

Apron Idler Bearings Mount with

170-028 Nut; 5/16 Flange Lock
170-262 Bolt; 5/16 NC x 3/4

4 ea Brg
4 ea Brg

Apron Drive Bearings Mount with

170-028 Nut; 5/16 Flange Lock
170-117 Bolt; 5/16 x 1 OH
170-118 Washer; 5/16 Flat
170-119 Nut; 5/16 NC
170-127 Washer; 5/16 Flat
170-262 Bolt; 5/16 NC x 3/4

2 ea Brg
1 ea Brg
1 ea Brg
1 ea Brg
1 ea Brg
2 ea Brg



Printed in U.S.A.

KNIGHT MANUFACTURING CORP.

P.O. BOX 167 1501 WEST 7TH AVE.

BROOKHEAD, WISCONSIN 53320

PHONE - GENL. OFFICE (608) 897-2131

PHONE - PARTS DEPT. (608) 897-2125

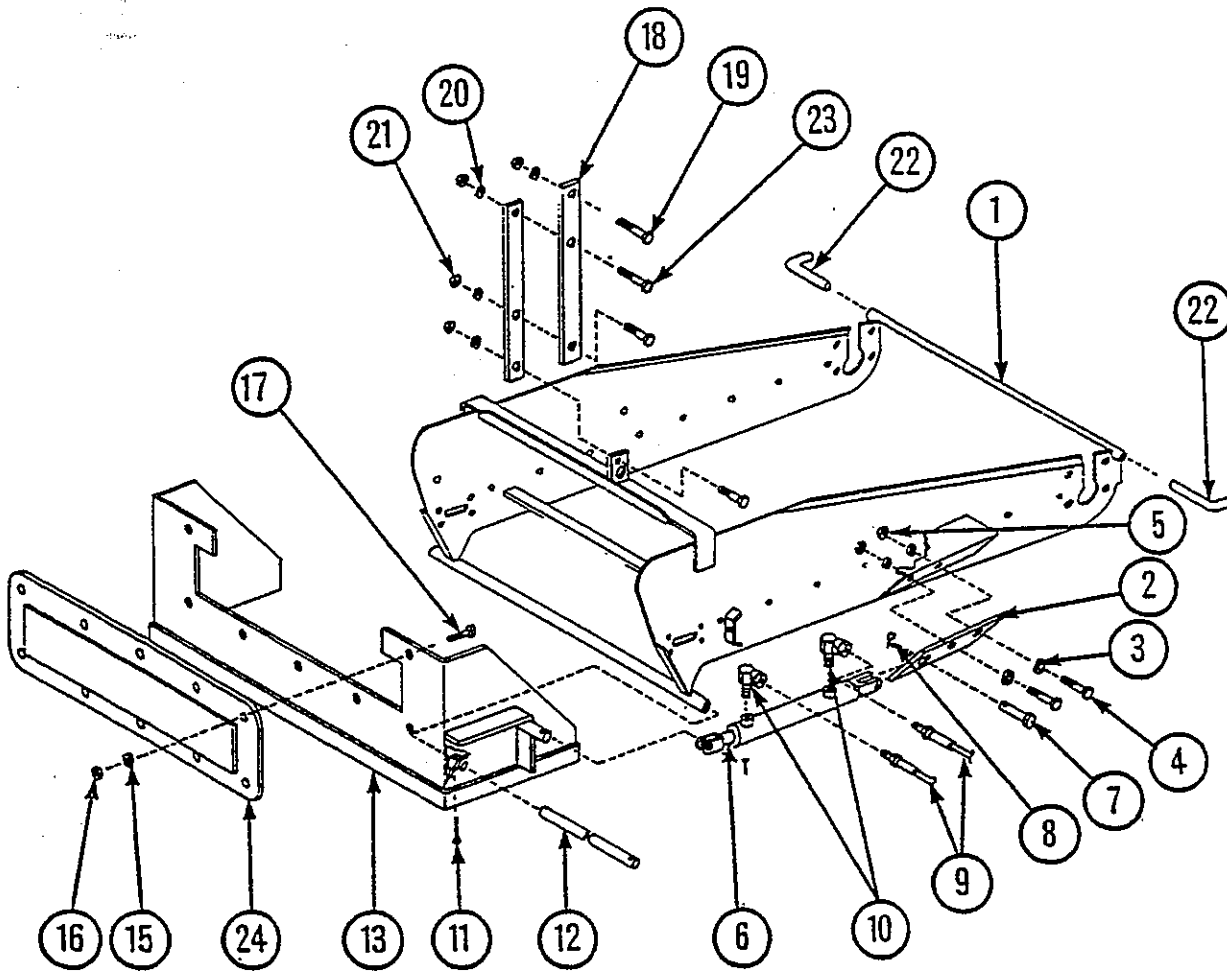
CABLE: KNIGHT

REVISED:



ALWAYS GIVE MODEL AND SERIAL NUMBER OF UNIT.
ORDER BY PART NUMBER, NOT FIGURE REFERENCE NUMBER.

CHAIN & SLAT TIP-OFF



Printed In U.S.A.

KNIGHT MANUFACTURING CORP.

P.O. BOX 167 1401 WEST 8TH AVE.

BRODHEAD, WISCONSIN 53520

PHONE: (608) 897-2131

CABLE: KNIGHT

REVISED:

PAGE BA-19



ALWAYS GIVE MODEL AND SERIAL NUMBER OF UNIT.
ORDER BY PART NUMBER, NOT FIGURE REFERENCE NUMBER.

CHAIN & SLAT TIPOFF

BA LA

REF	PART NO	DESCRIPTION	QTY	QTY
1	101-588	Chute Shell Assembly	1	
2	132-974	Cylinder Attachment Bar	1	
3	170-040	Washer; 1/2 Flat	2	
4	170-002	Bolt; 1/2 - 13 NC x 1 1/2	2	
5	170-004	Nut; 1/2 - 13 NC	2	
6	170-941	Hydraulic Cylinder*; 2 x 8	1	
7	170-073	Cylinder Pin	1	
8	171-077	Hairpin Clip	1	
9	171-663	Hydraulic Hose; 1/4 x 50	2	
10	171-030	Elbow; 3/8 NPT Swivel	2	
11	170-115	Cotter Pin; 3/16 x 2	2	
12	133-377	Tip-off Hinge Pin	1	
13	101-557	Tip-off	1	
14	132-834	Magnet Blank (Not shown)	AR	
15	170-118	Lockwasher; 5/16	7	
16	170-119	Nut; 5/16 - 18 NC	7	
17	170-117	Bolt; 5/16 - 18 NC x 1 OH	7	
18	131-417	Height Adjustment Bar	1	2
19	170-050	Bolt; 1/2 - 13 NC x 2	2	2
20	170-003	Lockwasher; 1/2	4	6
21	170-004	Nut; 1/2 - 13 NC	2	4
22	131-583	Hinge Pin	2	2
23	170-002	Bolt; 1/2 - 13 NC x 1 1/2		2
24	171-258	Magnet	1	

*Use #170-075 seal kit for repair.



Printed in U.S.A.

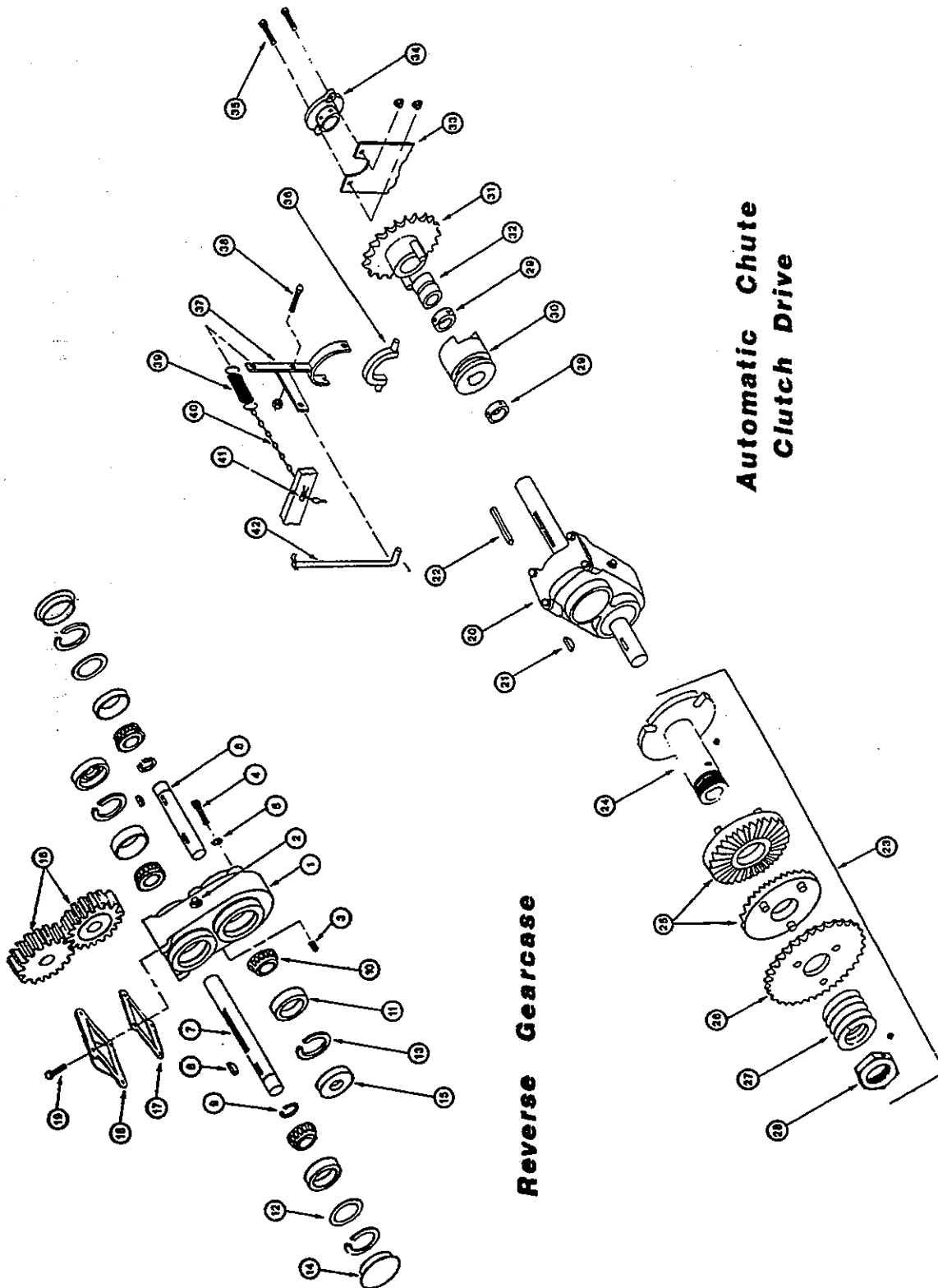
KNIGHT MANUFACTURING CORP.

P.O. BOX 167 1501 WEST 7TH AVE.
BRODHEAD, WISCONSIN 53520
PHONE - GENL. OFFICE (608) 897-2131
PHONE - PARTS DEPT. (608) 897-2125
CABLE: KNIGHT

REVISED:

PAGE BA-20

ALWAYS GIVE SERIAL NUMBER OF MACHINE AND MODEL
ORDER BY PART NUMBER, NOT FIGURE REFERENCE NUMBER



KNIGHT MANUFACTURING CORP.
BRODHEAD, WISCONSIN

**ALWAYS GIVE SERIAL NUMBER OF MACHINE AND MODEL
ORDER BY PART NUMBER, NOT FIGURE REFERENCE NUMBER**

Ref. Part No.	Description	Q.	Ref. Part No.	Description	Q.
1	170-529 Gearcase Housing	1	11	170-555 Bearing Race	4
2	170-541 Fill Plug	1	12	170-537 Shim	as req.
3	170-542 Vent Plug	1	13	170-536 Snap Ring	4
4	170-149 Mount Bolt; 1/2 x 1 cs	4	14	170-539 Dust Cap	2
5	170-003 Lockwasher; 1/2"	4	15	170-538 Grease Seal	2
6	130-200 Input Shaft; 1 x 7 3/8"	1	16	170-533 Gear; 27 t. 1" b. 1/4" kw	2
7	130-050 Output Shaft; 1 x 1 1/2"	1	17	170-531 Gasket	1
8	170-120 Key; Type A Woodruff	2	18	170-530 Cover	1
9	170-540 Snap ring	2	19	170-532 Bolt for Cover 5/16 x 5/8"	4
10	170-534 Bearing Cone	4			

Ref.	Part No.	Description	Clutch Clutch Parts	Q.
20	170-697	Gearcase Assembly		
21	170-120	Key; Type A Woodruff 1/2" x 7/8" (slip clutch)		1
22	170-498	Key; 1/2 x 1/2 x 3 3/4" (sliding clutch)		1
23	170-730	Slip Clutch Assembly; 27 t.		1
24	170-610	Hub; includes 170-151 (3/8NC x 3/8 set screw) (1)		1
25	170-520	Set of 2 jaws		1
26	170-831	Sprocket; 50-A-27 t.		1
27	170-496	Spring		1
28	170-516	Nut: 1 3/4" hex; includes 170-247 (1/2NC x 1/2" set screw) (1)		1
29	130-394	Collar; 1 x 1 3/4 x 5/8" keyed includes 170-825 (5/16NC x 5/16 set screw) 2 ea. collar		2
30	170-606	Sliding Clutch Jaw; 1" b. 1/4" kw.		1
31	100-015	Clutch Sprocket; 21 t. (includes 170-023 zerk)		1
32	170-024	Bushing; 1 x 1 1/2 x 1" Lg.		2
33	130-759	Outboard Bearing Mount		1
34	170-026	Bearing; 1" flange ball type		1
35	170-027	Mounting Bolts; 5/16 x 1 cap screw		2
	170-028	Flange Locknut; 5/16		2
36	170-611	Brass Yoke		1
37	100-025	Clutch Lever Assembly		1
38	170-005	Mount Bolt for Clutch Lever; 3/8 x 1 1/2" Also use 170-047 (3/8 locknut)		1
39	170-111	Spring;		1
40	170-479	Spring Retainer Chain; #4 Machine Chain x 8 links		1
41	170-800	Linch Pin		1
42	130-107	Clutch Control Rod		1
	170-033	Cotter Pin; 1/8" x 1 1/2" Lg.		1

Repair Instructions for the Auggie Reverse Gearcase

Disassembly:

Remove the dust cap and the snap ring from the housing. (Output Shaft)
From the end that the output shaft extends, drive the shaft thru the case. One gear and bearing will drop inside the case. The 1" snap ring will push the other bearing and race from the case.
Remove the seal and race left in the housing, check all bearings and races, the gear and shaft. Replace any parts that are damaged or worn.
Use the same procedure if the input shaft needs to be removed.

Assembly:

From the opposite side that the housing mounts to the unit, install one race and snap ring in the housing.
Install the 1" snap ring and key for the gear on the input shaft, and install the shaft in the housing at the mounting side. NOTE: Be sure to install the gear, then the bearing as the shaft goes thru the housing.
Install the mounting side bearing, race & snap ring. If the shaft is loose in the housing, shims will have to be installed for proper fit.

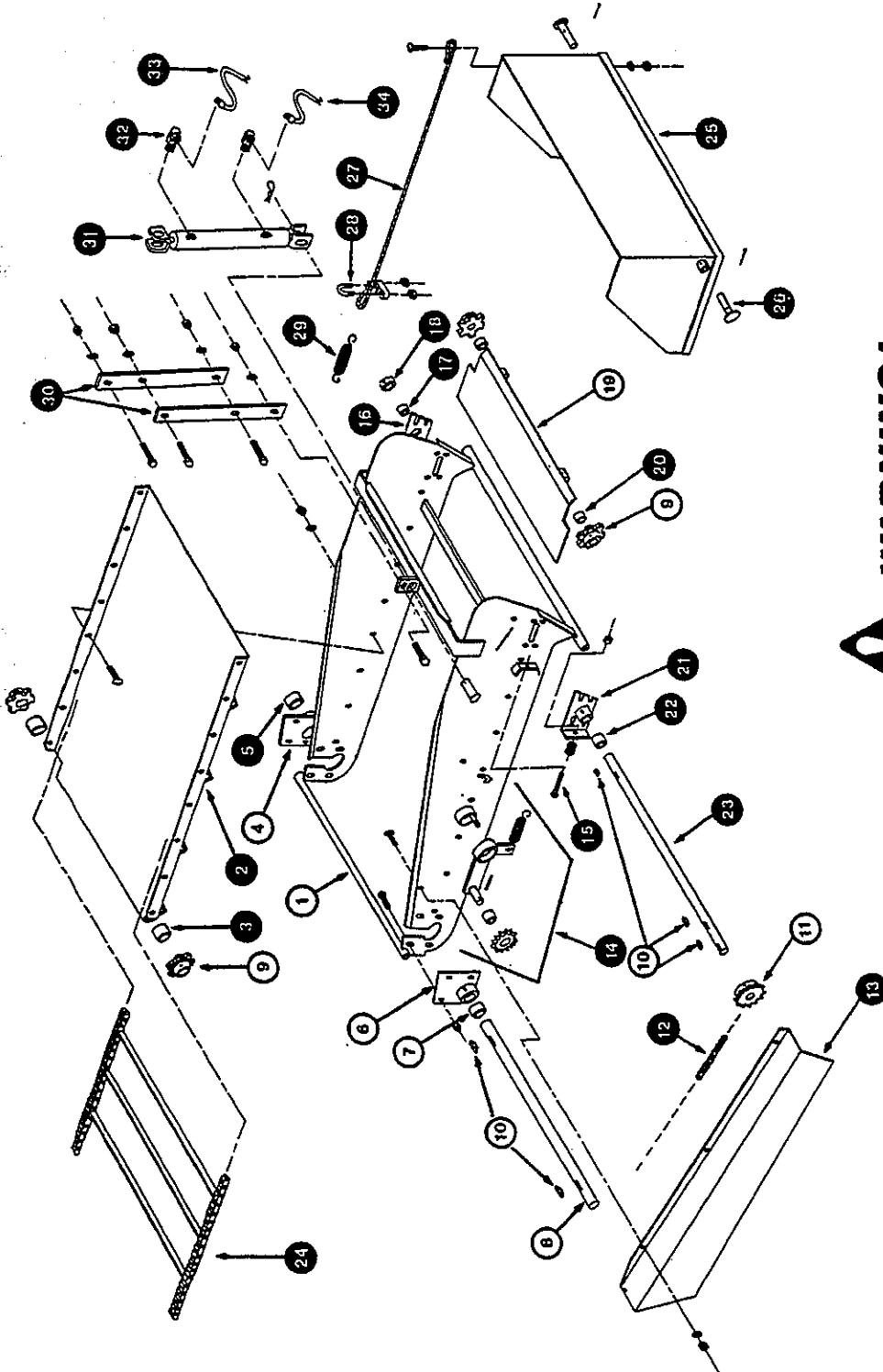
Mounting Instructions:

After the gearcase is assembled, check the gearcase mount on the unit and straighten by eyesight.
Assemble all parts on the output shaft including the outboard bearing mount:
If this mount is still welded to the unit, cut the mount from the unit and bolt it to the bearing.
Attach the gearcase to the mount, and be sure to tighten all four mounting bolts. The outboard bearing mount should rest along the frame. Weld the mount to the frame at this point. Do not try to position the plate where it originally was.
Adjust the collars and clutch assembly. Attach the slip clutch, roller chains, and be sure all set screws are tight.
Fill the Gearcase to plug level with a Multi-vis. 85W-140 gear lube.



KNIGHT MANUFACTURING CORP.
BRODHEAD, WISCONSIN

ALWAYS GIVE SERIAL NUMBER OF MACHINE AND MODEL
ORDER BY PART NUMBER, NOT FIGURE REFERENCE NUMBER



WARNING!
STAY CLEAR

TIP-OFF RETURNS RAPIDLY



KNIGHT MANUFACTURING CORP.
BRODHEAD, WISCONSIN

**ALWAYS GIVE SERIAL NUMBER OF MACHINE AND MODEL
ORDER BY PART NUMBER, NOT FIGURE REFERENCE NUMBER**

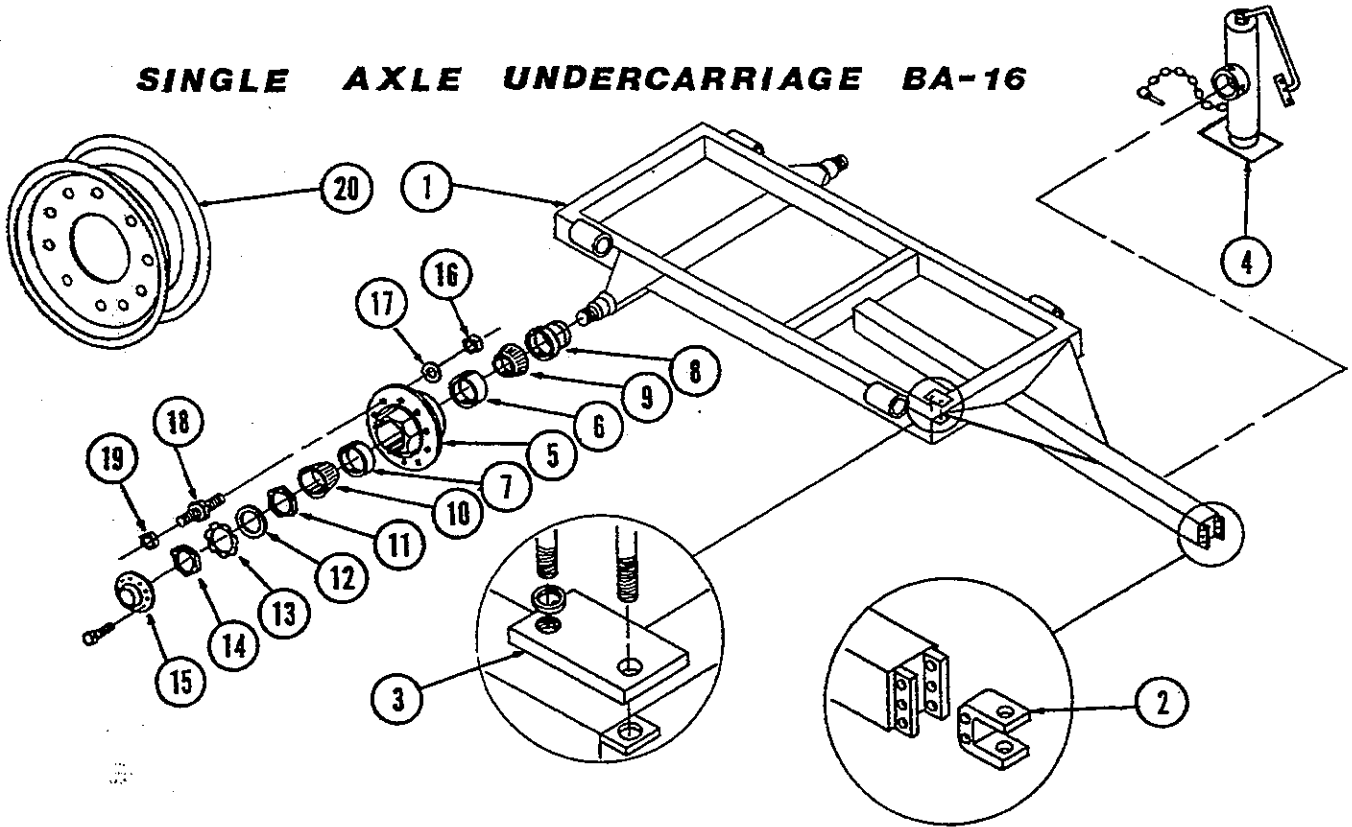
<u>Ref.</u>	<u>Part No.</u>	<u>Description</u>	<u>Discharge Chute</u>	<u>Q.</u>
	100-482	Discharge Chute Assembly		
1	100-483	Chute Shell Assembly		1
2	100-487	Tray Bottom Assembly; includes 170-023 zerk; mounts to chute shell with 170-193 ($\frac{3}{4}$ x 3/4 OH bolt); 170-124 ($\frac{1}{2}$ lw); 170-125 ($\frac{3}{4}$ n)		16 ea.
3	170-164	Bushing; 1 x $1\frac{1}{2}$ x $1\frac{1}{2}$		2
4	100-055	LH Apron Idler Bearing Assembly; includes 170-023 zerk; mounts to chute with 170-262 (5/16 x 3/4 cs); 170-028 5/16 flange locknut		4 ea.
5	170-164	Bushing; 1 x $1\frac{1}{2}$ x $1\frac{1}{2}$		1
6	100-054	RH Apron Idler Bearing Assembly; includes 170-023 zerk; mounts to chute with 170-262 (5/16 x 3/4 cs); 170-028 (5/16 flange locknut)		4 ea.
7	170-164	Bushing; 1 x $1\frac{1}{2}$ x $1\frac{1}{2}$		1
8	130-224	Shaft; Apron Idler 1" x 33 1/8"		1
9	130-226	Sprocket; Apron Idler & Drive 1" b. $\frac{1}{2}$ " kw 6 t. forged includes 170-248 (5/16NC x 5/16 set screw)		4
10	170-120	Key; Type A Woodruff $\frac{1}{2}$ x 7/8" used for apron sprockets and chute drive sprocket		1 ea.
11	130-826	Sprocket; 50-B-18 1" b. $\frac{3}{4}$ " kw. Chute Drive Sprocket includes 170-248 (5/16NC x 5/16 set screw)		5
12	170-272	Roller Chain; #50-1 ASA x 167 p.		1
	170-088	Connector Link; #50-1 ASA		1
	170-096	Offset Link; #50-1 ASA		1
13	131-418	Shield for Chute Drive; mounts to chute with 170-193 ($\frac{3}{4}$ x 3/4 OH bolt); 170-124 ($\frac{1}{2}$ lw); 170-125 ($\frac{3}{4}$ n)		1
14	100-475	Chain Tightener Assembly		3 ea.
	100-479	Tightener Arm Assembly		1
	100-708	Sprocket; Roller Chain Idler 50-B-13		1
	170-039	Bushing; 5/8 x 3/4 x 1		1
	170-454	Roll Pin; 3/16 x $1\frac{1}{2}$		1
	170-110	Spring		1
15	170-128	Bolt; Apron Tightener; 3/8 x 2 $\frac{1}{2}$ " full thread; also use 170-007 (3/8" hex nut)		2
16	100-489	LH Apron Chain Tightener Bearing Assembly; includes 170-023 zerk; Rear bearing bolts: 170-262 (5/16 x 3/4 cs); 170-028 (5/16 flange locknut) - 2 ea. Front bearing bolt: 170-117 (5/16 x 1 OH bolt); 170-127 (5/16 fw); 170-118 (5/16 lw) 170-119 (5/16 hex nut)		3 ea.
17	170-024	Bushing; 1 x $1\frac{1}{2}$ x 1		1
18	130-817	Collar; 1 x 1 3/4 x 5/8" E. includes 170-248 set screw (2)		1
19	100-056	Drive Shaft Shield Assembly		1
20	170-024	Bushing; 1 x $1\frac{1}{2}$ x 1		1
21	100-488	RH Apron Tightener Bearing Assembly; includes 170-049 zerk Rear Bearing Bolts: 170-262 (5/16 x 3/4 cs); 170-028 (5/16 flange locknut) 2 ea. -- Front bearing bolt; 170-117 (5/16 x 1 OH bolt); 170-127 (5/16 fw); 170-118 (5/16 lw) 170-119 (5/16 hex nut)		1 ea.
22	170-055	Bushing; 1 x $1\frac{1}{2}$ x $1\frac{1}{2}$		1
23	130-233	Shaft; Apron Drive 1" x 35 $\frac{1}{2}$ "		1
24	100-476	Apron Assembly; D662 pintle chain 63 Total Links per Side		1
	170-358	D662 Plain Link	53 per side chain	
	170-360	Pin	2 per link	
	170-364	Cotter Pin; 3/32 x 3/4"	2 per link	
	170-359	D662 Attachment Link with 2 Plain Links pin and cotters	as req.	
	100-478	D662 Slat Assembly with pins & cotters	as req.	
NOTE: The following parts are not part of the chute assembly.				
25	100-050	Tip-Off Tray		
26	100-049	Pivot Pin Assembly; includes 170-115 (3/16 x 2 cotter Pin)		2
27	170-114	Cable; tip-off control 3/16" x 42" Lg. mounts to tip-off with 170-117 (5/16 x 1 OH bolt); 170-118 (5/16 lw); 170-119 5/16 hex nut		1
28	170-472	Clamp; 3/16" for wire cable		1 ea.
29	170-111	Spring		1
30	131-417	Mechanical Chute Adjustment Bar; Uses 170-050 ($\frac{3}{4}$ x 2 cs) (2); 170-002 ($\frac{1}{2}$ x $1\frac{1}{2}$) (1); 170-003 ($\frac{1}{2}$ lw); 170-004 ($\frac{1}{2}$ n)		2
31	170-941	Hydraulic Cylinder; 2" x 8" includes 170-073 pin & 171-077 hairpin clip		3 ea.
	170-075	Repair Kit		1
32	171-030	Swivel Connector -90 degree- 3/8" NPT		as req.
33	170-467	Hydraulic Hose; $\frac{1}{2}$ x 12'6" with 3/8" NPT male ends		2
34	170-471	Hydraulic Hose; $\frac{1}{2}$ x 14' with 3/8" NPT male ends		1



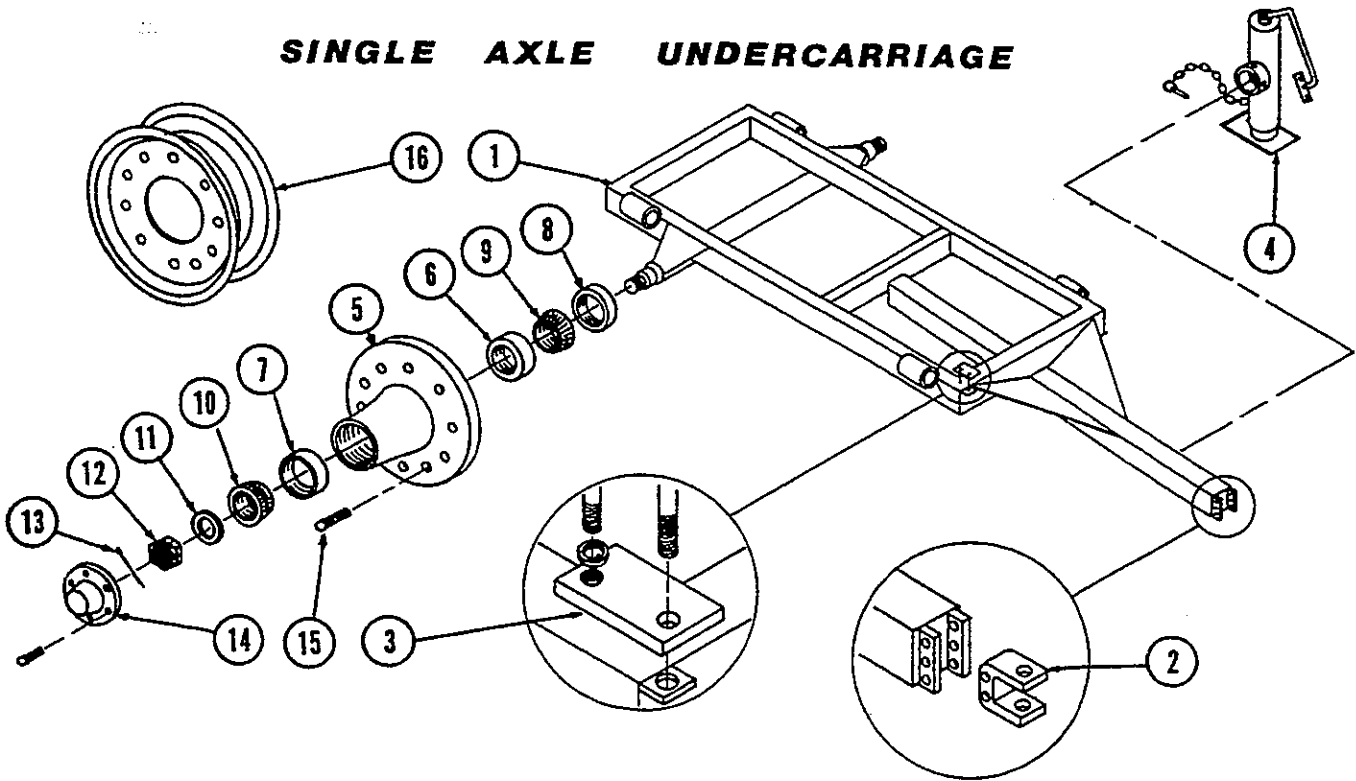
KNIGHT MANUFACTURING CORP.
BRODHEAD, WISCONSIN

ALWAYS GIVE SERIAL NUMBER OF MACHINE AND MODEL
ORDER BY PART NUMBER, NOT FIGURE REFERENCE NUMBER

SINGLE AXLE UNDERCARRIAGE BA-16



SINGLE AXLE UNDERCARRIAGE



KNIGHT MANUFACTURING CORP.
BRODHEAD, WISCONSIN



ALWAYS GIVE MODEL AND SERIAL NUMBER OF UNIT.
ORDER BY PART NUMBER, NOT FIGURE REFERENCE NUMBER.

Ref.	Part No.	Description	Single Axle Undercarriage Assembly	BA-16	Q.
	101-101	Single Axle Undercarriage Assembly Complete			1
1	100-982	Undercarriage Assembly Less Bolt-On Parts			1
2	132-649	Adjustable Clevis; 171-116 (3/4 x 6 grade 5 cs); 170-016 (3/4 lockwasher); 170-017 (3/4 hex nut)			1 2 ea.
3	132-575	Spacer Bar; Not Used With Scale Installation			4
		170-009 (5/8 x 2 cs); 171-087 (5/8 x 1 grade 5 cs); 170-010 (5/8 lockwasher); 170-031 (5/8 locknut)			4 ea. 4 ea.
4	171-610	Jackstand Assembly			1
	170-762	10-Bolt Hub Complete Less Spindle			2
5	170-696	Hub Assembly with Races Only			
6	170-691	Bearing Race - Inner #653 #308107		1 ea. hub	
7	170-811	Bearing Race - Outer #HM212011 #308108		1 ea. hub	
8	170-848	Grease Retainer #320-2109 & 1013		1 ea. hub	
9	170-690	Bearing Cone - Inner #663 #104101		1 ea. hub	
10	170-810	Bearing Cone - Outer #HM212049 #104108		1 ea. hub	
11	170-474	Spindle Nut with Peg #103103-002		1 ea. hub	
12	170-475	Lockwasher with Holes #105107		1 ea. hub	
13	170-476	Lockwasher with Tabs #105106		1 ea. hub	
14	170-477	Spindle Nut #3404009		1 ea. hub	
15	170-522	Hubcap with 170-262 (5/16 x 3/4 cs) (6)		1 ea. hub	
16	170-159	Inside Nut; 3/4 NF Hex		10 ea. hub	
17		Spacer Washer		10 ea. hub	
18	170-523	Wheel Stud; 3/4 NF		10 ea. hub	
19	170-525	Outside Nut; 3/4 NF		10 ea. hub	
20	171-616	Wheel; 22.5 x 13 Drop Center (10 hole)			2
20	170-900	Wheel; 20 x 8 Snap Ring (10 hole)			2

Ref.	Part No.	Description	Single Axle Undercarriage Assembly	Q.
	101-098	Single Axle Undercarriage Complete for BA-12 & BA-12C		1
1	101-173	Single Axle Undercarriage Assembly Less Bolt-On Parts		1
	101-100	Single Axle Undercarriage Complete for BA-14		1
1	101-088	Single Axle Undercarriage Assembly Less Bolt-On Parts - The Following Parts Are Common To Both Trailers -		1
2	132-649	Adjustable Clevis; 171-116 (3/4 x 6 grade 5 cs); 170-016 (3/4 lockwasher); 170-017 (3/4 hex nut)		1 2 ea.
3	132-575	Spacer Bar; Not Used With Scale Installation		4
		170-009 (5/8 x 2 cs); 171-087 (5/8 x 1 grade 5 cs); 170-010 (5/8 lockwasher); 170-031 (5/8 locknut)		4 ea. 4 ea.
4	170-984	Jackstand Assembly		1
	170-929	10-Bolt Hub Assembly less Spindle		2
5	170-917	Hub Assembly with Bearing Races		
6	170-924	Bearing Race - Inner #130-463200		1 ea. hub
7	170-924	Bearing Race - Outer #130-078100		1 ea. hub
8	170-925	Grease Retainer C/R 30087		1 ea. hub
9	170-923	Bearing Cone - Inner #39585		1 ea. hub
10	170-921	Bearing Cone - Outer #453A		1 ea. hub
11	170-928	Washer; 1 1/4" Flat Heavy		1 ea. hub
12	170-927	Spindle Nut; 1 1/4" NF		1 ea. hub
13	170-056	Cotter Key; 1/4 x 2"		1 ea. hub
14	170-926	Hub Cap; Includes 170-262 (5/16 x 3/4 cs) (4)		1 ea. hub
15	170-919	Wheel Stud; 3/4 NF - Also use 170-920 (3/4 NF nut)		10 ea. hub
16	170-900	Wheel; 20 x 8 Snap Ring (10 hole)		2
16	171-616	Wheel; 22.5 x 13 Drop Center (10 hole)		2



Printed in U.S.A.

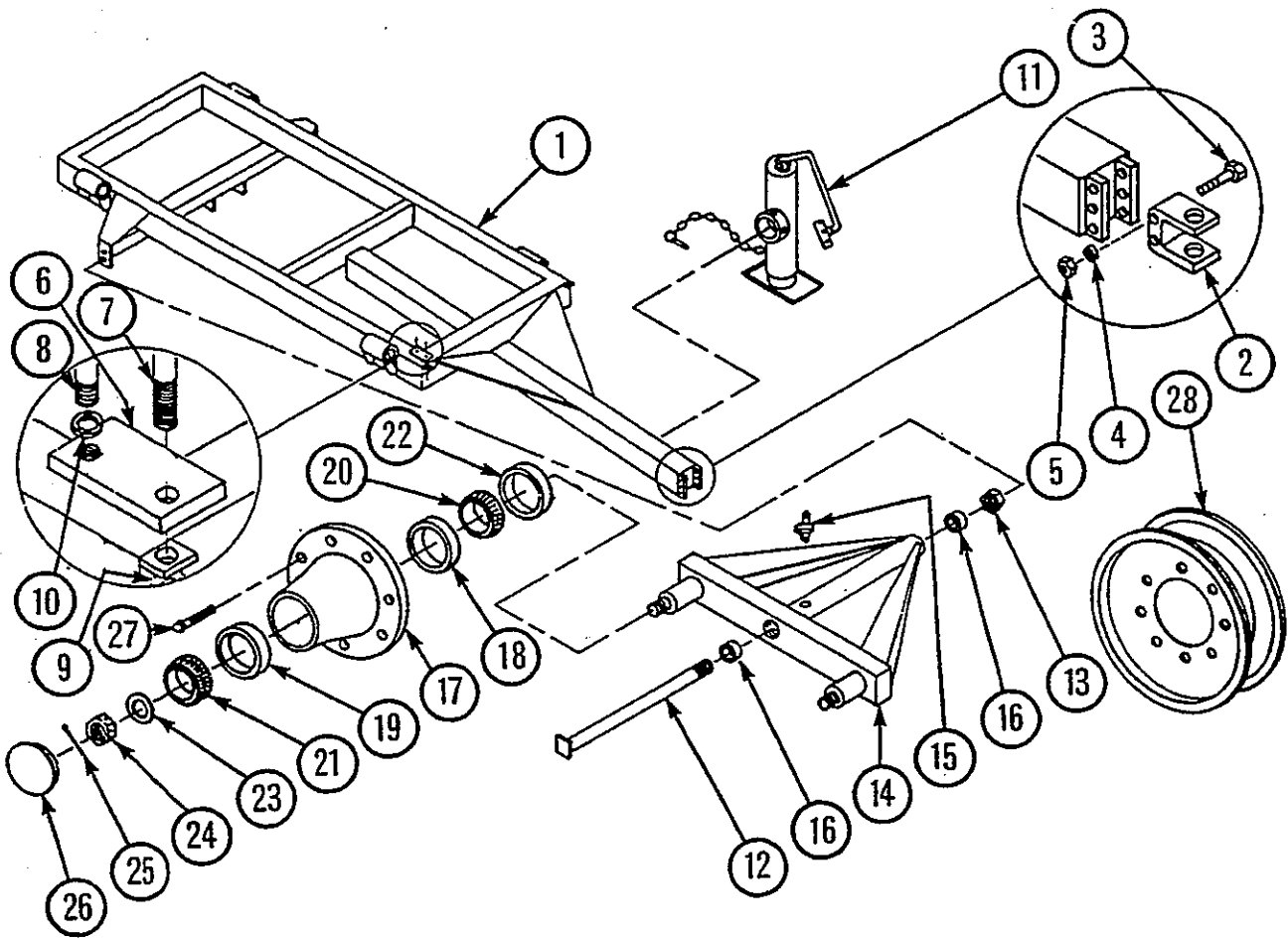
KNIGHT MANUFACTURING CORP.

P.O. BOX 167 1401 WEST 8TH AVE.
BRODHEAD, WISCONSIN 53520
PHONE: (608) 897-2131 CABLE: KNIGHT

REVISED: ECN 903 11-83

PAGE BA-24

8-BOLT OA UNDERCARRIAGE



REVISED: ECN 903 11-83



ALWAYS GIVE MODEL AND SERIAL NUMBER OF UNIT.
ORDER BY PART NUMBER, NOT FIGURE REFERENCE NUMBER.

8-BOLT OA UNDERCARRIAGE

REF	PART NO	DESCRIPTION	QTY
	101-097	8 Bolt OA Undercarriage Complete (BA-12)	1
1	101-174	8 Bolt OA Trailer Only	1
	101-099	8 Bolt OA Undercarriage Complete (BA-14)	1
1	101-091	8 Bolt OA Trailer Only	1
	101-516	8 Bolt OA Undercarriage Complete (BA-16)	1
1	101-410	8 Bolt OA Trailer Only	1
2	132-649	Adjustable Clevis	1
3	171-116	Bolt; 3/4 - 10 NC x 6 Grade 5	2
4	170-016	Lockwasher; 3/4	2
5	170-017	Nut; 3/4 - 10 NC	2
6	132-575	Spacer Bar; (Not used with scales)	4
7	170-009	Bolt; 5/8 - 11 NC x 2	4
8	171-087	Bolt; 5/8 - 11 NC x 1 Grade 5	4
9	170-031	Locknut; 5/8 - 11 NC	4
10	170-010	Lockwasher; 5/8	4
11	170-984	Jack; 5000 lb. (BA-12 & 14)	1
11	171-610	Jack; 7000 lbs.(BA-16 Only)	1
12		Axle Pin ; 1 1/4	2
13			
14	101-078	Bogie Assembly	2
15	170-023	Zerk; 1/4 - 28 NF Straight	1
16	170-171	Bushing; 1 1/4 x 1 1/2 x 1 1/2	2
17	170-705	8 Bolt Hub with Races Only	2
18	170-553	Bearing Race Inner #3720	1
19	170-546	Bearing Race Outer #14276	1
20	170-554	Bearing Cone Inner #3784	1
21	170-545	Bearing Cone Outer #14137A	1
22	170-556	Grease Retainer	1
23	170-131	Flatwasher; 7/8 Heavy	1
24	170-132	Nut; 7/8 - 14 NF Castle	1
25	170-236	Cotter Key; 5/32 x 1 1/2	1
26	170-550	Hub Cap	1
27	170-557	Wheel Stud; 9/16 - 18 NF	8
28	170-112	Wheel; 20 x 8 8 hole	4
28	170-844	Wheel; 15 x 10 8 Hole (NA on BA-16)	4



Printed in U.S.A.

KNIGHT MANUFACTURING CORP.

P O BOX 167 1401 WEST 8TH AVE

BRODHEAD, WISCONSIN 53520

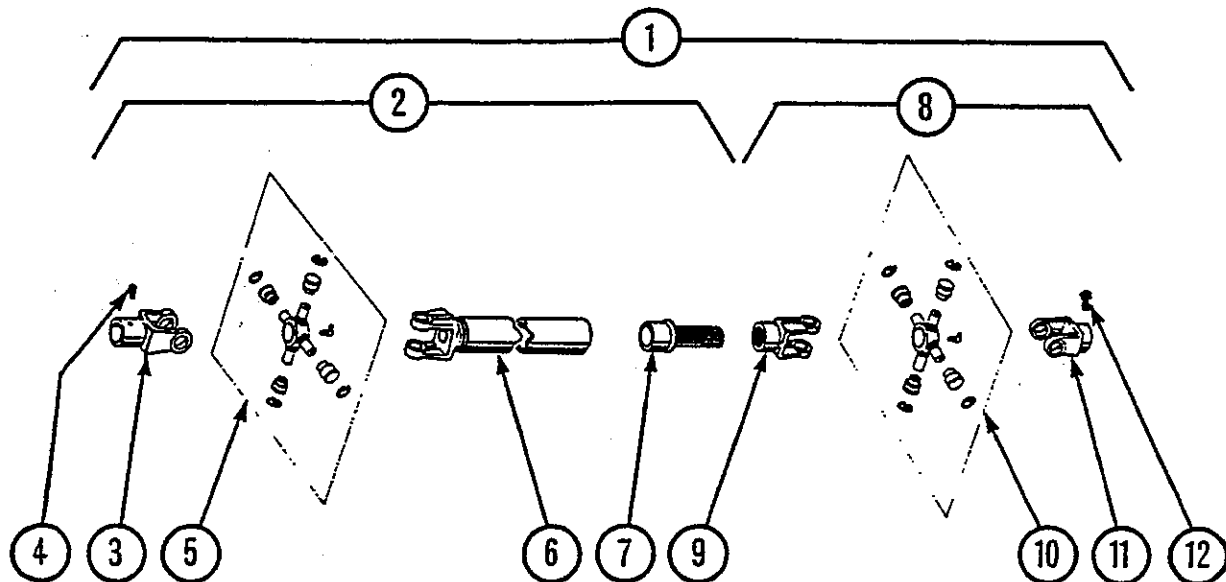
PHONE: (608) 897-2131

CABLE: KNIGHT

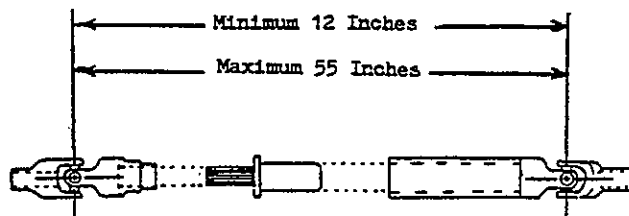
REVISED: ECN 903 11-83

PAGE BA-26

P.T.O. DRIVE

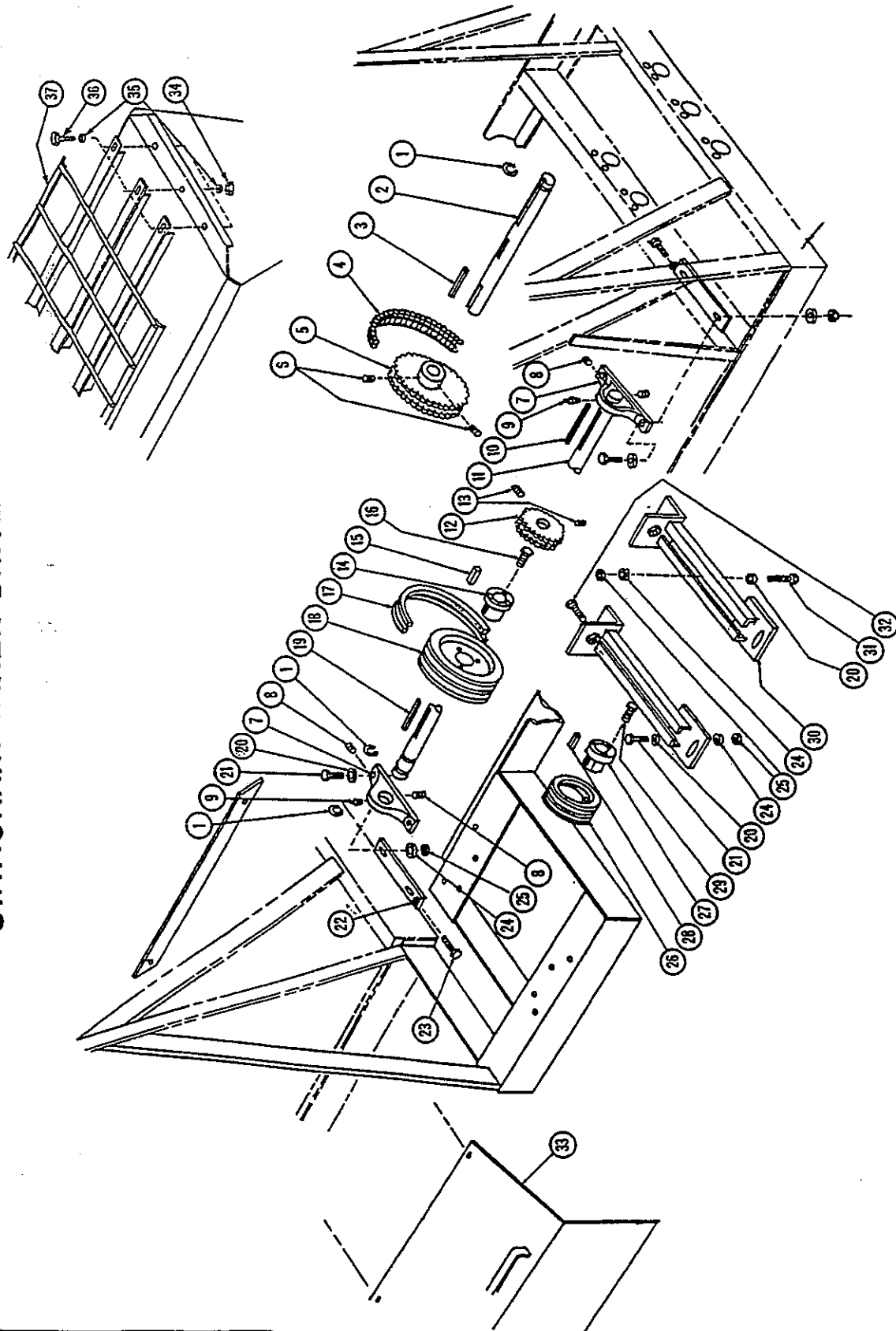


REF	PART NO	DESCRIPTION	QTY
1	171-318	Driveline Assembly	1
2	171-325	Joint, Tube & Spline Shaft	1
3	171-320	Yoke; 1 3/8	1
4	170-290	Setscrew; 3/8 - 16 NC x 3/4 Sq. HD	1
5	170-776	DN Repair Kit *	1
6	171-319	Yoke, Tube & Spline Shaft	1
7	171-324	Spline Shaft	1
8	171-321	Universal Joint	1
9	171-322	Yoke; 1 5/16 20 Spline	1
10	170-776	DN Repair Kit *	1
11	171-323	Yoke; 1 1/4	1
12	170-290	Setscrew; 3/8 - 16 NC x 3/4 Sq. HD	1



REVISED: ECN 931 4-84

STATIONARY MIXER DRIVE



NOTE: Motor Mount Rail #101-504 is interchangeable in PAIRS with cast rail #171-113 previously used in this application.

It is the responsibility of the person installing the stationary drive to fabricate and install shields to prevent accidental body or clothing contact with the drive train.



ALWAYS GIVE MODEL AND SERIAL NUMBER OF UNIT.
ORDER BY PART NUMBER, NOT FIGURE REFERENCE NUMBER.

STATIONARY MIXER DRIVE

REF	PART NO	DESCRIPTION	QTY	REF	PART NO	DESCRIPTION	QTY
1	170-499	Snap Ring; 1 3/8 External	3	20	170-138	Flatwasher; 7/16	12
2	132-598	Shaft; Front Counter, 1 3/8 x 21 1/4	1	21	170-050	Bolt; 1/2 - 13 NC x 2	8
3	171-410	Key; 3/8 x 3/8 x 1 7/8	1	22	170-036	Jam Nut; 1/2 - 13 NC	2
4	171-100	Roller Chain; #50-2R-68 Pitches	1	23	171-099	Machine Bolt; 1/2 - 13 NC x 2 1/2	2
5	170-094	Connector Link; #50-2R	1	24	170-003	Lockwasher; 1/2	12
6	132-574	Sprocket; #50-2R-B-32T	1	25	170-004	Nut; 1/2 - 13 NC	12
7	170-151	Set Screw; 3/8 - 16 NC x 3/8	2	26	171-145	Pulley; 4 Belt (BA-12 & 14 Only)	1
8	170-060	Bearing; 1 3/8" Pillow Block	2	26	171-147	Pulley; 5 Belt (BA-16 Only)	1
9	170-825	Set Screw; 5/16 - 24 NF x 5/16	2	27	171-110	Bushing; (1, 3/8 Dia. Motor Shaft)	1
10	170-023	Zerk Fitting; Straight	1	28	171-507	Key; 3/8 x 1/2 x 1	1
11	170-627	Key; 5/16 x 5/16 x 1 3/4	1	29	170-005	Bolt; 3/8 - 16 NC x 1 1/4	3
12	132-588	Shaft; Electric Motor Drive	1	27	171-144	Bushing; (1 7/8 Dia. Motor Shaft)	1
13	132-573	Sprocket; #50-2R-B-18T	1	28	171-507	Key; 3/8 x 1/2 x 1	1
14	170-248	Set Screw; 5/16 - 18 NC x 5/16	2	29	170-005	Bolt; 3/8 - 16 NC x 1 1/4	3
15	171-110	Bushing; 1 3/8 (BA-12 & 14 Only)	1	30	101-504	Motor Mount Rail	2
16	171-507	Key; 3/8 x 1/2 x 1	1	31	170-050	Bolt; 1/2 - 13 NC x 2	4
17	170-005	Bolt; 3/8 - 16 NC x 1 1/4	3	32	171-509	Bolt; Tap 1/2 - 13 NC x 4	2
18	171-149	Bushing; 1 3/8 (BA-16 Only)	1	33	101-119	Shield	1
19	171-508	Key; 3/8 x 1/2 x 2	1	34	170-007	Nut; 3/8 - 16 NO	6
20	170-005	Bolt; 3/8 - 16 NC x 1 1/4	3	35	170-244	Flatwasher; 3/8	12
21	171-114	Belt; (BA-12, & 14 Only)	4	36	170-005	Bolt; 3/8 - 16 NO x 1 1/4	6
22	171-114	Belt; (BA-16 Only)	5	37	101-545	Top Guard (BA-120 only)	1
23	171-109	Pulley; 4 Belt (BA-12 & 14 Only)	1	37	101-546	Top Guard (BA-14 only)	1
24	171-148	Pulley; 5 Belt (BA-16 Only)	1	37	101-547	Top Guard (BA-16 only)	1
25	171-105	Key; 5/16 x 5/16 x 5	1	38	132-599	Drive Shield (not shown)	1

NOTE: Motor Mount Rail #101-504 is interchangeable in PAIRS with cast rail #171-113 previously used in this application.

It is the responsibility of the person installing the stationary drive to fabricate and install shields to prevent accidental body or clothing contact with the drive train.



Printed in U.S.A.

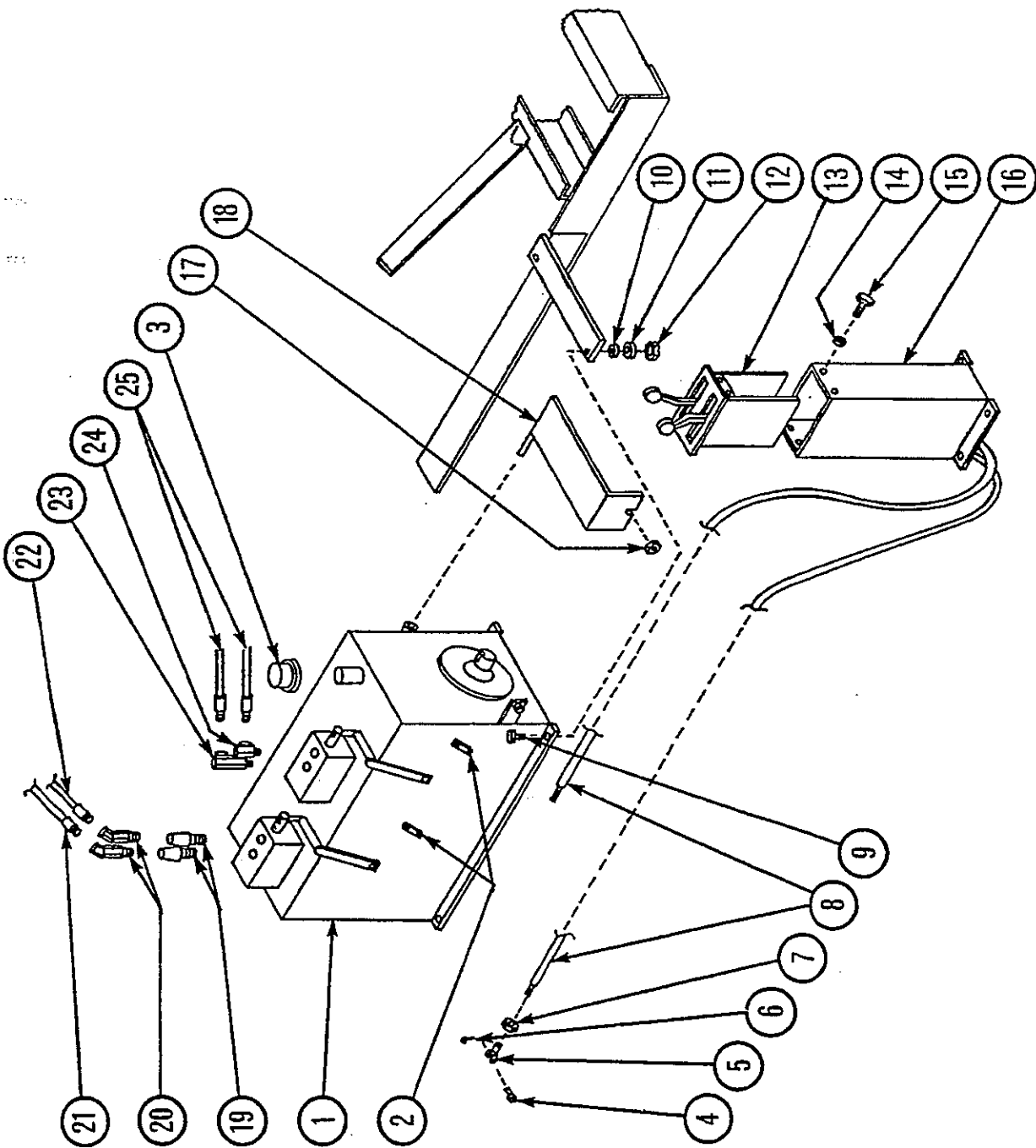
KNIGHT MANUFACTURING CORP.
P.O. BOX 167 1501 WEST 7TH AVE.
BRODHEAD, WISCONSIN 53520
PHONE - GENL. OFFICE (608) 897-2131
PHONE - PARTS DEPT. (608) 897-2125
CABLE: KNIGHT

REVISED: 11-83

ECN 871

PAGE BA STATIONARY 32

SELF-CONTAINED POWER UNIT and CONTROLS



REVISED: ECN 883 12-83



ALWAYS GIVE MODEL AND SERIAL NUMBER OF UNIT.
ORDER BY PART NUMBER, NOT FIGURE REFERENCE NUMBER.

SELF-CONTAINED POWER UNIT and CONTROLS

REF	PART NO	DESCRIPTION	QTY
1	101-424	Hydraulic Tank Assembly	1
2	171-390	Cable Control Bracket	2
3	171-484	Breather Cap	1
4	170-988	Clevis Pin; 1/4 x 1	2
5	171-385	Clevis; 1/4 NF, Forged	2
6	170-364	Cotter Key; 3/32 x 3/4	2
7	171-386	Jam Nut; 1/4 - 28 NF	2
8	171-388	Control Cable; 132" Long	2
9	170-005	Bolt; 3/8 - 16 NC x 1 1/4	4
10	170-244	Flatwasher; 3/8	4
11	170-006	Lockwasher; 3/8	4
12	170-007	Nut; 3/8 - 16 NC	4
13	171-391	Control Head	1
14	170-118	Lockwasher; 5/16	4
15	170-262	Bolt; 5/16 - 18 NC x 3/4	4
16		Pedestal Mount	1
17	170-119	Nut; 5/16 - 18 NC	1
18	101-425	Shield Assembly	1
19	170-235	Reducer Bushing; 1/2 - 3/8	2
20	171-029	Swivel Connector; 3/8 NPT x 45°	2
21	171-310	Hydraulic Hose Assembly; 1/4 x 146" OAL	1
22	171-309	Hydraulic Hose Assembly; 1/4 x 124" OAL	1
23	171-408	Swivel Connector; 1/2 NPT x 90°, Long	1
24	171-407	Swivel Connector; 1/2 NPT x 90°, Short	1
25	171-306	Hydraulic Hose Assembly; 1/2 x 53" OAL	2



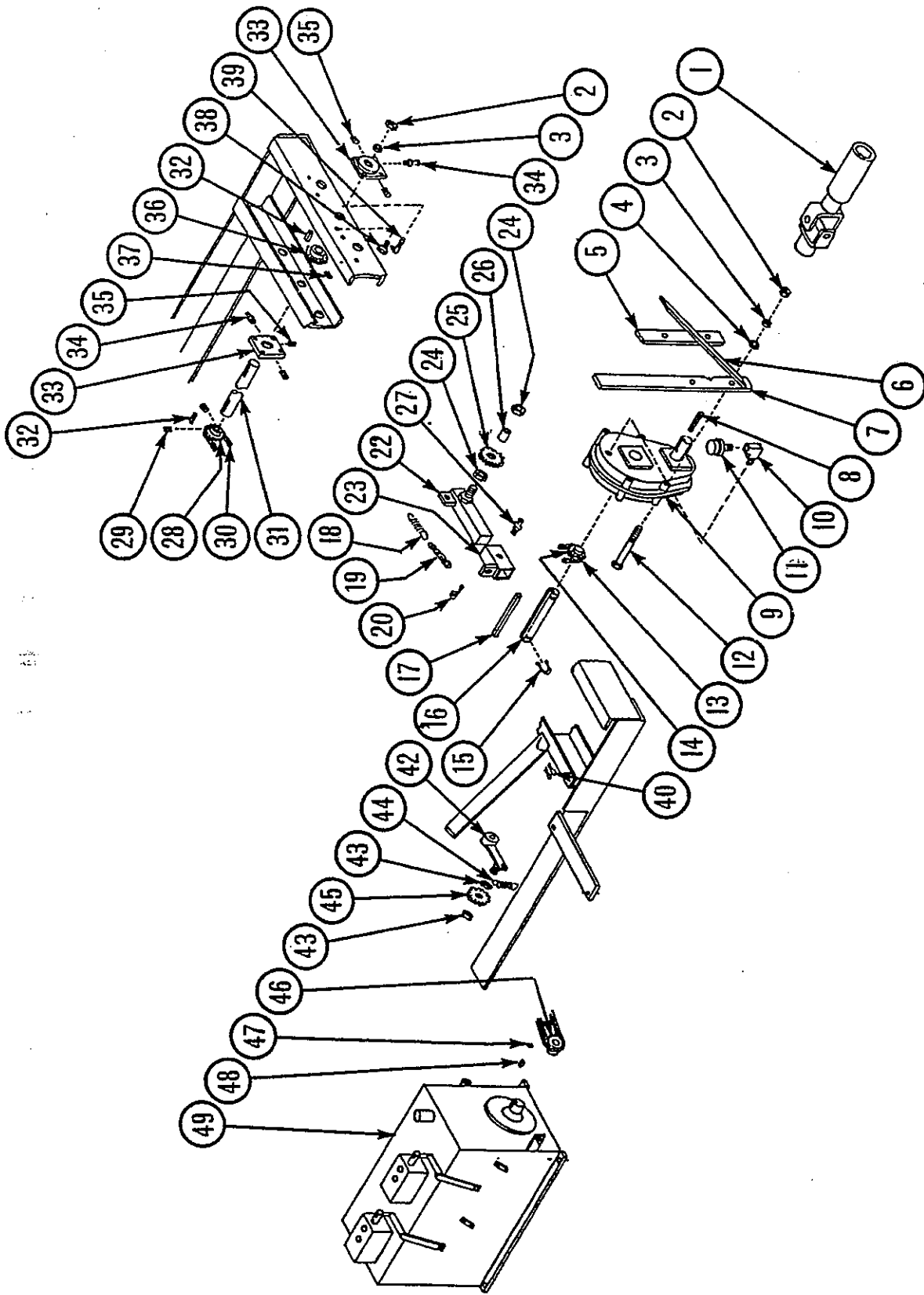
Printed In U.S.A.

KNIGHT MANUFACTURING CORP.
P.O. BOX 167 1501 WEST 7TH AVE.
BRODHEAD, WISCONSIN 53520
PHONE - GENL. OFFICE (608) 897-2131
PHONE - PARTS DEPT. (608) 897-2125
CABLE: KNIGHT

REVISED:ECN 883 12-83

PAGEBA TRK MNT 34

DRIVELINE for SELF-CONTAINED POWER UNIT



REVISED:ECN 894 12-83



ALWAYS GIVE MODEL AND SERIAL NUMBER OF UNIT.
ORDER BY PART NUMBER, NOT FIGURE REFERENCE NUMBER.

DRIVELINE for SELF-CONTAINED POWER UNIT

REF	PART NO	DESCRIPTION	QTY	REF	PART NO	DESCRIPTION	QTY
1	171-318	PTO Driveline; DN Type *	1	28	132-996	Sprocket; 50-B-27T	1
2	170-004	Nut; 1/2 - 13 NC	12	29	170-248	Setscrew; 5/16 - 18 NC x 5/16	2
3	170-003	Lockwasher; 1/2	12	30	171-312	Chain Assembly; #50 x 100 Pitches	1
4	170-040	Flatwasher; 1/2	4	31	170-088	Link; #50 Connector	1
5	133-028	Bar; Gearcase Mount **	1	32	132-598	Shaft; Input Drive	1
6	133-029	Bar; Support Brace **	1	33	170-052	Key; 3/8 Sq. x 2 1/8	2
7	133-027	Bar; Gearcase Mount, Notched **	1	34	170-000	Bearing; Flange 1 3/8	2
8	170-627	Key; 5/16 Sq. x 1 3/4	1	35	170-023	Zerk Fitting; Straight	1
9	171-384	Gearcase Assembly	1	36	170-825	Setscrew; 5/16 - 24.NF x 5/16	2
10	171-567	Elbow	1	37	133-026	Sprocket; 80-B-18T	1
11	171-568	Breather	1	38	170-151	Setscrew; 3/18 - 16 NC x 3/8	2
12	171-412	Bolt; 1/2 - 13 NC x 4	4	39	170-002	Bolt; 1/2 - 13 NC x 1 1/2	4
13	171-413	Chain Assembly; #80 x 60 Pitches	1	40	170-001	J-Bolt; 1/2 - 13 NC	4
14	170-090	Link; #80 Connector	1	41	170-135	Cotter Key; 3/16 x 3	2
15	133-025	Sprocket; 80-B-15T	1	42	101-233	Chain Tightener Assembly	1
16	171-387	Snap Ring; 1 1/2 External	2	43	101-231	Tightener Arm	1
17	132-998	Gearcase Output Shaft	1	44	170-037	Jam Nut; 5/8 - 11 NC	2
18	171-411	Key; 3/8 Sq. x 6 3/16	1	45	170-110	Spring	1
19	171-478	Retainer Chain	1	46	171-272	Sprocket; 50-A-15T, w/Bearing	1
20	170-800	Lynch Pin	1	47	150-826	Sprocket; 50-B-18T	1
21	101-506	Tightener Assembly	1	48	170-248	Setscrew; 5/16 - 18 NC x 5/16	1
22	101-507	Tightener Arm	1	49	170-120	Key; 1/4 Woodruff #807	1
23	100-749	Tightener Slide **	1		101-424	Hydraulic Tank Assembly	1
24	170-037	Jam Nut; 5/8 - 11 NC	2				
25	171-273	Sprocket; 80-A-11T, w/Bearing	1				
26	171-331	Bushing	1				
27	170-148	Zerk Fitting; 45°, 1/4 - 28 NF	1				

* See PTO Page for Breakdown

** These Parts Welded to Mixer Frame



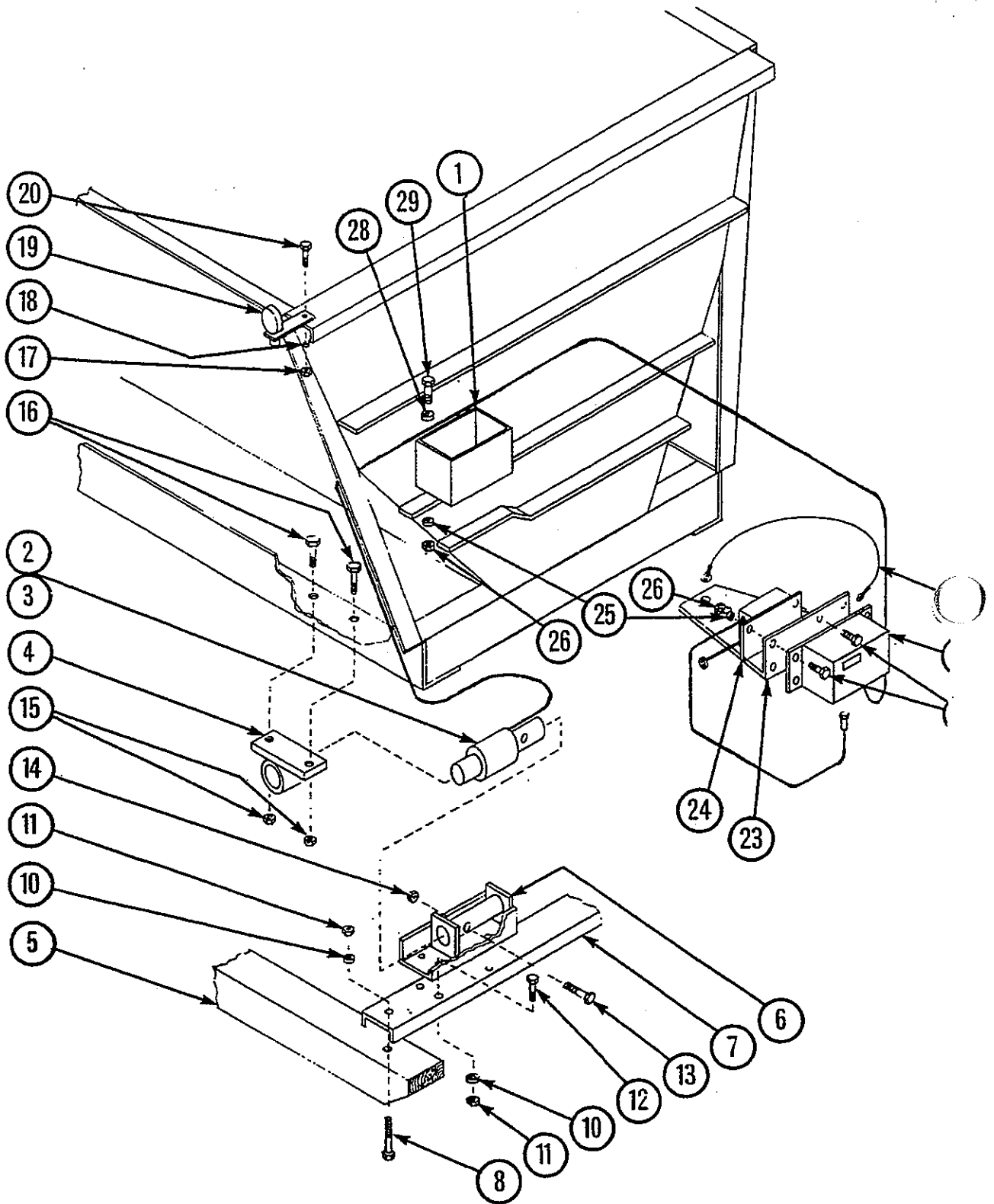
Printed in U.S.A.

KNIGHT MANUFACTURING CORP.
P.O. BOX 167 1501 WEST 7TH AVE.
BRODHEAD, WISCONSIN 53520
PHONE - GENL. OFFICE (608) 897-2131
PHONE - PARTS DEPT. (608) 897-2125
CABLE: KNIGHT

REVISED: ECN-894 12-83

PAGE BA TRK MNT 36

4 Pt. STATIONARY SCALE SYSTEM (Eaton 630)



REVISED: EGN 938 3-84
BA-12 SN-4452
BA-14 SN-4426
BA-16 SN-4352
PAGE BA-37



ALWAYS GIVE MODEL AND SERIAL NUMBER OF UNIT.
ORDER BY PART NUMBER, NOT FIGURE REFERENCE NUMBER.

4 Pt. STATIONARY SCALE SYSTEM (Eaton 630) *

REF	PART NO	DESCRIPTION	QTY
1	171-158	Battery Box	1
2	171-557	Scale Bar (15' cord) (D-57000-1)	2
3	171-558	Scale Bar (25' cord) (D-57000-3)	2
4	100-494	Spool Assembly	4
5	133-380	Skid Rail (BA-12 only)**	2
5	133-381	Skid Rail (BA-14 only)**	2
5	133-382	Skid Rail (BA-16 only)**	2
6	170-418	Weigh Bar Bracket	4
7	131-722	Mounting Channel	2
8	171-098	Carriage Bolt; 1/2 - 13 NC x 6 1/2	4
9	010-141	Box of Completing Parts	1
10	170-003	Lockwasher; 1/2	20
11	170-004	Nut; 1/2 - 13 NC	20
12	170-002	Bolt; 1/2 - 13 NC x 1 1/2	16
13	170-292	Bolt; 3/8 - 16 NC x 3 1/2	4
14	170-047	Locknut; 3/8 - 16 NC	4
15	170-031	Locknut; 5/8 - 11 NC	8
16	170-030	Bolt; 5/8 - 11 NC x 1 3/4	8
17	170-007	Nut; 3/8 - 16 NC	1
18	170-006	Lockwasher; 3/8	1
19	101-390	Horn & Lite Assembly	1
20	170-054	Bolt; 3/8 - 16 NC x 1	1
21	171-552	Indicator Unit; (D-58630-2)	1
22		Instruction Decal (not shown)	1
23	133-378	Indicator Mount	1
24	171-516	Power Supply; (D55661-2)	1
25	170-124	Lockwasher; 1/4	9
26	170-125	Nut; 1/4 - 20 NC	9
27	170-310	Bolt; 1/4 - 20 NC x 1	5
28	170-301	Flatwasher; 1/4	4
29	170-193	Bolt; 1/4 - 20 NC x 3/4 (O.H.)	4
30	101-402	Ground Wire Assembly	1
31	170-411	Wire Clip (not shown)	15

*Refer to scale manual (packed inside indicator unit) for set up and operation procedure.

**These items are not part of the scale package and are shown here for reference only.



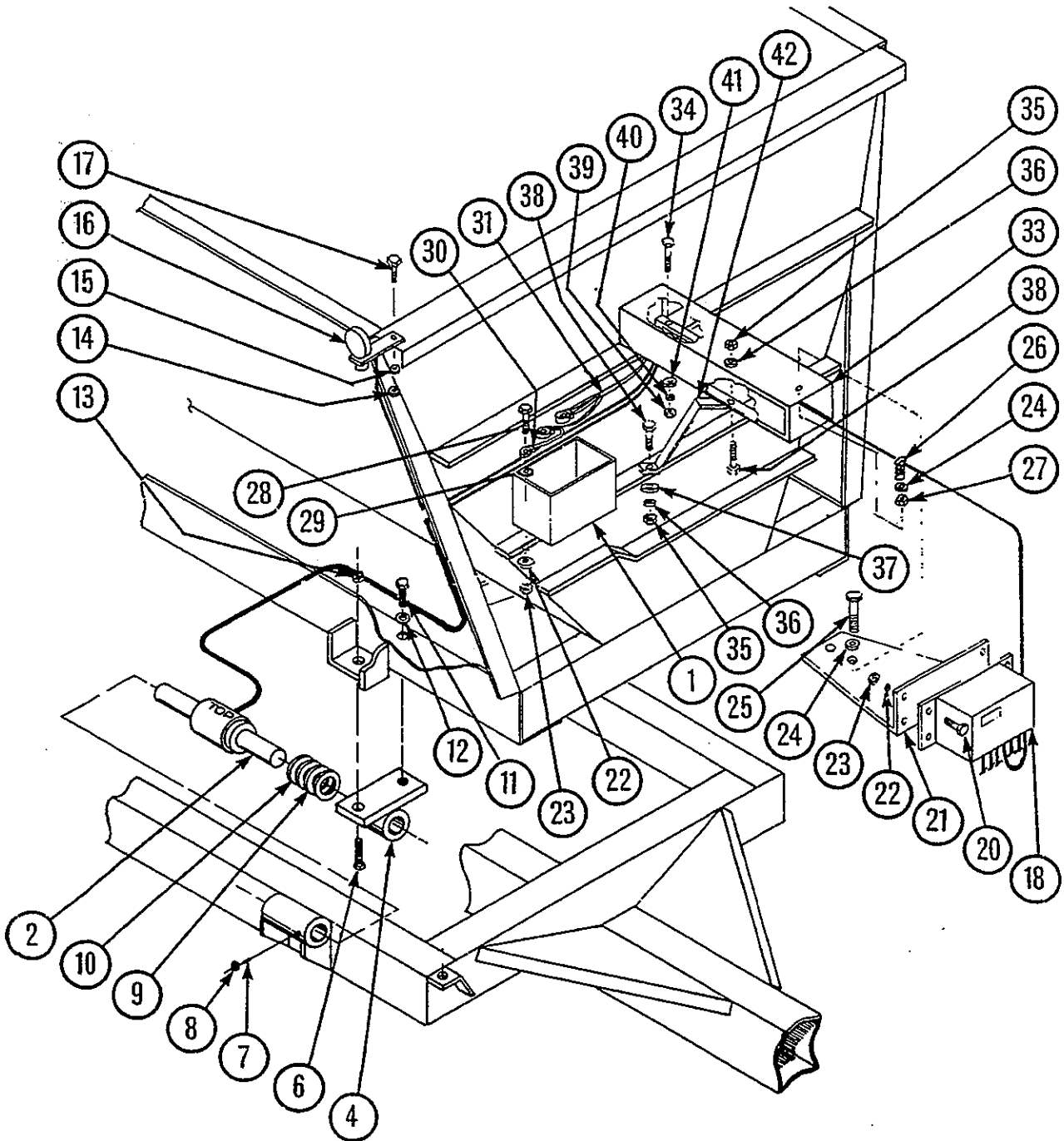
Printed in U.S.A.

KNIGHT MANUFACTURING CORP.
P.O. BOX 167 1501 WEST 7TH AVE.
BRODHEAD, WISCONSIN 53520
PHONE - GENL. OFFICE (608) 897-2131
PHONE - PARTS DEPT. (608) 897-2125
CABLE: KNIGHT

REVISED: ECN 953 5-84
BA-12 SN-4452
BA-14 SN-4426
BA-16 SN-4352

PAGE BA-38

4 Pt. TOW-TYPE SCALE SYSTEM (Eaton 630)



REVISED: ECN 920 2-84

BA-12 SN-4452
BA-14 SN-4426
BA-16 SN-4352



ALWAYS GIVE MODEL AND SERIAL NUMBER OF UNIT.
ORDER BY PART NUMBER, NOT FIGURE REFERENCE NUMBER.

4 Pt. TOW-TYPE SCALE SYSTEM (Eaton 630)*

REF	PART NO	DESCRIPTION	QTY
1	171-158	Battery Box	1
2	171-557	Scale Bar (15' cord) (D-57000-1) (front)	2
3	171-558	Scale Bar (25' cord) (D-57000-3) (rear)	2
4	101-095	Spool Assembly	4
5	010-140	Box of Completing Parts	1
6	170-030	Bolt; 5/8 - 11 NC x 1 3/4	4
7	171-085	Set Screw; 1/2 - 13 NC x 1 1/4	4
8	170-036	Jam Nut; 1/2 - 13 NC	4
9	171-142	Spacer Washer; 14 ga.**	8
10	171-143	Spacer Washer; 10 ga.**	8
11	171-087	Bolt; 5/8 - 11 NC x 1 (Gr. 5)	4
12	170-010	Lockwasher; 5/8	4
13	170-031	Locknut; 5/8 - 11 NC	4
14	170-007	Nut; 3/8 - 16 NC	2
15	170-006	Lockwasher; 3/8	1
16	101-390	Horn & Lite Assembly	1
17	170-054	Bolt; 3/8 - 16 NC x 1	1
18	171-552	Indicator Unit - (D-58630-2)	1
19		Instruction Decal	1
20	170-310	Bolt; 1/4 - 20 NC x 1	4
21	133-378	Indicator Mount	1
22	170-124	Lockwasher; 1/4	8
23	170-125	Nut; 1/4 - 20 NC	8
24	170-244	Flatwasher; 3/8	2
25	170-320	Bolt; 3/8 - 16 NC x 2 1/4	1
26	170-238	Spring	1
27	170-047	Locknut; 3/8 - 16 NC	1
28	170-193	Bolt; 1/4 - 20 NC x 3/4 (O.H.)	4
29	170-301	Flatwasher; 1/4	4
30	101-401	Ground Wire Assembly	1
31	101-502	Power Cord Assembly	1
32	170-411	Wire Clip (not shown)	15
33***	101-337	Indicator Bracket	1
34***	170-005	Bolt; 3/8 - 16 NC x 1 1/4	2
35***	170-119	Nut; 5/16 - 18	4
36***	170-118	Lockwasher; 5/16	4
37***	170-127	Flatwasher; 5/16	2
38***	170-027	Bolt; 5/16 - 18 NC x 1	4
39***	170-007	Nut; 3/8 - 16 NC	2
40***	170-006	Lockwasher; 3/8	2
41***	170-244	Flatwasher; 3/8	2
42***	132-866	Support Brace	2

*Refer to Scale Manual for set up and operation procedure.

**Install as required.

***These items are not part of the scale package and are shown here for reference only.



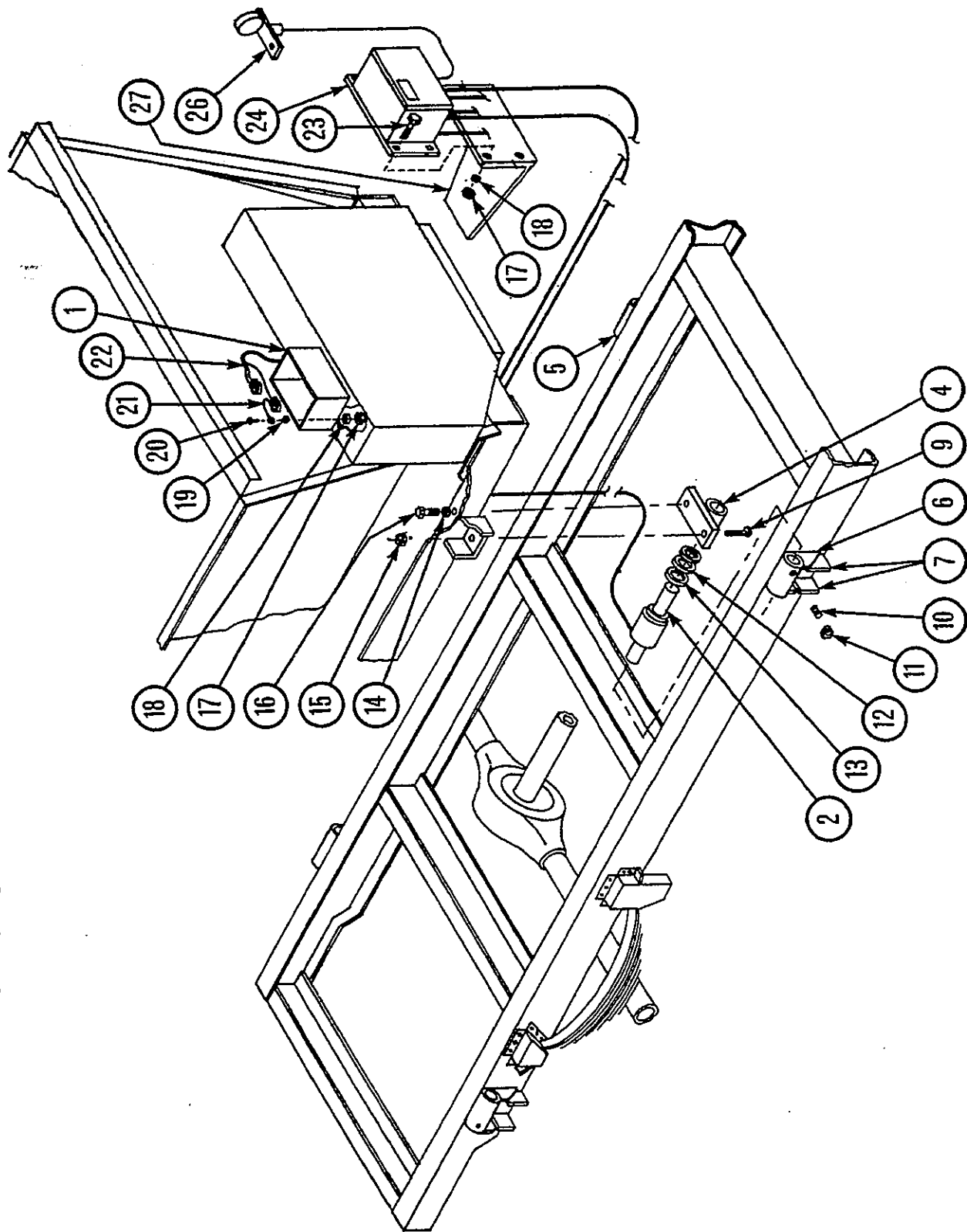
Printed In U.S.A.

KNIGHT MANUFACTURING CORP.
P.O. BOX 167 1501 WEST 7TH AVE.
BRODHEAD, WISCONSIN 53520
PHONE - GENL. OFFICE (608) 897-2131
PHONE - PARTS DEPT. (608) 897-2125
CABLE: KNIGHT

REVISED: ECN-953 5-84
BA-12 SN-4452
BA-14 SN-4426
BA-16 SN-4352

PAGE BA-40

4 Pt. TRUCK-MOUNT SCALE SYSTEM (Eaton 630)



REVISED: ECN 920 2-84
BA-12 SN-4452
BA-14 SN-4426
BA-16 SN-4352



ALWAYS GIVE MODEL AND SERIAL NUMBER OF UNIT.
ORDER BY PART NUMBER, NOT FIGURE REFERENCE NUMBER.

4 Pt. TRUCK-MOUNT SCALE SYSTEM(Eaton 630) *

REF	PART NO	DESCRIPTION	QTY
1	171-158	Battery Box	1
2	171-557	Scale Bar (15' cord) (D-57000-1) (front)	2
3	171-558	Scale Bar (25' cord) (D-57000-3) (rear)	2
4	101-189	Spool Assembly	4
5	101-093	Scale Bar Mount; L.H.	2
6	101-094	Scale Bar Mount; R.H.	2
7	133-070	Gusset	8
8	010-142	Box of Completing Parts	1
9	170-030	Bolt; 5/8 - 11 NC x 1 3/4	4
10	171-085	Setscrew; 1/2 - 13 NC x 1 1/4	4
11	170-036	Jam Nut; 1/2 - 13 NC	4
12	171-142	Spacer Washer; 14 ga.**	8
13	171-143	Spacer Washer; 10 ga.**	8
14	170-010	Lockwasher; 5/8	4
15	170-031	Locknut; 5/8 - 11 NC	4
16	171-087	Bolt; 5/8 - 11 NC x 1 (Gr 5)	4
17	170-125	Nut; 1/4 - 20 NC	8
18	170-124	Lockwasher; 1/4	8
19	170-301	Flatwasher; 1/4	4
20	170-193	Bolt; 1/4 - 20 NC x 3/4 (O.H.)	4
21	101-401	Ground Wire Assembly	1
22	101-503	Power Cord Assembly	1
23	170-310	Bolt; 1/4 - 20 NC x 1	4
24	171-552	Indicator Unit - (D-58630-2)	1
25		Instruction Decal (not shown)	1
26	101-447	Horn & Lite Assembly	1
27	133-378	Indicator Mount	1
28	170-411	Wire Clip (not shown)	1
			15

*Refer to Scale Manual for set up and operation procedure.

**Install as required.



Printed in U.S.A.

KNIGHT MANUFACTURING CORP.
P.O. BOX 167 1501 WEST 7TH AVE.
BRODHEAD, WISCONSIN 53520
PHONE - GENL. OFFICE (608) 897-2131
PHONE - PARTS DEPT. (608) 897-2125
CABLE: KNIGHT

REVISED: ECN 5
BA-12 SN-445
BA-14 SN-445
BA-16 SN-435

PAGE BA-42